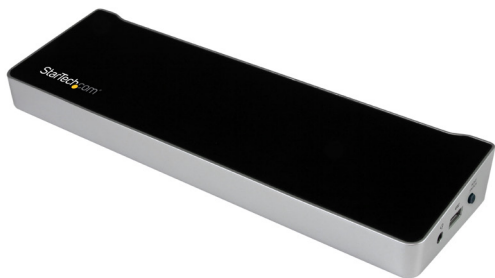


Docking station for two laptops

USB3DDOCKFT



*actual product may vary from photos

DE: Bedienungsanleitung - de.startech.com

FR: Guide de l'utilisateur - fr.startech.com

ES: Guía del usuario - es.startech.com

IT: Guida per l'uso - it.startech.com

NL: Gebruiksaanwijzing - nl.startech.com

PT: Guia do usuário - pt.startech.com

For the latest information, technical specifications, and support for this product, please visit www.startech.com/USB3DDOCKFT

FCC Compliance Statement

This equipment has been tested and found to comply with the limits for a Class B digital device, pursuant to part 15 of the FCC Rules. These limits are designed to provide reasonable protection against harmful interference in a residential installation. This equipment generates, uses and can radiate radio frequency energy and, if not installed and used in accordance with the instructions, may cause harmful interference to radio communications. However, there is no guarantee that interference will not occur in a particular installation. If this equipment does cause harmful interference to radio or television reception, which can be determined by turning the equipment off and on, the user is encouraged to try to correct the interference by one or more of the following measures:

- Reorient or relocate the receiving antenna.
- Increase the separation between the equipment and receiver.
- Connect the equipment into an outlet on a circuit different from that to which the receiver is connected.
- Consult the dealer or an experienced radio/TV technician for help

This device complies with part 15 of the FCC Rules. Operation is subject to the following two conditions: (1) This device may not cause harmful interference, and (2) this device must accept any interference received, including interference that may cause undesired operation.

Changes or modifications not expressly approved by StarTech.com could void the user's authority to operate the equipment.

Industry Canada Statement

This Class B digital apparatus complies with Canadian ICES-003.

Cet appareil numérique de la classe [B] est conforme à la norme NMB-003 du Canada.

CAN ICES-3 (B)/NMB-3(B)

Use of Trademarks, Registered Trademarks, and other Protected Names and Symbols

This manual may make reference to trademarks, registered trademarks, and other protected names and/or symbols of third-party companies not related in any way to StarTech.com. Where they occur these references are for illustrative purposes only and do not represent an endorsement of a product or service by StarTech.com, or an endorsement of the product(s) to which this manual applies by the third-party company in question. Regardless of any direct acknowledgement elsewhere in the body of this document, StarTech.com hereby acknowledges that all trademarks, registered trademarks, service marks, and other protected names and/or symbols contained in this manual and related documents are the property of their respective holders.

Table of Contents

Introduction	1
Packaging Contents	1
System Requirements.....	1
Product diagram	3
Front view	3
Rear view	3
About USB 3.0 and USB 3.1	4
About installation	4
Install the driver.....	4
Install the hardware.....	4
Switch which host to control	5
About the docking station ports	5
Charge a device	5
Charge an iPad with a 30-pin dock connector	5
Configure a display device	6
Use DisplayLink to configure a display device	6
About the display options	6
Use Mac OS to configure a display device	7
Use Mac OS to change the display mode.....	7
Use Mac OS to change the primary display.....	7
Supported video resolutions	8
Transfer files and settings between the connected host laptops ..	8
Use PCLinq software to transfer files	8
Use Windows Easy Transfer to migrate settings and transfer files.....	9
Technical support	10
Warranty information	10

Introduction

Packaging Contents

- 1x laptop docking station
- 2x USB 3.0 host cables
- 1x universal power adapter (NA/EU/UK/AU)
- 1x instruction manual

System Requirements

The docking station requires the following:

- One or two USB-enabled host computer system(s) with an available USB 3.0 port on each host
- Available AC electrical outlet(s)
- DisplayPort™ and HDMI® enabled display(s) with cables as desired (for additional external displays)
- Windows® 7 (32-bit and 64-bit)
- Windows 8 (32-bit and 64-bit)
- Windows 8.1 (32-bit and 64-bit)
- Mac OS® 10.8 and later (tested up to 10.10)

Note: If you connect the docking station to a USB 2.0 host port or if you use a USB 2.0 host connection cable, performance may be limited.

PCLInq supports the following operating systems:

- Windows 7 (32-bit and 64-bit)
- Windows 8 (32-bit and 64-bit)
- Windows 8.1 (32-bit and 64-bit)
- Windows XP SP2 or SP3 (32-bit and 64-bit)
- Windows Vista
- Mac OS 10.8 and later

Windows Easy Transfer supports the following operating systems:

- Windows 7 (32-bit and 64-bit)
- Windows 8 (32-bit and 64-bit)

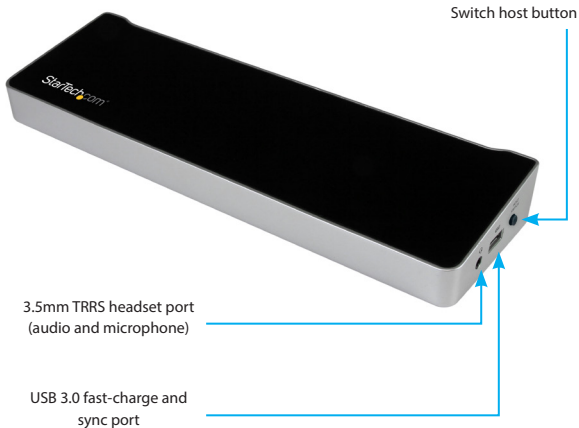
- Windows XP SP2 or SP3 (32-bit and 64-bit)
- Windows Vista

Note: In Windows 8.1, Microsoft® removed support for cables from the Windows Easy Transfer software.

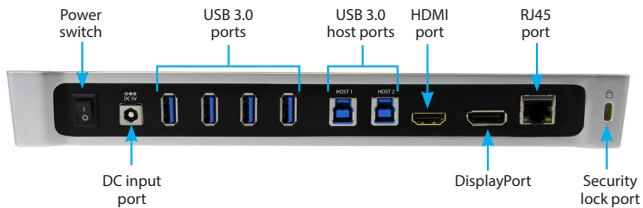
Operating system requirements are subject to change. For the latest requirements, please visit www.startech.com/USB3DDOCKFT

Product diagram

Front view



Rear view



About USB 3.0 and USB 3.1 Gen 1

USB 3.0 is also known as USB 3.1 Gen 1. This connectivity standard offers speeds up to 5 Gbps.

About installation

Depending on the version of operating system that you're currently running and whether your network connection is active, the docking station might install automatically or download the proper drivers when the dock is connected to an available USB port on the host system.

If you receive a prompt to automatically install the driver, complete the on-screen instructions to complete the installation.

Install the driver

1. On the first host laptop, use a web browser to navigate to <http://www.startech.com/USB3DDOCKFT>.
2. Click the **Support** tab.
3. Click the driver file and complete the on-screen instructions to download the file.
4. Browse to the location of the driver file that you downloaded and do one of the following:
 - If the operating system that you're using is a version of Windows, run the **DisplayLink "exe"** install file.
 - If the operating system that you're using is a version of Mac OS, run the **DisplayLink "dmg"** install file.
5. Follow any on-screen instructions to complete the driver installation process.
6. Repeat the driver installation steps above on the second host laptop.

Note: You may be asked to restart your host laptop(s) to complete the installation.

Install the hardware

1. Select the appropriate regional clip for your region and connect the power adapter to an AC electrical outlet.
2. Connect the power adapter to the DC input on the docking station.
3. Attach one of the provided USB 3.0 cables to the "HOST 1" USB 3.0 host port on the docking station and then to an available USB 3.0 port on the first host laptop.
4. Attach the second provided USB 3.0 cable to the "HOST 2" USB 3.0 host port on the docking station and then to an available USB 3.0 port on the second host laptop.
5. Connect your DisplayPort and/or HDMI displays to the corresponding ports on the docking station.

6. As necessary, connect any other devices to the docking station, including an RJ45 network connection, USB peripherals, a headset, speakers, or microphones.

Switch which host to control

1. Ensure that both host laptops are connected to the docking station's two USB 3.0 host ports.
2. Press the "HOST SWITCH" button on the side of the docking station to cycle between which host laptop to control.

The docking station's ports, functionality, and connected devices are controlled by the host laptop that the dock is set to.

Note: Display placement is maintained when switching between host laptops.

For example, if "HOST 1" places the displays vertically, and "HOST 2" places the displays horizontally, display placement will be maintained when switched.

About the docking station ports

The four USB ports located at the back of the docking station are standard USB 3.0 throughput ports. When the docking station is connected to a host laptop, these ports provide a trickle charge to a selection of devices.

The side USB 3.0 port is compliant with Battery Charging Specification Revision 1.2 (BC 1.2), which means that you can use the port to connect and charge a device faster than a traditional standard USB 3.0 port.

This side USB 3.0 port can fast-charge a connected device, even when the docking station isn't connected to a host laptop. When the docking station is connected to a host laptop, the side USB 3.0 port functions as a Charging Downstream Port (CDP), which has simultaneous charge and sync capabilities.

Charge a device

If you're only using the side USB 3.0 port to charge a device, a connection to a host laptop isn't required.

- To charge a device, connect a device to the USB 3.0 port located on the side of the docking station.

Note: The side USB 3.0 port can only fast-charge connected devices that comply to USB Battery Charging Specification Revision 1.2.

Charge an iPad with a 30-pin dock connector

The following steps only apply to an iPad with a 30-pin connector. An iPad that uses a Lightning connector can be charged using the USB port located on the side of the docking station.

1. Make sure that the host laptops are not connected to the docking station.

2. Connect the iPad to the USB 3.0 port located on the side of the docking station.

Note: If you connect a host laptop (whether it be one or two host laptops) to the docking station while you're charging a first-generation iPad, the iPad will switch to data sync mode and stop charging. To switch back to charging mode, disconnect the host laptop and the iPad from the docking station. Then connect the iPad to the docking station again.

Configure a display device

Use DisplayLink to configure a display device

1. Connect a display device (monitor, projector, and so on) to the docking station.
2. If necessary, to display all of the available icons, click the **Show hidden icons** arrow on the toolbar.
3. Click the **DisplayLink** icon.
4. Click StarTech **USB3DDOCKFT**.
5. In the drop-down list, click a configurable option.

Each display is configured independently from all of the connected displays.

Note: If you're using a computer that's running Windows 7 or Windows 8, you can also adjust a display device on the **Display Settings** screen.

About the display options

The following information describes the display configurations available using the DisplayLink utility.

Extend

Select this option to display an extension of your active Windows desktop on the display that's connected to the docking station. When you select this option, you can view more applications or documents at the same time. The display is extended in the direction it was the last time that the display was in Extend mode.

For more control, click **Extend To** and select one of the options. This puts the display into Extend mode, and places the display to the right or left, above, or below the primary display.

Mirror

Select this option to display a duplication of the primary display on the display that's connected to the docking station. The resolution, color depth, and refresh rate of the primary display are replicated on the connected display.

Note: When the connected monitor uses a different specification than the primary display, the system's primary graphics adapter scales all of the settings to a lower specification to maintain a uniform aspect ratio.

Extend To

Select this option to specify the physical location of the display that's connected to the docking station in relation to the system's primary monitor.

Screen Resolution

Select this option to change the resolution on the display that's connected to the docking station.

Screen Rotation

Select this option to change the orientation in which the screen is viewed. The two most common orientation types are portrait and landscape.

Set as Main Monitor

Select this option to specify the display that's connected to the docking station as the primary display. The primary display shows all of the system notifications, and takes priority with applications.

Off

Select this option to disable the display that's connected to the docking station.

Use Mac OS to configure a display device

If you're using a computer that's running a version of Mac OS, you can adjust a display device in the **Displays** section of the **Mac System Preferences** menu.

Use Mac OS to change the display mode

By default, the docking station will be set up as an extended display.

- Do one of the following:
 - To change the display to **Mirror** mode, on the **Arrangement** screen on a display, select the **Mirror Display** check box.
 - To change the display to **Extend** mode, on the **Arrangement** screen on a display, clear the **Mirror Display** check box.
 - To use **Extended** and **Mirror** modes simultaneously, clear the **Mirror Display** check box. On the **Arrangement** screen, press and hold **Cmd + Alt**, and then drag and drop the display that you want to mirror over the primary display (indicated with a white bar). Repeat this step for all of the displays that you want to mirror.

Use Mac OS to change the primary display

Changing the primary display affects where new windows appear.

- To change which of the connected displays is the primary display, on the current primary display, click the white menu bar and drag it to the display that you wish to make the primary one.

Supported video resolutions

The docking station supports approximately 4K video resolutions total, across both the DisplayPort and HDMI ports.

4K (3840x2160) resolutions can be achieved when a single DisplayPort display is connected to the docking station. The connected display must offer 4K support in order to achieve 4K resolutions.

See the video resolution chart below for specific configurations and supported resolutions:

Video Output	Max DisplayPort Resolution	Max HDMI Resolution
DisplayPort Only (Single Display)	3840x2160p (4K)	N/A
	2560x1600p	
	2560x1440p	
HDMI Only (Single Display)	N/A	2560x1440p
DisplayPort and HDMI (Two Displays)	2048x1152p	2048x1152p

Note: Depending on the configuration and the supported resolutions of your connected monitors, the docking station may support video resolutions lower than those specified above.

Transfer files and settings between the connected host laptops

The docking station supports both **PCLinq** and **Windows Easy Transfer**.

Use the docking station with the included PCLinq software to transfer files from one computer to another computer, and control the file directories on both computers at the same time.

You may also use Windows Easy Transfer to transfer files, user accounts, and program settings from one Windows host laptop, to another Windows host laptop.

Use PCLinq software to transfer files

In order to use PCLinq you need to have Windows Easy Transfer drivers installed on the host laptops that are running Windows. Windows Easy Transfer drivers come installed on Windows 7, Windows 8, and Windows 8.1.

PCLinq software will appear as a removable drive once a host laptop is connected to the docking station. To use the file transfer functionality, the software must be installed on each connected host laptop.

1. Ensure two laptops are connected to the “HOST” ports on the docking station. Once connected, browse to the location of the “PCLINQ” removable drive on the first host laptop.
 - If the operating system that you’re using is a version of Windows, run the **PCLinq “exe”** install file.
 - If the operating system that you’re using is a version of Mac OS, run the **PCLinq “dmg”** install file.
2. Follow any on-screen instructions to complete the PCLinq installation process.
3. Repeat the installation steps above for the second host laptop.
4. Click and open the PCLinq software on each host laptop using the installed PCLinq shortcut.
5. Select a “Local” (HOST1) and “Remote” (HOST2) laptop.
6. Click the **Connect** button
7. Use the toolbar options and browser windows to transfer files from one laptop to the other.

Use Windows Easy Transfer to migrate settings and transfer files

If you’re using two Windows 7 or 8 based host laptops you can use the Windows Easy Transfer utility to migrate settings and profiles.

1. Run the **Windows Easy Transfer** utility and follow any on-screen instructions to complete a profile migration or file transfer.

Note: You cannot transfer settings and profiles with this docking station when running Windows 8.1.

Microsoft® removed support for “transfer cables” from the Windows Easy Transfer software, therefore , only PCLinq can be used to transfer files to or from a laptop running Windows 8.1.

Technical support

StarTech.com's lifetime technical support is an integral part of our commitment to provide industry-leading solutions. If you ever need help with your product, visit www.startech.com/support and access our comprehensive selection of online tools, documentation, and downloads.

For the latest drivers/software, please visit www.startech.com/downloads

Warranty information

This product is backed by a two year warranty.

In addition, StarTech.com warrants its products against defects in materials and workmanship for the periods noted, following the initial date of purchase. During this period, the products may be returned for repair, or replacement with equivalent products at our discretion. The warranty covers parts and labor costs only. StarTech.com does not warrant its products from defects or damages arising from misuse, abuse, alteration, or normal wear and tear.

Limitation of liability

In no event shall the liability of StarTech.com Ltd. and StarTech.com USA LLP (or their officers, directors, employees or agents) for any damages (whether direct or indirect, special, punitive, incidental, consequential, or otherwise), loss of profits, loss of business, or any pecuniary loss, arising out of or related to the use of the product exceed the actual price paid for the product. Some states do not allow the exclusion or limitation of incidental or consequential damages. If such laws apply, the limitations or exclusions contained in this statement may not apply to you.

Hard-to-find made easy. At StarTech.com, that isn't a slogan. It's a promise.

StarTech.com is your one-stop source for every connectivity part you need. From the latest technology to legacy products — and all the parts that bridge the old and new — we can help you find the parts that connect your solutions.

We make it easy to locate the parts, and we quickly deliver them wherever they need to go. Just talk to one of our tech advisors or visit our website. You'll be connected to the products you need in no time.

Visit www.startech.com for complete information on all StarTech.com products and to access exclusive resources and time-saving tools.

StarTech.com is an ISO 9001 Registered manufacturer of connectivity and technology parts. StarTech.com was founded in 1985 and has operations in the United States, Canada, the United Kingdom and Taiwan servicing a worldwide market.