

SVID2USB2NS

Instruction Manual

USB 2.0 Video Capture Cable

**USB 2.0 to Composite / S-Video
Video Capture Cable**

StarTech.com 
Making hard-to-find easy![®]

FCC Compliance Statement

This equipment has been tested and found to comply with the limits for a Class B digital device, pursuant to part 15 of the FCC Rules. These limits are designed to provide reasonable protection against harmful interference in a residential installation. This equipment generates, uses and can radiate radio frequency energy and, if not installed and used in accordance with the instructions, may cause harmful interference to radio communications. However, there is no guarantee that interference will not occur in a particular installation. If this equipment does cause harmful interference to radio or television reception, which can be determined by turning the equipment off and on, the user is encouraged to try to correct the interference by one or more of the following measures:

- Reorient or relocate the receiving antenna.
- Increase the separation between the equipment and receiver.
- Connect the equipment into an outlet on a circuit different from that to which the receiver is connected.
- Consult the dealer or an experienced radio/TV technician for help.

Use of Trademarks, Registered Trademarks, and other Protected Names and Symbols

This manual may make reference to trademarks, registered trademarks, and other protected names and/or symbols of third-party companies not related in any way to StarTech.com. Where they occur these references are for illustrative purposes only and do not represent an endorsement of a product or service by StarTech.com, or an endorsement of the product(s) to which this manual applies by the third-party company in question. Regardless of any direct acknowledgement elsewhere in the body of this document, StarTech.com hereby acknowledges that all trademarks, registered trademarks, service marks, and other protected names and/or symbols contained in this manual and related documents are the property of their respective holders.

Table of Contents

Introduction	1
Packaging Contents.....	1
System Requirements	1
Installation.....	1
Driver Installation.....	2
Application Installation.....	3
Hardware Installation.....	4
Operation	5
Option.....	6
General.....	6
Encoder Property	6
Troubleshooting	8
Specifications.....	11
Technical Support.....	12
Warranty Information	12

Introduction

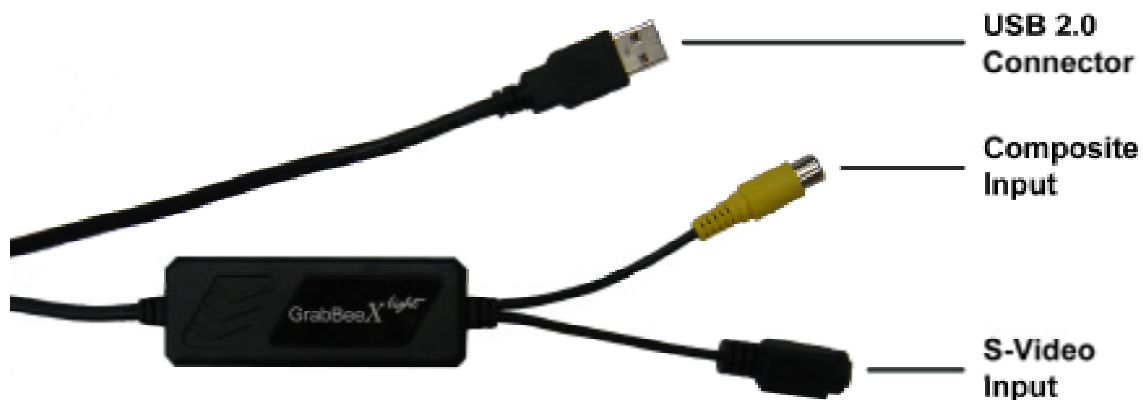
Packaging Contents

- 1 x SVID2USB2NS video capture cable
- 1 x User Manual
- 1 x Driver CD

System Requirements

- USB 2.0 equipped computer
- Pentium 4 - 1GHz or above or equivalent AMD processor
- 128MB of RAM
- Microsoft Windows® 2000 SP4, XP SP2 or above, or Vista

Installation



USB 2.0 connector: Connect to USB 2.0 port of your computer

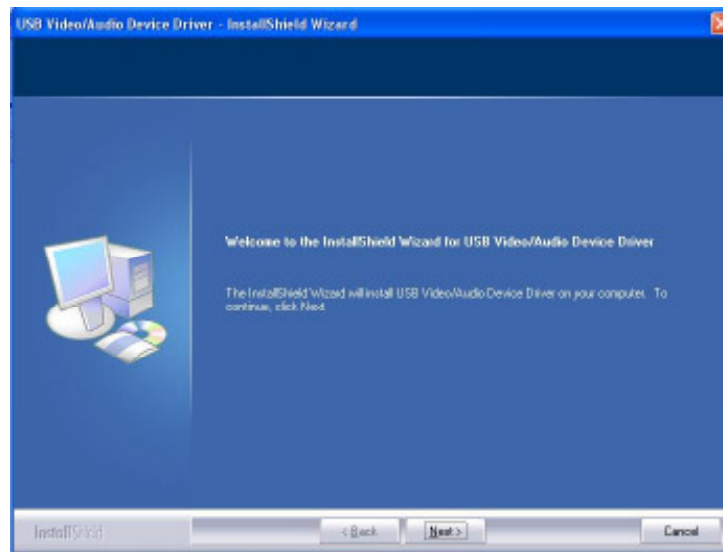
S-Video input: S-Video input from external A/V device (e.g. VCR)

Composite video input: Composite video input from external A/V Device (e.g. VCR)

* **If you want capture audio, please connect audio directly to Line-in of your Sound card.**

Driver Installation

- * **Do not connect SVID2USB2NS adapter to computer USB port before driver installation!**
 - * **Please make sure your computer has USB2.0 port correctly installed and functioning !! (Please update your Windows® XP to at least SP2, or Windows® 2000 to SP4, and updating the USB 2.0 host controller drivers before installation to make sure the computer's USB 2.0 is functioning correctly)**
1. Please insert “Multimedia Installation Kit” CD-ROM into your CD-ROM drive; AutoRun will play; (if AutoRun does not run, please go to “My Computer” and double click the CD-ROM drive).
 2. From the menu, please select the “GrabBeeX-light” product.
 3. Please select “Device Driver” on the next screen.
- * **Note: In Vista, windows will get a pop up dialogue box. Choose “Allow” to continue the installation.**



4. Click “Next”.
5. Complete Setup Wizard.
6. Click “Finish”, then please restart the computer.

Application Installation

1. Please insert “Multimedia Installation Kit” CD-ROM into your CD-ROM drive; AutoRun will play; (if AutoRun does not run, please go to “My Computer” and double click the CD-ROM drive).
2. From the menu, please select the “GrabBeeX-light” product.
3. Please select “Application Software” on the next screen.
4. Please select “GrabBee”.
5. Welcome to the InstallShield wizard; Click “Next”.
6. Select the language you will use for GrabBee; then click “Set”.
7. Choose the destination location; Click “Next”.
- **Note: Under Windows Vista, steps 8 to 17 will automatically be skipped. Please do not worry as this is normal.**
8. Install Windows Media Format 9 Series Runtime Setup;
9. Click “Yes”.
10. License agreement; Click “Yes”.
11. Finished Windows Media Format 9 Series Runtime installation;
12. Click “OK”
13. License for Windows Media Tools Setup; Click “Yes”.
14. Windows Media Tools Setup; Click “Next”.
15. Create folder; Click “Yes”.
16. Installation Options; Click “Next”.
17. Installation Directory; Click “Finish”.
18. Setup Complete; Click “OK”.
19. InstallShield Wizard Complete; Click “Finish” then please restart the computer.

After the AP software is installed, three icons will now be shown on screen:



GrabBee : GrabBee software main program

Record Files : Click to see your record files

Snapshot : Click to see your capture still image files

Hardware Installation

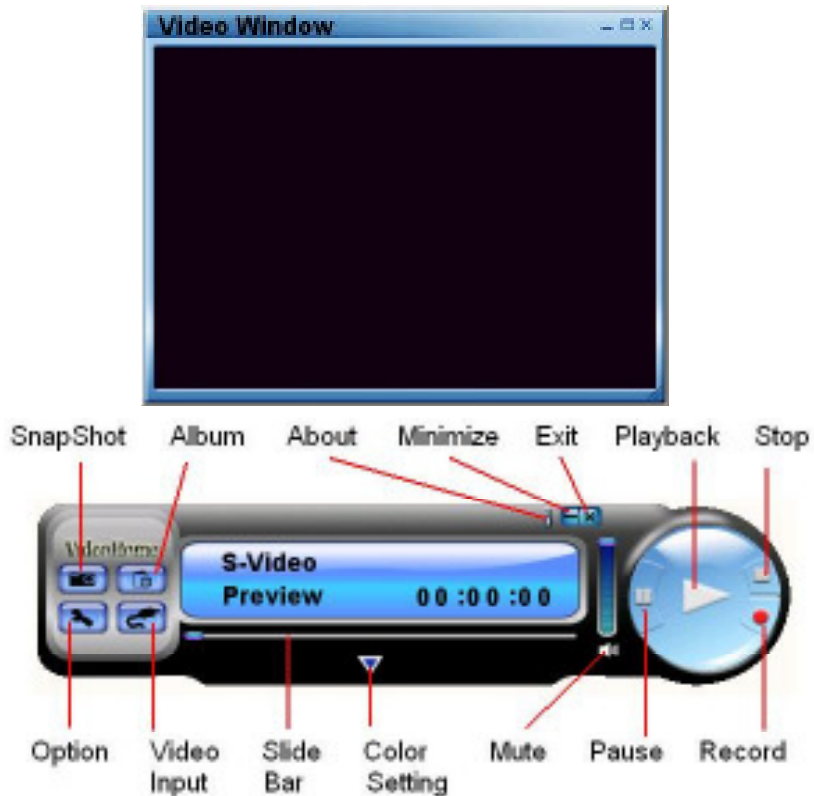
After the computer restarts, please plug the SVID2USB2NS device into the computer's USB 2.0 port; System will now detect the new device and install it automatically.

Please check whether the SVID2USB2NS driver was installed successfully in your computer.



Operation

Starting : Please click the “GrabBee” icon. After starting the application, you can see video window as below.



Video Window : Please move mouse cursor into Video window and right click, function menu will appear as below.



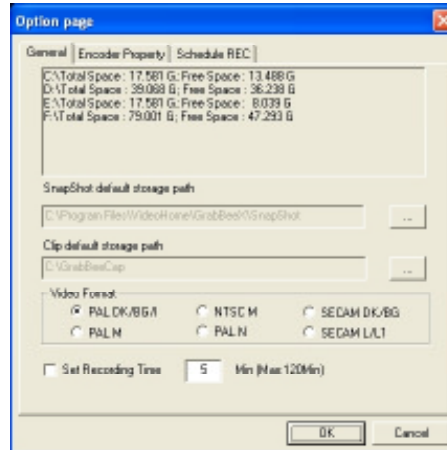
Resolution : There are 4 resolution video preview you can select,

NTSC mode : 352x240, 640x480, 720x480, Full screen

PAL mode : 352x288, 640x480, 720x576, Full screen

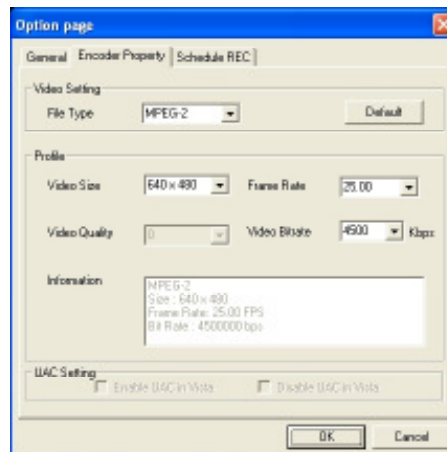
Option

General



- a. Lists your hard disk space information.
- b. Snapshot default storage path : The location to saved captured image files.
- c. Clip default storage path : Location to saved recorded video files.
- d. Video Format : Choose your correct video format input.
- e. Set Recording Time : Sets Recording Time length.

Encoder Property



- a. Video Setting : Recording file type format AVI, MPEG-1, MPEG-2, VCD, SVCD, DVD, WMV, *MP4 selection (if you want DVD burning, please choose DVD mode)

b. Profile : Video Size, Frame Rate, Video Quality, Video Bitrate setting; Information column will display your setting

* **Note:** File format 'MP4' will not appear as a selectable option under Windows Vista.

Schedule Record : Set One-time schedule here. Input your Start and Stop time, Date, Video Source, and File Name. Click 'Add' after input then 'OK.'

Video Input : Switch between Composite or S-Video input.

Slide Bar : Move to any video position during playback.

Color Setting : Brightness/Contrast/Hue/Saturation adjustment.

Mute : Volume On/Off

Pause : Pauses the playback file

Record : Click this button to start recording a video. After you click "Stop" button, a table will be shown, which asks you to rename or save the file; default file name format is "Mddhhmmss".

M : Month (Jan->1, Feb->2....Oct->O, Nov->N, Dec->D)

dd : Date, hh : Hour, mm : Minute, ss : Second

Stop : Stop Recording and Playback;

Playback : Play the recorded file

SnapShot : Image capture resolution is the same as Preview mode's Resolution; click SnapShot and a table shows as below.



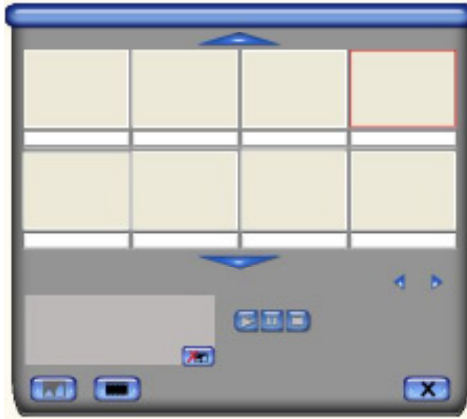
You can "Save", "Save All", "Delete", "Delete All" image files, file name's format is "Mddhhmmssn".

M : Month (Jan->1, Feb->2....Oct->O, Nov->N, Dec->D)

dd : Date; hh : Hour; mm : Minute; ss : Second

n : Number

Album: The Album will show all capture files including image and video. Please click “Clips” or “Images” to find all listed; you can find each file’s information, or preview the recording video in this window.



Full Screen mode : Double click inside your video window to switch back and forth between full screen and previous screen size.

Troubleshooting

Q1 : Why can't my system detect the SVID2USB2NS?

A1 : (a) Check that you've enabled USB 2.0 in the motherboard BIOS setup.

(b) Please make sure that your system has the latest USB 2.0 host driver.

For Windows® XP, please upgrade to Service Pack 2 or above.

For Windows® 2000, please upgrade to Service Pack 3 or above.

Q2 : Why can't I see video display?

A2 : (a) Perhaps the video system setup is incorrect; please check your hardware connection and choose the correct Video Format from the Options menu

(b) Please make sure that your system has the latest USB 2.0 host driver.

For Win XP, please upgrade to Service Pack 2 or above.

For Win 2000, please upgrade to Service Pack 3 or above.

Q3 : Why is the resolution always in 320x240 under preview mode?

A3 : It's because you plugged the SVID2USB2NS in a USB 1.1 port, or perhaps even though your USB port is 2.0, it may not have upgraded to USB 2.0 drivers. Please make sure your USB port is USB 2.0, and have already upgraded the USB 2.0 host driver available from Microsoft's Website.

Q4 : Why does the system show "High Speed device plug into Full speed USB port..."

A4 : (a) Please make sure your system supports USB 2.0 hardware.
(b) Please make sure that you've installed USB 2.0 Host drivers.

Q5 : Why do I get unstable video during preview and recording?

A5 : If you are using Ultra DMA hard disk, please updated the latest driver of IDE ATA/ATAPI controller. Certain motherboards' bundled driver are not of the latest version, we suggest that you use Windows' own system bundled driver.

Q6 : Why can't I hear anything under preview mode?

A6: The audio needs to go through sound card's Line-in, please check your sound card setting.

Q7 : How can I get a minimum number of dropped frames during video capture?

A7 : The best recording performance depends on your computer system performance, but you can also take some steps described below to improve your performance.

- a. Try lowering the resolution format you record in.
- b. Enable hard disk drive DMA ; Go to My Computer->Control Panel ->System->Hardware->Device Manager->Disk drives to setup.
- c. Try and make more available free space on the hard disk drive.

- d. Use a hard disk drive with speed of more than 7200 rotation per minute
- e. Disable Power Management in BIOS.
- f. Disable Power Saving mode of monitor.
- g. Close unnecessary/unused programs in your system.
- h. Defrag your hard disk.
- i. Try not to run any other program(s) during recording.

Q8 : I can preview video but when recording, the system crashed/hanged.

A8 : (a) Please make sure you've install DirectX 9.0 or above.

(b) Your VGA card driver may be incompatible with DirectDraw, please update your VGA driver.

(c) Too many programs might have occupied available memory. Close unnecessary/unused programs.

(d) Please lower your hardware acceleration; you can go to My Computer->Control Panel->Display->Settings->Advanced to adjust it.

Q9 : When I start the GrabBee software, program automatically closed.

A9 : Please check to see that your sound card driver was installed successfully.

Specifications

Video Input	1x RCA composite, 1x S-Video
Audio Input	None
Video System	NTSC, PAL, SECAM
Video Format	MPEG (720x480@NTSC, 720x576@PAL), MPEG4 (320x240), AVI (352x288, 352x240, 320x240)
Still Image Format	JPG, BMP, TIFF
Performance	25 FPS @ 720x576 (PAL), 30 FPS @ 720x480 (NTSC)
Power	5VDC, 350mA (max) through USB
Operating System Support	Windows® 2000/XP/Vista

Technical Support

StarTech.com's lifetime technical support is an integral part of our commitment to provide industry-leading solutions. If you ever need help with your product, visit www.startech.com/support and access our comprehensive selection of online tools, documentation, and downloads.

Warranty Information

This product is backed by a one year warranty.

In addition, StarTech.com warrants its products against defects in materials and workmanship for the periods noted, following the initial date of purchase. During this period, the products may be returned for repair, or replacement with equivalent products at our discretion. The warranty covers parts and labor costs only. StarTech.com does not warrant its products from defects or damages arising from misuse, abuse, alteration, or normal wear and tear.

Limitation of Liability

In no event shall the liability of StarTech.com Ltd. and StarTech.com USA LLP (or their officers, directors, employees or agents) for any damages (whether direct or indirect, special, punitive, incidental, consequential, or otherwise), loss of profits, loss of business, or any pecuniary loss, arising out of or related to the use of the product exceed the actual price paid for the product. Some states do not allow the exclusion or limitation of incidental or consequential damages. If such laws apply, the limitations or exclusions contained in this statement may not apply to you.



StarTech.com has been making “hard-to-find easy” since 1985, providing high quality solutions to a diverse IT and A/V customer base that spans many channels, including government, education and industrial facilities to name just a few. We offer an unmatched selection of computer parts, cables, A/V products, KVM and Server Management solutions, serving a worldwide market through our locations in the United States, Canada, the United Kingdom and Taiwan.

Visit **www.startech.com** today for complete information about all our products and to access exclusive interactive tools such as the Cable Finder, Parts Finder and the KVM Reference Guide.