

2-Port USB 3.1 Card - 10Gbps per port - 2x USB-C - PCIe

PEXUSB312C2

DE: Bedienungsanleitung - de.startech.com

FR: Guide de l'utilisateur - fr.startech.com

ES: Guía del usuario - es.startech.com

IT: Guida per l'uso - it.startech.com

NL: Gebruiksaanwijzing - nl.startech.com

PT: Guia do usuário - pt.startech.com

Package contents

- 1 x USB 3.1 card
- 1 x low-profile bracket
- 1 x quick-start guide

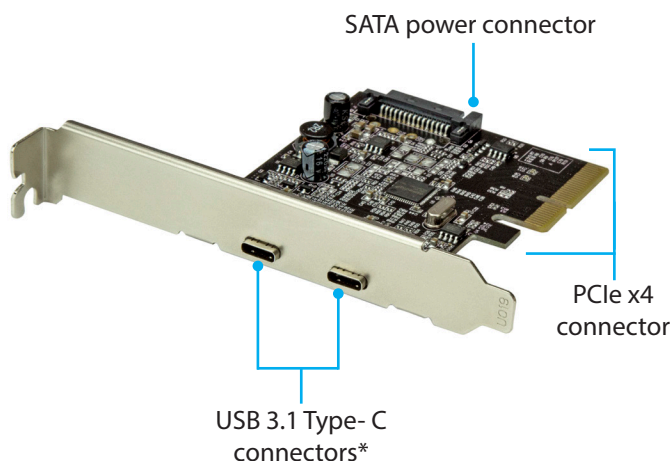
System requirements

- Computer with an available PCI Express® slot (x4, x8, x16)
- 15-pin SATA power connector (optional, but recommended)
- Any of the following operating systems:
 - Windows® 7 (32-bit or 64-bit)
 - Windows 8 (32-bit or 64-bit)
 - Windows 8.1 (32-bit and 64-bit)
 - Windows 10 (32-bit and 64-bit)
 - Windows Server 2012
 - macOS 10.9
 - macOS 10.10
 - Linux® 3.5 to 4.4 (LTS versions only)

Operating system requirements are subject to change. For the latest requirements, please visit www.StarTech.com/PEXUSB312C2.

Product diagram

*actual product may vary from photos



*USB 3.1 Type-C ports do not support USB Power Delivery or DP Alt Mode.

Hardware installation

Install the USB 3.1 card

WARNING!

USB cards can be severely damaged by static electricity. Make sure that you're properly grounded before you open your computer case or touch your USB card. You should wear an anti-static strap when you install any computer component. If an anti-static strap isn't available, discharge any built-up static electricity by touching a large grounded metal surface for several seconds. Only handle the USB card by its edges and don't touch the gold connectors.

1. Turn off your computer and any devices or peripherals that are connected to it (for example, printers, external hard drives, and so on).
2. Unplug the power cable from the back of your computer.
3. Disconnect any peripheral devices that are connected to your computer.
4. Remove the cover from your computer case. Consult the documentation that came with your computer for details about how to do this safely.
5. Locate an open PCI Express slot and remove the corresponding metal cover plate from the back of your computer case. Consult the documentation that came with your computer for details about how to do this safely. This card works in PCI Express slots of additional lanes (x4, x8, or x16 slots).
6. Gently insert the card into the open PCI Express slot and fasten the bracket to the back of the case.

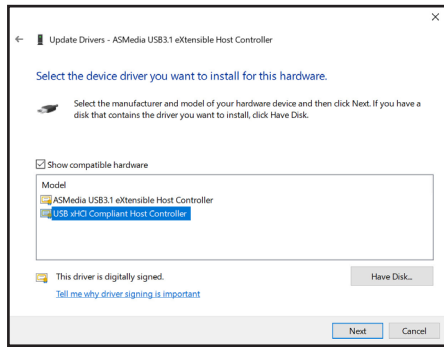
Note: If you install the card into a small form factor or a low-profile desktop system, it may be necessary to replace the preinstalled standard-profile bracket with the included low-profile (half-height) installation bracket.
7. (Optional): Connect a 15-pin SATA power connector from your computer's power supply to the SATA power connector on the card.
8. Place the cover back onto your computer case.
9. Reconnect the power cable to the back of your computer.
10. Reconnect all of the peripheral devices that you disconnected in step 3.

Software installation

The drivers should install automatically, however, if they don't, you will need to manually install the driver. For more information, see the instructions below.

Install the driver on a computer running Windows

1. If the **Found New Hardware** dialog box appears on your screen, close the dialog box or click **Cancel**.
2. Navigate to the **Device Manager**.
3. On the list of installed devices, right-click on **ASMedia USB3.1 eXtensible Host Controller**.
4. Select **Update Driver** from the pop-up menu.
5. On the **How do you want to search for drivers** screen, select the **Browse my computer for driver software** link.
6. Click on the **Let me pick from a list of available drivers on my computer** link.
7. Select, **USB xHCI Compliant Host Controller**.



USB xHCI Compliant Host Controller

8. Click the **Next** Button.
9. Click the **Close** button once the installation is complete.

FCC Compliance Statement

This equipment has been tested and found to comply with the limits for a Class B digital device, pursuant to part 15 of the FCC Rules. These limits are designed to provide reasonable protection against harmful interference in a residential installation. This equipment generates, uses and can radiate radio frequency energy and, if not installed and used in accordance with the instructions, may cause harmful interference to radio communications. However, there is no guarantee that interference will not occur in a particular installation. If this equipment does cause harmful interference to radio or television reception, which can be determined by turning the equipment off and on, the user is encouraged to try to correct the interference by one or more of the following measures:

- Reorient or relocate the receiving antenna.
- Increase the separation between the equipment and receiver.
- Connect the equipment into an outlet on a circuit different from that to which the receiver is connected.
- Consult the dealer or an experienced radio/TV technician for help

This device complies with part 15 of the FCC Rules. Operation is subject to the following two conditions: (1) This device may not cause harmful interference, and (2) this device must accept any interference received, including interference that may cause undesired operation. Changes or modifications not expressly approved by StarTech.com could void the user's authority to operate the equipment.

Industry Canada Statement

This Class B digital apparatus complies with Canadian ICES-003.
Cet appareil numérique de la classe [B] est conforme à la norme NMB-003 du Canada.
CAN ICES-3 (B)/NMB-3(B)

Use of Trademarks, Registered Trademarks, and other Protected Names and Symbols

This manual may make reference to trademarks, registered trademarks, and other protected names and/or symbols of third-party companies not related in any way to StarTech.com. Where they occur these references are for illustrative purposes only and do not represent an endorsement of a product or service by StarTech.com, or an endorsement of the product(s) to which this manual applies by the third-party company in question. Regardless of any direct acknowledgement elsewhere in the body of this document, StarTech.com hereby acknowledges that all trademarks, registered trademarks, service marks, and other protected names and/or symbols contained in this manual and related documents are the property of their respective holders.

Linux® is the registered trademark of Linus Torvalds in the U.S. and other countries.

USB Type-C™ and USB-C™ are trademarks of USB Implementers Forum.

Windows is a registered trademark of Microsoft Corporation in the United States and/or other countries.

Technical Support

StarTech.com's lifetime technical support is an integral part of our commitment to provide industry-leading solutions. If you ever need help with your product, visit www.startech.com/support and access our comprehensive selection of online tools, documentation, and downloads.

For the latest drivers/software, please visit www.startech.com/downloads

Warranty Information

This product is backed by a two-year warranty.

StarTech.com warrants its products against defects in materials and workmanship for the periods noted, following the initial date of purchase. During this period, the products may be returned for repair, or replacement with equivalent products at our discretion. The warranty covers parts and labor costs only. StarTech.com does not warrant its products from defects or damages arising from misuse, abuse, alteration, or normal wear and tear.

Limitation of Liability

In no event shall the liability of StarTech.com Ltd. and StarTech.com USA LLP (or their officers, directors, employees or agents) for any damages (whether direct or indirect, special, punitive, incidental, consequential, or otherwise), loss of profits, loss of business, or any pecuniary loss, arising out of or related to the use of the product exceed the actual price paid for the product. Some states do not allow the exclusion or limitation of incidental or consequential damages. If such laws apply, the limitations or exclusions contained in this statement may not apply to you.