



USB to Video Multi Monitor Video Adapter Quick Installation Guide

Introduction

The *USB to Video Multi Monitor Video Adapter* allows you to connect a monitor, LCD or projector to your desktop or notebook PC and use it as an extended desktop or as an additional larger/different display for your main screen.

Features and Benefits

- Compliant with Universal Serial Bus 2.0 Specification
- Display modes: primary, extended and mirror
- Supports 60Hz and 75Hz monitor refresh rates
- Display rotation: 0, 90, 180 270 degrees
- User friendly display configuration software

System Requirements

- Desktop or notebook PC with an available USB 2.0 port
- Windows® 8 (32-/64-bit) / 7 (32-/64-bit) / XP (32-/64-bit) / Server 2003 & 2008 (32-/64-bit) / Server 2008 R2

Package Contents

- *USB to Video Multi Monitor Adapter*
- DVI to VGA adapter (JU-DV0211-S1 only)
- Driver CD
- Quick installation guide

Layout

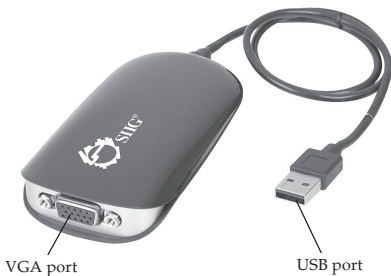


Figure 1: USB to VGA Multi Monitor Video Adapter



Figure 2: USB to DVI/VGA Multi Monitor Video Adapter



Figure 3: USB to DVI/VGA with DVI to VGA Adapter

Driver Installation

Make sure the proper version driver for your graphics card is installed, the *USB to Video* is not designed to work with Windows' *Standard VGA Graphics Adapter* driver.

Warning: DO NOT plug your *USB to Video* adapter into your computer's USB port until instructed to do so. The driver installation will fail if the *USB to Video* adapter is plugged in prematurely.

Windows 8 (32-/64-bit)

1. Insert the driver CD. Close the CD autoplay box if prompted.
2. Click **Windows key** and **R**, type **D:\setup.exe**, click **OK**. (Change **D:** to match your CD/DVD-ROM drive letter)
3. At User Account Controls, click **Yes**.
4. Click **Next**, select **I accept the terms of the license agreement**, click **Next**.
5. The install wizard will copy the drivers and configure your system. Do not interrupt this process.

6. Select **Yes, I want to restart my computer now**, then click **Finish**.
7. Connect your second monitor to the *USB to Video* and turn it on.
8. When Windows resumes, plug the *USB to Video* into the computer, the driver will install automatically.

Windows 7 (32-/64-bit) / Server 2008 R2

1. Insert the driver CD.
2. At the *AutoPlay* box: Click **Open folder to view files**, then double click **Setup**.
If *AutoPlay* doesn't start: Click **Start**, in the **Search programs and files** box, type **D:\setup.exe**, press **Enter**. (Change **D:** to match your CD/DVD-ROM drive letter)
3. At User Account Controls, click **Yes**. For 2008 R2, skip this step.
4. Click **Next**, select **I accept the terms of the license agreement**, click **Next**.
5. The install wizard will copy the drivers and configure your system. Do not interrupt this process.

6. Select **Yes, I want to restart my computer now**, then click **Finish**. This step could take several minutes to appear.
7. Connect your second monitor to the *USB to Video* and turn it on.
8. When Windows resumes, plug the *USB to Video* into the computer, the driver will install automatically.

Windows Vista (32-/64-bit) / Server 2008 (32-/64-bit)

1. Insert the driver CD.
2. At the *AutoPlay* box: Double click **Setup**.
If *AutoPlay* doesn't start: Click **Start**, in the **Start Search** box, type **D:\setup.exe**, press **Enter**. (Change **D:** to match your CD/DVD-ROM drive letter)
3. At User Account Controls, click **Continue**. For Server 2008, skip this step.
4. Click **Next**, select **I accept the terms of the license agreement**, click **Next**.
5. Click **Install** at the Windows Security up to three times. Skip this step if not prompted.
6. Click **Finish**.

7. Connect your second monitor to the *USB to Video* and turn it on, then plug the *USB to Video* into the computer.
8. Click **Install** at the Windows Security. Skip this step if not prompted.
9. Restart Windows to complete the installation.

Windows XP (32-/64-bit) / Server 2003 (32-/64-bit)



1. Insert the driver CD. Click **Start**, then **Run**. Type **D:\setup.exe**, click **OK**. (Change **D:** to match your CD/DVD-ROM drive letter)
2. Click **Next**, select **I accept the terms of the license agreement**, then click **Next**.
3. Click **Continue Anyway** at Hardware Installation up to three times.
4. At InstallShield Wizard Complete, click **Finish**.
5. Connect your second monitor to the *USB to Video* and turn it on, then plug the *USB to Video* into the computer.

6. At the Found New Hardware, select **No, not this time**, then click **Next**. Skip this step if not prompted.
7. Select **Install the Software Automatically**, then click **Next**.
8. Click **Continue Anyway** at Hardware Installation. Skip this step if not prompted.
9. At the Found New Hardware window, click **Finish**, then restart the computer to complete the installation.

To Verify Windows Installation

1. From the desktop, right click **Computer** or **My Computer**, then click **Manage**.
For Windows 8 / 7 / XP / Server 2003: Click **Device Manager**.
For Windows Vista: Click **Continue**, then click **Device Manager**.
For Windows Server 2008 / 2008 R2: Double click **Diagnostics**, then click **Device Manager**.
2. Double click **Universal Serial Bus controllers**, **Trigger II External Graphics** should be displayed.

Display Utility

After successful driver installation either **Super Utility**  or **USB Display Device** icon  will appear in the taskbar by the system clock. This utility allows you to change the viewing modes and resolutions for the *USB to Video*. Access the menu by right clicking the icon.

Super Utility Icon (Windows 8 / 7 / Server 2008 R2)

Display Settings

- **Duplicate these displays:** In this setting, the *USB to Video* will mirror your desktop. You will see the same image on both displays.
- **Extend these displays:** This setting extends your desktop for easy viewing of multiple windows. Windows will move off the primary display and enter the extended display.

Note: To match the physical arrangement of your displays drag the monitor icons into the appropriate position. See **Figure 4: Monitor Orientation**.

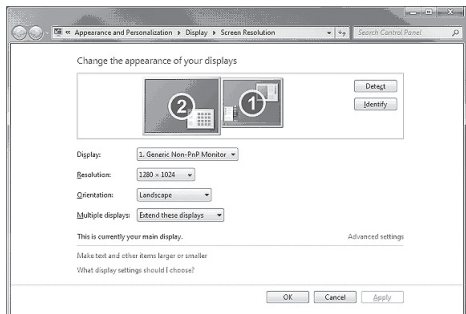


Figure 4: Monitor Orientation

- **Make this my main display:** This setting is active when using your monitors in **extended** mode only. Before selecting this option, enable **Auto Arrange*** (*right click anywhere on the desktop, click **View**, click **Auto Arrange***) to allow your desktop icons to move to the new main display.

***Note:** Without this setting, you will need to drag-n-drop your desktop icons to the new main display.

- **Show desktop only on 1:** This setting turns on display 1 and turns off all other displays.

- **Show desktop only on 2:** This setting turns on display 2 and turns off all other displays.

USB Display Device Icon (Vista / XP / 2003 / 2008)

Viewing Modes

- **Mirror:** In this mode, the *USB to Video* will mirror your desktop. You will see the same image on both displays.
- **Extended:** This mode extends your desktop for easy viewing of multiple windows. Windows will move off the primary display and enter the extended display. **Note:** To match the physical arrangement of your displays see **Monitor Orientation** on page 13.
- **Off:** This setting turns off the *USB to Video* adapter.
- **Primary:** This mode makes the *USB to Video* adapter the main display adapter in the system, and the system's main display will be the extended display*.

***Note:** For systems with the main display turned off, go to **Display Settings**. Select the main display (1) and check **Extend the desktop onto this monitor**.

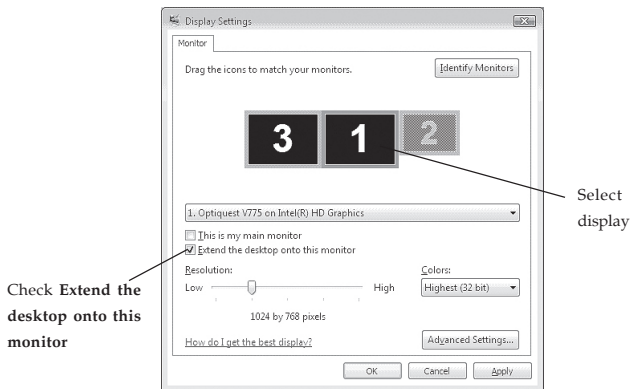


Figure 5: Select Extend the desktop onto this monitor

Monitor Orientation

To open this window, right click the **USB Display Device**  icon, then click **Display Settings**.

Drag the monitor icons to match the physical arrangement of your monitor (In Windows 2000 click the **Settings** tab to display this screen). See **Figure 6**.

Note: This feature is disabled when your monitors are in Mirror mode.

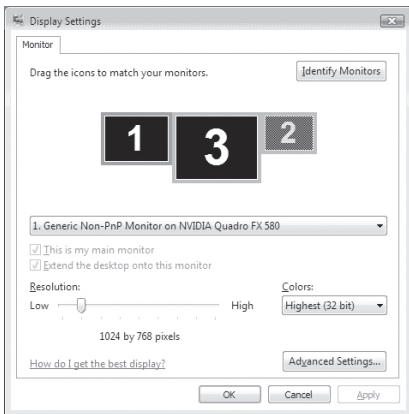


Figure 6: Monitor Orientation

Frequently Asked Questions

Q1: Why won't my DVD video play when I move it over to the extended display?

A1: Some DVD playback software packages do not support playing on a second display adapter.

Q2: There are lines running up and down my screen or the screen is distorted

A2: This is due to a low or unsupported refresh rate. You can change this in **Display Properties/Settings/Advanced/Monitor**. Make sure you select the *USB to Video* and not set the refresh rate higher than what your monitor can support.

Q3: Why can't I make the *USB to Video* the primary display?

A3: Some video cards ship their product with a utility that prevents other video cards from being set as the primary video card. Check the bottom right hand corner of the taskbar for the utility. Disable the utility before switching the *USB to Video* adapter to be the primary display.

Technical Support and Warranty

QUESTIONS? SIIG's **Online Support** has answers! Simply visit our web site at www.siig.com and click **Support**. Our online support database is updated daily with new drivers and solutions. Answers to your questions could be just a few clicks away. You can also submit questions online and a technical support analyst will promptly respond.

SIIG offers a 5-year manufacturer warranty with this product. This warranty covers the original purchaser and guarantees the product to be free of any defects in materials or workmanship for five (5) years from the date of purchase of the product.

SIIG will, at our discretion, repair or replace (with an identical product or product having similar features and functionality) the product if defective in materials or workmanship. This warranty gives you specific legal rights, and you may also have other rights which vary from state to state. Please see our web site for more warranty details.

If you encounter any problems with this product, please follow the procedures below.

A) If it is within the store's return policy period, please return the product to the store where you purchased from.

B) If your purchase has passed the store's return policy period, please follow the steps below to have the product repaired or replaced.

Step 1: Submit your RMA request.

Go to www.siig.com, click **Support**, then **REQUEST A PRODUCT REPLACEMENT** to submit a request to [SIIG RMA](#) or fax a request to 510-657-5962. Your RMA request will be processed, if the product is determined to be defective, an RMA number will be issued.

Step 2: After obtaining an RMA number, ship the product.

- Properly pack the product for shipping. All accessories that came with the original package must be included.
- Clearly write your RMA number on the top of the returned package. SIIG will refuse to accept any shipping package, and will not be responsible for a product returned without an RMA number posted on the outside of the shipping carton.
- You are responsible for the cost of shipping to SIIG. Ship the product to the following address:

SIIG, Inc.

6078 Stewart Avenue

Fremont, CA 94538-3152, USA

RMA #: _____

- SIIG will ship the repaired or replaced product via Ground in the U.S. and International Economy outside of the U.S. at no cost to the customer.

About SIIG, Inc.

Founded in 1985, SIIG, Inc. is a leading manufacturer of IT connectivity solutions (including Serial ATA and Ultra ATA Controllers, FireWire, USB, and legacy I/O adapters) that bridge the connection between Desktop/Notebook systems and external peripherals. SIIG continues to grow by adding A/V and Digital Signage connectivity solutions to our extensive portfolio. SIIG products offer comprehensive user manuals, many user-friendly features, and are backed by an extensive manufacturer warranty. High quality control standards are evident by the overall ease of installation and compatibility of our products, as well as one of the lowest defective return rates in the industry. SIIG products can be found in computer retail stores, mail order catalogs, through major distributors, system integrators, and VARs in the Americas and the UK, and through e-commerce sites.

PRODUCT NAME

USB to Video Multi Monitor Video Adapter

**FCC RULES: TESTED TO COMPLY WITH FCC PART 15, CLASS B
OPERATING ENVIRONMENT: FOR HOME OR OFFICE USE**

FCC COMPLIANCE STATEMENT:

This device complies with part 15 of the FCC Rules. Operation is subject to the following two conditions: (1) This device may not cause harmful interference, and (2) this device must accept any interference received, including interference that may cause undesired operation.

THE PARTY RESPONSIBLE FOR PRODUCT COMPLIANCE

SIIG, Inc.
6078 Stewart Avenue
Fremont, CA 94538-3152, USA
Phone: 510-657-8688

USB to Video Multi Monitor Adapter is a trademark of SIIG, Inc. SIIG and the SIIG logo are registered trademarks of SIIG, Inc. Microsoft and Windows are registered trademarks of Microsoft Corporation. All other names used in this publication are for identification only and may be trademarks of their respective owners.

May, 2013

Copyright © 2013 by SIIG, Inc. All rights reserved.