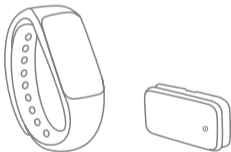


MB20G

# MOVEBAND Display

## Quick Start Guide



CJ81HD0LCAAA

**TCL**

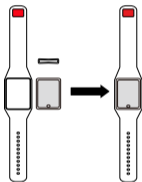
## About the MOVEBAND Display

MOVEBAND Display tracks your daily fitness activity and sleep data, allows you to set your own targets and then motivates you achieve these goals, enabling you to live a healthier life.

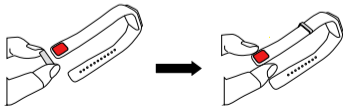
**Note:** MOVEBAND Display can be separated from wristband.

## Wearing your MOVEBAND Display

1. Insert the display into the wristband, taking care that it is oriented as shown below:



2. Pass the wristband strap through the loop.



3. While wearing the wristband as shown below, clasp the buckle to close it.



## Pairing with your phone

### Step 1: Installing the TCL MOVEBAND app.

You can download and install the TCL MOVEBAND app in the following ways:

- Search "TCL MB20G" in the Google Play Store (For Android).
- Search "TCL MB20G" in the App Store (For IOS).
- Scan the following QR code.



## **Step 2: Connecting MOVEBAND to your phone via Bluetooth.**

1. Create an account.
2. Input your personal information before use, including gender, height, weight, and age so as to ensure data accuracy.
3. Turn on Bluetooth to search for your band.
4. Enter the 6 digit verification code displayed on your band.
5. Confirm and pair the application with your band.

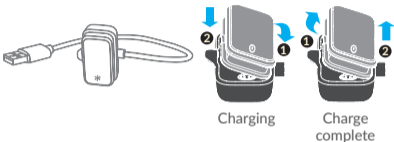
**Note: One band can pair with multiple accounts, but only one each time.**

## **Features**

- Track daily fitness activity including steps taken, distance covered, calories burned, etc.
- Track sleep quality including hours slept, time taken to fall asleep, wake-up times, etc.
- Reminders to push you move when you have been sedentary for too long.
- In depth data analysis and customised targets.
- Ergonomic design, comfortable to wear.
- Simple synchronisation via Bluetooth.
- Up to five days of battery life.
- Splash proof.

## Charging

Remove the MOVEBAND Display from the wristband and place inside the charging dock. Plug the USB port into a computer or USB charger for power.




### Notes:



- Following air regulation, the battery of your product is not charged. Charge it first before using.
- If the charging port is corroded or dirty, it will seriously affect the charging process. After playing sports, wipe away any sweat or dirt from your band before charging.

## Low battery reminding

When power is  $\leq 10\%$ , your band will vibrate to remind you and the low battery icon will show on the display of your band.

## Powering on/off your MOVEBAND Display

- Long press  for 3 seconds to power on your MOVEBAND Display.

- Long press  for 3 seconds to power off your MOVEBAND Display when charging.
- Long press  for 8 seconds to restart your MOVEBAND Display.

## Health and safety information

All users should read the following warnings before using MOVEBAND Display to reduce the risk of personal injury, discomfort or property damage. Review the hardware and software recommendations for use of the band. Risk of discomfort may increase if recommended hardware and software is not used.

### **Child safety**

Do not let children use MOVEBAND Display and / or play with it and accessories without adult supervision. Small components may present a choking hazard to children.

### **Battery Handling & Safety**

Only use the battery and charger supplied, or manufacturer approved replacements intended for use with your band. Using other batteries and chargers could be dangerous.

Do not disassemble or short-circuit the battery. Accidental short-circuiting can occur if a metallic object such as a key, paper clip, or pen touches the terminals of the battery.

Improper battery use may result in a fire, explosion, or other hazard. If you believe the battery has been damaged, do not use it and take it to a service center for testing.

## Environment

You alone are responsible for how you use your band and any consequences of its use.

Use of your band is subject to safety measures designed to protect users and their environment.

- Always treat your band with care and keep it in a clean and dust-free place.
- Do not expose your band to liquid, moisture or high humidity.
- Do not drop, throw or try to bend your band.
- Do not use harsh chemicals, cleaning solvents, or aerosols to clean your band.
- Do not paint your band.
- Do not attempt to disassemble your band, only authorized personnel must do so.
- Do not expose your band to extreme temperatures, minimum -10 and maximum 55 degrees Celsius.
- Do not leave your band in direct sunlight. Exposure to direct sunlight can damage it.

## Certification

### WEEE Approval

This device is in compliance with the essential requirements and other relevant provisions of the Waste Electrical and Electronic Equipment Directive 2012/19/EU (WEEE Directive).



This symbol on device means that these products must be taken to collection points at the end of their life:

- Municipal waste disposal centres with specific bins for these items of equipment.

- Collection bins at points of sale.

They will then be recycled, preventing substances being disposed of in the environment, so that their components can be reused.

CAUTION RISK OF EXPLOSION IF BATTERY IS REPLACED BY AN INCORRECT TYPE. DISPOSE OF USED BATTERIES ACCRDIING TO THE INSTRUCTIONS.

Following air regulation, the battery of your product is not charged. Please charge it first.

## RoHs Approval

This device is in compliance with the restriction of the use of certain hazardous substances in electrical and electronic equipment Directive 2011/65/EU (RoHs Directive).

## Licences



The Bluetooth word mark and logos are owned by the Bluetooth SIG, Inc. and any use of such marks by TCL Communication Ltd. and its affiliates is under license. Other trademarks and trade names are those of their respective owners.

**TCL MB20G Bluetooth Declaration ID D031563**



We hereby point out that the end user warranty for infringement IPR is solely limited to the EU/EEA/Switzerland.

If and to the extent that the Product is exported, taken with, or used by end customer or end user outside the EU/EEA/Switzerland any responsibility, warranty or indemnification of manufacturer and its suppliers in regard to the Product expires (including any indemnification in regard to infringement IPR).

## General information

- Internet address: [www.tclcom.com/wearables/](http://www.tclcom.com/wearables/)
- Hotline: See the "SERVICES" leaflet that came with your device or go to our website.
- Manufacturer: TCL Communication Ltd.
- Address: 5/F, Building 22E, 22 Science Park East Avenue, Hong Kong Science Park, Shatin, NT, Hong Kong.

On our website, you will find our FAQ (Frequently Asked Questions) section. You can also contact us by email to ask any questions you may have.

This radio equipment operates with the following frequency bands and maximum radio-frequency power:

Bluetooth: < 20 dBm

Hereby, TCL Communication Ltd. declares that the radio equipment type TCL MB20G is in compliance with Directive 2014/53/EU.

The full text of the EU declaration of conformity is available at the following internet address: [http://www.tclcom.com/wearables/EU\\_doc](http://www.tclcom.com/wearables/EU_doc).

The description of accessories and components, including software, which allow the radio equipment to operate as intended, can be obtained in the full text of the EU declaration of conformity at the following internet address: [http://www.tclcom.com/wearables/EU\\_doc](http://www.tclcom.com/wearables/EU_doc).

## Warranty

The device is warranted against any deviation from technical specifications for a period of twelve (12)<sup>(1)</sup> months from the date specified on your original invoice.

Under the terms of this warranty, you must immediately inform your vendor in case of a conformity defect on this device, and present a proof of purchase.

The vendor or repair center will decide whether to replace or repair this device, as appropriate.

Repair or replacement of this device is warranted for ONE (1) month unless there are statutory provisions to the contrary.

This warranty shall not apply to damage or defects to this device due to:

- 1) Not following the instructions for use or installation.
- 2) Not being compliant with technical and safety standards applicable in the geographical area where this device is used.
- 3) Improper maintenance of sources of energy, and of the overall electric installation.

---

<sup>(1)</sup> The warranty period may vary depending on your country.

- 4) Accidents or consequences of theft of the vehicle in which this device is transported, acts of vandalism, lightning, fire, humidity, infiltration of liquids, inclement weather.
- 5) Connecting to or integrating into this device any equipment not supplied or not recommended by the manufacturer.
- 6) Any servicing, modification or repair performed by individuals not authorised by the manufacturer, the vendor or the approved maintenance centre.
- 7) Use of this device for a purpose other than that for which it was designed.
- 8) Malfunctions caused by external causes (e.g., radio interference from other equipment, power voltage fluctuations).
- 9) Faulty connections resulting from unsatisfactory radio transmission or caused by the absence of radio relay coverage.

Warranty is also excluded for this device on which markings or serial numbers have been removed or altered.

This device is also warranted against hidden defects (defects inherent in the design, manufacture, etc.).

There are no other express warranties than this printed limited warranty, expressed or implied, of any nature whatsoever.

© Copyright 2017 TCL Communication Ltd. All rights reserved.  
TCL Communication Ltd. reserves the right to alter material or technical specification without prior notice.