

Epson Stylus[®] Photo R2880

Fine art redefined.





© Arthur Meyerson



EXHIBITION QUALITY | The Epson Stylus Photo R2880, featuring Epson UltraChrome K3™ with Vivid Magenta Ink technology, delivers unprecedented prints to elevate your art form.

More quality. More control. More inspiration.

Complete creative control. It's a worthy goal, but all too often our technology — the equipment we use — limits our options and dictates our decisions, which is where the Epson Stylus Photo R2880 comes in. It's the printer that professional and fine art photographers have long desired. An unprecedented level of control allows you to go where inspiration takes you, to explore your creative options and let your visions be realized. It's the printer that takes exhibition quality prints to new heights.

It begins with Epson UltraChrome K3 with Vivid Magenta, an innovative ink set that offers an astounding color gamut of brilliant reds, blues and purples that will amaze even the most critical viewer.

The 13-inch Epson Stylus Photo R2880 also includes Radiance™ technology, which ensures seamless color transitions and immaculate highlight and shadow detail. Additionally, three-level Black technology offers superior gray balance and outstanding tonal range. And, Advanced Black-and-White Photo Mode provides precision control for neutral or toned black-and-white prints.

When it comes to media handling, the Epson Stylus Photo R2880 will expand rather than dictate your possibilities. Print on fine art paper, roll paper or 1.3 mm thick art boards. And, whatever your choices, you can rest assured that the 1-inch wide, permanent print head will deliver professional performance. In addition, nozzle check technology and Epson PreciseColor™ help ensure that printing is consistent, print-to-print.

The Epson Stylus Photo R2880 is the next step in the evolution of photo printing. It gives you the quality, control and versatility you need, not merely to refine your art, but to completely redefine it.



ASCEND

Take your prints to extraordinary levels with Epson UltraChrome K3 with Vivid Magenta, a professional, 8-color, pigment ink set that offers an extremely wide color gamut.

Innovation delivered.

Epson UltraChrome K3 with Vivid Magenta.

Long known for being first to market with technical innovations that enhance photo printing, Epson has achieved a new standard with Epson UltraChrome K3. This highly acclaimed 8-color, pigment-based ink set is rapidly raising the bar in the professional printing industry. And now, with the addition of Epson's revolutionary new Vivid Magenta pigments, this ink technology virtually redefines what is possible with professional color and black-and-white prints.

Among its many benefits, you will discover:

- A newer, high-density form of magenta pigments that produces a wider color gamut — especially reds, blues and purples
- An ink palette that includes Cyan, Light Cyan, Vivid Magenta, Vivid Light Magenta, Yellow, Light Black, Light Light Black, Matte Black or Photo Black



- A new formulation of Epson Microcrystal Encapsulation™ technology for reduced gloss differential



- Professional print permanence ratings of up to 200 years for truly sellable quality prints¹
- Color stability immediately after printing eliminates short-term color shifting
- Denser, richer blacks

These advantages combine to create images with such superior color and clarity, they have an almost three-dimensional look. A result that far exceeds what can be achieved in a traditional color photograph.

And, while the reds, blues and purples are dramatic, so too are the blacks. Three-level Black technology delivers richer blacks along with an unsurpassed gray balance and stunning tonal range. The end result — whether a vibrant sea of wildflowers, a portrait in subdued light or anything in between — can be delivered with all the intensity you saw through the lens.

The color gamut optimized.

To create smoother color transitions and optimize highlight and shadow detail, Epson partnered with color scientists at the Rochester Institute of Technology to develop Radiance technology. This advanced mathematical architecture maximizes the attainable



radiance™



ASTOUND

Produce stunning neutral or toned black-and-white prints with Epson's innovative Advanced Black-and-White Photo Mode, your key to intuitive and consistent control.

color gamut to produce matchless prints with a truer photographic look.

By utilizing each color in a more efficient manner, Radiance technology optimizes the color gamut. It also optimizes your colors so they appear consistent under varying lighting conditions – from gallery lighting to the controlled light of your studio.

This exclusive technology also reduces grain and dramatically improves color transitions to reproduce even the subtlest gradations.

Print head superiority.

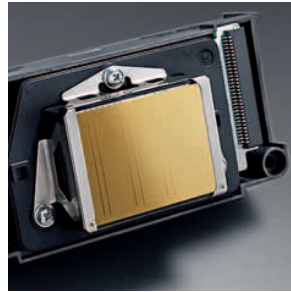
The Epson Stylus Photo R2880's permanent, high performance print head decreases maintenance and increases reliability by incorporating a unique, ink-repelling coating. And, an innovative Mist Collection System keeps the inside of the printer cleaner. These enhancements help ensure trouble-free production and prolong printer life, making the Epson Stylus Photo R2880 not only an invaluable creative tool, but a wise investment as well.



Poor gradation



Smooth gradation with Radiance technology



A model of consistency.

Every Epson Stylus Photo R2880 meets the standards of Epson PreciseColor manufacturing. This rigorous process applies colorimetric calibration to ensure that individual printers of the same model produce prints that are virtually indistinguishable from one another.

For those who would like to utilize the Epson UltraChrome K3 with Vivid Magenta color gamut even further, and improve color accuracy at the same time, premium ICC profiles are available for download. These enhanced profiles are available for a wide variety of Epson media without the need for additional calibration hardware or software.

The black-and-white advantage.

Professionals who work in black-and-white will discover that the Epson Stylus Photo R2880 provides an amazingly consistent level of control for neutral or toned black-and-white prints. This is due to an exclusive, Advanced Black-and-White Photo Mode that lets you choose from one of four presets – neutral, warm, cool or sepia. Or, you can further fine-tune your image with custom slider bars and the color wheel for even more precise control. Then, once you've created your custom settings, they can be conveniently saved and reapplied to streamline your workflow.



© Steve McCurry

EXHIBIT

Create exhibition quality prints with Radiance technology for exceptional color transitions, remarkable highlight and shadow detail, and consistent color under virtually any light.

Multiple media handling options.

This printer supports a full range of professional and fine art media, not only to meet your creative needs, but to fuel your creative visions. Here are some of the possibilities:

- Print directly on fine art paper or 1.3 mm thick art boards
- Easily handle glossy, matte and luster papers, as well as thick fine art media, canvas and watercolor paper
- Print directly onto ink jet printable CDs and DVDs
- Generate breathtaking panoramas on roll paper up to 13 x 44



With so many options, you'll be assured stunning results whether you are printing dramatic images for a gallery show, or simply customizing your digital portfolio on a CD.

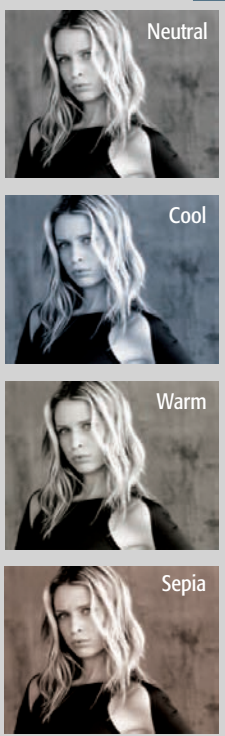
Computer savvy.

For added convenience, the Epson Stylus Photo R2880 includes two USB 2.0 ports, so there's no more switching cables back and forth. You can connect two computers to the printer simultaneously for convenient printing from either.

A true professional.

Providing previously unheard of creative control, flawless color imaging and versatile media handling, the Epson Stylus Photo R2880 is poised to become a new standard by which all professional quality photo printers are measured.

Quick Toning Presets



Color Controls

Printer Color Adjustment

Color Toning: Neutral
Tone: Darker

Before: [Image] → After: [Image]

Brightness: [Slider 0]

Contrast: [Slider 0]

Shadow Tonality: [Slider 0]

Highlight Tonality: [Slider 0]

Max Optical Density: [Slider 0]

Highlight Point Shift: Off

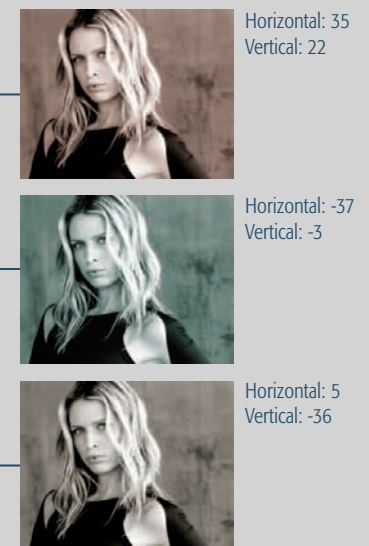
Color Wheel: Y, R, G, B, C, M

Horizontal: 0
Vertical: 0

Buttons: Default, OK, Cancel, Help

Photograph © Greg Gorman

Precise Tone Control



Advanced Black-and-White Photo Mode. Part of a powerful workflow to take control of your black-and-white prints. Choose from the preset Color Toning menu or fine tune your image further with custom slider bars and the precise tone color wheel.

Epson Stylus Photo R2880 Printer Specifications

Printing Technology

Advanced, MicroPiezo[®] 8-color, pigment ink jet technology, optimized for photo printing

Ink Type

Epson UltraChrome K3 with Vivid Magenta pigment ink

Ink Palette

8-color (Cyan, Light Cyan, Vivid Magenta, Vivid Light Magenta, Yellow, Light Black, Light Light Black, Matte Black or Photo Black)

Ink Cartridge Configuration²

9 individual ink cartridges – interchangeable Matte or Photo Black

Droplet Technology

Smallest droplet size 3 picoliters
Advanced MicroPiezo print head with AMC™ (Advanced Meniscus Control) can produce up to 3 different droplet sizes per line

Nozzle Configuration

180 nozzles x 8

Maximum Resolution (dots per inch)

5760 x 1440 optimized dpi

Maximum Print Speed³

8" x 10" photo	1 min 36 sec (SuperFine Mode)
	2 min 18 sec (Photo Mode)
11" x 14" photo	2 min 36 sec (SuperFine Mode)
	3 min 55 sec (Photo Mode)

Direct CD/DVD Printing

Ink jet printable CDs and DVDs

Paper Handling

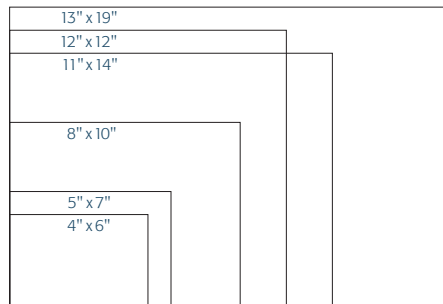
Maximum paper width	
Auto sheet feeder	13"
Manual – Roll paper path (rear)	13"
Manual – Front	13"
Roll paper	13"
Maximum printable area	13" x 44" BorderFree [®]

Borderless Photo Sizes

3.5" x 5", 4" x 6", 5" x 7", 8" x 10", A4 (8.3" x 11.7"), letter (8.5" x 11"), 11" x 14", 12" x 12", B (11" x 17"), A3 (11.7" x 16.5") and Super B (13" x 19") sizes

Paper Sizes

3.5" x 5", 4" x 6", 5" x 7", 8" x 10", A4 (8.3" x 11.7"), letter (8.5" x 11"), legal (8.5" x 14"), 11" x 14", 12" x 12", B (11" x 17"), A3 (11.7" x 16.5"), Super B (13" x 19"), user definable, plus 8.3" and 13" wide panoramic roll papers



Paper Types

Supports plain paper, Epson Bright White Paper, Presentation Paper Matte, Premium Presentation Paper Matte, Premium Presentation Paper Matte Double-sided, Ultra Premium Presentation Paper Matte, Photo Paper Glossy, Premium Photo Paper Glossy, Premium Photo Paper Semi-gloss, Ultra Premium Photo Paper Luster, Exhibition Fiber Paper, Watercolor Paper Radiant White, Velvet Fine Art Paper, UltraSmooth[®] Fine Art Paper, Premium Canvas Satin, Premium Canvas Matte, PremierArt™ Matte Scrapbook Photo Paper and ink jet printable CD/DVDs.

Special Media Support

Roll paper	8.3" and 13" rolls
Fine art paper	Manual – Roll paper path (rear)
Direct CD/DVD printing	

Maximum Paper Thickness

1.3 mm thick (Straight through, Manual – Front paper path)

Paper Capacity

Auto sheet feeder	120 sheets (plain paper)
	30 sheets (photo paper)
Manual – Roll	1 sheet (fine art paper)
Manual – Front	1 sheet (poster board)
CD/DVD tray	1 ink jet printable CD/DVD

Connectivity

Hi-Speed USB 2.0 (2 ports)
PictBridge™ (1 port)

Operating Systems

Windows [®]	Windows Vista [®] , XP Professional x64, XP and 2000
Macintosh [®]	Mac OS [®] X 10.3.9, 10.4.x – 10.5.x

Software Included

Epson Print CD software

Color Management

Epson Standard (sRGB), Adobe[®] RGB and ICM or ColorSync[®] color management using ICC profiles

Color Management Solutions

Premium ICC color profiles

Weight and Dimensions (W x D x H)

Weight	27.1 lb
Printing	24.3" x 31.4" x 16.3"
Storage	24.3" x 12.7" x 8.4"

Sound Level

51 dB (max.)

Product/Accessories

Product/Accessories	Part Numbers
Epson Stylus Photo R2880	C11CA16201
Epson Stylus Photo R2880 (Canada)	C11CA16202
96 Photo Black UltraChrome K3 ink cartridge	T096120
96 Cyan UltraChrome K3 ink cartridge	T096220
96 Vivid Magenta UltraChrome K3 ink cartridge	T096320
96 Yellow UltraChrome K3 ink cartridge	T096420
96 Light Cyan UltraChrome K3 ink cartridge	T096520
96 Vivid Light Magenta UltraChrome K3 ink cartridge	T096620
96 Light Black UltraChrome K3 ink cartridge	T096720
96 Matte Black UltraChrome K3 ink cartridge	T096820
96 Light Light Black UltraChrome K3 ink cartridge	T096920
Epson ink jet cleaning sheets	S041150

Service agreements

1-year Extended Service Plan	EPPSNHEIJEX1
2-year Extended Service Plan	EPPSNHEIJEX2

Environmental Conditions

Temperature	
Operating	50° to 95°F (10° to 35°C)
Storage	-4° to 104°F (-20° to 40°C)
Relative humidity	
Operating	20 – 80%
Storage	5 – 85% (without condensation)

Standards

Safety/EMC	UL60950-1 FCC Part 15 Subpart B Class B CAN/CSA-C22.2 No. 60950-1 CAN/CSA-CEI/IEC CISPR 22 Class B
------------	---

Power Requirements

Rated voltage	120 VAC
Rated frequency	50 – 60 Hz
Rated current	0.5 A (1.0 A max.)

Power Consumption

Approx. 20 W	ISO/IEC 24712 letter pattern
Approx. 4 W	Sleep Mode

Warranty

One-year limited warranty in the U.S. and Canada

¹ Ink lightfastness rating based on accelerated testing of prints on specialty media, displayed indoors, under glass. Actual print stability will vary according to media, printed image, display conditions, light intensity, humidity and atmospheric conditions. Epson does not guarantee longevity of prints. For maximum print life, display all prints under glass or lamination or properly store them. Visit www.wilhelm-research.com for the latest information.

² We recommend that you use genuine Epson cartridges. The use of other products may affect your print quality and could result in printer damage. Yields vary considerably based on images printed, print settings, paper type, frequency of use and temperature. For print quality, a variable amount of ink remains in the cartridge after the "Replace cartridge" indicator comes on. The printer ships with full cartridges and part of the ink from the first cartridges is used for priming the printer. See www.epson.com/cartridgeinfo for more information about cartridges.

³ Color photo speed on Premium Photo Paper Glossy measured from start of paper feed. Additional processing time will vary based on system configuration, software application and page complexity. See www.epson.com/printspeed for more information about print speeds.



EPSON
EXCEED YOUR VISION

Epson America, Inc.: 3840 Kilroy Airport Way, Long Beach, CA 90806

Epson Canada, Ltd.: 3771 Victoria Park Avenue, Toronto, Ontario M1W 3Z5

www.epson.com

Specifications and terms are subject to change without notice. Epson, Epson Stylus and MicroPiezo are registered trademarks, Epson Exceed Your Vision is a registered logomark and Epson UltraChrome K3 and MicroCrystal Encapsulation are trademarks of Seiko Epson Corporation. BorderFree and UltraSmooth are registered trademarks and AMC, PreciseColor, Radiance and its logo are trademarks of Epson America, Inc. All other product and brand names are trademarks and/or registered trademarks of their respective companies. Epson disclaims any and all rights in these marks. Copyright 2008, Epson America, Inc. CPD-25416oss 6/08 PC