

VisionTek® THUNDERBOLT™ 3 MINI eGFX ENCLOSURE



Quick Start Guide

The eGFX Enclosure with Barco MXRT display controller allows you to drive powerful graphics from a laptop computer using a Thunderbolt™ 3 connection.

Before using the enclosure, closely follow the setup instructions and ensure you are using a Barco-approved mobile workstation running Windows 10.

For further information on this product, including compatible mobile workstations, installation, and troubleshooting, visit:

www.barco.com/egfx

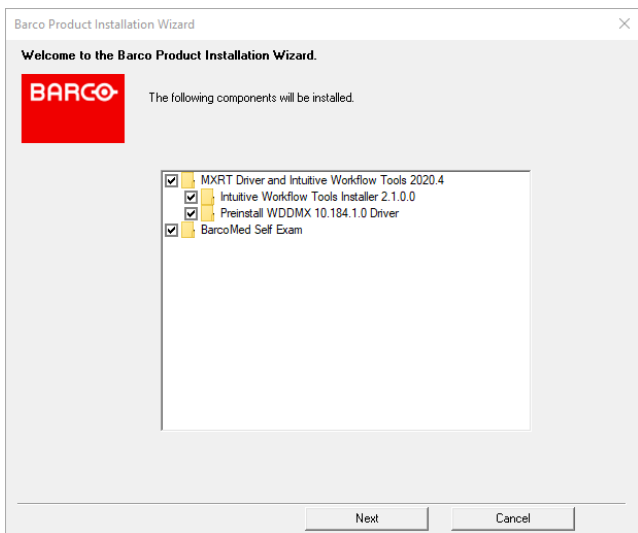
Software Setup:

Note: Your computer's Thunderbolt™ 3 ports might not function properly until you update one or more of the following on your computer:

- *BIOS*
- *Thunderbolt™ firmware*
- *Thunderbolt™ 3 controller drivers*
- *Thunderbolt™ 3 software*

1. Ensure the latest BIOS, Thunderbolt™ and Windows updates have been installed. Visit your PC manufacturer's website to download the latest software.
2. Download the latest version of the Barco MXRT Driver Installation Package for your region from the following URL:
<https://www.barco.com/mxrt>
3. Driver version 10.171.1.0 or later is required, but using the latest version is strongly recommended.

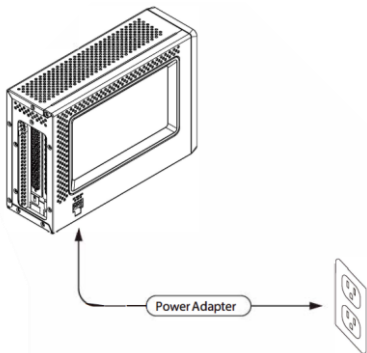
3. Select the self-extracting installation package file and begin the installation process with local administrator rights to install software on your computer.
4. Make sure to select all software packages and proceed with installation.



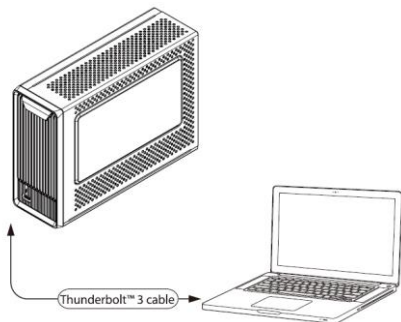
Note: The computer may restart multiple times during the installation process.

Hardware Setup:

1. Once the driver has successfully installed, connect the AC adapter to the enclosure and the AC adapter to a power outlet . Turn on the AC adapter.



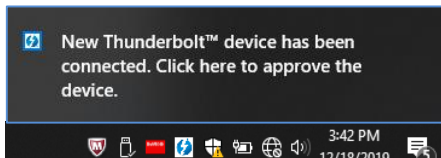
2. Connect the Thunderbolt™ 3 cable to the computer.



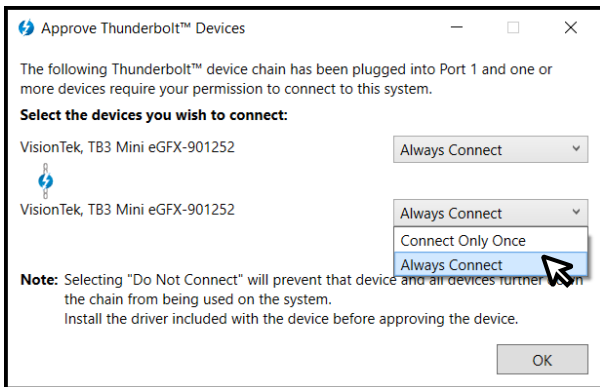
Note: Use only active Thunderbolt™ 3 cables for runs longer than 0.5m.

Thunderbolt™ Configuration:

1. After connecting the eGFX enclosure , the Thunderbolt™ device will be detected by the computer. Click to approve the device.



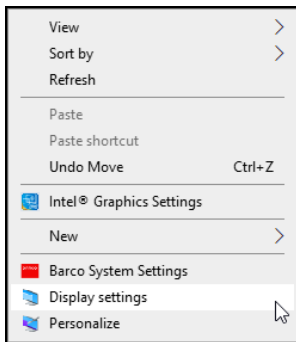
2. When the system shows the dialogue box below, select “Always Connect” for each controller. Click “OK” to complete setup.



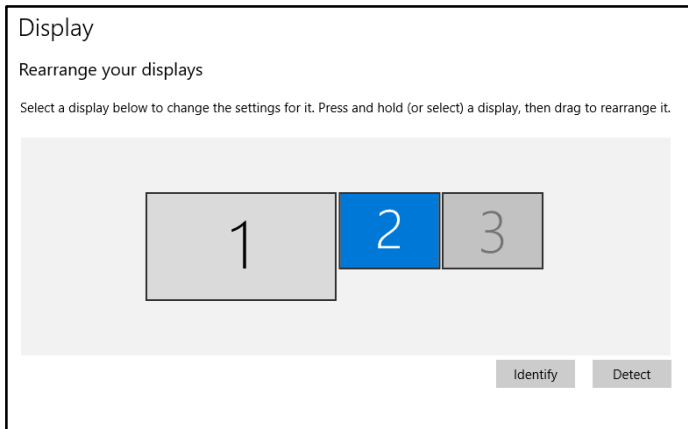
3. The system should recognize your displays at this point.

Display Configuration:

1. To extend the desktop and configure the displays, access the Display Settings panel by right clicking on the desktop and selecting “Display settings”.

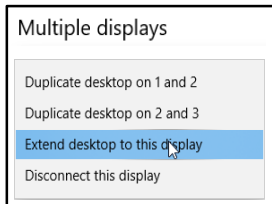


2. Depending on your configuration, the displays should be visible similar to the image below.

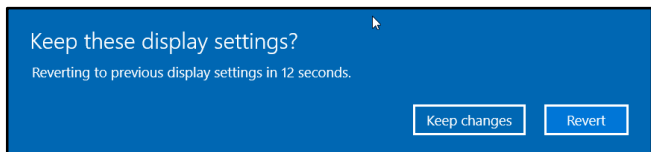


If the desktop is not automatically extended to connected displays, proceed to Step 3.

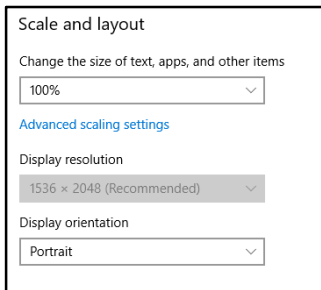
3. Select the target display in the “Rearrange your displays” window in Step 2. In the “Multiple Displays” dialogue box select “Extend desktop to this display”.



Always be sure to select “Keep changes” when prompted.



4. In the “Scale and layout” window select the appropriate resolution for your display.



At this point your system setup is complete. See the following page for additional support resources.

For product support contact:

Website:

www.barco.com/egfx

Healthcare USA/Canada

Toll-free call: 1 (866) 992-2726
8 am - 5 pm Monday thru Friday

Healthcare Belgium

Paid phone: +32 56 23 33 76
8 am - 5 pm Monday thru Friday

Healthcare UK

Free phone: 0800 368 1817
8 am - 5 pm Monday thru Friday