

# **Epson® KDS Setup Guide**



---

# Contents

<b>Epson KDS Setup Guide .....</b>	<b>5</b>
<b>Setting Up the Hardware .....</b>	<b>6</b>
About the Epson Kitchen Display System (KDS).....	6
KDS Hardware and Software Requirements .....	6
Setting Up a Direct Connect System .....	7
Setting Up a Multi-Station System.....	7
<b>Running the KDS Configuration Utility.....</b>	<b>9</b>
About the Epson KDS Configuration Utility.....	9
Getting Started with the KDS Configuration Utility.....	9
Adding and Configuring Devices .....	15
Adding and Configuring Displays .....	16
Configuring Order Tiles .....	19
Adding Menu Items and Recipes.....	20
Completing Setup.....	23
<b>Trademarks .....</b>	<b>24</b>
<b>Copyright Notice .....</b>	<b>25</b>
Copyright Attribution.....	25



---

# Epson KDS Setup Guide

Welcome to the Epson KDS (Kitchen Display System) *Setup Guide*.

For a printable PDF copy of this guide, [click here](#).

---

# Setting Up the Hardware

See the instructions in these sections to connect the hardware for your kitchen display system (KDS).

[About the Epson Kitchen Display System \(KDS\)](#)

[Setting Up a Direct Connect System](#)

[Setting Up a Multi-Station System](#)

## About the Epson Kitchen Display System (KDS)

The Epson U220-i and T88V-i printers include powerful on-board systems that drive a Kitchen Display System (KDS) capable of controlling multiple screens and stations.

The Epson KDS can be arranged in two configurations: a single-screen or multi-screen system.

A single-screen system is comprised of the following:

- The Epson TM-U220-i or TM-T88V-i Direct-Connect printer with on-board KDS controller
- A POS terminal connected to the printer via a USB or Ethernet connection
- A bump bar connected directly to the printer via USB connection
- A monitor connected directly to the printer via VGA connection

The multi-screen system is comprised the following:

- The Epson TM-U220-i or TM-T88V-i Multi-Station printer with on-board KDS controller
- A POS terminal connected to the printer via a USB, serial, or Ethernet connection
- Up to 9 stations with bump bars, monitors, and Epson KDS expansion modules connected to a local network via an Ethernet connection

[KDS Hardware and Software Requirements](#)

**Parent topic:** [Setting Up the Hardware](#)

## KDS Hardware and Software Requirements

Before you set up your Epson KDS, make sure that your computer and other hardware meet the following requirements:

### Operating Systems

Windows 10, Windows 8.x, Windows 7

<b>POS Systems</b>	Micros E7/3700, Squirrel Systems, Positouch (StealthTouch M5), Casio 6000, NCR Aloha, Digital Dining, NCC Reflection, Tavlo, or Talech
<b>Displays</b>	Any HD widescreen monitors that support at least 1680 × 1050 resolution with an available VGA port
<b>Bump Bars</b>	Logic Controls KB1700 USB

**Parent topic:** [About the Epson Kitchen Display System \(KDS\)](#)

## Setting Up a Direct Connect System

You can connect your KDS hardware in a single-station, direct connection configuration.

1. Unpack the printer and perform basic setup as described on the *Start Here* sheet.
2. Connect a USB or Ethernet cable to the corresponding port on the back of your TM-U220-i or TM-T88-Vi printer.
3. Connect the other end of the cable to your POS terminal.
4. Connect a VGA cable to the VGA port on the back of the printer.
5. Connect the other end of the cable to the VGA port on the monitor.
6. Connect a USB cable to one of the USB-A ports on the back of the printer.
7. Connect the other end of the cable to the USB port on the bump bar.
8. Connect a USB or Ethernet cable to a laptop or PC.
9. Connect the other end to the corresponding port on the back of the printer.

**Note:** If you connected the printer to your POS terminal with an Ethernet cable, you must use a USB cable to connect your PC to the printer.

10. After connecting the hardware, run the Epson KDS Configuration Utility on the laptop or PC to complete setup.

**Parent topic:** [Setting Up the Hardware](#)

## Setting Up a Multi-Station System

You can connect your KDS hardware in a multi-station configuration.

1. Unpack the printer and perform basic setup as described on the *Start Here* sheet.

2. Connect a USB, serial (RS232), or Ethernet cable to the corresponding port on the back of your TM-U220-i or TM-T88V-i printer.
3. Connect the other end of the cable to your POS terminal.
4. Connect an Ethernet cable to the back of the printer.
5. Connect the other end of the cable to a router or network switch.
6. Connect an Ethernet cable to the back of the KDS expansion module.
7. Connect the other end of the cable to the router or network switch.
8. Connect a USB cable to one of the USB-A ports on the back of the KDS expansion module.
9. Connect the other end of the cable to the USB port on the bump bar.
10. Connect a VGA cable to the VGA port on the back of the KDS expansion module.
11. Connect the other end of the cable to the VGA port on the monitor.
12. Repeat steps 5 through 10 for each additional display station.
13. Connect an Ethernet cable to a laptop or PC.
14. Connect the other end of the cable to the router or network switch.
15. After connecting the hardware, run the Epson KDS Configuration Utility on the laptop or PC to complete setup.

**Parent topic:** [Setting Up the Hardware](#)



---

# Running the KDS Configuration Utility

See the instructions in these sections to configure your Epson KDS.

[About the Epson KDS Configuration Utility](#)

[Getting Started with the KDS Configuration Utility](#)

[Adding and Configuring Devices](#)

[Adding and Configuring Displays](#)

[Configuring Order Tiles](#)

[Adding Menu Items and Recipes](#)

[Completing Setup](#)

## About the Epson KDS Configuration Utility

The Epson KDS Configuration Utility lets you set up, customize, and manage a kitchen display system that includes Epson devices, bump bars, and displays. You can download the Epson KDS Configuration utility from the Epson support page for your product (Epson TM-U220-i or Epson TM-T88V-i)

Before you run the configuration utility, check the following:

- If you connected the system via Ethernet, make sure the LAN connection supports broadcasting throughout the network and that port 3290 is open for both TCP and UDP packets and port 80 is open for TCP packets.
- Disable any firewalls on the PC that will run the configuration utility.
- Confirm that the PC is connected to the same network as the KDS, or is connected directly to the printer.

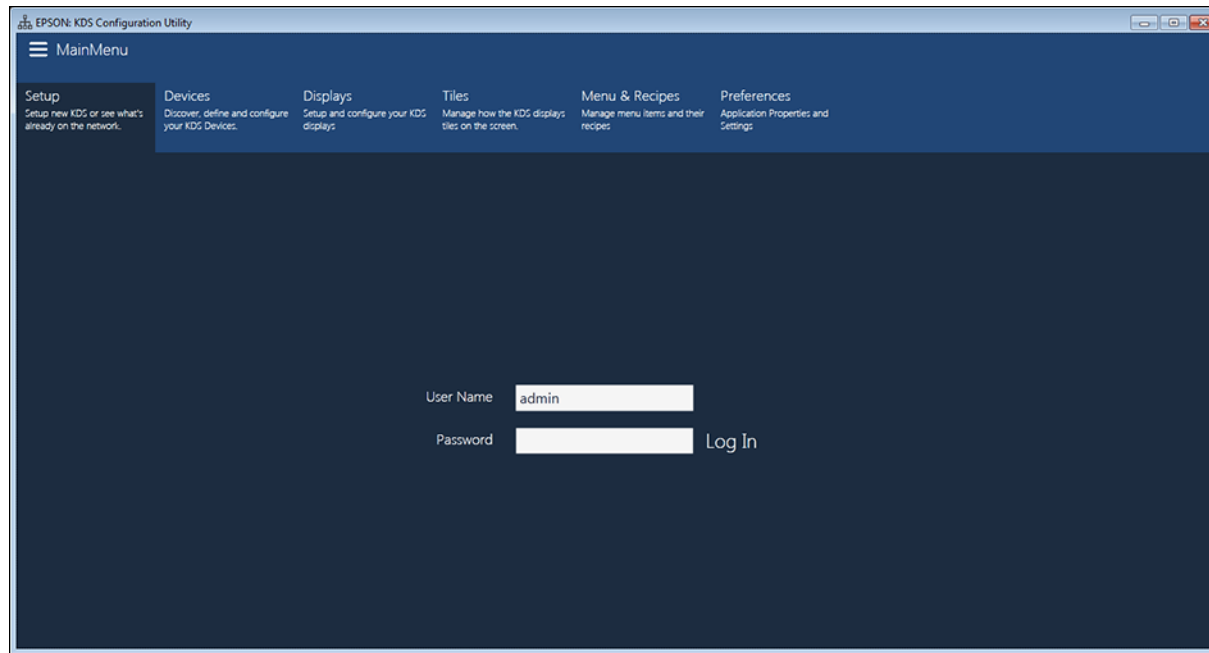
**Parent topic:** [Running the KDS Configuration Utility](#)

## Getting Started with the KDS Configuration Utility

When you run the Epson KDS Configuration Utility for the first time, you can use the setup wizard to quickly detect and configure any available KDS devices.

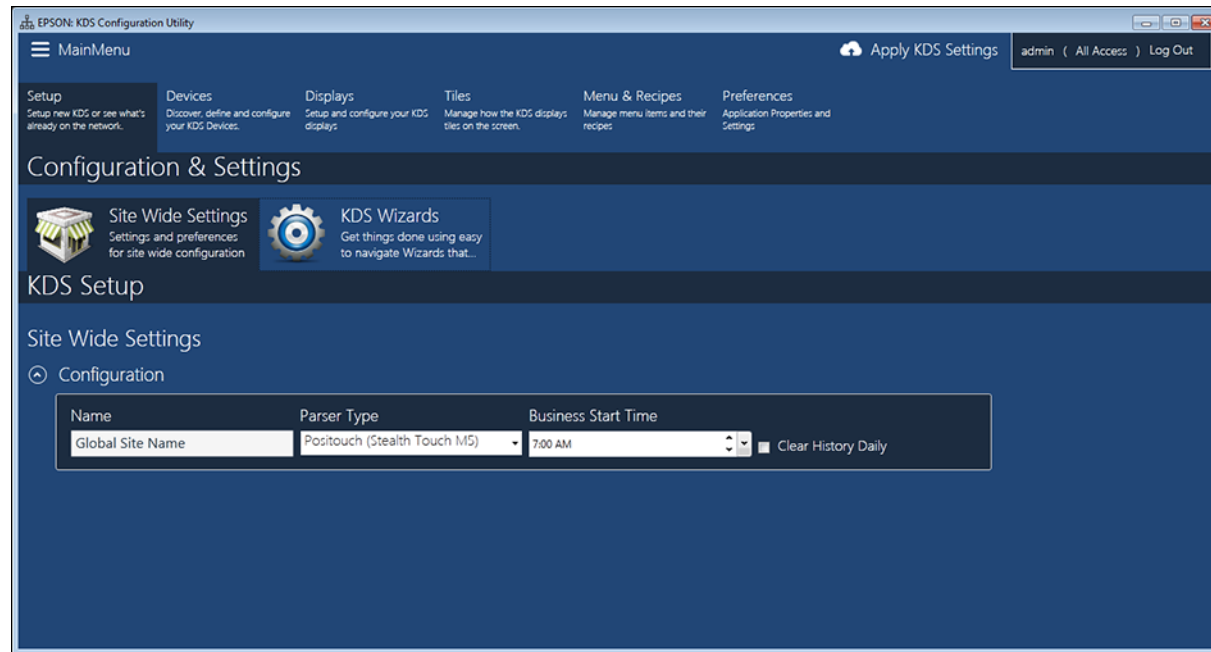
1. Download and run the KDS Configuration Utility on the computer that is connected to your KDS network or printer.

You see this screen:



2. Enter the user name and password, and click **Log In**. (The default user name is **admin** and the default password is an empty field.)

You see this screen:

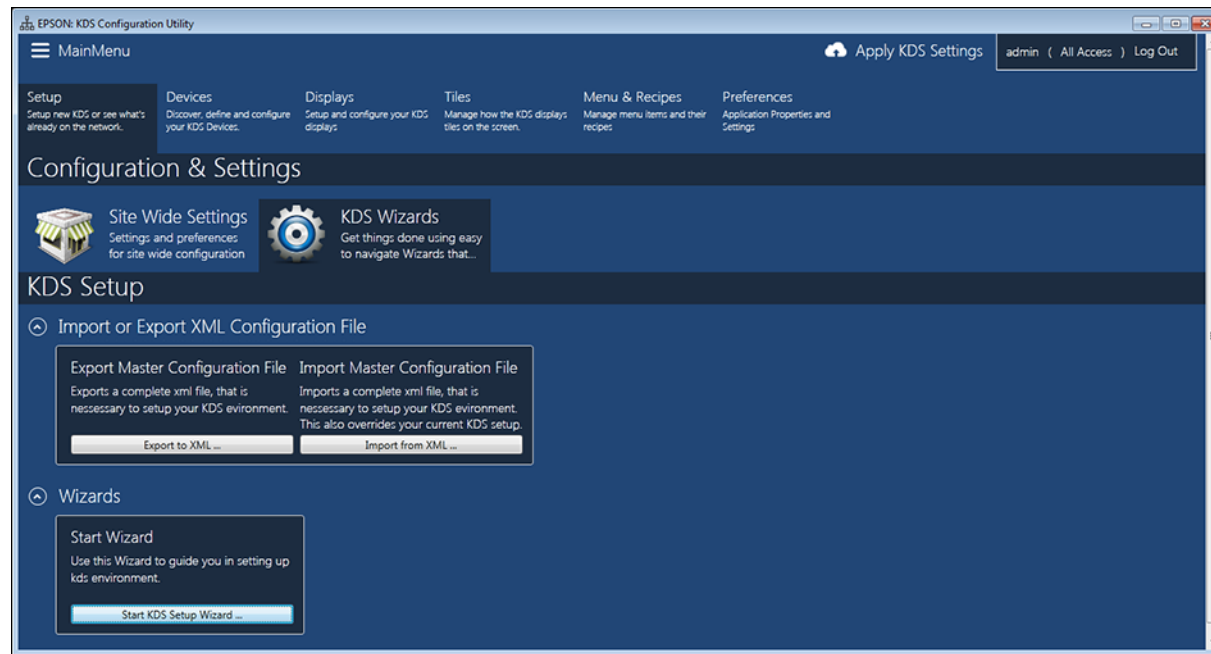


3. Enter the name of your business in the **Name** field, select the **Parser Type** setting that matches your POS terminal, and select the correct **Business Start Time** setting.

**Note:** The KDS performs maintenance during off-hours. Make sure you select the correct start time for your business to prevent interruptions during automatic system maintenance.

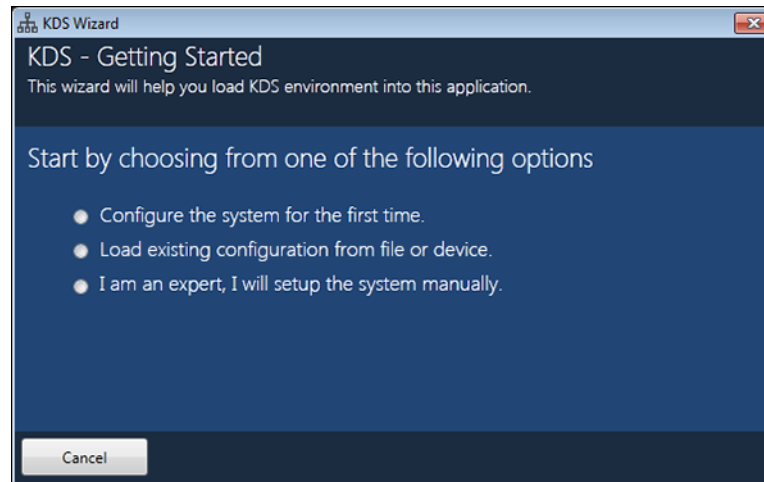
4. Select the **Clear History Daily** checkbox to erase the previous day's order history at the start of the business day.
5. Click **KDS Wizards**.

You see this screen:



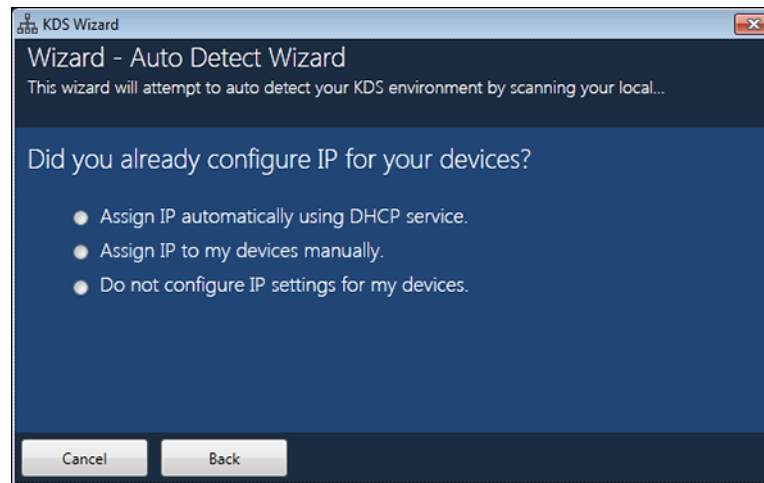
6. Click **Start KDS Setup Wizard**.

You see this screen:



7. Do one of the following:
  - To assign IP addresses to the devices on your network and set them up, select **Configure the system for the first time**, click **Next**, and continue with the next step.
  - If you previously set up the KDS and exported the settings, select **Load existing configuration from file or device**, click **Next**, and navigate to the XML configuration file. Follow the steps on the screen to load the settings.
  - To set up the KDS without using the wizard, select **I am an expert, I will setup the system manually** and click **Next** to exit the wizard and continue setting up your KDS manually.

If you chose to configure the system with the wizard, you see this screen:



8. Do one of the following:

- If you have connected the KDS devices to a router that will automatically assign dynamic IP addresses to each of them, select **Assign IP automatically using DHCP service** and click **Next**. (This is the fastest set up option, but may be less reliable than using manually-assigned static IP addresses.)
- If you want to manually define a static IP address for each connected device, select **Assign IP to my devices manually** and click **Next**. (This is more reliable than using dynamically-assigned IP addresses from the router's DHCP.)
- If you have already assigned static IP addresses to your devices, select **Do not configure IP settings for my devices** and click **Next**.

**Note:** If you see a firewall warning, select **Allow access** so the configuration utility can discover and configure your devices.

9. Follow the steps on the screen to complete setup.

Any connected devices are now configured and appear on the utility's **Devices** screen.

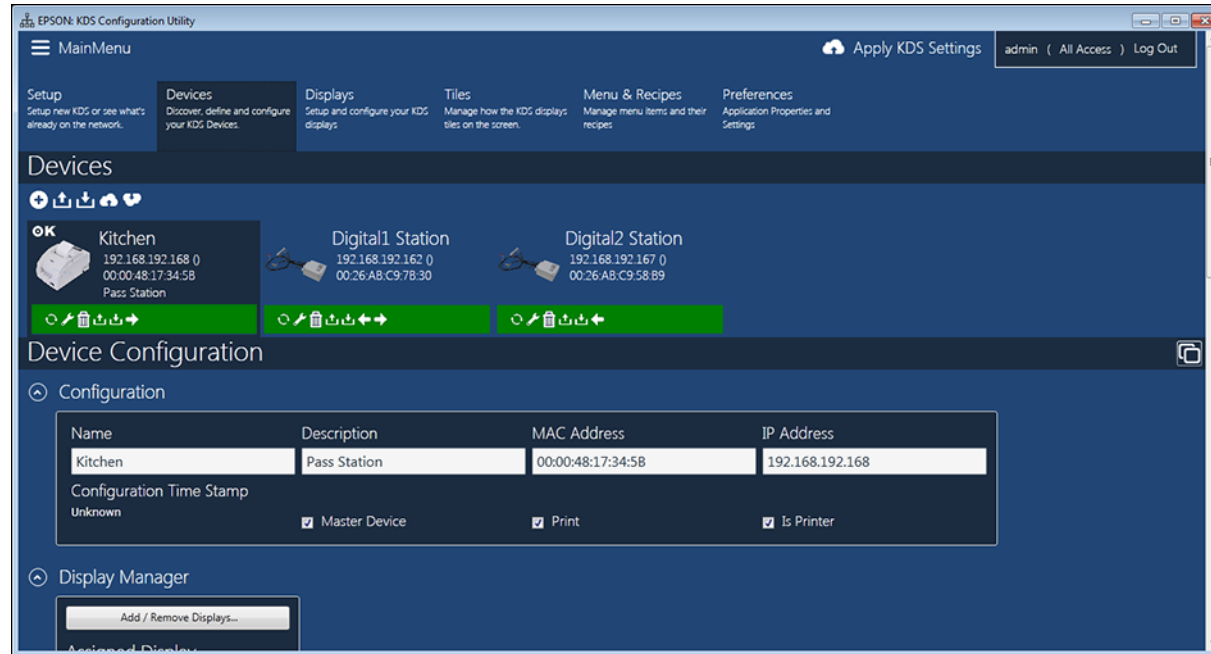
**Parent topic:** [Running the KDS Configuration Utility](#)


## Adding and Configuring Devices


You can add and remove devices, or configure existing devices, on the **Devices** tab in the KDS Configuration Utility.


1. Click the **Devices** tab at the top of the screen.

If you used the setup wizard to automatically detect and add the devices on your network, the devices appear on the screen.



**Note:** If you previously exported device settings to a configuration file, select  at the top of the tab to import the file.

2. Do one of the following:
  - To add a new device, click  and follow the steps on the discovery screen that appears. Then follow the steps below to configure it.
  - To configure an existing device, select the device and follow the steps below.

- To remove a device, click  below the device.
3. Enter a name for the device in the **Name** field and a description for it, such as its location or specific function, in the **Description** field.
  4. If the device you added is the primary device connected to your POS station, select the **Master Device** checkbox. This stores all configuration settings on the master device and transmits them to the other devices on the network when you apply the current settings. You cannot make a KDS expansion module the master device; only TM-U220-i or TM-T88V-i printers can be master devices.

**Note:** If you have only one printer on your network, the configuration utility automatically selects it as the master device. Make sure you select the device connected to your POS station as the master device, or the KDS system will not function correctly.

5. Do one of the following:
  - If the device is used as a printer and is not connected to a bump bar and display, select the **Is Printer** and **Print** checkboxes. The **Display Manager** options do not appear for printers.
  - If the device is not used as a printer, select the monitor that is connected to the device as the **Assigned Display** setting.

**Note:** You need to add and configure your monitors in the Displays tab before they will appear on the **Assigned Display** menu.

Repeat these steps as necessary to add any additional devices.

**Parent topic:** [Running the KDS Configuration Utility](#)

#### **Related tasks**

[Adding and Configuring Displays](#)

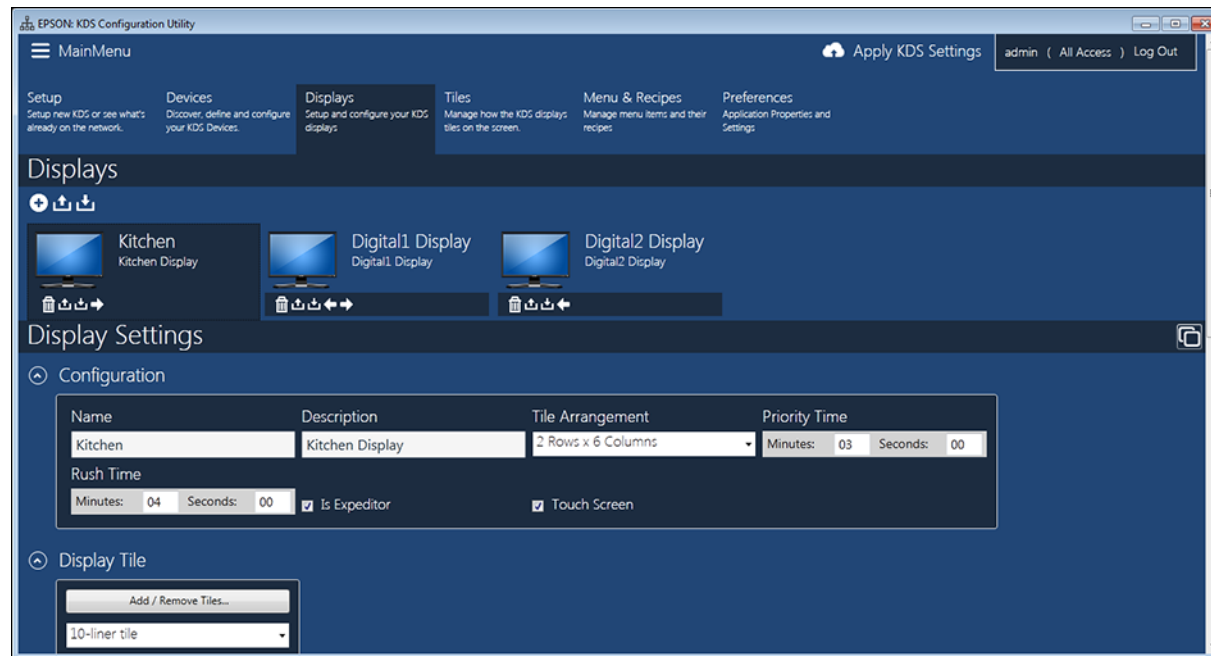
## **Adding and Configuring Displays**


You can add displays and customize their appearance on the **Displays** tab in the KDS Configuration Utility.



1. Select the **Displays** tab at the top of the screen.



You see a screen like this:



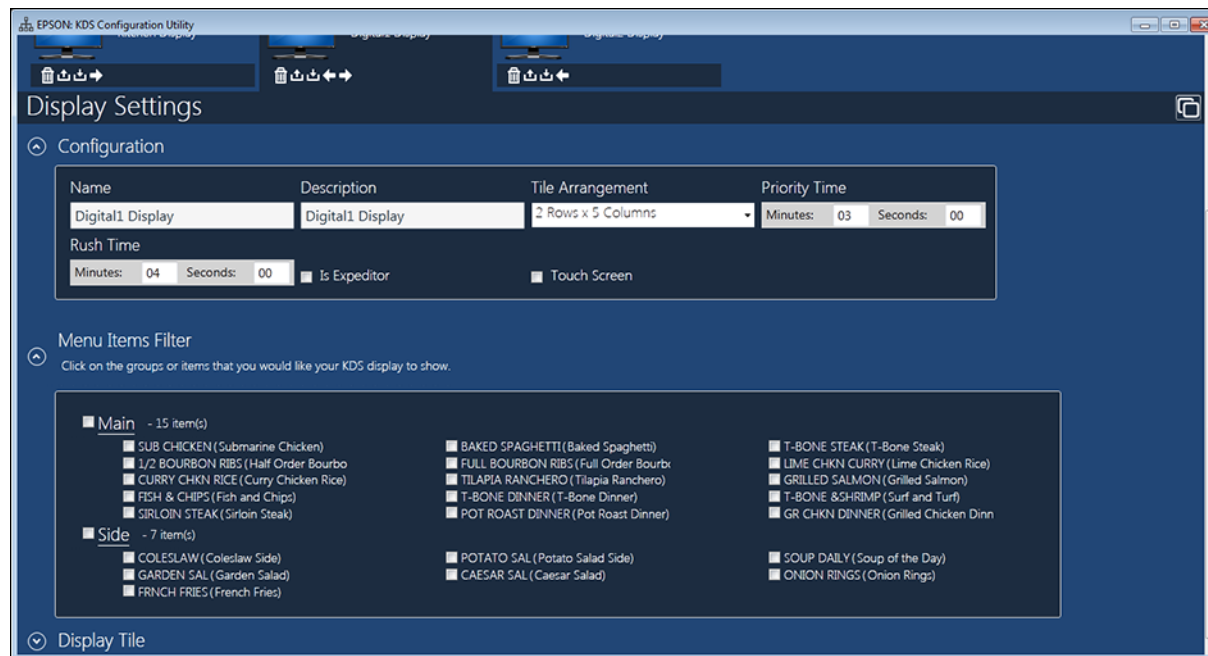
**Note:** If you previously exported display settings to a configuration file, select  at the top of the tab to import the file.

2. Do one of the following:
  - To add a new display, click  and follow the steps below to configure it.
  - To configure an existing display, select the display and follow the steps below.
  - To remove a display, click  below the display.
3. Enter a name for the display in the **Name** field and a description for it, such as its location or specific function, in the **Description** field.
4. Select how you want to order tiles arranged on the display as the **Tile Arrangement** setting.
5. To change the amount of time that an order tile is shown before it becomes a priority order, adjust the **Priority Time** setting.

6. To change the amount of time that an order tile is shown before it becomes a rush order, adjust the **Rush Time** setting.

**Note:** You can change the color of priority and rush order tiles on the **Tiles** tab.

7. Do one of the following:
  - If you will use the display to expedite orders, select the **Is Expeditor** checkbox. (The expeditor display shows every order that is submitted from the POS system and will not filter out any menu items.)
  - If you will not use the selected display to expedite orders, you can filter the menu items shown on the display. In the **Menu Items Filter** section, select the checkboxes for groups or individual menu items you want to show on the display.



**Note:** If you have not entered any menu items or groups, you will not see options in the **Menu Items Filter** section.

8. Select a format for the display as the **Display Tile** setting and adjust the format as necessary.

**Note:** You can also modify and display tile formats on the **Tiles** tab.

Repeat these steps as necessary to add or configure any additional displays.

**Parent topic:** [Running the KDS Configuration Utility](#)

### Related tasks

[Configuring Order Tiles](#)

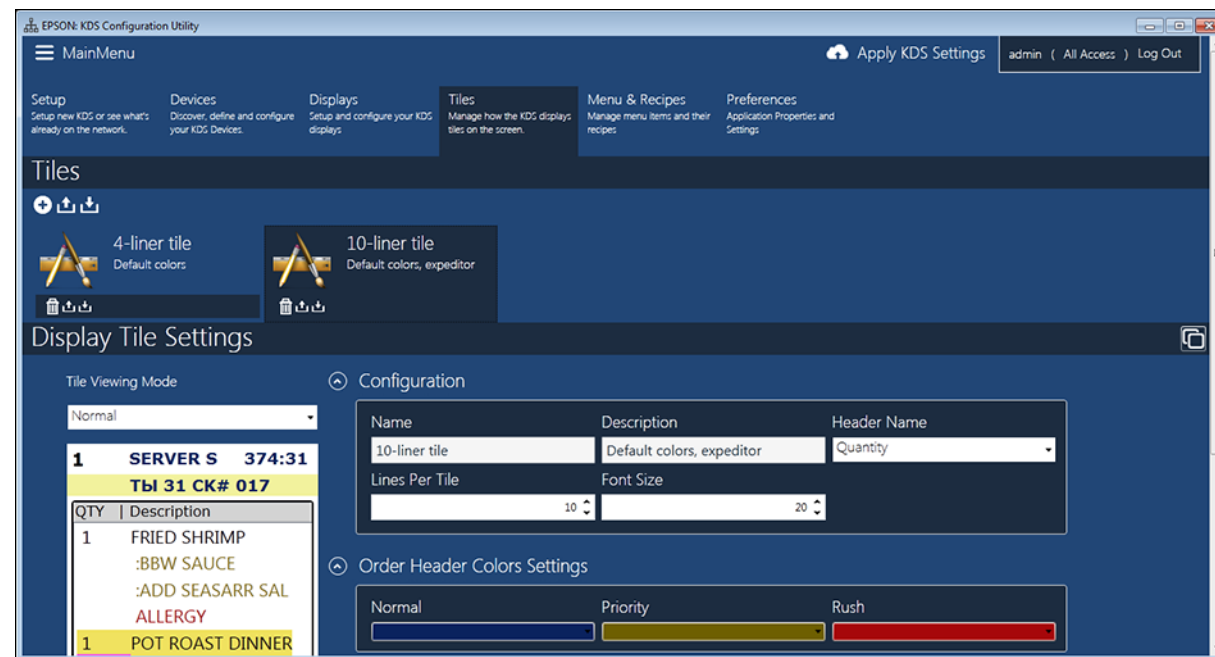
[Adding Menu Items and Recipes](#)

## Configuring Order Tiles


You can customize the appearance of the order tiles on the **Tiles** tab in the KDS Configuration Utility.

1. Click the **Tiles** tab at the top of the screen.

You see a screen like this:



2. To add a new tile format, click .

**Note:** If you previously exported tile settings to a configuration file, select  to import the file.

3. Enter a name for the tile format in the **Name** field and a description for it in the **Description** field.
4. Select the following settings for the tile format:
  - **Header Name**
  - **Lines Per Tile**
  - **Font Size**
5. Select the text color you want to use for these types of orders:
  - **Normal**
  - **Priority**
  - **Rush**

**Note:** You can adjust the amount of time an order tile displays before its status changes on the **Displays** tab.

6. Adjust any additional formatting for the tile as necessary.

**Parent topic:** [Running the KDS Configuration Utility](#)

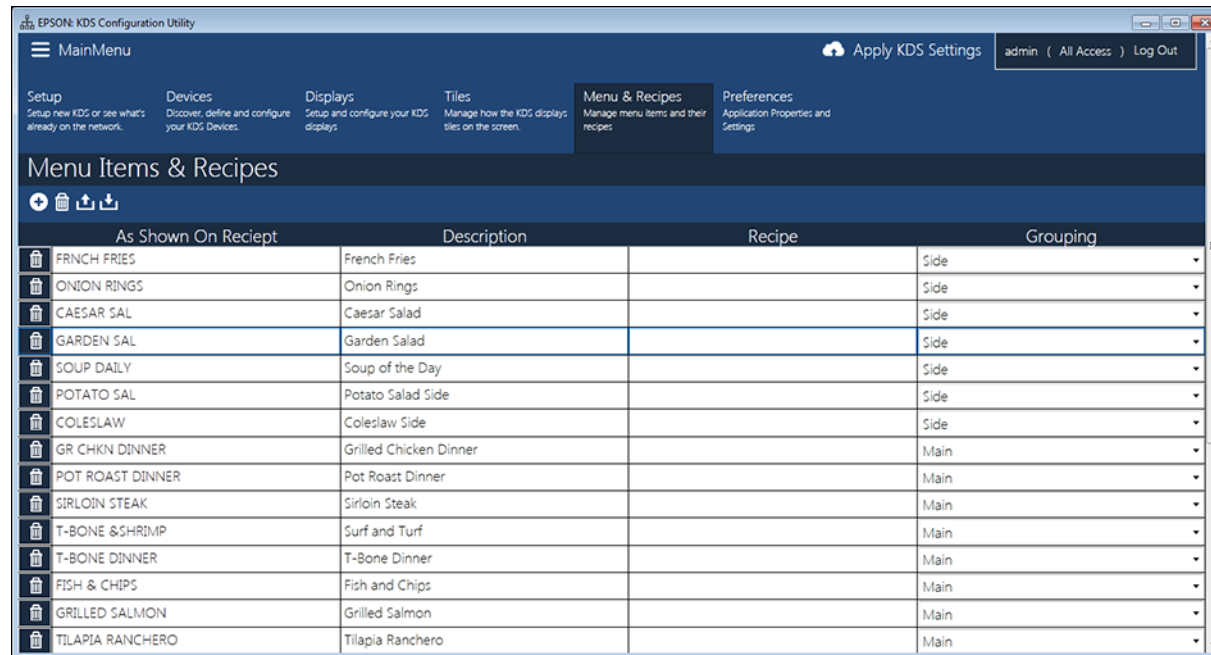
**Related tasks**

[Adding and Configuring Displays](#)


## Adding Menu Items and Recipes


You can add menu items and groups, and enter recipe information for them, on the **Menu & Recipes** tab in the KDS Configuration Utility.

1. Click the **Menu & Recipes** tab at the top of the screen.



As Shown On Receipt	Description	Recipe	Grouping
FRNCH FRIES	French Fries		Side
ONION RINGS	Onion Rings		Side
CAESAR SAL	Caesar Salad		Side
GARDEN SAL	Garden Salad		Side
SOUP DAILY	Soup of the Day		Side
POTATO SAL	Potato Salad Side		Side
COLESLAW	Coleslaw Side		Side
GR CHKN DINNER	Grilled Chicken Dinner		Main
POT ROAST DINNER	Pot Roast Dinner		Main
SIRLOIN STEAK	Sirloin Steak		Main
T-BONE & SHRIMP	Surf and Turf		Main
T-BONE DINNER	T-Bone Dinner		Main
FISH & CHIPS	Fish and Chips		Main
GRILLED SALMON	Grilled Salmon		Main
TILAPIA RANCHERO	Tilapia Ranchero		Main

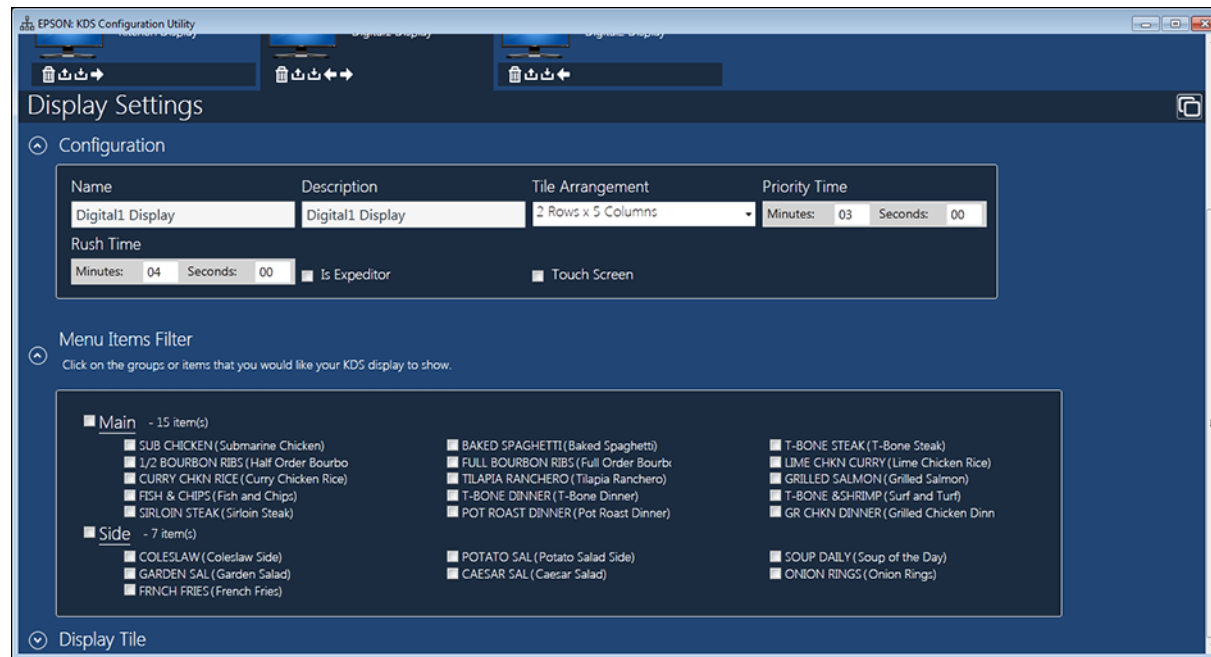
**Note:** If you previously exported menu and recipe items to a configuration file, select  to import the file.

2. To add a menu item, click .
3. Enter the name of the menu item exactly as it appears on your receipts and click **Add**.

**Note:** If the menu item name does not exactly match the name that appears on your receipts, the KDS cannot display orders correctly.

4. Repeat steps 2 and 3 to add more menu items as necessary. When you are finished, close the Add Menu Item window.
5. Enter a description for each menu item in the **Description** field and a recipe for each item in the **Recipe** field.

6. To assign menu items to a menu group that you can filter on each display, select a **Grouping** setting for each menu item.
7. When you are finished, click the **Displays** tab at the top of the screen.
8. Select one of the configured displays.
9. In the **Menu Items Filter** section, select the menu groups or menu items that you want to show on that display.



10. Repeat step 9 to add items to additional displays as necessary.

**Parent topic:** [Running the KDS Configuration Utility](#)

### Related tasks

[Adding and Configuring Displays](#)

## Completing Setup

Once you are done making changes to the KDS settings, you need to apply the settings to your master device. Click **Apply KDS Settings** at the top of the screen. The settings you selected are uploaded to the master device and shared with the other devices connected to the system.

**Parent topic:** [Running the KDS Configuration Utility](#)

---

## Trademarks

EPSON® is a registered trademark and EPSON Exceed Your Vision is a registered logomark of Seiko Epson Corporation.

General Notice: Other product names used herein are for identification purposes only and may be trademarks of their respective owners. Epson disclaims any and all rights in those marks.





---

## Copyright Notice

All rights reserved. No part of this publication may be reproduced, stored in a retrieval system, or transmitted in any form or by any means, electronic, mechanical, photocopying, recording, or otherwise, without the prior written permission of Seiko Epson Corporation. The information contained herein is designed only for use with this Epson product. Epson is not responsible for any use of this information as applied to other products.

Neither Seiko Epson Corporation nor its affiliates shall be liable to the purchaser of this product or third parties for damages, losses, costs, or expenses incurred by purchaser or third parties as a result of: accident, misuse, or abuse of this product or unauthorized modifications, repairs, or alterations to this product, or (excluding the U.S.) failure to strictly comply with Seiko Epson Corporation's operating and maintenance instructions.

Seiko Epson Corporation shall not be liable for any damages or problems arising from the use of any options or any consumable products other than those designated as Original Epson Products or Epson Approved Products by Seiko Epson Corporation.

Seiko Epson Corporation shall not be held liable for any damage resulting from electromagnetic interference that occurs from the use of any interface cables other than those designated as Epson approved Products by Seiko Epson Corporation.

This information is subject to change without notice.

[Copyright Attribution](#)

## Copyright Attribution

© 2016 Epson America, Inc.

4/16

CPD-51676

**Parent topic:** [Copyright Notice](#)