

SH 330 | SH 330 IP SH 350 | SH 350 IP



Quick Guide
Kurzanleitung
Guide rapide
Guida rapida

Instrucciones resumidas
Guida rápido
Beknopte handleiding



Detailed information | Ausführliche Informationen
Informations détaillées | Informazioni dettagliate
Informaciones detalladas | Informações detalhadas
Uitvoerige informatie



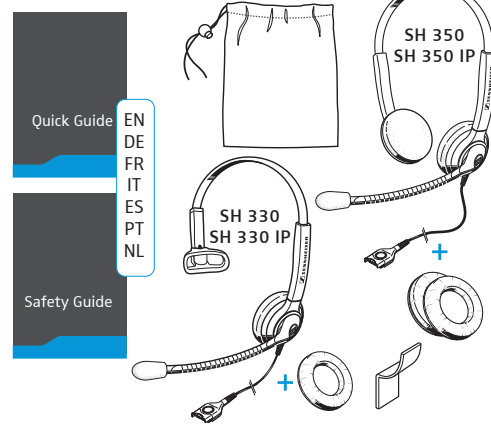
www.sennheiser.com/cc0/support

Sennheiser Communications A/S

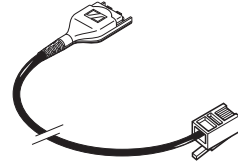
Industriparken 27, DK-2750 Ballerup, Denmark
www.sennheiser.com

Printed in China, Publ. 05/15, A01

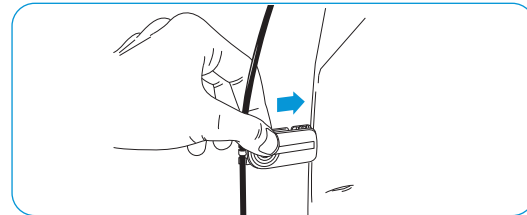
Delivery includes | Lieferumfang | Contenu | Volume di forniture
Volumen de suministro | Itens fornecidos | Leveringsomvang



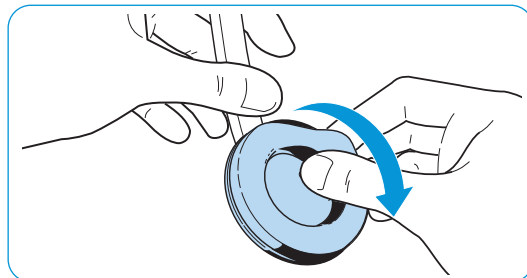
Accessories | Zubehör | Accessoires | Accessori
Accesorios | Acessórios | Toebehoren



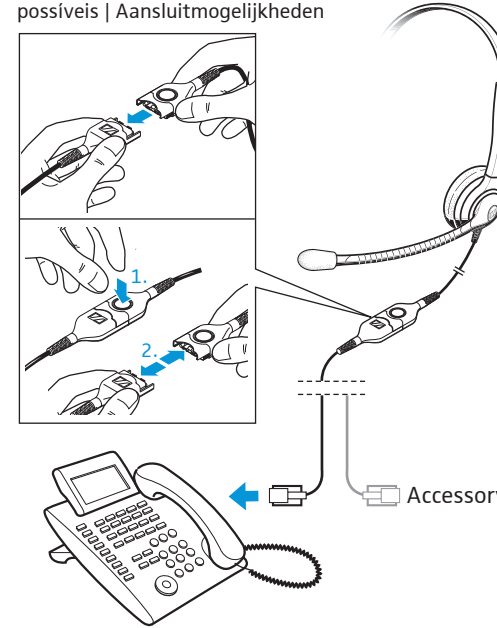
Using the cable clip | Kabel-Clip verwenden | Utiliser la pince pour câble
Utilizzo della clip per cavo | Utilizar el clip de cable
Utilizar o grampo para cabo | Kabelclip gebruiken



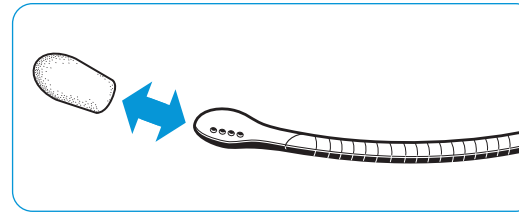
Replacing the ear pad | Ohrpolster austauschen | Remplacer le coussinet d'oreille
Sostituzione dei cuscinetti auricolari | Cambiar las almohadillas
Substituir as almofadas | Oorkussens vervangen



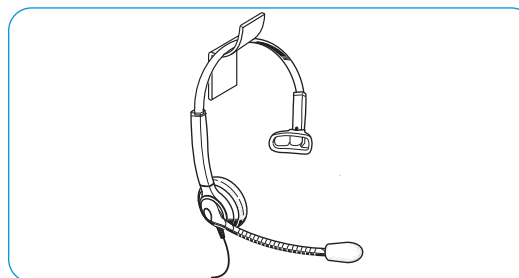
Connection possibilities | Anschlussmöglichkeiten | Possibilités de raccordement
Possibilità di collegamento | Posibilidades de conexión
Ligações possíveis | Aansluitmogelijkheden



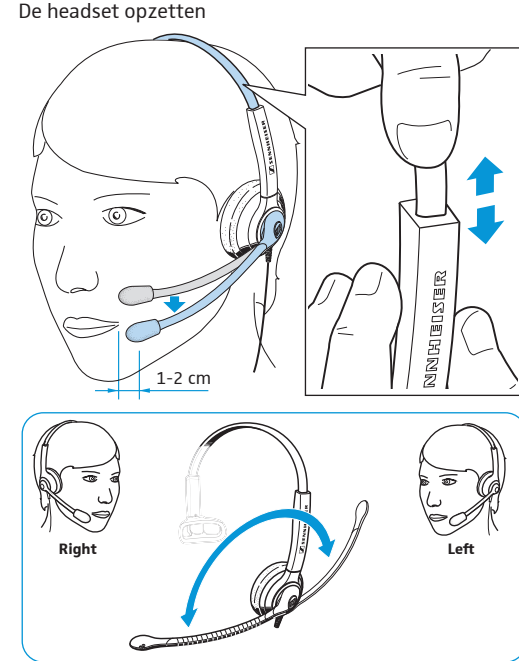
Using the popshield | Windschutz verwenden | Utiliser la bonnette anti-plosives
Utilizzo della protezione antivento | Uso de la protección contra el viento
Utilizar a protecção contra vento | Windkap gebruiken



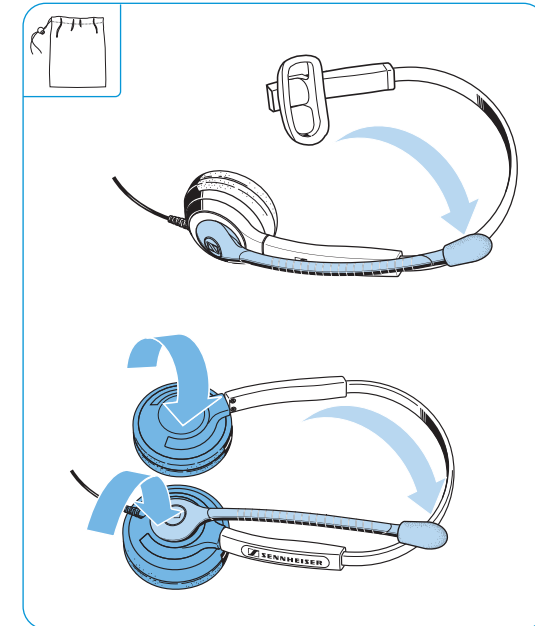
Using the headset holder | Headsethalter verwenden | Utiliser le support de casque téléphonique
Utilizzo della protezione antivento | Utilizar el soporte de los auriculares
Utilizar o suporte dos microauscultadores | Headsetbevestiging gebruiken



Wearing the headset | Headset aufsetzen | Mettre le casque-micro
Indossare l'headset | Ponerse los auriculares
Colocar o micro-auscultador | De headset opzetten



Transporting the headset | Headset transportieren | Transporter le casque-micro
Trasporto dell'headset | Transportar el headset
Transportar os micro-auscultadores | De headset transporteren



SH 330 | SH 330 IP SH 350 | SH 350 IP



Quick Guide
Snabbguide
Quick Guide
Krótka instrukcja obsługi

Hızlı Kılavuz
快速指南
クイックガイド



Udførlige | Mer informasjon | Detaljeret informasjon | Szczegółowe informacje | Ayrıntılı bilgiler | 詳細情報 | 詳細情報



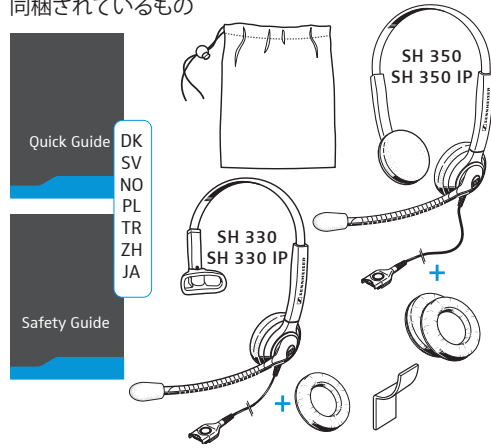
www.sennheiser.com/cco/support

Sennheiser Communications A/S

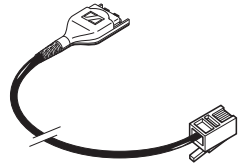
Industriparken 27, DK-2750 Ballerup, Denmark
www.sennheiser.com

Printed in China, Publ. 05/15, A01

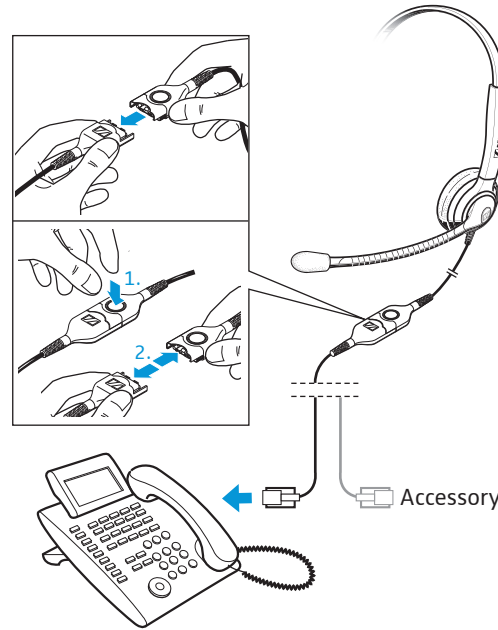
Leveringsomfang | Medföljande delar | Leveransomfang
Zakres dostawy | Teslimat Kapsamı | 供货范围 | 同梱されているもの



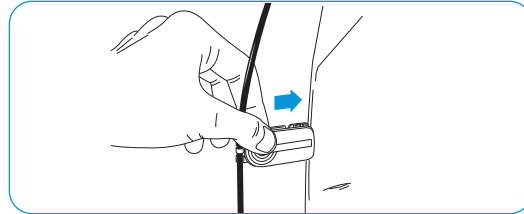
Tilbehør | Tillbehör | Tilbehør | Akcesoria | Aksesuar | 附件 | アクセサリー



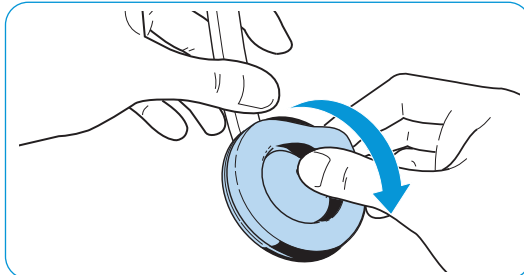
Tilslutningsmuligheder | Anslutning |
Tilkoblingsmuligheter | Możliwości podłączenia |
Bağlantı olanakları | 连接可能性 | 接続方法



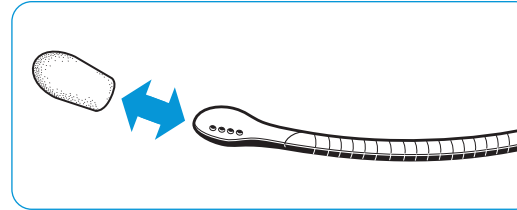
Brug af kabelklips | Använd kabelklämman |
Bruk av kabelklips | Używanie zacisku kablowego |
Kablo mandalı kullanılması | 使用耳机线夹 |
ケーブルクリップを使用する



Udskiftning af ørepolstringer | Byt öronkuddar |
Utskiftning av øreputer | Wymiana poduszek
słuchawkowych | Kulak yastığının değiştirilmesi |
更換耳墊 | イヤーパッドを交換する



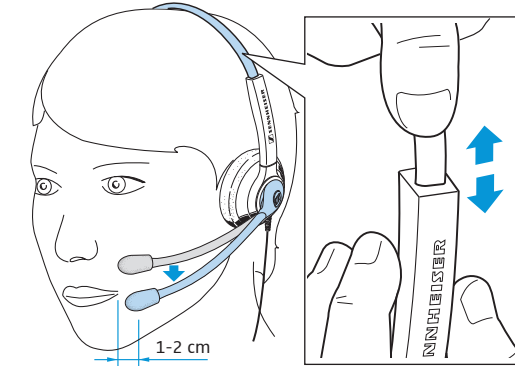
Anvendelse af vindbeskyttelse | Använd vindsydd |
Bruk av vindbeskyttelse | Przechowywanie i transport |
Rüzgar kalkanı takılması | 使用防风罩 | ポップシールドを
使用する



Anvendelse af hovedsætholder | Använd headsethållaren |
Bruk av hodesettholder | Szczegółowe informacje |
Kulaklık seti tutucusunun kullanılması | 使用耳机座 |
ヘッドセットホルダーを使用する



Brug af hovedsæt | Ta på headsetet | Sette på hodesettet
Zakładanie zestawu słuchawkowego | Kulaklığın takılması
戴上耳机 | ヘッドセットを装着する



Transport af headset | Transportera headset |
Transportere hodesettet | Transport zestawu
słuchawkowego | Kulaklık setini taşıma | 携帯耳机 |
ヘッドセット輸送時

