

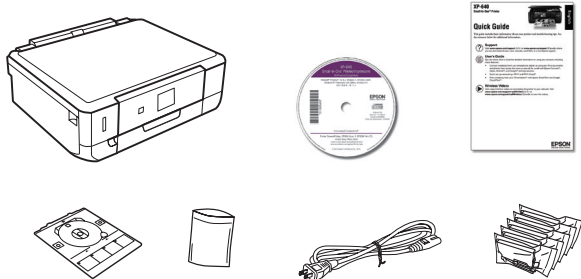
Start Here

Read these instructions before using your product.

Nota para hispanohablantes/Note for Spanish speakers:

Para obtener instrucciones de configuración en español, consulte la *Guía de instalación* en www.epson.com/support/xp640sp (requiere una conexión a Internet).

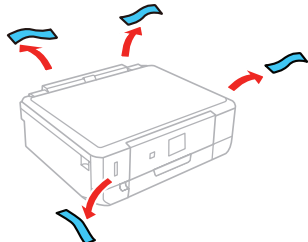
1 Unpack



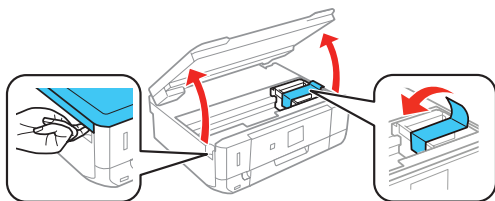
Note:

- Do not open ink cartridge packages until you are ready to install the ink. Cartridges are vacuum packed to maintain reliability.
- The CD/DVD tray is taped to the bottom of cassette 2.

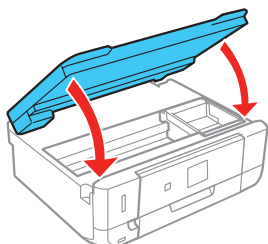
1 Remove all protective materials from the product.



2 Lift up the scanner unit and remove all protective materials.

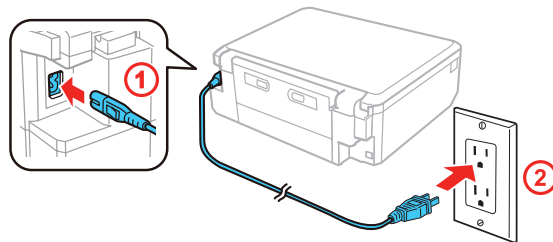


3 Lower the scanner unit.



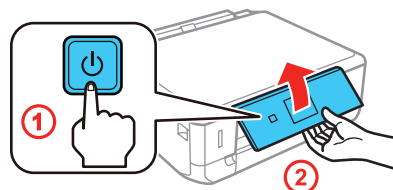
2 Turn on and configure

1 Connect the power cord to the back of the printer and to an electrical outlet.



Caution: Do not connect to your computer yet.

2 Turn on the product, then adjust the control panel.



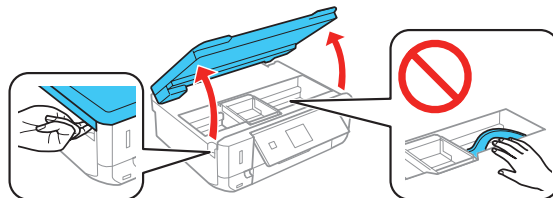
3 Select your language.

Note:

- You can change this setting later using the product's control panel. For more information, see the online *User's Guide*.
- If an error message appears, turn off the product and check that no protective material has been left inside the product.

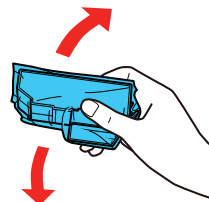
3 Install ink cartridges

1 Lift up the scanner unit.



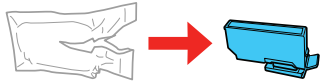
Caution: Do not touch the flat, white cable.

2 Gently shake the Black (BK) ink cartridge. Do **not** shake Photo Black (PBK) or other ink cartridges.

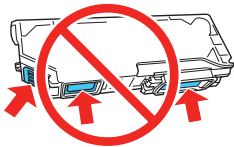


413252700

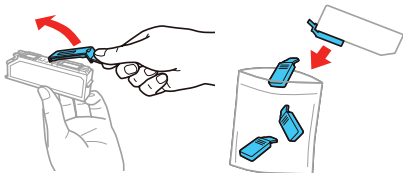
3 Unpack the ink cartridges.



Caution: Do not touch the areas shown below. Doing so may prevent normal operation and printing.

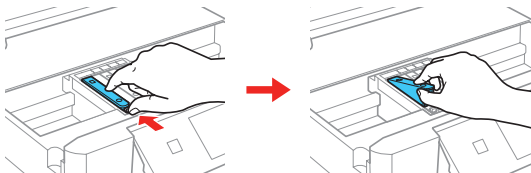


4 Remove the cap from each ink cartridge. Store the caps in the included plastic bag.

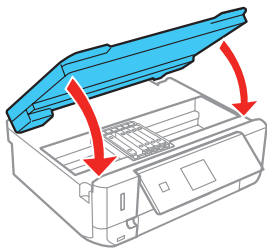


Note: Save the caps and use them to recap the ink cartridges after removing them for storage or disposal.

5 Insert the cartridges at an angle in the holder for each color. Press each cartridge down until it clicks.



6 Lower the scanner unit.



7 The printer starts charging the ink. Ink charging takes approximately 7 minutes. When you see a completion message on the printer's LCD screen, charging is complete.

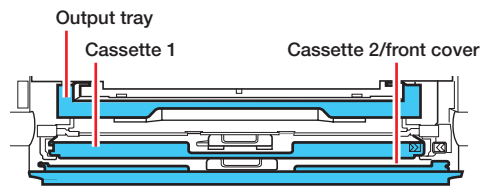
Caution: Don't turn off the printer or raise the scanner unit while the printer is charging or you'll waste ink.

Note:

- The printer is designed for use with Epson® cartridges only, not third-party cartridges or ink.
- The cartridges included with the printer are designed for printer set up and not for resale. After some ink is used for charging, the rest is available for printing.

4 Load paper

See the online *User's Guide* for information about available paper types, sizes, loading capacity, and loading CD/DVD/Blu-ray™ discs.

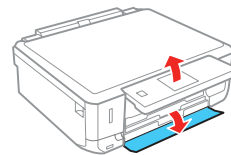


You can load the following paper sizes:

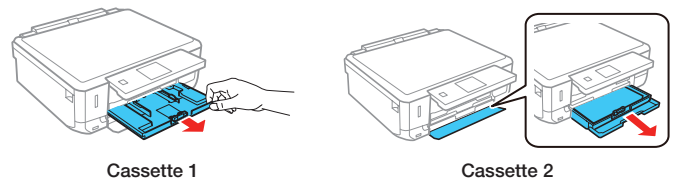
- Cassette 1: 3.5 × 5-, 4 × 6-, or 5 × 7-inch photo paper
- Cassette 2: Letter-size, A4-, legal-size, or 8 × 10-inch paper

See the instructions below for loading paper.

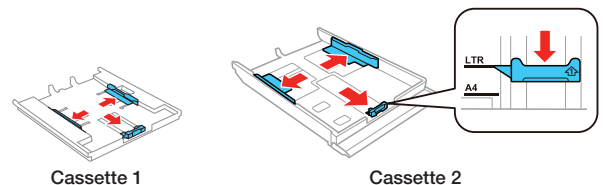
1 Lower the front cover and raise the control panel.



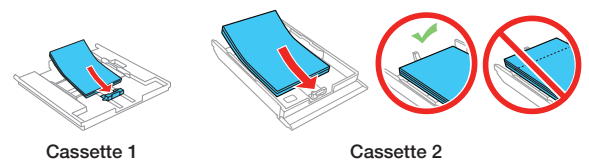
2 Pull out a paper cassette.



3 Slide the side edge guides outward and set the front edge guide to the paper size you are using.

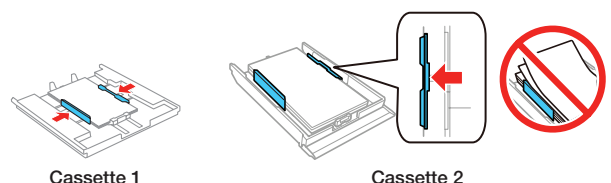


4 Insert the paper with the glossy or printable side facedown.

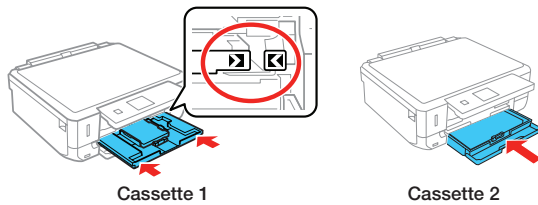


Note: Make sure the paper is loaded against the front edge guide and not sticking out from the end of the cassette.

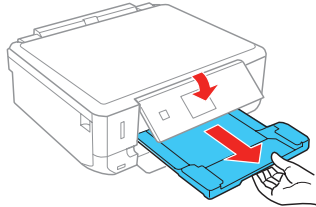
5 Slide the side edge guides against the paper, but not too tight. Make sure the paper is under the tabs on the side edge guides.



- 6 Keep the cassette flat as you insert it all the way.



- 7 Pull out the output tray until it stops and lower the control panel.

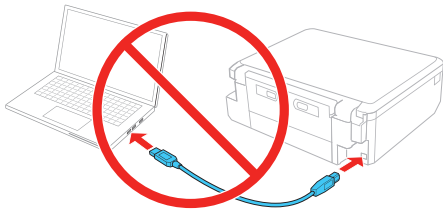


- 8 Select the paper settings on the product's control panel.

5 Install software

Note: If your computer does not have a CD/DVD drive or you are using a Mac, an Internet connection is required to obtain the product software. To print from a Chromebook™, go to www.epson.com/support/gcp (U.S.) or www.epson.ca/support/gcp (Canada) for instructions.

- 1 Make sure the product is **NOT CONNECTED** to your computer.



Windows®: If you see a Found New Hardware screen, click **Cancel** and disconnect the USB cable.

- 2 Insert the product CD or download and run your product's software package:

www.epson.com/support/xp640downloads (U.S.) or www.epson.ca/support/xp640downloads (Canada)

- 3 Follow the instructions on the screen to run the setup program.

OS X: Make sure you install Epson Software Updater to receive firmware and software updates for your product.

- 4 When you see the Select Your Connection screen, select one of the following:

- **Wireless connection**

In most cases, the software installer automatically attempts to set up your wireless connection. If setup is unsuccessful, you may need to enter your network name (SSID) and password.

- **Direct USB connection**

Make sure you have a USB cable (not included).

Mobile printing

Connect wirelessly from your smartphone, tablet, or computer. Print documents and photos from across the room or around the world:

- Print directly from your iPhone, iPad, or iPod touch. Simply connect your printer and device to the same network and tap the action icon to print.
- Use Epson Print Enabler (free from Google Play™) with Android™ devices (v4.4 or later). Then connect your printer and device to the same network and tap the menu icon to print.
- Print remotely with Epson Connect™ and Google Cloud Print™. See your online User's Guide for instructions or learn more at www.epsonconnect.com.

Any problems?

Network setup was unsuccessful.

- Make sure you select the right network name (SSID).
- Restart your router (turn it off and then on), then try to connect to it again.
- The printer can only connect to a network that supports 2.4 GHz connections. If your router offers both 2.4 GHz and 5 GHz connections, make sure the 2.4 GHz network is enabled.
- If you see a firewall alert message, click **Unblock** or **Allow** to let setup continue.
- If your network has security enabled, make sure you enter your network password (WEP key or WPA passphrase) correctly. Be sure to enter your password in the correct case.

There are lines or incorrect colors in my printouts.

Run a nozzle check to see if any of the print head nozzles are clogged. Then clean the print head, if necessary. See the online *User's Guide* for more information.

The product's screen displays an output tray message.

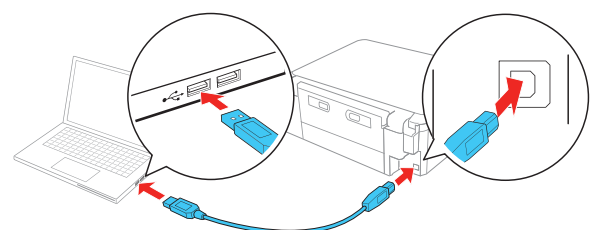
Make sure the product's output tray is fully extended.

The product's screen is dark.

Press any button to wake your product from sleep mode.

Setup is unable to find my product after connecting it with a USB cable.

Make sure the product is turned on and securely connected as shown:



Any questions?

Quick Guide

Basic information and troubleshooting.

User's Guide

Windows: Click the icon on your desktop or Apps screen to access the online *User's Guide*.

OS X: Click the icon in **Applications/Epson Software/Guide** to access the online *User's Guide*.

If you don't have a User's Guide icon, go to the Epson website, as shown below.

Technical support

www.epson.com/support (U.S.) or
www.epson.ca/support (Canada)

(562) 276-4382 (U.S.) or (905) 709-3839 (Canada), 6 AM to 8 PM, Pacific Time, Monday through Friday, and 7 AM to 4 PM, Pacific Time, Saturday. Days and hours of support are subject to change without notice. Toll or long distance charges may apply.

Recycling

Epson offers a recycling program for end of life hardware and ink cartridges. Please go to www.epson.com/recycle for information on how to return your products for proper disposal.

Need paper and ink?






Try Epson specialty papers with Claria® Ink for professional results. You can purchase them at www.epson.com/ink3 (U.S. sales) or www.epson.ca (Canadian sales). You can also purchase supplies from an Epson authorized reseller. Call 800-GO-EPSON (800-463-7766).



DESIGNED *for* EXCELLENCE™
Epson printers, ink and specialty papers.



XP-640 replacement ink cartridges

Color	Standard-capacity	High-capacity
 Photo Black	410	410XL
 Black	410	410XL
 Cyan	410	410XL
 Magenta	410	410XL
 Yellow	410	410XL



EPSON and Claria are registered trademarks and EPSON Exceed Your Vision is a registered logomark of Seiko Epson Corporation. Small-in-One is a registered trademark, and Designed for Excellence is a trademark of Epson America, Inc.

Mac, OS X, iPhone, iPad, and iPod Touch are trademarks of Apple Inc., registered in the U.S. and other countries.

Android, Google Cloud Print, Chromebook, and Google Play are trademarks of Google Inc.

General Notice: Other product names used herein are for identification purposes only and may be trademarks of their respective owners. Epson disclaims any and all rights in those marks.

This information is subject to change without notice.

© 2016 Epson America, Inc., 4/16

Printed in XXXXXX

CPD-51723