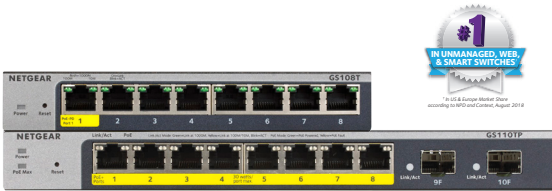


8-Port Gigabit Ethernet Smart Managed Pro Switches with Cloud Management Data Sheet

GS108Tv3, GS110TPv3



As a leading provider of network equipment for SMBs, NETGEAR understands the importance of providing great choice of port counts, PoE port counts and PoE power budgets that can adapt to the business's needs, whether in the hospitality, catering, education or retail domains. That is why NETGEAR launched these two new 8-Port Gigabit Smart Managed Pro switches, one with PoE, one without PoE. Also, NETGEAR understands the importance of easy and centralized management for business networking. Therefore, NETGEAR now expands Cloud Management capabilities to select models within its Smart Managed Pro switch line with these new versions of two of our most popular Smart Managed Pro switches.

The GS108Tv3 and GS110TPv3 8-Port Gigabit Smart Managed Pro Switches provides a great value, with configurable L2 network features like VLANs and PoE operation scheduling, allowing SMB customers to deploy PoE-based VoIP phones and IP surveillance. Advanced features such as Layer 3 static routing, IPv6 management, ACL, DiffServ QoS, LACP link aggregation and Spanning Tree will satisfy even the most advanced small business networks.

The GS110TPv3 adds full 8 port PoE support for deployment of modern PoE devices. Cautious spender organizations can now deploy PoE devices connected to a cost effective switch, with a reasonable PoE power budget of 55W. Each port can provide up to 30 watts to power up connected devices. Fanless, the GS110TPv3 supports perfectly silent desktop operation or wall mounting.

Specifically for these 2 new models, additional features were added for full flexibility: Single Sign-On registration for firmware and security updates and warranty entitlement. Remote Cloud Management capability with NETGEAR Insight. By activating the NETGEAR Insight Cloud management, the users will enable fundamental management features allowing businesses simpler configuration and deployment from anywhere using the NETGEAR Insight app from mobile devices or the Insight Cloud Portal from any device with a web browser.

Highlights

Flexible and cost-effective solution for SMB data, voice and video converged network

- Flexible and cost-effective solution for SMB data, voice and video converged network
- 8 Gigabit 10/100/1000BASE-T RJ-45 ports
- 1 PD port to receive power from another PoE switch or injector (GS108Tv3 only)
- 55W PoE budget available across 8 Gigabit PoE+ (802.3at/802.3af) ports (GS110TPv3 only)
- 2 dedicated Gigabit SFP fiber ports (GS110TPv3 only)
- Non-blocking switching with 16Gbps and 20Gbps
- Fanless switches for silent operation in noise sensitive environment
- Flexible mounting options - desktop and wall-mounting with VESA holes

Powerful Connectivity and Security Features

- Layer 3 static routing with 32 routes (IPv4) for inter-VLAN local routing
- Advanced VLAN support for better network segmentation

- L2/L3/L4 access control lists (ACLs) for granular network access control including 802.1x port authentication
- Advanced per port PoE controls for remote power management of PoE connected devices including operation scheduling (GS110TPv3 only)
- Advanced QoS (Quality of Service) for traffic prioritization including port-based, 802.1p and L2/L3/L4 DSCP-based
- Auto "denial-of-service" (DoS) prevention
- IGMP Snooping and Querier for multicast optimization
- Rate limiting and priority queuing for better bandwidth allocation
- Port mirroring for network monitoring
- Energy Efficient Ethernet (IEEE 802.3az) for maximum power savings
- Cable test to troubleshoot connection issues
- SNMP v1, v2c, v3 and RMON remote monitoring

Fully-integrated cloud-manageable devices*

Remote/Cloud Management capability with NETGEAR Insight. Instantly activate NETGEAR Insight Cloud management from the web GUI, given they subscribe to Basic (first 2 devices free), Premium or Insight Pro (Insight Pro is for resellers/MSP only)

Smart IT, not Big IT

- Easy to manage via web-Based Management GUI or Smart Control Center (Windows PC required) for multi-switch deployment
- NETGEAR Switch Discovery Tool (NSDT) to discover, register and access to the local browser interface to configure the switches
- Network Management System (NMS300), allowing all NETGEAR business products to be deployed and managed through this single interface

NETGEAR quality and reliability

- Worry-free Limited Lifetime Warranty*, online technical chat support and Next Business Day (NBD) replacement.



8-Port Gigabit Ethernet Smart Managed Pro Switches with Cloud Management Data Sheet

GS108Tv3, GS110TPv3

Hardware at a Glance

	FRONT				REAR	SIDE
Model Name	Form-Factor	10/100/1000BASE-T RJ-45 Copper Ports	1G SFP Ports	PoE/PoE+ Ports (Budget)	Power Supply	Fans
GS108Tv3	Desktop	8	-	-	External DC 12V 1.0A	Fanless
GS110TPv3	Desktop	8	2 (Dedicated)	8 PoE+ (55W)	External DC 54V 1.25A	Fanless

Software at a Glance

LAYER 2+ / LAYER 3 LITE FEATURES								
Management	IPv4/IPv6 ACL and QoS	Static Routing	IPv4/IPv6 Multicast Filtering	VLANs	Auto-VoIP, Auto-Video	IEEE (802.3az) Energy Efficient Ethernet	Convergence	Link Aggregation/ Port Trunking
<p>Web Browser-based GUI (HTTP/HTTPS);</p> <p>NETGEAR Insight mobile app or Insight Cloud Portal for local or remote management from your mobile device,</p> <p>PC, Mac, or tablet;</p> <p>PC-Based Smart Control Center Utility (SCC),</p> <p>IPv4 and IPv6 management,</p> <p>SNMP, RMON</p>	L2, L3, L4 Ingress	IPv4 32 Routes	IGMP Snooping, Querier, Fast Leave, L2 Multicast Router	Static, Dynamic, Voice, Video, 8K Max MAC (64 VLANs), Protocol based, GARP, GVRP	Yes	Yes	LLDP-MED, RADIUS, 802.1X	LACP and Manual Static LAGs (up to 8 LAGs with max 8 members)

Performance at a Glance

Model Name	Packet Buffer	CPU	ACLs	MAC Address Table ARP Table VLANs	Fabric	Latency (64-Byte Packet)	IPv4 Static Routing
GS108Tv3	512K	500MHz single core 128MB RAM 32MB SPI FLASH	100 shared (ingress)	8K Max MAC 64 VLANs	16 Gbps line-rate	1G Copper: <3.85µs	32
GS110TPv3					20 Gbps line-rate	1G Copper: < 3.69 µs; 1G Fiber: < 3.02 µs	

Ordering Information

Model Name	Americas	Europe	Asia Pacific	India	China
GS108Tv3	GS108T-300NAS	GS108T-300PES GS108T-300UKS	GS108T-300AUS- GS108T-300JPS	-	GS108T-300PRS
GS110TPv3	GS110TP-300NAS	GS110TP-300EUS	GS110TP-300AJS	GS110TP-300INS	GS110TP-300PRS

Features and Benefits

Hardware Features	Benefits
Fully-integrated Cloud-manageable Devices	Require no additional hardware (cloud keys, network portals, local servers, VPN or proxy appliances etc) to directly connect to the cloud and allow remote management. No additional hardware or software. Just switch to Insight Cloud Management mode through Web browser-based User Interface and go.
1000BASE-T Copper Ethernet and PoE+ (GS110TPv3 only) connections	Support high-density VoIP, Surveillance and Wi-Fi AP deployments, scalable for future growth. Never face the risk of running out of PoE ports or PoE power budget.
1000BASE-X SFP ports (GS110TPv3 only)	Two dedicated Gigabit SFP ports Dedicated SFP ports provide fiber uplinks without sacrificing any downlink copper Gigabit Ethernet port, and across long distances. Support for Fiber and Copper modules.
Silent Acoustics	Fanless design allows for silent operation, great for deployment in noise-sensitive environments.
Energy Efficient Ethernet (IEEE 802.3az)	Maximum power reduction for ongoing operation cost savings.
Desktop and Wallmount (VESA holes available)	Flexible deployment on desktop, wall or other location using 75mm VESA-compliant mounts.
Kensington Lock Slot	Prevent theft, removal, or tampering when used for desktop deployment.

Software Features	Benefits
Remote setup, management, and monitoring anywhere, anytime, from your mobile device, PC, Mac, or tablet	Locally or remotely setup, configure, manage, monitor or even troubleshoot your network from anywhere, anytime. Check network status, view dashboards for network health and activity, power cycle PoE ports, etc, and update firmware remotely. No need to be on-site, open up ports to your network, or VPN into it.
Auto-join and Configure (Zero-Touch Provisioning)	Additional Insight Managed devices added to the network automatically inherit settings and configuration.
Multi-site, Multi-network Single Pane-of-Glass View	View and configure multiple networks across multiple sites, all from one single app; NETGEAR Insight.
Comprehensive IPv6 Support for Management, ACLs and QoS	Build current network with future in mind. Ensure investment protection and a smooth migration to an IPv6-based network without switch replacement.
IPv4	A simple way to provide segmentation of the network with internal routing through the switch – reserving the router for external traffic routing only, making the entire network more efficient.
Robust security features: <ul style="list-style-type: none"> • 802.1x authentication (EAP) • Port-based security by locked MAC • ACL filtering to permit or deny traffic based on MAC and IP addresses 	Build a secured, converged network with all types of traffic by preventing external attacks and blocking malware while allowing secure access for authorized users.
Comprehensive QoS features: <ul style="list-style-type: none"> • Port-based or VLAN 802.1p-based prioritization • Layer 3-based (DSCP) prioritization • Port-based egress rate limiting 	Advanced controls for optimized network performance and better delivery of mission-critical traffic such as voice and video.

Software Features (con't)	Benefits
Auto-VoIP, Auto-Voice VLAN, and Auto-Video VLAN	Automatic Voice over IP prioritization (Auto-VoIP) simplifies most complex multi-vendor IP telephone deployments either based on protocols (SIP, H.323 and SCCP) or on OUI bytes (default database and user-based OUIs) in the phone source MAC address, providing the best class of service to VoIP streams (both data and signaling) over other ordinary traffic by classifying traffic, and enabling correct egress queue configuration. Similarly, Auto-Video VLAN enables IGMP snooping to minimize broadcast streams.
IGMP Snooping and MLD Snooping	Facilitate fast receiver joins and leaves for multicast streams. Save cost and improve network efficiency by ensuring multicast traffic only reaches designated receivers without the need of an extra multicast router.
Protected Ports	Ensure no exchange of unicast, broadcast, or multicast traffic between the protected ports on the switch, thereby improving the security of your converged network. This allows your sensitive phone conversations to stay private and your surveillance video clips can be forwarded to their designated storage device without leakage or alteration.
DHCP Snooping	Ensure IP address allocation integrity by only allowing DHCP messages from trusted DHCP servers and dropping malformed DHCP messages with a port or MAC address mismatch.
Dynamic VLAN Assignment (RADIUS)	IP phones and PCs can authenticate on the same port but under different VLAN assignment policies. Users are free to move around and enjoy the same level of network access regardless of their physical location on the network.
Port Trunking/Link Aggregation (LACP)	Build up bigger bandwidth to support aggregated uplink/downlink traffic or to provide redundant link(s). Aggregate up to 8 ports for 8Gbps connections.
Loop Prevention and Auto-DoS Prevention	Detect and prevent (auto port shutdown) accidental network loops and protect against DoS attacks.
PoE Timer and Scheduling (GS110TPv3 only)	Allows IT administrators to increase network security, better utilize network resources and conserve energy by scheduling or remotely controlling on/off of PoE ports.
Port Mirroring and Cable Test	Many-to-one port mirroring for better and quicker network diagnostics and troubleshooting. Cable test easily identifies bad Ethernet cables.
Dual Firmware Images	Dual firmware images for transparent firmware updates with minimum service interruption
Firmware Updates from Cloud	Direct cloud-to-device firmware updates, initiated and/or scheduled using the Insight app, all from the palm of your hand, anytime, anywhere!

Simply Activate NETGEAR Insight Cloud Management to manage your network. Anytime. Anywhere.

By activating the NETGEAR Insight Cloud management, the users will enable fundamental management features allowing businesses simpler configuration and deployment from anywhere using the NETGEAR Insight app from mobile devices or the Insight Cloud Portal from any device with a web browser.

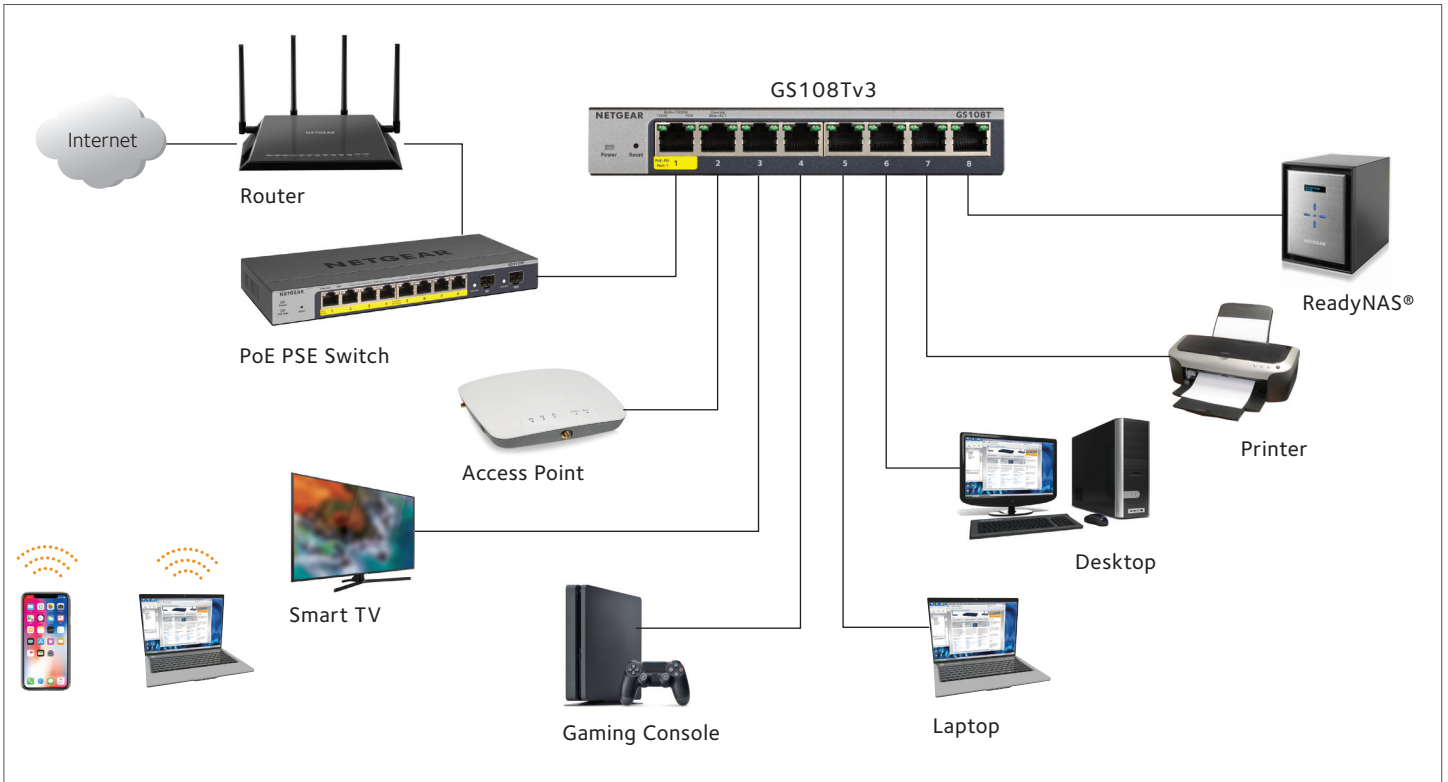
Unique advanced management features of these Insight Managed devices include:

- Remote monitoring and management with performance dashboards and troubleshooting features including remote reboot, port and PoE advanced configuration including remote enable/disable/power-cycle, PoE scheduling, and firmware updates with auto-schedule mode
- Single pane-of-glass multi-device, multi-network, and multi-site remote monitoring and notifications with the NETGEAR Insight app
- Full-fledged local or remote access for configuration, management, and monitoring on a larger display using your tablet, laptop, or desktop computer through the NETGEAR Insight Cloud Portal
- Configurable in-app and email alerts and notifications
- Auto-join and configure (zero-touch provisioning) for additional Insight Managed devices added to the network
- Centralized network configuration (policies) across Insight Managed Switches, Access Points, and ReadyNAS storage for VLANs, ACLs, QoS, LAGs, etc.
- Cloud-based network administration, monitoring, and firmware management

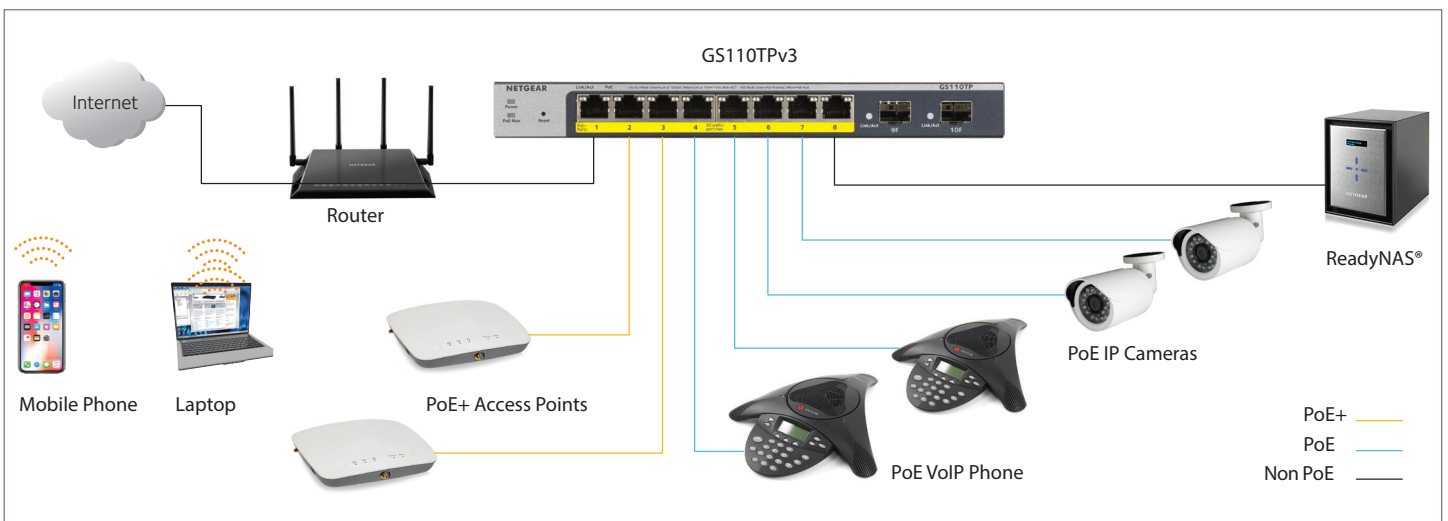
For more information about NETGEAR Insight-manageable device settings, please see at: <https://www.netgear.com/support/product/Insight.aspx>

Application Sample



Network Convergence



Power The Devices in Your Business



Technical Specifications

PRODUCT	GS108Tv3	GS110TPv3
		
Gigabit Ethernet RJ-45 Copper ports (10M/100M/1G) - 1000BASE-T	8	
PoE/PoE+ ports	N/A	8 PoE+ (55W PoE budget)
Gigabit SFP (fiber) ports (100M/1G) - 1000BASE-X		2 (dedicated)
Power Supply	External DC 12V 1.0A	External DC 54V 1.25A
Kensington Lock	Yes (rear)	
LEDs		
Front (port side) (per device)	Power	Power, PoE Max
Front (port side) (per port)	Speed/Link/Activity	Speed/Link/Activity (left), PoE Power (right)
UNIFIED NETWORK MANAGEMENT (DISCOVERY, SETUP, MONITORING, AND MANAGEMENT) THROUGH NETGEAR INSIGHT CLOUD MANAGEMENT		
Discovery, setup, monitoring and management	NETGEAR Insight mobile app on phone or tablet; Insight Cloud Portal from PC, Mac, or tablet web browser	
Remote/Cloud management	Anywhere, anytime, from the palm of your hand using Insight mobile app or from any PC, Mac, or tablet web browser using the Insight Cloud Portal	
Centralized network configuration (policies)	Centralized network configuration (policies) across Insight Managed Switches, Wireless Access Points, and Business-class ReadyNAS Storage for VLANs, ACLs, QoS, and LAGs	
Device auto-join and configure (zero-touch provisioning)	Additional Insight Managed devices added to the network automatically inherit the network configuration	
Multi-site, multi-network single pane-of-glass view	Manage multiple sites, locations, and networks in a single view using the Insight mobile app or Insight Cloud Portal	
Multi-switch, multi-port concurrent configuration for ACLs, VLANs, QoS, PoE, etc	Apply settings and policies on multiple ports across multiple switches all at the same time using the Port Config Wizard	
PERFORMANCE SPECIFICATION		
CPU	500MHz single core 128MB RAM 32MB SPI FLASH	
Packet buffer memory (Dynamically shared across only used ports)	512K	
Forwarding modes	Store-and-forward	
Bandwidth (non-blocking, full duplex)	16Gbps	20Gbps
Priority queues	8	
Priority queuing	Weighted Round Robin (WRR) and Strict Priority	
MAC Address database size (48-bit MAC addresses)	8K	
Multicast groups	256	

Technical Specifications

PRODUCT	GS108Tv3	GS110TPv3
Number of IPv4 static routes	32	
Number of VLANs	64	
Number of DHCP snooping bindings	256	
Access Control Lists (ACLs)	100 shared for MAC, IP and IPv6 ACLs	
Packet forwarding rate (64 byte packet size) (Mfps or Mpps)	11.9	14.8
1G Copper latency (µsec) (64-byte; 1518-byte; 9216-byte frames)	64-byte: 3.847 µsec 1518-byte: 4.047 µsec 9216-byte: 3.784 µsec	64-byte: 3.693 µsec 1518-byte: 3.897 µsec 9216-byte: 3.616 µsec
1G SFP Fiber latency (µsec) (64-byte; 1518-byte; 9216-byte frames)		64-byte: 3.022 µsec 1518-byte: 3.237 µsec 9216-byte: 2.959 µsec
Jumbo frame support	Up to 10K packet size	
Acoustic noise level @ 25° C (dBA) (ANSI-S10.12)	0 dBA (fanless)	
Mean Time Between Failures (MTBF) @ 25° C	2,388,657 hrs (272 yrs)	1,200,041 hrs (137 yrs)
POE CONFIGURATION		
Number of PoE (802.3af) / PoE+ (802.3at) ports	N/A	8 PoE+
Total PoE power budget (watts)	N/A	55 W
Advanced per-port PoE controls (enable/disable/power limit)	N/A	Yes
Advanced per-port PoE scheduling/timers	N/A	Yes
L2 SERVICES - VLANS		
IEEE 802.1Q VLAN Tagging	Yes	
Protocol-based VLANs	Yes	
MAC-based VLANs	Yes	
Auto-VoIP VLAN / Auto-Voice VLAN	Yes, based on OUI bytes (default database and user-based OUIs) in the phone source MAC address	
Auto-VoIP	Yes, based on protocols (SIP, H.323 and SCCP). Prioritizes traffic to a higher queue.	
Voice VLAN	Yes, based on either VLAN ID or 802.1p priority, packets are passed onto the connecting VoIP phone using LLDP-MED.	
Auto-Video VLAN	Yes	
L2 SERVICES - AVAILABILITY		
Broadcast, multicast, unknown unicast storm control	Yes	
IEEE 802.3ad - LAGs (LACP)	Yes	
IEEE 802.3x (full duplex and flow control)	Yes	
IEEE 802.1D Spanning Tree Protocol	Yes	

Technical Specifications

PRODUCT	GS108Tv3	GS110TPv3
IEEE 802.1w Rapid Spanning Tree Protocol		Yes
IEEE 802.1s Multiple Spanning Tree Protocol		Yes
L2 SERVICES - MULTICAST FILTERING		
IGMP snooping (v1, v2 and v3)		Yes
MLD snooping support (v1 and v2)		Yes
IGMP snooping queries		Yes
Block unknown multicast		Yes
Multicast groups		256
L3 SERVICES - DHCP		
DHCP client		Yes
DHCP snooping		Yes
Number of DHCP snooping bindings		256
L3 SERVICES - ROUTING		
IPv4 static routes		32
VLAN routing		Yes
Host ARP table / NDP cache (number of entries)		512 ARP
ICMP Router Discovery Protocol (IRDP)		Yes
LINK AGGREGATION		
IEEE 802.3ad - LAGs (LACP)		Yes
Manual Static LAG		Yes
# of Static or LACP LAGs # of members in each LAG		8 LAGs with max 8 members in each LAG
NETWORK MONITORING AND DISCOVERY SERVICES		
802.1ab LLDP		Yes
LLDP-MED		Yes
SNMP		Yes
RMON group 1,2,3,9		Yes
NETWORK SECURITY		
IEEE 802.1x		Yes
Guest VLAN		Yes
RADIUS-based VLAN assignment via .1x		Yes
MAC-based .1x		Yes
RADIUS accounting		Yes
Access Control Lists (ACLs)		L2 / L3 / L4
IP-based ACLs (IPv4 and IPv6)		Yes
MAC-based ACLs		Yes
TCP/UDP-based ACLs		Yes

Technical Specifications

PRODUCT	GS108Tv3	GS110TPv3
MAC lockdown		Yes
MAC lockdown by the number of MACs		Yes
Control MAC # Dynamic learned entries (per port)		4096
Control MAC # static entries (per port)		48
IEEE 802.1x RADIUS port access authentication/type		Yes
Port-based security by locked MAC addresses		Yes
Broadcast, multicast, unknown unicast storm control		Yes
DoS attacks prevention		Yes
Protected ports		Yes
QUALITY OF SERVICE (QoS)		
Port-based rate limiting		Yes, egress
Port-based QoS		Yes
Support for IPv6 fields		Yes
DiffServ QoS		Yes, ingress
IEEE 802.1p COS		Yes
Destination MAC and IP		Yes
IPv4 and v6 DSCP		Yes
IPv4 and IPv6 ToS		Yes
TCP/UDP-based		Yes
Weighted Round Robin (WRR)		Yes
Strict priority queue technology		Yes
Auto-VoIP VLAN / Auto-Voice VLAN	Yes, based on OUI bytes (default database and user-based OUIs) in the phone source MAC address	
Auto-VoIP	Yes, based on protocols (SIP, H.323 and SCCP). Prioritizes traffic to a higher queue.	
Voice VLAN	Yes, based on either VLAN ID or 802.1p priority, packets are passed onto the connecting VoIP phone using LLDP-MED.	
Auto-Video VLAN		Yes
OTHER FEATURES		
Advanced per-port PoE controls (enable/disable/power limit)	N/A	Yes
Advanced per-port PoE scheduling/timers	N/A	Yes
Loop detection & prevention	Yes (both)	
DNS Client		Yes
Option to enable/disable BPDU flooding when STP is disabled		Yes
Option to enable/disable the flooding of EAPOL when 802.1x is disabled		Yes

Technical Specifications

PRODUCT	GS108Tv3	GS110TPv3
MANAGEMENT, MONITORING & TROUBLESHOOTING		
Cloud/Remote management		Yes
Insight mobile app & Insight Cloud Portal management		Yes
uPnP Discovery		Yes
Networking monitoring		Yes
Data/performance logs		Yes
Centralized network configuration/policies (network-centric management)		Yes
Device auto-join and configure (zero-touch provisioning)		Yes
Multi-site, multi-network single pane-of-glass view		Yes
Multi-switch, multi-port concurrent configuration		Yes
Network/global password (for all Insight Managed devices on a network)	Yes (per network/subnet via NETGEAR Insight mobile app and Insight Cloud Portal)	
Password management		Yes
IP Access List		Yes
Configurable management VLAN		Yes
Admin access control via RADIUS and TACACS+		Yes
IPv6 management		Yes
SNTP client over UDP port 123		Yes
Firmware upgrade direct from Cloud (via mobile device or Insight Cloud portal)		Yes
SNMP v1/v2c		Yes
SNMP v3 with multiple IP addresses		Yes
RMON group 1,2,3,9		Yes
Port mirroring		Yes
Many-to-one port mirroring		Yes
Cable test utility		Yes
Ping and tracerout client		Yes
Local-only web browser-based management GUI		Yes
TLS Web-based access (version)		Yes (v1.2)
TFTP/HTTP firmware upload/download		Yes
Dual software (firmware) image		Yes
Memory and flash log		Yes
Syslog (Server)		Yes

Technical Specifications

PRODUCT	GS108Tv3	GS110TPv3
POWER CONSUMPTION		
Max power (worst case, all ports used, line-rate traffic) (Watts)	5.5 W	15.1 W
Max power (worst case, all ports used, full PoE, line-rate traffic) (Watts)	N/A	69.5 W
Min power (link-down standby) (Watts)	1.9 W	4.3 W
Heat Dissipation (min w/o PoE and max with full PoE) (BTU/hr)	Max: 18.66 BTU/hr Min: 6.62 BTU/hr	Max: 237.38 BTU/hr Min: 14.53 BTU/hr
Energy Efficient Ethernet (EEE) IEEE 802.3az	Yes (deactivated by default)	
Auto power down	Yes (deactivated by default)	
Fan(s) (temperature- and load-based speed control)	Fanless	Fanless
PHYSICAL SPECIFICATIONS		
Dimensions (W x D x H)	158 x 101 x 27 mm (6.2x 4.0 x 1.1 in)	236 x 101 x 27 mm (9.3 x 4.0 x 1.1 in)
Weight	0.43kg (0.94 lb)	0.61kg (1.34 lb)
Mounting options	Desktop, wallmount, VESA-standard	
ENVIRONMENTAL SPECIFICATIONS		
Operating		
Operating temperature	0° to 40°C (32° to 104°F)	
Humidity (relative)	95% maximum relative humidity (RH), non-condensing	
Altitude	10,000 ft (3,000 m) maximum	
Storage		
Storage temperature	-20° to 70°C (- 4° to 158°F)	
Humidity (relative)	95% maximum relative humidity (RH), non-condensing	
Altitude	10,000 ft (3,000 m) maximum	
WARRANTY AND SUPPORT		
Hardware Limited Warranty	Limited LIFETIME (switch) 2 years (power adapter)	
Next-Business-Day (NBD) Replacement	Limited LIFETIME	
Technical support via phone	90 days free from date of purchase*	
24x7 Online Chat Technical support	Limited LIFETIME	
ProSUPPORT OnCall 24x7 Service Packs**	Category S1: PMBOS11-10000S PMBOS31-10000S PMBOS51-10000S	Category S2: PMBOS12-10000S PMBOS32-10000S PMBOS52-10000S

Ordering Information

PACKAGE CONTENTS	GS108Tv3	GS110TPv3
Smart Managed Pro Switch	✓	✓
Power Adapter	✓	✓
Power Cord (localized to region of sale)	✓	✓
Wall mount kit and rubber footpad	✓	✓
Quick Installation Guide	✓	✓
ORDERING INFORMATION		
GS108T-300NAS	North America, Latin America	
GS108T-300PES	Europe	
GS108T-300UKS	United Kingdom	
GS108T-300JPS	Japan	
GS108T-300AUS	Asia Pacific	
GS108T-300PRS	China	
GS110TP-300NAS	North America, Latin America	
GS110TP-300EUS	Europe	
GS110TP-300AJS	Asia Pacific	
GS110TP-300INS	India	
GS110TP-300PRS	China	
OPTIONAL MODULES, SOFTWARE LICENSES AND ACCESSORIES		
AGM731F	SFP Transceiver 1000BASE-SX (Short range, multimode)	
AGM732F	SFP Transceiver 1000BASE-LX (Long range, single mode)	
AGM734-10000S	SFP Transceiver 1000BASE-T Copper RJ45 GBIC	
AXM765	SFP+ Transceiver 10GBASE-T RJ45 GBIC	

*This product comes with a limited warranty that is valid only if purchased from a NETGEAR authorized reseller, and covers unmodified hardware, fans and internal power supplies – not software or external power supplies, and requires product registration at <https://www.netgear.com/business/registration> within 90 days of purchase; see <https://www.netgear.com/about/warranty> for details. Intended for indoor use only.

** The NETGEAR OnCall 24x7 contract provides unlimited phone and email technical support for your networking product. For ProSAFE products purchased prior to 06/2014, also includes nextbusiness-day hardware replacement.

† NETGEAR #1 in US Market Share according to NPD data for Unmanaged and Web/Smart Switches, August 2018. NETGEAR #1 in Europe Market Share according to Context data for Unmanaged and Web/Smart Switches, June 2018.

NETGEAR, the NETGEAR Logo, and ProSAFE are trademarks of NETGEAR, Inc. in the United States and/or other countries. Other brand names mentioned herein are for identification purposes only and may be trademarks of their respective holder(s). Information is subject to change without notice. © 2019 NETGEAR, Inc. All rights reserved.