

Safety And Regulatory Information

Safety & Regulatory Information

The following sections contain notices for various countries:

Caution

This product is intended for use with FCC/CE certified computer equipment. Please check the equipment operating/installation manual and/or with the equipment manufacturer to verify/confirm if your equipment is suitable prior to the installation or use of the product.

Notice for USA

FCC Part 15: This equipment has been tested and found to comply with the limits for a Class B digital device, pursuant to Part 15 of the FCC Rules. These limits are designed to provide reasonable protection against harmful interference in a residential installation. This equipment generates, uses and can radiate radio frequency energy and, if not installed and used in accordance with the instructions, may cause harmful interference to radio communications. However, there is no guarantee that interference will not occur in a particular installation. If this equipment does cause harmful interference to radio or television reception, which can be determined by turning the equipment off and on, the user is encouraged to try to correct the interference by one or more of the following measures:

- Reorient or relocate the receiving antenna.
- Increase the separation between the equipment and receiver.
- Connect the equipment into an outlet on a circuit different from that to which the receiver is connected.
- Consult the dealer or an experienced radio/TV technician for help.

This device complies with part 15 of the FCC Rules. Operation is subject to the following two conditions:

1. This device may not cause harmful interference, and
2. This device must accept any interference received, including interference that may cause undesired operation.

Caution

To comply with the limits of the Class B digital device, pursuant to Part 15 of the FCC Rules, this device must be installed with computer equipment certified to comply with Class B limits. All cables used to connect to the computer and peripherals must be shielded and grounded. Operation with non-certified computers or non-shielded cables may result in interference to radio or television reception.

Modification

Any changes or modifications not expressly approved by the grantee of this device could void the user's authority to operate the device.

State of California Proposition 65:

WARNING: Handling the cord(s) on this product may expose you to lead, a chemical known to the State of California to cause cancer and birth defects or other reproductive harm. Wash your hands after handling.

Notice for Canada

This Class B digital apparatus complies with Canadian ICES-003.
Cet appareil numérique de la classe B est conforme à la norme NMB-003 du Canada.

Canadian Class B Statement

This digital device does not exceed the Class B limits for radio noise emissions from digital apparatus as set out in the interference-causing equipment standard entitled "Digital Apparatus," ICES-003 of the Department of Communications.

Cet appareil numérique respecte les limites de bruits radioélectriques applicables aux appareils numériques de Classe B prescrites dans la norme sur le matériel brouilleur: "Appareils Numériques," NMB-003 édictée par le ministre des Communications.

MODIFICATION:

Any changes or modifications not expressly approved by the grantee of this device could void the user's authority to operate the device.
Toute modification non approuvée explicitement par le fournisseur de licence de l'appareil peut entraîner l'annulation du droit de l'utilisateur à utiliser l'appareil.

July

© 2007. Creative Technology Ltd. All rights reserved. The Creative logo and Creative Inspire are either registered trademarks or trademarks of Creative Technology Ltd. in the United States and other countries. All other logos, brand or product names are trademarks or registered trademarks of their respective holders and are hereby recognised as such. All specifications are subject to change without notice. Use of this product is subject to a limited warranty. Actual contents may differ slightly from those pictured.

P/N 03MF16000000 Rev. A

EN English

Specifications
Creative Inspire T10
Power output
Satellite speaker:
5 watts RMS per channel
Signal-to-Noise Ratio:
80dB
Frequency Response:
80Hz - 20kHz

This product operates from the supplied 11.5V AC 1.6A power adapter or from an integrated power supply.

ES Español

Especificaciones
Creative Inspire T10
Salida de alimentación
Altavoz auxiliar:
5 vatios de carga eficaz por canal
Relación de señal a ruido:
80dB
Respuesta de frecuencias:
80Hz a 20kHz

Este producto funciona con el adaptador de alimentación de ca de 11.5 V y 1.6 A suministrado o con la fuente de alimentación integrada.

TR Türkçe

Özellikler
Creative Inspire T10
Ses çıkışı
Uydu hoparlör:
Kanal başına 5 W RMS
Sinyal-Gürültü Oranı:
80 dB
Frekans Yanıtı:
80 Hz ~ 20 kHz

Bu ürün 11.5V AC 1.6A güç adaptörü veya entegre güç kaynağından gelen güçle çalışır.

JP 日本語

仕様
Creative Inspire T10
出力
サテライトスピーカー:
5W RMS/チャンネル
SNR(S/N比):
80dB
周波数特性:
80Hz ~ 20kHz

この製品は付属の11.5V AC電源アダプター (1.6A)、または内蔵電源ユニットで駆動します。

FR Français

Spécifications
Creative Inspire T10
Sortie de l'alimentation
Haut-parleur satellite:
5 watts RMS par canal
Rapport signal/bruit:
80dB
Réponse en fréquence:
80Hz - 20kHz

Ce produit fonctionne avec l'adaptateur d'alimentation fourni de 11.5 V ca / 1.6 A, ou à partir d'une source d'alimentation intégrée.

BP Português do Brasil

Especificações
Creative Inspire T10
Saída de alimentação
Alto-falante:
RMS de 5 watts por canal
Relação sinal/ruído:
80dB
Resposta de frequência:
80Hz a 20kHz

Este produto funciona com um adaptador de alimentação fornecido de 11.5 V AC de 1.6A, ou com uma fonte de alimentação integrada.

CT 繁體中文

規格
Creative Inspire T10
功率輸出
環繞喇叭:
每聲道 5 瓦 RMS
訊噪比:
80dB
頻率響應:
80Hz ~ 20kHz

本產品由附帶的 11.5V AC 1.6A 變壓器或者整合電源供電。

CS 簡體中文

规格
Creative Inspire T10
功率输出
卫星音箱:
每声道 5 瓦 RMS
信噪比:
80dB
频率响应:
80Hz ~ 20kHz

本产品由所提供的 11.5V AC 1.6A 变压器中或者集成电源供电。

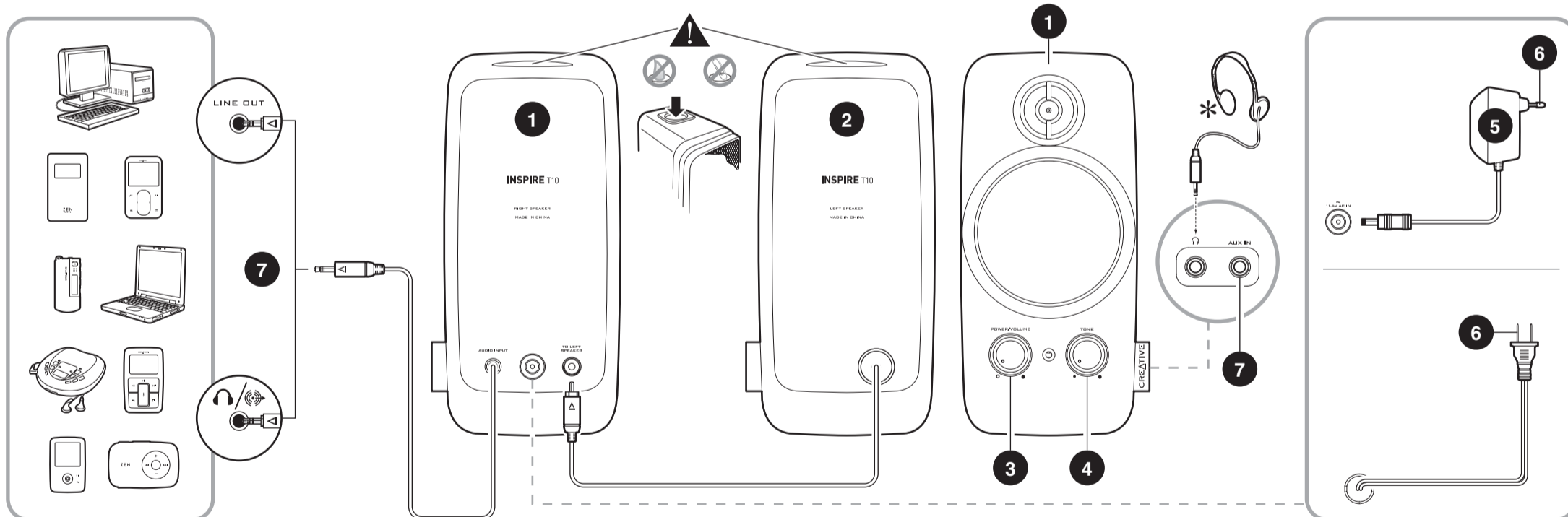
CREATIVE



- EN Quick Start Guide
- FR Démarrage Rapide
- ES Guía Rápida
- BP Introdução rápida
- TR Hızlı Başlangıç Kılavuzu
- CT 快速入門指南
- JP クイックスタートガイド
- CS 快速开始指南

INSPIRE® T10

• Connectivity Diagram • Schéma de connexion • Diagramm zur conectividad • Diagramm zur conectividade • Bağlantı Diyagramı • 連接示意圖 • 接続図 • 连接示意图



* • Optional (sold separately) • Facultatif (vendu séparément) • Opcional (se vende por separado) • Opcional (vendido separadamente) • İsteğe Bağlı (ayrı olarak satılır) • 選購配件 (另行購買) • オプション (別売) • 選購件 (另行購買)

EN English	FR Français	ES Español	BP Português do Brasil	TR Türkçe	CT 繁體中文	JP 日本語	CS 簡體中文
1 Right Speaker	Haut-parleur droit	Altavoz derecho	Alto-falante direito	Sağ Hoparlör	右聲道喇叭	サテライトスピーカー(右)	右卫星音箱
2 Left Speaker	Haut-parleur gauche	Altavoz izquierdo	Alto-falante esquerdo	Sol Hoparlör	左聲道喇叭	サテライトスピーカー(左)	左卫星音箱
3 Volume Control with Power on/off Switch	Contrôle du volume avec interrupteur on/off	Control de volumen con interruptor de encendido	Controle De Volume Com Chave De Liga/Desliga	Güç Açık/Kapalı Düşmesiyle Ses Yüksekliği Denetimi	帶電源開關的音量控制器	電源ボリュームコントロール ON/OFFスイッチ	带有电源开关的音量控制
4 Tone Control	Contrôle De La Tonalité	Control De Tono	Controle De Tom	Ton Denetimi	音調控制	トーンコントロール	音调控制
5 Power Supply Adapter (Types of adapter may vary in different countries)	Adaptateur d'alimentation (Le modèle peut varier selon le pays)	Adaptador de alimentación (los tipos de adaptadores pueden variar según el país)	Adaptador de Fonte de Alimentação (Os tipos de adaptador podem variar em diferentes países)	Güç kaynağı adaptörü (Adaptör tipinin ülkelere göre farklılık göstermesi mümkündür)	變壓器 (不同國家、變壓器類型可能不同)	電源アダプター (付属の電源アダプター以外は使用しないで下さい)	變壓器 (不同國家、變壓器類型可能不同)
6 To Wall Outlet (Disconnect when not in use for several days)	Vers la prise mural (Déconnectez le système si vous n'avez pas l'intention de l'utiliser pendant plusieurs jours)	A la toma de corriente (desconectelo cuando no se vaya a utilizar durante varios días)	Para Tomada Elétrica (Desconectar quando não estiver em uso por vários dias)	Duvar çıkışı (Birkaç gün kullanılmayacak ise bağlantıyı kesin)	至牆壁插座 (長時間不用時請拔下電源插頭)	コンセントへ接続 (数日間使用しない時はコンセントを抜いて下さい)	至牆壁插座 (長時間不用時請拔下電源插頭)
7 To Analog Audio Source	Vers la source audio analogique	Fuente de sonido analógica	Fonte de áudio analógico	Analog Ses Kaynaklarına	至類比音源	オーディオ(アナログ)出力へ接続	接至模拟音源
Object And Liquid Entry Never push any object through the openings, as this can result in a fire, electric shock or damage. Do not spill liquids on the product.	Objets et liquide dans l'appareil N'insérez jamais d'objets dans le produit au travers des ouvertures afin d'éviter tout risque d'incendie, d'électrocution ou d'endommagement. Ne renversez aucun liquide sur le produit.	Introducción de objetos y líquidos Nunca introduzca un objeto de ninguna clase a través de las ranuras del producto, ya que esto puede ocasionar incendios o cortocircuitos. No vierta líquido alguno en el producto.	Inserção De Objetos E Líquidos Jamais coloque objetos pelos orifícios, pois isso pode causar incêndio, choque elétrico ou estragos. Não derrame líquidos no produto.	Nesne ve Sıvı Girişi Asla ürün üzerinde bulunan boşluklardan içeri herhangi bir nesne sokmayın; bu yangın, elektrik çarpması ya da hasara neden olabilir. Ürünün üzerine sıvı dökmeğin.	異物及液體流入 絕對不要將任何異物從開口處放入喇叭中，否則可能會觸及到危險電壓的部份或使其元件短路。絕對不要將任何液體灑落到喇叭上。	異物および液体の侵入 製品のショートによる火災や感電をおこす危険性がある為、本製品の開口部から異物を挿入しないようにして下さい。本製品には、いかなる液体もこぼさないようにして下さい。	物体和液体进入 绝对不能把任何物体从开口处放入音箱中，否则可能会触及到含危险电压的部分或者使其部件短路。绝对不能将任何液体洒落到音箱上。