

**PFU Imaging Solutions  
Europe Limited**  
Hayes Park Central  
Hayes End Road  
Hayes Middlesex UB4 8FE  
United Kingdom

Tel: +44 (0)20 8573 4444  
Fax: +44 (0)20 8573 2643

**PFU Imaging Solutions  
Europe Limited**  
Frankfurter Ring 211  
80807 Munich  
Germany

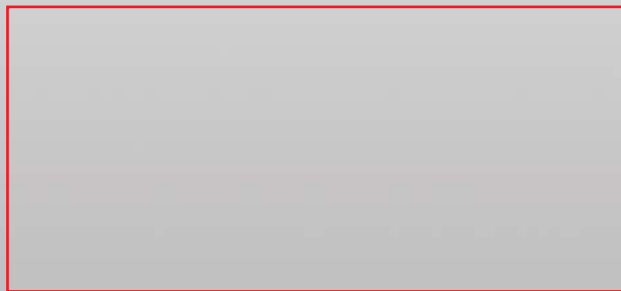
Tel: +49 (0)89 32378 0  
Fax: +49 (0)89 32378 100

**PFU Imaging Solutions  
Europe Limited**  
Via Nazario Sauro, 38  
20099 Sesto San Giovanni (MI)  
Italy

Tel: +39 0226294 1  
Fax: +39 0226294 201

<http://emea.fujitsu.com/scanners>

Scanner Quickview is also available in the following languages:



© Copyright 1993-2014. PFU Imaging Solutions Europe Limited. All rights reserved. Portal Version. R 04.14 / EN

## Scanner Quickview

EN

ScanSnap S1100	fi-7260	fi-6770
ScanSnap S1300i	fi-7180	fi-6800
ScanSnap iX500	fi-7280	fi-5950
ScanSnap N1800	fi-5530C2	fi-65F
ScanSnap SV600	fi-6670	fi-6010N
fi-6110	fi-6750S	
fi-7160		



PFU Imaging Solutions Europe Ltd (PFU) offers the most comprehensive range of document scanners available on the market today. Manufactured to the highest quality standards, Fujitsu scanners have an excellent reputation for reliability.

Whether your application involves document management, archiving, workflow or forms processing, Fujitsu most likely has the optimum scanner for the capture of your documents and data.

## FUJITSU SCANNERS CAN OFFER YOU:

- The ability to scan paper sizes from business card to A3 (extra long scanning possible up to 5.5m in length)
- Scan speeds from 8 to 270 images per minute
- Automatic document as standard
- Simplex / duplex scanning
- Colour scanning capability as well as in black / white or greyscale
- Image enhancement for poor quality mixed colour documents
- Complementary technologies across a broad range
- SCSI & USB models
- Host of software bundling

## ABOUT PFU IMAGING SOLUTIONS EUROPE LIMITED

Operating in Europe / Middle East / Africa, PFU Imaging Solutions Europe Limited is a market-leading provider of document image scanners for professional desktop, workgroup and high volume production environments. Established in the United Kingdom in 1981, PFU Imaging Solutions Europe Limited, a subsidiary of PFU Limited (Japan), has its head office in the UK with branches in Germany and Italy. For more information, please see: [www.fujitsu.com/emea/products](http://www.fujitsu.com/emea/products)

## ABOUT PFU LIMITED

PFU Limited, a subsidiary of Fujitsu Limited, is a \$1 billion global enterprise that designs, develops, manufactures, sells and maintains computer hardware, peripheral products, enterprise software and systems. PFU Limited has been engaged in document imaging scanner business for over 20 years. For more information, please visit [www.pfu.fujitsu.com/](http://www.pfu.fujitsu.com/)

## SCANSNAP DOCUMENT SCANNERS



ScanSnap S1100	4-5
ScanSnap S1300i	6-7
ScanSnap iX500	8-9
ScanSnap N1800	10-11
ScanSnap SV600	12-13

## fi Series DOCUMENT SCANNERS



fi-6110	15
fi-7180, fi-7280, fi-7160 and fi-7260	16-17
fi-5530C2	18
fi-6750S	19
fi-6670 and fi-6770	20-21
fi-6800	22-23
fi-5950	24-25

## SMALL FORMAT SCANNER

fi-65F	26
--------	----

## NETWORK SCANNING

fi-6010N	27
----------	----

## OTHER

Rack2-Filer	28
Developer and Integrator Program	29
PaperStream	30-31
Assurance Programme	32-35
Cleaning & Consumable Kits	36-37
ISV Partner Programme	38-39
Imaging Channel Program	40-41
Specifications	42-44

# ScanSnap S1100



For further information visit [www.scansnapit.com](http://www.scansnapit.com)

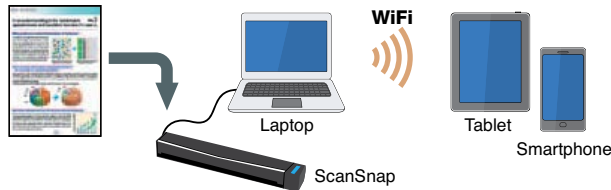
The one touch ScanSnap S1100 from Fujitsu is a fully portable document scanner offering total flexibility for scanning at the office, at home or on the move.



Compatible for both the PC and Mac the S1100 scans your documents and then allows for seamless transmission of that digitised document to a folder, to an email address, printer, Salesforce Chatter, iPad® and iPhone®, Android and Kindle™ devices, Cloud services, SharePoint, editable Microsoft® applications such as Word, Excel or PowerPoint, Adobe PDF, JPG and in the case of business cards to a database package.



## SCANS TO A GREATER RANGE OF MOBILE DEVICES



### Seamless linking

ScanSnap S1100 comes with a linking function to popular cloud services including Dropbox, Google Docs, Evernote, SugarSync and Salesforce CRM. It is now easy to seamlessly link and save your scanned image data virtually anywhere and anytime. Scan to iPad® and iPhone®, Android™ and Kindle™ devices via the downloadable ScanSnap Connect application. Upload your document fast, securely and easily and then instantly display and share.

Powered via a USB port the S1100 is one of the smallest scanners in the world offering the ability to scan A4 documents. Scan speeds of 8 pages per minute are achievable at resolutions of 300 dpi and selectable straight or u-turn paper paths can be chosen depending on the document being scanned or space constraints.



In addition to standard A4 paper the scanner can comfortably cope with plastic ID cards as well as A3 documents through the use of an optional carrier sheet.

A continuous document feeding function allows for the smooth scanning of multiple documents or the reverse of a document. For further operator enhancement the S1100 has automated functions such as automatic deskew/orientation and colour detection all designed to scan your documents quickly and precisely.





# ScanSnap S1300i



For further information visit [www.scansnapit.com](http://www.scansnapit.com)

The portable ScanSnap S1300i scanner provides users with a cross platform solution that offers productivity, efficiency and intelligence in a compact, high performance form factor. Digitise your documents easily and then effectively organize anywhere and at anytime.

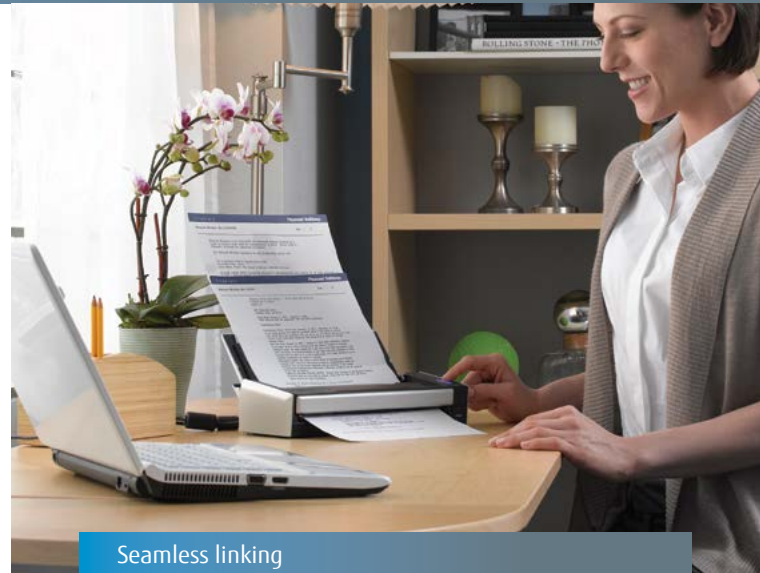


The small and powerful S1300i for PC and Mac users is a robust scanner capable of speedy double sided scanning of a range of everyday colour or black and white documentation. The 10 page automatic document feeder can accommodate mixed batches of documents ranging in thickness and in size from business card to A4.

Whether for use at home, in the office or on the move the S1300i will process documents with a single touch of a button at 12 pages per minute (24 images per minute) when mains operated or 4 pages per minute (8 images per minute) when powered directly from laptop or PC (via USB).

The S1300i has a host of intelligent features helping to minimize operator involvement before, during and after the scanning process. No need for timely preparation, interference or intervention on screen as the scanner can automatically recognise the size of each document and crop accordingly, detect and correct for skew, automatically detect colour, auto correct orientation of images regardless of feed direction and also remove any blank pages.

The S1300i ScanSnap comes bundled with ScanSnap Organizer a convenient way to view your scanned data through the use of thumbnails and then store online in simple to use filing cabinets for later retrieval. If necessary this data can automatically be converted into searchable pdf files.



## Seamless linking

ScanSnap S1300i comes with a linking function to popular cloud services including Dropbox, Google Docs, Evernote, SugarSync and Salesforce CRM. It is now easy to seamlessly link and save your scanned image data virtually anywhere and anytime. Scan to iPad® and iPhone® and Android devices via the downloadable ScanSnap Connect application. Upload your document fast, securely and easily and then instantly display and share.

Also included with the scanner is ABBYY® FineReader for ScanSnap, which allows you to scan directly to Word, Excel or PowerPoint. Bundled business card scanning software enables users to export scanned data into Excel, Outlook or other customer relationship management tools such as Salesforce. All scanning action is controlled through ScanSnap Manager which incorporates an intuitive QuickMenu function allowing users to scan directly to applications such as the ones above or to email, to print, to a folder, to Microsoft® SharePoint, to a cloud service or to a smart phone or tablet using the ScanSnap Connect App in conjunction with the ScanSnap Scan to Mobile connector.



50 Sheets



Simplex 25 ppm



Duplex 50 ipm

## DELUXE EDITION

ScanSnap iX500 is also available as a Deluxe version bundled with Rack2-Filer Smart and Magic Desktop.

Please see page 28 for further information

# ScanSnap iX500

For further information visit [www.scansnapit.com](http://www.scansnapit.com)

Fujitsu's ScanSnap iX500 scanner for both Windows and Mac platforms now offers users an enhanced scanning environment in a smart and compact design with at its core a 'GI' image processing engine. Scan speeds are an impressive 25 pages or 50 images per minute at up to 300 dpi colour or 600 dpi monochrome independent of the target device or connectivity.



Scanning directly to a tablet or mobile device is achievable via a WiFi connection with the scanning operation possible directly via the smart device, USB 3.0 is now supported.

With the ability to scan mixed batches of documents from business card up to A3 in size\* through the 50 page ADF, ScanSnap iX500 can reliably process your documents and can automatically apply image enhancement functions such as blank page deletion, auto deskew, auto orientation, auto size detection and auto colour detection to ensure minimal operator involvement and a scanned image that requires little or no manual intervention prior to exporting to application.

After scanning the ScanSnap iX500 user interface will offer a host of destinations for the scanned data such as 'Scan to' email, folder, print, mobile or cloud services such as Evernote, Dropbox, Google Docs, SugarSync amongst others.



Scan wirelessly to a PC or Mac as well as to a smart device.

Mac users can via the iX500 scan documents, convert to PDF and can then edit using the OS X embedded PDF editing functionalities. Windows users are able to edit the PDF using the bundled version of Adobe Acrobat. Editable Word, Excel and PowerPoint files can be created utilising the bundled version of ABBYY® FineReader which can be initiated via the ScanSnap QuickMenu which allows the possibility to route the image data directly into the MS office application required. CardMinder software allows for scanning business cards which can then be subsequently exported to your favourite database package or CRM system. This 'Quick Menu' of destinations can also be set up to display your favourite destinations or can recommend a destination based on what has just been scanned.

The iX500 is a complete out of the box scanning solution that simply and speedily automates the scanning process helping to improve every day working practices and increase productivity at the touch of a button.

For Windows users, a ScanSnap iX500 Deluxe model is available that includes 'Rack2-Filer Smart' for organising your documents in digital bookcases/files and Magic Desktop that allows you to organise your desktop by collecting scanned and genuine digital data in a clip board based way.

# ScanSnap N1800



Providing users with the ability to digitise everyday documents the N1800 can facilitate the processing and distribution of that data to a local network, to an email address, to a colour printer, a fax machine, to a SharePoint folder, into a cloud service or a company's business processes.



The N1800 is an attractively designed and compact scanner that can easily be placed anywhere in the office. It is easy to set up either via the intuitive touch panel or remotely via the network admin tool or from the Scanner Central Admin Server.

Advanced security features are paramount to the N1800 ensuring the safe and secure operation amongst multiple users and the protection of unauthorised access to scanned data, login authentication strictly limits what a user can do with the scanner and any scanned data can be output as a password protected pdf file. Prior to any transmission from the scanners internal memory captured data is encrypted and once processed this is deleted and for extra peace of mind any time the scanner is rebooted all data is erased.

The N1800 satisfies the digitising needs of any small networks that may use a file and/or email server, it is also more than comfortable serving more complex LDAP/LDAPS authentication based networks integrated with Microsoft® Exchange Server, SharePoint and other application hubs.



Login screen

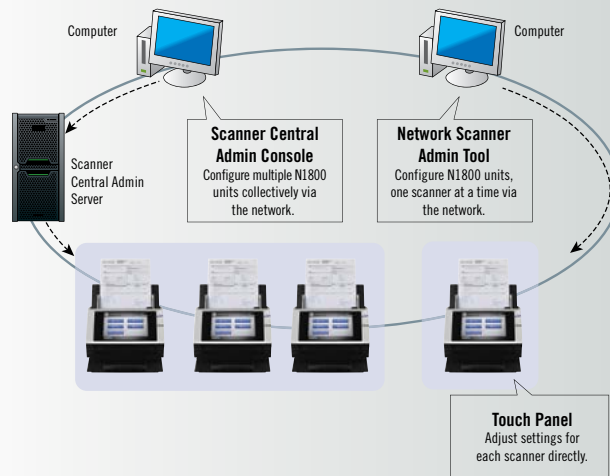
Main Menu screen

Preview screen (Scan viewer)

A range of automated functions such as page size detection, colour detection, blank page removal, automatic deskew, automatic orientation, ultrasonic multifeed detection and marker indexing ensure that not only are your documents scanned precisely and efficiently but operator involvement is kept to an absolute minimum before, during and after the scanning process.

With an ADF capacity of up to 50 sheets the N1800 can cope with a variety of mixed size and mixed thickness documents whilst delivering scanning speeds of up to 20 ppm or 40 ipm in A4 colour. It also supports A3 using a carrier sheet.

An SDK is available for the N1800 to develop applications and further expand the functions of the device to meet your business needs. The N1800 offers centralised administration and job functions allowing for configuration of many units from the one location, additionally environment settings can be adjusted if needs be one at a time and a centralised point also allows for the monitoring of scanner status.



# ScanSnap SV600



For further information visit [www.scansnapit.com](http://www.scansnapit.com)

The impressively versatile and intuitively usable SV600 scanner from Fujitsu is a unique premium overhead scanner offering the ability to instantly scan and capture a range of everyday documents as well as material that is not suited to a traditional ADF scanner such as bound material and delicate documents.



The SV600 has a movable head which rotates over the scanning area and captures any material within a predetermined setting. VI technology ensures that within a height of 3 cm and regardless of the depth of the scanning area the captured image remains consistently clear, thereby minimising any unevenness in image quality.

Anything from business cards up to A3 landscape can be scanned with a one button approach and "Multiple Document Detection" will enable you to scan a batch of receipts at the same time which will all be captured and individually cropped accordingly. A full A3 landscape scan takes just 3 seconds at an impressive resolution of 600 dpi in colour.



Bound documents can be scanned by the SV600 with the enhanced ability to continuously scan multiple pages without delay. The SV600 features page turning detection and timed mode to scan again after a set time. Further book scanning features include book image correction which automatically corrects any distortion caused by the curve of an open book and a user interaction retouch function.

The SV600 has been designed with busy work environments in mind so has a small footprint and robust design which allows it to be positioned such that when not in use it does not impose on daily activity. It seamlessly integrates with ScanSnap iX500 to allow for creating digital files from loose sheet and bound document sets.

ScanSnap SV600 is bundled with Rack2-File Smart which is a feature rich scanning and content viewing application. It incorporates an intuitive bookcase and binder interface along with an easy book creation tool which gives users a more intuitive interaction with their scanned material. The SV600 also comes bundled with Magic Desktop software.





# Fujitsu Image Scanner fi Series

## fi-6110

# *fi* Series

Image Scanner



Fujitsu's fi-6110 scanner is an easy and affordable way for users to embrace professional document management, enabling easy archiving, processing and forwarding of everyday documents.



Combining the scanner with customised software will substantially simplify everyday office routines in small and medium sized businesses, introducing a more efficient and productive way of handling documents.

Through PaperStream IP (TWAIN / ISIS), the scanner can be controlled from within virtually any document management solution. It can also be controlled through its programmable user panel allowing the ability for scanning directly to email, print or fax.

The ultra compact fi-6110 can scan at 20 ppm or 40 ipm in mono, greyscale and colour through the 50-sheet capacity ADF at resolutions of up to 300 dpi, the maximum optical resolution achievable is 600 dpi. Paper sizes from business card up to A4 or even extra long documents can be scanned with ease and even A3 scanning is supported by means of using an optionally available carrier sheet.

The fi-6110 features the impressive ultrasonic multifeed detection, blank page deletion and is the first Fujitsu entry level scanner model to feature automatic paper size detection and page rotation ensuring that the sorting of documents prior to scanning becomes a thing of the past.

Bundled with the fi-6110 scanner are PaperStream IP\* and PaperStream Capture\* which are a genuinely developed TWAIN and ISIS scanner driver and capturing software application, designed for enhanced image processing and batch scanning.

<http://emea.fujitsu.com/scanners>





80 Sheets



Simplex 80 ppm



Duplex 160 ipm



80 Sheets



Simplex 60 ppm



Duplex 120 ipm

## fi-7180, fi-7280, fi-7160 and fi-7260

The fi-7180, fi-7280, fi-7160 and fi-7260 scanners are ideally suited for speedy and seamless scanning of mixed batches of documents at the desktop.

These scanners feature an impressive array of automated hardware and software based functions designed to minimise operator involvement and process your documents from paper copy to application with intelligence, efficiency and reliability.

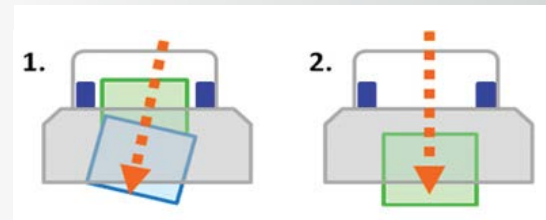
The automatic document feeder of all 4 models can accommodate up to 80 A4 sheets at a time. Colour documents can be scanned through the fi-7160 and fi-7260 at a speed of 60 ppm / 120 ipm, offering an unmatched cost-performance.

For even faster speeds the fi-7180 and fi-7280 can scan at an impressive 80 ppm / 160 ipm, ensuring solid performance and quality results. All speeds quoted are A4 Portrait at 200 or 300 dpi. Additionally the fi-7280 and fi-7260 feature a flatbed for the scanning of delicate or bound documents. A USB 3.0 interface ensures fast transmission of scanned imagery to the computer.

Status monitoring is at the fingertips of the fi-7180, fi-7280, fi-7160 and fi-7260 user and this is made instantly possible with the inclusion of an LCD that displays a host of useful information such as number of sheets scanned and general status. Furthermore a central administration function allows the possibility to monitor scanner running status, update drivers and batch scanning software applications from one central location and this can be extended to cover all scanners that may be located even across multiple locations.



Smooth, uninterrupted feeding has been developed to an unmatched level in these 4 models such that in addition to ultrasonic multifeed detection that detects double feeds even within batches of mixed thickness documents and intelligent multifeed detection where predetermined areas can be set to be ignored from triggering false alerts, the fi-7180, fi-7280, fi-7160 and fi-7260 also feature an Intelligent Sonic Paper Protection Function that works by sensing the audible noise of paper being fed and stops paper feeding when an irregular noise is encountered.



Independent pick rollers ensure a skewed document will not affect the alignment of following sheets

Bundled with the fi-7180, fi-7280, fi-7160 and fi-7260 scanners are PaperStream IP\* and PaperStream Capture\* which are a genuinely developed TWAIN and ISIS scanner driver and capturing software application, designed for enhanced image processing and batch scanning.

The fi-7180 and fi-7160 has an imprinter available as an option that enables documents to be endorsed with up to 40 characters once they have been scanned.

\* Please see page 30/31 for further information



## fi-5530C2

The fi-5530C2 is the smallest scanner in its class to offer an A3 (or A4 landscape) ADF which can hold up to 100 sheets (A4, 80 g/m<sup>2</sup>). It can process mixed batches with document sizes from A8 to A3. Its space saving design ensures that the scanner can be placed in even the smallest of desk areas and its output tray can be folded away when not in use.



The scanner displays remarkably quick scanning speeds at up to 600 dpi resolution, 35 pages per minute can be achieved at 200 dpi in portrait mode and this increases to 50 pages in landscape mode. Duplex scanning is also possible at 70 and 100 ipm respectively.

Designed with the user in mind there are simple to use scan and send buttons that allow for one touch-operation. The potential risk of costly re-scanning and checking is minimized with an in-built ultrasonic double feed detection feature that prevents two or more sheets being fed at the same time. Page rotation and automatic paper size detection is available through the driver whilst auto-cropping and auto-deskew help to enhance the captured image.

An imprinter is available as an option that enables documents to be endorsed with up to 40 characters once they have been scanned.

Bundled with the fi-5530C2 scanner are PaperStream IP\* and PaperStream Capture\* which are a genuinely developed TWAIN and ISIS scanner driver and capturing software application, designed for enhanced image processing and batch scanning.



## fi-6750S

The fi-6750S is a production level A3 scanner that combines a simplex ADF with an A3 flatbed module. It offers impressive scanning at speeds of 72 pages per minute in mono and colour (landscape, A4, at up to 300 dpi) and 55 ppm in A4 portrait at up to 300 dpi. Maximum achievable resolution is 600 dpi in colour, mono or greyscale.



The fi-6750S can effortlessly scan up to 200 sheets of varying weights, quality and sizes and can also scan paper up to 3m long. Paper size ranging from A8 to A3 can be scanned whilst differing in thickness from 31 g/m<sup>2</sup> up to 209 g/m<sup>2</sup>. A user positionable ADF that can be rotated through a full 180 degrees ensures optimisation of available space is possible as well as suiting right or left handed operators.

Operability is further enhanced through intelligent multifeed detection which whilst ensuring documents are not double fed also ensures false misfeed alerts do not occur by ignoring double layer zones of documents as may be the case when photos or sticky notes are purposely attached. Bound reports, books and fragile documents can be captured using the integrated A3 size flatbed.

The fi-6750S comes with Scanner Central Admin software which allows system administrators to manage installation, monitor scanner running status, update drivers and software from one location dramatically cutting the cost and work associated with setting up, operating and maintaining multiple scanners in an organisation.

Bundled with the fi-6750S scanner are PaperStream IP\* and PaperStream Capture\* which are a genuinely developed TWAIN and ISIS scanner driver and capturing software application, designed for enhanced image processing and batch scanning.



## fi-6670 and fi-6770

Experience exceptional performance with advanced scanning functionalities with these production scanners from Fujitsu. The fi-6670 and fi-6770 help to increase efficiencies in production environments ensuring that capturing of high volumes of documents and multi-tasking is made a whole lot easier.

Scanning at a resolution of 200 dpi (A4 Landscape), up to 180 colour or mono images per minute or 90 pages per minute can be scanned through the 200 sheet ADF which comes as standard on both models (fi-6770 also has a built in A3 size flatbed).

fi-6670 in use



At 300 dpi these speeds are 160 ipm and 80 ppm and all models will scan at up to 600 dpi. Scan mixed batches ranging in size from A8 to A3 (even Trapezoid shaped documents can be scanned in their entirety) and thickness from 31 g/m<sup>2</sup> to 209 g/m<sup>2</sup>.

The fi-6670 and fi-6770 are uniquely designed to take up minimal space whilst remaining user friendly. The fi-6670 is equipped with control panels on both sides of the unit to suit specific spaces as well as the users preferred hand use, additionally it is incredibly compact with a small footprint (641 mm wide by 432 mm deep) and input and output trays that can be adjusted to required and preferred paper guidance.



fi-6670

The ADF of the fi-6770 can be rotated a full 180 degrees to allow for right or left handed feeding as well as being positioned in the best possible setting to suit the space requirements.



fi-6770

Ultrasonic double feed detection comes as standard which whilst watching for double feeds and stopping the scanner instantly also helps eliminate false double feeds which may come about as a result of pages scanned that may have sticky notes or photos attached. Scanned images are further enhanced by a punch hole removal functionality.

fi-6770 in use



Bundled with the fi-6670 and fi-6770 scanners are PaperStream IP\* and PaperStream Capture\* which are a genuinely developed TWAIN and ISIS scanner driver and capturing software application, designed for enhanced image processing and batch scanning.

The fi-6670 can be optionally utilised with an imprinter that can print pre-defined characters on the back of scanned documents.

# fi-6800

Embracing a compact, robust and stylish design Fujitsu's production volume fi-6800 scanner is perfect for applications requiring high throughput, high speed and high quality document scanning.



The fi-6800 also offers superb capture reliability and image processing. Impressive scanning speeds help set the fi-6800 apart. At 300 dpi in A4 landscape mode 130 pages per minute can be achieved whether scanning in mono or colour. This is doubled to 260 images per minute in duplex. The ADF hopper can take a maximum 500 sheets.



fi-6800 Scanning



fi-6800 side view

Effortlessly scan mixed batches of documents ranging from A8 to A3 in size as well as differing quality and thickness (20 to 209 g/m<sup>2</sup>). Additionally the fi-6800 can scan extra long documents at up to 3,048 mm in length.

The fi-6800 has the smallest footprint in its class measuring just 460 mm wide by 430 mm deep. This combined with a foldable input tray and near silent operation make it a perfect companion sitting comfortably and discretely in any environment.

A host of functions help increase efficiencies and productivity including automated patch code or barcode triggered batch separation and file or folder naming. Also post-scan task simplifiers such as the 'Automatic Stacker Adjustment' and 'Automatic Image Quality

Checker', are highly beneficial functionalities introduced with the fi-6800. Paper feed problems are tackled before they happen with functions such as 'Paper Protection' and 'Multifeed Protection'.

Operability is further enhanced through intelligent multifeed detection which whilst ensuring documents are not double fed also ensures false misfeed alerts do not occur by ignoring double layer zones of documents as may be the case when photos or sticky notes are purposely attached.

There is a CGA board option with VRS professional that offers specific image enhancement possibilities in Kofax environments. Optional post printers are available that allow for printing of characters on front or back side of scanned documents.

The fi-6800 comes with Scanner Central Admin software which allows system administrators to manage installation, monitor scanner running status, update drivers and software from the one location dramatically cutting the cost and work associated with setting up, operating and maintaining multiple scanners in an organisation.

Bundled with the fi-6800 scanner are PaperStream IP\* and PaperStream Capture\* which are a genuinely developed TWAIN and ISIS scanner driver and capturing software application, designed for enhanced image processing and batch scanning.

## fi-5950

The fi-5950 is a production level scanner built for applications needing to scan high volumes reliably and quickly whilst minimising the pre and post processing tasks of the operator.

The fi-5950 can scan a wide range of paper qualities varying in size from A8 to A3 and thicknesses from 31 to 209 g/m<sup>2</sup> through the 500-sheet capacity hopper.

The fi-5950 provides selectable processing options through TWAIN or ISIS driver settings, which are supported by UW-SCSI and USB 2.0 interfaces. There is an optional CGA board with VRS Professional that offers specific image enhancement possibilities in Kofax environments.

The overall processing speed is additionally enhanced due to high speed CCD technology. The scanner can scan at resolutions of up to 600 dpi, and at 300 dpi scanning speeds are an impressive 135 pages per minute in simplex and 270 images per minute in duplex in both colour and mono modes (A4 landscape).

The fi-5950 comes equipped with three individual ultrasonic sensors which greatly increase the reliability of double feed detection. This, together with superior paper processing and continuous document protection, ensures that if sticky or stapled documents are included in the batch, the sensors identify an overskew incident and interrupt the scanning process to prevent possible damage to the document.



Available as optional extras are pre- and post imprinters which enable printing of up to 40 characters as an index on the front or back of scanned documents. This additional security may be required in areas such as banking and insurance and can be combined with the driver controlled virtual imprinting function (only works with TWAIN).

An active output stacking tray for neat batches helps prevent paper sheets from curling. The fi-5950 emits incredibly low noise during operation at less than 55 dB. It features easy access to all consumables and paper path areas. When not in use the hopper module can be closed ensuring minimal desktop space is used as well as keeping the interior of the scanner free from dust.

Bundled with the fi-5950 scanner are PaperStream IP\* and PaperStream Capture\* which are a genuinely developed TWAIN and ISIS scanner driver and capturing software application, designed for enhanced image processing and batch scanning.

## fi-65F

The fi-65F is a small format flatbed only scanner that offers the potential and flexibility of scanning up to A6 sized colour or black and white documents in environments where space is at a premium such as receptions of businesses, the leisure industry, financial institutions and government departments.



Scan identification cards, passports, prescriptions or driving licenses with just a press of the scan button and instantly create digitised files, a colour A6 document can be scanned in just under 2 seconds and a black and white document in just 1 second.

Scanning can be done with or without the cover further enhancing the user convenience and reducing any waiting times when utilised in customer facing applications. Documents can be automatically scanned, deskewed and cropped to their actual size in less than 2 seconds including preparation regardless of how they are put on the flatbed.

The fi-65F can be powered either by AC mains power or if access to power is limited it can be additionally powered via USB with very little impact on scanning speeds and processing times.

Bundled with the fi-65F scanner are PaperStream IP\* and PaperStream Capture\* which are a genuinely developed TWAIN and ISIS scanner driver and capturing software application, designed for enhanced image processing and batch scanning.



## fi-6010N

Fujitsu's fi-6010N is a network scanning solution offering high performance and capture reliability. Ideal for securely distributing documents in today's multi-location, global environment.



Scan mixed sized documents from A8 up to A4 size through the 50 page ADF. 25 pages per minute can be scanned in A4 portrait and at a resolution of 200 dpi. When scanning in duplex 50 images per minute are achievable.

Easy and friendly usability is characteristic of the fi-6010N, a built in US 101 type keyboard positioned underneath a large touch screen colour LCD allows for instant image viewing and for document processing to application in one single convenient area. A keyboard overlay supports multilingual usage including German, Italian, French and Spanish.

The office linking functionalities offered by the fi-6010N help to enhance process efficiencies. Once you have logged into the network, simply select the destination or application and press the scan button; whether you wish to save to a network folder for easy information sharing or for attaching to individual or group emails. User operability is additionally made easy through the 'JOB function' - this supports the remote setting up of individualised 'one touch' commands allowing for the designation of pre-assigned scanning and distribution.

A software development kit (SDK) is available to assist with the development of integrated scanning and information capture applications that allow for image display, keyboard input, indexing, system linkage, automatic field population, to name just a few. This SDK supports Microsoft® .NET Framework 3.5 for high performance application development. The fi-6010N supports secure encrypted File Transfer Protocol over SSL/TLS file transfers and encrypted data authentication with LDAPS.

Visit <http://www.fujitsu.com/emea/products/developers-and-integrators/> for further information.

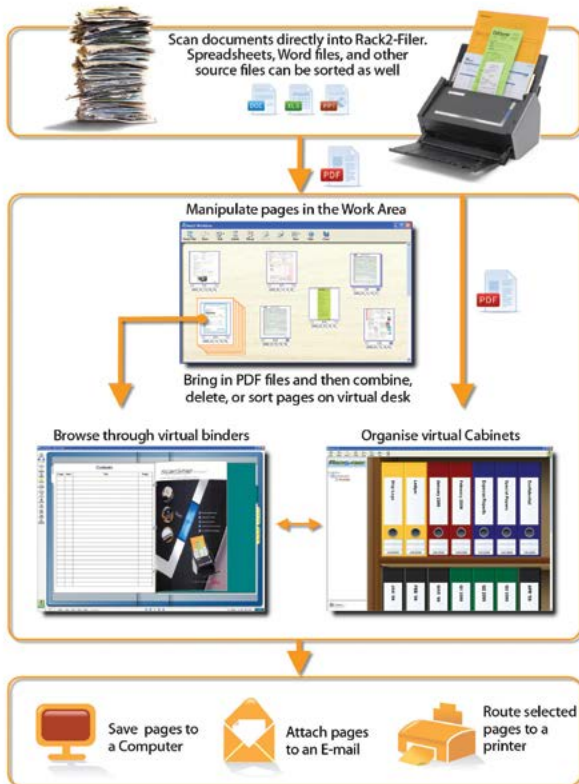
# Rack2-Filer Smart (Windows Only)

# Developer and Integrator Program

**Rack2-Filer Smart** Rack2-Filer Smart is a feature rich scanning and digital data organising application incorporating an ultra-intuitive user interface that gives users the benefits of what they love best about the paper world while harnessing the power and sophistication they depend upon within the electronic realm.

With Rack2-Filer Smart and your Fujitsu ScanSnap scanner, you can easily scan, edit, distribute, access anywhere and organise all of your digitised documents (not only limited to newly created files).

Rack2-Filer Smart is bundled with the S1100 Deluxe, S1300i Deluxe, the iX500 Deluxe and the SV600 as well as it can be purchased separately.

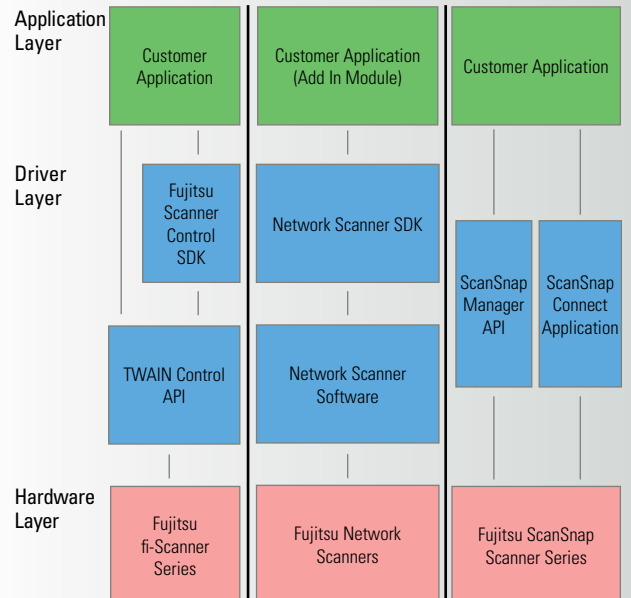


Recognising the need for sharing best practice, knowledge and experience, PFU Imaging Solutions Europe Limited have introduced the Developer & Integrator Program which involves us working with your development team to create a tailored document scanning solution for your customers.

The Developer and Integrator program allows us to work closer with you and your applications offering you and your customers a better all round service.

We can explore and integrate PFU technologies including Network scanner SDK, Scanner control SDK (TWAIN), ScanSnap integration, TWAIN API control and Scanner Central Administration software offering prototype development and scanner interface support.

Please contact us with any questions or opportunities at [sdk@fdg.fujitsu.com](mailto:sdk@fdg.fujitsu.com)



## *PaperStream*

Fujitsu developed best in class scanner driver  
and image capturing / processing software



### **PaperStream IP – high quality image enhancement**

PaperStream IP is the new scanner driver for the fi-6110, fi-7180, fi-7280, fi-7160, fi-7260, fi-5530C2, fi-6750S, fi-6670, fi-6770, fi-6800, fi-5950 and fi-65F scanners. In addition to being fully compliant with the industry standard TWAIN and ISIS interface, PaperStream IP incorporates as standard, highly sophisticated image processing that automatically applies features such as noise removal, background pattern removal and character augmentation to produce exceptionally clear, high quality images that are suitable for direct import into the users' workflow.

PaperStream IP has an intuitive, easy to use interface that can be switched between Administrator or User mode to simplify the scanning process and reduce user error.

Additionally PaperStream IP also introduces a new Assisted Scanning mode, which allows the user to visually select the best quality image from a range of images of the page, rather than needing to manually fine tune the scanning parameters one by one.



### **PaperStream Capture – enhanced capture**

PaperStream Capture is an easy to use capture tool which allows users to easily create scanning routines which encapsulate all of the settings and configuration required to control the scanning process from scan to the release of the image to the users' or companies' defined workflow.

Once created, profiles can be run by a single click and the most frequently used profiles can even be linked to the scanners front panel scan button to streamline the whole capture process.



# Assurance Program



All Services Operate Monday - Friday, 09:00 am – 17:00 pm local time.

## WHAT IS THE ASSURANCE PROGRAMME?

The Assurance Program from Fujitsu offers a wide range of Service Plans to enhance the Product Warranty included with Fujitsu document scanners. As the manufacturers official program, you can be confident in the investment made by Fujitsu to ensure the highest standards of support you would expect from one of the leading global IT companies.

Certain limitations may apply depending on geographic location, please visit <http://emea.fujitsu.com/assurance> for further information.

## PROTECT YOUR INVESTMENT

With the growing demand for document imaging solutions and an increase in business dependency on scanning and managing documents electronically, the Assurance Program provides the peace of mind and business continuity that customers demand, allowing you to focus on your business while we focus on your scanner.

All services can be purchased from your scanner supplier using specific Fujitsu service part numbers.

	Product Warranty	Bronze	Silver	Gold	Platinum
<b>Personal Scanners</b>					
ScanSnap S1100 and ScanSnap S1300i					
Telephone Hotline Support	–		•		
Online Support Ticketing System	•		•		
Remote Desktop Support	–		•		
Advance Exchange Product Replacement within:	7 Days		1-2 Days		
Spare Parts, Labour & Shipping Included (Excluding Consumables)	•		•		
Accidental Damage Cover	–		•		
Available for:	2 Years		4 Years		
Renewals Available For:	–		1 Year		
ScanSnap iX500 and ScanSnap SV600					
Telephone Hotline Support	•			iX500 and SV600	iX500 only
Online Support Ticketing System	•			•	•
Remote Desktop Support	•			•	•
Advance Exchange Product Replacement within:	1-2 Days			1-2 Days	1-2 Days
Customers Original Unit Returned After Repair (Exchange PLUS)	•			–	•
Spare Parts, Labour & Shipping Included (Excluding Consumables)	•			•	•
Accidental Damage Cover	•			•	•
ScanSnap iX500 available for:	2 Years			5 Years	5 Years
ScanSnap SV600 available for:	1 Year			3 Years	N/A
<b>Specialist Products</b>					
fi-65F					
Telephone Hotline Support	•	•			
Online Support Ticketing System	•	•			
Advance Exchange Product Replacement within:	1-2 Years	1-2 Years			
Spare Parts, Labour & Shipping Included	•	•			
Available for (in years):	1 Year	3 Years			
Renewals Available For:	•	1 Year			

Reducing Consumable Costs

### Abbreviations & Terminology:

**Advance Exchange** = Replacement of the faulty scanner with a new or as new unit.

**Advance Exchange PLUS** = Double Exchange, original product is returned after repair.

**Onsite Service** = A visit by a technician with a spare parts kit to repair the product at your premises.

**PM** = Preventative Maintenance, A scheduled visit by a technician to disassemble, clean, lubricate, recalibrate, reassemble and test.

**ADC** = Accidental Damage Cover

**NBD** = Next Business Day

**8hr Response** = A visit by a technician with spare parts within 8 working hours of the fault report.

**FW** = Firmware

**HW** = Hardware

**FW+HW** = Firmware + Hardware

**p/a** = per annum (per year)

**8 + 8** = 8 Hour response and 8 Hour fix

# Assurance Program



All Services Operate Monday - Friday, 09:00 am – 17:00 pm local time.

	Product Warranty	Bronze	Silver	Gold	Platinum
<b>Workgroup, Departmental and Network Scanners</b>					
fi-6110, fi-7160, fi-7260, fi-7180, fi-7280, fi-5530C2, fi-6010N and ScanSnap N1800					
Telephone Hotline Support	•	•	•	•	•
Online Support Ticketing System	•	•	•	•	•
Remote Desktop Support	–	•	•	•	•
Advance Exchange Product Replacement within:	1-2 Days	1-2 Days	1-2 Days	–	–
Customers Original Unit Returned After Repair (Exchange PLUS)	–	–	•	–	–
Visit By Engineer Carrying Spare Parts Kit: Response/Fix within:	–	–	–	8hr	8 + 8
Repairs Carried Out Onsite	–	–	–	•	•
Spare Parts, Labour & Shipping or Travel Included (Excluding Consumables)	•	•	•	•	•
Temporary Contingency Equipment if Repair not Possible	–	–	–	–	•
Accidental Damage Cover	–	–	–	–	•
Available for:	1 Year	2-5 Years	1-5 Years	1-5 Years	1-5 Years
Renewals Available For:	–	1-2 Years	1-2 Years	1-2 Years	1-2 Years
<b>Low-Volume Production Scanners</b>					
fi-6750S, fi-6670 and fi-6770					
Telephone Hotline Support	•	•	•	•	•
Online Support Ticketing System	•	•	•	•	•
Remote Desktop Support	–	–	•	•	•
Visit By Engineer + Spare Parts Kit: Response/Fix within:	NBD	NBD	8+8	8+8	8+8
Repairs Carried Out Onsite	•	•	•	•	•
Spare Parts, Labour & Travel Included (Excluding Consumables)	•	•	•	•	•
Temporary Contingency Equipment if Repair not Possible	–	–	•	•	•
Preventative Maintenance Visits per year:	–	–	–	1x PM / p/a	2x PM / p/a
Accidental Damage Cover	–	–	–	–	•
Available for (in years):	1 Year	2-5 Years	1-5 Years	1-5 Years	1-5 Years
Renewals Available For:	–	1-2 Years	1-2 Years	1-2 Years	1-2 Years
<b>Mid-Volume Production Scanners</b>					
fi-6800 and fi-5950					
Telephone Hotline Support	•	•	•	•	•
Online Support Ticketing System	•	•	•	•	•
Remote Interactive Support	–	–	•	•	•
Visit By Engineer Carrying Spare Parts Kit: Response / Fix within:	NBD	NBD	8+8	8+8	8+8
Repairs Carried Out Onsite	•	•	•	•	•
Spare Parts, Labour & Travel Included (Excluding Consumables)	•	•	•	•	•
Temporary Contingency Equipment if Repair not Possible	–	–	•	•	•
Preventative Maintenance Visits per year:	1x PM / p/a	1x PM / p/a	1x PM / p/a	2x PM / p/a	3x PM / p/a
Periodic Product Upgrades (Performed during PM Visits)	–	F	F	F+H	F+H
Accidental Damage Cover	–	–	–	–	•
Available for (in years):	1 Year	2-5 Years	1-5 Years	1-5 Years	1-5 Years
Renewals Available For:	–	1-2 Years	1-2 Years	1-2 Years	1-2 Years



## Abbreviations & Terminology:

**Advance Exchange** = Replacement of the faulty scanner with a new or as new unit.

**Advance Exchange PLUS** = Double Exchange, original product is returned after repair.

**Onsite Service** = A visit by a technician with a spare parts kit to repair the product at your premises.

**PM** = Preventative Maintenance, A scheduled visit by a technician to disassemble, clean, lubricate, recalibrate, reassemble and test.

**ADC** = Accidental Damage Cover

**NBD** = Next Business Day

**8hr Response** = A visit by a technician with spare parts within 8 working hours of the fault report.

**FW** = Firmware

**HW** = Hardware

**FW+HW** = Firmware + Hardware

**p/a** = per annum (per year)

**8 + 8** = 8 Hour response and 8 Hour fix

For further information visit <http://emea.fujitsu.com/assurance>

# Scanner Care: Consumables and Cleaning Kits

To keep your Fujitsu scanner working at its optimum, it is vital that a simple cleaning regime is in place. Using these PFU approved cleaning kits will ensure that things are kept running smoothly without disruption to scanning operation.

In addition, it will minimise scanning downtime to keep a consumable kit on hand, ready to replace worn rollers and pads.

Cleaning Kit	Contents	Expected Life	Order Number
ScanSnap Cleaning Kit for S1100, S300, S300M, S1300, S1300i, fi-5110EOX, fi-5110EOX2, fi-5110EOXM, S500, S500M, S510, S510M, S1500, S1500M, iX500, SV600, fi-5110C, fi-6110	24 x F1 Fluid Impregnated Wipes, Instructions	24 Applications	SC-CLE-SS
Workgroup & Departmental Scanner Cleaning Kit for fi-5015C, fi-4120C, fi-4220C, fi-4120C2, fi-4220C2, fi-5120C, fi-5220C, fi-6130, fi-6230, fi-6140, fi-6240, fi-6130Z, fi-6230Z, fi-6140Z, fi-6240Z, fi-7160, fi-7260, fi-7180, fi-7280, fi-4530C, fi-5530C, fi-5530C2, fi-4340C fi-6000NS, fi-6010N, N1800	72 x F1 Fluid Impregnated Wipes, Instructions	3 months @ 1 Application Per day, 1 month @ 3 Applications Per day	SC-CLE-WGD
Low Volume Scanner Cleaning Kit for M4097D, fi-4640S, fi-4750C, fi-4750L, fi-5650C, fi-5750C, fi-6750S, fi-6670, fi-6670A, fi-6770, fi-6770A, fi-6800	1 x Bottle F1 Fluid, 75 x Lint Free Cleaning Cloths, Instructions	3 months @ 1 Application Per day, 1 month @ 3 Applications Per day	SC-CLE-LV
High Volume Scanner Cleaning Kit for M4099D, fi-4990C, fi-4860C, fi-4860C2, fi-5900C, fi-5950	1 x Bottle F1 Fluid, 1 x Bottle F2 Fluid, 75 x Lint Free Cleaning Cloths, Instructions	3 months @ 1 Application Per day, 1 month @ 3 Applications Per day	SC-CLE-HV

Consumable Kit	Contents	Expected Life	Order Number
Consumable Kit for ScanSnap S300, S300M, S1300, S1300i	1 x Pick Roller, 2 x Pad Assembly	Up to 100k Scans	CON-3541-010A
Consumable Kit for ScanSnap iX500	1 x Pick Roller, 1 x Brake Roller	Up to 200k Scans	CON-3656-001A
Consumable Kit for ScanSnap S1500, S1500M, N1800, fi-6110	1 x Pick Roller, 2 x Pad Assembly	Up to 100k Scans	CON-3586-013A
Consumable Kit for ScanSnap fi-5110EOX, fi-5110EOX2, fi-5110EOXM, S500, S500M, S510, S510M, fi-5110C	1 x Pick Roller, 2 x Pad Assembly	Up to 100k Scans	CON-3360-001A
Consumable Kit for fi-5015C	1 x Pick Roller, 5 x Pad Assembly	Up to 100k Scans	CON-3209-009A
Consumable Kit for fi-4120C, fi-4220C	2 x Pick Roller, 4 x Pad Assembly	Up to 200k Scans	CON-3289-017A
Consumable Kit for fi-4120C2, fi-5120C, fi-4220C2, fi-5220C, fi-6010N, fi-6000NS	2 x Pick Roller, 4 x Pad Assembly	Up to 200k Scans	CON-3289-003A
Consumable Kit for fi-6130, fi-6230, fi-6140, fi-6240, fi-6130Z, fi-6230Z, fi-6140Z, fi-6240Z	2 x Pick Roller, 2 x Brake Roller	Up to 400k Scans	CON-3540-011A
Consumable Kit for fi-7160, fi-7260, fi-7180, fi-7280	2 x Pick Roller, 2 x Brake Roller	Up to 400k Scans	CON-3670-002A
Consumable Kit for fi-5530C, fi-5530C2	2 x Pick Roller, 4 x Pad Assembly	Up to 400k Scans	CON-3334-004A
Consumable Kit for fi-4340C	2 x Pick Roller, 4 x Pad Assembly	Up to 400k Scans	CON-3277-005A
Consumable Kit for fi-5650C, fi-5750C	2 x Pick Roller, 2 x Brake Roller	Up to 500k Scans	CON-3338-008A
Consumable Kit for fi-6670, fi-6670A, fi-6770, fi-6770A, fi-6750S	2 x Pick Roller, 2 x Brake Roller	Up to 500k Scans	CON-3576-012A
Consumable Kit for fi-4860C, fi-4860C2	2 x Pick Roller, 2 x Brake Roller, 2 x Separation Pad	Up to 600k Scans	CON-4315-007A
Consumable Kit for fi-5900C, fi-5950 – 2 Pack	2 x Pick Roller, 2 x Brake Roller, 2 x Separation Pad, 2 x Separation Roller	Up to 1.2m Scans	CON-3450-002A
Consumable Kit for fi-5900C, fi-5950 – 6 Pack	6 x Pick Roller, 6 x Brake Roller, 6 x Separation Pad, 6 x Separation Roller	Up to 3.6m Scans	CON-3450-006A
Consumable Kit for M4099D, fi-4990C	1 x Pick Roller Assembly, 1 x Brake Roller, 1 x Separation Pad	Up to 300k Scans	CON-4315-014A
Consumable Kit for fi-4750L	1 x Pick Roller, 2 x Pad Assembly	Up to 200k Scans	CON-3951-015A
Consumable Kit for M4097D, fi-4640S, fi-4750C	1 x Pick Roller, 2 x Pad Assembly	Up to 200k Scans	CON-3951-016A
Consumable Kit for fi-6800	1 x Pick Roller, 1 x Brake Roller, 1 x Separation Roller	Up to 600k Scans	CON-3575-001A
Consumable Kit for fi-6800 – 2 Pack	2 x Pick Roller, 2 x Brake Roller 2 x Separation Roller	Up to 1.2m Scans	CON-3575-002A

# ISV Partner Programme and Independent Software Vendor Collaboration Centre (ICC)

## What is the ICC?

PFU have initiated the ISV Partner Programme to further support the development of document related solutions throughout Europe's business environments.

This programme is set to make the benefits of document management solutions transparent for business users, who are looking into first time installations as well as expansion or migration of existing solutions. Furthermore, the ISV Partner Programme makes it easy for ISVs to integrate document capture hardware efficiently and reliably into their solutions. New software versions can be tested prior to their release, assuring business users of their functional capabilities and flawless interoperability with Fujitsu's document scanners.

Fujitsu acknowledges that Enterprise Content Management (ECM) is a vital process for an organisation to provide a market and society with valuable information, products and services. It is a crucial step for a company to implement a proper ECM, utilising various infrastructures and tools in the ever-evolving IT technology arena.

PFU is proud to offer an unequalled gateway to Europe and its enterprise customers – supporting the strive to expand and exploit business opportunities for:

- Document Related Technologies (DRT)
- Document Management & Archiving (DMA)
- Enterprise Content Management (ECM)
- Electronic Document & Records Management (EDRM)
- Information Management
- Forms Processing
- Workflow Processing
- Industrial Collaboration

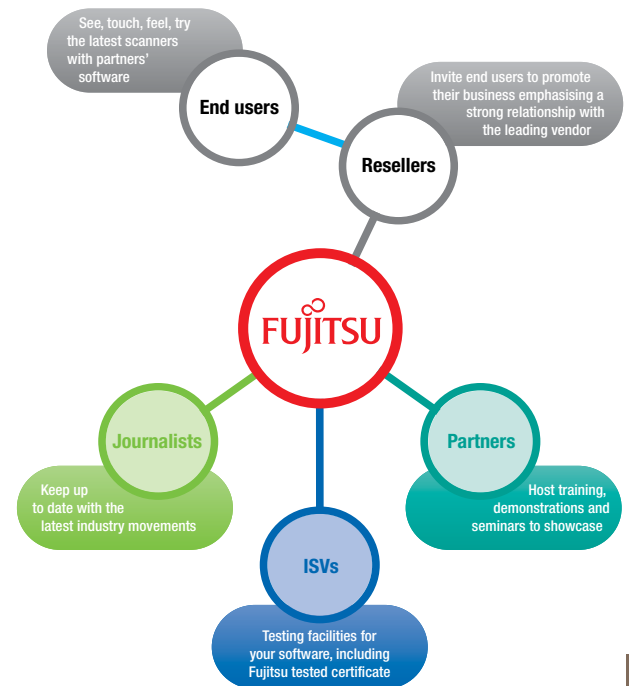
The ISV Partner Programme is one building block to standardise the process of implementation and to provide confidence in making the right choice. As an integral part of this offering, PFU hosts the ICC that is open to the public on request.

The Fujitsu ICC is set up to be the primary point of information and assistance for seeing, understanding, testing and experiencing complete document related solutions.

Located in London, ISVs, VARs, SIs, partners and enterprise users from all over Europe now have a unique location within comfortable reach where they can actually put their hands on what would otherwise be intangible – their future solution.

- Check that your latest software works with Fujitsu scanners
- Share the value of your Document Management Solution with your customers
- Discover why you need ECM to expand your corporate value

To become an active member of the ISV partner community, simply contact PFU and learn more about the programme. We will then coordinate deployment of your solution into the ICC and discuss further possibilities of collaboration and support.



# The Imaging Channel Program

To Register or find out more information  
[www.imaging-channel-program.com](http://www.imaging-channel-program.com)

The Imaging Channel Program has been designed to deliver real value to our community of imaging distributors, solution partners, resellers and end customers.

By creating a collaborative environment where participation and interaction within the community is encouraged, new business opportunities are generated and leveraged by each channel member in more EMEA regions, more vertical markets and more end customer applications.

The program provides you, our Imaging Channel Partner with a reliable and open platform to achieve profitable growth by sharing expertise and experience in a co-operative atmosphere and helps end customers identify you as the most knowledgeable and competent partner for their document management projects and investments.

Most importantly, as a PFU Imaging Partner you have the opportunity to grow your business in new verticals, new applications, new regions, provide best-in-class imaging products and compete more effectively in today's marketplace.

## IN PARTICULAR THE PROGRAM OFFERS YOU THE OPPORTUNITY FOR:

- **More profitable business**  
From increased sales opportunities and a range of benefits and incentive programs to reduce your cost of sales
- **Close Co-operation**  
With a supplier who is 100% committed to the channel. Our success is dependent upon yours, so your best interests are at the heart of our partnership
- **Increased Customer Satisfaction**  
Through easily identifiable, proven expertise and enhanced confidence in Fujitsu Imaging products
- **Enhanced skills**  
Via exclusive access to expert knowledge and valuable resources, enabling the delivery of Fujitsu imaging products to end customers

## PROGRAM BENEFITS

Depending on your certification level you can get access to a list of exclusive benefits:

- **Rebate Programs**  
We offer tiered rebates to channel partners based on the attainment of certain revenue goals
- **Lead Generation Programs**  
Access to pre-qualified Sales Leads generated by PFU
- **Co-marketing support**  
A Market Development Funds budget is available to assist our Imaging Partners in building a strong sales pipeline
- **Sales Incentive**  
We purposefully design incentives that are attainable and lucrative for our resellers
- **Project Registration and Pricing**  
Registering your major projects you get the possibility to improve your margins on specific end-user opportunities and enhanced probability to win the deal
- **Sales and Technical Support**  
Partners have a dedicated PFU Partner Manager to help build their business, and the support of our Channel Marketing and Technical Sales teams
- **Demonstration and Evaluation Units**  
Demonstration units are provided at a discount to resellers and enablers
- **Partner Advisory Forum and Partner Conferences**  
Our partner advisory forums and partner conferences are key venues to propose and evaluate new products, openly discuss market strategies and tactics, and discuss ideas to build a stronger partnership with you
- **Exclusive use of PFU Collaboration Centre**  
Take advantage of our state-of-the art technology facility where you can showcase your solutions, attend Industry seminars, invite your customers and generate more business by collaborating with other Fujitsu Imaging Community members

SPECIFICATIONS

			S1100	S1300i	iX500	N1800	SV600	fi-6110	fi-7160	fi-7260	fi-7180	fi-7280	fi-5530C2	fi-6750S	fi-6670	fi-6770	fi-6800	fi-5950	fi-65F	fi-6010N
Scanning speed	Simplex (mono)	Speed at 200 dpi, DIN A4, portrait (ppm)	8 <sup>3</sup>	12 <sup>3,7</sup>	25 <sup>4</sup>	20 <sup>3</sup>	3 Secs <sup>11</sup>	20 <sup>3</sup>	60 <sup>3</sup>	60 <sup>3</sup>	80 <sup>3</sup>	80 <sup>3</sup>	35	55 <sup>3</sup>	70	70	100 <sup>3</sup>	105 <sup>3</sup>	1 Sec <sup>2</sup>	25
	Simplex (colour)	Speed at 200 dpi, DIN A4, portrait (ppm)	8	9 <sup>7</sup>	25 <sup>3</sup>	20 <sup>3</sup>	3 Secs <sup>12</sup>	20 <sup>3</sup>	60 <sup>3</sup>	60 <sup>3</sup>	80 <sup>3</sup>	80 <sup>3</sup>	35	55 <sup>3</sup>	70	70	100 <sup>3</sup>	105 <sup>3</sup>	1.7 Secs	25
Duplex scanning	Duplex (mono)	Speed at 200 dpi, DIN A4, portrait (ipm)		24 <sup>3,7</sup>	50 <sup>4</sup>	40 <sup>3</sup>		40 <sup>3</sup>	120 <sup>3</sup>	120 <sup>3</sup>	160 <sup>3</sup>	160 <sup>3</sup>	70		140	140	200 <sup>3</sup>	210 <sup>3</sup>		50
	Duplex (colour)	Speed at 200 dpi, DIN A4, portrait (ipm)		18 <sup>7</sup>	50 <sup>4</sup>	40 <sup>3</sup>		40 <sup>3</sup>	120 <sup>3</sup>	120 <sup>3</sup>	160 <sup>3</sup>	160 <sup>3</sup>	70		140	140	200 <sup>3</sup>	210 <sup>3</sup>		50
Document feeding mode	Automatic Document Feeder (ADF)		• <sup>10</sup>	•	•	•		•	•	•	•	•	•	•	•	•	•	•	•	•
ADF capacity	Flatbed		1	10	50	50		50	80	80	80	80	100	200	200	200	500	500		50
Double feed detection feature																				
Interface (see description inside)			USB 2.0	USB 2.0	USB 3.0	RJ-45	USB 2.0	USB 2.0	USB 3.0	USB 3.0	USB 3.0	USB 3.0	USB 2.0	USB 2.0	USB 2.0	USB 2.0	USB 2.0	USB 2.0	USB 2.0	RJ-45
													SCSI-2		UW-SCSI	UW-SCSI	UW-SCSI	UW-SCSI		
Ultrasonic double feed detection feature					•	•		•	•	•	•	•		•	•	•	•	•	•	•
Light source	White lamp		LED RGB	LED RGB	LED RGB	•	White LED x 2	•	White LED x 2	White LED x 3	White LED x 2	White LED x 3	•	•	•	•	•	•	•	LED RGB
Dropout colour red, green, blue selectable						•		•	•	•	•	•	•	•	•	•	•	•	•	•
Digital colour dropout function / Multistreaming / Blank Page Detection						•		•	•	•	•	•	•	•	•	•	•	•	•	•
Document size	ADF Min.	DIN format	A8	A8	A8	A8	A9	A8	A8	A8	A8	A8	A8	A8	A8	A8	A8	A8	A8	A8
		mm	25.4 x 25.4	50.8 x 50.8	50.8 x 50.8	52 x 74	25.4 x 25.4	52 x 74	52 x 74	52 x 74	52 x 74	52 x 74	52 x 74	52 x 74	52 x 74	52 x 74	52 x 74	52 x 74	52 x 74	52 x 74
ADF Max.	DIN format	A4 <sup>1</sup>	A4	A4 <sup>1</sup>	A4 <sup>1</sup>	A3	A4 <sup>1</sup>	A4 <sup>1</sup>	A4 <sup>1</sup>	A4 <sup>1</sup>	A4 <sup>1</sup>	A4 <sup>1</sup>	A3	A3	A3	A3	A3	A3	A3	A4 <sup>1</sup>
	mm	210 x 297	210 x 297	210 x 297	210 x 297	297 x 420	210 x 297	210 x 297	210 x 297	210 x 297	210 x 297	210 x 297	297 x 420	297 x 420	297 x 420	297 x 420	297 x 420	297 x 420	297 x 420	210 x 297
Optical resolution (dpi)	ADF/FB (where applicable)	600	600	600	600	600	600	600	600	600	600	600	600	600	600	600	600	600	600	600
Standard equipment	Operator panel					•		•	•	•	•	•	•	•	•	•	•	•	•	•
	Document background selectable for ADF (white / black)																			
	Paper counter		•	•	•	•		•	•	•	•	•	•	•	•	•	•	•	•	•
	ScanSnap mode							•	•	•	•	•	•	•	•	•	•	•	•	•
Standard image processing functions	Centralised administration					•		•	•	•	•	•	•	•	•	•	•	•	•	•
	Deskew and Autocropping		•	•	•	•	•	•	•	•	•	•	•	•	•	•	•	•	•	•
	Special halftone pattern "Error Diffusion"					•		•	•	•	•	•	•	•	•	•	•	•	•	•
	JPEG Data compression		•	•	•	•	•	•	•	•	•	•	•	•	•	•	•	•	•	•
	Image emphasis					•		•	•	•	•	•	•	•	•	•	•	•	•	•
	Image memory					16 MB		16 MB	512 MB	512 MB	512 MB	512 MB	64 MB	384 MB	768 MB	768 MB	1 GB	1 GB		16 MB
Standard software bundles	PaperStream IP and PaperStream Capture (TWAIN / ISIS)							•	•	•	•	•	•	•	•	•	•	•	•	•
	ScanSnap Manager		•	•	•	•	•													
	ScanSnap Manager for fi Series								•	•	•	•								
	Adobe® Acrobat® Standard				• <sup>3</sup>		• <sup>3</sup>	•					•				•	•		
	ABBYY® FineReader for ScanSnap		•	•	•			•	•	•	•	•								
	CardMinder for PC / Cardiris for Mac		•	•	• <sup>3</sup>		• <sup>3</sup>													
	Pre-/Post-Imprinter								Post	Post	Post	Post	Post	Post	Post	Post-Front/Back	Pre/Post			
Recommended paper weight (g/m <sup>2</sup> )	220 V - 240 V ± 10% 50/60 Hz (VA)		52-209	64-107	40-209	52-127		52-127	27-413	27-413	27-413	27-413	52-127	31-209	31-209	31-209	20-209	31-209		52-127
Power consumption			<2.5 <sup>5</sup>	<9	<20	<50	<20	<28	<38	<41	<42	<43	<57	<130	<130	<130	<200	<250	<8	<88
ENERGY STAR® / Power consumption in energy save mode			• /<1	• /<2.6	• /<1.6	• /<1.5	• /<2.6	• /<5.4	• /<1.8	• /<1.8	• /<1.8	• /<1.8	• /<5.5	• /<3	• /<3	• /<3	• /<3.2	• /<3.2	• /<2	• /<10
Noise level (dBA)	Sound Pressure Level		<50	<50	<50	<50	<50	<50	<50	<50	<50	<50	<50	<53	<53	<53	<55	<55	<45	<50
	Sound Power Level		<6.2	<6.2	<6.5	<6.5	<6.5	<6.5	<6.2	<6.2	<6.2	<6.2	<6.5	<7.0	<7.0	<7.0	<7.5	<7.5	<6.0	<6.5
Weight (kg)	350g		1.4	3	6	3	3	4.2	8.8	8.8	8.8	8.8	8.5	35	17	35	32	50	0.9	13
	Height (mm)		34	77	168	172	383	130	163	234	163	234	193	342	300	342	345	500	40	281
	Width (mm)		273	284	292	300	210	292	300	300	300	300	399	690	641	690	460	540	145	315
Dimensions	Depth (mm)		47.5	99	159	226	156	143	170	577	170	577	225	500	432	500	430	540	234	415
	Typical daily throughput <sup>5</sup>		Min.			400		400	800	800	1200	1200	1000	3000	15,000	15,000	20,000	60,000	100	500
	Max.		50	80	250	2000		2000	4000	4000	6000	6000	5000	8000	45,000	45,000	60,000	100,000	400	2000

<sup>1</sup> A3 Scanning possible with use of bundled carrier sheet.  
<sup>2</sup> This scanning speed is doubled when the unit is being operated by bus-power.

<sup>3</sup> at 300 dpi.  
<sup>4</sup> at 600 dpi.

<sup>5</sup> For fi Series scanners, the maximum referenced value represents a peak volume to which the respective scanner is specified. In case this peak volume is used as regular daily volume, the scanners MTBF will be reduced. For ScanSnap this volume can be doubled.

<sup>6</sup> Powered from USB.  
<sup>7</sup> Scanning speed when powered by USB is a third of this figure.  
<sup>8</sup> Windows users only.  
<sup>9</sup> CardMinder for both Win and Mac.

<sup>10</sup> Manual feed only.  
<sup>11</sup> 3 Seconds per A3 Landscape page at 1,200 dpi  
<sup>12</sup> 3 Seconds per A3 Landscape page at 600 dpi

© PFI Imaging Solutions Europe Limited. 04/14.  
 All names, manufacturer names, brand and product designations are subject to special trademark rights and are manufacturer's trademarks and/or registered brands of their respective owners. All indications are non-binding. Technical data is subject to change without prior notification.

WINDOWS ONLY



S1100 Deluxe, S1300i Deluxe, iX500 Deluxe and SV600 are bundled with Rack2-Filer Smart and Magic Desktop.