

# USER MANUAL

Version 1.0 Released August 2021

# CODE READER

# 7010



**code**<sup>®</sup>  
codecorp.com

## Note from the Code Team

Thank you for purchasing the CR7010! Approved by infection control specialists, the CR7000 Series is fully enclosed and built with CodeShield® plastics, known to withstand the harshest chemicals used in the industry. Made to protect and extend the battery life of the Apple iPhone®, the CR7010 cases will keep your investment safe and clinicians on the go. Easily swappable batteries keep your case running as long as you are. Don't wait for your device to charge again—unless that's how you prefer to use it, of course.

Made for enterprises, the CR7000 series product ecosystem provides a durable, protective case and flexible charging methods so you can focus on what matters.

We hope you enjoy your enterprise mobility experience. Have any feedback? We'd love to hear from you.

Your Code Product Team  
[product.strategy@codecorp.com](mailto:product.strategy@codecorp.com)

The logo for Code Corporation, featuring the word "code" in a bold, lowercase sans-serif font. The letter "o" is red, while the other letters are black. A small registered trademark symbol (®) is located to the upper right of the "e".

**Table of Contents**

Note from the Code Team. . . . . 2

Table of Contents. . . . . 3

Cases and Accessories. . . . . 4

Product Assembly and Use. . . . . 5

Inserting/Removing Batteries. . . . . 6

Using the Charging Station. . . . . 6

Battery Charge Indicator. . . . . 7

Maintenance and Troubleshooting. . . . . 8

Warranty. . . . . 8

Legal Disclaimer. . . . . 8

Statement of Agency Compliance. . . . . 9

## Cases and Accessories

The following tables summarize the parts included within the CR7010 product line. More product details can be found on [Code's website](#).

### Cases

Part Number	Description
CR7010-8SE	Code Reader 7010 iPhone 8/SE Case, Light Gray
CR7010-XR11	Code Reader 7010 iPhone XR/11 Case, Light Gray

### Accessories

Part Number	Description
CRA-B710	Code Reader Accessory for CR7010 - Battery
CRA-A710	Code Reader Accessory for CR7010-8SE 1-Bay Charging Station, US Power Supply
CRA-A715	Code Reader Accessory for CR7010-XR11 1-Bay Charging Station, US Power Supply
CRA-A712	Code Reader Accessory for CR7010 10-Bay Battery Charging Station, US Power Supply

## Product Assembly and Use

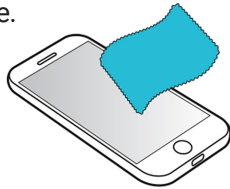
### Unpacking and Installation

Read the following information before assembling the CR7010 and its accessories.

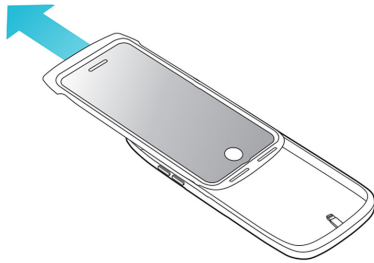
#### Inserting iPhone

The CR7010 case will arrive with case and case cover connected.

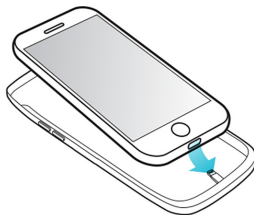
1. Clean iPhone carefully before loading in the CR7010 case.



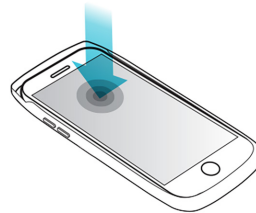
2. Using both thumbs, slide the cover up. DO NOT apply pressure on the cover without a phone in the case.



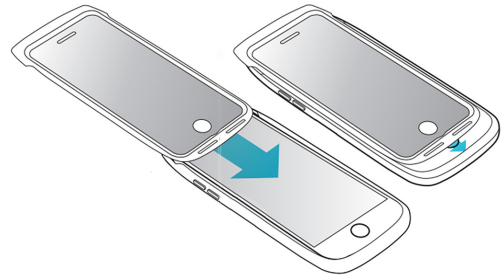
3. Insert iPhone carefully as shown.



4. Press iPhone into case.



5. Align cover with side rails and slide cover down.

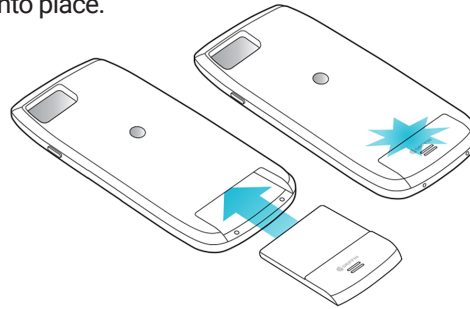


6. Snap to lock case securely.



## Inserting/Removing Batteries

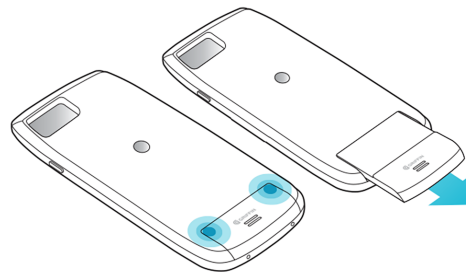
Only Code's CRA-B710 batteries are compatible with the CR7010 case. Insert the CRA-B710 battery into the cavity on the back side of the case; it will click into place.



To verify the battery is properly connected, a lightning bolt will be located on the iPhone's battery, signifying a charge status and successful battery installation.



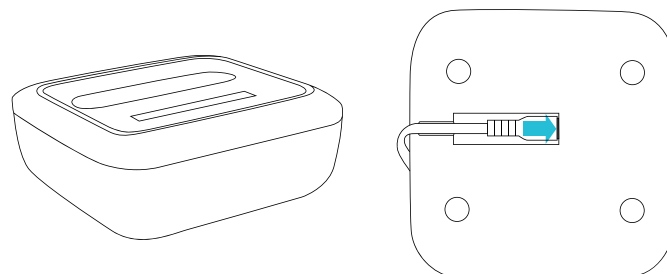
To remove the battery, use both thumbs and press both corners of the raised ridge on the battery to slide the battery out.



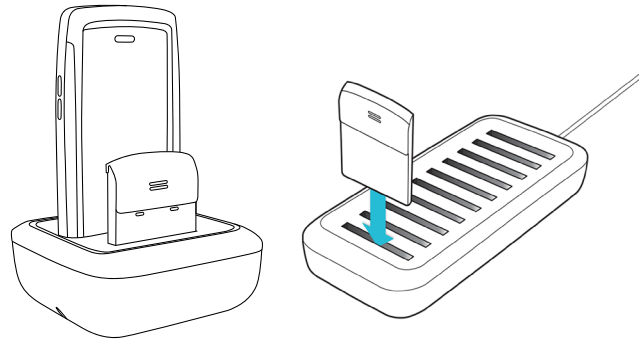
## Using the Charging Station

The CR7010 charging stations are designed to charge the CRA-B710 batteries. Customers can purchase 1-bay or 10-bay chargers.

Place the Charging Station on a flat, dry surface away from liquids. Connect the power cable into the bottom of the charging station.



Load Battery or Case as shown. It is recommended to fully charge each new battery before the first use even though a new battery may have residual power upon receiving.



The CRA-B710 batteries can only be inserted one direction. Ensure the metal contacts on the battery meet with the metal contacts within the charger. When inserted correctly, the battery will lock into place.

LED charge indicators on the side of the charging stations show the charge status.

- **Blinking red** – battery is charging
- **Green** – battery is fully charged
- **Colorless** – no battery or case is present or, if a battery is inserted, a fault may have occurred. If a battery or case is securely inserted into the charger, and the LEDs do not light up, try reinserting the battery or case or insert it into a different bay to verify if the issue resides with the battery or the charger bay.

## Battery Charge Indicator

To view the charge level of the CR7010 case, press the button on the back of the case.

- **Green** – 66% - 100% charged
- **Amber** – 33% - 66% charged
- **Red** – 0% - 33% charged



## Battery Best Practices

To efficiently use the CR7010 case and battery, the iPhone should be kept at or near full charge. The CRA-B710 battery should be used for power draw and swapped when nearly depleted. The case is designed to keep the iPhone charged. Placing a fully-charged battery into a case with a half or nearly dead iPhone makes the battery work overtime, creating heat and draining power rapidly from the battery. If the iPhone is kept at a nearly full charge, the battery slowly delivers current to the iPhone allowing the charge to last longer. The CRA-B710 battery will last approximately 6 hours under high-power consumption workflows.

Take note that the amount of power draw depends upon the applications being actively used or open in the background. For maximum battery usage, exit unneeded applications and dim the screen to approximately 75%. For long-term storage or shipping, remove the battery from the case.

## Maintenance and Troubleshooting

### Approved Disinfectants

Please review the [approved disinfectants](#).

### Routine Cleaning and Disinfection

The iPhone screen and screen protector should be kept clean to maintain device responsiveness. Thoroughly clean the iPhone screen and both sides of the CR7010 case cover before installing the iPhone as they can get dirty.

Approved medical disinfectants can be used to clean the CR7010 case and charging bays.

- Ensure the screen shield is correctly snapped shut.
- Use disposable wipe cloth or apply cleaner to paper towel, then wipe.
- Do not submerge the case in any liquid or cleaner. Simply wipe it with the approved cleaners and allow it to air dry or wipe dry with paper towel.
- For charging docks, remove all batteries before cleaning; do not spray cleaner into the charging wells.

### Troubleshooting

If the case isn't communicating to the phone, restart the phone, remove and reinsert the battery and/or remove the phone from the case and reinsert it. If the battery indicator does not respond, the battery may be in shutdown mode due to low power. Charge the case or battery for approximately 30 minutes; then check if the indicator is providing feedback.

### Contact Code for Support

For product issues or questions, please contact Code's support team at [codecorp.com/code-support](https://codecorp.com/code-support).

## Warranty

The CR7010 comes with a 1-year standard warranty.

## Legal Disclaimer

Copyright © 2021 Code Corporation. All Rights Reserved.

The software described in this manual may only be used in accordance with the terms of its license agreement.



No part of this publication may be reproduced in any form or by any means without written permission from Code Corporation. This includes electronic or mechanical means such as photocopying or recording in information storage and retrieval systems.

**NO WARRANTY.** This technical documentation is provided AS-IS. Further, the documentation does not represent a commitment on the part of Code Corporation. Code Corporation does not warrant that it is accurate, complete or error free. Any use of the technical documentation is at the risk of the user. Code Corporation reserves the right to make changes in specifications and other information contained in this document without prior notice, and the reader should in all cases consult Code Corporation to determine whether any such changes have been made. Code Corporation shall not be liable for technical or editorial errors or omissions contained herein; nor for incidental or consequential damages resulting from the furnishing, performance, or use of this material. Code Corporation does not assume any product liability arising out of or in connection with the application or use of any product or application described herein.

**NO LICENSE.** No license is granted, either by implication, estoppel, or otherwise under any intellectual property rights of Code Corporation. Any use of hardware, software and/or technology of Code Corporation is governed by its own agreement. The following are trademarks or registered trademarks of Code Corporation: CodeXML<sup>®</sup>, Maker, QuickMaker, CodeXML<sup>®</sup> Maker, CodeXML<sup>®</sup> Maker Pro, CodeXML<sup>®</sup> Router, CodeXML<sup>®</sup> Client SDK, CodeXML<sup>®</sup> Filter, HyperPage, CodeTrack, GoCard, GoWeb, ShortCode, GoCode<sup>®</sup>, Code Router, QuickConnect Codes, Rule Runner<sup>®</sup>, Cortex<sup>®</sup>, CortexRM, Cortex-Mobile, Code, Code Reader, CortexAG, CortexStudio, CortexTools, Affinity<sup>®</sup>, and CortexDecoder<sup>™</sup>.

All other product names mentioned in this manual may be trademarks of their respective companies and are hereby acknowledged. The software and/or products of Code Corporation include inventions that are patented or that are the subject of patents pending. Relevant patent information is available on our website. [See which Code Barcode Scanning Solutions hold U.S. patents \(codecorp.com\)](#).

The Code Reader software is based in part on the work of the Independent JPEG Group.

Code Corporation, 434 West Ascension Way, Ste 300, Murray, Utah 84123

[codecorp.com](http://codecorp.com)

## Statement of Agency Compliance

NOTE: This equipment has been tested and found to comply with the limits for a Class B digital device, pursuant to part 15 of the FCC Rules. These limits are designed to provide reasonable protection against harmful interference in a residential installation. This equipment generates, uses and can radiate radio frequency energy and, if not installed and used in accordance with the instructions, may cause harmful interference to radio communications. However, there is no guarantee that interference will not occur in a particular installation. If this equipment does cause harmful interference to radio or television reception, which can be determined by turning the equipment off and on, the user is encouraged to try to correct the interference by one or more of the following measures:



- Reorient or relocate the receiving antenna.
- Increase the separation between the equipment and receiver.
- Connect the equipment into an outlet on a circuit different from that to which the receiver is connected.
- Consult the dealer or an experienced radio/TV technician for help.

Industry Canada (IC) This device complies with Industry Canada licence-exempt RSS standard(s). Operation is subject to the following two conditions: (1) this device may not cause interference, and (2) this device must accept any interference, including interference that may cause undesired operation of the device.

Industrie Canada (IC) Le présent appareil est conforme aux CNR d'Industrie Canada applicables aux appareils radio exempts de licence. L'exploitation est autorisée aux deux conditions suivantes : (1) l'appareil ne doit pas produire de brouillage, et (2) l'utilisateur de l'appareil doit accepter tout brouillage radioélectrique subi, même si le brouillage est susceptible d'en compromettre le fonctionnement.

Use of the Made for Apple® badge means that an accessory has been designed to connect specifically to the Apple product(s) identified in the badge and has been certified by the developer to meet Apple performance standards. Apple is not responsible for the operation of this device or its compliance with safety and regulatory standards.

Please note that the use of this accessory with iPhone may affect wireless performance.