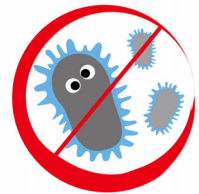




Philips  
LCD monitor

- Clinical review display
- 21.5" / 54.6 cm

C221S3UCW



AntiMicrobial

## Simplicity with USB display

ideal for use in clinical environment

This Philips USB monitor is ideal for usage in mobile clinical environment where AC power may not be conveniently accessible. Simply connect it with a single USB cable from your notebook to deliver video and power.

### Clinical Review

- AntiMicrobial housing actively inhibits bacterial growth
- Medical grade power supply ensures safety with low emission
- Design complements clinical environment

### Simplicity makes sense

- Single USB 2.0 laptop connection for power and video
- No power or video cables required
- True plug and play operation
- Instant on, thanks to LED technology

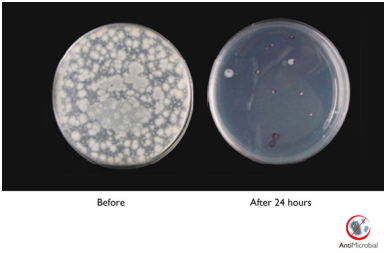
### Ergonomic design

- 70mm height adjustment for ideal sitting position
- Tilt and swivel adjustment for an ideal viewing angle

**PHILIPS**

# Highlights

## AntiMicrobial housing



Germ growth has become a growing problem in hospitals and clinical environments worldwide as they can cause life-threatening infections. Philips clinical review displays take care of this challenge by using JIS Z2801 compliant antimicrobial additive in its housing material making it an integral part of the display housing. Your well being along with your patients is now assured by this protective shield that impedes the growth of most common microorganisms such as "Staphylococcus aureus (Gastroenteritis)", "Escherichia coli (E Coli)" and "Klebsiella (Pneumonia)", for example.

## Medical grade power supply

Basic safety, essential performance and reliability are essential requirements in a professional clinical environment. Unlike standard displays, Philips clinical review displays employ special medical grade power supplies in order to meet these requirements. It complies with EN/IEC 60601-1 standard ensuring basic safety and essential performance. Additionally it also complies with EN/IEC 60601-1-2 collateral standard for medical grade electromagnetic tests and compatibility. Many countries, hospitals and clinics mandate compliance to these standards as a requirement.

## LED technology

White LED's are solid state devices which light up to full, consistent brightness faster saving startup time. LED's are free from mercury content which allows for eco-friendly recycling and disposal process. LED's allow for better dimming control of LCD backlight, resulting in super high contrast ratio. It also gives superior

color reproduction thanks to consistent brightness across the screen.

## USB Power, Video

Philips USB monitor is capable of displaying images and drawing power directly from your laptop USB ports with a single USB cable. No extra power or video cables are required resulting in a simple, single cable, extra low power connection between your laptop and monitor.

## 70mm height adjustment

The Compact Ergo Base is a 'people friendly' Philips monitor base that tilts, swivels and is height adjustable so each user can position the monitor for maximum viewing comfort and efficiency.

## Screen tilt and swivel

Screen tilt and swivel is a mechanism built into the base permits the monitor to swivel and tilt backward or forward.



# Specifications

## Picture/Display

- LCD panel type: TFT-LCD (TN)
- Backlight type: W-LED system
- Panel Size: 21.5 inch / 54.6 cm
- Effective viewing area: 476.6 (H) x 268.1 (V)
- Aspect ratio: 16:9
- Optimum resolution: 1920 x 1080 @ 60Hz
- Response time (typical): 5 ms
- Brightness: 150 cd/m<sup>2</sup>
- Contrast ratio (typical): 1,000:1
- Pixel pitch: 0.248 x 0.248 mm
- Viewing angle: 160° (H) / 150° (V), @ C/R > 10
- Display colors: 16.7 M
- sRGB

## Connectivity

- Video Signal Input: USB 2.0

## Convenience

- Other convenience: Kensington lock, VESA mount (100x100mm)
- Plug & Play Compatibility: Mac OS X, sRGB, Windows 8/7/Vista
- OSD Languages: English, French, German, Italian, Portuguese, Russian, Simplified Chinese, Spanish

## Stand

- Height adjustment: up to 70 mm
- Swivel: -65/65 degree
- Tilt: -5/20 degree

## Power

- On mode: 10.3 W (typ.)
- Standby mode: 0.3 W (typ.)
- Off mode: 0 W
- Power LED indicator: Operation - White
- Power supply: USB 2.0 ports
- External power supply: 100-240VAC, 50-60Hz (Medical cert.: IEC60601-1 / EN60601-1)

## Dimensions

- Product with stand(max height): 507 x 402 x 201 mm
- Product without stand (mm): 507 x 323 x 59 mm
- Packaging in mm (WxHxD): 565 x 461 x 131 mm

## Weight

- Product with stand (kg): 3.85 kg
- Product without stand (kg): 3.44 kg
- Product with packaging (kg): 5.13 kg

## Operating conditions

- Temperature range (operation): 0°C to 40°C °C
- Temperature range (storage): -20°C to 60°C °C
- Relative humidity: 20%-80 %
- Altitude: Operation: +12,000ft (3,658m), Non-operation: +40,000ft (12,192m)
- MTBF: 30,000 hour(s)

## Anti-Microbial

- Anti-microbial housing
- JISZ2801Anti-microbial housing

## Sustainability

- Environmental and energy: EPEAT Silver, RoHS
- Recyclable packaging material: 100 %
- Specific Substances: PVC / BFR free housing, Lead free, Mercury free

## Compliance and standards

- EMC: CE Mark, IEC/EN60601-1-2
- Safety: CE Mark, IEC/EN60601-1
- Ergonomic/Others: JIS Z2801, WEEE

## Cabinet

- Front bezel: White
- Rear cover: White
- Foot: White
- Finish: Texture



Issue date 2013-06-06

Version: 2.0.1

12 NC: 8670 001 02518  
EAN: 87 12581 68597 3

© 2013 Koninklijke Philips N.V.  
All Rights reserved.

Specifications are subject to change without notice.  
Trademarks are the property of Koninklijke Philips N.V.  
or their respective owners.

[www.philips.com](http://www.philips.com)

\* Please note: This display is not certified to be used in patient vicinity.  
Any use for primary diagnostics is the sole responsibility of the  
hospital or clinic operator only.