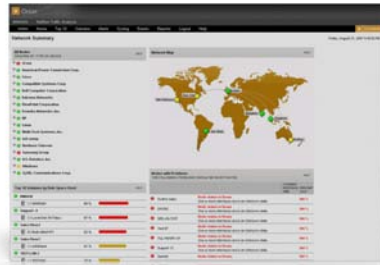




# Orion

## Scalable Performance Management That Puts Complexity in Its Place



We know it's not easy to maintain 100% availability of all network resources, especially in an ever-changing network environment. Basic monitoring tools help, but to really get the big network picture, you need Orion Network Performance Monitor.

Orion is a comprehensive Web-enabled fault, bandwidth and performance management platform that gives you broad visibility across your network.

Thousands of customers worldwide trust Orion and

its expandable modules to monitor real-time statistics and the availability of their network.

### Increased Network Availability and Performance

Orion enables network engineers to quickly detect, diagnose and resolve network performance problems and outages. Orion offers many out-of-the-box network-centric views that are designed to deliver the critical information a network engineer needs. Furthermore, Orion sends these alerts via e-mail, pager, SNMP trap, text-to-speech, syslog messages and more.

### Improved IT Efficiency

Orion is the easiest product of its kind to use and maintain, meaning network managers will spend more time actually managing networks, not supporting Orion.

### Orion Highlights:

- Monitors and analyzes real-time, in-depth **network performance metrics** for routers, switches, servers, and any other SNMP-enabled devices, with support for custom MIBs
- Provides a highly **customizable, sophisticated Web interface** that supports multiple views by user and department, as well as cutting-edge map views of your global network
- Enables **advanced alerting** for correlated events, sustained conditions, and complex combinations of device states
- Scales to **accommodate growth and management needs** with a hot standby engine, multiple polling engines, and additional Web server interfaces
- Extends management capabilities to **NetFlow** traffic analysis and monitoring of VoIP performance, **wireless** devices, **applications** and **server** health with plug-and-play modules

“We evaluated a number of solutions on the market and Orion is just as scalable and flexible as many other large, expensive framework solutions such as HP OpenView, but requires significantly less effort to use and maintain. SolarWinds products have paid for themselves ten times over, and serve as an easy-to-use, intuitive, all-in-one solution.”

Director of Technology, Smart City



## Supporting Features

### Fully Customizable Web Views

Orion's Web-based views can be customized to meet the needs of small companies, large enterprises and service providers. Views are fully customizable and Web accounts can be limited based upon department, geographic area, customer ID or any user-defined field.

### Custom MIB Support

Customers can create a custom poller to monitor any SNMP-enabled device value that has a MIB, which amounts to virtually any statistic that a network device records. Examples of custom MIB monitoring include monitoring temperature on a switch, fan speed on a router, and battery status on a UPS.

### Network Maps

Orion's web-enabled maps provide a real-time pictorial status of the network topology with the ability to click and drill into regions, departments, and devices.

### Syslog Viewer

Orion includes a Syslog Viewer which can receive, process, forward, and send syslog messages. Advanced features such as alerting, filtering on severity/facility rules, and parsing messages are also included.

### Sophisticated Alerting

Orion's powerful Alert Engine allows you to configure alerts for hundreds of different network scenarios and includes the ability to define device dependencies. For example, users can set up correlated alerts, sustained alerts, and escalated alerts.

### Advanced Reporting Engine

Orion's Advanced Reporting Engine allows you to pull the data that you need from the Orion database and display it on the Web or directly in the Report Writer.

### SNMP Compatibility

Orion allows more secure polling of SNMP values from any device that supports SNMP v3. Orion can also receive SNMP traps, which are specially-configured notifications sent by network devices when unusual events are detected on that node. Orion can also monitor elements on custom SNMP ports other than the default port of 161.

### Open Architecture

Orion uses an open SQL Server database, Windows-based polling engines and an interactive, customizable web interface for viewing the network status and statistics. Orion uses industry-standard MIBs and protocols to monitor the network and does not require the use of remote probes or agents.

### Integration with SolarWinds Toolsets

With a SolarWinds Toolset installed on your desktop you can "right-click" on a node or interface in Orion and directly launch a Toolset application.

### Integration with Orion Modules

Orion integrates with several modules that extend its capabilities to VoIP infrastructure, network traffic, servers, wireless devices and applications.

### System Requirements:

Pentium IV - 1 GHz, 1 GB RAM, 2 GB hard drive space available; Windows 2003 Server (32-bit or 64-bit) including R2, with IIS installed; SQL Server 2000 SP4 Standard/Enterprise or SQL Server 2005 Express/Standard/Enterprise

### Orion Modules:



- NetFlow Traffic Analyzer
- VoIP Monitor
- Wireless Network Monitor
- Application Monitor
- Hot Standby Engine

Orion modules extend the capabilities of Orion to network traffic including VoIP, servers, wireless devices and applications.

For additional information, please contact SolarWinds at 866.530.8100 or e-mail [sales@solarwinds.com](mailto:sales@solarwinds.com).

To locate an international reseller near you, visit [www.solarwinds.com/distributor/locator.html](http://www.solarwinds.com/distributor/locator.html)