

## Wireless-N300 3-in-1 Router/AP/Range Extender

- Multiple 3-in-1 Router/Access Point /Range Extender wireless modes
- Two detachable 5dBi antennas for more powerful and wider coverage
- 4 SSIDs help manage bandwidth allocation and access control
- Powerful Online Multitasking at up to 30,000 Data Sessions

Add to comparison list

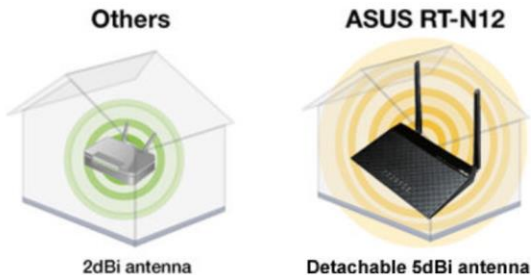


## 3-in-1 Router/AP/Range Extender for Large Environment

The RT-N12 is a 300Mbps Wireless N Router with both wired and wireless network connections designed specifically for small business and home office networking use. With 2T2R MIMO Technology and two detachable 5dBi high gain antennas, the RT-N12 creates an extended coverage area with advanced wireless performance, making it ideal for streaming HD video, placing VoIP calls and online gaming. With the ASUS unique Quick Internet Setup and Graphical User Interface, the RT-N12 is easy for anyone to install and manage, even for novices! The RT-N12 even allows you to set up 4 SSIDs, so, users can flexibly manage internet access and bandwidth allocation.

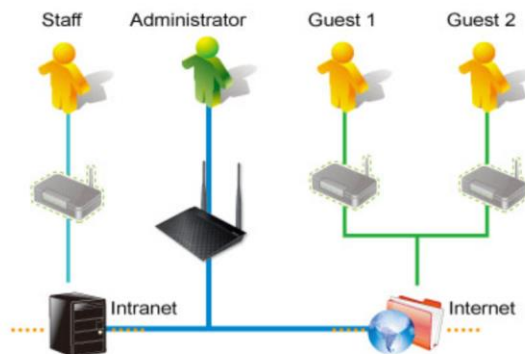
### Extremely Long Operating Range with High Power Technology

This unique and efficient design drastically increases wireless signal coverage and quality with a built-in signal amplifier. Advanced High Power technology from ASUS enhances signal strength and can almost double the range.



### Multiple SSID for Flexible Wireless Access Control

Share your internet connection with your guests with no need to share your personal password or network resources. ASUS Guest Network supports up to three separate guest networks, each with its own usage limits and password. Guests cannot access your primary network or any other connected devices.



### 3-Step Easy Setup Through Your Pad, Smartphone, or PC

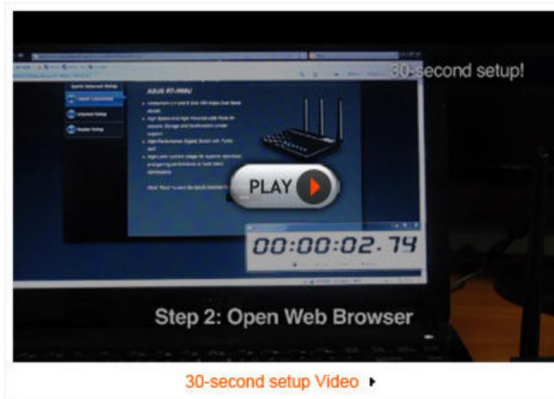
With the RT-N12, setup is a breeze. Simply power and connect the router and open a browser on a Wi-Fi-enabled device like a notebook or pad. You will then be taken to a setup page with a prompt to enter the ID/password from your internet provider, and that's it! Setting up your network is easier than ever.



Step1: Open web browser    Step2: Enter ID/Password    Done!

### Get Online in 30 Seconds

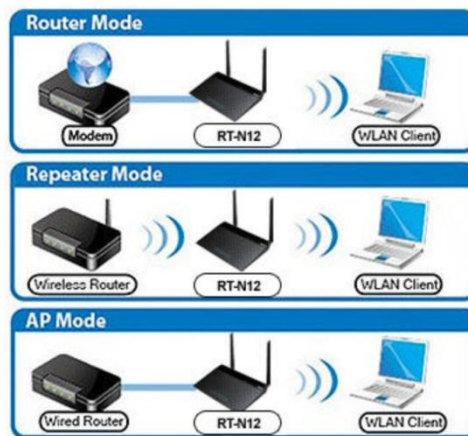
Smart auto-detection design makes it possible for you to go from first plugging in the RT-N12 to setup completion in 30 seconds! Compared to the lengthy installs and hassles of other routers, this development from ASUS offers a true wonder of ease of use, and puts fast networking speeds within your reach quicker than ever before.



[30-second setup Video](#)

### EZ Switch

Software EZ switch provides a quick and easy way to change between router, repeater and AP modes. Instantly select router, range extender, and access point modes with extra-quick settings in the user-friendly interface. No delays and no hassles – whatever your situation, take your pick and get connected.



### Keep Up to Date!

Remember to always keep your device's firmware up to date so you can benefit from the very latest service and security enhancements — and get exciting new features! [Learn more about updating new firmware.](#)

## What's Inside the Box

- RT-N12 Wireless-N300 Router
- RJ45 Cable x 1
- Power Supply x 1
- 5dbi Antenna x 2
- Warranty card
- Quick start guide

## Specifications

- Wireless Type: 802.11 b/g/n
- Wireless Speed: Up to 300 Mbps
- Wireless Frequency: 2.4 GHz
- Warranty: 2 years



Scan for full features and specs

## Connectivity

<b>Network Standard</b>	IEEE 802.11 b/g/n
<b>Product Segment</b>	N300 complete networking
<b>Data Rate</b>	802.11b: 11Mbps 802.11g: 54Mbps 802.11n: Up to 300Mbps
<b>Antenna</b>	2 x Detachable 2dBi antenna x 2 *Antenna type will differ according to local regulations and requirement in each country
<b>Operating Frequency</b>	2.4 GHz
<b>Security</b>	64-bit WEP, 128-bit WEP, WPA2-PSK, WPA-PSK, WPA-Enterprise, WPA2-Enterprise WPS support
<b>Management</b>	UPnP, IGMP v1/v2/v3, DNS Proxy, NTP Client, DDNS, Port Trigger, Virtual Server, DMZ
<b>VPN Support</b>	IPSec Pass-Through PPTP Pass-Through L2TP Pass-Through PPTP server
<b>Ports</b>	1 x RJ45 for 10/100 BaseT for WAN 4 x RJ45 for 10/100 BaseT for LAN
<b>Button</b>	WPS Button, Power Button
<b>LED</b>	PWR x 1 Wi-Fi x 1 WAN x 1 LAN x 4
<b>Dimensions</b>	179 x 128 x 28 mm (WxDxH)
<b>Weight</b>	275 g