



2-Port USB 3.0 Extender

Quick Start Guide



Before you get started, ensure that all the drivers required for your USB device(s) are installed.

1. Disable "Suspend" settings on your computer.

a. For Windows® 7 or 8 open the Control Panel, then select "Power Options."

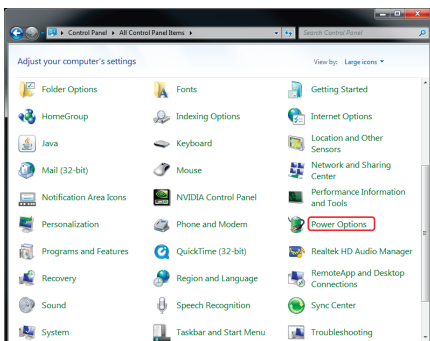


Figure QS-1. Control panel.

b. For each of the plans listed, click on "Change plan settings."

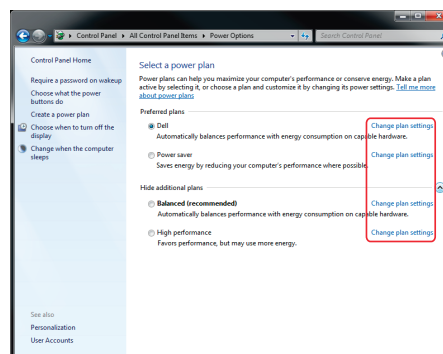


Figure QS-2. Change settings screen.

c. Select "Never" for "Put the computer to sleep" for all the configurations presented. Then click "Change advanced power settings."

**Customer
Support
Information**

Order toll-free in the U.S.: Call 877-877-BBOX (outside U.S. call 724-746-5500)
 FREE technical support 24 hours a day, 7 days a week: Call 724-746-5500 or fax 724-746-0746
 www.blackbox.com • info@blackbox.com

Black Box Tech Support: FREE! Live. 24/7.

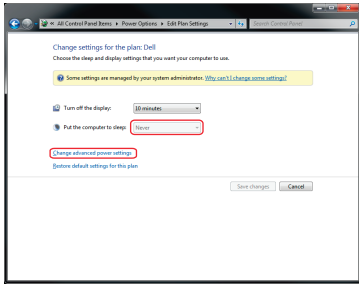


Figure QS-3. "Change settings for the plan" screen.

- d. Expand "USB settings." Expand "USB selective suspend setting." Select "Disabled" for all options listed.

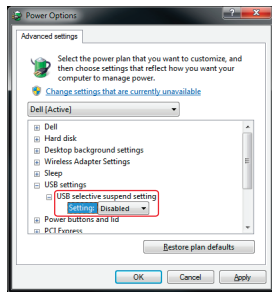


Figure QS-4. "Expand USB settings" screen.

2. Place the Remote Extender where desired and attach the USB 3.0 device(s) to the Remote Extender.

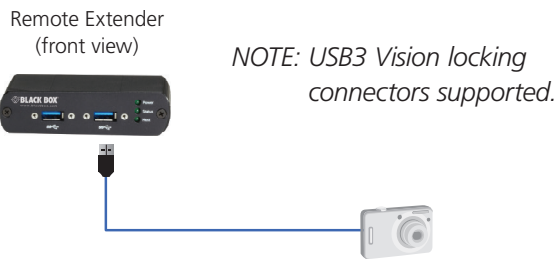


Figure QS-5. Connect the USB device to the Remote Extender.

About Black Box

Black Box provides an extensive range of networking and infrastructure products. You'll find everything from cabinets and racks and power and surge protection products to media converters and Ethernet switches all supported by free, live 24/7 Tech support available in 60 seconds or less.

© Copyright 2016. Black Box Corporation. All rights reserved. Black Box® and the Double Diamond logo are registered trademarks of BB Technologies, Inc. Windows is a registered trademark of Microsoft Corporation. Any third-party trademarks appearing in this manual are acknowledged to be the property of their respective owners.

3. Power the Remote Extender with the included 24 VDC adapter and tighten the locking ring.

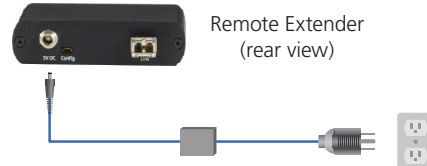


Figure QS-6. Power the remote extender.

4. Directly connect the Local and Remote Extenders with a duplex LC-LC crossover multimode fiber cable (not included).

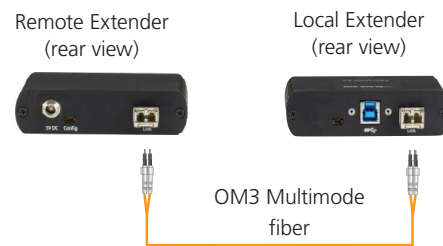


Figure QS-7. Connect local and remote extenders.

NOTE: The maximum distance between local and remote extenders is 328 feet (100 m), although storage devices may only achieve 165 feet (50 m).

5. Connect the Local Extender to a computer with the included USB cable.

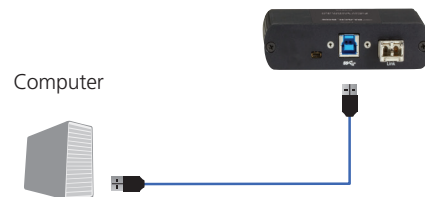


Figure QS-8. Connect the local extender to a computer.

NOTE: Power adapter is not required at the local extender for operation.

NOTE: Product does not support USB 1.1 and 2.0 devices.