

Canon

TS3400 series

E3400 series

Getting Started

คำแนะนำเริ่มต้น

Mari Memulai

Hướng dẫn bắt đầu

入門指南

입문 가이드

Read **Safety and Important Information**
(addendum) first.

โปรดอ่าน **ข้อมูลความปลอดภัยและสำคัญ** (ในภาค
ผนวก) ก่อน

Baca **Keamanan dan Informasi Penting** (lampiran)
terlebih dahulu.

Trước tiên đọc **Thông tin an toàn và quan trọng**
(phụ lục).

請首先閱讀「**安全與重要資訊**」(附錄)。

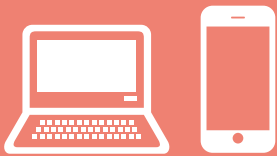
안전 및 중요 정보(부록)를 먼저 읽으십시오.



QT63616V01



Installing the Printer.....	page 1
การติดตั้งเครื่องพิมพ์.....	หน้า 1
Memasang Pencetak.....	halaman 1
Cài đặt máy in.....	trang 1
安裝印表機.....	第1頁
프린터 설치하기.....	1페이지



Connecting to a Computer, Smartphone or Tablet.....	page 4
การเชื่อมต่อกับคอมพิวเตอร์ สมาร์ทโฟน หรือแท็บเล็ต.....	หน้า 4
Menghubungkan ke Komputer, Ponsel Pintar atau Tablet.....	halaman 4
Kết nối với máy tính, smartphone hoặc máy tính bảng.....	trang 4
連接至電腦、智慧型手機或平板.....	第4頁
컴퓨터, 스마트폰 또는 태블릿에 연결하기.....	4페이지

Holding the Printer

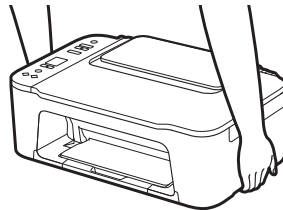
การถือเครื่องพิมพ์

Memegang Pencetak

Giữ máy in

握持印表機

프린터 들기



Setting Up the Printer



For Setup, visit the URL

<https://ij.start.canon>

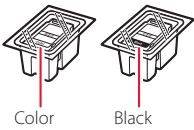
or scan the code with your mobile device



● Follow the instructions below if you do not have an internet connection.

1. Box Contents

● FINE cartridges

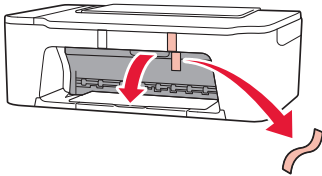


- Power Cord
- Setup CD-ROM (E3400 series only)
- Safety and Important Information
- Getting Started (this manual)

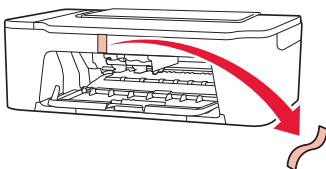
2. Removing Packing Materials



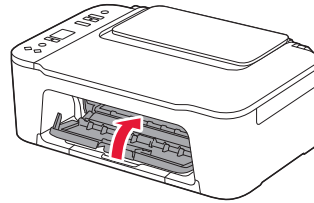
1 Remove the orange tape on the right and open the cover.



2 Remove the orange tape on the left.



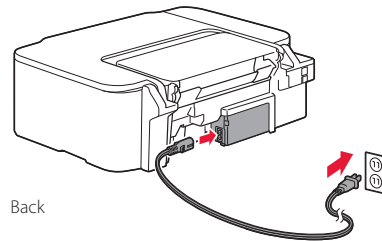
3 Close the cover.



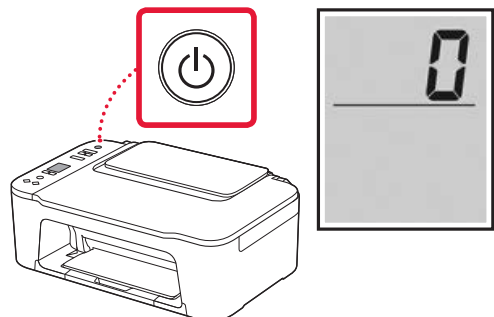
3. Turning on the Printer



1 Connect the power cord.



2 Press the **ON** button.



Important

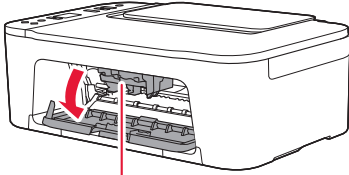
If another screen appears, see "If any of the following screens appear" on page 3 and follow the instructions.

Setting Up the Printer

4. Installing the FINE Cartridges



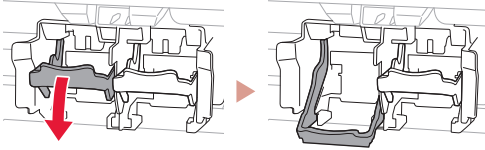
1 Open the cover.



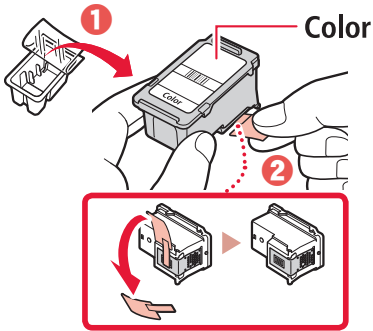
⚠ Caution

Do not touch the FINE cartridge holder until it stops moving.

2 Lower the ink cartridge lock lever on the left-hand side.

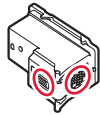


3 Remove the Color FINE cartridge from the package and remove the protective tape.

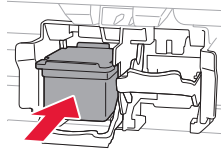


Important

- Do not touch the ink on the protective tape. It could stain your hands or surrounding objects.
- Do not touch the areas shown in the figure. Otherwise, the printer may not print correctly.



4 Insert the Color FINE cartridge in the FINE cartridge holder.

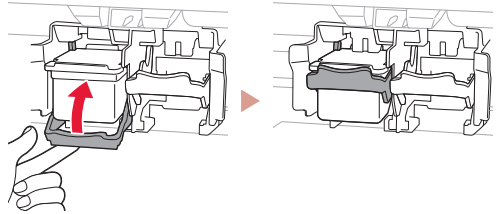


Important

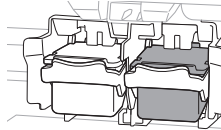
Do not bump the FINE cartridge. Doing so may cause a malfunction.



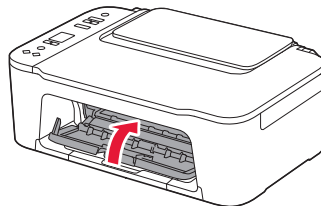
5 Raise the ink cartridge lock lever.



6 Repeat steps 2 to 5 and install the Black FINE cartridge on the right-hand side.



7 Close the cover.



8 Check that the following screen appears.



Important

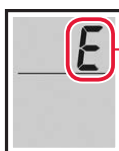
If E > 0 > 4 appears on the screen, see "If any of the following screens appear" on page 3 and follow the instructions.

Select the connection method that best matches how you will use the printer.

- To use the printer without connecting to any other devices
 - ➔ Setup is now complete.
- To use the printer connecting to a computer or smartphone
 - ➔ Proceed to the next page.



If any of the following screens appear



Numbers or letters

Check the screen, and then follow the corresponding instructions below.



Install the FINE cartridges.

➔ "4. Installing the FINE Cartridges" on page 2



Protective material remaining.

➔ "2. Removing Packing Materials" on page 1



FINE cartridges are not installed correctly.

➔ "4. Installing the FINE Cartridges" on page 2

For all other cases, refer to the **Online Manual**.

Setting Up the Printer

What device are you connecting?



Computer



Computer and
smartphone





Smartphone

5-a

Connecting to a Computer

If you are using multiple computers, perform these steps on each computer.



- 1 Access the Canon website from your computer.
 <https://ij.start.canon>
- 2 Select  **Set Up**.
- 3 Enter your printer's model name and click **Go**.
- 4 Click **Start**.
- 5 Click **(B) Connecting to a Computer/Smartphone**.
 - The following steps are for Windows users.
- 6 Click **Download**.
- 7 Run the downloaded file.
 - Follow the on-screen instructions.
 - These operations may take some time.
 - To connect to a smartphone as well, see "5-b. Connecting to a Smartphone" on page 5.



Using the Setup CD-ROM (E3400 series only)

Double click **EasySetup.exe** in the CD-ROM, and then continue from step 3. If you do not have an internet connection, open the **win** folder in the CD-ROM and double click **SETUP.exe**. This will install the printer driver.

5-b

Connecting to a Smartphone

If you are using multiple smartphones, perform these steps on each smartphone.



1 Install the "Canon PRINT Inkjet/SELPHY" app on your smartphone.

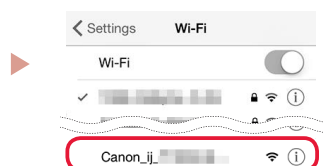


- Search for "Canon PRINT" in App Store, or Google Play.
- Access the Canon website to download the app.



2 Open your smartphone's Wi-Fi settings. Check that the network name (SSID) that starts with "Canon_ij_" appears.

(Example of iOS screen)



The network name (SSID) that starts with "Canon_ij_"

- If "Canon_ij_" appears → Proceed to step **3**.
- If "Canon_ij_" does not appear → Proceed to step **4**.

3 Tap the network name (SSID) that starts with "Canon_ij_".

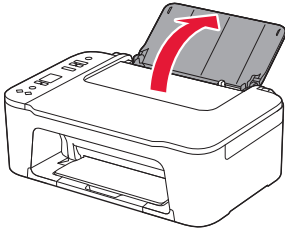
4 Open the installed app, and follow the on-screen instructions in the app to add your printer.



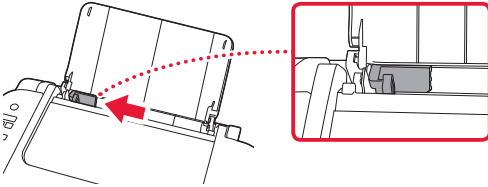
Once you have added your printer, you can print from your smartphone.
To print photos, see "Loading Paper" on page 6.

Loading Paper

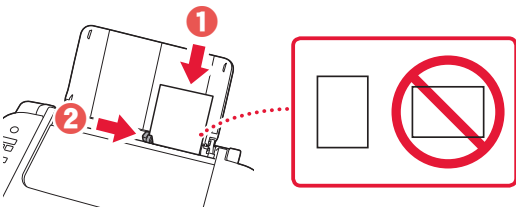
- 1 Open the paper support.



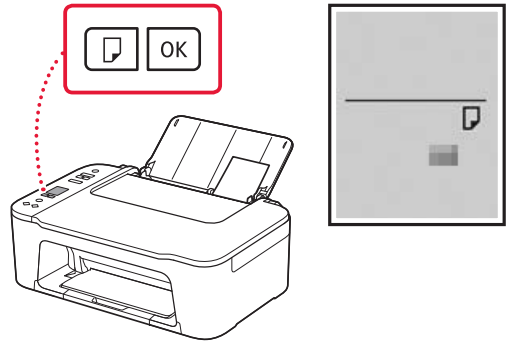
- 2 Slide the paper guide to the left.



- 3 Load several sheets of paper against the right edge with the print side facing up and align the paper guide to the width of the paper.



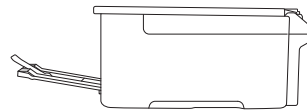
- 4 Press the **Paper Select** button, select a paper size, and then press the **OK** button.



- 5 Extend the paper output tray, and open the output tray extension.



- Look at it from the side to confirm it looks like the diagram.



If Print Results Are Unsatisfactory

Perform Print Head Alignment if straight lines are crooked or colors are inconsistent, or print results are otherwise not what you expected.

For details, click **Maintenance** on the **Online Manual** and refer to **If Printing Is Faint or Uneven > Aligning the Print Head**. Refer to the back cover for how to access the **Online Manual**.

■ Lines Are Misaligned



■ Uneven or Streaked Colors



การตั้งค่าเครื่องพิมพ์

สำหรับการตั้งค่า โปรดเยี่ยมชม URL ต่อไปนี้



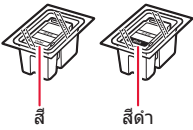
<https://ij.start.canon>

หรือสแกนรหัสด้วยอุปกรณ์มือถือของคุณ

• ปฏิบัติตามคำแนะนำด้านล่างหากคุณไม่ได้เชื่อมต่ออินเทอร์เน็ต

1. สิ่งที่อยู่ภายในกล่อง

• คาร์ทริด FINE



• สายไฟ

• Setup CD-ROM (E3400 series เท่านั้น)

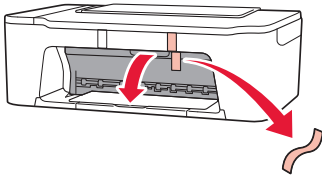
• ข้อมูลความปลอดภัยและสำคัญ

• คำแนะนำเริ่มต้น (คู่มือนี้)

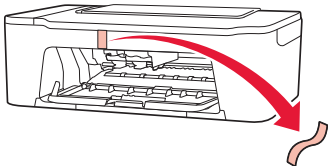
2. การเอาวัสดุห่อหุ้มออก



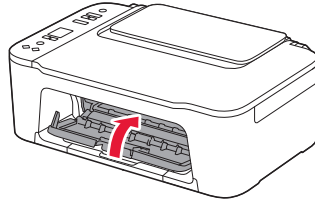
1 เอาเทปสีส้มทางด้านขวาออกและเปิดฝาครอบ



2 เอาเทปสีส้มทางด้านซ้ายออก



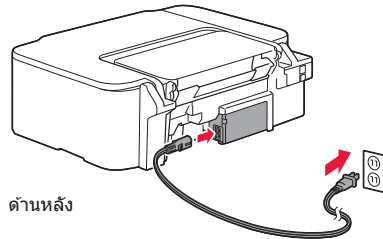
3 ปิดฝาครอบ



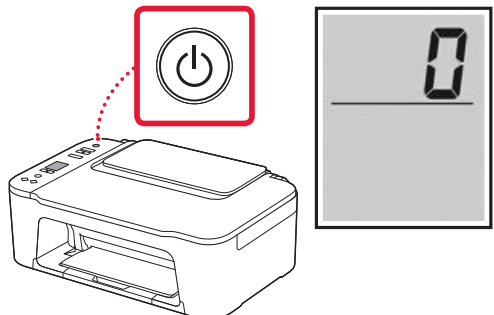
3. การเปิดเครื่องพิมพ์



1 เชื่อมต่อสายไฟ



2 กดปุ่ม พลังงาน



▶▶▶ **ข้อสำคัญ**

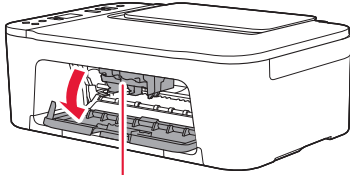
หากหน้าจออื่นปรากฏขึ้น โปรดดู "หากหน้าจอใดต่อไปนี้ปรากฏขึ้น" ในหน้า 3 และปฏิบัติตามคำแนะนำ

การตั้งค่าเครื่องพิมพ์

4. การติดตั้งคาร์ทริด FINE

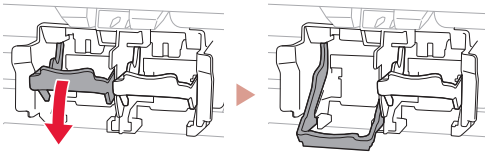


1 เปิดฝาครอบ

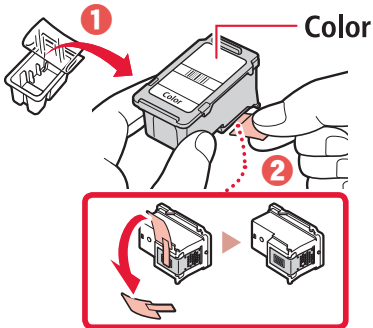


⚠ **ข้อควรระวัง**
อย่าสัมผัสตัวยึดคาร์ทริด FINE จนกว่าจะหยุดนิ่ง

2 กดคานโยกตัวล็อกคาร์ทริดหมึกทางด้านซ้ายมือลง

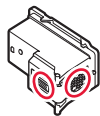


3 เอาคาร์ทริด FINE สีออกจากแพคเกจและเอาเทปป้องกันออก

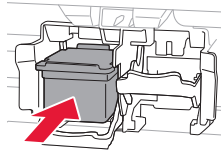


» **ข้อสำคัญ**

- อย่าสัมผัสหมึกบนเทปป้องกัน หมึกอาจเป็นมือหรือวัตถุที่อู้อรมๆ
- อย่าสัมผัสบริเวณที่แสดงในรูป มิฉะนั้นเครื่องพิมพ์อาจไม่สามารถพิมพ์ได้อย่างถูกต้อง

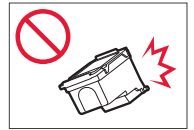


4 ใส่คาร์ทริด FINE สีเข้าไปในตัวยึดคาร์ทริด FINE

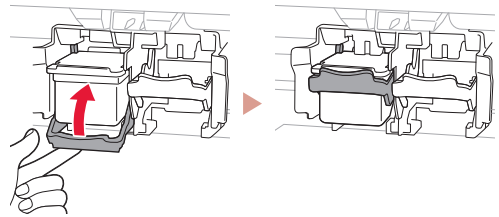


» **ข้อสำคัญ**

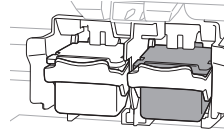
อย่ากระแทกคาร์ทริด FINE การทำเช่นนั้นอาจทำให้เกิดการทำงานผิดพลาด



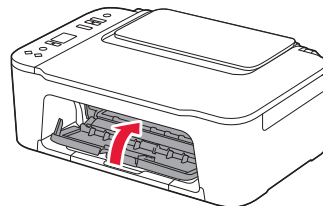
5 ยกคานโยกตัวล็อกคาร์ทริดหมึกขึ้น



6 ทำซ้ำขั้นตอนที่ 2 ถึง 5 เพื่อติดตั้งคาร์ทริด FINE สีดำทางด้านขวามือ



7 ปิดฝาครอบ



8 ตรวจสอบว่าหน้าจอต่อไปนี้ปรากฏขึ้น



»»» ข้อสำคัญ

หาก $E > 0 > 4$ ปรากฏขึ้นบนหน้าจอ โปรดดู "หากหน้าจอใดต่อไปนี้ปรากฏขึ้น" ในหน้า 3 และปฏิบัติตามคำแนะนำ

เลือกวิธีการเชื่อมต่อที่ตรงกับวิธีการใช้เครื่องพิมพ์ของคุณมากที่สุด

- การใช้เครื่องพิมพ์โดยไม่เชื่อมต่ออุปกรณ์อื่นใดๆ
 - ➔ การตั้งค่าเสร็จสมบูรณ์ในตอนนี้
- การใช้เครื่องพิมพ์ที่เชื่อมต่อกับคอมพิวเตอร์หรือสมาร์ทโฟน
 - ➔ ดำเนินการต่อในหน้าถัดไป



หากหน้าจอใดต่อไปนี้ปรากฏขึ้น



ตัวเลขหรือตัวอักษร

ตรวจสอบหน้าจอ จากนั้นปฏิบัติตามคำแนะนำที่เกี่ยวข้องด้านล่างนี้



ติดตั้งคาร์ทริด FINE

➔ "4. การติดตั้งคาร์ทริด FINE" ในหน้า 2



วัตถุป้องกันเหลืออยู่

➔ "2. การเอาวัสดุห่อหุ้มออก" ในหน้า 1



ไม่ได้ติดตั้งคาร์ทริด FINE อย่างถูกต้อง

➔ "4. การติดตั้งคาร์ทริด FINE" ในหน้า 2

สำหรับกรณีอื่นๆ ทั้งหมด โปรดดู คู่มือออนไลน์

การตั้งค่าเครื่องพิมพ์

คุณกำลังเชื่อมต่ออุปกรณ์ใด



คอมพิวเตอร์



คอมพิวเตอร์และ
สมาร์ทโฟน





สมาร์ทโฟน

5-a

การเชื่อมต่อกับคอมพิวเตอร์

หากคุณใช้คอมพิวเตอร์หลายเครื่อง ให้ทำตามขั้นตอนเหล่านี้ในคอมพิวเตอร์แต่ละเครื่อง



- 1 เข้าถึงเว็บไซต์ของ Canon จากคอมพิวเตอร์ของคุณ
 <https://ij.start.canon>
- 2 เลือก  **ตั้งค่า**
- 3 ป้อนชื่อรุ่นของเครื่องพิมพ์ของคุณและคลิก **ไป**
- 4 คลิก **เริ่ม**
- 5 คลิก **(B) การเชื่อมต่อกับคอมพิวเตอร์/สมาร์ทโฟน**
 - ขั้นตอนต่อไปนีสำหรับผู้ใช้งาน Windows
- 6 คลิก **ดาวน์โหลด**
- 7 เรียกใช้ไฟล์ที่ดาวน์โหลด
 - ปฏิบัติตามคำแนะนำบนหน้าจอ
 - การดำเนินการเหล่านี้อาจใช้เวลาสักครู่
 - หากต้องการเชื่อมต่อกับสมาร์ทโฟนด้วย โปรดดู "5-b. การเชื่อมต่อกับสมาร์ทโฟน" ในหน้า 5



การใช้ Setup CD-ROM (E3400 series เท่านั้น)

ดับเบิลคลิก **EasySetup.exe** ใน CD-ROM จากนั้นดำเนินการต่อจากขั้นตอนที่ 3 หากคุณไม่ได้เชื่อมต่ออินเทอร์เน็ต ให้เปิดโฟลเดอร์ **win** ใน CD-ROM และดับเบิลคลิก **SETUP.exe** ซึ่งจะเป็นการติดตั้งไดรเวอร์เครื่องพิมพ์

5-b

การเชื่อมต่อกับสมาร์ทโฟน

หากคุณใช้สมาร์ทโฟนหลายเครื่อง ให้ทำตามขั้นตอนเหล่านี้ในสมาร์ทโฟนแต่ละเครื่อง



1 ติดตั้งแอป "Canon PRINT Inkjet/SELPHY" ในสมาร์ทโฟนของคุณ

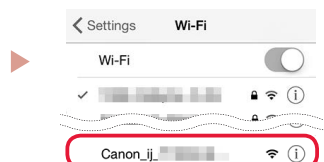


- ค้นหา "Canon PRINT" ใน App Store หรือ Google Play
- เข้าถึงเว็บไซต์ของ Canon เพื่อดาวน์โหลดแอป



2 เปิดการตั้งค่า Wi-Fi ของสมาร์ทโฟน ตรวจสอบว่าชื่อเครือข่าย (SSID) ที่ขึ้นต้นด้วย "Canon_ij_" ปรากฏขึ้น

(ตัวอย่างของหน้าจอ iOS)

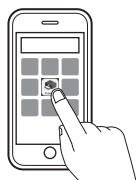


ชื่อเครือข่าย (SSID) ที่ขึ้นต้นด้วย "Canon_ij_"

- หาก "Canon_ij_" ปรากฏขึ้น → ดำเนินการต่อไปยังขั้นตอนที่ 3
- หาก "Canon_ij_" ไม่ปรากฏขึ้น → ดำเนินการต่อไปยังขั้นตอนที่ 4

3 แตะชื่อเครือข่าย (SSID) ที่ขึ้นต้นด้วย "Canon_ij_"

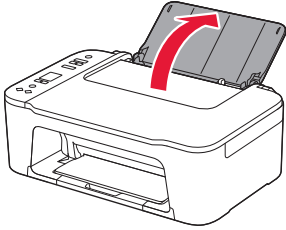
4 เปิดแอปที่ติดตั้ง และปฏิบัติตามคำแนะนำบนหน้าจอในแอปเพื่อเพิ่มเครื่องพิมพ์ของคุณ



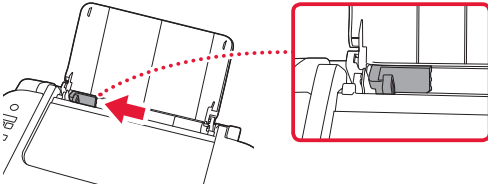
เมื่อคุณเพิ่มเครื่องพิมพ์ของคุณแล้ว คุณสามารถพิมพ์จากสมาร์ทโฟนของคุณได้
หากต้องการพิมพ์รูปถ่าย โปรดดู "การป้อนกระดาษ" ในหน้า 6

การป้อนกระดาษ

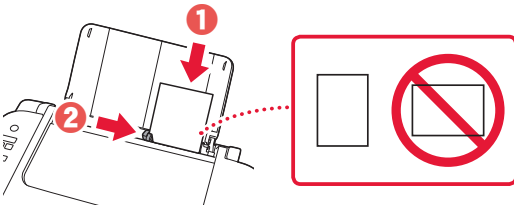
1 เปิดฐานรองกระดาษ



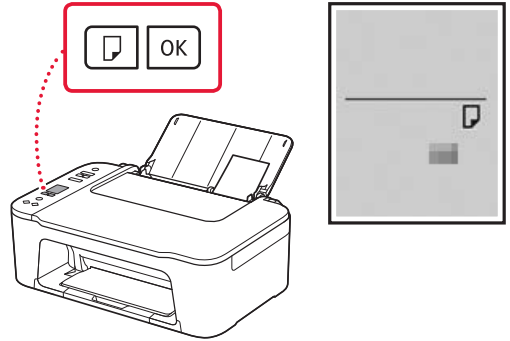
2 เลื่อนแถบกำหนดแนวกระดาษไปทางซ้าย



3 ป้อนกระดาษหลายแผ่นตามขอบด้านขวาโดยให้ด้านที่จะพิมพ์หงายขึ้น และจัดตำแหน่งแถบกำหนดแนวกระดาษตามความกว้างของกระดาษ



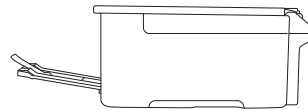
4 กดปุ่ม **เลือกกระดาษ** เลือกขนาดกระดาษ จากนั้นกดปุ่ม **OK**



5 ดึงเทรย์ออกกระดาษออกมา และเปิดส่วนขยายของเทรย์ออกกระดาษ



- ดึงที่กักกระดาษจากทางด้านข้างเพื่อให้แน่ใจว่ามีลักษณะเหมือนกับในรูปภาพ



หากผลการพิมพ์ไม่เป็นที่น่าพอใจ

ทำการจัดตำแหน่งหัวพิมพ์(Print Head Alignment) หากเส้นตรงมีความคดเคี้ยวหรือสีไม่สม่ำเสมอ หรือผลการพิมพ์เป็นอย่างอื่นซึ่งไม่ใช่สิ่งที่คุณคาดหวัง

สำหรับรายละเอียด ให้คลิก **การบำรุงรักษา** ใน **คู่มือออนไลน์** และดูที่ **หากการพิมพ์มีสีจางหรือไม่สม่ำเสมอ > การจัดตำแหน่งหัวพิมพ์**

โปรดดูที่ฝาครอบด้านหลังสำหรับวิธีการเข้าถึง **คู่มือออนไลน์**

■ เส้นไม่ตรง



■ สีไม่สม่ำเสมอหรือเป็นริ้ว



Mengeset Pencetak



Untuk Pengesetan, kunjungi URL

<https://ij.start.canon>

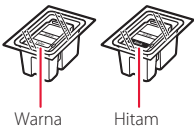


atau pindai kode dengan perangkat genggam Anda

• Ikuti instruksi di bawah ini jika Anda tidak memiliki koneksi internet.

1. Isi Kemasan

• Kartrij FINE



• Kabel Listrik

• Setup CD-ROM (hanya untuk E3400 series)

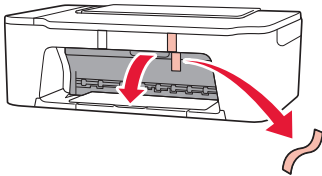
• Keamanan dan Informasi Penting

• Mari Memulai (petunjuk ini)

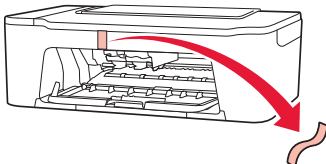
2. Melepaskan Material Kemasan



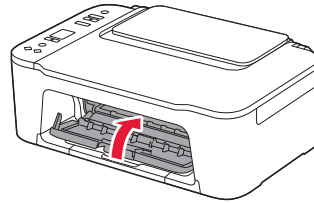
1 Lepaskan pita oranye di sebelah kanan dan buka penutup.



2 Lepaskan pita oranye di sebelah kiri.



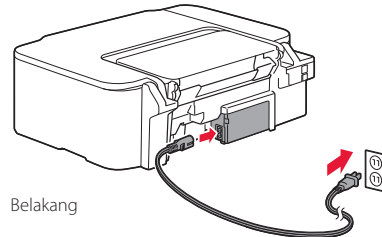
3 Tutup penutup.



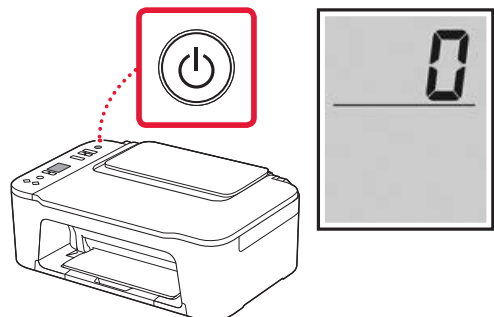
3. Menyalakan Pencetak



1 Hubungkan kabel listrik.



2 Tekan tombol **DAYA**.



▶▶▶ Penting

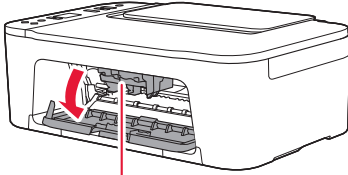
Jika muncul layar lain, lihat "Jika layar berikut ini muncul" pada halaman 3 dan ikuti instruksi.

Mengeset Pencetak

4. Memasang Kartrij FINE



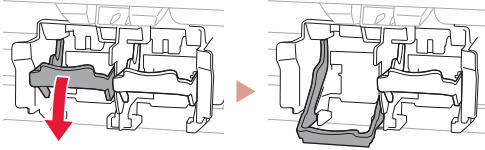
1 Buka penutup.



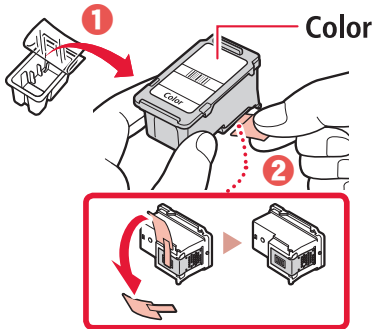
⚠ Perhatian

Jangan menyentuh penahan kartrij FINE sebelum berhenti bergerak.

2 Turunkan tuas pengunci kartrij tinta pada sisi kiri Anda.

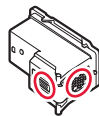


3 Keluarkan Kartrij FINE Warna dari kemasannya dan lepaskan pita pelindung.

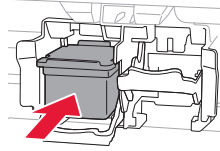


▶▶▶ Penting

- Jangan sentuh tinta pada pita pelindung. Menyentuhnya dapat menodai tangan Anda atau benda di sekitarnya.
- Jangan sentuh area yang ditunjukkan pada gambar. Jika disentuh, pencetak mungkin tidak dapat mencetak dengan benar.



4 Masukkan Kartrij FINE Warna ke dalam penahan kartrij FINE.

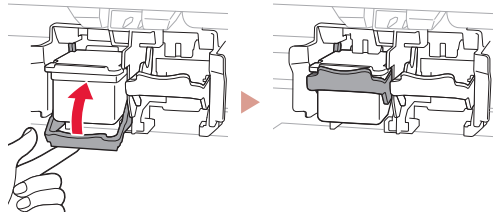


▶▶▶ Penting

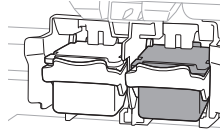
Jangan benturkan kartrij FINE. Hal tersebut dapat menyebabkan kegagalan fungsi.



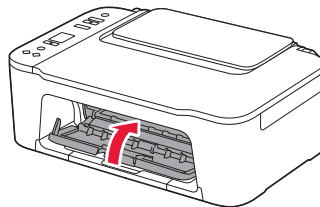
5 Naikkan tuas pengunci kartrij tinta.



6 Ulangi langkah 2 sampai 5 dan pasang Kartrij FINE Hitam di sebelah kanan.



7 Tutup penutup.



8 Periksa apakah layar berikut ini muncul.



▶▶▶ **Penting**

Jika E > 0 > 4 muncul pada layar, lihat "Jika layar berikut ini muncul" pada halaman 3 dan ikuti instruksi.

Pilih metode koneksi yang paling cocok dengan cara Anda menggunakan pencetak.

- Untuk menggunakan pencetak tanpa menghubungkan ke perangkat lain apa pun
 - ➔ Pengesetan kini telah selesai.
- Untuk menggunakan pencetak dengan menghubungkannya ke komputer atau ponsel pintar
 - ➔ Lanjutkan ke halaman berikutnya.



Jika layar berikut ini muncul



Angka atau huruf

Periksa layar, kemudian ikuti instruksi yang sesuai di bawah ini.



Pasang Kartrij FINE

- ➔ "4. Memasang Kartrij FINE" pada halaman 2



Material pelindung masih tertinggal.

- ➔ "2. Melepaskan Material Kemasan" pada halaman 1



Kartrij FINE tidak terpasang dengan benar.

- ➔ "4. Memasang Kartrij FINE" pada halaman 2

Untuk segala kasus lainnya, rujuk ke **Petunjuk Daring**.

Perangkat apa yang akan Anda hubungkan?



Komputer



Komputer dan
ponsel pintar





Ponsel pintar

5-a

Menghubungkan ke Komputer

Jika Anda menggunakan beberapa komputer, lakukan langkah-langkah berikut pada masing-masing komputer.



- 1 Akses situs web Canon dari komputer Anda.
 <https://ij.start.canon>
- 2 Pilih  **Mengeset**.
- 3 Masukkan nama model pencetak Anda dan klik **Buka**.
- 4 Klik **Mulai**.
- 5 Klik **(B) Menghubungkan ke Komputer/Ponsel Pintar**.
 - Langkah-langkah berikut ini adalah untuk pengguna Windows.
- 6 Klik **Unduh**.
- 7 Jalankan berkas yang diunduh.
 - Ikuti instruksi pada layar.
 - Operasi ini mungkin membutuhkan waktu beberapa saat.
 - Untuk menghubungkan ke ponsel pintar, lihat "5-b. Menghubungkan ke Ponsel Pintar" pada halaman 5.



Menggunakan Setup CD-ROM (hanya untuk E3400 series)

Klik dua kali **EasySetup.exe** dalam CD-ROM, kemudian lanjutkan dari langkah 3. Jika Anda tidak memiliki koneksi internet, buka folder **win** dalam CD-ROM dan klik dua kali **SETUP.exe**. Ini akan menginstal pengandar pencetak.

5-b

Menghubungkan ke Ponsel Pintar

Jika Anda menggunakan beberapa ponsel pintar, lakukan langkah-langkah berikut pada masing-masing ponsel pintar.



1 Instal aplikasi "Canon PRINT Inkjet/SELPHY" pada ponsel pintar Anda.



- Cari "Canon PRINT" di App Store, atau Google Play.
- Akses situs web Canon untuk mengunduh aplikasi.



2 Buka setelan Wi-Fi pada ponsel pintar Anda. Periksa apakah nama jaringan (SSID) yang dimulai dengan "Canon_ij_" muncul.

(Contoh layar iOS)



Nama jaringan (SSID) yang dimulai dengan "Canon_ij_"

- Jika "Canon_ij_" muncul → Lanjutkan ke langkah **3**.
- Jika "Canon_ij_" tidak muncul → Lanjutkan ke langkah **4**.

3 Ketuk nama jaringan (SSID) yang dimulai dengan "Canon_ij_".

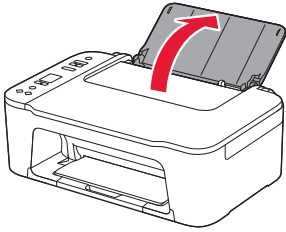
4 Buka aplikasi yang telah diinstal, dan ikuti instruksi pada layar aplikasi untuk menambahkan pencetak Anda.



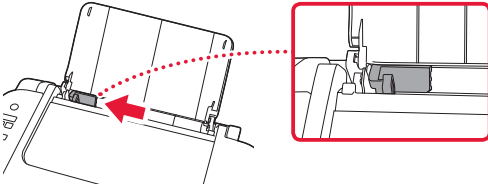
Setelah menambahkan pencetak, Anda dapat mencetak dari ponsel pintar.
Untuk mencetak foto, lihat "Memuatkan Kertas" pada halaman 6.

Memuatkan Kertas

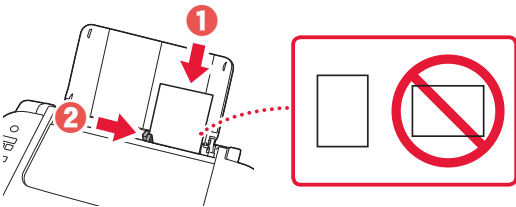
1 Buka pendukung kertas.



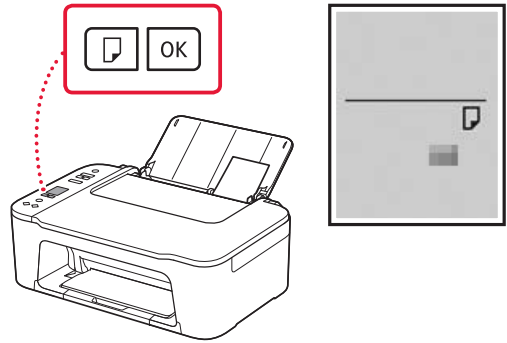
2 Geser pemandu kertas ke kiri.



3 Muatkan beberapa lembar kertas merapat pada sisi kanan dengan sisi cetak menghadap ke atas dan paskan pemandu kertas sesuai dengan lebar kertas.



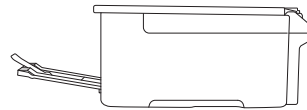
4 Tekan tombol **Pilihan Kertas**, pilih ukuran kertas, kemudian tekan tombol **OK**.



5 Tarik keluar tatakan keluaran kertas, dan buka perpanjangan tatakan keluaran.



• Lihat dari samping untuk memastikan apakah tampak sama dengan gambar.



Jika Hasil Cetakan Tidak Memuaskan

Lakukan Penjajaran Kepala Cetak(Print Head Alignment) jika garis tidak lurus atau warna tidak konsisten, atau hasil cetakan tidak sesuai dengan yang Anda harapkan.

Untuk detail, klik **Perawatan** pada **Petunjuk Daring** dan rujuk ke bagian **Jika Pencetakan Kabur atau Tidak Rata > Menjajarkan Kepala Cetak**.

Rujuk ke sampul belakang untuk cara mengakses **Petunjuk Daring**.

■ Garis Tidak Sejajar



■ Warna Tidak Rata atau Tercoreng



Thiết lập máy in



Để tìm hiểu quá trình thiết lập, truy cập URL

<https://ij.start.canon>

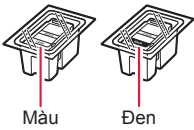


hoặc quét mã bằng thiết bị di động.

• Thực hiện theo hướng dẫn sau đây nếu bạn không có kết nối internet.

1. Thành phần hộp

• Hộp mực FINE



• Dây nguồn

• CD-ROM cài đặt (Chỉ dành cho E3400 series)

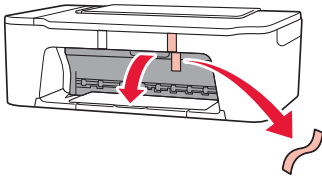
• Thông tin an toàn và quan trọng

• Hướng dẫn bắt đầu (hướng dẫn sử dụng này)

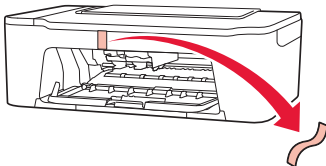
2. Tháo vật liệu đóng gói



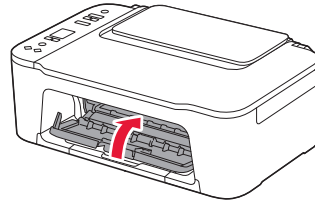
1 Tháo băng dính màu cam ở bên phải và mở nắp.



2 Tháo băng dính màu cam ở bên trái.



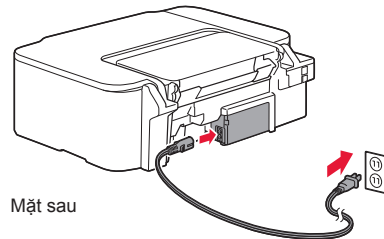
3 Đóng nắp.



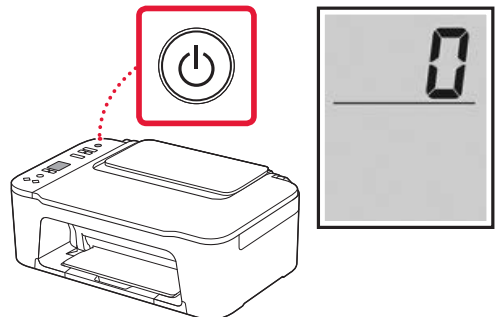
3. Bật máy in



1 Kết nối dây nguồn.



2 Nhấn nút **BẬT**.



Quan trọng

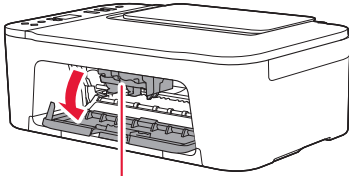
Nếu màn hình khác xuất hiện, tham khảo phần "Nếu bất kỳ màn hình nào sau đây xuất hiện" ở trang 3 và thực hiện theo hướng dẫn.

Thiết lập máy in

4. Lắp Hộp mực FINE



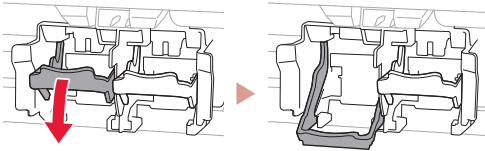
1 Mở nắp.



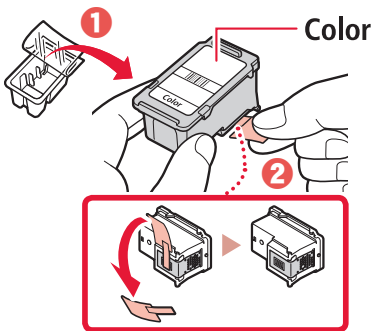
⚠️ Chú ý

Không chạm vào khay chứa hộp mực FINE cho đến khi khay dừng chuyển động.

2 Hạ cần gạt khóa hộp mực ở bên trái xuống.

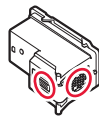


3 Tháo hộp mực FINE Màu khỏi bao bì và tháo băng bảo vệ.

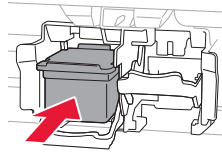


⚠️ Quan trọng

- Không chạm vào mực trên băng bảo vệ. Mực có thể làm bẩn tay hoặc các vật xung quanh.
- Không chạm vào khu vực hiển thị trong hình. Nếu không, máy in có thể in không chính xác.



4 Lắp hộp mực FINE Màu trong khay chứa hộp mực FINE.

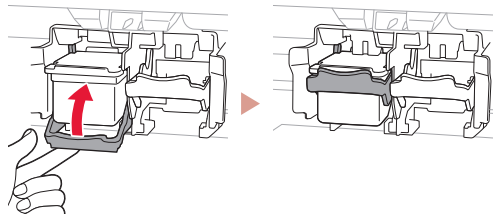


⚠️ Quan trọng

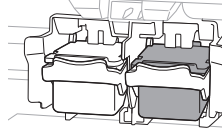
Không đập mạnh hộp mực FINE. Làm như vậy có thể gây hỏng máy.



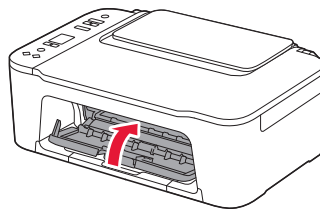
5 Nâng cần gạt khóa hộp mực lên.



6 Lắp lại các bước 2 đến 5 và lắp hộp mực FINE Đen ở bên phải.



7 Đóng nắp.



- 8 Xác nhận rằng màn hình sau đây đã xuất hiện.



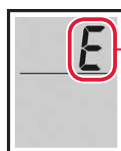
»»» **Quan trọng**

Nếu E > 0 > 4 xuất hiện trên màn hình, tham khảo phần "Nếu bất kỳ màn hình nào sau đây xuất hiện" ở trang 3 và thực hiện theo hướng dẫn.

Chọn phương thức kết nối phù hợp với cách sử dụng máy in nhất.

- **Để sử dụng máy in mà không kết nối với bất kỳ thiết bị nào khác**
→ Thiết lập đã hoàn tất.
- **Để sử dụng máy in bằng cách kết nối với máy tính hoặc smartphone**
→ Chuyển sang trang tiếp theo.

? Nếu bất kỳ màn hình nào sau đây xuất hiện



Số hoặc chữ cái

Kiểm tra màn hình, rồi thực hiện theo hướng dẫn tương ứng dưới đây.



Lắp hộp mực FINE.

→ "4. Lắp Hộp mực FINE" ở trang 2



Vẫn còn vật liệu bảo vệ.

→ "2. Tháo vật liệu đóng gói" ở trang 1



Hộp mực FINE chưa được lắp đúng cách.

→ "4. Lắp Hộp mực FINE" ở trang 2

Để tìm hiểu về tất cả các trường hợp khác, tham khảo **Hướng dẫn sử dụng trực tuyến**.

Thiết lập máy in

Bạn đang kết nối với thiết bị nào?



Máy tính



Máy tính và
smartphone





Smartphone

5-a

Kết nối với máy tính

Nếu bạn sử dụng nhiều máy tính, thực hiện các bước này trên từng máy tính.



- 1 Truy cập trang web của Canon từ máy tính.
 <https://ij.start.canon>
- 2 Chọn  **Thiết lập**.
- 3 Nhập tên model của máy in và nhấp vào **Đi đến**.
- 4 Nhấp vào **Bắt đầu**.
- 5 Nhấp vào **(B) Kết nối với máy tính/smartphone**.
 - Các bước sau dành cho người dùng Windows.
- 6 Nhấp vào **Tải xuống**.
- 7 Chạy tệp đã tải xuống.
 - Thực hiện theo hướng dẫn trên màn hình.
 - Những thao tác này có thể mất một khoảng thời gian.
 - Để kết nối với smartphone, xem phần "5-b. Kết nối với smartphone" ở trang 5.



Sử dụng CD-ROM cài đặt (Chỉ dành cho E3400 series)

Nhấp đúp vào **EasySetup.exe** trong CD-ROM, rồi tiếp tục từ bước 3. Nếu bạn không có kết nối internet, hãy mở tệp **win** trong CD-ROM và nhấp đúp vào **SETUP.exe**. Thao tác này sẽ cài đặt trình điều khiển máy in.

5-b

Kết nối với smartphone

Nếu bạn sử dụng nhiều smartphone, thực hiện các bước này trên từng smartphone.



1 Cài đặt ứng dụng "Canon PRINT Inkjet/SELPHY" trên smartphone.



- Tìm kiếm "Canon PRINT" trong App Store hoặc Google Play.
- Truy cập trang web Canon để tải xuống ứng dụng.



2 Mở cài đặt Wi-Fi trên smartphone. Xác nhận rằng tên mạng (SSID) bắt đầu với "Canon_ij_" xuất hiện.

(Ví dụ về màn hình iOS)

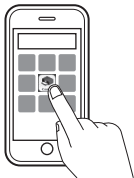


Tên mạng (SSID) bắt đầu với "Canon_ij_".

- Nếu "Canon_ij_" xuất hiện → Chuyển sang bước 3.
- Nếu "Canon_ij_" không xuất hiện → Chuyển sang bước 4.

3 Gõ nhẹ vào tên mạng (SSID) bắt đầu với "Canon_ij_".

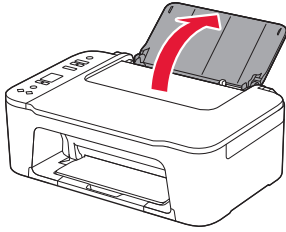
4 Mở ứng dụng đã cài đặt và thực hiện theo hướng dẫn trên màn hình trong ứng dụng để thêm máy in.



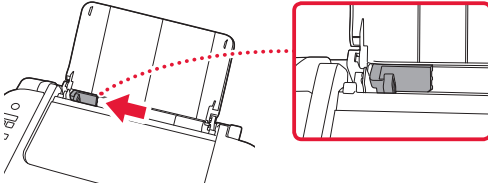
Sau khi thêm máy in, bạn có thể in từ smartphone của mình.
Để in ảnh, xem phần "Nạp giấy" ở trang 6.

Nạp giấy

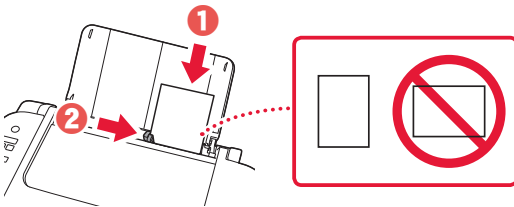
1 Mở giá đỡ giấy.



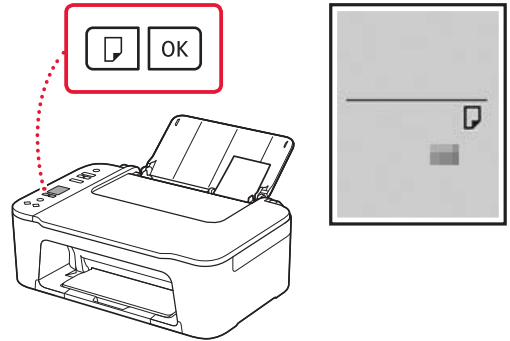
2 Trượt thanh dẫn giấy sang bên trái.



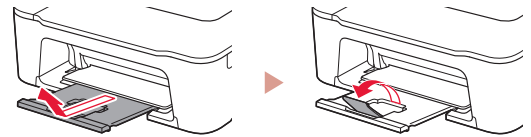
3 Nạp một vài tờ giấy theo cạnh phải với mặt in hướng lên trên và căn chỉnh thanh dẫn giấy theo chiều rộng của giấy.



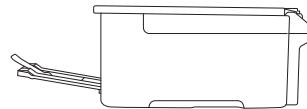
4 Nhấn nút **Chọn giấy**, chọn cỡ giấy rồi nhấn nút **OK**.



5 Mở rộng khay giấy ra và mở phần mở rộng khay giấy ra.



- Nhìn từ phía bên cạnh để xác nhận cát-xét được đặt như hình minh họa.



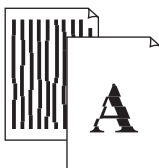
Nếu kết quả in không đạt yêu cầu

Thực hiện Căn chỉnh đầu in(Print Head Alignment) nếu đường thẳng bị cong hoặc màu không đồng nhất, hoặc kết quả in không như mong muốn.

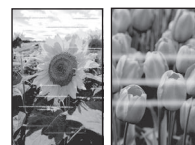
Để tìm hiểu chi tiết, nhấp vào **Bảo trì** trên **Hướng dẫn sử dụng trực tuyến** và tham khảo phần **Nếu in bị mờ hoặc không đều > Căn chỉnh đầu in**.

Tham khảo trang bìa sau để tìm hiểu cách truy cập **Hướng dẫn sử dụng trực tuyến**.

■ Đường nét bị lệch



■ Màu không đều hoặc có sọc



設定印表機



請瀏覽以下URL進行設定

<https://ij.start.canon>

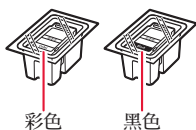


或使用您的行動裝置掃描代碼

●如果未連接到網際網路，請按照以下說明進行操作。

1. 包裝箱內的物品

● FINE墨水匣



● 電源線

● 安裝光碟(僅E3400 series)

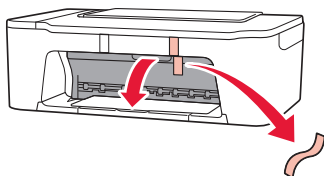
● 安全與重要資訊

● 入門指南(本手冊)

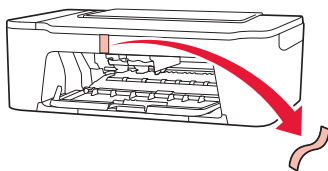
2. 移除包裝材料



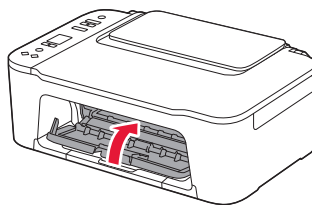
1 移除右側的橙色膠帶並開啟機蓋。



2 移除左側的橙色膠帶。



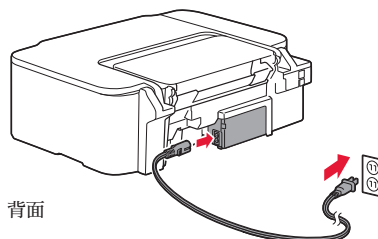
3 關閉機蓋。



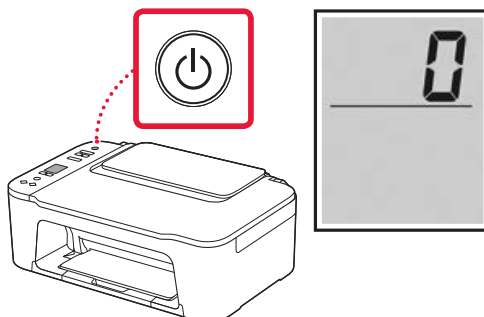
3. 開啟印表機



1 連接電源線。



2 按電源按鈕。



重要事項

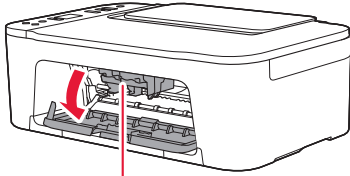
如果顯示其他螢幕，請參見第3頁的「如果顯示以下任意螢幕」並按照說明進行操作。

設定印表機

4. 安裝FINE 墨水匣



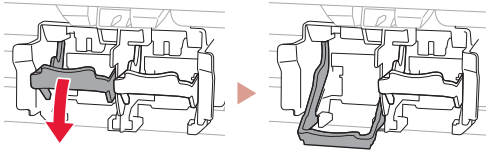
1 開啟機蓋。



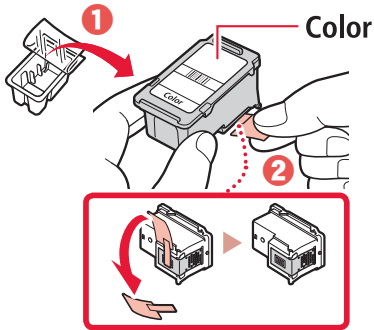
▲ 注意

FINE 墨水匣固定座停止移動前請勿觸摸。

2 放下左側的墨水匣鎖定桿。

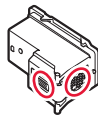


3 從包裝盒中取出彩色FINE 墨水匣並移除保護膠帶。

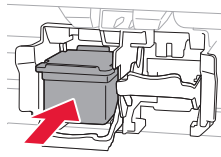


▶▶▶ 重要事項

- 請勿觸摸保護膠帶上的墨水。否則會弄髒手或周圍的物件。
- 請勿觸摸圖中所示的區域。否則印表機可能無法正確列印。



4 將彩色FINE 墨水匣插入FINE 墨水匣固定座中。

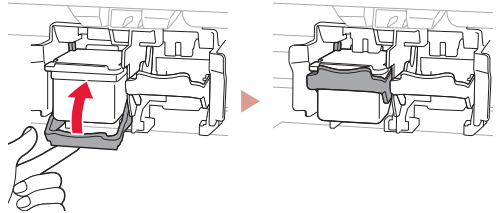


▶▶▶ 重要事項

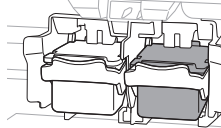
請勿碰撞FINE 墨水匣。否則可能造成故障。



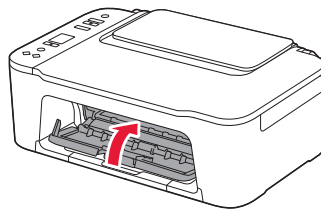
5 抬起墨水匣鎖定桿。



6 重複步驟2到5，將黑色FINE 墨水匣安裝到右側。



7 關閉機蓋。



8 確認顯示以下螢幕。



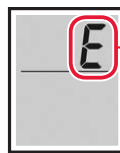
重要事項

如果螢幕上顯示E > 0 > 4，請參見第3頁的「如果顯示以下任意螢幕」並按照說明進行操作。

選擇最適合於您印表機使用方式的連接方法。

- 若要在不連接其他任何裝置的情況下使用印表機
➔ 設定現已完成。
- 若要連接電腦或智慧型手機來使用印表機
➔ 繼續執行下一頁。

? 如果顯示以下任意螢幕



數字或字母

查看螢幕，然後按照以下相關說明進行操作。



安裝FINE 墨水匣。

➔ 第2頁的「4. 安裝FINE 墨水匣」



有未取下的保護材料。

➔ 第1頁的「2. 移除包裝材料」



未正確安裝FINE 墨水匣。

➔ 第2頁的「4. 安裝FINE 墨水匣」

對於所有其他情況，請參閱線上手冊。

設定印表機

想要連接何種裝置？



電腦



電腦和智慧型手機



智慧型手機

5-a

連接到電腦

如果使用多台電腦，請在每台電腦上執行以下步驟。



- 1 從電腦存取Canon網站。
 <https://ij.start.canon>
- 2 選擇  設定。
- 3 輸入印表機型號名稱並按一下前往。
- 4 按一下開始。
- 5 按一下(B) 連接到電腦/智慧型手機。
 - 以下步驟適用於Windows使用者。
- 6 按一下下載。
- 7 執行下載的檔案。
 - 按照螢幕上的說明進行操作。
 - 此操作可能需要一些時間。
 - 如還要連接到智慧型手機，請參見第5頁的「5-b. 連接到智慧型手機」。



使用安裝光碟(僅E3400 series)

按兩下光碟中的**EasySetup.exe**，然後從步驟3開始繼續操作。如果未連接到網際網路，請開啟光碟中的**win**資料夾，按兩下**SETUP.exe**。這將會安裝印表機驅動程式。

5-b

連接到智慧型手機

如果使用多部智慧型手機，請在每部智慧型手機上執行以下步驟。



1 在智慧型手機上安裝應用程式「Canon PRINT Inkjet/SELPHY」。

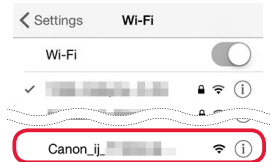


- 在App Store或Google Play中搜尋「Canon PRINT」。
- 存取Canon網站以下載應用程式。



2 開啟智慧型手機的Wi-Fi設定。檢查以「Canon_ij_」開頭的網路名稱(SSID)是否出現。

(iOS 螢幕示例)



以「Canon_ij_」開頭的網路名稱(SSID)

- 如果「Canon_ij_」出現 → 請繼續執行步驟3。
- 如果「Canon_ij_」未出現 → 請繼續執行步驟4。

3 點選以「Canon_ij_」開頭的網路名稱(SSID)。

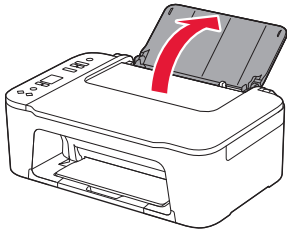
4 開啟安裝的應用程式，然後按照應用程式螢幕上的說明新增印表機。



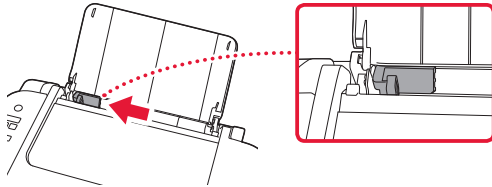
新增印表機後，可以從智慧型手機進行列印。
要列印相片，請參見第6頁的「裝入紙張」。

裝入紙張

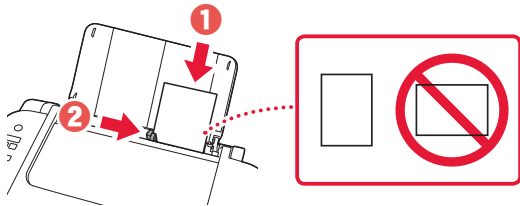
1 開啟托紙架。



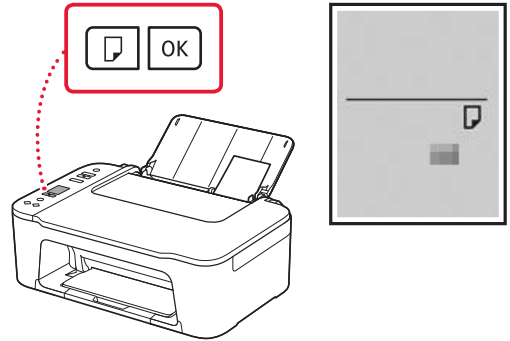
2 移動紙張導引器到左側。



3 沿右邊緣將列印面向上裝入幾張紙，然後使紙張導引器適合紙張寬度。



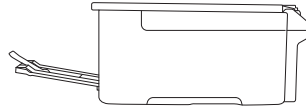
4 按**紙張選擇**按鈕選擇紙張大小，然後按**OK**按鈕。



5 展開出紙托盤，並開啟出紙托盤擴展架。



● 從側面觀察，確認其看起來是否如圖所示。



如果列印效果不理想

如果直線歪斜或顏色不一致，或列印效果未如預期，請執行列印頭校準(Print Head Alignment)。關於詳細資訊，請按一下**線上手冊**上的**維護**，並參閱**如果列印模糊不清或不均勻 > 校準列印頭**。請參閱封底，了解如何存取**線上手冊**。

■ 線條未對齊



■ 顏色不均勻或有條紋



프린터 설정하기



설정에 대한 내용은 아래 URL을 방문하십시오.

<https://ij.start.canon>

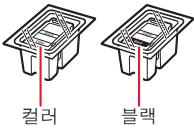


또는, 모바일 장치로 코드를 스캔하십시오.

●인터넷 연결이 없는 경우에는 아래 설명을 따르십시오.

1. 상자 내용물

●FINE 카트리지



ciano

black

●전원 코드

●Setup CD-ROM(E3400 series만 해당)

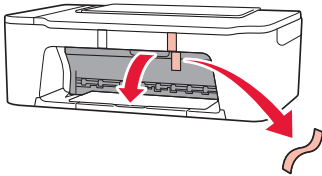
●안전 및 중요 정보

●입문 가이드(본 설명서)

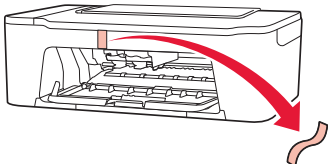
2. 포장 재료 제거하기



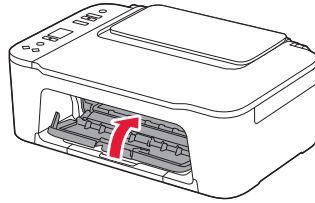
1 오른쪽의 오렌지색 테이프를 제거하고 커버를 엽니다.



2 왼쪽의 오렌지색 테이프를 제거합니다.



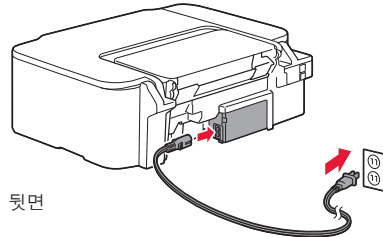
3 커버를 닫습니다.



3. 프린터 켜기

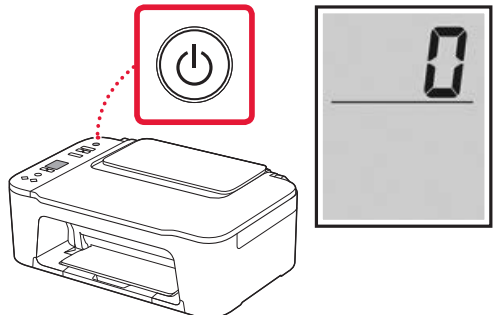


1 전원 코드를 연결합니다.



뒷면

2 전원(ON) 버튼을 누릅니다.



▶▶▶ 중요

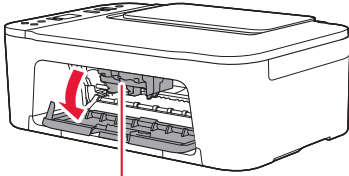
다른 화면이 나타나는 경우 3페이지의 "다음 화면 중 하나가 나타나는 경우"를 참조하여 설명을 따르십시오.

프린터 설정하기

4. FINE 카트리지 설치하기

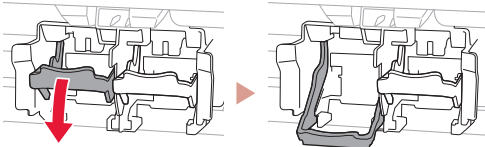


1 커버를 엽니다.

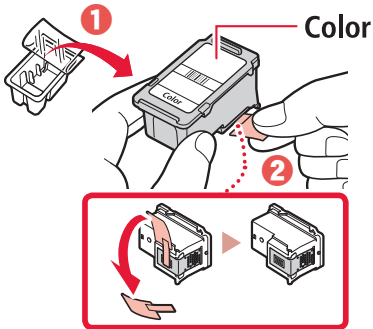


▲ 주의
FINE 카트리지 홀더가 이동을 멈출 때까지 만지지 마십시오.

2 왼쪽의 잉크 카트리지 잠금 레버를 내립니다.

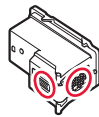


3 컬러 FINE 카트리지를 포장에서 꺼내어 보호 테이프를 제거합니다.

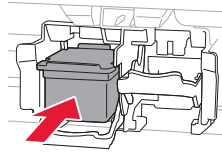


▶▶▶ 중요

- 보호 테이프의 잉크에 닿지 않도록 하십시오. 손이나 주변 물체가 더러워질 수 있습니다.
- 그림에 표시된 부분을 만지지 마십시오. 만질 경우 프린터가 올바르게 인쇄하지 못할 수 있습니다.



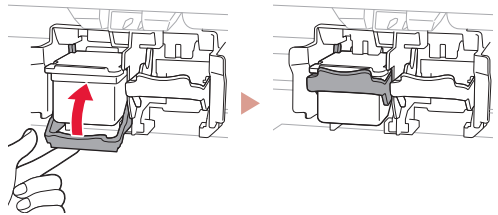
4 컬러 FINE 카트리지를 FINE 카트리지 홀더에 삽입합니다.



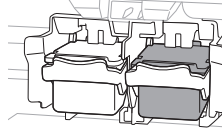
▶▶▶ 중요
FINE 카트리지가 부딪히지 않게 하십시오. 부딪히면 고장 날 수 있습니다.



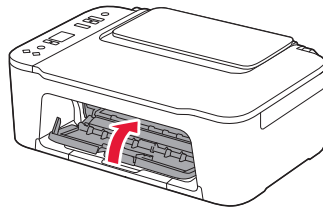
5 잉크 카트리지 잠금 레버를 올립니다.



6 2~5단계를 반복하여 블랙 FINE 카트리지를 오른쪽에 설치합니다.



7 커버를 닫습니다.



8 다음 화면이 나타나는지 확인합니다.



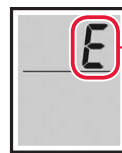
중요

화면에 E > 0 > 4 오류가 나타나는 경우 3페이지의 "다음 화면 중 하나가 나타나는 경우"를 참조하여 설명을 따르십시오.

프린터의 사용 방법에 가장 적합한 연결 방법을 선택합니다.

- 프린터를 다른 장치에 연결하지 않고 사용하려면
➔ 설정이 완료되었습니다.
- 프린터를 컴퓨터 또는 스마트폰에 연결하여 사용하려면
➔ 다음 페이지로 이동하십시오.

? 다음 화면 중 하나가 나타나는 경우



숫자 또는 문자

화면을 확인한 다음 아래 해당 설명을 따르십시오.



FINE 카트리지 설치하십시오.

- ➔ 2페이지의 "4. FINE 카트리지 설치하기"



보호 재료가 남아 있습니다.

- ➔ 1페이지의 "2. 포장 재료 제거하기"



FINE 카트리지가 제대로 설치되지 않았습니다.

- ➔ 2페이지의 "4. FINE 카트리지 설치하기"

기타 모든 경우에 대한 내용은 온라인 설명서를 참조하십시오.

프린터 설정하기

어떤 장치를 연결하려고 합니까?



컴퓨터



컴퓨터 및
스마트폰



스마트폰

5-a

컴퓨터에 연결하기

여러 컴퓨터를 사용하는 경우 각 컴퓨터에서 아래의 단계를 수행하십시오.



- 1 컴퓨터에서 Canon 웹 사이트에 액세스합니다.
 <https://ij.start.canon>
- 2  **설정**을 선택합니다.
- 3 프린터의 모델 이름을 입력하고 **이동**을 클릭합니다.
- 4 **시작**을 클릭합니다.
- 5 **(B) 컴퓨터/스마트폰에 연결하기**를 클릭합니다.
 - 다음 단계는 Windows 사용자를 대상으로 합니다.
- 6 **다운로드**를 클릭합니다.
- 7 다운로드한 파일을 실행합니다.
 - 화면의 설명을 따릅니다.
 - 이 작업을 완료하는 데 약간의 시간이 소요될 수 있습니다.
 - 스마트폰에도 연결하려면 5페이지의 "5-b. 스마트폰에 연결하기"를 참조하십시오.



Setup CD-ROM 사용하기(E3400 series만 해당)

CD-ROM에서 **EasySetup.exe**를 더블 클릭한 다음 3단계부터 계속합니다. 인터넷 연결이 없는 경우에는 CD-ROM에서 **win** 폴더를 열고 **SETUP.exe**를 더블 클릭하십시오. 프린터 드라이버가 설치됩니다.

5-b

스마트폰에 연결하기

여러 스마트폰을 사용하는 경우 각 스마트폰에서 아래의 단계를 수행하십시오.



1 스마트폰에 "Canon PRINT Inkjet/SELPHY" 앱을 설치합니다.

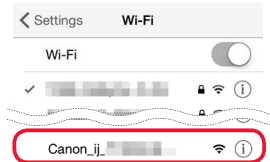


- App Store 또는 Google Play에서 "Canon PRINT"를 검색합니다.
- Canon 웹 사이트에 액세스하여 앱을 다운로드합니다.



2 스마트폰의 Wi-Fi 설정을 엽니다. "Canon_ij_"로 시작하는 네트워크 이름(SSID)이 나타나는지 확인합니다.

(iOS 화면의 예)

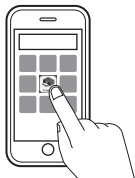


"Canon_ij_"로 시작하는 네트워크 이름(SSID)

- "Canon_ij_"가 나타나는 경우 → 3단계로 이동하십시오.
- "Canon_ij_"가 나타나지 않는 경우 → 4단계로 이동하십시오.

3 "Canon_ij_"로 시작하는 네트워크 이름(SSID)을 탭합니다.

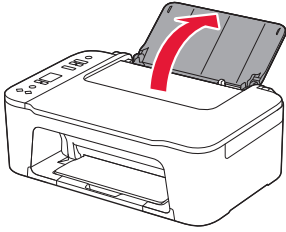
4 설치한 앱을 열고 앱 화면의 설명에 따라 프린터를 추가합니다.



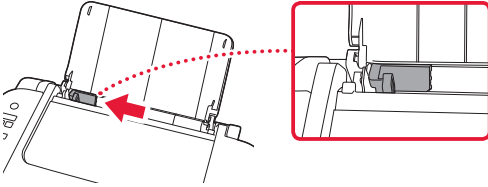
프린터를 추가한 후 스마트폰에서 인쇄할 수 있습니다.
사진을 인쇄하려면 6페이지의 "용지 로드하기"를 참조하십시오.

용지 로드하기

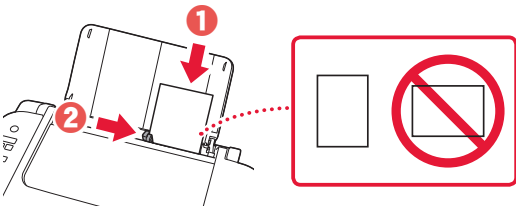
1 용지 받침대를 엽니다.



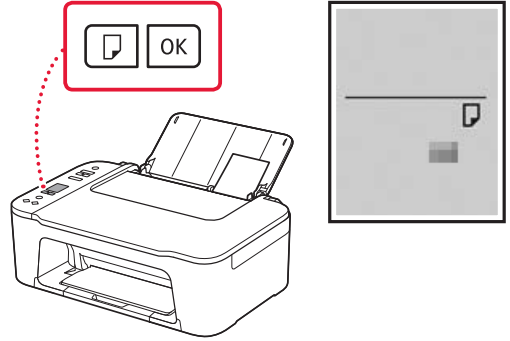
2 용지 가이드를 왼쪽으로 밀니다.



3 여러 장의 용지를 인쇄면이 위로 향하게 하여 오른쪽 가장자리에 맞게 로드하고 측면의 용지 가이드를 용지 너비에 맞춥니다.



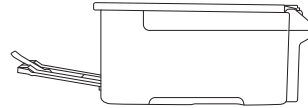
4 용지 선택(Paper Select) 버튼을 누르고 용지 크기를 선택한 다음 OK 버튼을 누릅니다.



5 용지 출력 트레이를 펼치고 연장 출력 트레이를 엽니다.



● 그림과 같은지 측면에서 확인하십시오.



인쇄 결과가 만족스럽지 못한 경우

직선이 비뚤게 인쇄되거나 색상이 일치하지 않는 경우 또는 인쇄 결과가 예상과 다른 경우, 프린트 헤드 정렬(Print Head Alignment)을 수행하십시오.

자세한 내용은 [온라인 설명서](#)에서 [유지 관리](#)를 클릭하여 [희미하거나 균일하지 않게 인쇄되는 경우 > 프린트 헤드 정렬하기](#)를 참조하십시오.

[온라인 설명서](#)를 여는 방법은 뒤 표지를 참조하십시오.

■ 선이 비뚤어지는 경우



■ 컬러가 균일하지 않거나 선이 나타나는 경우



Trademarks

- Windows is a trademark or registered trademark of Microsoft Corporation in the U.S. and/or other countries.
- App Store is a trademark of Apple Inc., registered in the U.S. and other countries.
- Google Play is a registered trademark of Google LLC.

เครื่องหมายการค้า

- Windows เป็นเครื่องหมายการค้าหรือเครื่องหมายการค้าจดทะเบียนของ Microsoft Corporation ใน U.S. และ/หรือประเทศอื่นๆ
- App Store เป็นเครื่องหมายการค้าของ Apple Inc. ซึ่งจดทะเบียนใน U.S. และประเทศอื่นๆ
- Google Play เป็นเครื่องหมายการค้าจดทะเบียนของ Google LLC.

Merek Dagang

- Windows adalah merek dagang atau merek dagang terdaftar Microsoft Corporation di U.S. dan/atau negara-negara lainnya.
- App Store adalah merek dagang dari Apple Inc., yang terdaftar di U.S. dan negara-negara lainnya.
- Google Play adalah merek dagang dari Google LLC.

Thương hiệu

- Windows là thương hiệu thuộc quyền hoặc thương hiệu đã đăng ký của Microsoft Corporation tại U.S. và/hoặc các quốc gia khác.
- App Store là thương hiệu của Apple Inc. đã đăng ký tại U.S. và các quốc gia khác.
- Google Play là thương hiệu đã đăng ký của Google LLC.

商標

- Windows是Microsoft Corporation在美國和/或其他國家/地區的商標或註冊商標。
- App Store是Apple Inc.在美國和其他國家/地區註冊的商標。
- Google Play是Google LLC.的註冊商標。

상표

- Windows는 U.S. 및/또는 기타 국가에서 Microsoft Corporation의 상표 또는 등록 상표입니다.
- App Store는 U.S. 및 기타 국가에서 등록된 Apple Inc.의 상표입니다.
- Google Play는 Google LLC.의 상표입니다.



Access Online Manual

Akses Petunjuk Daring

存取線上手冊

เข้าถึงคู่มือออนไลน์

Truy cập Hướng dẫn sử dụng trực tuyến

온라인 설명서에 액세스

From your browser

จากเบราว์เซอร์ของคุณ

Dari browser Anda

Từ trình duyệt của bạn

從瀏覽器

브라우저에서

