

msi™ Wind Top Series

iZ3D Quick Start Guide

www.msi.com

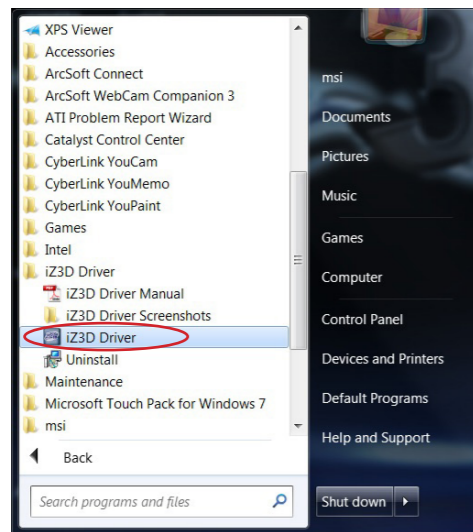
Search

G52-AE312X5

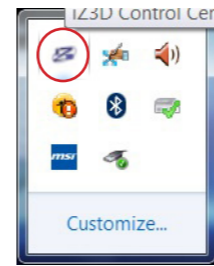
The iZ3D Driver is a software to set up 3D rendering pipelines to generate two views - left and right - and present them using S3D Shutter technology on a monitor.

ACTIVATING THE iZ3D

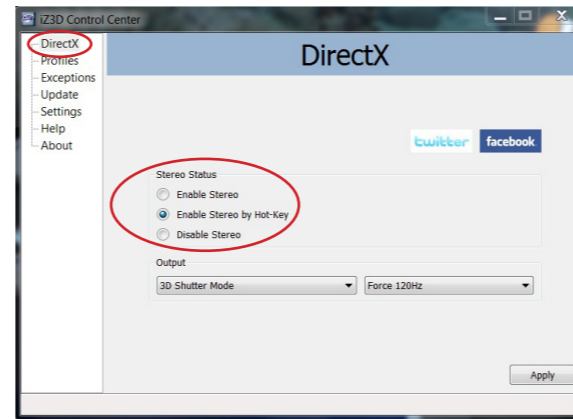
1. Locate the iZ3D Driver on the Windows Start menu. Select the iZ3D Driver to activate the program.



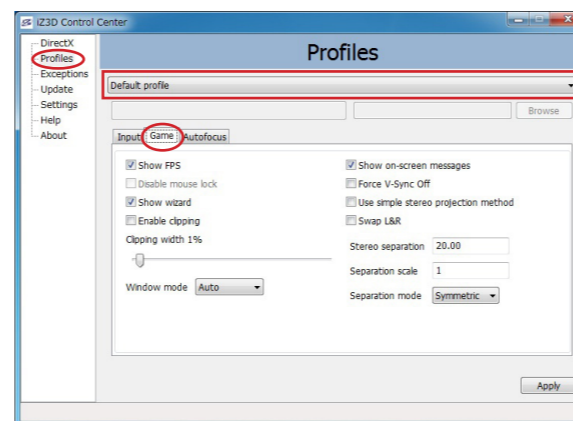
2. With the iZ3D Driver successfully activated, the iZ3D Control Center icon will appear on the Windows desktop and toolbar. Users may double left click on the iZ3D icon to launch the iZ3D Control Center.



3. On launching the iZ3D Control Center, first go to the **DirectX** menu to set the Stereo Status. Selecting **Enable Stereo by Hot-Key** allows users to control 2D/3D mode through hotkeys during gameplay. Choosing **Enable Stereo** will allow the 3D stereo function to be automatically launched with a game. For the settings to take effect, click **Apply** after the selection is done.



4. Secondly, go to the **Profiles** menu to set the game profile. For beginners, please follow the recommended settings as below.



For advanced users, select a desired profile from the previously stored profiles in the drop-down list.

5. On completion of the configuration, users may start the game. Under normal condition, the iZ3D will detect the game program and a message box will appear at the top left corner of the screen.



STARTING 3D STEREO GAMES

After starting the game, press the hotkey * on the numeric keypad to enable the 3D stereo function or to switch between the Mono 2D and Stereo 3D modes.



D3D9 92.51 Stereo
ATI Presenter

D3D9 178.57 Mono
ATI Presenter

► Hotkeys:

Shift & * (numeric keypad) : activate/deactivate iZ3D wizard

*** (numeric keypad)** : toggles stereo

+ (numeric keypad) : increases separation

- (numeric keypad) : decreases separation

/ (numeric keypad) : toggles auto focus

Shift & + (numeric keypad) : increase convergence

Shift & - (numeric keypad) : decrease convergence

Ctrl & F8 : swap left and right

Ctrl & / (numeric keypad) : toggle laser sight

PrtScr: stereo screenshot

THE iZ3D WIZARD

By default, the iZ3D wizard will automatically start every time when a game starts. For beginners, please follow the wizard's step-by-step instructions when starting a game. Disabling the wizard will make the wizard start only with a new game.

Follow the instructions of the message box to enable/disable the wizard by pressing the "C" key or to exit the wizard by pressing the "Shift" & "*" (numeric keypad) keys.

Press 'Shift' + 'Num *' to exit this wizard
Startup wizard launch disabled (press 'C' to enable startup wizard launch)



ADJUSTING THE STEREO FUNCTION

Separation:

Use the "+" and "-" keys in the numeric keypad to adjust the separation for different 3D depth.

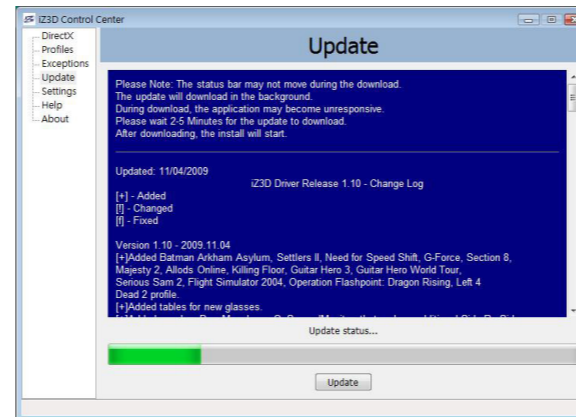
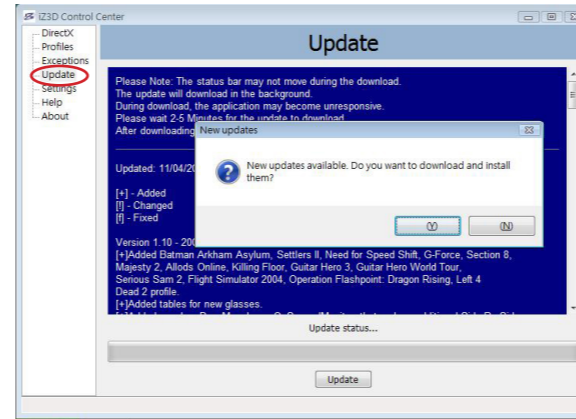
Conversions:

Use the "Shift" & "+" (numeric keypad) or "Shift" & "-" (numeric keypad) keys to adjust the conversions for different focus.



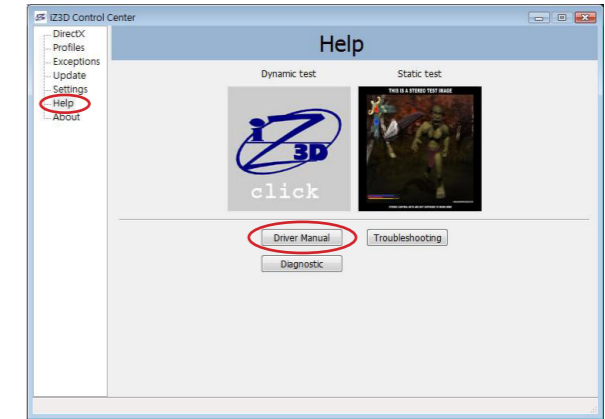
ON-LINE UPDATE


Under network connection, go to the **Update** menu of the iZ3D Control Center. Follow the on-screen instructions to download and install new updates.



DRIVER MANUAL

For more details on iZ3D Driver operations, go to the **Help** menu of the iZ3D Control Center and select **Driver Manual**.



 The illustrations of this guide are for reference only and may slightly vary with territories. All contents are subject to change without notice. All trademarks are the properties of their respective owners.

