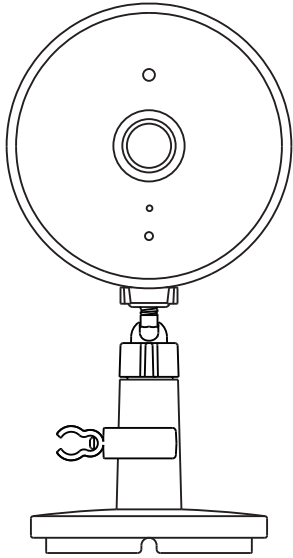


Quick Installation Guide



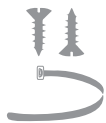
What's in the Box



Full HD Wi-Fi Camera
(DCS-8302LH)



Power Adapter



Mounting Screws and
Cable Ties



Rubber Seal (Ethernet)



Quick Installation Guide

Simple Setup

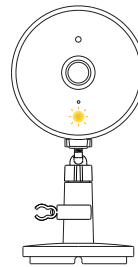
Please set up your device before mounting it.

- 1] Get the **mydlink** app on the App Store or on Google Play. Launch the app, then **Sign In** or **Create a New Account**.

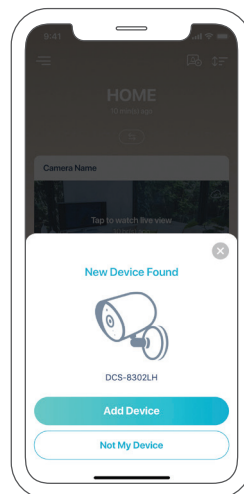


- 2] **Power on** the device and wait for the Status LED to flash orange.

Note: Make sure that your mobile device's Bluetooth is on.



- 3] Place your device next to your mobile device. A prompt will appear - tap **Add Device**, then follow the app instructions.



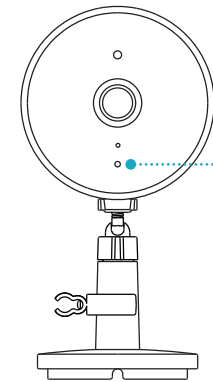
Setup Code



This is a backup of your device's Setup Code. Please keep it as future reference for your device.



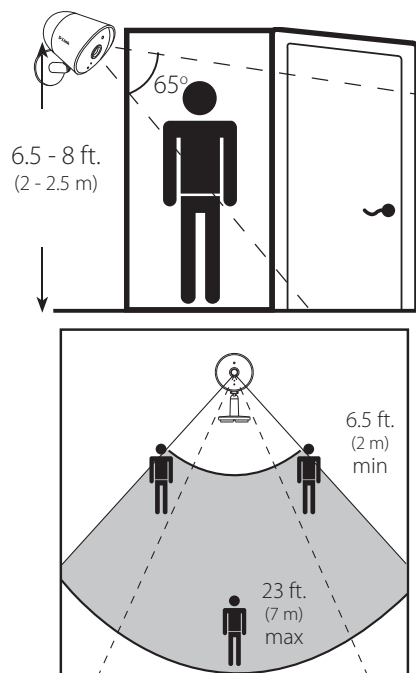
LED Behavior



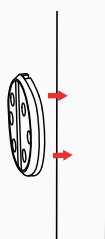
- Connected to network and mydlink
- Booting up
- Ready for setup
- Firmware being updated - do not power off

Mounting

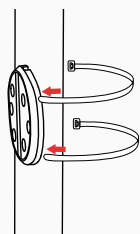
Place the camera 6.5 to 8 feet (2 - 2.5 meters) from the ground. Person Detection works best when the subject is between 6.5 to 23 feet (2 - 7 meters) away from the camera.



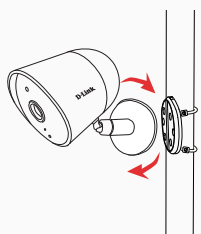
Pole Mounting



Place the mounting bracket against the pole where you want it to be positioned.

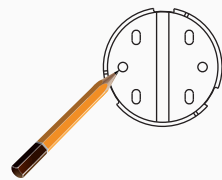


Wrap the cable ties around the pole and thread them through the holes on the mounting bracket. Face the rough side of the cable ties to the pole to avoid slippage.

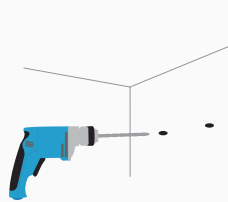


Twist the camera clockwise onto the mounting bracket until it securely locks into place.

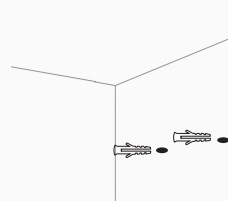
Wall Mounting



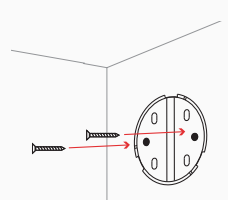
Place the mounting bracket against the wall where you want the device to be positioned. Use a pencil to make two marks where the holes are located.



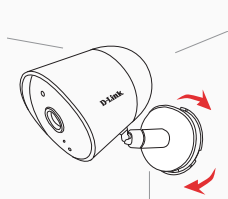
Use a 6 mm drill bit to drill two 26 mm deep holes over the pencil marks.



Hammer in the plastic wall anchors to support the screws.



Align the mounting bracket's holes over the plastic anchors. Drive the screws into the anchors to secure the mounting bracket.



Twist the camera clockwise onto the mounting bracket until it securely locks into place.

For outdoor installations: This device is designed to be installed under eaves or similarly covered locations, and does not support inverted installation. Please ensure that the device is installed with the rubber plug pointed downwards towards the ground, and that it is not installed in an area where it will experience continuous water exposure.

FAQ

What do I do if my device is not working properly?

Reset and reinstall your device. Use a paper clip to press the recessed **Reset** button and the LED will turn solid red. During installation, ensure that:

- Your router is connected to the Internet and Wi-Fi is enabled
- Your mobile device is connected to your router's Wi-Fi and Bluetooth is enabled
- Your mydlink device is in range of your Wi-Fi network

How can I use voice commands to control my device?

The device will work with both Amazon Alexa and the Google Assistant. For setup instructions on these services, visit the following websites:

Amazon Alexa

dlink.com/en/alexa

The Google Assistant:

dlink.com/en/google-assistant

Why is my microSD card not working/not supported?

The microSD card must be formatted into the correct file system (FAT32) before it can be used with this product. This can be done in the mydlink app by selecting the **Format** function in the storage menu under the device settings.

What is my username and password for setting up my device with an ONVIF system?

To connect your device to an ONVIF system, key in "**admin**" as the username and use the PIN code of your mydlink device as the password. You can find the PIN code on your device's label.

Need Help?

Having trouble installing your new product? D-Link's website contains the latest user documentation and software updates for D-Link products. Customers can contact D-Link Technical Support through our website by choosing the relevant region.

Contact Us

www.dlink.com/en/contact-us

