

# HP Proactive Endpoint Management

## Windows Update Fact Sheet

Windows Update Profile applies policies on Windows Desktop Devices to ensure that end users always have access to up-to-date operating system features, the latest security updates and quality enhancements. Windows Update deployment rings allow for customers to test new Feature and Quality updates in a controlled environment prior to rolling out to their wider device ecosystem. The Windows Update service allows customers to specify deadlines for automatic updates and restarts and provides controls to manage timelines for when devices should migrate to newer versions.

Windows Update policies can be targeted to customer-defined device groups, and customers can define the configuration for each ring. The end user experience during the Windows Update patch installation process is transparent, however the end user will be prompted for restart notifications when required.

Windows Update Ring Configuration Fast Option (HP Recommended)		
Windows Update Ring	Branch and Deferral Settings	Description
Pilot Ring	Update Branch: <b>Semi-Annual Channel</b>  Feature Update Deferral: <b>0 days</b>  Quality Update Deferral: <b>0 days</b>	The purpose of this ring is to evaluate major Feature Update releases or Quality Update releases prior to broad deployment.  This ring typically consists of devices used by IT Experts and Business Application Owners <sup>1</sup> .  Recommend targeting at least 5% of entire fleet.
Partial Ring	Update Branch: <b>Semi-Annual Channel</b>  Feature Update Deferral: <b>30 days</b>  Quality Update Deferral: <b>7 days</b>	The purpose of this ring is to further validate major Feature Update releases or Quality Update releases during broad deployment.  This ring typically consists of select devices spanning various teams within the organization.  Recommend targeting at least 15% of entire fleet.
Broad Ring	Update Branch: <b>Semi-Annual Channel</b>  Feature Update Deferral: <b>90 days</b>  Quality Update Deferral: <b>14 days</b>	In this ring, Feature and Quality Updates are broadly deployed across the organization and monitored for feedback.

<sup>1</sup> The Pilot ring would ideally include a representative sample of key business app users, so that customers can quickly identify updates which may be incompatible with business applications.



Slow Option		
Windows Update Ring	Branch and Deferral Settings	Description
Pilot Ring	Update Branch: <b>Semi-Annual Channel</b> Feature Update Deferral: <b>0 days</b> Quality Update Deferral: <b>0 days</b>	<p>The purpose of this ring is to evaluate major Feature Update releases or Quality Update releases prior to broad deployment.</p> <p>This ring typically consists of devices used by IT Experts and Business Application Owners<sup>1</sup>.</p> <p>Recommend targeting at least 5% of entire fleet.</p>
Partial Ring	Update Branch: <b>Semi-Annual Channel</b> Feature Update Deferral: <b>210 days</b> Quality Update Deferral: <b>7 days</b>	<p>The purpose of this ring is to further validate major Feature Update releases or Quality Update releases during broad deployment.</p> <p>This ring typically consists of select devices spanning various teams within the organization.</p> <p>Recommend targeting at least 15% of entire fleet.</p>
Broad Ring	Update Branch: <b>Semi-Annual Channel</b> Feature Update Deferral: <b>330 days</b> Quality Update Deferral: <b>14 days</b>	<p>In this ring, Feature and Quality Updates are broadly deployed across the organization and monitored for feedback.</p>

<sup>1</sup> The Pilot ring would ideally include a representative sample of key business app users, so that customers can quickly identify updates which may be incompatible with business applications.



**Category: Update Installation Behavior**

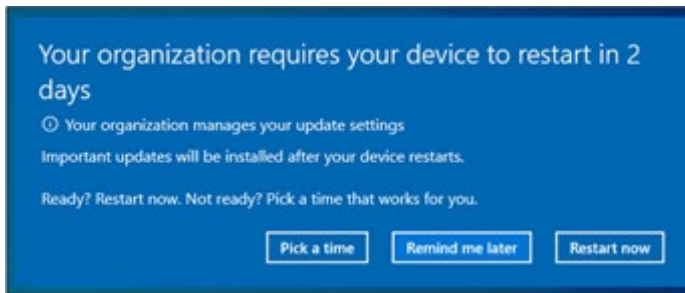
Windows Update Setting	HP Recommended	Description
Automatic Updates	Install Updates but let the user schedule the computer restart	Set how updates from the selected Update Branch are handled. Options are: <ul style="list-style-type: none"> <li>• Install updates automatically</li> <li>• Install Updates but let the user schedule the computer restart.</li> <li>• Install updates automatically and restart at specified time.</li> <li>• Install updates automatically and prevent user from modifying the control panel settings.</li> <li>• Check for updates but let user choose whether to download and install them.</li> </ul> Never check for updates (not recommended).
Active Hours Start Time	8 AM	Start time for active hours. Active hours prevent the system from rebooting after update install.
Active Hours End Time	5 PM	End time for active hours. Active hours prevent the system from rebooting after update install.
Quality Updates Auto Restart Deadline in Days <sup>2</sup>	7 days	The deadline in days after a reboot for updates will be mandatory for Quality Updates.
Feature Updates Auto Restart Deadline in Days <sup>2</sup>	7 days	The deadline in days after a reboot for updates will be mandatory for Feature Updates.
Auto Restart Notification Schedule in Minutes <sup>2</sup>	15 minutes	Timing for auto restart notification
Auto Restart Required for Notification Dismissal <sup>2</sup>	User Dismissal	The behavior for the auto-restart required notification. Available Options: <ul style="list-style-type: none"> <li>• Auto Dismissal</li> <li>• User Dismissal</li> </ul> When set to Auto Dismissal, the notification will dismiss automatically.
Quality Updates Engaged Restart Deadline in Days <sup>2</sup>	2 days	The deadline in days before automatically scheduling and executing a pending restart outside of active hours for Quality Updates.
Feature Updates Engaged Restart Deadline in Days <sup>2</sup>	2 days	The deadline in days before automatically scheduling and executing a pending restart outside of active hours for Feature Updates.
Quality Updates Engaged Restart Snooze Schedule in Days <sup>2</sup>	3 days	The number of days that users can snooze engaged restart reminder notifications for Quality Updates.
Feature Updates Engaged Restart Snooze Schedule in Days <sup>2</sup>	3 days	The number of days that users can snooze engaged restart reminder notifications Feature Updates.
Schedule Auto Restart Warning in Hours <sup>2</sup>	4 hours	Period for auto-restart warning reminder notifications.
Schedule Imminent Restart Warning in Minutes <sup>2</sup>	15 minutes	Period for auto-restart imminent warning notifications.

<sup>2</sup> Generally, a system restart is required after updates are installed and before the device is reported as compliant. End Users will experience the below after installing the updates:

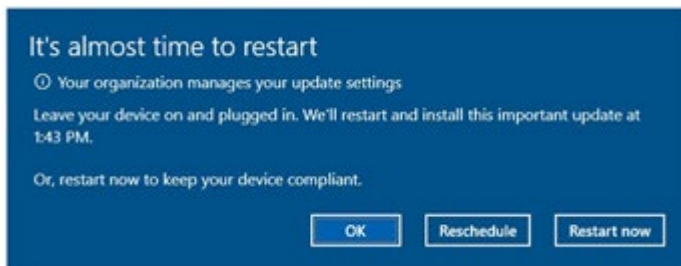


**While a restart is pending, before the deadline occurs:**

- For the first few days, the user receives a toast notification
- After this period, the user receives the following dialog:

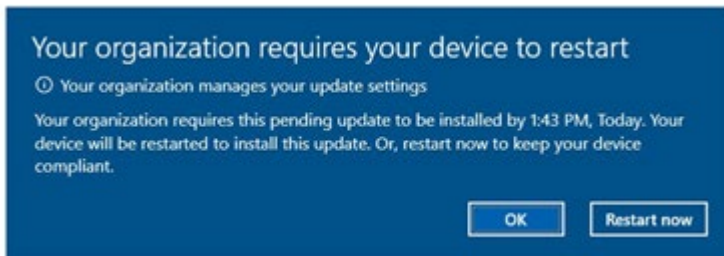


- If the user scheduled a restart or if an auto restart is scheduled, 15 minutes before the scheduled time the user receives this notification that the restart is about to occur:

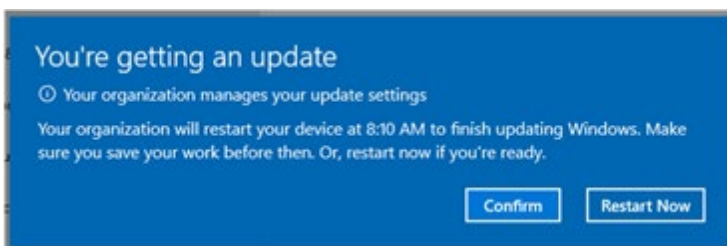


**If the restart is still pending after the deadline passes:**

- Within 12 hours before the deadline passes, the user receives this notification that the deadline is approaching:



- Once the deadline has passed, the user is forced to restart to keep their devices compliant and receives this notification:



**Category: Update Policies**

Windows Update Setting	HP Recommended	Description
Allow Public Updates	Allowed	
Allow Microsoft Updates	Allowed	Allow updates from Microsoft Update
Update Scan Frequency In Hours	22 hours	Windows Update scan frequency from every 1 – 22 hours.
Dual Scan	Disable	
Exclude WU Drivers In Quality Update	Disable	Allow the exclusion of Windows Update drivers during updates. When set to disable, updates which have a Driver classification are included.
Install Signed Updates from 3rd Party Entities	Allowed	Allow the installation of updates from approved third parties
Mobile Operator App Download Limit	Do not ignore	Will not ignore the Mobile Operator download limit over a cellular network for apps and their updates.
Mobile Operator Update Download Limit	Do not ignore	Will not ignore the Mobile Operator download limit over a cellular network for OS updates.

**Category: Delivery Optimization**

Windows Update Setting	HP Recommended	Description
Peer-to-Peer Updates	Allowed	Allow the use of peer-to-peer downloading of updates.
Allowed Peer-to-Peer Method	Use Peers on the same NAT only	The method of peer-to-peer connection you want to allow. Options are: <ul style="list-style-type: none"> <li>• Use Peers on the Same NAT only</li> <li>• Use Peers on the Same Local Network domain</li> <li>• Use Internet Peers</li> <li>• Simple Download Mode</li> <li>• Bypass Mode</li> </ul>
Limit Peer Usage to Members with the same Group ID	Do not limit	Allow the members to leverage peer- to- peer updates with the same group ID
VPN Peer Caching	Not Allowed	Allow the device to participate in Peer Caching while connected to VPN.
Minimum Battery Required for Peer Uploads (%)	40%	Specifies battery levels at which a device will be allowed to upload data.

**Category: Memory**

Restriction Setting	HP Recommended	Description
Maximum Allowed Cache Size	10GB	The maximum number of gigabytes the Delivery Optimization cache can use.
Maximum Cache Size that Delivery Optimization Can Use (%)	20%	Enter the percentage of the cache that delivery optimization can use based on disk size.
Maximum Time Each File is Held in the Delivery Optimization Cache (Seconds)	259200(3 days)	The maximum number of seconds each file can be held in the Delivery Optimization cache.



Minimum Disk Size for Device to Use Peer Caching	32	The required minimum disk size (capacity in GB) for the device to use Peer Caching.
Minimum RAM for Device to Use Peer Caching	4	The minimum RAM size in GB required to use Peer Caching.
Minimum Content File Size that Can Use Peer Caching	4	Minimum Content File Size That Can Use Peer Caching
Drive Location Used for Peer Cache	%SystemDrive%	Allows for an alternate Delivery Optimization cache location on the clients. Can be set to an environment variable, drive letter or folder path.

### Category: Network

Restriction Setting	HP Recommended	Description
Maximum Upload Bandwidth that a Device Will Use Across All Concurrent Upload Activity (KB/second)	0 (Unlimited)	The maximum amount of upload bandwidth individual clients can use for Delivery Optimization.
Maximum Download Bandwidth that a Device Will Use (KB/second)	0 (Dynamically adjusted)	The maximum download bandwidth that can be used across all concurrent Delivery Optimization downloads in kilobytes per second (KB/s).
Maximum Download Bandwidth as a Percentage of Total Available (%)	0 (Dynamically adjusted)	The maximum download bandwidth that Delivery Optimization can use across all concurrent download activities as a percentage of available download bandwidth.
Minimum QoS for Background Downloads (KB/second)	500	The minimum download QoS (Quality of Service or speed) in Kilobytes/sec for background downloads.
Monthly Upload Data Cap (GB)	20GB	The total amount of data in gigabytes that a Delivery Optimization client can upload to peers per month.



© Copyright 2021 HP Development Company, L.P. The information contained herein is subject to change without notice. The only warranties for HP products and services are set forth in the express warranty statements accompanying such products and services. Nothing herein should be construed as constituting an additional warranty. HP shall not be liable for technical or editorial errors or omissions contained herein.

Microsoft and Windows are either registered trademarks or trademarks of Microsoft Corporation in the United States and/or other countries.

February 11, 2021

