

SONY
make.believe

professional quality
in your pocket



NEX-5R

Interchangeable-lens
Digital Camera

the fleeting moment, captured forever

Life waits for no one, so make sure you're prepared for all its enchanting emotions and expressions. Equipped with Sony's new Fast Hybrid AF, NEX-5R has the quick response to catch life's fleeting moments before they slip away. And with the large APS-C sensor, every image will be brimming with detail and rich colors. High-speed up to 10 fps continuous shooting, Full HD movies, easy self-portraits, handy touch screen and more. A camera for those who refuse to let life just pass them by.



NEX-5R

- Exmor® APS HD CMOS sensor with 16.1 megapixels¹
- Newly developed Fast Hybrid AF
- Touch screen with Touch Shutter function
- 180° tiltable 3.0" (7.5 cm) Xtra Fine LCD™ screen
- Built-in Wi-Fi®
- PlayMemories Camera Apps™ service²

NEX-5RK (NEX-5R with SEL1855 lens)



Black



Silver



NEX-5RL (NEX-5R with SELP1650 lens)

beautiful pictures, day or night



E 10-18mm F4 OSS (SEL1018), 1/100 sec., F8, ISO 100, Daylight white balance

16.1 megapixels

Hard-working duo for images that captivate

Whether shooting photos or Full HD movies, Sony's renowned Exmor[®] APS HD CMOS sensor with 16.1 megapixels* and BIONZ[®] image processor combine to produce images of stunning beauty that never fail to impress. The sensor is the same size

as found in larger, more expensive DSLR cameras, and is key to the camera's ability to reproduce smooth tonal gradations, vivid colors and ultra-fine details.

* Effective pixels (approx.)

Exmor. **BIONZ**
APS HD CMOS





E 18-55mm F3.5-5.6 OSS (SEL1855), 1/10 sec., F5.6, ISO 3200, 2800K

ISO 25600

Capturing the moment in any light or setting

A maximum ISO of 25600 means there's hardly a shot you won't be able to get. Ultra-high sensitivity lets you shoot without flash, maintaining the ambience of the lighting to preserve the moment as you experienced it. High ISO settings also allow

use of fast shutter speeds, eliminating the need for a tripod and giving you the ability to freeze fast-moving action. And thanks to BIONZ image processing, noise is kept to a bare minimum for clean, clear images in any light.

catch life before it gets away



E 18-200mm F3.5-6.3 OSS (SEL18200), 1/2000 sec., F5.6, ISO 400, Auto white balance

Fast Hybrid AF system

Phase-detection AF + Contrast-detection AF

Conventional AF system

Contrast-detection AF

Point of focus
Phase-detection AF
Contrast-detection AF



Employs two AF methods



Conventional AF systems sometimes fail to focus on subjects set against a high-contrast background.



Area covered by 99-point phase-detection AF.

New autofocus system with two focus detection methods

Sony's Fast Hybrid AF* opens up a new world of photography with lightning-quick response previously available only on larger, more expensive DSLR cameras. First, fast phase-detection AF quickly moves the lens

to bring the subject into near focus after which highly precise contrast-detection AF finishes focusing. It all happens in the blink of an eye so you're assured of capturing every fleeting moment.

* See "Lens support for Fast Hybrid AF" on the back cover for details on compatible lenses.

Speed Priority Continuous shooting up to a blazing 10 fps

Count on NEX-5R to flawlessly capture any fast-breaking action. Thanks to Fast Hybrid AF, the camera automatically tracks moving subjects and maintains focus, keeping every shot in a high-speed sequence sharp and clear—the ideal way to capture kids at play, sports events or other dynamic scenes.



Sharper images with advanced focus modes

Choose from four focus modes to keep any subject sharply focused: Single-shot AF for static subjects, Continuous AF for moving subjects, and Manual Focus or Direct Manual Focus (DMF) for close-ups or when you want to precisely control the focus point.

Touch screen for easily tracking moving subjects

NEX-5R's touch screen makes it easy to keep moving subjects in focus. Just enable Object Tracking, touch the subject you want focused, and the camera locks onto it for beautiful results, even if you change the composition. The direct, intuitive operation ensures crisply focused images of unpredictable subjects.

Ultra-precise manual focus with MF Assist

Always be assured of sharp images when focusing manually with MF Assist. This magnifies the area of the composition on which focus is being performed by 4.8x or 9.6x, making it particularly valuable when shooting close-ups or at wide apertures.



MF Assist on
(4.8x magnification)



Resulting photo

Confirm focus instantly with the Peaking function

See at a glance whether your subject is in focus with the Peaking function. A highlight appears over the area of the composition that is in focus for instant confirmation. You can change the highlight color and peaking sensitivity level.



Peaking function on



Resulting photo



photography meets fun

Touch Shutter function for casual, carefree shooting

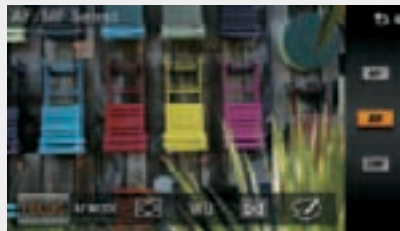
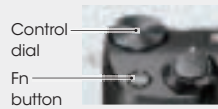
Touch Shutter lets you snap a photo just by touching the subject shown on the LCD screen. After touching the desired subject, the camera snaps into focus then automatically takes a perfectly focused shot.



Just tap the screen and Touch Shutter takes the shot.

Quick access to controls for supreme ease-of-use

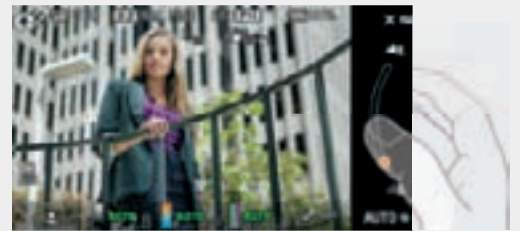
Positioned on top of the camera for easy access, the control dial and Fn (Function) button offer a quick way to change shooting modes and adjust settings.



Use the Fn button to quickly adjust settings.

A vast array of creative tools at your fingertips

Tap into your inner artistry with Photo Creativity. Adjust Brightness, Color, Vividness, Background Defocus and Picture Effect modes just by touching the LCD screen. Changes to most settings are displayed in real-time.



Adjust background defocus and see the effects in real-time.



180° tiltable LCD screen for expressive self-portraits

NEX-5R is the camera for fantastic self-portraits thanks to its 3.0-type 921K-dot Xtra Fine LCD™ screen that tilts completely forward 180° and down approx. 50°. You'll be able to compose carefully for more pleasing and compelling photos and movies. Include someone dear to your heart or frame yourself perfectly against a striking background. For added convenience, after pressing the shutter, the camera counts down for three seconds so you can put on your best face for the shot.



sony redefines what a camera can be

AVCHD
Progressive

Full HD
1080

Works with
iMovie
Mac



Full HD movies

Record beautiful movies thanks to the Exmor® APS HD CMOS sensor and fast readout. NEX-5R supports a variety of movie formats, including AVCHD™ Ver. 2.0 at 60p and 60i as well as 24p. Shoot carefree in fully automatic mode or use P/A/S/M

Smile Shutter™/Face Detection

Capture people when they are at their most charming. The camera waits until faces are smiling then automatically takes the shot. Smile detection is adjustable in three levels.

Soft Skin Effect

Make people look their best by removing unsightly blemishes and wrinkles from faces when you shoot. Softening is restricted to faces and is adjustable in three levels.

Superior Auto

This convenient mode offers the ultimate in shooting freedom. The camera reads the scene then automatically adjusts settings for superb, hassle-free photos and movies.

modes when you want maximum control over the look of the movie. In addition, a wide variety of optional A-mount lenses are available to offer aspiring moviemakers all the tools they need to produce stunning cinema⁴.

Creative Style

Six modes give you creative control over the ambience of photos and movies before the shot. Choose from Standard, Vivid, Portrait, Landscape, Sunset or Black & White.

Scene Selection

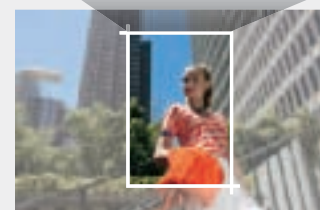
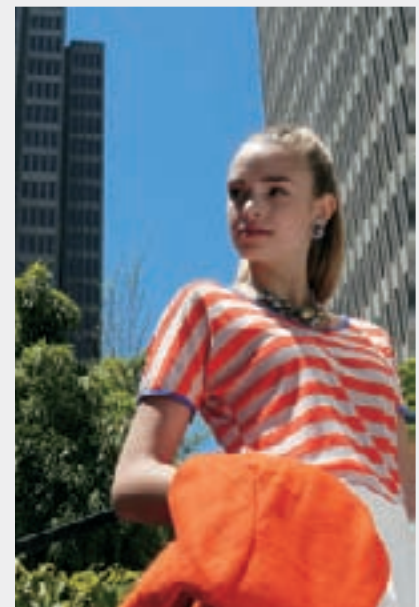
Take the guesswork out of difficult shots. Simply select from one of eight scenes—including Portrait, Sunset and more—and NEX-5R adjusts settings for optimal results.

Sweep Panorama™ Mode

Majestic landscapes and cityscapes can now be captured with ease. Just sweep the camera in an arc while shooting and the camera automatically creates a stunning panorama.

Auto Portrait Framing

Give portraits a professional look. NEX-5R automatically crops images while you shoot for the most pleasing look. It also saves the original so you can decide which is best.



Picture Effect



HDR Painting



Miniature



Soft Focus



Partial Color (Green)

Picture Effect

Creativity comes easy with NEX-5R thanks to Picture Effect. 11 modes with 15 total effects—such as Partial Color, Posterization, Toy Camera, High Contrast Monochrome, HDR Painting and more—give you the means to transform everyday photos

into impressive works of art. As you apply effects, results are shown in real-time on the LCD screen*.

* The following modes are not displayed in real-time and cannot be applied to movies: HDR Painting, Rich-tone Monochrome, Soft Focus and Miniature.

Anti Motion Blur

Sony's compositing technologies decrease blur when capturing scenes in which subject-motion blur can occur, such as in dimly lit settings or when shooting at telephoto focal lengths.

Clear Image Zoom

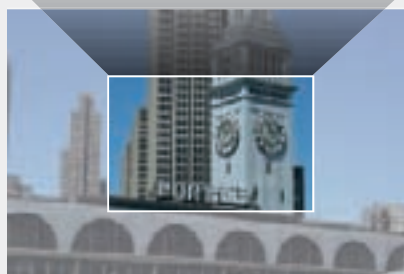
Digitally increase the focal length of lenses by 2x without markedly sacrificing image quality. This is like having another lens, providing extra reach when shooting distant subjects.

Auto HDR

Eliminate blocked shadows and blown highlights in contrasty scenes. The camera takes three shots at different exposures then composites them for photos that closely resemble what your eyes see.

D-Range Optimizer (DRO)

DRO is another way to tame contrasty scenes for more natural looking images. Unlike Auto HDR, which requires stationary subjects, DRO can be used when photographing moving subjects, even during high-speed continuous shooting.



Anti-dust system

NEX-5R's advanced ultrasonic vibration system removes dust from the sensor that can cause spots on images. The system automatically activates when the camera is turned off.

Micro USB terminal

Charge the battery without removing it from the camera. Just connect to a PC via the included micro USB cable.



Multi memory card support

For added storage capability and convenience, NEX-5R's memory card slot supports a variety of media, including high-capacity Sony Memory Stick Pro-HG Duo™* and SDXC memory cards*.

* Sold separately

Long-life battery

Shoot up to 330 images* on a single charge. The durable battery means less worry when shooting for extended periods, such as when touring or at lengthy events, and provides long movie recording and playback times.

* CIPA standard. See www.store.sony.com for details.

wireless networking, handy apps



Wi-Fi connectivity with mobile devices and more

Built-in Wi-Fi lets you view photos on just about any wireless-compatible device. For smartphones and tablet PCs, simply install PlayMemories Mobile™5—a free mobile app—and transfer photos directly from the camera. You can also connect wirelessly to compatible wide-screen TVs to view photos, using the camera as a remote control. And when it's time to download photos and movies to a PC on which PlayMemories Home™5 is installed, do it wirelessly without bothering with cables.



PlayMemories for heightened enjoyment after the shot

PlayMemories Home™



Easy-to-use image management software installs onto Windows® PCs. Use it to download, view, edit, print and share photos and movies.



PlayMemories Studio™



Feature-packed image management software for PS3™ users. Edit and view photos and movies as well as play captivating slideshows with sound.



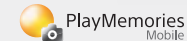
PlayMemories Online™



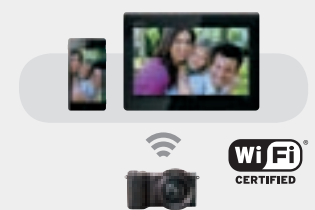
A fun image sharing service for both photos and movies. Uploaded images can be viewed on PCs, mobile devices, compatible BRAVIA® TVs and other devices.



PlayMemories Mobile™



Transfer photos to your smartphone or tablet PC via Wi-Fi with this free mobile application. Available for both Apple iOS and Android™ devices.



Note: Availability of each software service varies according to country or region.

PlayMemories Camera Apps™ Service*

An exciting new application download service, PlayMemories Camera Apps lets you personalize NEX-5R by adding new functions to the camera's existing feature-set. Like a new lens or system accessory, six optional applications—with more available in the future—give you freedom to heighten photographic expression according to your own creative needs².

* www.sony.net/pmca Requires a valid Sony Entertainment Network account.

Picture Effect+

Vastly expand artistic possibilities with six new Picture Effect modes: Partial Color+ (now with the ability to highlight two colors and their similar hues), Watercolor, Illustration, Soft High-Key+, Miniature+ and Toy Camera+.



Partial Color+



Watercolor



Illustration

Note: Release dates of applications vary.

Direct Upload

Upload photos via Wi-Fi directly from NEX-5R to networking services like PlayMemories Online™ and Facebook®, with more services available in the future.

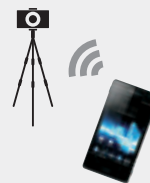
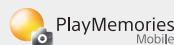
Note: Availability of compatible services may vary.



Smart Remote Control*

Check framing and adjust exposure then release the shutter using your smartphone. This is ideal for group shots or when shooting with a tripod. After the shot, photos will be automatically sent to your smartphone.

* PlayMemories Mobile™ must be installed on the mobile device.



Bracket Pro

For best results in challenging shooting situations, automatically take three shots of the scene at different shutter speeds, aperture settings or focus points. You can even take one shot with flash and one without.

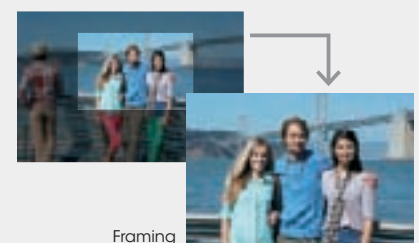


Multi Frame NR

Equips NEX-5R with Multi Frame NR to vastly reduce noise when shooting in dimly lit environments.

Photo Retouch

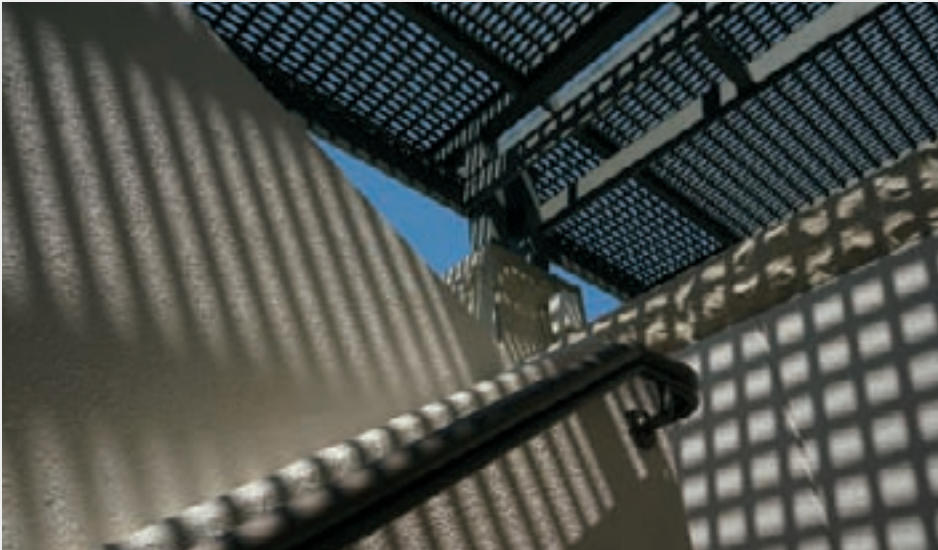
A variety of editing tools help you bring out the best in photos: Framing (which suggests more pleasing framing options for photos with people), Brightness Control, Horizontal Adjustment, Soft Skin Effect and Resize.



Framing

set your creativity free

Lenses



Remarkably compact and versatile zoom lens

What better way to see the world than through Sony's new E PZ 16-50mm F3.5-5.6 OSS zoom lens. Light and compact, it makes the perfect companion for NEX-5R. Featuring power zoom for smooth zooming and a dual-function control ring, which handles both zoom and manual focus, the lens retracts to a mere 29.9 mm when not in use.



NEW

E PZ 16-50mm F3.5-5.6 OSS
(SEL1650)



E 18-55mm F3.5-5.6 OSS
(SEL1855)



E 18-200mm F3.5-6.3 OSS
(SEL18200)



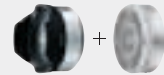
E 18-200mm F3.5-6.3 OSS LE
(SEL18200LE)



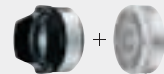
E 55-210mm F4.5-6.3 OSS
(SEL55210)



E 16mm F2.8
(SEL16F28)



Fisheye Converter
(VCL-ECF1)



Ultra Wide Converter
(VCL-ECU1)



E 30mm F3.5 Macro
(SEL30M35)



E 50mm F1.8 OSS
(SEL50F18)



Sonnar T*
E 24mm F1.8 ZA
(SEL24F18Z)



Mount Adaptor
LA-EA2



NEW

E 10-18mm F4 OSS
(SEL1018)



NEW

E 35mm F1.8 OSS
(SEL35F18)

Expanded lens options

When creativity urges you higher, take advantage of the full-range of Sony lenses. Lightweight E-mount lenses provide the ultimate in shooting freedom while premium Sony A-mount lenses* — from fisheye and wide-angle to super telephoto and macro — provide the means for unlimited photographic expression.



* Require optional Mount Adaptor LA-EA2 or LA-EA1.

Accessories



NEW Soft Carrying Case
LCS-SL20

Slim style for storing camera, up to three additional lenses, other accessories and a tablet PC.

NEW Soft Carrying Case
LCS-SL10

Slim style for storing camera, up to two additional lenses and accessories.

NEW Soft Carrying Case
LCS-ELC5

Dedicated NEX-5R snug-fit body case and lens jacket for storing camera with lens.
Note: Compatible with SELP1650/SEL16F28.

NEW Soft Carrying Case
LCS-EJA

Soft Carrying Case
LCS-EJC3

Shoulder Strap
STP-XSG1

Shoulder Strap
STP-XH1

Shoulder Strap
STP-XS3

Wrist Strap
STP-WS2

Electronic Viewfinder
FDA-EV1S

XGA OLED Tru-Finder
Smart Accessory Terminal 2

Flash
HVL-F20S

GN 20*
* ISO 100m
Smart Accessory Terminal

NEW Remote Commander
RMT-DSLR2

NEW Screen Protect Semi Hard Sheet
PCK-LM13

Rechargeable Battery Pack
NP-FW50

InfoLITHIUM SERIES

Battery Charger
BC-VW1

InfoLITHIUM SERIES

USB AC Adaptor*
AC-UD10 (100V-240V)

* Charging only

AC Adaptor
AC-PW20 (100V-240V)

Rear Lens Cap/Body Cap
ALC-R1EM/ALC-B1EM

E-mount

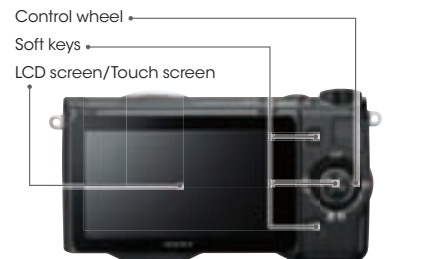
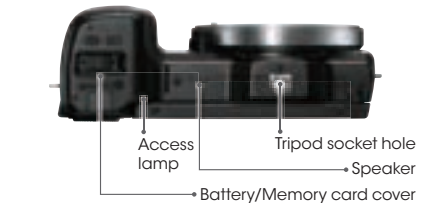
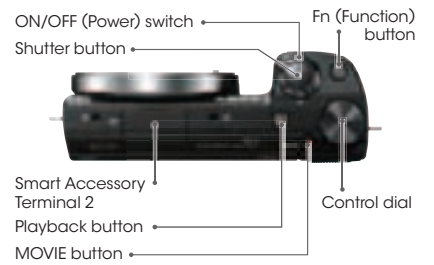
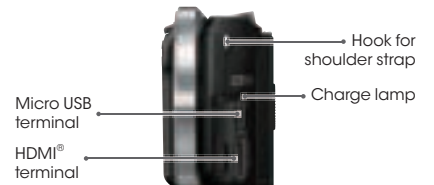
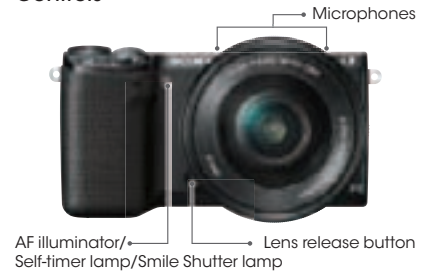
MC Protector
VF-49MPAM
VF-62MPAM
VF-67MPAM

Circular PL Filter
VF-49CPAM
VF-62CPAM
VF-67CPAM

ND Filter
VF-49NDAM
VF-62NDAM
VF-67NDAM



Controls



Number of recordable still images

Image quality mode*	Capacity				
	4 GB	8 GB	16 GB	32 GB	64 GB
Standard	820	1650	3350	6700	13000
Fine	590	1150	2400	4800	9600
RAW & JPEG	160	320	640	1300	2600
RAW	215	440	880	1750	3550

* Image size L 16M, aspect ratio 3:2

* Actual number of images may be less than indicated above depending on shooting conditions.

Recording time for movies

Recording setting	Capacity				
	4 GB	8 GB	16 GB	32 GB	64 GB
60i 24M (FX)	20m	40m	1h 30m	3h 00m	6h 00m
60i 17M (FH)	30m	1h 00m	2h 00m	4h 05m	8h 15m
60p 28M (PS)	15m	35m	1h 15m	2h 30m	5h 05m
24p 24M (FX)	20m	40m	1h 30m	3h 00m	6h 00m
24p 17M (FH)	30m	1h 00m	2h 00m	4h 05m	8h 15m
1440 x 1080 12M	40m	1h 20m	2h 45m	5h 30m	11h 05m
VGA 3M	2h 25m	4h 55m	10h 00m	20h 05m	40h 15m

* Recommended memory cards for movies: Memory Stick PRO Duo™, Memory Stick PRO-HG Duo™, SD/SDHC/SDXC memory cards (Class 4 or better)

* Each time indicated above shows the approximate maximum recordable time of all movie files.

* Maximum movie file size is approx. 2 GB.

* Maximum continuous shooting time is approx. 29 minutes.

Main specifications

NEX-5R

General	
Camera type	Interchangeable-lens digital camera
Lens compatibility	Sony E-mount lenses
Image sensor	
Type	APS-C size (23.5 x 15.6 mm) Exmor® APS HD CMOS sensor with primary color filters
Number of pixels (approx.)	16.1 megapixels (effective), 16.7 megapixels (total)
Image sensor aspect ratio	3:2
Anti-dust system	Charge protection coating on filter and ultrasonic vibration mechanism
Recording system (still image)	
Recording format	JPEG (DCF Ver. 2.0, Exif Ver. 2.3, MPF Baseline compliant), RAW (Sony ARW 2.3 format)
Image size (pixels)	3:2 aspect ratio L: 4912 x 3264 (1.6M), M: 3568 x 2368 (8.4M), S: 2448 x 1624 (4M)
	16:9 aspect ratio L: 4912 x 2760 (1.4M), M: 3568 x 2000 (7.1M), S: 2448 x 1376 (3.4M)
Image quality modes	RAW, RAW + JPEG, JPEG Fine, JPEG Standard
Picture Effect	11 modes (15 effects): Posterization (Color, B/W), Pop Color, Retro Photo, Partial Color (R,G,B,Y), High Contrast Mono, Toy Camera, Soft High-key, Soft Focus, HDR Painting, Rich-tone Mono, Miniature
Creative Style	Standard, Vivid, Portrait, Landscape, Sunset, B/W (Contrast -3 to +3 steps, Saturation -3 to +3 steps, Sharpness -3 to +3 steps)
Dynamic range functions	Off, Dynamic Range Optimizer (Auto/Level), Auto High Dynamic Range: Off, Auto Exposure Difference, Exposure Difference Level (1.0-6.0 EV, 1.0 EV step)
Color space	sRGB, Adobe RGB
Recording system (movie)	
Recording format	AVCHD™/MP4
Video compression	MPEG-4 AVC (H.264)
Audio recording format	Dolby Digital (AC-3)/MPEG-4 AAC-LC, 2ch
Image size (pixels)	1080 60i compatible device
Media	AVCHD™: 1920 x 1080 (60p/28 Mbps/PS, 60i/24 Mbps/FX, 60i/17 Mbps/FH, 24p/24 Mbps/FX, 24p/17 Mbps/FH) MP4: 1440 x 1080 (30 fps/12 Mbps), 640 x 480 (30 fps/3 Mbps)
Media	Memory Stick PRO Duo™, Memory Stick PRO-HG Duo™, SD memory card, SDHC memory card, SDXC memory card
Slot	Multi-media compatibility with Memory Stick Duo and SD memory cards
Noise reduction	
	Long exposure NR: On/Off, available at shutter speeds longer than 1 sec., High ISO NR: High/Normal/Low
White balance	
Modes	Auto WB, Daylight, Shade, Cloudy, Incandescent, Fluorescent, Flash, C, Temp 2500 to 9900K, C, Filter (G7 to M7 15-step, A7 to B7 15-step), Custom
AWB micro adjustment	G7 to M7 15-step, A7 to B7 15-step
Focus system	
Type	Fast Hybrid AF (phase-detection AF/contrast-detection AF)
Focus point	99 points (phase-detection AF), 25 points (contrast-detection AF)
Sensitivity range	EV 0 to EV 20 (at ISO 100 equivalent with F2.8 lens attached)
Focus modes	Autofocus, DMF (Direct Manual Focus), Manual Focus
AF modes	AF-S: Single-shot AF, AF-C: Continuous AF
Focus area	Multi Point AF (99 points for phase-detection AF, 25 points for contrast-detection AF), Center-weighted, Flexible Spot
Other features	Tracking focus, Predictive control, Focus lock, AF micro adjustment, Eye-start AF (only available with optional LA-EA2 and FDA-EV1S attached)
AF illuminator	Built-in LED
AF illuminator range (approx.)	0.5-3.0 m (approx., with E 18-55mm F3.5-5.6 OSS attached)
Exposure control	
Metering type	1200-zone evaluative metering
Metering sensor	Exmor APS HD CMOS sensor
Metering sensitivity	EV 0 to EV 20 (at ISO 100 equivalent with F2.8 lens attached)
Metering modes	Multi-segment, Center-weighted, Spot
Exposure modes	iAUTO, Superior Auto, Programmed AE (P), Aperture priority (A), Shutter-speed priority (S), Manual (M), Sweep Panorama, Scene Selection
Scene Selection	Portrait, Landscape, Macro, Sports Action, Sunset, Night Portrait, Night Scene, Hand-held Twilight, Anti Motion Blur
Exposure compensation	+/- 3 EV (in 0.3 EV steps)
Bracketing	1/3, 2/3, 1, 2 and 3EV increments, 3 frames
AE lock	Locked when shutter button is pressed halfway. Can be disabled from the Menu.
ISO sensitivity (Recommended Exposure Index)	Still images: ISO 100-25600, AUTO (ISO 100-3200), Movies: ISO 100-6400 equivalent, AUTO (ISO 100-3200 equivalent)
LCD monitor	
Type	3.0" (7.5 cm) wide type TFT (Xtra Fine LCD™)
Touch panel	Yes, pressure-sensitive type
Number of dots (total)	921,600 dots
Brightness control	Manual (5 steps between -2 and +2), Sunny Weather mode
Field Coverage	100%
Adjustable angle	Up approx. 180 degrees, down approx. 50 degrees
Display contents	Graphic Display, Display All Info, Big Font Size Disp., No Disp. Info, Histogram, For Viewfinder
Real-time image-adjustment display	Exposure Comp., White Balance, Creative Style
Focus check	MF Assist (4.8x, 9.5x) Peaking (Level: High/Mid/Low/Off, Color: White/Red/Yellow)
Face Detection	
Modes	On, Off, Face Registration, Face Selection; max. eight faces detected
Other features	
	Touch Shutter, Auto Portrait Framing, Smile Shutter™ (3 steps), Self-portrait Self-timer (3 sec. delay)

Clear image zoom	
Still Images	Approx. 2x
Digital zoom	
Digital Zoom (still images)	Approx. 4x
Smart Zoom (still images)	Approx. 1.4x/2x
Digital Zoom (movies)	Approx. 4x
Shutter	
Type	Electronically controlled, vertical-traverse, focal-plane type
Shutter speed	Still images: 1/4000 to 30 sec., Bulb, Movies: 1/4000 to 1/4 (1/3 step), up to 1/60 in AUTO mode, up to 1/30 in Auto Slow Shutter mode
Flash sync. speed	1/160 sec.
Electronic front shutter curtain	Yes, On/Off
SteadyShot INSIDE™ (image stabilization)	
Type	Not supported (image stabilization supported by lens)
Flash	
Flash	External flash (supplied) attachable to Smart Accessory Terminal 2
Guide No.	7 (in meters at ISO 100 equivalent)
Flash coverage	16 mm (focal-length printed on the lens body)
Control	Pre-flash TTL
Flash compensation	+/- 2 EV in 0.3 EV steps
Flash modes	Flash off, Autoflash, Fill-flash, Slow Sync., Rear Sync.
Recycling time	Approx. 4 sec.
External flash	Smart Accessory Terminal compatible flash HVL-F20S (optional)
Drive	
Modes	Single-shot, Continuous, Speed Priority Continuous, Self-timer (10/2 sec. delay), Self-timer (Cont.) (10 sec. delay; 3/5 exposures), Bracketing, Remote Cdr (with RMT-DSLR2, sold separately)
Speed (max.)*	Continuous mode: 3 fps, Speed Priority Continuous mode: Up to 10 fps
No. of recordable frames in Continuous drive mode (Hi)*	Fine: 15 frames, Standard: 16 frames, RAW: 11 frames, RAW & JPG: 10 frames
Playback	
Modes	Single (with or without shooting information, RGB histogram, and highlight/shadow warning), 6/12-frame index view, Enlarged display mode (L: 14x, M: 11x, S: 7.3x), Panorama (Standard): 24x, Panorama (Wide): 34x, Auto Review (10/5/2 sec., Off), Image orientation (On/Off), Slideshow, Panorama scrolling, Folder selection (Still), Forward/Rewind (movie), Delete, Protect
Wi-Fi	
Playback on smartphone	Yes
Upload to PC	Yes
Playback on TV	Yes
PlayMemories Camera Apps™	Yes
Interface	
PC interface	Hi-speed USB (USB 2.0); Mass-storage, MTP
HD output	HDMI™ mini connector (Type-C), BRAVIA™ Sync (link menu), PhotoTV HD
Smart Accessory Terminal 2	Yes
Compatible OS* (USB connection)	Windows® XP** SP3, Windows Vista® SP2, Windows 7 SP1, Mac OS® X (10.3-10.8) * Must be installed with the above OS at delivery. Proper operation cannot be guaranteed with the upgraded OS environment. ** 64-bit and Starter Editions are not supported. The Windows Image Mastering API (IMAPI) Ver. 2.0 or later is required to use the function for creating discs.
Audio	
Microphone	Built-in stereo microphone or ECM-SS11 (optional)
Speaker	Built-in monoaural; volume setting in 8 steps
Print	
Compatible standards	Exif Print, Print Image Matching III, DPOF setting
Custom function	
Type	Custom key settings
Power	
Battery	Rechargeable Battery Pack NP-FW50
Still images	Approx. 330 images (CIPA standard)
Movies	Approx. 100 min. (1920 x 1080, 17 Mbps)
Internal battery charge	Micro USB type B
External power	AC Adaptor AC-PW20 (optional)
Weight	
With battery and Memory Stick PRO Duo	Approx. 9.7 oz (276 g)
Body only	Approx. 7.7 oz (218 g)
Dimensions	
W x H x D (excluding protrusions)	Approx. 4 3/8 x 2 3/8 x 1 9/16 in. (110.8 x 58.8 x 38.9 mm)
Operating temperature	
Range	32-104°F/0-40°C

Specifications and features are based on information available at the time of printing and are subject to change without notice.

Lens support for Fast Hybrid AF

The following lenses support phase-detection AF but initially require a firmware update (available from the Sony website) if not included as kit lenses with NEX-5R: E 18-55mm F3.5-5.6 OSS, E 55-210mm F4-6.3 OSS, E 18-200mm F3.5-6.3 OSS, Sonnar T* E 24mm F1.8 ZA, E PZ 16-50mm F3.5-5.6 OSS (does not require firmware update).

Other lenses can be used with NEX-5R but will employ only contrast-detection AF. Additional E-mount lenses will support phase-detection AF in the future.

 Sony World Photography Awards For more details, visit the website at: www.worldphoto.org

System requirements of bundled software

	Image Data Converter Ver. 4		PlayMemories Home™
OS*	Microsoft Windows®	Macintosh	Microsoft Windows®
	Windows® XP** SP3, Windows Vista® SP2, Windows 7 SP1	Mac OS® x (10.5-10.8)	Windows® XP** SP3, Windows Vista® SP2, Windows 7 SP1
CPU	Pentium 4 or faster	Intel Core Solo/Core Duo/Core 2 Duo or faster	Pentium III 800 MHz or faster; for playing/editing HD movies: Intel Core Duo 1.66 GHz or faster/ Intel Core 2 Duo 1.66 GHz or faster, Intel Core 2 Duo 2.26 GHz or faster (AVC HD (FX/FH))
	Memory	1 GB or more	512 MB or more; for playing/editing HD movies: 1 GB or more

The computer environment must also satisfy the operating requirements of the OS.

* Must be installed with the above OS at delivery. Proper operation cannot be guaranteed with an upgraded OS environment.

** 64-bit and Starter Editions are not supported. The Windows Image Mastering API (IMAPI) Ver. 2.0 or later is required to use the function for creating discs.

© 2012 Sony Electronics Inc. All rights reserved. Reproduction in whole or in part without written permission is prohibited. Features and specifications subject to change without notice. α, Exmor, BIONZ, BRAVIA, SteadyShot, VAIO, InfoLithium, Translucent Mirror Technology, Tru-Finder, Memory Stick, Memory Stick, Memory Stick PRO Duo, Memory Stick PRO-HG Duo, PlayMemories Home, PlayMemories Studio, PlayMemories Online, PlayMemories Mobile and PlayMemories Camera Apps are trademarks or registered trademarks of Sony Corporation. "Xperia" is a trademark or registered trademark of Sony Mobile Communications AB. PlayStation is a registered trademark of Sony Computer Entertainment Inc. AVCHD and AVCHD Progressive are trademarks of Panasonic Corporation and Sony Corporation. SD Logo, SDHC Logo and SDXC Logo are trademarks of SD-3C, LLC. HDMI, HDMI Logo, and High-Definition Multimedia Interface are trademarks or registered trademarks of HDMI Licensing LLC in the United States and other countries. iMovie is a trademark of Apple Computer, Inc., registered in the U.S. and other countries. Works with iMovie is a trademark of Apple Computer, Inc. The Wi-Fi Protected Setup Identifier Mark is a mark of the Wi-Fi Alliance. All other company and product names mentioned herein are used for identification purposes only and may be the trademarks or registered trademarks of their respective owners. InfoLithium is a lithium battery pack which can exchange data with compatible electronic equipment about its energy consumption. Sony recommends that you use the battery pack with electronic equipment bearing the mark. Screen displays are simulated. Simulated effects are used to illustrate some functions.

- Effective pixels (approx.)
- PlayMemories camera app requires download with existing Sony Entertainment Network account. Download available in all countries/areas where Sony Entertainment Network is available.
- 1080 60i devices.
- Attaching Sony A-mount lens requires LA-EA1 or LA-EA2 adaptor (both sold separately). Autofocus available with SSM and SAM series lenses.
- Requires an active 802.11 Wi-Fi network (802.11n recommended) or PlayMemories Mobile™ app installed on compatible Android™ or iOS device.