



GXD-L52H1

The GXDL52H1 is a 52-inch, full High Definition LCD display, offering a range of unique and innovative features.



Sony's first full High Definition professional LCD monitor delivers outstanding picture quality in a durable unit that is ideal for professional applications. When you need performance you can rely on, the GXD-L52H1 delivers every time.

This professional monitor has a range of unique features which make it robust and reliable, including dust-resistance and a protective glass front to protect the LCD screen.

It is designed to offer maximum reliability and is the ideal choice for environments such as transport hubs, bars, clubs, retail and offices. The HDSDI compatibility makes it suitable for various broadcast and healthcare applications.

Features

Backlight Control System

The monitor continues working, even after failure of one or more of the Cold Cathode Fluorescent Lamps (CCFLs) which make up the backlight. (Conventional monitors will switch off after failure of one CCFL). If a second CCFL fails, a warning report will be sent.

Impact Resistant Front Panel

The robust glass front provides protection against impact, dirt and splashing. In case of scratches or damage, it can be replaced without taking the monitor off its mounting.

Stylish Design

The materials used in this monitor are stylish and complement the resilient build. For example, the aluminium frame is strong and robust as well as very attractive.

Benefits

1080 Full HD

1080 Full High Definition refers to 1080 lines. This is the common broadcast format and 1080 Full HD replicates this exactly. HD Ready products can also show images broadcast in 1080, but only have 720 lines, so have to convert the signal. All 1080 Full HD models are also HD Ready, but have a higher resolution of a massive 6.2 megapixels to give you clarity, definition and depth like no other.

Network Capability

Built-in RJ45 connection for networking. RS232C and Control-S via the optional board.

On/Off Timer

Power on/off time can be programmed as hh:mm per day as well as on specific day(s) of the week.

Picture-in-Picture (PiP),Picture-and-Picture (PaP)

PIP allows for the picture from a secondary source to be displayed within the main picture. PAP allows the pictures from 2 separate sources to be displayed side-by-side.

Multi Display Setup

As well as 2x2, 3x3 and 4x4, you can now choose 1x2, 1x3, 1x4, 2x1, 3x1 and 4x1. Tiles or window output setting is also available. Just select your wall configuration in the menu and then select the position of the screen within the grid.

Control Panel Lock

Disable the control panel to prevent unauthorised changes of display settings.

HDMI-Input

HDMITM stands for High Definition Multimedia Interface and is a single digital connection delivering the best video and audio signal. When projecting an image via a HDMITM device the picture quality greatly improves.

DVI - HDCP Input

Industry standard digital input.

HDSDI Compatible

HDSDI Input/Output Adaptor (with audio).

Optional Slots

Allows the use of additional boards to enhance the versatility of the display.

Conference Mode

Picture mode for use in videoconferencing, brightens faces to show expressions more clearly.

Portrait Mode

Choose portrait or landscape orientation to fit content or available space. This model has equal panel life in landscape or portrait orientation.

Technical Specifications

Panel

Panel size	52"
Native resolution	1920x1080
Luminance	500 cd/m2
Contrast	800:1
Viewing angle (H/V)	178°/178°
Pixel size (HxV)	0.6x0.6mm
Colours (millions)	1070
Display area (HxV)	152x648mm

Input connectors

PC	HD15/DVI-HDCP
Video	Composite Video (BNC) / S-Video (mini-DIN4) Component Video (HD15) / HDMI
Audio	Stereo mini x3
Control	LAN (RJ45) / RS232C* / S Control*

Output connectors

Video	Composite video
Audio	Audio mini

Video signal

Video	NTSC/PAL/NTSC4.43/ PAL-M/PAL60/PAL-N
-------	--------------------------------------

Speaker output

Speaker output	2 x 7 W
----------------	---------

Power requirements

Requirements	AC100-240V, 50/60Hz
Consumption	380W (typ.)

Dimensions

Dimensions	1281x764x152
(kg/lb)	65 / 143

Optional slots

Optional slots	1
----------------	---

Supplied Accessories

Warranty card	
Batteries	
Remote controller	RM-FW001
Cable holder	4
BNC/RCA conversion adaptor	
Component video HD15/RCA cable	
Instruction manual	
Power cable	



Picture Perfect Audio Visuals

www.ppav.co.uk
FREEPHONE: 0 800 034 7134

THE AUDIO VISUAL SPECIALIST FROM INSPIRATION TO INSTALLATION

Services:

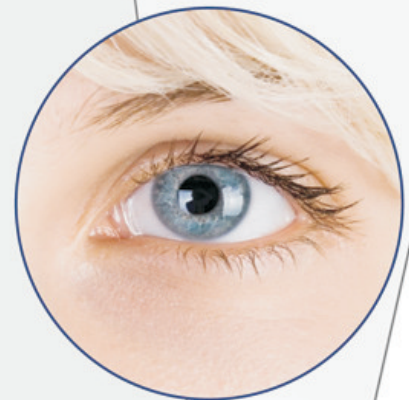
- Audio Visual Consultancy
- Sales
- Design & Installation
- Rental
- Sets Lighting
- Event Management & Production

Available for:

- Corporate
- Commercial
- Retail
- MOD
- Public Sector
and Consumer Markets

Tailored towards:

- Conferences
- Exhibitions
- Seminars
- Presentations
- Events
- Launch Parties
- Road Shows
- Hotels
- Private Functions
- Retail Shops
- Bars and Restaurants
- Night Clubs
- Health and Fitness Clubs
- Theme Parks
- Entertainment Zones



SALES • DESIGN & INSTALLATION • HIRE • EVENT MANAGEMENT & PRODUCTION