

# ideacentre 510

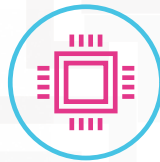
## UPGRADE YOUR FAMILY DESKTOP PC

### A DESKTOP KEEPING YOUR FAMILY CONNECTED

Great for family members to connect and share, Lenovo™ IdeaCentre™ 510 is equipped with AMD Bristol Ridge processors, optional Intel GT730 or AMD RX550 graphics. Up to PCIe 256 GB SSD and 2 TB HDD Hybrid storages, Lenovo IdeaCentre 510 offers your own storage assistant - Lenovo Family Cloud where you can share any content you like with your family members and friends.



#### WHY YOU SHOULD BUY THE LENOVO IDEACENTRE 510



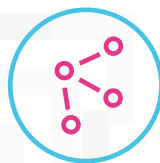
##### Flawless performance

Built with AMD Bristol Ridge processors and complete with optional Intel GT730 or AMD RX550 graphics, IdeaCentre 510 is the perfect combination of daily



##### Lightning-fast PCIe SSD storage

Latest storage technology - PCIe SSD storage boosts daily performance significantly when compared with a traditional Hard Disk Drive.



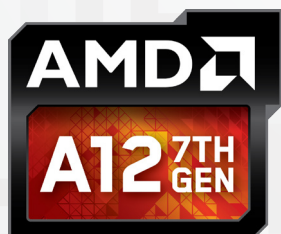
##### Connects to all your accessories

Your monitor, keyboard, external hard drive, camera and favorite speakers don't need to vie for available ports on the IdeaCentre 510. This machine offers multiple ways to connect.



##### Lenovo family cloud

A central interface for your secured data storage features smart recognition technology, and effortlessly upload and download between your mobile and PC within the same network.



Lenovo™



[WWW.LENOVO.COM](http://WWW.LENOVO.COM)

# ideacentre 510

## SPECIFICATIONS

Lenovo IdeaCentre 510-15ABR\*

### PERFORMANCE

**Processor**  
AMD Bristol Ridge Processors

**Operating System**  
Windows 10 Home

**Graphics**  
Up to AMD RX460

**Memory**  
Up to 16 GB DDR4

**Storage**  
Up to 256 GB SSD  
Up to 2 TB HDD

### CONNECTIVITY

**WLAN**  
M.2x2 (1 x WiFi; 1 x M.2 SSD)

**LAN**  
1 x LAN 1000M

**Bluetooth®**  
Bluetooth® 4.0

**I/O (Input/Output) Ports**  
2 x USB 3.0  
4 x USB 2.0  
1x VGA  
1x HDMI  
7 in 1 CardReader \*optional

### DESIGN

**Volume**  
15 Liter

**Dimensions (W x D x H)**  
(mm) : 145 x 285.2 x 366.03  
(inches): 5.71" x 11.23" x 14.41"

**Weight**  
Starting at 15.1 lbs (6.85 kg)

**Color**  
Silver

**DVD/CD Burner**  
Yes

**Built-in Cloud Support**  
Yes

### PRELOADED SOFTWARE

#### Lenovo Application

- Lenovo Rescue System
- Lenovo DAI (Driver and Application Install)
- Lenovo Companion
- Lenovo Family Cloud
- Lenovo ID
- Lenovo Application Explorer (LAE)
- Lenovo Audit Data (LAD)
- CCSDK

#### OEM Application

- McAfee™ AntiVirus
- Microsoft Office 2016
- Power2Go/Blu-ray Disc™ 6.0
- PowerDVD/Blu-ray Disc™ 12.0
- Adobe® Reader® 10 / Microsoft Silverlight 4.0\*
- E&M Monetization Software (LAD, IE Bookmark, DAD, Dropbox JP . . .)

\* For Canada/USA.



## OPTIONS & ACCESSORIES



Lenovo 500  
Wireless Combo  
Keyboard and Mouse

\* Example of  
Lenovo IdeaCentre  
catalogue naming  
convention



#### AMD platform codes

Kaveri: **AKV**, Carrizo: **ACZ**, Godavari: **AGR**, Bristol Ridge: **ABR**, Beema: **ABM**, Carrizo-L: **ACL**, Bristol Ridge-L: **ABL**, Stoney Ridge: **ASR**

## LENOVO SERVICES

#### Warranty Extensions<sup>1</sup>

This fixed-term, fixed-cost service helps accurately budget for PC expenses and protect your investment.

#### Warranty Upgrade to Onsite Service Repair<sup>2</sup>

Maximizes PC uptime and productivity by providing Convenient, fast repair service at your place.

#### Lenovo Services Premium Support<sup>3</sup>

One-stop solution for non-warranty challenges with network, security and software setup, performance tune-up and more.<sup>3</sup>

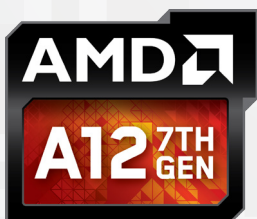
#### Lenovo Premier Support<sup>1,2</sup>

Dedicated access to advanced troubleshooting and end-to-end case management.

<sup>1</sup> Up to 3 years total duration

<sup>2</sup> May not be available in all countries

<sup>3</sup> Available in Austria, Germany, Ireland, Switzerland and UK



[WWW.LENOVO.COM](http://WWW.LENOVO.COM)

Lenovo reserves the right to alter product offerings and specifications at any time, without notice. Lenovo makes every effort to ensure accuracy of all information but is not liable or responsible for any editorial, photographic or typographic errors. All images are for illustration purposes only. For full Lenovo product, service and warranty specifications visit [www.lenovo.com](http://www.lenovo.com). Lenovo makes no representations or warranties regarding third party products or services. **Trademarks:** The following are trademarks or registered trademarks of Lenovo: Lenovo, the Lenovo logo, ideapad, ideacentre, yoga and yoga home. Microsoft, Windows and Vista are registered trademarks of Microsoft Corporation. AMD, the AMD Arrow logo and combinations thereof are trademarks of Advanced Micro Devices, Inc. in the United States and/or other jurisdictions. Other company, product and service names may be trademarks or service marks of others. Battery life (and recharge times) will vary based on many factors including system settings and usage. Visit [www.lenovo.com/lenovo/us/en/safecomp/](http://www.lenovo.com/lenovo/us/en/safecomp/) periodically for the latest information on safe and effective computing. ©2017 Lenovo. All rights reserved.

Lenovo™