

ELITETM CABINET AND RACK ENCLOSURES

FULLY CUSTOMIZABLE FOR YOUR SPECIFIC APPLICATIONS



ROBUST CABINETS FOR ANY APPLICATION

MORE FEATURES

The Elite Cabinet family from Black Box delivers more features and options than any other Black Box cabinet – more door and panel choices, more cable management, features like high-flow mesh on all mesh doors, and dual universal PDU mounting brackets. Plus Elite Cabinets feature heavy-duty, welded steel construction and come with the protection of a lifetime Black Box® Double Diamond™ warranty. The cabinets arrive fully assembled and ready to populate.

MORE CHOICES

Elite Cabinets are specifically designed to be adaptable to your exact needs. Whether you need a high-airflow cabinet for your data center or a small, secure cabinet for an office, the Elite Cabinet family has exactly the cabinet for you. Select a pre-configured cabinet or have one customized to your specifications and shipped in only two business days. Choose from a wide range of sizes to suit all your data and server cabinet needs. Our Tech Support experts will help you specify the cabinet you need – FREE of charge.

MORE CABLE MANAGEMENT

Cable management is easy – extensive cable knockouts on the top and sides provide convenient cable entry. The cabinets feature multiple lacedown points throughout. For even more cable management, add our Horizontal and Vertical Lacing Bars or Front-to-Back Cable Managers (page 13).

MORE VERSATILITY

Because Elite Cabinets come with a wide range of choices in frame sizes, rails, doors, and top and side panels, they adapt to nearly any application. Choose your rails. Rails with M6 square holes are standard in server cabinets. They enable you to use vendor-supplied server rails that latch into the square holes to support servers, or to convert the square hole to a threaded M6, 10-32, or 12-24 hole by using cage nuts.

Use rails with 10-32 tapped holes for audio, datacomm, and telco equipment. Most shelves are also compatible with 10-32 rails. Cabinet doors are available in solid, high-flow mesh, split high-flow mesh, smoked PLEXIGLAS®, or solid with fans. You also can choose a cabinet with no doors. Side panels can be solid or vented, or you can leave them off. All Elite Cabinets have our high-flow mesh, which improves airflow approximately 10% over typical cabinets.

Cabinet tops are customizable, too – choose a top panel with or without fans, or use the top opening to rackmount up to 12U of shallow components such as patch panels or power strips. For more information, call our FREE Tech Support. For data center installations, Elite Cabinets are Ladder Rack ready with the addition of the optional Ladder Rack Bracket (page 13).

LIFETIME WARRANTY

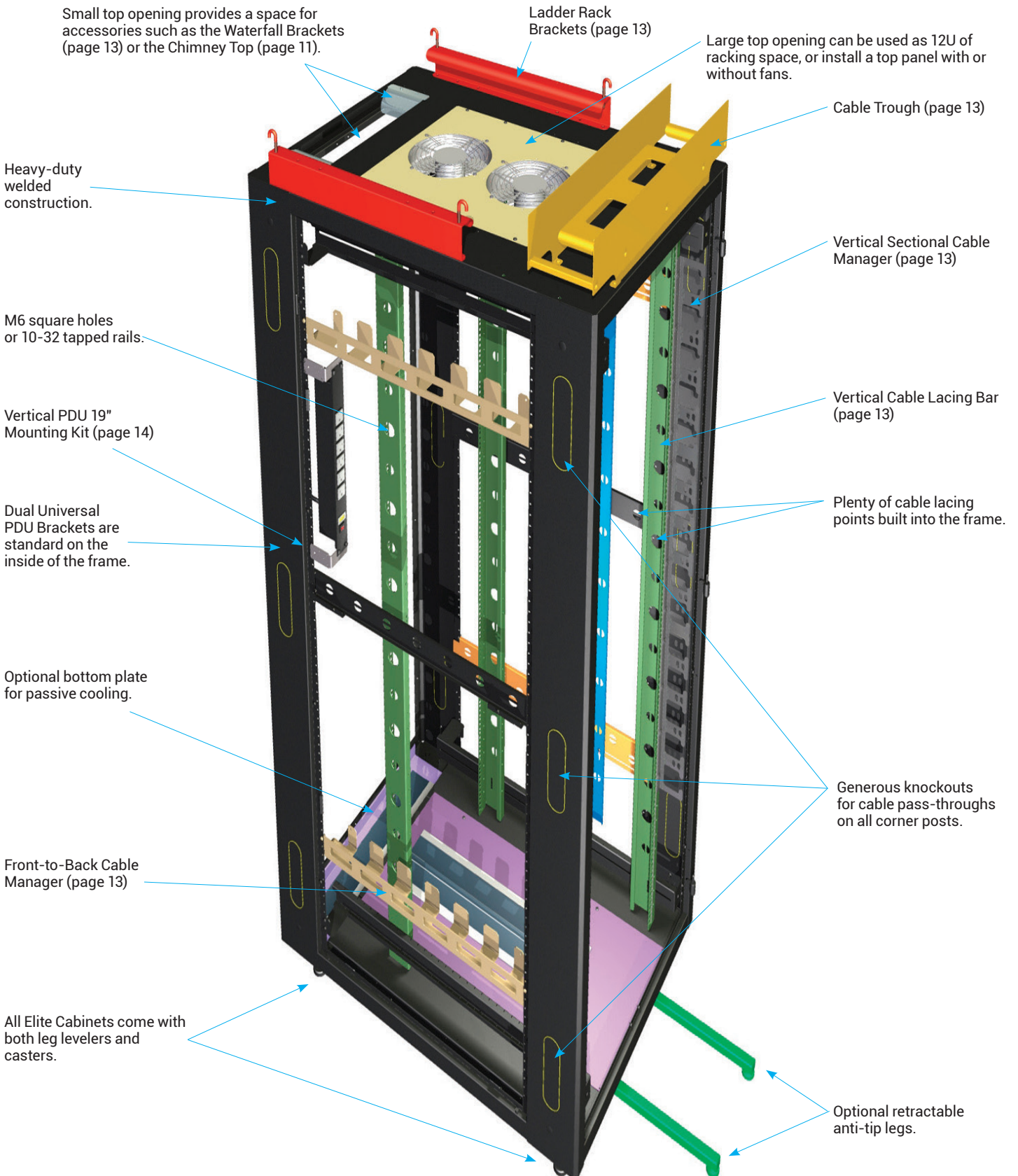
Protect your IT investments

Environmental monitoring is a cost-effective, proactive way to protect your investments from climate, overheating, theft, etc. Find out more about AlertWerks™ at blackbox.com/go/AlertWerks or get FREE, live help in less than 30 seconds at 724-746-5500.



EC45U3042SMDS6YK

MORE FEATURES AND OPTIONS THAN ANY OTHER BLACK BOX CABINET.



MOST COMMON CABINET CONFIGURATIONS ARE READY TO SHIP TODAY.

These popular Elite Cabinet configurations are in stock and ready to ship now. Don't see what you need here? Just turn the page for details on customizing your cabinet to your exact specifications.



EC45U2436SMDSSNK

ELITE™ CABINETS

CATALOG #	DESCRIPTION
84"H (45U) X 24"W X 36"D	
Mesh Front and Rear Doors, Solid Side Panels, Keyed Lock	
M6 RAILS	
EC45U2436SMMSMNK	Mesh Top Panel
EC45U2436SMMS3NK	3-Fan Top Panel
EC45U2436SMMS6NK	6-Fan Top Panel
10-32 TAPPED RAILS	
EC45U2436TMMSMNK	Mesh Top Panel
EC45U2436TMMS3NK	3-Fan Top Panel
EC45U2436TMMS6NK	6-Fan Top Panel
Mesh Front Doors, Split Mesh Rear Door, Solid Side Panels, Keyed Lock	
M6 RAILS	
EC45U2436SMDSMNK	Mesh Top Panel
EC45U2436SMDS3NK	3-Fan Top Panel
EC45U2436SMDS6NK	6-Fan Top Panel
10-32 TAPPED RAILS	
EC45U2436TMDSMNK	Mesh Top Panel
EC45U2436TMDS3NK	3-Fan Top Panel
EC45U2436TMDS6NK	6-Fan Top Panel
PLEXIGLAS® Front Door, Mesh Rear Door, Solid Side Panels, Keyed Lock	
M6 RAILS	
EC45U2436SPMSMNK	Mesh Top Panel
EC45U2436SPMS3NK	3-Fan Top Panel
EC45U2436SPMS6NK	6-Fan Top Panel
10-32 TAPPED RAILS	
EC45U2436TPMSMNK	Mesh Top Panel
EC45U2436TPMS3NK	3-Fan Top Panel
EC45U2436TPMS6NK	6-Fan Top Panel
PLEXIGLAS Front Door, Split Mesh Rear Door, Solid Side Panels, Keyed Lock	
M6 RAILS	
EC45U2436SPDSMNK	Mesh Top Panel
EC45U2436SPDS3NK	3-Fan Top Panel
EC45U2436SPDS6NK	6-Fan Top Panel
10-32 TAPPED RAILS	
EC45U2436TPDSMNK	Mesh Top Panel
EC45U2436TPDS3NK	3-Fan Top Panel
EC45U2436TPDS6NK	6-Fan Top Panel
No Doors or Sides, Mesh Top Panel	
M6 RAILS	
EC45U2436SNNNMNN	Mesh Top Panel

CATALOG #	DESCRIPTION
84"H (45U) X 24"W X 42"D	
Mesh Front and Rear Doors, Solid Side Panels, Keyed Lock	
EC45U2442SMMSMYK	M6 Rails, Mesh Top Panel, Anti-Tip Legs
Mesh Front Door, Split Mesh Rear Door, Solid Side Panels, Keyed Lock	
EC45U2442SMDSMYK	M6 Rails, Mesh Top Panel, Anti-Tip Legs

CATALOG #	DESCRIPTION
84"H (45U) X 30"W X 32"D	
PLEXIGLAS Front Door, Mesh Rear Door, Solid Side Panels, Keyed Lock	
M6 RAILS	
EC45U3032SPMS3NK	3-Fan Top Panel
10-32 TAPPED RAILS	
EC45U3032TPMSMNK	Mesh Top Panel
EC45U3032TPMS3NK	3-Fan Top Panel
EC45U3032TPMS6NK	6-Fan Top Panel
PLEXIGLAS Front Door, Split Mesh Rear Door, Solid Side Panels, Keyed Lock	
M6 RAILS	
EC45U3032SPDS3NK	3-Fan Top Panel
10-32 TAPPED RAILS	
EC45U3032TPDSMNK	Mesh Top Panel
EC45U3032TPDS3NK	3-Fan Top Panel
EC45U3032TPDS6NK	6-Fan Top Panel

CATALOG #	DESCRIPTION
84"H (45U) X 30"W X 36"D	
PLEXIGLAS Front Door, Mesh Rear Door, Solid Side Panels, Keyed Lock	
M6 RAILS	
EC45U3036SPMS3NK	3-Fan Top Panel
10-32 TAPPED RAILS	
EC45U3036TPMSMNK	Mesh Top Panel
EC45U3036TPMSSNK	Solid Top Panel
EC45U3036TPMS3NK	3-Fan Top Panel
EC45U3036TPMS6NK	6-Fan Top Panel
PLEXIGLAS® Front Door, Split Mesh Rear Door, Solid Side Panels, Keyed Lock	
M6 RAILS	
EC45U3032SPDS3NK	3-Fan Top Panel
10-32 TAPPED RAILS	
EC45U3036TPDSMNK	Mesh Top Panel
EC45U3036TPDSSNK	Solid Top Panel
EC45U3036TPDS3NK	3-Fan Top Panel
EC45U3036TPDS6NK	6-Fan Top Panel



ELITE CABINETS

ELITE™ CABINETS (CONTINUED)

CATALOG #	DESCRIPTION
84"H (45U) X 30"W X 42"D	
Mesh Front and Rear Doors, Solid Side Panels, Keyed Lock	
EC45U3042SMMSMYK	M6 Rails, Mesh Top Panel, Anti-Tip Legs
Mesh Front Door, Split Mesh Rear Door, Solid Side Panels, Keyed Lock	
EC45U3042SMDSMYK	M6 Rails, Mesh Top Panel, Anti-Tip Legs

CATALOG #	DESCRIPTION
79"H (42U) X 30"W X 42"D	
Mesh Front and Rear Doors, Solid Side Panels, Keyed Lock	
M6 RAILS	
EC42U3042SMMSMNK	Mesh Top Panel
PLEXIGLAS Front Door, Mesh Rear Door, Solid Side Panels, Keyed Lock	

CATALOG #	DESCRIPTION
10-32 TAPPED RAILS	
EC42U3042TPMSMNK	Mesh Top Panel
EC42U3042TPMS6NK	6-Fan Top Panel
Mesh Front Door, Split Mesh Rear Door, Solid Side Panels, Keyed Lock	

CATALOG #	DESCRIPTION
M6 RAILS	
EC42U3042SMDSMNK	Mesh Top Panel
PLEXIGLAS® Front Door, Split Mesh Rear Door, Solid Side Panels, Keyed Lock	

CATALOG #	DESCRIPTION
10-32 TAPPED RAILS	
EC42U3042TPDSMNK	Mesh Top Panel
EC42U3042TPDS6NK	6-Fan Top Panel

CATALOG #	DESCRIPTION
79"H (42U) X 24"W X 42"D	
Mesh Front and Rear Doors, Solid Side Panels, Keyed Lock	
M6 RAILS	
EC42U2442SMMSMNK	Mesh Top Panel
Mesh Front Door, Split Mesh Rear Door, Solid Side Panels, Keyed Lock	

CATALOG #	DESCRIPTION
M6 RAILS	
EC42U2442SMDSMNK	Mesh Top Panel
Mesh Front Door, Split Mesh Rear Door, Solid Side Panels, Keyed Lock	

CATALOG #	DESCRIPTION
M6 RAILS	
EC42U3042SMDSMNK	Mesh Top Panel

CATALOG #	DESCRIPTION
72"H (38U) X 30"W X 32"D	
PLEXIGLAS Front Door, Mesh Rear Door, Solid Side Panels, Keyed Lock	

CATALOG #	DESCRIPTION
M6 RAILS	
EC38U3032SPMS3NK	3-Fan Top Panel

CATALOG #	DESCRIPTION
10-32 TAPPED RAILS	
EC38U3032TPMSMNK	Mesh Top Panel
EC38U3032TPMS1NK	Single-Fan Top Panel
EC38U3032TPMS3NK	3-Fan Top Panel
EC38U3032TPMS6NK	6-Fan Top Panel

CATALOG #	DESCRIPTION
PLEXIGLAS Front Door, Split Mesh Rear Door, Solid Side Panels, Keyed Lock	

CATALOG #	DESCRIPTION
M6 RAILS	
EC38U3032SPDS3NK	3-Fan Top Panel

CATALOG #	DESCRIPTION
10-32 TAPPED RAILS	
EC38U3032TPDSMNK	Mesh Top Panel
EC38U3032TPDS1NK	Single-Fan Top Panel
EC38U3032TPDS3NK	3-Fan Top Panel
EC38U3032TPDS6NK	6-Fan Top Panel

CATALOG #	DESCRIPTION
48"H (24U) X 24"W X 42"D	
Mesh Front and Rear Doors, Solid Side Panels, Keyed Lock	

CATALOG #	DESCRIPTION
M6 RAILS	
EC24U2442SMDSMNK	Mesh Top Panel
Mesh Front Door, Split Mesh Rear Door, Solid Side Panels, Keyed Lock	

CATALOG #	DESCRIPTION
M6 RAILS	
EC45U3032SPDS3NK	Mesh Top Panel
PLEXIGLAS Front Door, Mesh Rear Door, Solid Side Panels, Keyed Lock	

CATALOG #	DESCRIPTION
M6 RAILS	
EC24U2442SPMSMNK	Mesh Top Panel
PLEXIGLAS Front Door, Split Mesh Rear Door, Solid Side Panels, Keyed Lock	

CATALOG #	DESCRIPTION
M6 RAILS	
EC24U2442SPDSMNK	Mesh Top Panel
No Doors or Sides	

CATALOG #	DESCRIPTION
M6 RAILS	
EC24U2442SNNNMNN	Mesh Top Panel



ELITE™ CABINETS (CONTINUED)

CATALOG #

DESCRIPTION

48"H (24U) X 30"W X 32"D

PLEXIGLAS Front Door, Mesh Rear Door, Solid Side Panels, Keyed Lock

10-32 TAPPED RAILS

EC24U3032TPMSMNK Mesh Top Panel

EC24U3032TPMSSNK Solid Top Panel

EC24U3032TPMS1NK Single-Fan Top Panel

EC24U3032TPMS3NK 3-Fan Top Panel

EC24U3032TPMS6NK 6-Fan Top Panel

PLEXIGLAS Front Door, Split Mesh Rear Door, Solid Side Panels, Keyed Lock

10-32 TAPPED RAILS

EC24U3032TPDSMNK Mesh Top Panel

EC24U3032TPDSSNK Solid Top Panel

EC24U3032TPDS1NK Single-Fan Top Panel

EC24U3032TPDS3NK 3-Fan Top Panel

EC24U3032TPDS6NK 6-Fan Top Panel



EC45U2436SPDS3NK



EC45U2436SMDSSNK



EC45U2436SNNNNNN



ELITE™ CABINETS

Configure a cabinet online to your exact specs—we'll build and ship it in two business days

The Elite Cabinet family from Black Box® delivers more features and options than any other Black Box cabinet—more door and panel choices, more cable management and dual universal PDU mounting brackets.

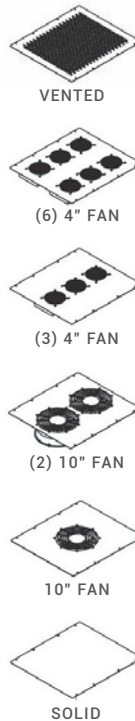
Plus, Elite Cabinets feature heavy-duty, welded steel construction and come with the protection of a lifetime Black Box Double Diamond™ warranty. The cabinets arrive fully assembled and ready to populate.

Elite Cabinets are specifically designed to be adaptable to your exact needs. Whether you need a high-airflow cabinet for your data center or a small, secure cabinet for an office, the Elite Cabinet family has exactly the cabinet for you.

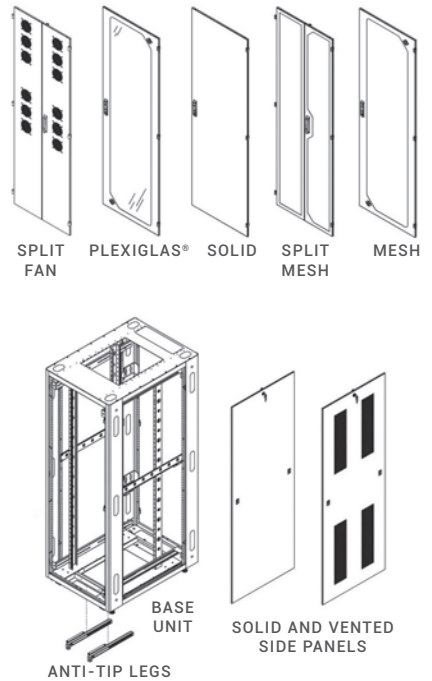
Select a preconfigured cabinet or have one customized to your specifications and shipped in only two business days. With more than 90 sizes and options, there are thousands of cabinet configurations possible. Our Black Box pre-sales engineers can help you specify the cabinet you need—FREE of charge.

What does EC45U2436SMDSSNK mean? It's not just alphabet soup. See the facing page for more information.

TOP PANELS:



DOOR OPTIONS:



ELITE™ CABINET WORKSHEET

Configuring an Elite Cabinet specific to your application is easy—use the worksheet below

Use the codes (below) to fill in the line in the middle of the page, matching colors as you go. When you're done, call us with the number, and we'll have your custom-built cabinets on your doorstep in a flash.

The example below is a 79"H (42U) x 30"W x 42"D cabinet with M6 rails, a mesh front door, a split mesh rear door, solid side panels, a mesh top, anti-tip legs and keyed locks.

STEP 1:

Choose your enclosure

E C 4 2 U 3 0 4 2 S M D S M Y K

48"H (24U) X 24"W X 42"D

E C 2 4 U 2 4 4 2

48"H (24U) X 30"W X 32"D

E C 2 4 U 3 0 3 2

72"H (38U) X 24"W X 32"D

E C 3 8 U 2 4 3 2

72"H (38U) X 24"W X 36"D

E C 3 8 U 2 4 3 6

72"H (38U) X 30"W X 32"D

E C 3 8 U 3 0 3 2

72"H (38U) X 30"W X 36"D

E C 3 8 U 3 0 3 6

79"H (42U) X 24"W X 42"D

E C 4 2 U 2 4 4 2

79"H (42U) X 30"W X 42"D

E C 4 2 U 3 0 4 2

84"H (45U) X 24"W X 36"D

E C 4 5 U 2 4 3 6

84"H (45U) X 24"W X 42"D

E C 4 5 U 2 4 4 2

84"H (45U) X 30"W X 32"D

E C 4 5 U 3 0 3 2

84"H (45U) X 30"W X 36"D

E C 4 5 U 3 0 3 6

84"H (45U) X 30"W X 42"D

E C 4 5 U 3 0 4 2

84"H (45U) X 30"W X 48"D

E C 4 5 U 3 0 4 8



STEP 2:

Choose your rail type

S
M6 RAILS WITH SQUARE HOLES

T
10-32 TAPPED RAILS

STEP 3:

Choose your front door

N S
NONE SOLID

M D
MESH SPLIT MESH

P F
PLEXI SPLIT FAN DOOR

STEP 4:

Choose your rear door

N S
NONE SOLID

M D
MESH SPLIT MESH

P F
PLEXI SPLIT FAN DOOR

STEP 5:

Choose your side panels

N S
NONE SOLID

M
MESH

STEP 6:

Choose your cabinet top

N S
NONE SOLID

M
MESH

1
1-FAN UNIT (10" FAN, 550-CFM)

3
3-FAN UNIT (4" FANS, 225-CFM)

2
2-FAN UNIT (10" FANS, 1100-CFM)

6
6-FAN UNIT (4" FANS, 450-CFM)

STEP 7:

Decide on anti-tip legs

Y N
YES NO

STEP 8:

Choose your lock*

N
NONE

K
KEYED

C
COMBINATION

*Doors have either a keyed or a combination lock. Choose "None" when there is no door.

NOTE: Protect your IT investments. Environmental monitoring is a cost-effective, proactive way to protect your investments from climate, overheating, theft, etc. Find out more about AlertWerks™ on page 77, or at blackbox.com/AlertWerks.



ELITE CABINETS

ADD ACCESSORIES TO ADD FUNCTION

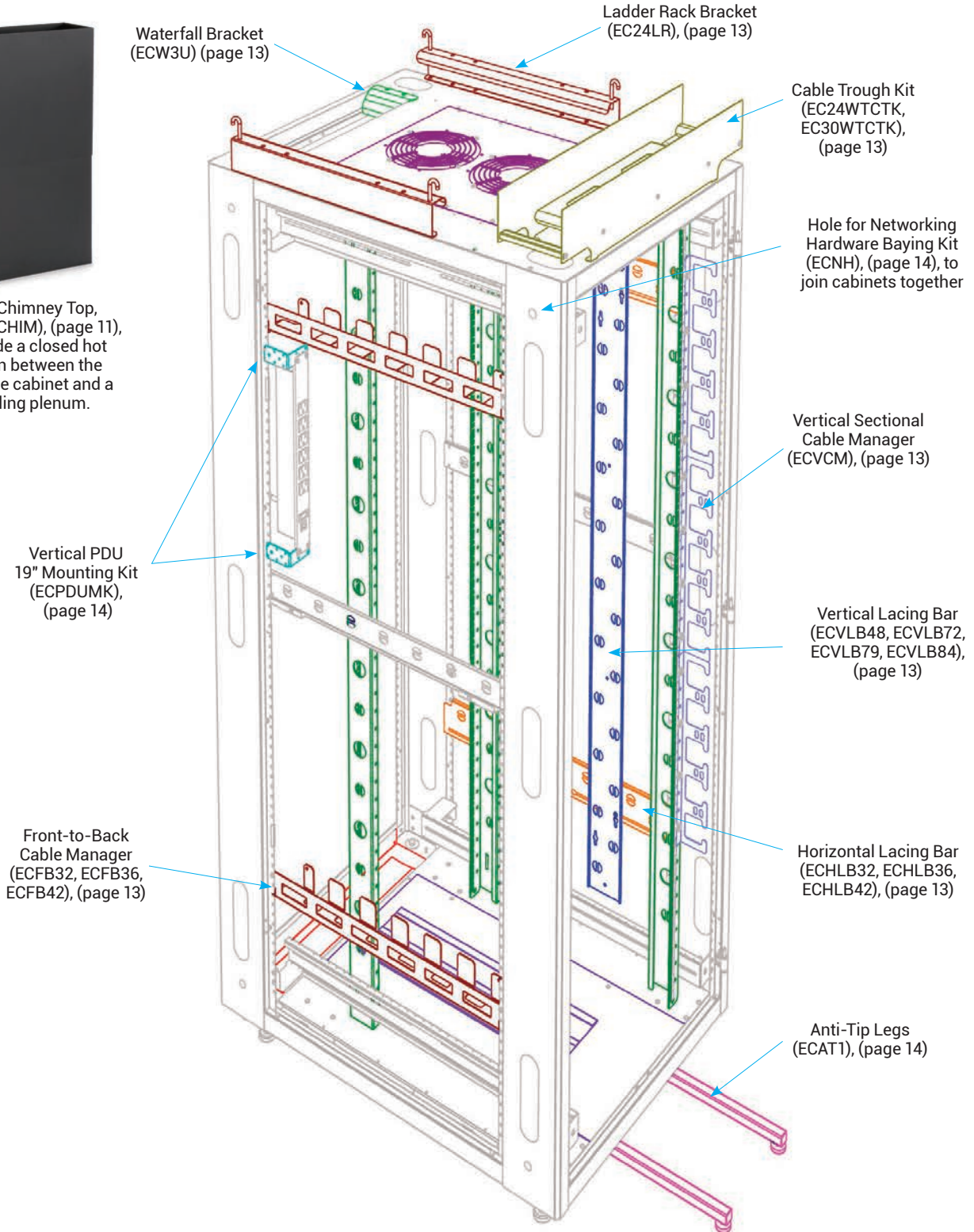
After you select the right cabinet configuration, it's time to accessorize your cabinet with cable management, keyboard trays, and all the parts that make your Elite™ Cabinet perfect for your application.

CHANGE YOUR CABINET CONFIGURATION

If you already own an Elite Cabinet, it's easy to change top panels and other parts when your requirements change — parts such as top panels can be changed in a just few minutes with basic tools.

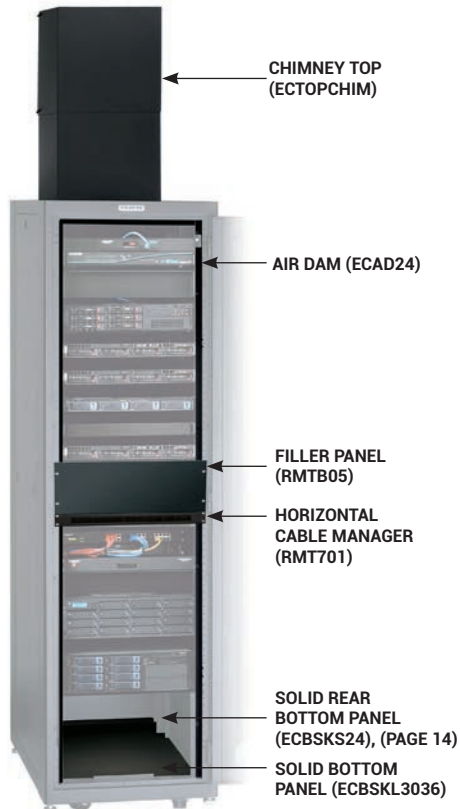


Order a Chimney Top, (ECTOPCHIM), (page 11), to provide a closed hot air return between the top of the cabinet and a drop ceiling plenum.



ELITE™ CABINET ACCESSORIES

The right accessories improve your cabinet's cooling efficiency



CHIMNEY TOP

- Provides a closed hot air return between the top of an Elite cabinet and a drop ceiling plenum
- Includes a chimney for the Elite Cabinet small 3U top opening plus a solid panel to cover the large top opening

CATALOG #	DESCRIPTION
ECTOPCHIM	Chimney Top
ECTOPCHIMFT	Fan Tray for Chimney

AIR DAMS

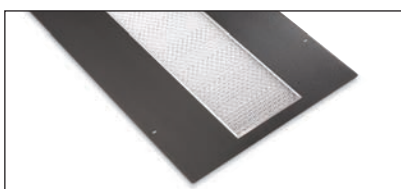
- Mount on the front rails of Elite Cabinets
- Keep cool air in the front of the cabinet to increase cooling efficiency

CATALOG #	DESCRIPTION
ECAD24	Air Dams for 24" Wide 42U and 45U Cabinets
ECAD30	Air Dams for 30" Wide 42U and 45U Cabinets
ECAD24S	Air Dams for 24" Wide 24U and 38U Cabinets
ECAD30S	Air Dams for 30" Wide 24U and 38U Cabinets

FILLER PANELS

- Keep cool air from dissipating before it reaches the top of the rack
- Matte black finish
- Mount easily to a 19" cabinet or rack with four included 10-32 screws

CATALOG #	DESCRIPTION
RMTB01	1U (1.75")
RMTB02	2U (3.5")
RMTB03	3U (5.25")
RMTB04	4U (7.00")
RMTB05	5U (8.75")
RMTB06	6U (10.50")



BOTTOM FILTER KITS

- Fit in the large bottom opening of Elite Cabinets
- Permit air circulation while filtering out dust and other airborne debris
- Replacement filters available

CATALOG #	DESCRIPTION
ECBFL2436	For 24"W x 36"D Cabinets
ECBFL2442	For 24"W x 42"D Cabinets
ECBFL3032	For 30"W x 32"D Cabinets
ECBFL3036	For 30"W x 36"D Cabinets
ECBFL3042	For 30"W x 42"D and 48"D Cabinets



ECTOPF

TOP FAN PANELS

- Fit the large 12U top opening
- Deliver up to 1100 cfm of ventilation

CATALOG #	DESCRIPTION
ECTOPF	3-Fan 225-cfm
ECTOP2F	6-Fan 450-cfm
ECTOPF10	Single 10" Fan 550-cfm
ECTOP2F10	Dual 10" Fan 1100-cfm



ELITE™ COLD AISLE CONTAINMENT SYSTEM

Use this kit to shut off the aisle ends to contain cool air

CATALOG #	DESCRIPTION
EC42U48WCD	42U
EC45U48WCD	45U

ELITE CABINETS

SPLIT FAN DOORS

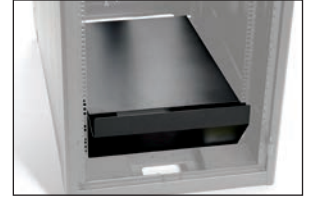
- Doors can be mounted on the front or rear of the cabinet
- For 220-VAC power environments
- IEC-60320-C13 outlet; power cord is not included

CATALOG #	DESCRIPTION
EC480324SF220	For 24U 48" x 24"W Cabinets
EC480330SF220	For 24U 48" x 30"W Cabinets
EC720330SF220	For 38U 72" x 30"W Cabinets
EC790324SF220	For 42U 79" x 24"W Cabinets
EC790330SF220	For 42U 79" x 30"W Cabinets
EC840324SF220	For 45U 84" x 24"W Cabinets
EC840330SF220	For 45U 84" x 30"W Cabinets



AIR FUNNEL KITS

Require only 2U of mounting space



CATALOG #	DESCRIPTION
ECAIRFLOW36	24"W x 36"D
ECAIRFLOW42	24"W x 42"D and 30"W x 42"D
WITH DUAL FAN TRAY	
ECAIRFLOW2436FT	For 24"W x 36"D
ECAIRFLOW2442FT	For 24"W x 42"D

HIGH-FLOW MESH DOOR

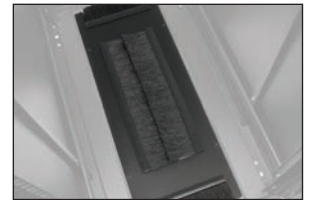
- Higher open area than standard mesh doors for optimal airflow to hot servers
- EC790224MHF provides 840.2 square inches of open area; EC840224MHF provides 914.4 square inches of open area

CATALOG #	DESCRIPTION
EC790224MHF	For 42U" x 24"W Cabinets
EC840224MHF	For 45U" x 24"W Cabinets



BOTTOM BRUSH GROMMET KITS

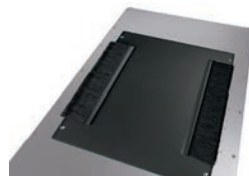
CATALOG #	DESCRIPTION
ECBGKL2436	For 24"W x 36"D
ECBGKL2442	For 24"W x 42"D
ECBGKL3032	For 30"W x 32"D
ECBGKL3036	For 30"W x 36"D
ECBGKL3042	For 30"W x 42"D and 48"D
ECBBGKS24	Rear Brush, for 24"W
ECBBGKS30	Rear Brush, for 30"W



BRUSH GROMMET KIT FOR 3U OPENING

- Brushes enable you to run cable into the cabinet while keeping out dust and contaminants
- Can be installed along with the Elite Cabinet Waterfall Brackets for 3U Top Opening (ECW3U), (page 13)

CATALOG #	DESCRIPTION
ECBGK3U	Brush Grommet Kit for 3U Top Opening



BRUSH GROMMET TOP PANEL

- Top panel keeps your cable entry organized and clean
- Fits top opening in Elite Cabinets
- Includes grommet kit and mounting hardware

CATALOG #	DESCRIPTION
ECTOPB	Brush Grommet Top Panel

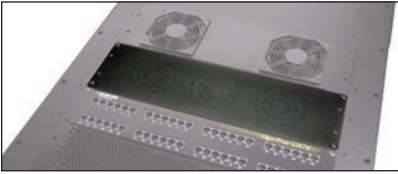


GLAND PLATE

- Fits the top rear 3U opening on an Elite Cabinet or an Elite Wallmount Cabinet
- Enables you to route cables into the cabinet while sealing off the opening to help prevent dust or to control ventilation

CATALOG #	DESCRIPTION
EC3UGP	Gland Plate for 3U Top Opening





CONDUIT KNOCKOUT PANEL

Fits the small 3U opening on the top of Elite™ Cabinets

- Three knockout plates on 5" centers enable you to route 1", 2" or 3" conduit

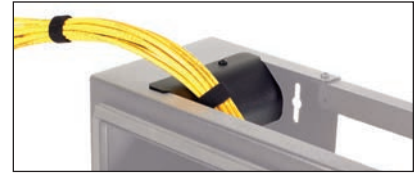
CATALOG #	DESCRIPTION
ECP3U	For 3U Top Opening



FRONT-TO-BACK CABLE MANAGERS

- Manage cables horizontally from the front to the back of the cabinet

CATALOG #	DESCRIPTION
ECFB32	For 30"W x 32"D Cabinets
ECFB36	For 30"W x 36"D Cabinets
ECFB42	For 30"W x 42"D and 48"D Cabinets



WATERFALL BRACKETS FOR 3U TOP OPENING

Fit the small 3U opening on the top of Elite™ Cabinets

- Enable you to maintain bend radius when routing cable into the top of the cabinet

CATALOG #	DESCRIPTION
ECW3U	For 3U Top Opening

VERTICAL LACING BARS

- Requires a Horizontal Lacing Bar for mounting (ECHLB32, ECHLB36, ECHLB42,)
- Order (2) for a 48"H cabinet, (3) for a 72"H or 79"H cabinet or (4) for an 84"H cabinet

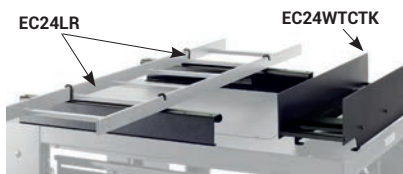
CATALOG #	DESCRIPTION
VERTICAL LACING BARS FOR ELITE CABINETS	
ECVLB48	For 48"H Cabinets
ECVLB72	For 72"H Cabinets
ECVLB79	For 79"H Cabinets
ECVLB84	For 84"H Cabinets
ECVCM	Vertical Sectional Cable Manager



HORIZONTAL LACING BARS

- Attach cables to this bar to keep your Elite Cabinet organized and neat

CATALOG #	DESCRIPTION
ECHLB32	For 30"W x 32"D Cabinets
ECHLB36	For 30"W x 36"D Cabinets
ECHLB42	For 30"W x 42"D & 48"D Cabinets



CABLE TROUGH KITS

- Route cables across the top of an Elite Cabinet in multicabinet installations
- Install anywhere along the top

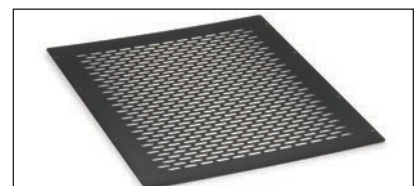
CATALOG #	DESCRIPTION
EC24WTCTK	For 24"W Cabinets
EC30WTCTK	For 30"W Cabinets
EC24LR	Ladder Rack Bracket, 24"W



LIGHT KIT

- Illuminates your Elite Cabinet to make your work easier
- 18-watt fluorescent light

CATALOG #	DESCRIPTION
ECLK	Light Kit

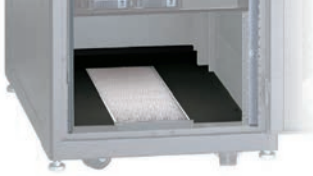


SOLID AND PERFORATED TOP PANELS

- Fit the large top opening on Elite Cabinets
- For Top Fan Panels, see page 11

CATALOG #	DESCRIPTION
ECTOPS	Solid
ECTOPP	Perforated

ELITE CABINETS



SOLID REAR BOTTOM PANELS

- Cover the cable cutout on the bottom rear of the Elite Cabinets
- To cover the larger opening at the bottom of the cabinet, order Solid Bottom Panels

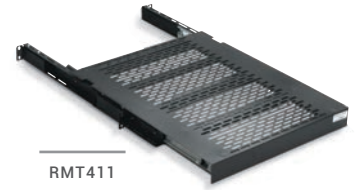
CATALOG #	DESCRIPTION
ECBSKS24	24"W
ECBSKS30	30"W



SOLID BOTTOM PANELS

This panel covers the large bottom opening in Standard Elite Cabinets

CATALOG #	DESCRIPTION
ECBSKL2436	24"W x 36"D
ECBSKL2442	24"W x 42"D
ECBSKL3032	30"W x 32"D
ECBSKL3036	30"W x 36"D
ECBSKL3042	30"W x 42"D and 48"D



RMT411

HEAVY-DUTY SLIDING SERVER SHELF

Mount heavy servers or other heavy equipment

- Weight capacity of 125 pounds
- Provides easy access to back of your servers and other equipment

CATALOG #	DESCRIPTION
RMT411	17.5" W x 29"D



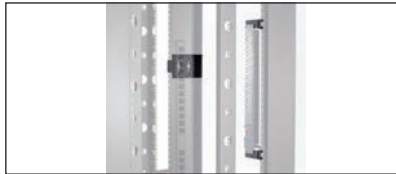
RM410-R2

FIXED VENTED 4-POINT SHELVES

Mount heavy servers or other heavy equipment

- Weight capacity of 50 pounds
- Vents improve air circulation

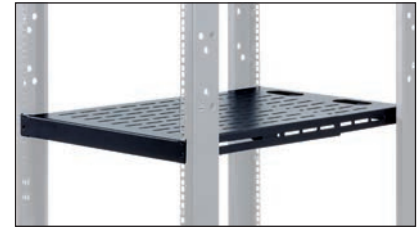
CATALOG #	DESCRIPTION
RM399-R2	200-lb. Capacity, 19"D
RM403-R2	150-lb. Capacity, 27.25"D
RM410-R2	150-lb. Capacity, 30"D



PDU MOUNTS

Vertical and Dual PDU models available

CATALOG #	DESCRIPTION
VERTICAL PDU MOUNTING KIT	
ECPDUMK	19", 0U
DUAL PDU MOUNTING BRACKETS	
ECPDUMK	For 24"W Cabinets
ECPDUMK	For 30"W Cabinets



RM047-R2

TOOL-LESS TELESCOPING SHELVES

Adjust to virtually any cabinet depth

- Easy installation—no tools required
- Support up to 150 pounds

CATALOG #	DESCRIPTION
RM047-R2	23.6"—35.4"D
RM049-R2	35.4"—47.2"D



ANTI-TIP LEGS

- Help prevent your cabinet from tipping over
- Project 11" from base of cabinet

CATALOG #	DESCRIPTION
ECAT1	Anti-Tip Legs



23" MOUNTING KITS FOR 30" ELITE CABINETS

- Enable you to convert standard 19" rails to 23" rails
- Include four (4) brackets and eight (8) screws

CATALOG #	DESCRIPTION
EC23MK32	For 30"W x 32"D Cabinets
EC23MK36	For 30"W x 36"D Cabinets
EC23MK42	For 30"W x 42"D Cabinets



NETWORKING HARDWARE/ BAYING KIT

- Kit for baying or networking two Elite Cabinets together.
- Includes (4) 5/16 wing nuts, (4) 5/16 thumbscrews with shoulder, (4) 5/16 split lock washers, and (8) 5/16 flat washers

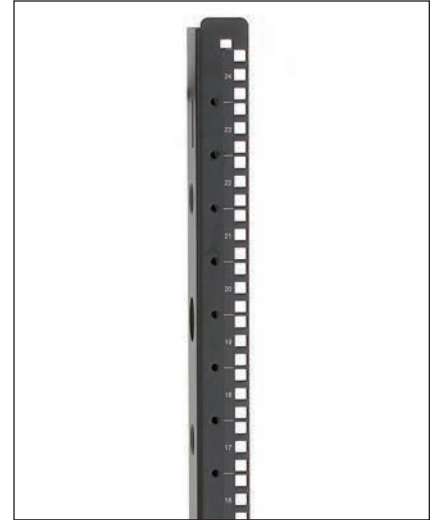
CATALOG #	DESCRIPTION
ECNH	Networking Hardware/ Baying Kit



EXTRA SET OF RAILS

- Add an extra set to mount shallow patch panels or PDUs behind equipment on the primary rails
- Choose from M6 square holes or 10-32 tapped holes

CATALOG #	DESCRIPTION	CATALOG #	DESCRIPTION
M6		10-32	
EC48M6	For 48"H Cabinets	EC48T	For 48"H Cabinets
EC72M6	For 72"H Cabinets	EC72T	For 72"H Cabinets
EC79M6	For 79"H Cabinets	EC79T	For 79"H Cabinets
EC84M6	For 84"H Cabinets	EC84T	For 84"H Cabinets



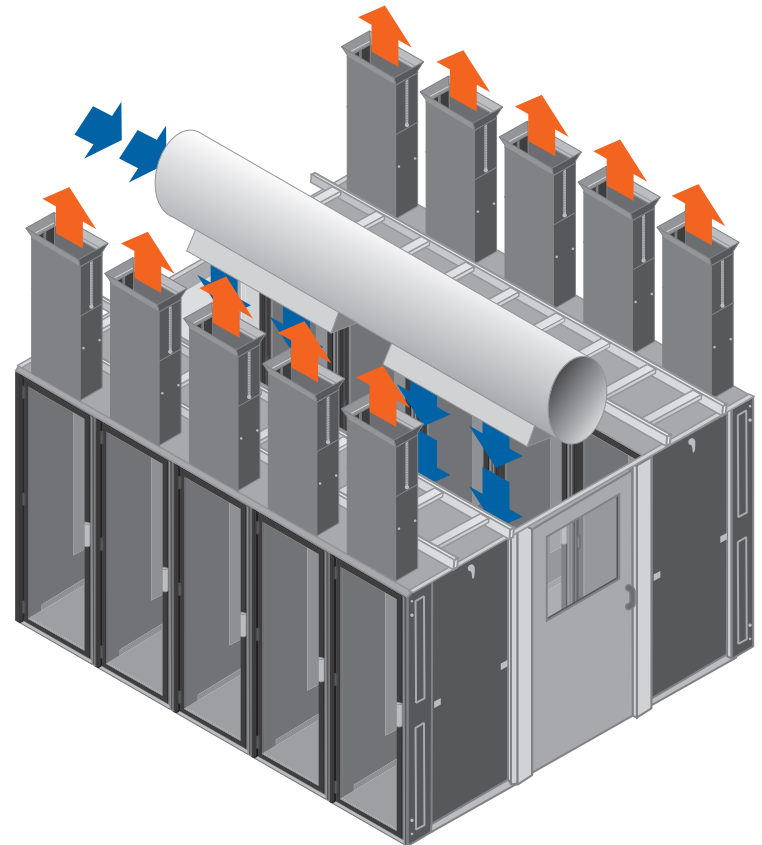
BLACK BOX CUSTOM SOLUTIONS

**DON'T SEE WHAT YOU NEED?
CHANCES ARE WE CAN BUILD IT.**

Whether you manage a small-office network or a large data center, you know it can be difficult to pin down an enclosure that:

- Fits your space
- Holds components compactly and securely
- Leaves room for expansion
- Provides adequate cooling
- Has room for power distribution
- Manages cable neatly
- Makes components easy to access
- Locks when you need it to

You can count on Black Box to engineer a cabinet solution to match your space and application. Black Box engineers have been designing data centers for more than 40 years—let us use our experience to help you build yours.



Typical hot aisle/cold aisle configuration with hot air vent to the plenum via a Chimney Top (ECTOPCHIM), (page 11). Also shown is the Cold Aisle Containment System (EC45U48WCD), (page 11).

