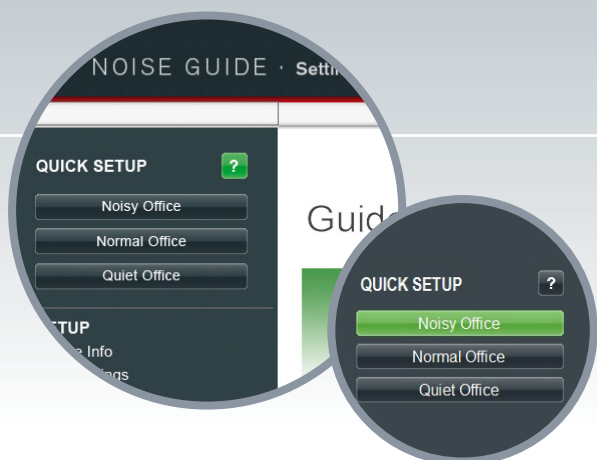


Jabra[®] NOISE GUIDE

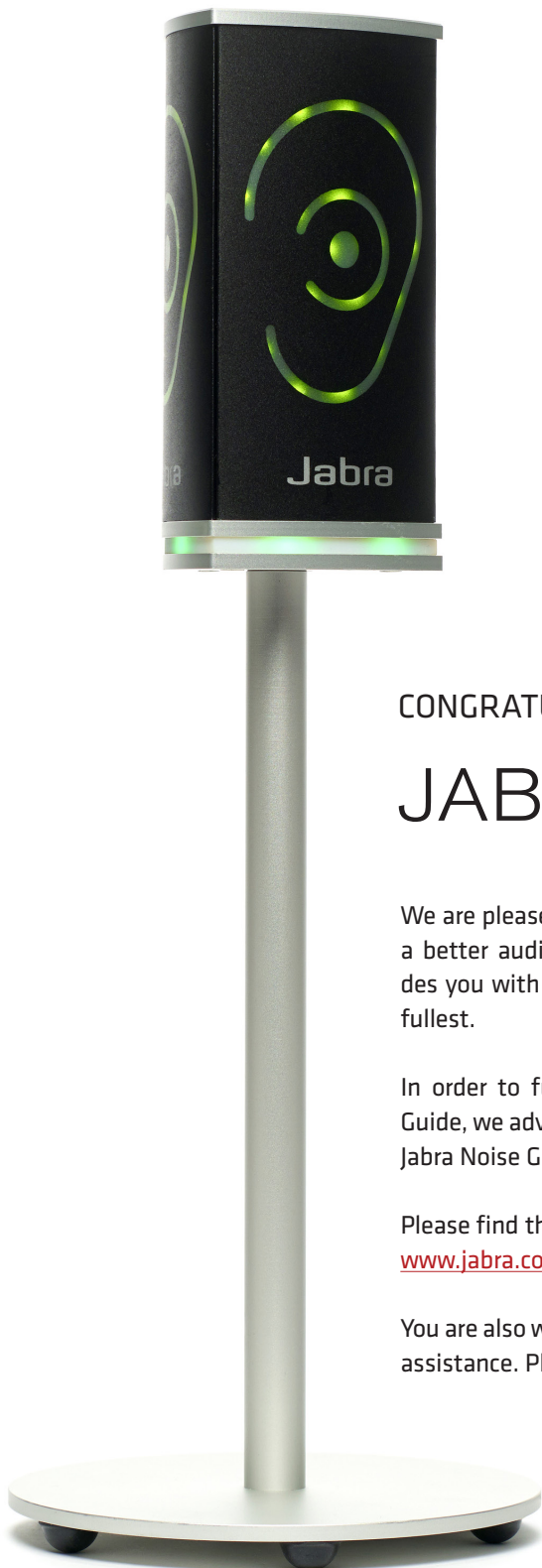
Manual - UK



www.jabra.com/support

TABLE OF CONTENTS

CONGRATULATIONS ON YOUR NEW JABRA NOISE GUIDE	3
BEFORE YOU START	4
Box Contents	4
Installing the device	4
How to insert the USB memory	5
How does Jabra Noise Guide work?	5
Mounting – Aluminum Table Stand	6
SOFTWARE SETUP	8
Software Installation	8
Set time	8
Formatting the USB-key	9
Configuration	10
1. Direct configuration	10
2. Export setup to USB	10
OPERATING THE SOFTWARE	11
QUICK Setup	11
Setup	12
• Device information	13
• Light Settings	15
• User Manual	17
• About Jabra Noise Guide	17
Measurements Data	18
• Live Measurement	18
Navigating in the Software	20
• Reading the graph	20
• Show Marker	21
• Zoom funktion	22
• Measurement Library	24
• The CSV file – what you see	25
• Import data from USB	26
Factory Settings	26
FAQ	27
MAINTENANCE	27
Desinfection / cleaning	27
TECHNICAL SPECIFICATIONS	27
Jabra Noise Guide Software	27
Jabra Noise Guide Specifications	27



CONGRATULATIONS ON YOUR NEW

JABRA NOISE GUIDE

We are pleased that you have chosen one of our products to help you create a better auditive environment for yourself and others. This manual provides you with information on how to take advantage of your product to the fullest.

In order to fully understand the features and possibilities of Jabra Noise Guide, we advice you to read this manual carefully before you start using your Jabra Noise Guide.

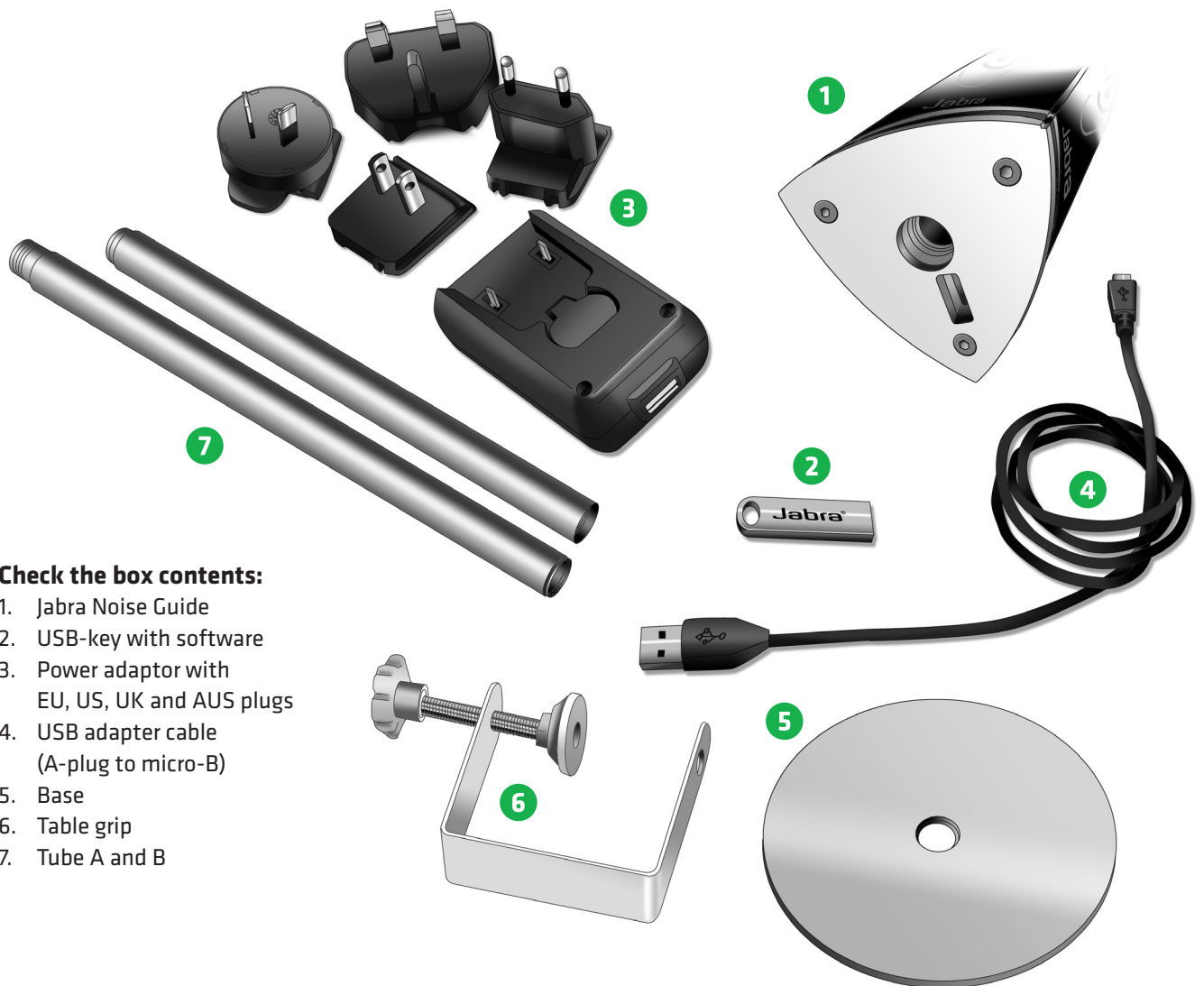
Please find the latest software and manual updates on our web site:

www.jabra.com/support

You are also welcome to reach out to your local Jabra Support Team for further assistance. Please go to www.jabra.com/support for further information.

BEFORE YOU START

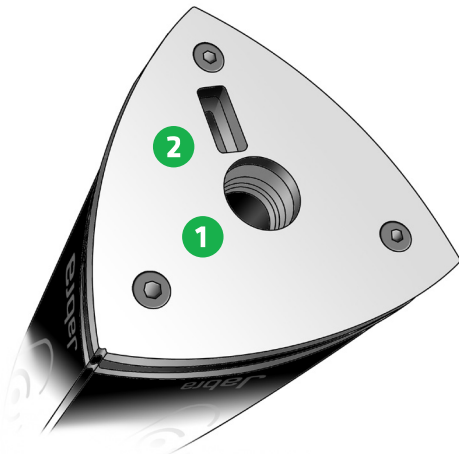
BOX CONTENTS



Check the box contents:

1. Jabra Noise Guide
2. USB-key with software
3. Power adaptor with EU, US, UK and AUS plugs
4. USB adapter cable (A-plug to micro-B)
5. Base
6. Table grip
7. Tube A and B

INSTALLING THE DEVICE

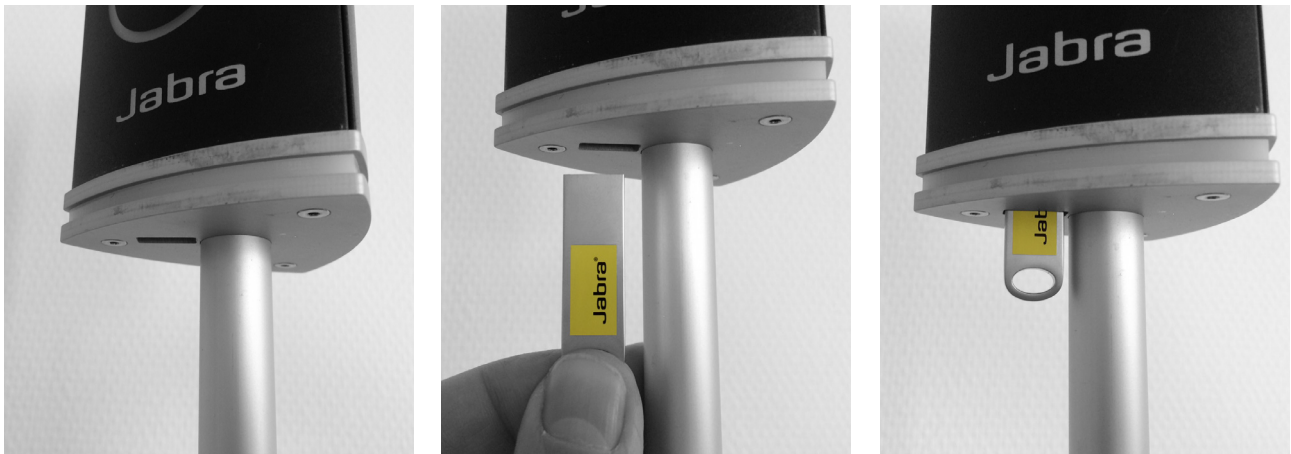


Jabra Noise Guide has 2 inputs at the bottom of the device.

1) A micro USB for power supply and export of data via a PC.

2) A standard USB input for exporting data from the internal log memory via the USB, and for offline configuration.

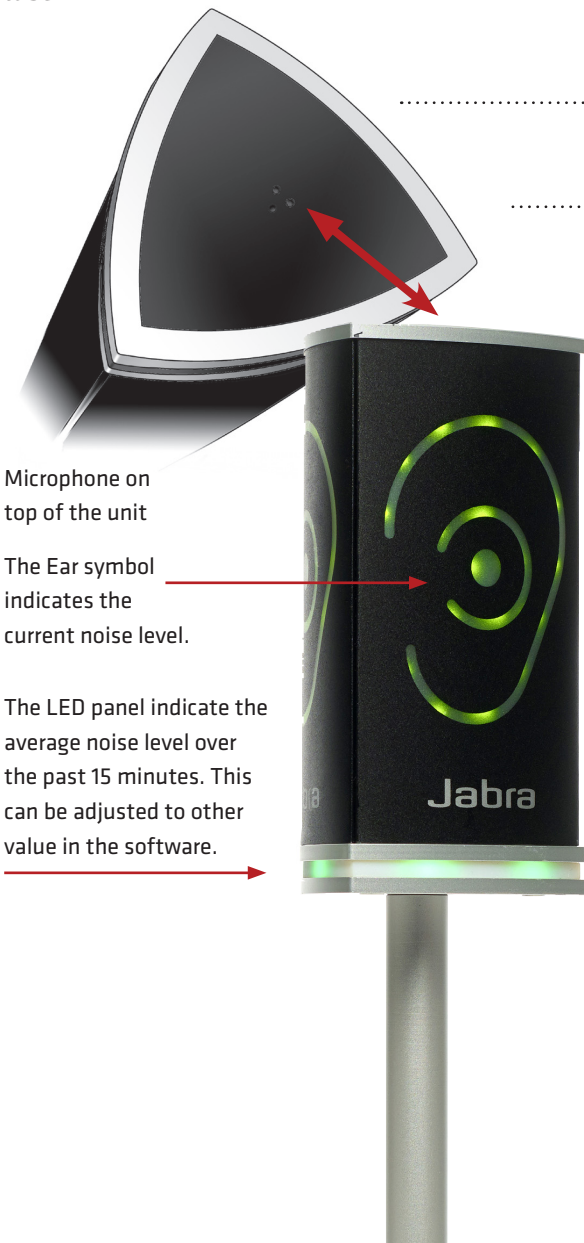
HOW TO INSERT THE USB MEMORY STICK IN THE NOISE GUIDE



1. Face the Noise Guide, so you have the USB port on the left from the tube.

2. Insert the USB memory stick with the JABRA logo facing forward.

HOW DOES JABRA NOISE GUIDE WORK?



Microphone on top of the unit

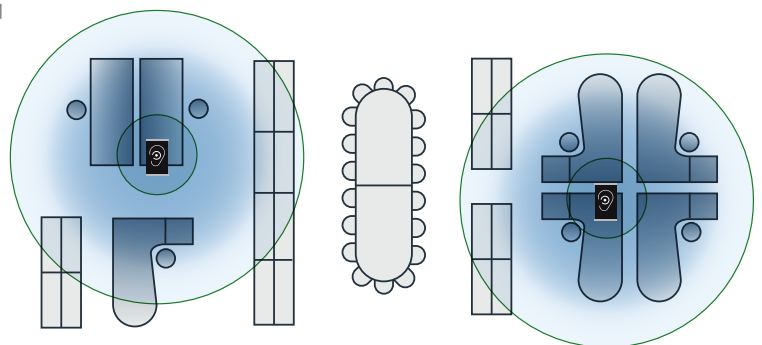
The Ear symbol indicates the current noise level.

The LED panel indicate the average noise level over the past 15 minutes. This can be adjusted to other value in the software.

Jabra Noise Guide provides you with 2 types of measurements, simultaneously. The ear symbol indicates the state of the current noise level while the LED panel at the bottom of the device indicates the average noise level over the past 15 minutes. This can be adjusted to other value in the software.

MEASURING RANGE

The Jabra Noise Guide has a measuring range of approximately 5 meters – Illustration: Open Space office.



MOUNTING – ALUMINUM TABLE STAND



1

CONTENT:

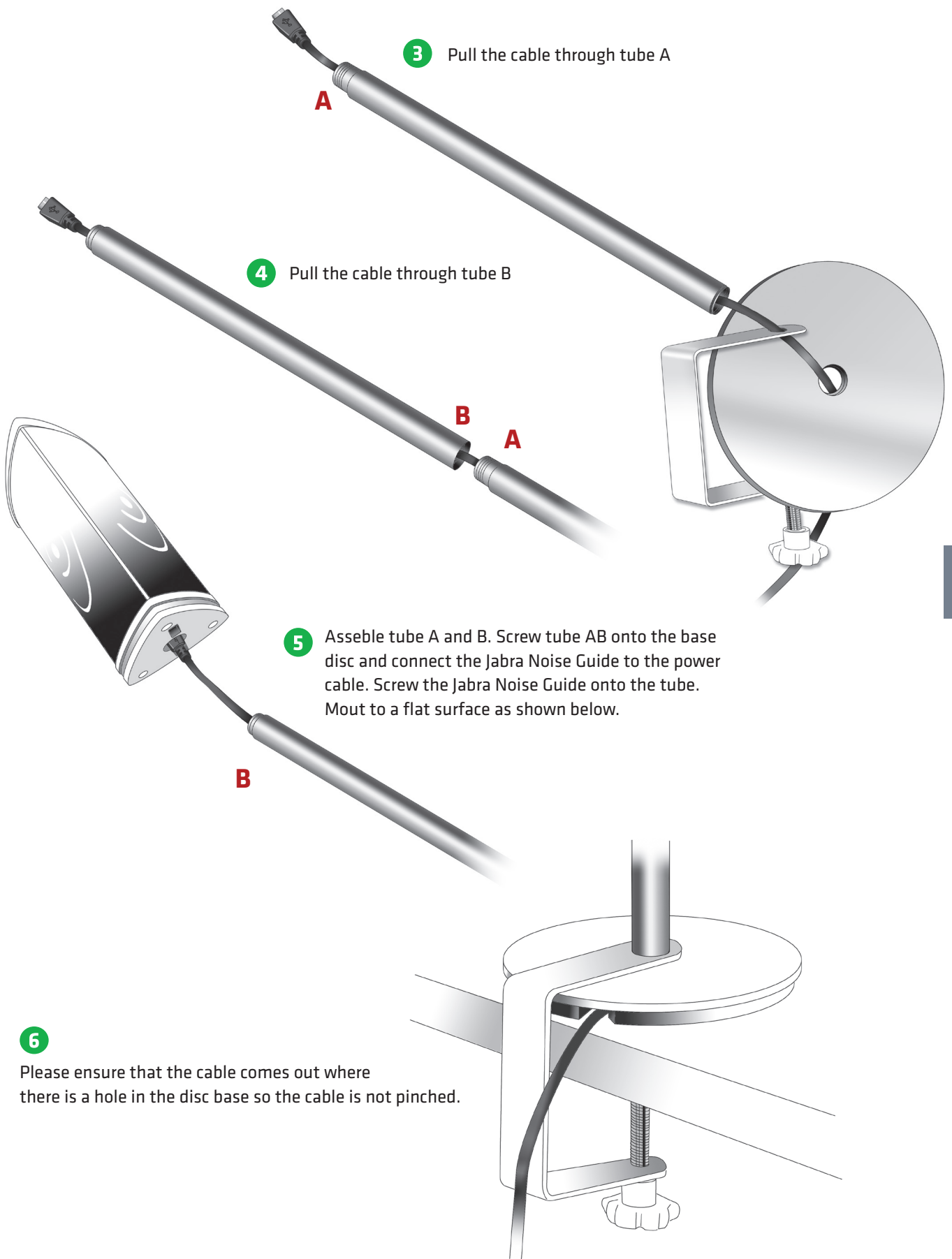
- Base
- Table grip
- Tube A
- Tube B

2

Pass the cable through the disc base, and then through the hole in the table grip.



MOUNTING – ALUMINUM TABLE STAND



SOFTWARE SETUP

SOFTWARE INSTALLATION

Please find the software on the included USB key.

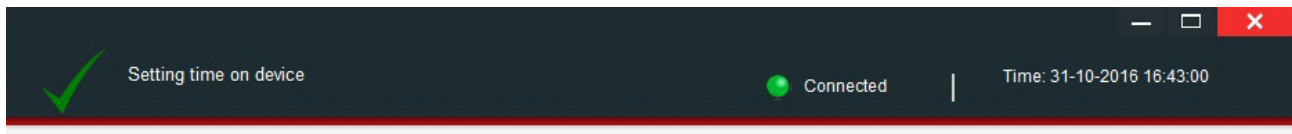
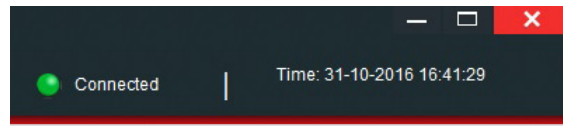
When you have installed the software, make sure to check for software updates to ensure that you are always updated with the latest version. Read more about this in the chapter "[About Jabra Noise Guide](#)" p. 17.

SET TIME

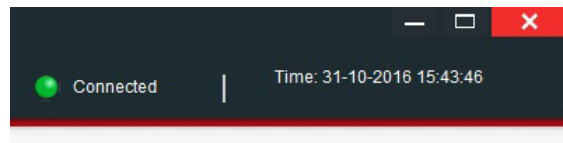
Jabra Noise Guide has a built-in time and date function that will set automatically the first time you connect the device to your PC.

Note! You need to update the internal clock when you change from summertime to wintertime or vice versa.

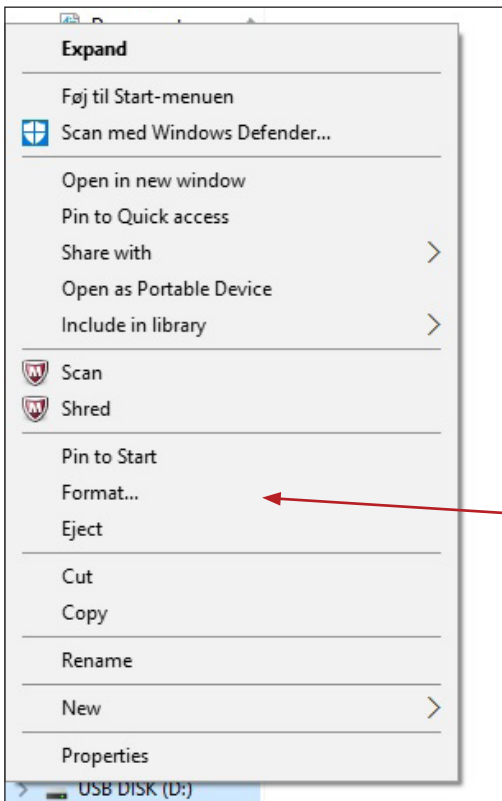
1. Connect your Jabra Noise Guide to a PC
2. Hold the arrow over the clock in the upper right corner of the screen



3. Left click on mouse. You will see the text "Setting time on device".
4. The internal clock is now updated.



FORMATTING THE USB-KEY



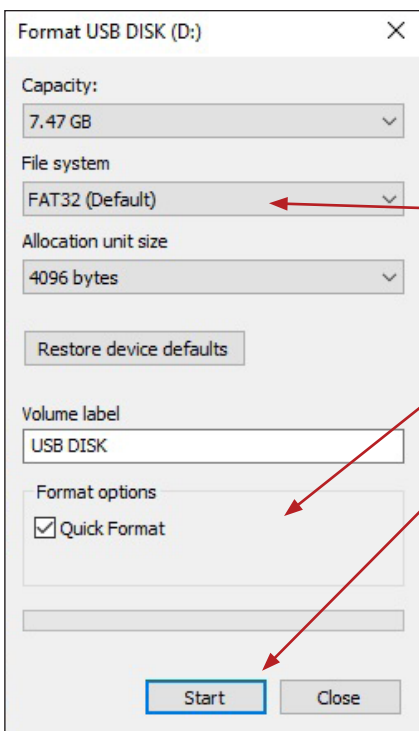
The USB key included is formatted in the format called "FAT32".

Read more about the functionality of the USB-key in the chapter:

"Software Setup" under ["Export setup to USB" p. 10.](#)

PLEASE NOTE! Remember to export any files you may have on your USB key before formatting, as the formatting will override any existing files.

1. Connect the USB key to your PC.
2. Right-click on the USB-drive.
3. Select "Format" from the drop-down menu.

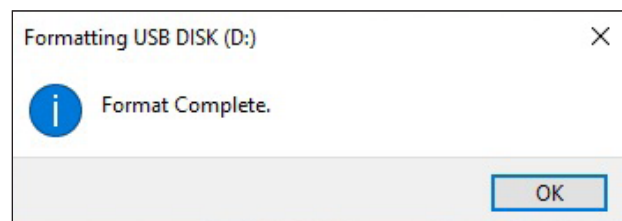


4. Select "Fat 32" under File System.

5. Check the box "Quick Format"

6. Click "Start"

7. The USB key is now ready for use.



WE RECOMMEND that you format the USB memory stick before either reading log data from the internal memory of the Jabra Noise Guide to the USB memory stick, or transferring a new configuration by USB to the Jabra Noise Guide.

CONFIGURATION

There are 2 ways of saving your configurations:

1. Connect the device directly to your PC while performing the configuration.
2. Uploading your configuration to the USB-key.

1. DIRECT CONFIGURATION:

Connect the device directly to your PC. Click "Configure" every time you have changed settings. This way, your settings will be saved directly on the device.

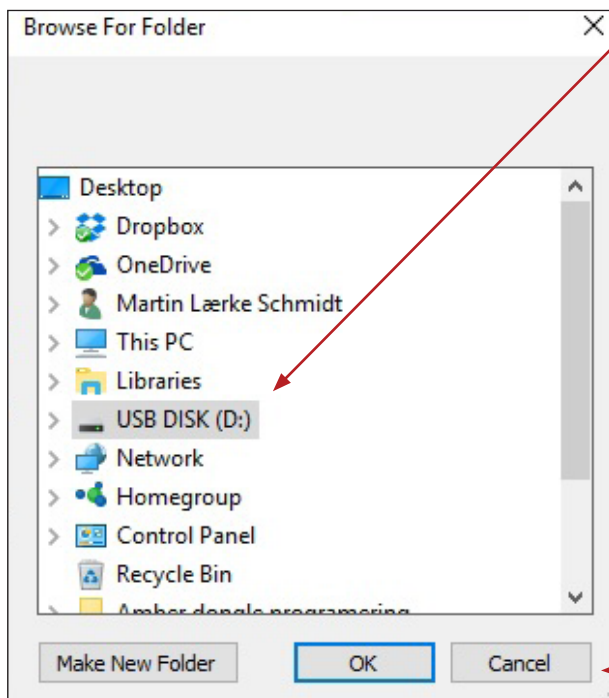
2. EXPORT SETUP TO USB:

Exporting the configuration to the USB-key is useful if you need to apply the same settings to multiple devices.

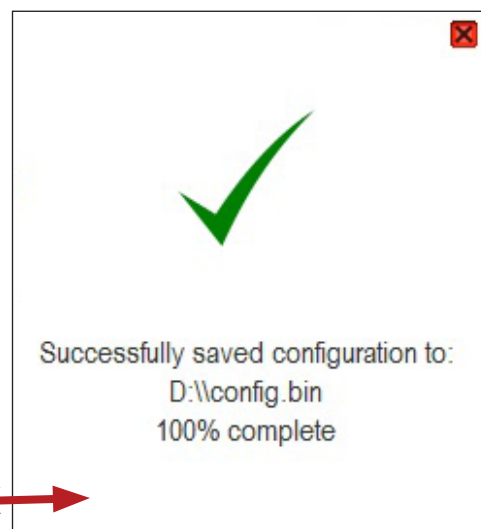
Export setup to USB

1. Insert the included USB-key.
2. Choose your settings.
3. Click "Export Setup to USB".

10



4. Save your settings to the USB-key and click "OK".
5. The pop-up window confirms that you have saved your configuration successfully.

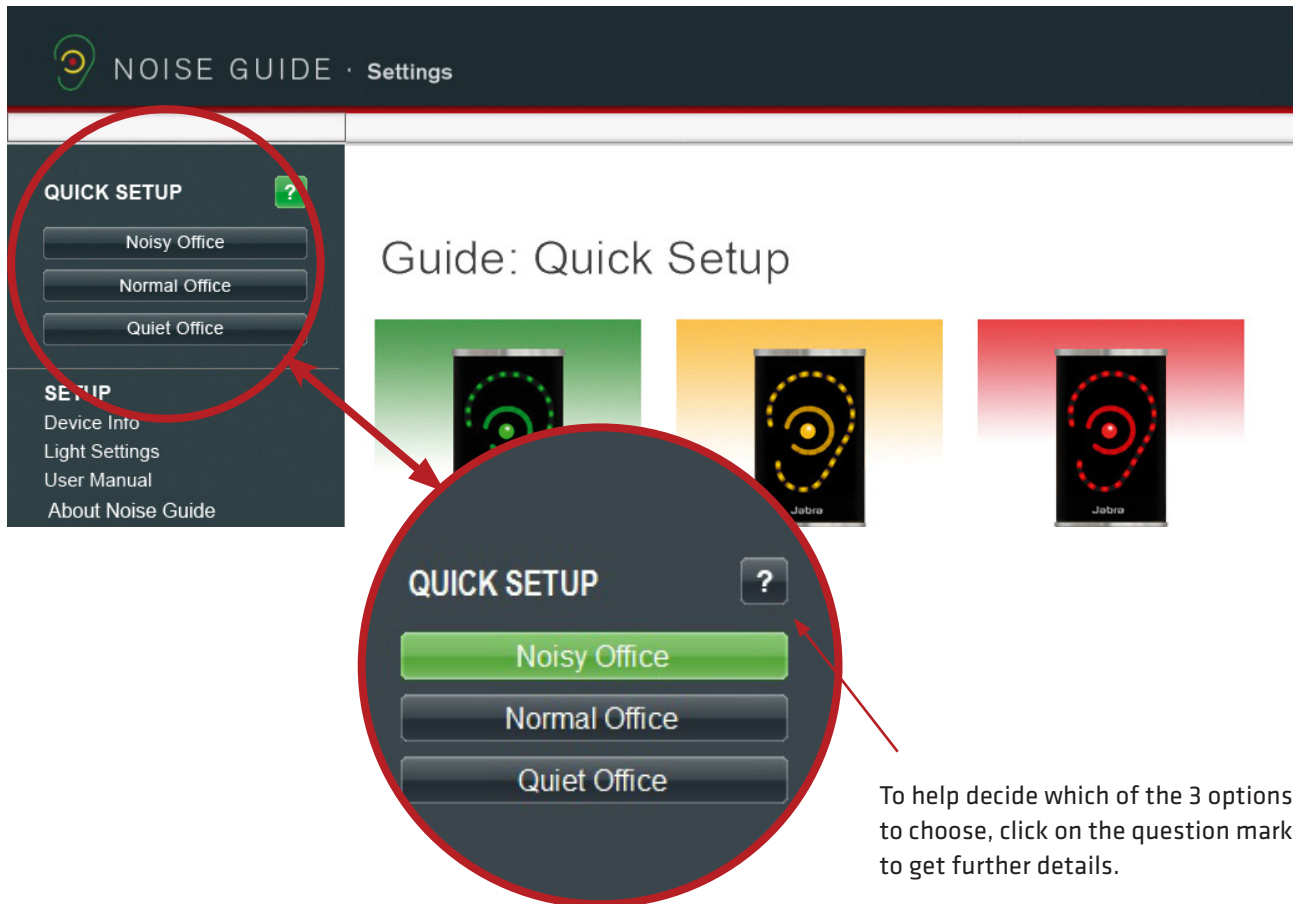


6. Connect the device to a power source and insert the USB-key. The Ear symbol will light green for approx. 5 seconds to indicate that your configuration has been exported successfully.

OPERATING THE SOFTWARE

QUICK SETUP

There are 3 types of standard settings to choose from.



NOISE GUIDE · Settings

QUICK SETUP ?

- Noisy Office
- Normal Office
- Quiet Office

SETP

- Device Info
- Light Settings
- User Manual
- About Noise Guide

Guide: Quick Setup

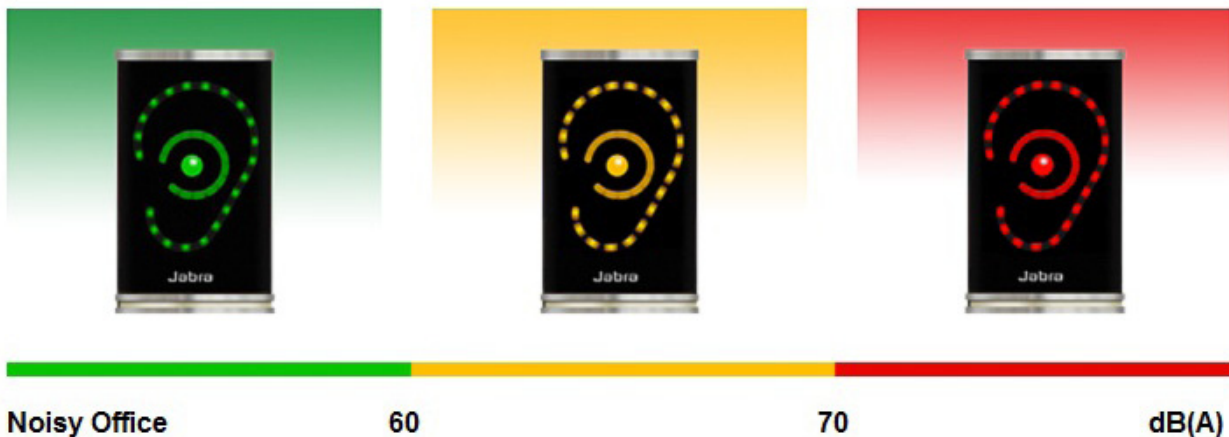
To help decide which of the 3 options to choose, click on the question mark to get further details.

11

NOISY OFFICE:

- The device is lit green when the noise level is below 60 dB.
- The device is lit yellow when the noise level ranges from 60 dB to 70 dB.
- The device is lit red when the noise level exceeds 70 dB.

Noisy Office:

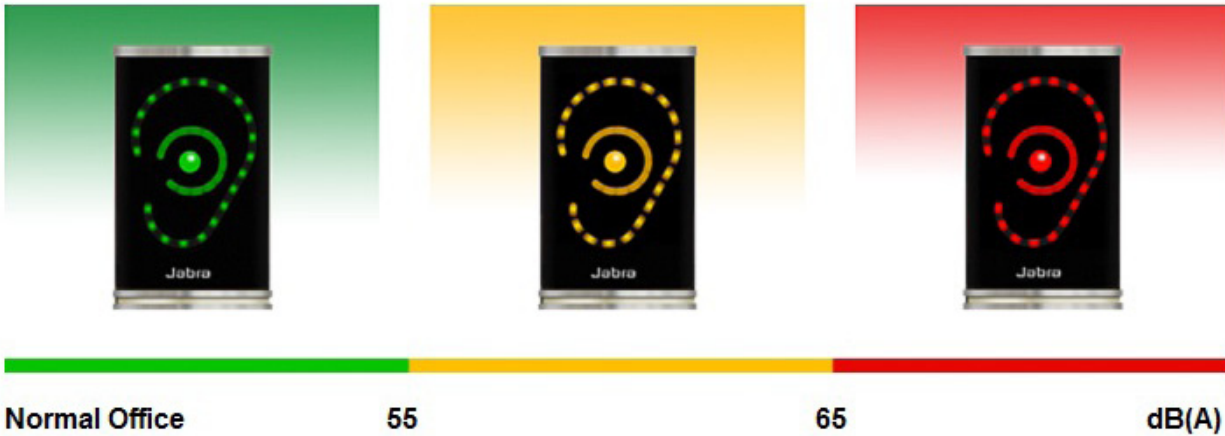


QUICK SETUP

NORMAL OFFICE:

- The device is lit green when the noise level is below 55 dB.
- The device is lit yellow when the noise level ranges from 55 dB to 65 dB.
- The device is lit red when the noise level exceeds 65 dB.

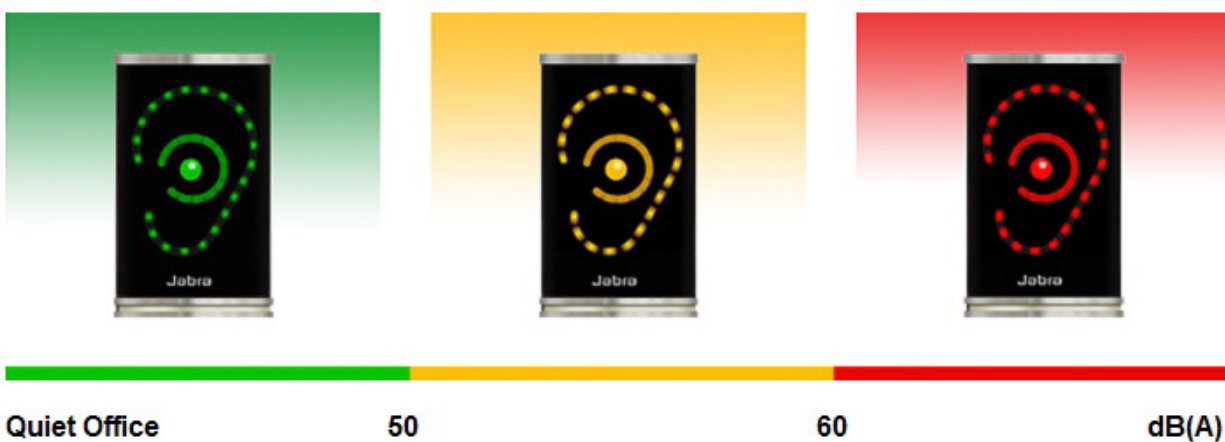
Normal Office:

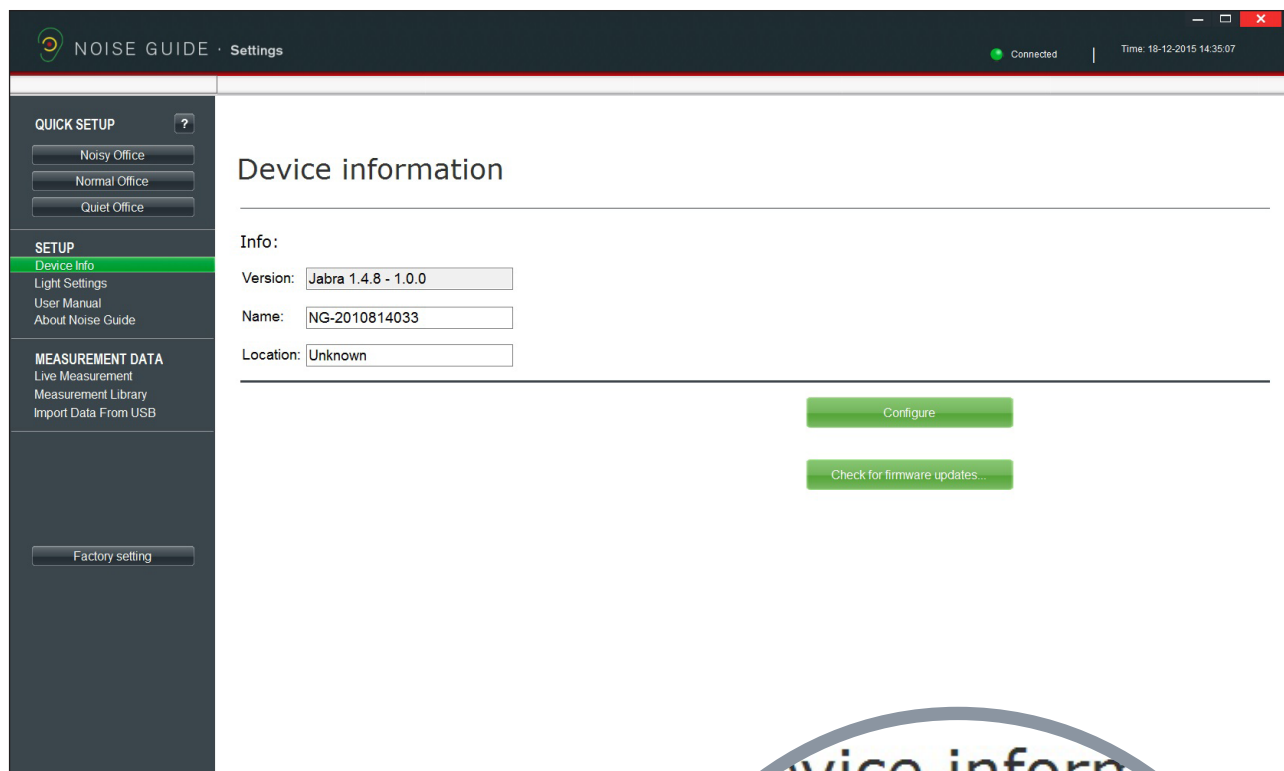


QUIET OFFICE:

- The device is lit green when the noise level is below 50 dB.
- The device is lit yellow when the noise level ranges from 50 dB to 60 dB.
- The device is lit red when the noise level exceeds 60 dB.

Quiet Office:





DEVICE INFORMATION

Version: Shows the firmware version that is installed on the Jabra Noise Guide.

Name: Name your device. Files in the internal log memory will be saved with this name and the date.

Please note that the Jabra Noise Guide must be connected directly to the PC in order to name the device.

Location: Name the location of the device.

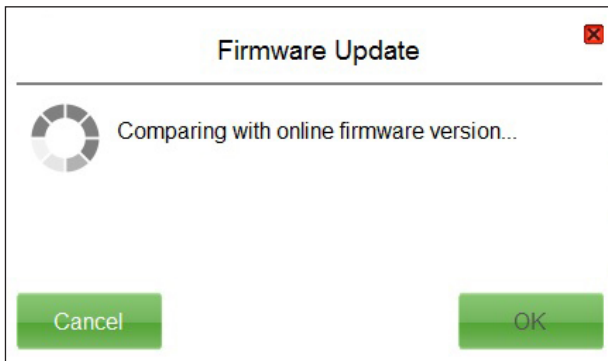


SETUP

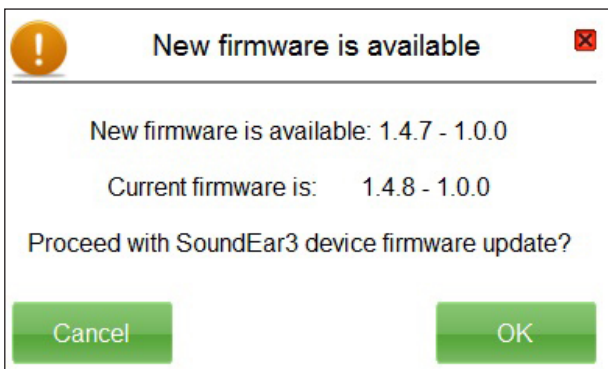
Check for firmware updates...

CHECK FOR FIRMWARE UPDATE

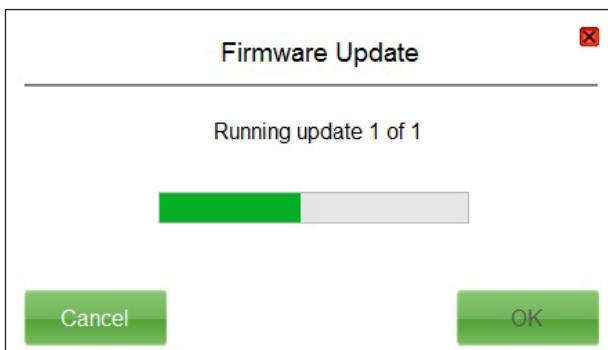
Under "Device Information" you can also check for firmware updates for the Jabra Noise Guide device.



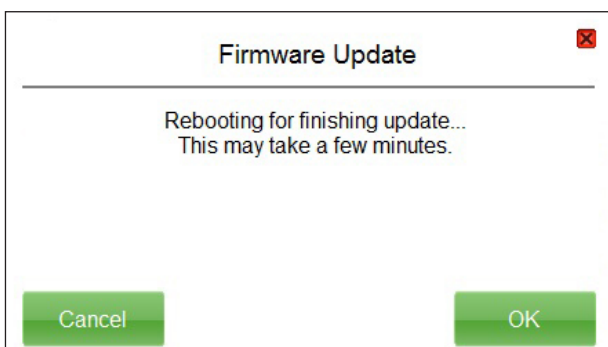
1. Connect Jabra Noise Guide to your PC. Make sure that your PC is connected to the internet.
2. Click on "Check for firmware updates".



3. If there is a new version available, this box will appear. Click on "OK" to update to the latest version of the firmware.



4. The firmware is being updated.

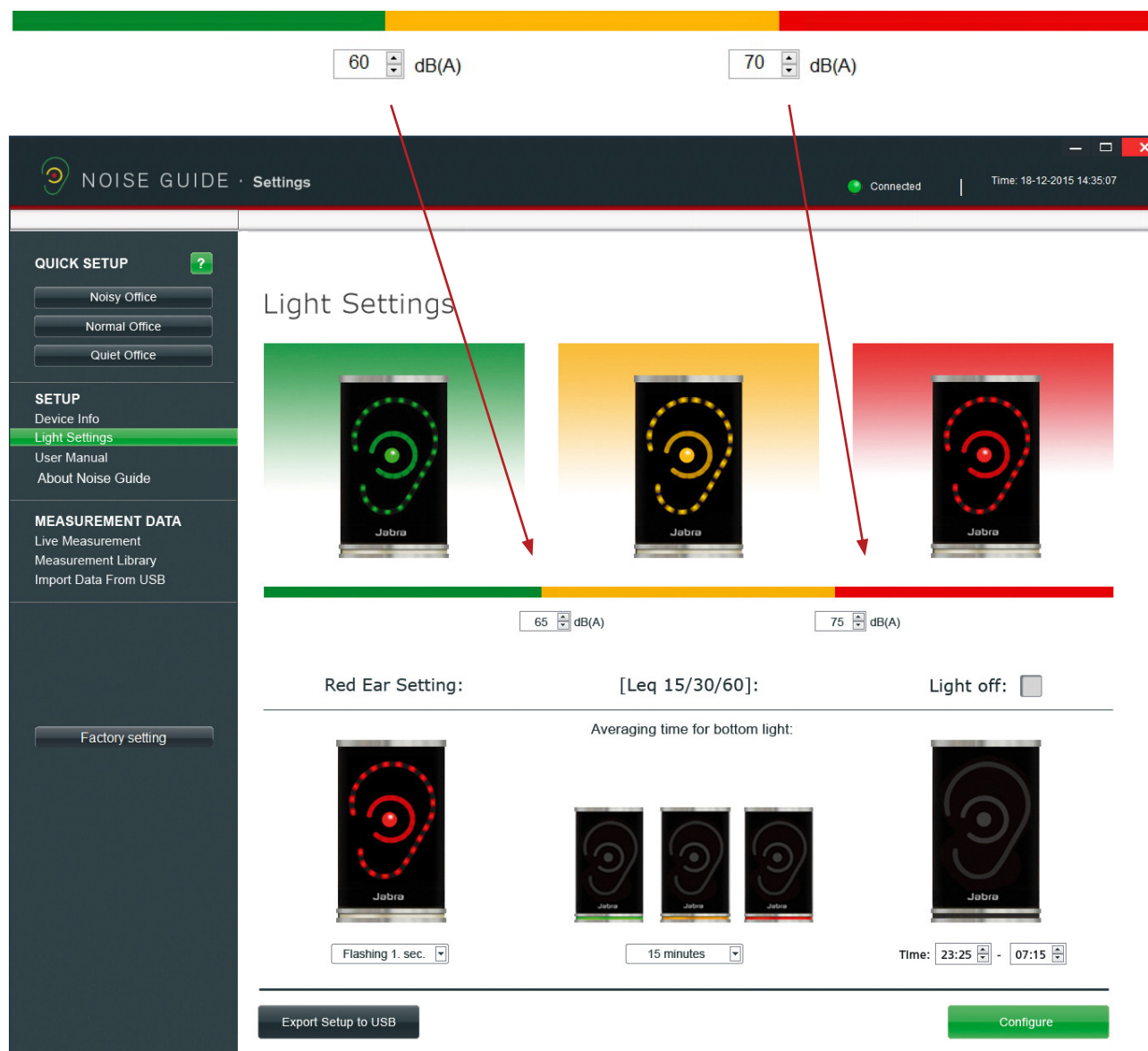


5. Restart the Jabra Noise Guide when the update is complete.

LIGHT SETTINGS

Under “Light Settings” you can adjust the settings for the alarm levels. Here is an example:

1. The Ear-symbol is lit green up to 60 dB.
2. The Ear-symbol is lit yellow from 60 dB to 70 dB.
3. The Ear-symbol is lit red after 70 dB



SETUP

Red Ear Setting:



Lit 1 sec. ▾

[Leq 15/60]:

Averaging time for bottom light:



60 minutes ▾
15 minutes
60 minutes

Light off:

Ear light off Bottom light



From 22:00 ▾ to 08:00 ▾
off:

RED EAR SETTING

By default, the red Ear-symbol will be lit for 1 second when the noise limit is exceeded. Under "Light Settings" you can change the duration and type of alarm:

- Lit 1 sec.
- Lit 2 sec.
- Flashing 1 sec.
- Flashing 2 sec.

LEQ 15/ 60

By default, the light panel at the bottom of the device will indicate the average noise level over the past 15 minutes.

'In "Light Settings" you can set the light panel to show the average noise level for the past 15 or 60 minutes'

LIGHT OFF

In "Light Settings" you have the option of switching off the light alarm for a certain duration of time.

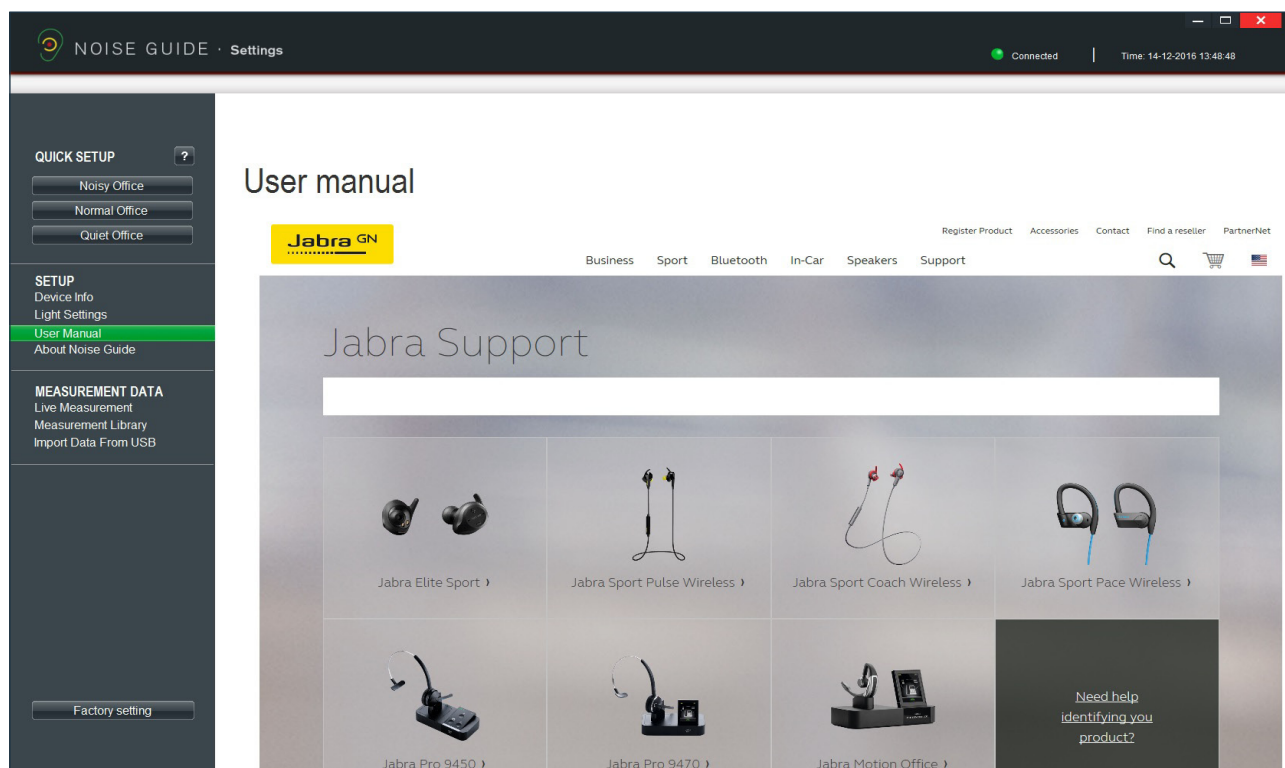
- Check the box "Light off".
- Select a time period for the lights to be switched off.

Please note! The internal memory will continue to log data disregarded that the lights are switched off.

PLEASE NOTE! If your Jabra Noise Guide is connected directly to your PC, remember to save your settings by clicking on "Configure". Click "Export to USB" if you are performing an offline configuration.

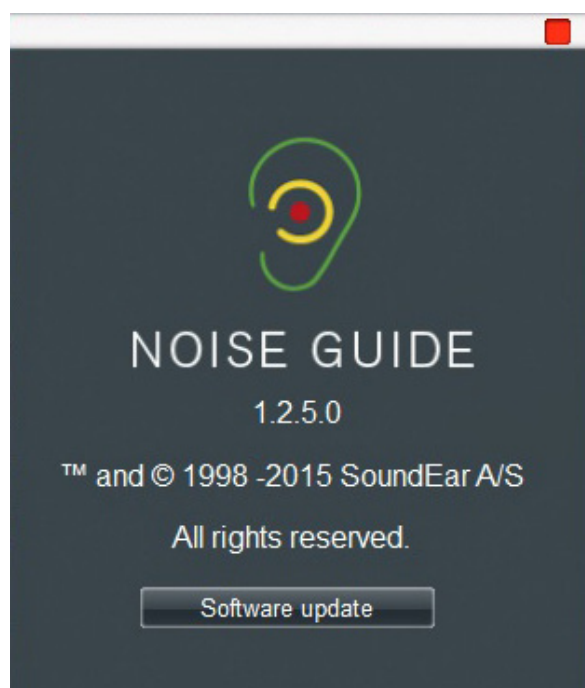
USER MANUAL

Go to “User Manual” to download the latest version of the manual in your preferred language.



ABOUT JABRA NOISE GUIDE

Here you can see what software version is installed on your computer. Click “Software update” to update to the latest software version. The “Software Update” button links to our web site where you can find the latest software version. Always remember to update your Jabra Noise Guide with latest versions of both software (for your PC) and firmware (for the Jabra Noise Guide device).



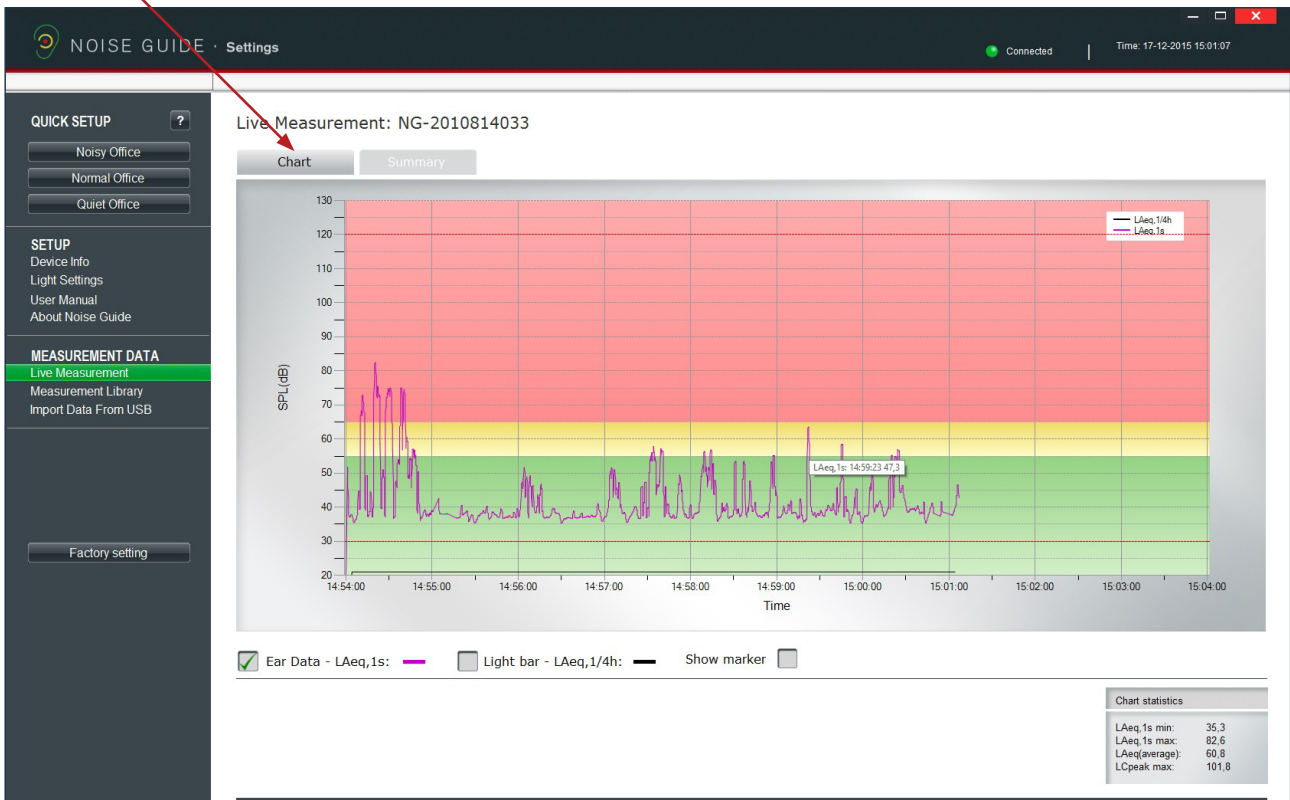
MEASUREMENTS DATA

LIVE MEASUREMENT

You can view live measurements in the software by connecting your Jabra Noise Guide directly to your PC. All data will be saved automatically to the "Noise Guide Data" folder on the C-drive every 24 hours.

CHART

Under "Live Measurement", select the left tab "Chart" to view live measurements in a graph.



The green, yellow and red colour blocks on the graph visualize the light settings for your Jabra Noise Guide. The colour blocks will change according to your light settings.

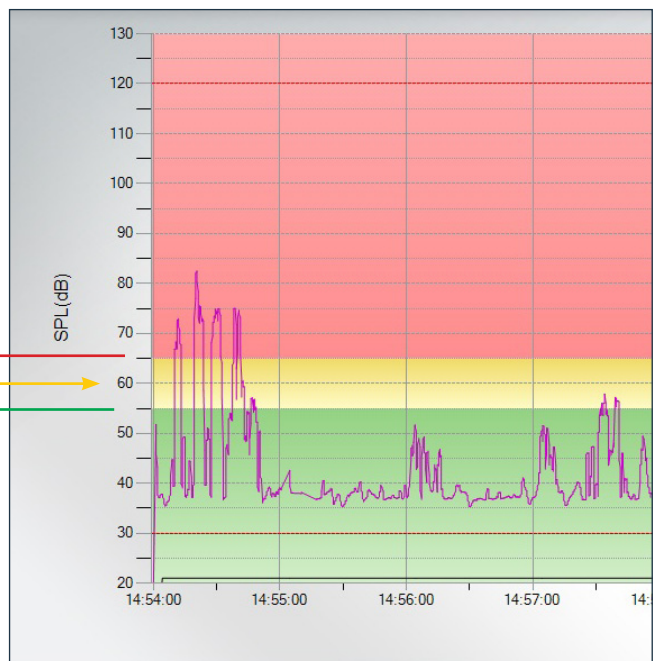
Example:

In this example the settings are:

Red: 65 dB -120 dB

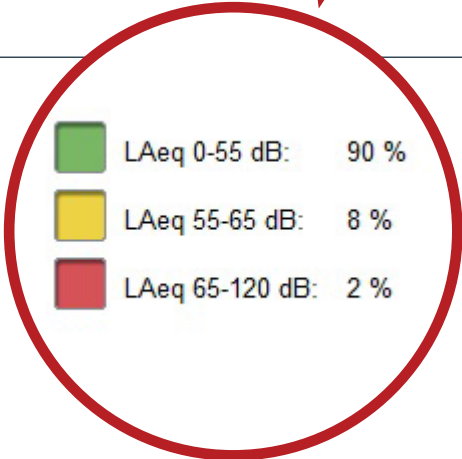
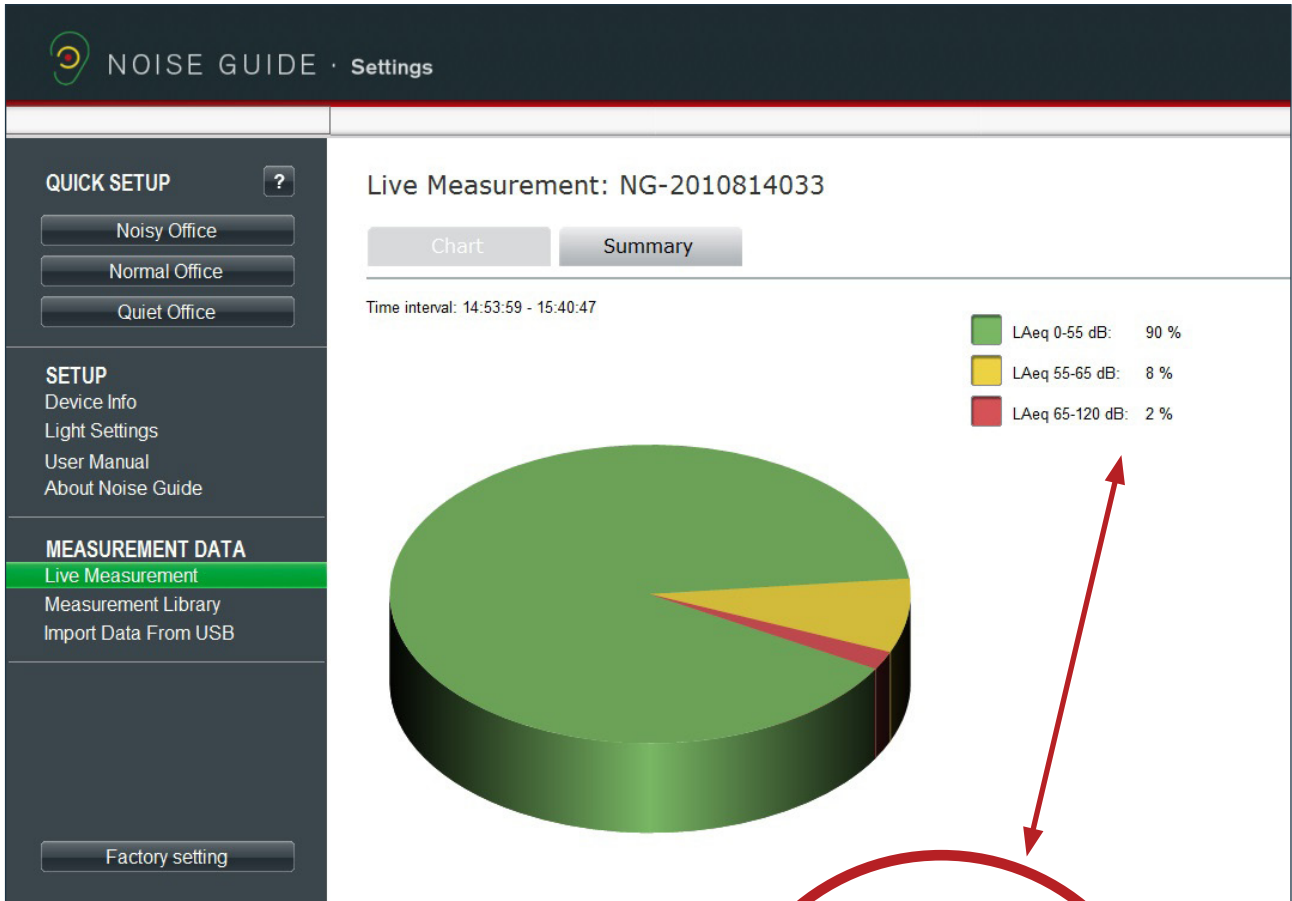
Yellow: 55 dB - 65 dB

Green: 30 dB - 55 dB



SUMMARY

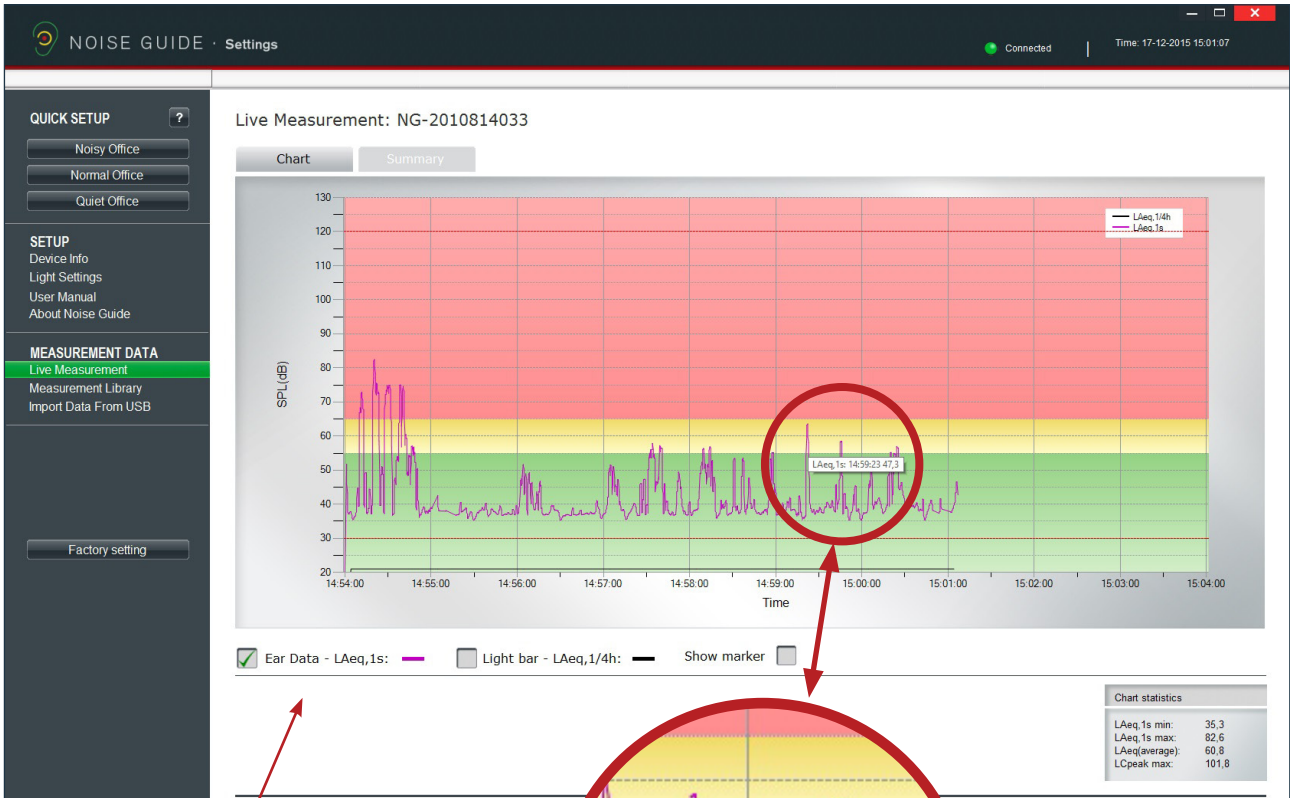
Click the right tab "Summary" to get a statement of your measurements in percentage.



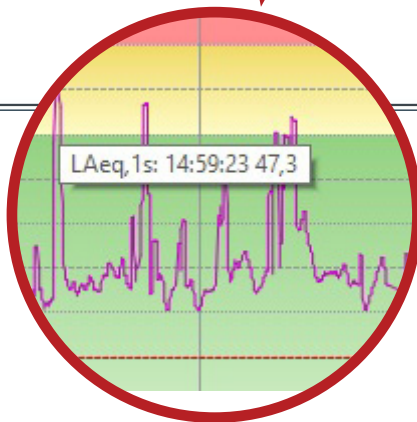
NAVIGATING IN THE SOFTWARE

READING THE GRAPH

Place the cursor over the graph to view time and noise level values.



Select what values you want the graph to show.



In the bottom right corner a box shows the chart statistics for the certain period.

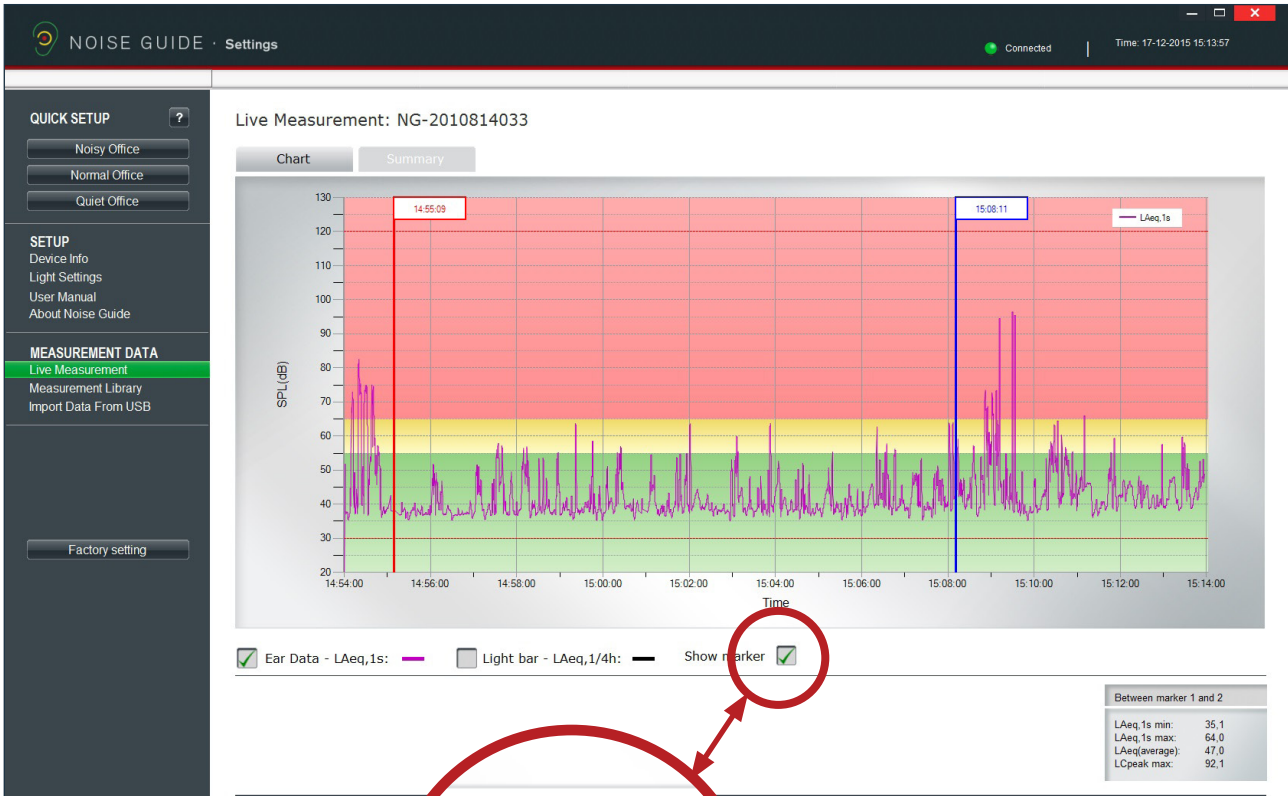
VALUES EXPLAINED:

- LAeq, 1s min: Lowest noise measurement for a certain period.
- LAeq, 1s max: Highest measurement for a certain period.
- LAeq(average): Average noise level for a certain period.
- LCpeak max: Highest peak measurement for a certain period.

Chart statistics	
LAeq,1s min:	35,3
LAeq,1s max:	82,6
LAeq(average):	60,8
LCpeak max:	101,8

SHOW MARKER

The “Show marker” function allows you to examine the measurements in a certain period of time. To select a period on the graph, check the box “Show marker”. A red and a blue marker will now appear.



21



Move the markers by pulling them from side to side. Alternatively, you can move them to a certain point by typing the time in the white box at the top of the marker. Remember to put a colon between hours and minutes.

In the bottom right corner you can view the values between the left and right marker.

Between marker 1 and 2	
LAeq,1s min:	35,1
LAeq,1s max:	96,4
LAeq(average):	70,9
LCpeak max:	129,6

NAVIGATING IN THE SOFTWARE

ZOOM FUNKTION

Whenever data is shown on the graph, it is possible to zoom in to look more closely on a specific area.



1. Current measurement.

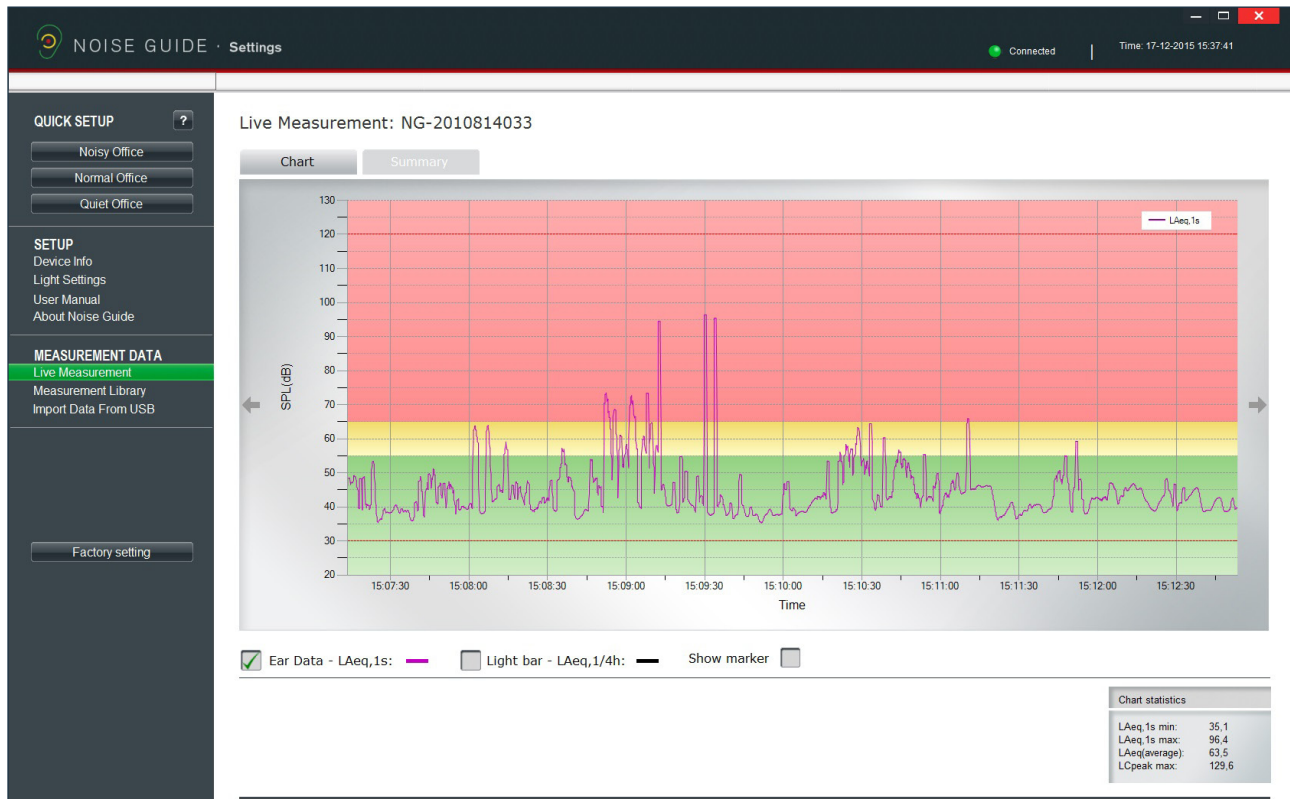


How to zoom in:

2. Position your cursor anywhere on the graph.
3. Left-click and use the cursor to pull a grey area, pulling towards the right.
4. Release the cursor when the wanted area is selected.
5. View the magnified area.

ZOOM FUNKTION

The screen is now showing the magnified area.



How to exit the zoom function:

1. Position your cursor anywhere on the graph.
2. Left-click and use the cursor to pull a box, pulling towards the left until the box is visible again.

NAVIGATING IN THE SOFTWARE

MEASUREMENT LIBRARY

Jabra Noise Guide automatically saves all live measurements to the C-drive in the folder called "Noise Guide data". Data imported from the Jabra Noise Guide via USB are also saved in this folder. All files are saved in a CSV format that is compatible with Excel.

Log files will be named "PC" if they are live measurements, and "Internal" if they are exported from the Jabra Noise Guide's internal memory.

The log file names are created as follows:

1. Name of device
2. Date
3. Origin of the data (live measurement or imported via USB)

Example of a live measurement:

- Strandboulevarden-11-03-2015-PC

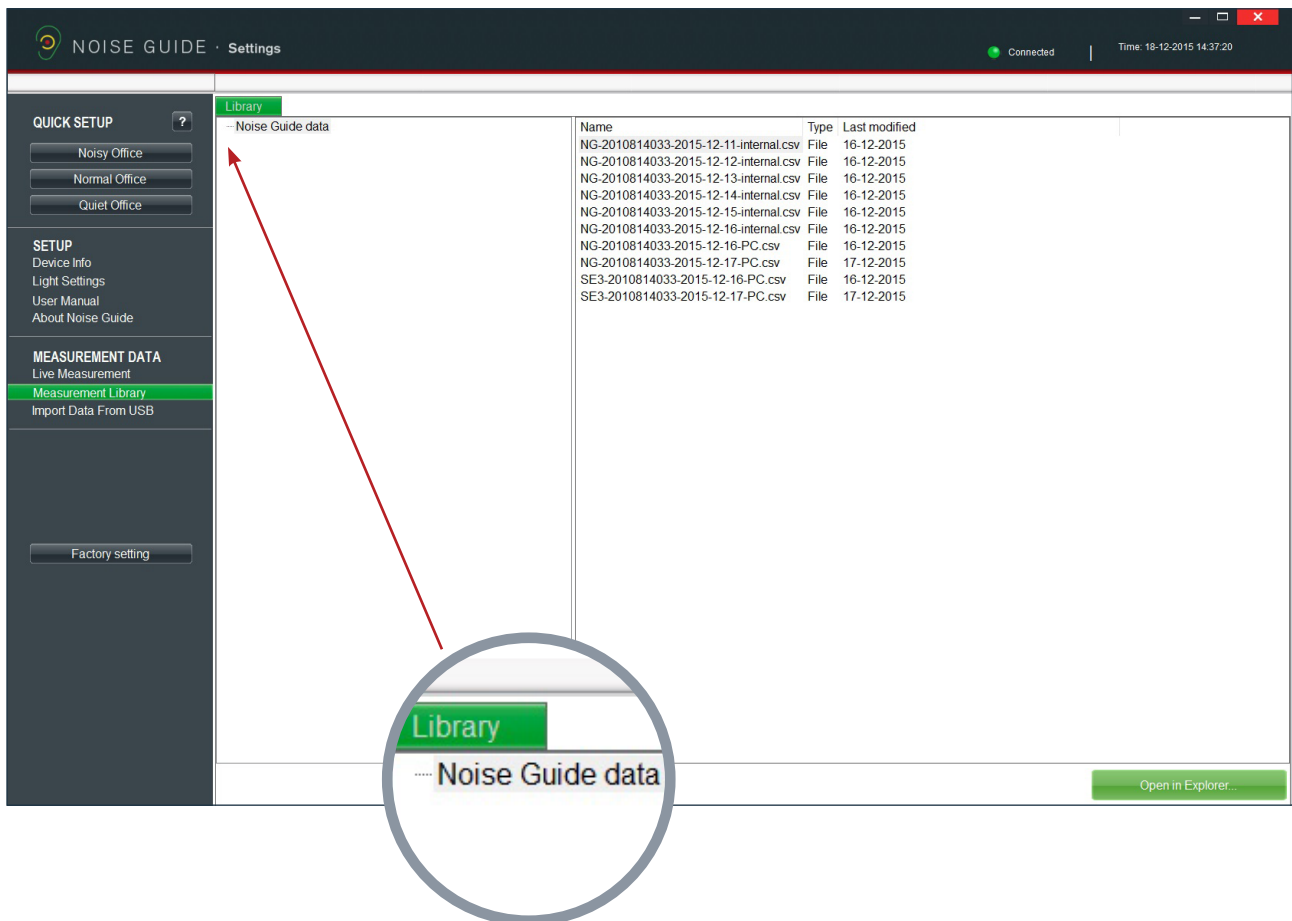
Example of an imported measurement:

- Strandboulevarden-09-03-2015-internal

If you wish to rename or edit your log files, this must be done from the destination folder on the C-drive. Take a short-cut to the destination folder by clicking "Open in Explorer" in the bottom right corner.



Select "Noise Guide data" to update the folder in the software.



WHAT YOU SEE IN THE CSV FILE FOR THE NOISE GUIDE

When you open your Noise Guide measurements as SCV files, you are able to see the full picture of what is being measured.

	A	B	C	D	E	F	G	H	I	J	K	L	M
1	Date	Time	Ms	LAFmax	LAeq1min	LASmax	LCpeak	LAeq15min	LAeq60min	LCpeak above 105dB count	LCpeak above 110dB count	LCpeak above 115dB count	LCpeak above 120dB count
2	05-12-2016	15:56:00	0	87,3	75,8	81,7	108,3	67,7	70	11	0	0	0
3	05-12-2016	15:57:00	0	89,7	77	82,4	115,6	69,5	70,4	17	1	1	0
4	05-12-2016	15:58:00	0	87,1	75,2	80,6	109,2	70	70,6	6	0	0	0
5	05-12-2016	15:59:00	0	83,7	64,3	77	102,6	70	70,6	0	0	0	0
6	05-12-2016	16:00:00	0	87	67,2	80,8	107,3	70,2	70,6	3	0	0	0
7	05-12-2016	16:01:00	0	88,5	78,6	81,9	109,5	71,8	71,1	26	0	0	0
8	05-12-2016	16:02:00	0	90	79	83,2	112,1	73,1	71,5	29	2	0	0
9	05-12-2016	16:03:00	0	86,1	70,4	80,5	108,2	73,3	71,6	5	0	0	0
10	05-12-2016	16:04:00	0	87,4	72	79,9	107,5	73,5	71,6	6	0	0	0
11	05-12-2016	16:05:00	0	71,9	56,7	67,4	88,4	73,5	71,5	0	0	0	0
12	05-12-2016	16:06:00	0	83,3	64,1	75,8	105,7	73,5	71,5	2	0	0	0
13	05-12-2016	16:07:00	0	89,7	75,9	82,1	113,5	73,9	71,7	11	3	0	0
14	05-12-2016	16:08:00	0	85,9	70,1	78,1	109,2	74	71,8	5	0	0	0
15	05-12-2016	16:09:00	0	86,8	65,1	79,5	99,8	73,9	71,8	0	0	0	0
16	05-12-2016	16:10:00	0	110,7	96,9	105,8	128,2	85,5	79,9	13	12	12	12

Date: Shows the date of the measurement

Time: Shows what time the Noise Guide has measured

LAFmax: LAF is an A-weighted **fast** measurement. Fast means that it measures 8 times a second. LAFmax is the highest A-weighted fast measurement within the last minute.

• **A-weighting:** The A-weighting filter covers the full audio range - 20 Hz to 20 kHz and the shape is similar to the response of the human ear at the lower levels.

LAeq1min: LAeq1s is the a-weighted average that has been measures over the last minute.

LASmax: LAS is an A-weighted **slow** measurement.

Slow means that it measures 1 time a second. LASmax is the highest A-weighted slow measurement within the last minute.

LCpeak: Shows the highest C-weighted peak noise within the last minute.

• **C-weighting:** a standard frequency weighting for sound level meters, commonly used for higher level measurements and Peak - Sound Pressure Levels.

LAeq15: LAeq15 is the A-weighted average that has been measures over the last 15 minutes.

LAeq60: LAeq60 is the a-weighted average that has been measures over the last hour.

LCpeak count: The last 4 rows show how many peaks there has been counted over the last minute from 105dB to 120 dB.

	A	B	C	D	E	F	G	H	I	J	K	L
1	Date	Time	LAFmax	LAeq1min	LASmax	LCpeak	LAeq15min	LAeq60min	LCpeak above 105dB count	LCpeak above 110dB count	LCpeak above 115dB count	LCpeak above 120dB count
2	05-12-2016	16:10:00	110,7	96,9	105,8	128,2	85,5	79,9	13	12	12	12
3												

In this example, you see that there has been:

- 13 C-weighted peaks over 105dB
- 12 C-weighted peaks over 110dB
- 12 C-weighted peaks over 115dB
- 12 C-weighted peaks over 120dB

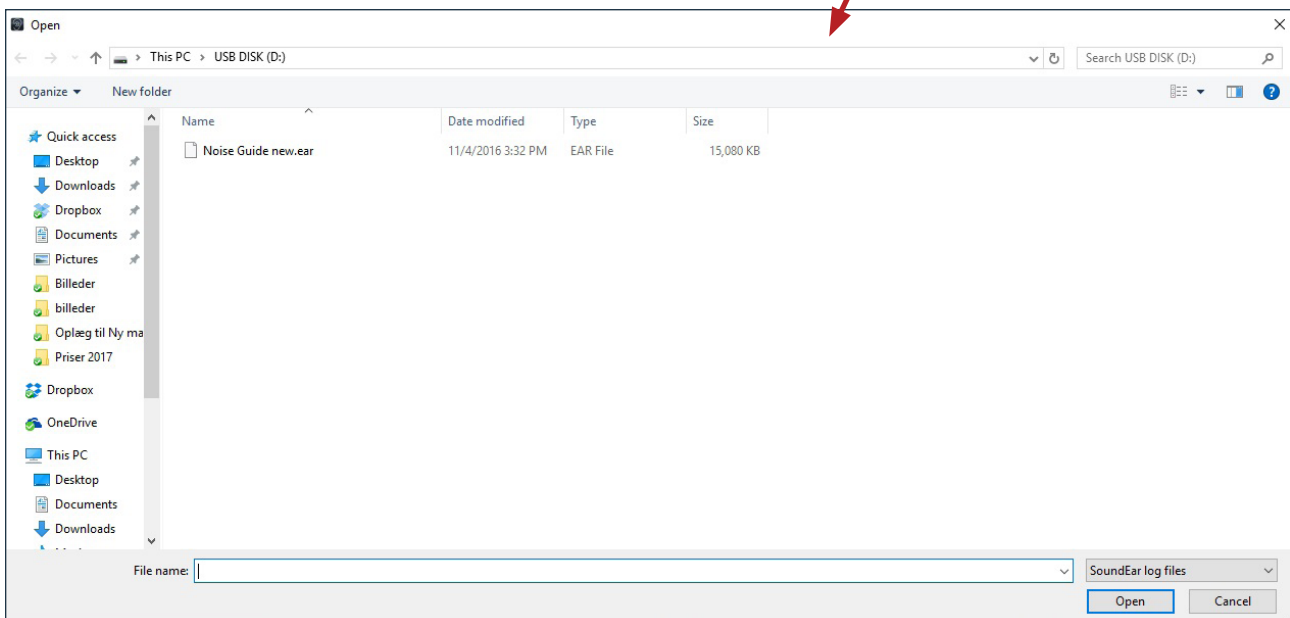
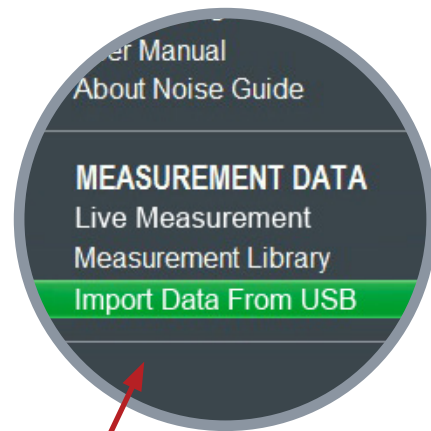
This does not mean that there has been a total of 49 C-weighted peaks measured, but that there have been 12 peaks over 120 dB and 1 peak between 105dB and 110 dB.

SOURCE: <http://www.acoustic-glossary.co.uk/sound-pressure.htm>

NAVIGATING IN THE SOFTWARE

IMPORT DATA FROM USB

1. Connect a USB-key to your Jabra Noise Guide. While the data is exporting from the internal log to the USB-key, the Ear-symbol will light yellow. It may take up to a few minutes, depending on the amount of data.
2. Remove the USB-key from the device when the yellow light has stopped flashing. Insert the USB-key in your PC.
3. Open the software and click "Import from USB". The software will open the folder automatically.
4. Select the file you want to



5. The software now converts the ear-file to a CSV-format and saves the file in the library.

For a video tutorial, go to:

www.jabra.com/supportpages/jabra-noise-guide

FACTORY SETTINGS

If you wish, you can always restore the Jabra Noise Guide's Factory Settings. We recommend that you install the Factory Settings whenever the firmware is being updated. You can also restore the Factory Settings if you want to reset the internal memory in your Jabra Noise Guide.

FAQ: For updated FAQ's, go to www.noiseguide.org

MAINTENANCE

Maintenance and service must be performed only by a trained service technician. After completing maintenance / service, a functionality check and a visual inspection of the device must be performed before it may be used again.

DESINFECTATION / CLEANING

Jabra Noise Guide contains materials that cannot tolerate substances used in conventional surface disinfectants. Therefore, use only alcohol to clean the product.

Desinfection by wiping:

- Firstly, remove dirt and grime from the surface using a moist disposable cloth.
- The surface can then be disinfected by wiping and the use of alcohol.

TECHNICAL SPECIFICATIONS

JABRA NOISE GUIDE SOFTWARE

Operating System	: Windows XP SP3, Windows Vista, Windows 7, Windows 8, Windows 10	We recommend that you do not use a screen size smaller than 1366x768.
Harddisk	: 100 Mbytes free	
RAM	: 512MB RAM	
USB port	: 1 x USB 2.0 port	
CPU	: 1.5GHz AMD/Intel processor	

27

JABRA NOISE GUIDE SPECIFICATIONS

Frequency Range	20 Hz – 20kHz
Measuring Level Range	30 dB – 120 dB
Accuracy	+/- 1.5 dB
Frequency Weighting	dB(A) and dB(C) filters
Time Weighting	Slow (1S)
Dynamic Range RMS	90dB
Light managing	Full configurability through SoundEar software, including night setting
2 x USB ports	Micro USB (Power & PC connection), USB OTG (Log and config)
Display Data	dB(A) Slow, Leq(A)15
Power Supply	5VDC (micro USB) Current consumption: max 2.5W.
Microphone	20 Hz – 20 KHz
Mass Storage (Internal memory)	16MB (128Mbit) Up to 1 year log time
Real Time Clock	Hi-precision type with battery backup (CR2032).
Mechanical Features	Cabinet: Aluminum, Lexan and acrylic
Measurements:	length: 1340 mm, width: 700 mm, height: 700 mm Weight: 0.4 kg



www.jabra.com/support



UK: The crossed-out wheeled bin means that within the European Union the product must be taken to separate collection at the product end of its life. This applies not only to your device but also to any enhancements marked with this symbol. Do not dispose of these products as unsorted municipal waste.