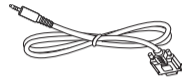


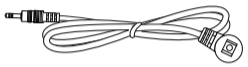
Power Cord



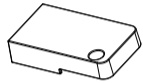
RS232 Daisy Chain Cable



RS232 Cable



IR Sensor Cable



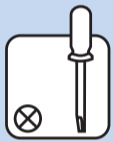
USB Cover



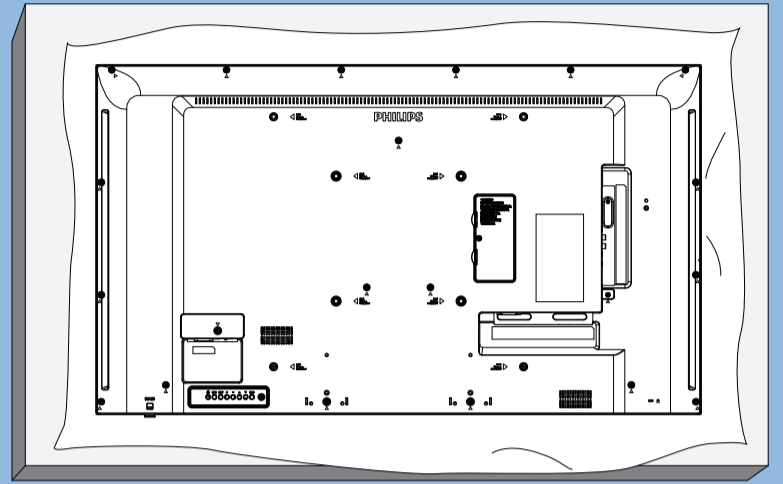
x1

* Differences according to regions.

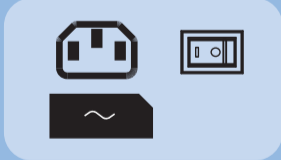
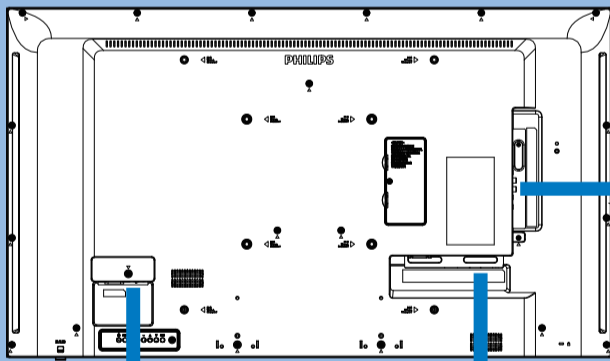
Display design and accessories may differ from those illustrated above.



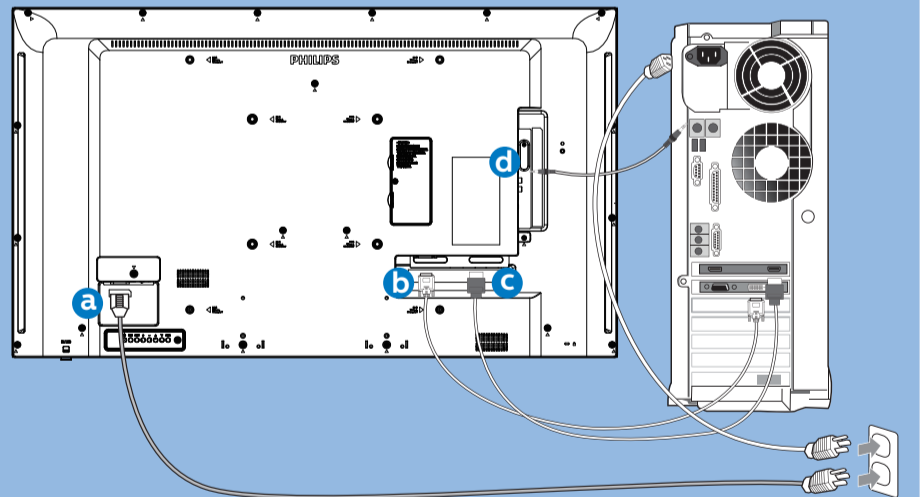
1



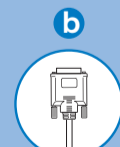
2



3



AC IN



DVI



HDMI



AUDIO IN



DVI-I

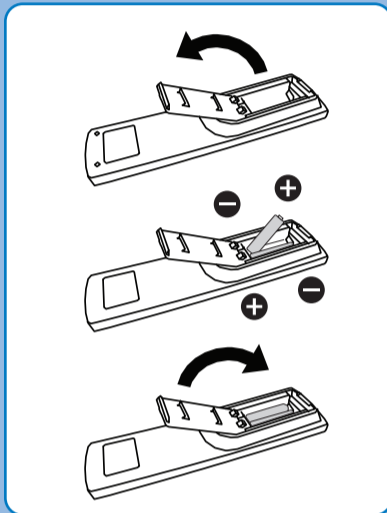
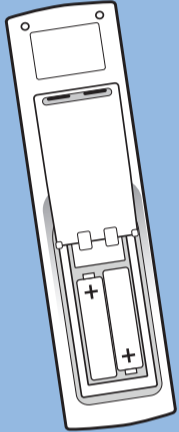
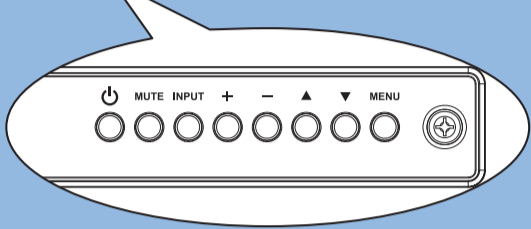
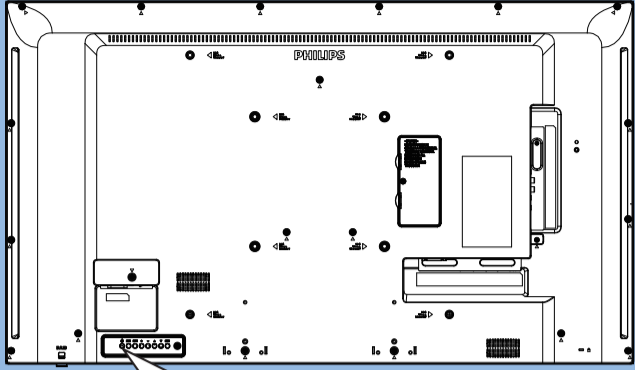


HDMI 2 IN HDMI 1 IN



RS232 IN RS232 OUT IR-IN IR-OUT AUDIO OUT PC LINE IN RJ45 USB 2.0 5V/0.5A

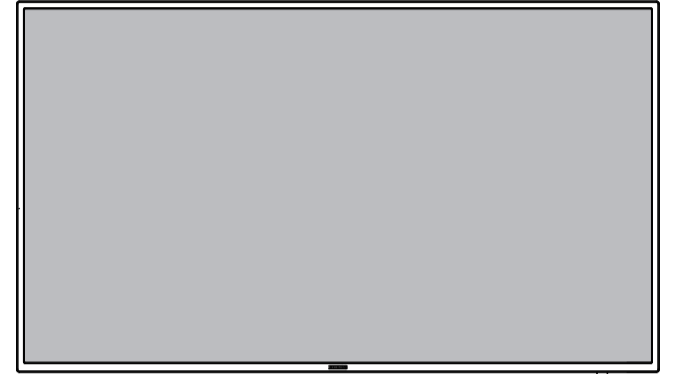
3



PHILIPS

Q line

43BDL3010Q

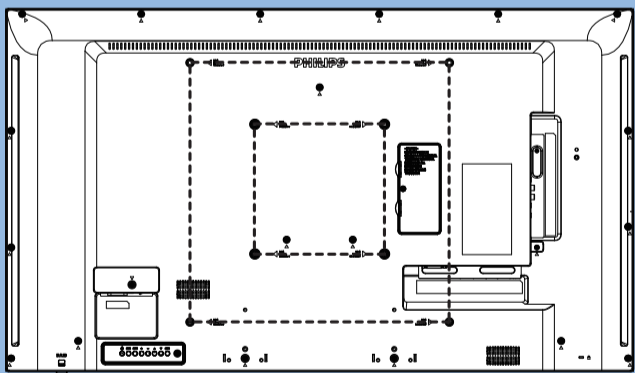


Quick Start



Please check out the website below for more product information.
www.philips.com/signagesolutions-support

4



M6 * (10+X) mm
(X=Thickness of Wall mount BKT)

43BDL3010Q: 400mmx400mm
200mmx200mm



Envision Peripherals Inc.
490 N McCarthy Blvd, Suite #120
Milpitas, CA 95035
USA

© 2019 Koninklijke Philips N.V. All rights reserved.
Philips and the Philips Shield Emblem are registered trademarks of Koninklijke Philips N.V. and are used under license from Koninklijke Philips N.V.

Specifications are subject to change without notice.

Version: V1.00 2019-03-12



Q41G43M181314A