

CyberPower®

Reliability. Quality. Value.

Smart App Sinewave Series PR1000LCDRT2U/PR1000LCDRTXL2U PR1500LCDRT2U/PR2200LCDRT2U User's Manual

K01-000057-05

IMPORTANT SAFETY WARNINGS

This manual contains important instructions that should be followed during installation and maintenance of the UPS and batteries. Please read and follow all instructions carefully during installation and operation of the unit. Read this manual thoroughly before attempting to unpack, install, or operate.

CAUTION! The UPS must be connected to a grounded AC power outlet with fuse or circuit breaker protection. DO NOT plug the UPS into an outlet that is not grounded. If you need to power-drain this equipment, turn off and unplug the unit.

CAUTION! DO NOT USE FOR MEDICAL OR LIFE SUPPORT EQUIPMENT! Under no circumstances this unit should be used for medical applications involving life support equipment and/or patient care.

CAUTION! The battery can power hazardous components inside the unit, even when the AC input power is disconnected.

CAUTION! The UPS should be near the connected equipment and easily accessible.

CAUTION! To prevent the risk of fire or electric shock, install in a temperature and humidity controlled indoor area, free of conductive contaminants. (Please see specifications for acceptable temperature and humidity range).

CAUTION! To reduce the risk of an electric shock, do not remove the cover, except to service the battery. There are no user serviceable parts inside, except for the battery.

CAUTION! To avoid electrical shock, turn off the unit and unplug it from the AC power source before servicing the battery or installing a computer component.

CAUTION! DO NOT USE WITH OR NEAR AQUARIUMS! To reduce the risk of fire, do not use with or near aquariums. Condensation from the aquarium can come in contact with metal electrical contacts and cause the machine to short out.

CAUTION! DO NOT USE WITH LASER PRINTERS! The power demands of laser printers are too large for a UPS.

INSTALLING YOUR UPS SYSTEM

UNPACKING

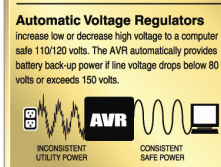
Inspect the UPS upon receipt. The box should contain the following.

(1) UPS Unit; (1) User's Manual for UPS; (2) Rack mount Brackets; (2) Stands; (2) Skids; (1) Telephone Cable (black); (1) Emergency Power Off Cable (gray); (1) PowerPanel® Business Edition Software CD; (2) Serial Interface Cable (DB-9); (1) USB A+B type cable; (1) Warranty Registration Card.

OVERVIEW

The PR1000LCDRT2U/PR1000LCDRTXL2U/PR1500LCDRT2U/PR2200LCDRT2U provides automatic voltage regulation for inconsistent utility power. The PR1000LCDRTXL2U features 2060 Joules, and PR1000LCDRT2U / PR1500LCDRT2U/PR2200LCDRT2U features 1874 Joules of surge protection, and provides battery backup during power outages. The PR1000LCDRT2U/PR1000LCDRTXL2U/PR1500LCDRT2U/PR2200LCDRT2U ensures consistent power to your computer system and its included software will automatically save your open files and shutdown your computer system during a utility power loss.

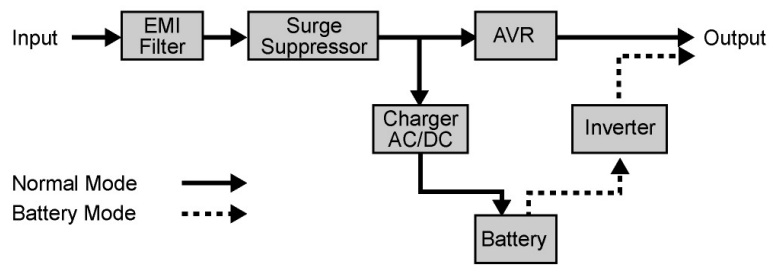
What is AVR?



AUTOMATIC VOLTAGE REGULATOR(AVR)

The PR1000LCDRT2U/PR1000LCDRTXL2U/PR1500LCDRT2U/PR2200LCDRT2U can stabilize the consistent utility power. The utility power may be damaging to important data and hardware, but Automatic Voltage Regulation helps the computer not experience dangerous voltage levels. Automatic Voltage Regulator automatically regulates low or high voltages to keep equipment working at safe AC power levels (110/120V) without switching to battery. Your equipment can operate normally even meet the power problems, such as, short brownouts and blackouts. The unit's powerful sealed lead-acid batteries will provide power only if the incoming voltage drops below 80V or increases above 150V.

SYSTEM BLOCK DIAGRAM



HARDWARE INSTALLATION GUIDE

1. Battery charge loss may occur during shipping and storage. For the first time the UPS is used, it's strongly recommended to charge batteries for at least eight hours is recommended to ensure that the batteries' maximum charge capacity. To recharge the batteries, simply make the UPS plugs into an AC outlet.

2. When you use the included software, connect either the serial or the USB cable between the computer and the corresponding port on the UPS. Note: If the USB port is used, the serial port will be disabled. They cannot be used simultaneously. The computer with the PowerPanel® Business Edition S/W connects to the USB port or the Serial port on the UPS. It can control the operating schedule, battery test, outlet, etc. and get information on the UPS status. However, other computers with PowerPanel® Business Edition S/W can only get UPS status information via a LAN connection.

3. With the UPS off and unplugged, connect your computer, monitor, and any externally powered data storage device (Hard drive, Tape drive, etc.) into the outlets. DO NOT plug a laser printer, copier, space heater, vacuum, paper shredder or other large electrical device into the UPS. The power demands of these devices will overload and possibly damage the unit.

4. To protect a fax, telephone, modem line or network cable, connect the telephone or network cable from the wall jack outlet to the jack marked "IN" of the UPS. Then, connect a telephone cable or network cable from the jack marked "OUT" on the UPS to the modem, computer, telephone, fax machine, or network device.

5. Plug the UPS into a 2 pole, 3 wire grounded receptacle (wall outlet). Make sure the wall branch outlet is protected by a fuse or circuit breaker and does not service equipment with large electrical demands (e.g. air conditioner, refrigerator, copier, etc.). Avoid using extension cords.

6. Press the power switch to turn the UPS on. The Power-On indicator light will illuminate. If an overload is detected, an audible alarm will sound and the UPS will emit one long beep. In order to reset it, turn the unit off and unplug some equipment from outlets. Make sure your equipment carry a load current within the unit's safe range, (refer to the technical specifications), and then turn the unit on.

7. Your UPS is equipped with an auto-charge feature. When the UPS is plugged into an AC outlet, the battery will be automatically charging, even when the unit is switched off!

8. To always maintain an optimal battery charge, leave the UPS plugged into an AC outlet at all times.

9. Before storing the UPS for an extended period of time, turn the unit OFF. Then cover it and store it with the batteries fully charged. Recharge the batteries every three months or so, to ensure good battery capacity and long battery life; further, this might also prevent damage to the unit from an unlikely battery leakage.

10. The unit provides one Primary Serial Port (I), Secondary Serial Port (II), and one USB port, (paired with the Primary Serial Port), to allow connection and communication between the unit and any attached computers. The Primary Serial Port (I) as well as its paired USB port allow for bi-directional communication among the UPS and the primary connected computer running the PowerPanel® Business Edition S/W provided. The UPS can control the computer's shutdown in case of an emergency, and at the same time, the computer can monitor the UPS and alter its various programmable parameters. On the other hand, secondary Serial Port II only allows the UPS to initiate the connected computer's graceful auto-shutdown in case of an emergency.

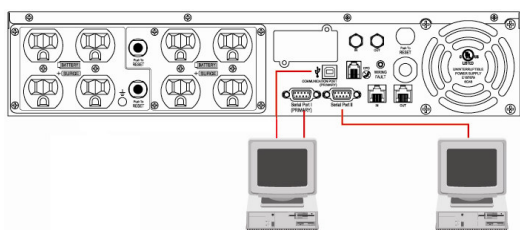
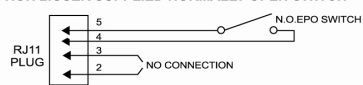
11. EPO (Emergency Power Off) Port:

Use the provided gray cable to connect to a special EPO contact switch. Follow the appropriate circuit diagram below to wire the cable to your EPO configuration. The EPO remote switch is a switch installed in an outside area, connected to the unit via an ordinary RJ-11 phone line. In case of an emergency, it can be used to immediately cut-off power from the UPS.

OPTION 1: USER SUPPLIED NORMALLY CLOSED SWITCH



OPTION 2: USER SUPPLIED NORMALLY OPEN SWITCH



Dry connect is controlled by the PowerPanel® Software, please go to www.cyberpowersystems.com for free download.
***NOTE:** Both USB and Serial cannot be used simultaneously.

The primary computer with PowerPanel® Business Edition software connected to the UPS with either a serial cable or a USB cable.

The equipment can read information via dry contact.

BASIC OPERATION

FRONT / REAR PANEL DESCRIPTION

1. Power Switch

Master on/off switch for equipment connected to the UPS.

2. Power On Indicator

Indicates that the AC utility input power's condition is normal and that the UPS outlets are providing power, free of surges and spikes.

3. LCD Module Display

LCD shows all the UPS information with icons and messages.

4. LCD Display Toggle Button

Used to select among a variety of information the LCD can display.

5. Battery Backup Protected Outlets

The unit provides a total of eight outlets with battery backup and surge protection. They ensure that connected equipment will keep an uninterrupted operation over a period of time, during a power failure.

Critical /Non-critical

It is possible to program the unit in a way so that the outlet block marked as "non-Critical", (4 ports), will stop the provision of power to connected equipment after a certain period of time, thus making more runtime available for the equipment connected on the outlets marked as "Critical", (2 ports). In other words, the user can establish runtime priority for certain connected equipment, maximizing its "availability" during a prolonged power outage. This type of control takes place with the use of the provided PowerPanel® Business Edition S/W.

6. Input Power Cord

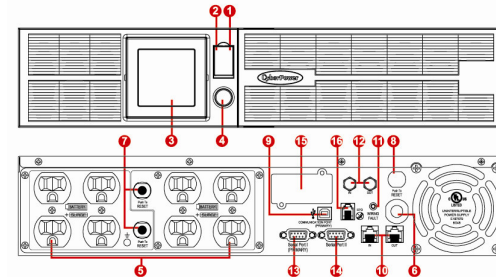
Connect the AC Power cord to a properly wired and grounded outlet.

7. Output Circuit Breaker

This circuit breaker serves to provide output overload and fault protection.

8. Input Circuit Breaker

This circuit breaker serves to provide input overload and fault protection.



9. USB port.

This is a connectivity port allowing communication and control among the UPS and the connected computer. You should install on your computer the PowerPanel® Business Edition S/W appropriate to the operating system you are using.

10. Protected Communication Ports RJ11/RJ45

Ports protect standard single line modem, fax, telephone line or network cable.

11. Site Wire Fault Indicator

This LED will illuminate to warn the user that a wiring problem exists within the AC receptacle, such as a bad ground or reversed wiring. If illuminated, disconnect all equipment and contact an electrician to ensure outlet is properly wired.

12. Coax/Cable/DSS Surge Protection

The Coax/Cable/DSS surge protection ports will protect any cable Modem, CATV converter or DSS receiver.

13. Serial Port I

Serial port allows connection and communication between the UPS and the computer.

14. Serial Port II

Serial Port II relays information to equipment that can utilize a contact closure UPS.

15. SNMP/HTTP Network slot

Remove the cover panel to install optional SNMP that allows remote monitoring and control of your UPS on a network.

16. EPO (Emergency Power Off) Port:

Allow for an emergency UPS Power-Off from a remote location.

BATTERY REPLACEMENT

Contact your dealer or call the number in this manual for information on battery replacement. The part numbers of internal battery are RBP832 for PR1000LCDRT2U/PR1000LCDRTXL2U/PR1500LCDRT2U, RBP842 for PR2200LCDRT2U. For external battery pack of PR1000LCDRTXL2U, the part number is BP48V45ART2U.

Read and follow the IMPORTANT SAFETY INSTRUCTIONS before servicing the battery. Service the battery under the supervision of personnel knowledgeable of batteries and their precautions. **Service the battery can only be performed by trained personnel.**

Replacement of batteries located in an OPERATOR ACCESS AREA.

CAUTION! When replacing batteries, replace with the same number of the following battery: BP7-12(BB) for PR1000LCDRT2U/PR1500LCDRT2U/PR1000LCDRTXL2U, HR9-12(BB) for PR2200LCDRT2U/PR1500LCDRT2U. Before replacing batteries, remove conductive jewelry such as chains, wrist watches, and rings. High energy through conductive materials could cause severe burns.

CAUTION! Risk of battery explosion, if battery is replaced by an incorrect type. Dispose of used battery according to the instructions.

CAUTION! To reduce the risk of fire, connect only to a circuit provided with 20 amperes maximum branch circuit overcurrent protection in accordance with the National Electric Code, ANSI/NFPA 70.

CAUTION! For model PR1000LCDRTXL2U can be provided with a maximum of four extension battery packs.

CAUTION! Use only the specified type of battery. See your dealer for replacement batteries.

CAUTION! The battery may present the risk of electrical shock. Do not dispose of batteries in a fire, as they may explode. Follow all local ordinances regarding proper disposal of batteries.

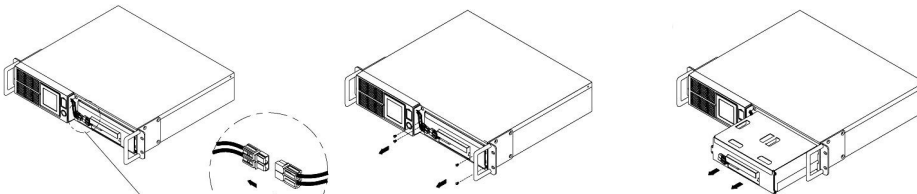
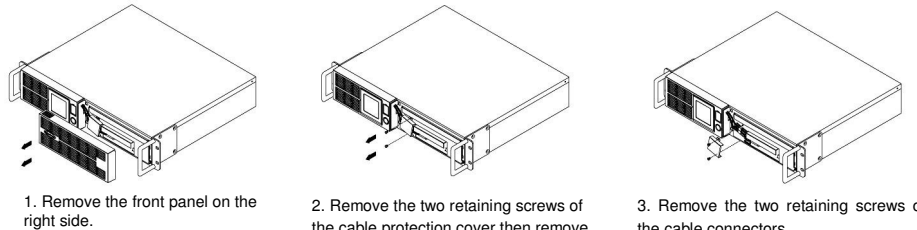
CAUTION! Do not open or mutilate the batteries. Release electrolyte is harmful to the skin and eyes and may be toxic.

CAUTION! A battery can present a high risk of short circuit current and electrical shock.

Take the following precautions before replacing the battery:

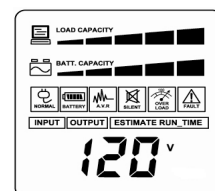
1. Remove all watches, rings or other metal objects.
2. Only use tools with insulated handles.
3. Do not lay tools or metal parts on top of battery or any terminals.
4. Wear rubber gloves and boots.

5. Determine if the battery is inadvertently grounded. If inadvertently grounded, remove source of ground. **CONTACT WITH A GROUNDED BATTERY CAN RESULT IN ELECTRICAL SHOCK!** The likelihood of such shock will be reduced if such grounds are removed during installation and maintenance (applicable to a UPS and a remote battery supply not having a grounded circuit)



4. Disconnect the black and red cable.
5. Remove the three retaining screws.
6. Pull out the old battery pack and replace. Reassemble the retaining screws, covers, black and red cable, and front panel in the reverse sequence of the above steps. Recharge the unit for 4-8 hours to ensure maximum UPS battery runtime.

LCD STATUS DEFINITION



The LCD displays detailed information on the UPS status and current power conditions to alert you to potential power problems before they affect your equipment. Note! All related UPS information is based on that you should turn on the UPS.

INPUT voltage meter: This meter measures the AC voltage from the wall outlet. The INPUT voltage readout is used to identify the input voltage information. This can be used as a diagnostic tool to identify poor-quality input power. Units are listed in V (Volts). When the UPS connect to any equipment, the AVR can provide a stable 110/120V power output. In the event of a complete loss of power, severe brownout, or over voltage, the UPS relies on its internal battery to back up to supply a consistent 110/120V output.

OUTPUT voltage meter: The Output Voltage screen measures, in real time, the AC voltage that the UPS is providing to your connected equipment via the UPS outlets. Units are listed in V (Volts).

ESTIMATE RUN TIME: The Estimated Runtime Screen displays how many minutes of runtime can be expected of the UPS if it were to experience a power outage. When runtime becomes shorted, the battery capacity will decrease; (battery capacity bar indicator will be falling.) Note: The number displayed may be less than actual runtimes for low loads.

NORMAL icon: This icon illuminates when the UPS is working under normal conditions.

BATTERY icon: When there is a severe brownout or blackout, this icon will appear followed by an alarm, (two short beeps), indicating that the UPS is now working using its internal batteries. Once the batteries are run out of power, (over a period of time), a constant alarm will sound. If this happens and main power has not been restored, it is recommended that you save your files and turn off your equipment manually as soon as possible.

Automatic Voltage Regulation (AVR) icon: This icon will appear when the unit is automatically regulating low or high AC input line voltage conditions, without resulting to the use of battery power.

SILENT MODE icon: This icon appearing indicates that the buzzer will not be beeping while in battery operating mode. During Silent mode, the unit's alarm does not sound until the Battery Capacity falls to < 20%.

OVER LOAD icon: This icon will appear followed by an alarm, indicating that an overload condition has been reached. To recover from the overload condition, start unplugging your equipment from the UPS outlets until the icon disappears and the alarm stops.

FAULT icon: When activated indicates a system fault error. Please refer to the troubleshooting table for possible causes and solutions.

BATT. CAPACITY meter: BATT. CAPACITY is shown as a bar chart; each segment indicates approximately a 20% of battery capacity.

LOAD CAPACITY: Load CAPACITY is shown as a bar chart; each segment indicates approximately a 20% of load capacity.

LCD STATUS AND SETUP FUNCTIONS

1. General Mode:

- Press the "Display-Toggle" button to check the status of the UPS.
- Press and hold the "Display-Toggle" button for 4 seconds, If the machine is in the Battery Mode with active alarm, it will become silent. If the machine is in the Line Mode, a self-diagnostic test will take place.
- If the "Display-Toggle" button remains untouched for over 30 seconds, the LCD backlight will turn off automatically.

	Item	Unit
1	Input Voltage	V
2	Output Voltage	V
3	Output Frequency	Hz
4	Load	Kw
5	Estimate Run Time	Min
6	Load Capacity	%
7	Battery Capacity	%
8	Centigrade	°C
9	Fahrenheit	°F

2. Set-up Mode

- Step 1:** Hold the "Display-Toggle" button for 10 seconds to enter the UPS Set-Up Mode.
- Step 2:** By pressing the Display toggle, users can switch between setup functions. Some User Configurable functions are as follows:

- Delay Time:** The time delay between switching from Battery Mode to Line Mode. There are 9 different settings. The default setting is 0 minutes.
- Battery Pack Numbers:** This function provides the estimated UPS runtime using various numbers of battery packs. The default setting is 0.
- Static Frequency Tolerance:** There are 6 settings (1,2,4,6,8,10%), and the default setting is +/-6%. Functional description: The setting may be adjusted to the quality of the electricity in use.
- Slew rate:** Also known as Dynamic Frequency Tolerance. There are 5 different settings (0.25,0.5,1,2,4 Hz/Sec). The fault value is 4Hz/sec. **Functional Description:** "Slew Rate" indicates the tolerance of a device in accepting frequency variance. Lower "Slew Rate" results in less tolerance but better protection for the connected load and vice versa.
- Low Battery Shutdown Voltage:** This function will adjust the UPS shutdown point according to the battery's remaining capacity.

The settable items are sorted by unit as in the following table :

- Step 3:** Press and hold the display-toggle for 4 seconds. When the icons blink, the value of each item is changed by slightly pressing the toggle.

- Step 4:** To save the value and return to general mode, press and hold the toggle for 4 seconds.

Note! If the UPS is left idle for over 30 seconds during setup, it will turn off the backlight and return to general mode automatically.

Note! If the user does not want to save the new settings and return to the general mode, there are two methods:

- Wait for the backlight to turn off, or,
- By pressing and holding the "Display-toggle" key for 10 second.

Items	Unit
Delay Time	Min
Battery Pack Numbers	A
Static Frequency Tolerance	%
Slew Rate	Hz
Battery Shutdown Voltage	V

TROUBLE SHOOTING

Problem	Possible Cause	Solution
Outlet do not provide power to equipment	Circuit breaker has tripped due to an overload.	Turn the UPS off and unplug at least one piece of equipment. Wait 10 seconds, reset the circuit breaker by depressing the button, and then turn the UPS on.
	Batteries are discharged	Recharge the unit for at least 4 hours
	Unit has been damaged by a surge or spike.	Contact CyberPower Systems about replacement batteries at tech@cpsww.com .
The UPS does not perform expected runtime.	Uncritical outlets have turned off automatically due to an overload	Push the toggle button to make the uncritical outlets turn on.
	Battery not fully charged.	Recharge the battery by leaving the UPS plugged in.
The UPS will not turn on.	Battery is degraded	Contact CyberPower Systems about replacement batteries at tech@cpsww.com .
	The on/off switch is designed to prevent damage by rapidly turning it off and on.	Turn the UPS off. Wait 10 seconds and then turn the UPS on.
	The unit is not connected to an AC outlet.	The unit must be connected to a 110/120v outlet.
	The battery is worn out.	Contact CyberPower Systems about replacement batteries at tech@cpsww.com .
PowerPanel® Personal Edition is inactive	Mechanical problem.	Contact CyberPower Systems at tech@cpsww.com .
	The serial cable or USB cable is not connected.	Connect the cable to the UPS unit. You must use the cable that came with the unit.
	The cable is connected to the wrong port.	Try another port of your computer
	The unit is not providing battery power.	Shutdown your computer and turn the UPS off. Wait 10 seconds and turn the UPS back on. This should reset the unit.
	The serial cable is not the cable that was provided with the unit.	You must use the cable included with the unit for the software

Additional troubleshooting information can be found at www.cyberpowersystems.com/support.htm

TECHNICAL SPECIFICATIONS

Model	PR1000LCDRT2U	PR1500LCDRT2U	PR2200LCDRT2U	PR1000LCDRTL2U
Capacity(VA)	1000	1500	2170	1000
Capacity(Watts)	700	1000	1600	700
Input				
Input Voltage Range	80Vac-150Vac			
Input Frequency Range	50/60Hz +/-3Hz(auto sensing)			
Output				
On Battery Output Voltage	Pure Sine Wave at 120Vac +/-5%			
On Battery Output Frequency	50/60 Hz +/-0.1Hz			
Transfer Time(Typical)	4 ms			
Overload Protection	On Utility: Circuit Breaker, On Battery: Internal Current Limiting			
Surge Protection and Filtering				
Lightning/Surge Protection	Yes			
Internet Ready(DSL/Phone/FAX/Modem Protection)	RJ11/RJ45(One In/One Out)			
Physical				
Output Receptacles	8		6	
Dimensions(in)	2U Rack, 17.1" x 15.3"x 3.5"			
Weight (lb)	58	60	66	66
Battery				
Sealed Maintenance Free Lead Acid Battery	12V / 7.0AHx4		12V / 9.0AHx4	12V / 7.0AHx4 Extended runtime
Hot Swappable External Battery	Yes			
Warning Diagnostics				
Indicators	Power On, Wiring Fault, LCD Display (Using Battery, AVR, Load Level, Battery Level)			
Audible Alarms	On Battery, Low Battery, Overload			
Environmental				
Operating Temperature	32°F to 104°F (0°C to 40°C)			
Operating Relative Humidity	0 to 95% Non-Condensing			
Communication				
PowerPanel® Business Edition	Windows 98/ME/NT/2000/XP, Vista			
Management				
Self-Test	Manual Self-Test			
Auto-Charger/ Auto-Restart	Yes			
COM Interface	True RS232 x1+ Dry connector x1			
Built-in USB Interface	Yes			
SNMP/ HTTP Network Slot	Yes			
Safety Approvals	UL1778,cUL107,FCC/Doc Class B			

CYBERPOWER GREENPOWER UPS™ TECHNOLOGY

GreenPower UPS™

The CyberPower GreenPower UPS™ cuts UPS energy costs by up to 75% compared to the conventional UPS circuits. Conventional UPS systems pass power through a transformer to provide normal output voltage to protected devices. By contrast, the GreenPower UPS™ circuitry bypasses the transformer when utility power is normal, significantly increasing the power efficiency of the UPS. As a result, a GreenPower UPS™ produces less heat and uses less energy reducing energy costs.

When utility power is abnormal, the GreenPower UPS™ operates like a normal UPS. Since utility power operates normally 88% of the time, the GreenPower UPS™ operates primarily in its cost-cutting bypass mode.



1 YEAR LIMITED WARRANTY

By purchasing a recertified CyberPower UPS in the United States or Canada, the original end-user consumer purchaser (referred to as the "Initial Customer") receives a 1 Year limited warranty.

1 Year Limited Warranty. The Initial Customer receives a 1 Year limited warranty explained below (referred to as the "1 Year Limited Warranty") for the UPS (referred to as the "UPS").

If you are the Initial Customer, you are asked to read the following terms and conditions carefully before using the UPS. By using the UPS you consent to be bound by and become a party to the terms and conditions of the 1 Year Limited Warranty provided in this document. If you do not agree to the terms and conditions of the 1 Year Limited Warranty, you should return the UPS for a full refund prior to using it.

CyberPower warrants to you, the Initial Customer, that the UPS will be free from defects in material and workmanship for 1 Year from the date of original purchase, subject to the terms of this 1 Year Limited Warranty. This 1 Year Limited Warranty gives you specific rights and you may have other rights, which vary from State to State or Province to Province.

Making a 1 Year Limited Warranty Claim.

To make a 1 Year Limited Warranty claim, you must do the following:

- Provide proof of purchase (for example, a sales receipt) that establishes you as the Initial Customer (the original end-user consumer purchaser) of the UPS and prove that the UPS was purchased within 1 Year of the failure of the UPS.
- Call CyberPower at (877) 297-6937 (toll free), write to CyberPower at 4241 12th Ave E, Suite 400, Shakopee, MN 55379, or send us an e-mail to tech@cyberpowersystems.com within TEN (10) days of the failure of the UPS.
- When you contact CyberPower, identify the UPS by model number, serial number, provide the purchase date, and request Return Materials Authorization (RMA) information from CyberPower.
- Pack and ship the UPS to CyberPower as instructed in your RMA. Show the RMA code on the shipping label or include it with the UPS. You MUST prepay all shipping costs and you are responsible for packaging and shipment.

What CyberPower Will Do After You Make a Claim.

CyberPower will inspect and examine the UPS. If the UPS is defective in material or workmanship, and you have complied with the terms of this 1 Year Limited Warranty, CyberPower will:

- Repair or replace the UPS with a new or recertified UPS and return it to you at CyberPower's expense, or,
- Refund to you the full purchase price you paid for the UPS (purchase receipt showing price paid is required) if CyberPower is unable to or decides not to repair or replace the UPS (if defective) within a reasonable time with a new or recertified UPS.

Exclusion of Consequential and Other Damages

Your exclusive remedies and CyberPower's sole obligations are those provided by this 1 Year Limited Warranty. This exclusion of other express warranties applies to written and oral express warranties.

Any Implied Warranty of Merchantability or of Fitness for a Particular Purpose, if applicable to the UPS, is limited in duration to 1 Year from the date of original purchase by the Initial Customer. This provision shall NOT create any Implied Warranty or Merchantability or of Fitness for a Particular Purpose that would not otherwise apply to the UPS. NOTE: Some States and Provinces do not allow limitations on how long an implied warranty lasts, so the above limitation may not apply to you.

This 1 Year Limited Warranty does not cover or apply to: misuse, modification, operation or storage outside environmental limits of the UPS, a UPS in transit, in shipment, or in storage, improper operation or maintenance, or use with items not designed or intended for use with the UPS (such as laser printers, copiers, shredders, appliances, devices with motors or heating elements, etc.). You must contact CyberPower within ten (10) days of the failure of the UPS in order to make a warranty claim.

CyberPower excludes any liability for personal injury under the 1 Year Day Limited Warranty. CyberPower excludes any liability for direct, indirect, special, incidental, or consequential damages, whether for damage to or loss of property, damage to equipment connected to the UPS, loss of profits, business interruption, or loss of information or data. This exclusion applies even though damage or loss is caused by negligence or other fault. NOTE: Some States or Provinces do not allow the exclusion or limitation of incidental or consequential damages, so the above limitation may not apply to you.

DO NOT USE FOR MEDICAL OR LIFE SUPPORT EQUIPMENT OR OTHER HIGH RISK ACTIVITIES.

CyberPower does not sell the UPS for use in high-risk activities. The UPS is not designed or intended for use in hazardous environments requiring fail-safe performance, including the operation of nuclear facilities, aircraft navigation or communication systems, air traffic control, weapons systems, life support or medical applications, or for use in any circumstance in which the failure of the UPS could lead directly to death, personal injury, or severe physical or property damage, or that would affect operation or safety of any medical or life support device (collectively, "High Risk Activities"). CyberPower expressly disclaims any express or implied warranty of fitness for High Risk Activities. CyberPower does not authorize use of any UPS in any High Risk Activities. ANY SUCH USE IS IMPROPER AND IS A MISUSE OF A CYBERPOWER UPS.

This 1 Year Limited Warranty is governed by the laws of the United States and the State of Minnesota, without reference to conflict of law principles.

The application of the United Nations Convention of Contracts for the International Sale of Goods is expressly excluded.

Contact Information: Cyber Power Systems (USA), Inc., 4241 12th Ave E, Suite 400, Shakopee, MN 55379, (877) 297-6937 (toll free). CyberPower is the warrantor under this 1 Year Limited Warranty. You may also visit CyberPower on the Internet at www.cyberpowersystems.com.



FCC Notice

This device complies with part 15 of the FCC Rules. Operation is subject to the following two conditions: (1) This device may not cause harmful interference, and (2) this device must accept any interference received, including interference that may cause undesired operation.

WARNING!! This equipment has been tested and found to comply with the limits for a Class B Digital Device, pursuant to Part 15 of the FCC Rules. These limits are designed to provide reasonable protection against harmful interference in residential installation. This equipment generates, uses and can radiate radio frequency energy and, if not installed and used in accordance with the instructions, may cause harmful interference to radio communications. However, there is no guarantee that interference will not occur in a particular installation. If this equipment does cause harmful interference to radio or television reception, which can be determined by turning the equipment off and on, the user is encouraged to try to correct the interference by one or more of the following measures: (1) Reorient or relocate the receiving antenna. (2) Increase the separation between the equipment and receiver. (3) Connect the equipment into an outlet on a circuit different from that to which the receiver is connected. (4) Consult the dealer or an experienced radio/TV technician for help. Any special accessories needed for compliance must be specified in the instruction.

The Class B digital apparatus meets all requirements of the Canadian Interference-Causing Equipment Regulation.
Cet appareil numérique de la class B respecte toutes les exigences du Règlement sur le matériel brouilleur du Canada