

SAMSUNG

IF Series Smart Direct-View LED Signage

1.2 mm Pixel Pitch
1.5 mm Pixel Pitch
2.0 mm Pixel Pitch
2.5 mm Pixel Pitch

IF012J
IF015H
IF020H
IF025H

2.5 mm Pixel Pitch
4.0 mm Pixel Pitch
6.0 mm Pixel Pitch

IF025H-D
IF040H-D
IF060H-D



Realistic, seamless brilliance for your indoor customers.

IF Series Smart Direct-View LED Signage

When you're looking for a premium upgrade, Samsung's IF Series delivers an optimal LED experience. The IF Series combines market-leading video processing tools with High Dynamic Range (HDR) picture refinement technology, to maximize brightness and fine-tune overall picture presentation. This unique combination delivers a cutting-edge, captivating viewing experience in virtually any indoor environment. A comprehensive solution, Samsung IF Series signage displays make it easy to share content with minimal hassle, and impress viewers with ease.



Key Features



High Dynamic Range Technology for Superior Images

HDR picture technology optimizes brightness for more realistic viewing, with a full spectrum of color and all the details. It analyzes and fine-tunes grayscale levels within each frame to maximize contrast, while a complementary algorithm removes glare.



Optimize Content Brilliance

Dynamic peaking technology minimizes potential interference from natural or ambient lighting. You can display content at peak brightness levels nearly twice as high as standard LED signage, for content that stands out even against white or dark backgrounds.



Advanced Grayscale

A unique grayscale management algorithm delivers consistent reds, greens and blues without distortion, even in low grayscale settings.



Perfect Calibration

Rigorous factory calibration fine-tunes all IF Series sub-pixels for uniform brightness and color chromaticity out of the box.



Slim and Light Design

The IF Series' sleek frame and screen have a depth of just 90 mm (95mm for IF012J), ensuring compliance with Americans with Disabilities Act (ADA) protrusion regulations.



Full-Front and Rear Access

IF Series displays offer full-front access to critical signage components. Quick-turn maintenance is simplified by making rear display components fully accessible without removal or disassembly.

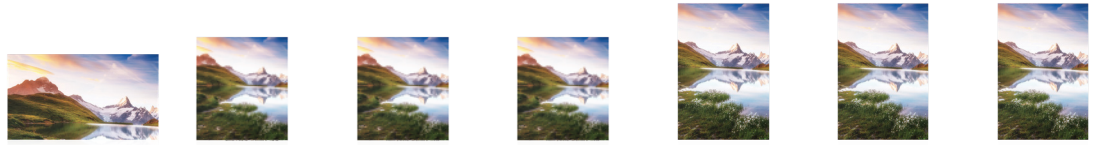


Streamlined Content Management

Samsung's Signage Box (S-Box) consolidates content delivery to a single, centralized device. Transmit UHD content across multiple IF Series displays without needing external boxes or splitters.

Contact Us: samsung.com/b2bdigitalsignage

Samsung IF Series Smart Direct-View LED Signage

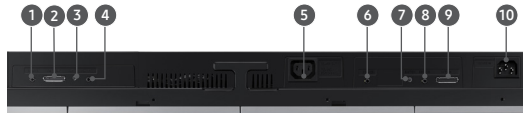


	IF012J	IF015H	IF020H	IF025H	IF025H-D	IF040H-D	IF060H-D	
Physical Parameter	Pixel Pitch	1.2 mm	1.5 mm	2.0 mm	2.5 mm	2.5 mm	6.0 mm	
	Pixel Configuration	1 Red, 1 Green, 1 Blue	1 Red, 1 Green, 1 Blue	1 Red, 1 Green, 1 Blue	1 Red, 1 Green, 1 Blue	1 Red, 1 Green, 1 Blue	1 Red, 1 Green, 1 Blue	
	Configuration (L x H, per Cabinet)	640 x 360 Pixels	320 x 360 Pixels	240 x 270 Pixels	192 x 216 Pixels	192 x 288 Pixels	120 x 180 Pixels	
	Diode Type	Surface Mount Device (SMD)	Surface Mount Device (SMD)	Surface Mount Device (SMD)	Surface Mount Device (SMD)	Surface Mount Device (SMD)	Surface Mount Device (SMD)	
	Dimensions (mm, L x H x D, per Cabinet)	806.4 x 453.6 x 76.7mm	480 x 540 x 65mm	480 x 540 x 65mm	480 x 540 x 65mm	480 x 720 x 65mm	480 x 720 x 65mm	
	Dimensions (inch, inch x D, per Cabinet)	36.4" x 2.95"	28.5" x 2.56"	28.5" x 2.56"	28.5" x 2.56"	34" x 2.56"	34" x 2.56"	
	Weight (per Cabinet)	11.8kg	5.8kg	5.8kg	5.8kg	7.4kg	7.4kg	
Optical Parameter	Brightness (Peak / Max) ¹	1,200 nits / 600 nits	1,600 nits / 800 nits	2,400 nits / 1,200 nits	2,400 nits / 1,200 nits	2,400 nits / 1,200 nits	1,700 nits / 1,200 nits	
	Contrast Ratio (Peak / Max) ¹	8,000:1 / 4,000:1	10,000:1 / 5,000:1	10,000:1 / 5,000:1	10,000:1 / 5,000:1	10,000:1 / 5,000:1	7,000:1 / 5,000:1	
	Viewing Angle - Horizontal / Vertical	160° / 160°	160° / 160°	160° (XD 140° ³) / 160° (XD 140° ³)	160° / 160°	160°	160° / 160°	160° / 160°
	Bit Depth	16 Bit per Color	16 Bit per Color	16 Bit per Color	16 Bit per Color	16 Bit per Color	16 Bit per Color	
	Color Temperature - Default	6,500K	6,500K	6,500K	6,500K	6,500K	6,500K	
	Color Temperature - Adjustable	2,800 - 10,000K (Use S/BOX)	2,800 - 10,000K (Use S/BOX)	2,800 - 10,000K (Use S/BOX)	2,800 - 10,000K (Use S/BOX)	2,800 - 10,000K (Use S/BOX)	2,800 - 10,000K (Use S/BOX)	
	Electrical Parameter	Video Rate	50/60 Hz	50/60 Hz	50/60 Hz	50/60 Hz	50/60 Hz	50/60 Hz
Operation Conditions	Input Power Range	100 - 240 VAC, 50/60 Hz	100 - 240 VAC, 50/60 Hz	100 - 240 VAC, 50/60 Hz	100 - 240 VAC, 50/60 Hz	100 - 240 VAC, 50/60 Hz	100 - 240 VAC, 50/60 Hz	
	Power consumption - Max	711 (W/m ²) / 260 (W/Cabinet)	770 (W/m ²) / 200 (W/Cabinet)	695 (W/m ²) / 180 (W/Cabinet)	620 (W/m ²) / 160 (W/Cabinet)	580 (W/m ²) / 200 (W/Cabinet)	580 (W/m ²) / 200 (W/Cabinet)	
	Power consumption - Typ	237 (W/m ²) / 87 (W/Cabinet)	258 (W/m ²) / 68 (W/Cabinet)	232 (W/m ²) / 60 (W/Cabinet)	206 (W/m ²) / 54 (W/Cabinet)	193 (W/m ²) / 67 (W/Cabinet)	193 (W/m ²) / 67 (W/Cabinet)	
	Heat generation - Max (BTU / SF)	225 BTU / SF per Hour	245 BTU / SF per Hour	220 BTU / SF per Hour	196 BTU / SF per Hour	184 BTU / SF per Hour	184 BTU / SF per Hour	
	Refresh Rate	3,840 Hz	1,920Hz, 3,840 Hz Selectable	1,920Hz, 3,840 Hz Selectable	1,920Hz, 3,840 Hz Selectable	1,920Hz, 3,840 Hz Selectable	1,920Hz, 3,840 Hz Selectable	
	Working Temperature / Humidity	0°C - 40°C / 10 - 80%RH	0°C - 40°C / 10 - 80%RH	0°C - 40°C / 10 - 80%RH	0°C - 40°C / 10 - 80%RH	0°C - 40°C / 10 - 80%RH	0°C - 40°C / 10 - 80%RH	
	Storage Temperature / Humidity	-20°C - 45°C / 5 - 95%RH	-20°C - 45°C / 5 - 95%RH	-20°C - 45°C / 5 - 95%RH	-20°C - 45°C / 5 - 95%RH	-20°C - 45°C / 5 - 95%RH	-20°C - 45°C / 5 - 95%RH	
Certification	IP Rating	IP20	IP20	IP20	IP20	IP20	IP20	
	LED Lifetime	100,000 Hours	100,000 Hours	100,000 Hours	100,000 Hours	100,000 Hours	100,000 Hours	
	Certification	EMC Class B, Safety 60950-1	EMC Class A, Safety 60950-1	EMC Class A, Safety 60950-1	EMC Class A, Safety 60950-1	EMC Class A, Safety 60950-1	EMC Class A, Safety 60950-1	
	Service	Front Service / Parts rear service ²	Front Service and / or Rear Service	Front Service and / or Rear Service	Front Service and / or Rear Service	Front Service and / or Rear Service	Front Service and / or Rear Service	
Package	Box Dimension (mm, L x H x D)	943 x 606 x 167	606 x 667 x 179	606 x 667 x 179	606 x 667 x 179	606 x 847 x 179	606 x 847 x 179	
	Box Volume (?)	0.095	0.073	0.073	0.073	0.092	0.092	
	Package Weight (kg, per Cabinet)	16.5kg	9.1kg	9.1kg	9.1kg	10.4kg	10.4kg	
Curve Installation	Concave	N/A	6000R	6000R	6000R	6000R	6000R	
	Convex	N/A	N/A	N/A	N/A	N/A	6000R	

(1) Peak Value according to IDMS (Information Display Measurement Standard)
 (2) T-Con / Power supply can be accessible from rear
 (3) According to the XD LED characteristics

Connectivity

1. Service
2. Data Out
3. Switch
4. Service
5. Power Out
6. Service
7. Switch
8. Service
9. Data In
10. Power In



Learn More
 Product Support
 Follow Us

samsung.com/business insights.samsung.com samsung.com/b2bdigitalsignage
 1-866-SAM4BIZ
[youtube.com/samsungbizusa](https://www.youtube.com/samsungbizusa) [@SamsungBizUSA](https://twitter.com/SamsungBizUSA)

SAMSUNG