

Register your product and get support at

www.philips.com/welcome

GoGEAR

SA4DOT02

SA4DOT04

SA4DOT08



User manual

PHILIPS

Contents

1	Important safety information	4
	General maintenance	4
	Recycling the product	6

2	Your new player	7
	What's in the box	7
	PC software for the player	7
	Files loaded on the player	7
	Overview	7
	Controls	7
	LED indicator and audio feedback	8

3	Get started	9
	Charge power	9
	Switch the player on or off	9
	Automatic standby and shut-down	9

4	Play music	10
	Transfer music to the player	10
	Play music	10
	Search for a song	10
	Change the volume level	10
	Switch the random play on or off	10

5	Sync with PC music library through Philips Songbird	11
	Install Philips Songbird on your PC	11
	Collect music files from the PC	11
	Set the watch folder	11
	Import music files	13
	Sync the player with Philips Songbird	13
	Select auto or manual sync	13
	Auto sync	13
	Manual sync	14

6	Update the firmware through Philips Songbird	15
----------	---	-----------

7	Repair the player through Philips Songbird	16
----------	---	-----------

8	Technical data	17
	PC requirements	17

Need help?

Please visit www.philips.com/welcome where you can access a full set of supporting materials such as user manual, the latest software updates and answers to frequently asked questions.

1 Important safety information

General maintenance

The translation of this document is for reference only.

In the event of any inconsistency between the English version and the translated version, the English version shall prevail.

! Caution

- To avoid damage or malfunction:
- Do not expose the product to excessive heat caused by heating equipment or direct sunlight.
- Do not drop the product or allow objects to fall on your player.
- Do not allow the product to be submerged in water; Do not expose headphone socket or battery compartment to water; as water entering the set may cause major damage.
- Active mobile phones in the vicinity may cause interference.
- Back up your files. Ensure that you retain the original files you have downloaded to your device. Philips is not responsible for any loss of data if the product becomes damaged or not readable / legible.
- Manage (transfer, delete, etc.) your music files only with the supplied music software to avoid problems.
- Do not use any cleaning agents containing alcohol, ammonia, benzene, or abrasives as these may harm the product.

About operating and storage temperatures

- Operate in a place where temperature is always between 0 and 35°C (32 to 95°F)
- Store in a place where temperature is always between -20 and 45°C (-4 to 113°F).
- Battery life may be shortened in low temperature conditions.

Replacement parts/accessories:

Visit www.philips.com/support to order replacement parts/accessories.

Hearing Safety



At full power, the prolonged listening of the walkman can damage the ear of the user.

Listen at a moderate volume:

Using headphones at a high volume can impair your hearing. This product can produce sounds in decibel ranges that may cause hearing loss for a normal person, even for exposure less than a minute. The higher decibel ranges are offered for those that may have already experienced some hearing loss.

Sound can be deceiving. Over time your hearing 'comfort level' adapts to higher volumes of sound. So after prolonged listening, what sounds 'normal' can actually be loud and harmful to your hearing. To guard against this, set your volume to a safe level before your hearing adapts and leave it there.

To establish a safe volume level:

Set your volume control at a low setting. Slowly increase the sound until you can hear it comfortably and clearly, without distortion.

Listen for reasonable periods of time:

Prolonged exposure to sound, even at normally 'safe' levels, can also cause hearing loss.

Be sure to use your equipment reasonably and take appropriate breaks.

Be sure to observe the following guidelines when using your headphones.

Listen at reasonable volumes for reasonable periods of time.

Be careful not to adjust the volume as your hearing adapts.

Do not turn up the volume so high that you can't hear what's around you.

You should use caution or temporarily discontinue use in potentially hazardous situations.

Do not use headphones while operating a motorized vehicle, cycling, skateboarding, etc.; it may create a traffic hazard and is illegal in many areas.

Modifications

Modifications not authorized by the manufacturer may void user's authority to operate the product.

Copyright information

All other brands and product names are trademarks of their respective companies or organizations.

Unauthorized duplication of any recordings whether downloaded from the Internet or made from audio CDs is a violation of copyright laws and international treaties.

The making of unauthorized copies of copy-protected material, including computer programs, files, broadcasts and sound recordings, may be an infringement of copyrights and constitute a criminal offense. This equipment should not be used for such purposes.

The Windows Media and the Windows logo are registered trademarks of Microsoft Corporation in the United States and/or other countries.

Be responsible! Respect copyrights.



Philips respects the intellectual property of others, and we ask our users to do the same. Multimedia content on the internet may have been created and/or distributed without the original copyright owner's authorization. Copying or distributing unauthorized content may violate copyright laws in various countries including yours. Compliance with copyright laws remains your responsibility.

The recording and transfer to the portable player of video streams downloaded to your computer is intended only for use with public domain or properly licensed content. You may only use such content for your private, non-commercial use and shall respect eventual copyright instructions provided by the copyright owner of the work. Such instruction may state that no further copies shall be made. Video streams may include copy protection technology that prohibits further copying. For such situations the recording function will not work and you will be notified with a message.

Data logging

Philips is committed to improving the quality of your product and enhancing the Philips user experience. To understand the usage profile of this device, this device logs some info / data to the non-volatile memory region of the device. These data are used to identify and detect any failures or problems you as a user may experience while using the device. The data stored, for example, will be the duration of playback in music mode, duration of playback in tuner mode, how many times battery low was encountered, etc. The data stored do not reveal the content or media used on the device or the source of downloads. The data stored on the device are retrieved and used ONLY if the user returns the device to the Philips service center and ONLY to simplify error detection and prevention. The data stored shall be made available to user on user's first request.

Recycling the product

Your product is designed and manufactured with high quality materials and components, which can be recycled and reused. When you see the crossed-out wheel bin symbol attached to a product, it means the product is covered by the European Directive 2002/96/EC:



Never dispose of your product with other household waste. Please inform yourself about the local rules on the separate collection of electrical and electronic products. The correct disposal of your old product helps prevent potentially negative consequences on the environment and human health.

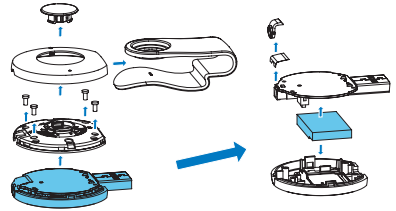
Warning

- Removal of the built-in battery invalidates the warranty and can destroy the product.
- The following removal and disposal instructions are steps that are to be performed at the end of the product's life only.

Your product contains a built-in rechargeable battery covered by the European Directive 2006/66/EC, which cannot be disposed of with normal household waste.



To safeguard the functionality and safety of your product, take your product to an official collection point or service center where a professional can remove the battery as shown:



Please inform yourself about the local rules on separate collection of batteries. The correct disposal of batteries helps prevent potentially negative consequences on the environment and human health.

Notice for the European Union

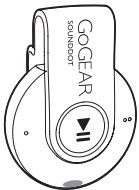
This product complies with the radio interference requirements of the European Union.

2 Your new player

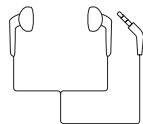
What's in the box

Make sure that you have received the following items:

Player



Earphones



Quick start guide



Safety and Warranty sheet



Note

- The images serve as reference only. Philips reserves the right to change color/design without notice.

PC software for the player

The following PC software can work with SOUND DOT:

- **Philips Songbird** (helps you update the firmware of the player; and sync songs from your PC music library to the player).

To get **Philips Songbird**,

- On your PC, download **Philips Songbird** from www.philips.com/Songbird or www.philips.com/support.

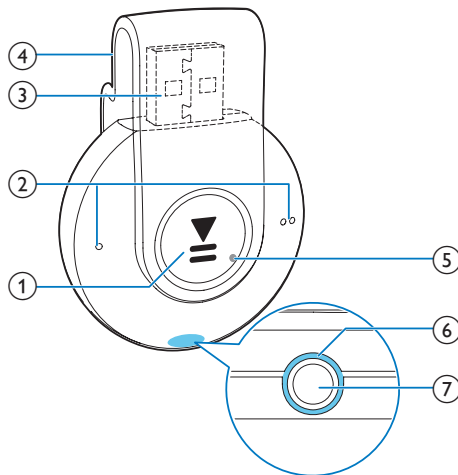
Files loaded on the player

The following files are loaded on **SOUND DOT**:


- User manual

Overview

Controls

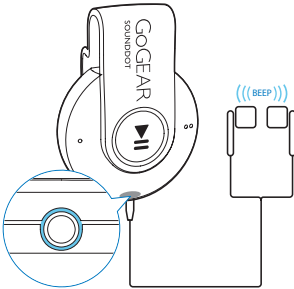


- 1 **▶▶**
 - Press and hold: Switch the player on or off
 - Press: Pause/ resume play
 - Press twice during play: Switch the random play on or off

- ② ● / ● ●
 - Press: Decrease or increase the volume
 - Press and hold: Skip to the previous or next song
- ③ **USB connector for power charging and data transfer**
- ④ **Clip**
- ⑤ **RESET**
 - Press the hole by using the tip of a ball pen when the player does not respond to the pressing of keys
- ⑥ **LED indicator**
- ⑦  3.5 mm-headphone connector

LED indicator and audio feedback

With the LED indicator and/ or audio feedback, you can know the status of the player.

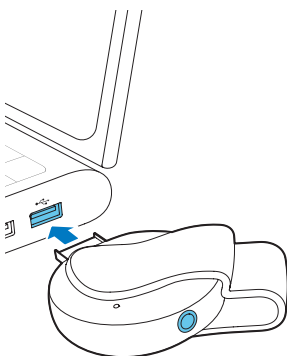


3 Get started

Charge power

SOUND DOT has a built-in battery that can be charged through the USB socket of a computer.

- Rotate the USB connector to connect **SOUND DOT** to a PC.
 - ↳ During power charging, the indicator changes its color to denote the battery level.
 - ↳ When the battery is full, the green indicator lights up.

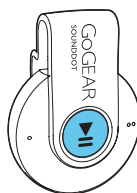


Tip

- When the battery level is lower than 15%, the red indicator flashes and two beeps sound.
- Rechargeable batteries have a limited number of charge cycles. Battery life and number of charge cycles vary by use and settings.

Switch the player on or off

- Press and hold **▶||** until the green or red indicator lights up.
 - ↳ **Power on:** The green indicator lights up. Music play starts.
 - ↳ **Power off:** The red indicator lights up. One beep sounds.

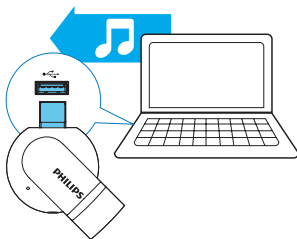


Automatic standby and shut-down

The player has an automatic standby and shut-down feature that can save battery power. After five minutes in idle mode (no play, no button is pressed), the player switches off.

4 Play music

Transfer music to the player



You can transfer music from your PC media library to **SOUNDDOT** in the following ways:

- Drag and drop music files in Windows Explorer;
- Sync through Philips Songbird (see 'Sync with PC music library through Philips Songbird' on page 11).

To drag and drop music files in Windows Explorer,

- 1 Connect **SOUNDDOT** to a PC.
- 2 On the PC, under **My Computer** or **Computer**,
 - drag and drop music files from the PC to **SOUNDDOT**.

- ↳ The green indicator lights up. Music play starts.
- ↳ During music play, the green indicator flashes at intervals.

- 2 Press **▶||** to pause or resume play.

Search for a song

- Press and hold **● / ● ●** to skip to the previous or next song.
 - ↳ One beep sounds.

Change the volume level

- Press **● / ● ●**.
 - ↳ During music play, you hear the change of volume level.

Switch the random play on or off

- 1 During music play, press **▶||** twice.
 - ↳ You hear two beeps. The green indicator flashes twice at intervals.
 - ↳ Songs play in random.
- 2 To switch off the random play, press **▶||** twice again.
 - ↳ You hear one beep. The green indicator flashes once at intervals.
 - ↳ Songs play in sequence.

Play music



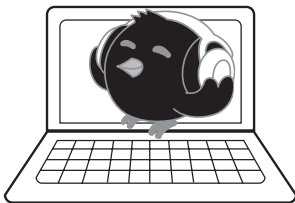
- 1 Make sure that you have switched on the player (see 'Switch the player on or off' on page 9).

5 Sync with PC music library through Philips Songbird

With **Philips Songbird**, you can do the following:

- Manage your music collection on a PC;
- Sync **SOUND DOT** with your PC music library;
- Register **SOUND DOT** on www.philips.com/welcome;
- Update the firmware of **SOUND DOT** (see 'Update the firmware through Philips Songbird' on page 15);
- Repair **SOUND DOT** (see 'Repair the player through Philips Songbird' on page 16).

Install Philips Songbird on your PC



Download Philips Songbird to your PC

- 1 Connect your PC to the Internet.
- 2 From www.philips.com/Songbird or www.philips.com/support, download **Philips Songbird**.

Install Philips Songbird on your PC

- 1 Double-click the downloaded .exe file of **Philips Songbird**.
↳ A pop-up screen is displayed.

- 2 Select your language and country.
- 3 Follow the onscreen instructions to complete the installation.

Note

- The installation requires you to agree to the license terms.

Collect music files from the PC

Set the watch folder

Create a central folder

You can have all music files automatically added to your library when you copy them to a folder. Creating a central folder is recommended. In **Philips Songbird**, set the central folder as the watch folder. Each time you launch **Philips Songbird**, songs are added to/ removed from **Philips Songbird** as they are on the central folder.

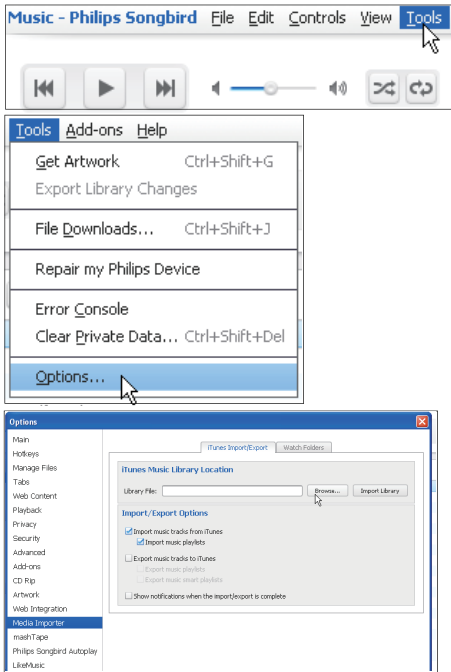
On the PC, create a central folder to save all music files, for example, D:\Songbird media.

First-time launch

The first time you launch **Philips Songbird** on a PC, do the following as prompted to import existing media files into **Philips Songbird**:

- Select the iTunes media folder to import an existing iTunes library;
- Select the central folder to search and import the existing music files.
↳ The central folder is set as the watch folder of **Philips Songbird**.

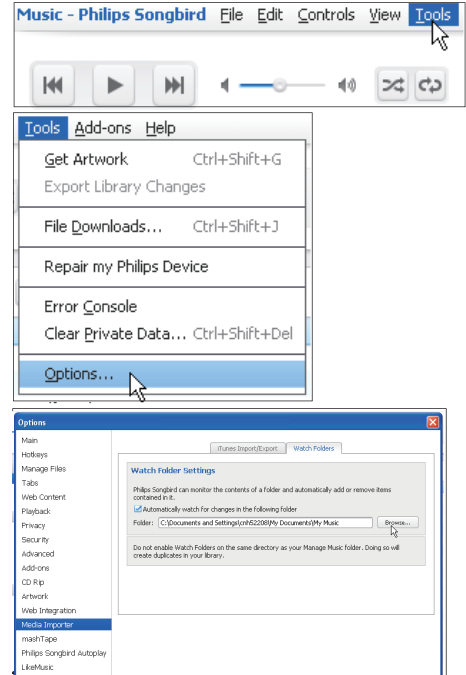
Set iTunes media folder



- 1 On Philips Songbird, go to **Tools > Options...**
- 2 Select **Media Importer**, and then the **iTunes Importer** tab.
- 3 Verify your library location and options.
- 4 Click the **Import Library** button next to the library location.
↳ The software imports the iTunes library into **Philips Songbird**.

Set the watch folder

In Philips Songbird, set the watch folder as follows:



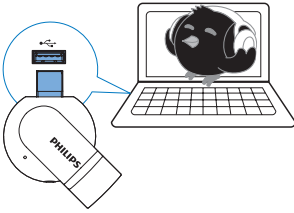
- 1 Select **Tools > Options**.
- 2 In **Options**, select **Media Importer**. Then, select the **Watch Folders** tab.
- 3 In **Watch Folders**, tick the check box as shown.
- 4 Click **Browse**, and select the central folder (e.g. D:\Songbird media) as the watch folder.
↳ In **Philips Songbird**, media files are added or removed as they are in the central music folder.

Import music files

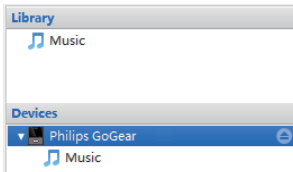
In **Philips Songbird**,

- go to **File > Import Media** to select folders on the PC.
 - ↳ Music files are added under **Library**.

Sync the player with Philips Songbird



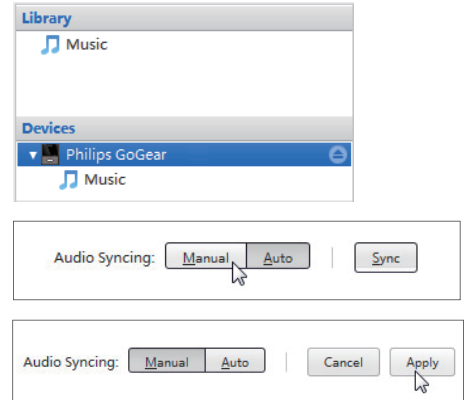
- 1 On the PC, launch **Philips Songbird**.
- 2 Connect the player to the PC.
 - ↳ On **Philips Songbird**, the player is displayed when it is recognized by the PC.



Select auto or manual sync

The first time you connect the player to **Philips Songbird**, select auto sync as prompted. The player sync with **Philips Songbird** automatically. If you do not select auto sync, you switch on the manual sync.

To select auto or manual sync,



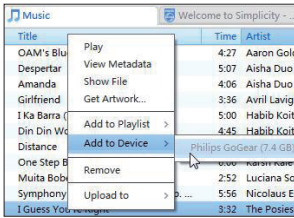
- 1 Select the player under **Devices**.
 - ↳ A pop-up screen is displayed.
- 2 On the pop-up screen, select **Manual** or **Auto**.
- 3 To confirm the option, click **Apply**.

Auto sync

- If you have selected auto sync, auto sync starts automatically when you connect the player to a PC;
- Alternatively, select the player under **Devices**, and click **Sync**.

Manual sync

To transfer selected media files manually,



- 1 On the Content pane, right click on a selected media file.
- 2 Select **Add to Device > SOUNDDOT**.
↳ Selected files are transferred to **SOUNDDOT**.



Tip

- To select multiple files at the same time, hold down the **Ctrl** button when you click options.

6 Update the firmware through Philips Songbird

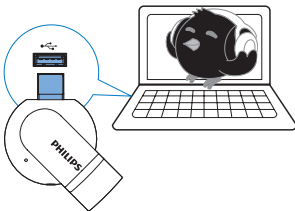
SOUND DOT is controlled by an internal program called firmware. Newer versions of the firmware may have been released after you have purchased **SOUND DOT**.

Through **Philips Songbird**, you can check for and install firmware updates for **SOUND DOT** over the Internet.

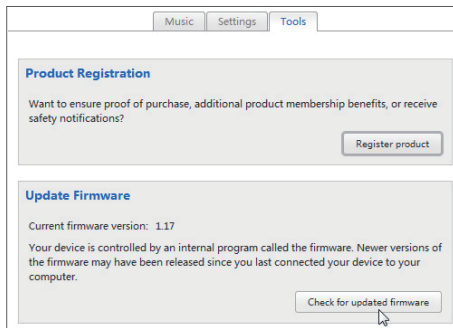
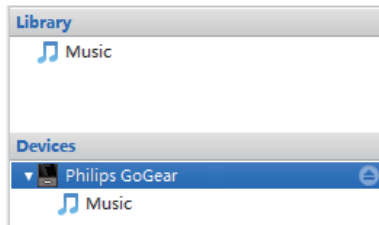


Tip

- Your music files are not affected by a firmware update.



- 1 Make sure that you have connected your PC to the Internet.
- 2 Connect **SOUND DOT** to the PC.
- 3 On the PC, launch **Philips Songbird**.
 - If necessary, click **Start > Programs > Philips > Philips Songbird**.
- 4 Click **SOUND DOT** in the Player pane. Then, select **Tools > Check for updated firmware** in the pop-up window.
 - ↳ **Philips Songbird** checks for updates from the Internet.



- 5 Follow the onscreen instructions.
 - ↳ Downloading and installation of firmware update start automatically.
 - ↳ The **SOUND DOT** restarts after the firmware is updated and is ready for use again.

Note

- Wait until the update is completed, then disconnect the **SOUND DOT** from the computer.

7 Repair the player through Philips Songbird

If **SOUND DOT** is not working properly or the display freezes, you can reset it without losing data:

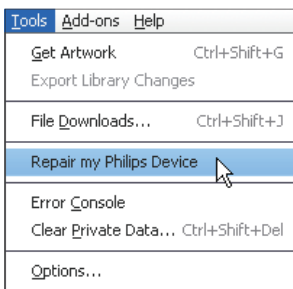
To reset **SOUND DOT**?

- Insert a pen tip or other object into the reset hole at the base of **SOUND DOT**. Hold until the player shuts down.

If you fail to reset the player, repair the player through Philips Songbird:

- 1 On your PC, launch **Philips Songbird**.
 - If your PC runs Windows 7, launch **Philips Songbird** as administrator. Right-click **Philips Songbird** and select **Run as Administrator**.

- 2 In **Philips Songbird**,



- select **Tools > Repair my Philips Device**;
 - select **SOUND DOT** in the pop-up list.
- 3 Connect the player to the PC.
 - **Make sure that you follow the onscreen instructions on how to connect the player to the PC.**
 - 4 Follow the onscreen instructions to complete the repair.

8 Technical data

Power

- Power supply: 110 mAh Li-ion polymer internal rechargeable battery
- Play time¹
Audio (.mp3): up to 6 hours
- Fast charging: 6-minute charging for 60-minute play

Software

- Philips Songbird: To update firmware and transfer music

Connectivity

- Headphone 3.5 mm
- USB 2.0 High speed

Sound

- Channel separation: 45 dB
- Frequency Response: 20-18,000 Hz
- Output power: 2 x 2.4 mW
- Signal to noise ratio: > 84 dB

Audio playback

Supported formats:

- MP3
Bitrate: 8-320 kbps and VBR
Sampling rates: 8, 11.025, 16, 22.050, 32, 44.1, 48 kHz
- WMA (unprotected)
Bitrate: 5-320 kbps
Sampling rates: 8, 11.025, 16, 22.050, 32, 44.1, 48 kHz
- WAV

Storage media

Built-in memory capacity²:

- SA4DOT02 2 GB NAND Flash
- SA4DOT04 4 GB NAND Flash
- SA4DOT08 8 GB NAND Flash

Media transfer³

- Windows Explorer (drag and drop)
- Songbird (sync)

Note

- Specifications are subject to change without notice.
- ¹ Rechargeable batteries have a limited number of charge cycles. Battery life and number of charge cycles vary by use and settings.
- ² 1 GB = 1 billion bytes; available storage capacity is less. Full memory capacity may not be available as some memory is reserved for the player. Storage capacity is based on 4 minutes per song and 128-kbps MP3 encoding.
- ³ Transfer speed depends on operating system and software configuration.

PC requirements

- Windows® XP (SP3 or above) / Vista / 7
- Pentium III 800 MHz processor or higher
- 512 MB RAM
- 500 MB hard disk space
- Internet connection
- Windows® Internet Explorer 6.0 or later
- CD-ROM drive
- USB port

