

Multi Stream Transport Hub – Mini DisplayPort™ 1.2 to Triple Head DisplayPort MST Hub

StarTech ID: MSTMDP123DP



The StarTech.com mDP to DP MST Hub lets you connect three independent DisplayPort monitors to your Mini DisplayPort 1.2 device. The MST hub is VESA and DisplayPort certified to support Windows mDP 1.2 enabled computer systems.

This MST hub has a newly engineered chipset that has been specifically designed to resolve compatibility issues with the Microsoft Surface Pro 3. The new chipset has been rigorously tested by StarTech.com for guaranteed capability with your Microsoft Surface Pro 3, adding up to three displays to your workstation.

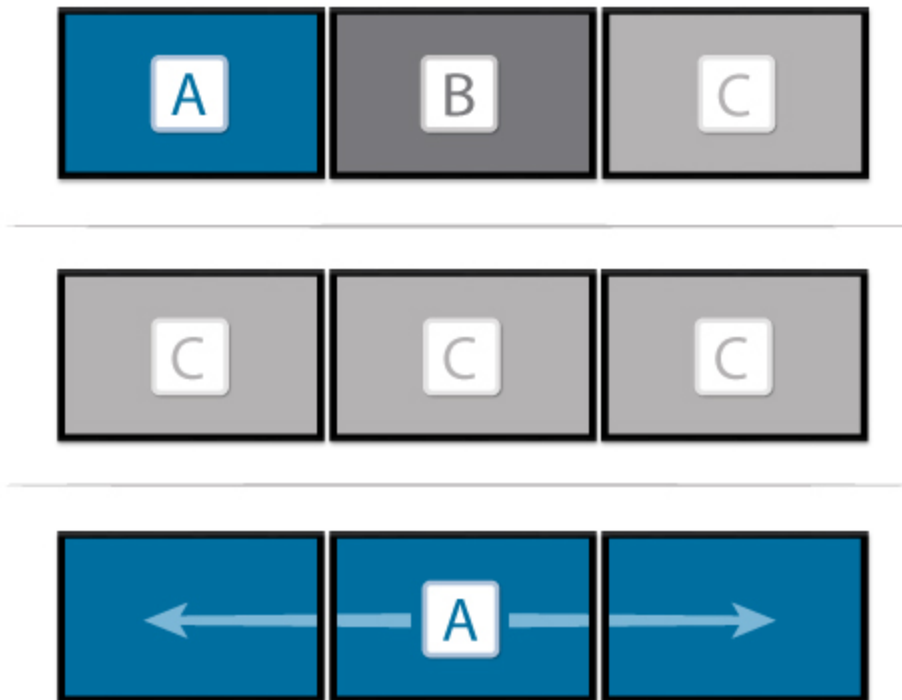


The surface Pro 3 only supports the use of three displays in total. If more than two additional monitors are attached the built-in screen will be disabled.

Extend Your Display – Increase Productivity with multiple screens

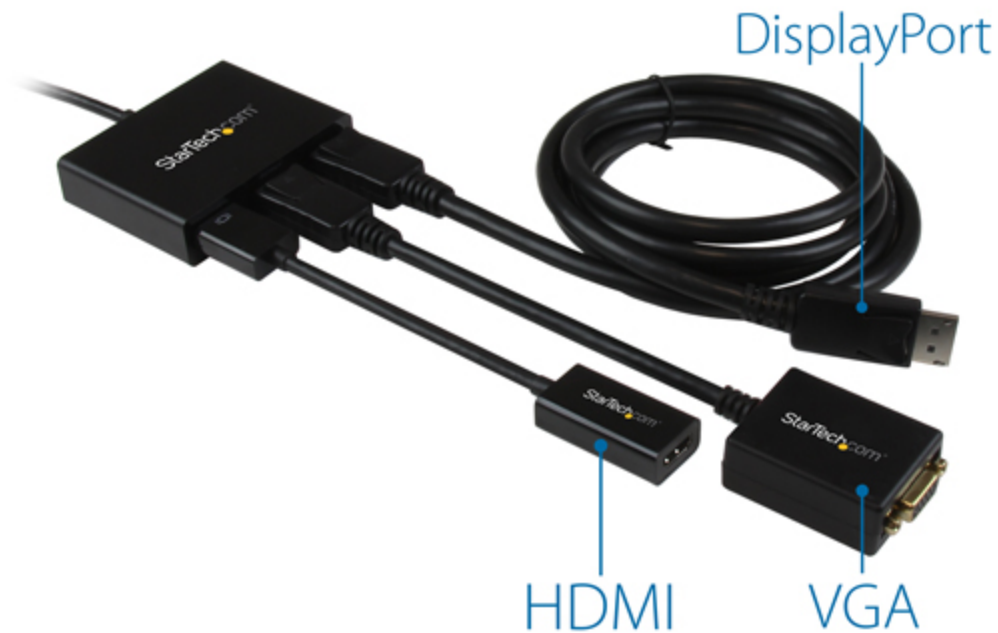
Computer manufacturers today are making your devices smaller and more portable, with fewer video out options, and small integrated screens. The MSTMDP123DP solves both of these problems by letting you connect three independent displays to your Mini DisplayPort (1.2) output.

You can extend your desktop onto additional monitors and stream independent content to each individual display to vastly increase your productivity by giving you the freedom to multitask. Mirror the same image onto multiple displays, for remote viewing applications. Or create a Single Large Surface (SLS), such as a video wall for a submersible gaming atmosphere, or an impressive digital signage application. You can also use two MSTMDP123DP with your AMD Radeon graphics card, enabling you to add up to 6 independent displays.



Extend Your Compatibility – Works with HDMI, VGA & DVI Adapters

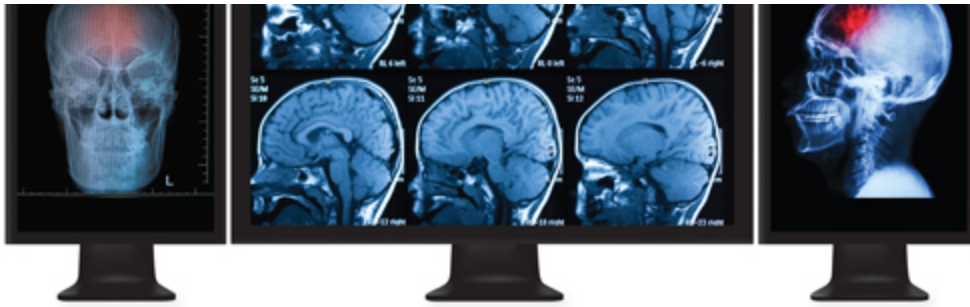
With the MSTMDP123DP you can use DisplayPort video adapters and cable adapters that enable you to connect HDMI, VGA or DVI displays. This ensures your MST hub will be compatible with virtually any television, monitor or projector, making harmonization with your existing video equipment easy.



Extend Your Performance – Achieve unprecedented external video quality

MST technology uses your existing video card to minimize the use of system resources, ensuring the highest performing external video solution possible. MST offers 10.2 Gbps of bandwidth to share across multiple displays to achieve Ultra HD 4K resolutions. This unprecedented performance makes MST perfect for high-resolution applications such as graphic design, gaming and medical imaging.





Note: When using a DisplayPort 1.1 video card the MSTMDP123DP will act as splitter, automatically mirroring your video source across all displays. Resolution limitations apply.

The MSTMDP123DP supports plug-and-play installation for a hassle-free setup, and is backed by a StarTech.com 2-year warranty and free lifetime technical support.

Note: MST shares 10.2 Gbps across all attached displays. Higher resolutions can restrict the available bandwidth with the remaining ports, please see our guideline below for determining an ideal resolution for your setup. Certain graphics adapters have limited MST support and will only output to three displays in total. If more than three monitors are attached the fourth will be disabled.

Average Resolution Bandwidth Allocation

- 1920x1080 (High-definition 1080p) @60hz – 22%
- 1920x1200 @60hz – 30%
- 2560x1440 @60hz – 35%
- 2560x1600 @60hz – 38%
- 3840 x 2160 (Ultra HD 4K) @30hz – 38%

Note: Exceeding 100% will reduce functionality.

Examples of Supported Resolution Configurations

Screen 1 Resolution	Screen 2 Resolution	Screen 3 Resolution	Total % of Bandwidth
1920x1200 @60hz (30%)	1920x1200 @60hz (30%)	1920x1200 @60hz (30%)	90%
2560x1440 @60hz (35%)	2560x1440 @60hz (35%)	1920x1200 @60hz (30%)	92%
2560x1600 @60hz (38%)	2560x1600 @60hz (38%)	1920x1080 @60hz (22%)	98%

Screen 1 Resolution	Screen 2 Resolution	Screen 3 Resolution	Total % of Bandwidth
3840x2160 @30hz (38%)	2560x1600 @60hz (38%)	1920x1080 @60hz (22%)	98%
3840x2160 @30hz (38%)	3840x2160 @30hz (38%)	1920x1080 @60hz (22%)	98%

Examples of Unsupported Resolution Configurations

Screen 1 Resolution	Screen 2 Resolution	Screen 3 Resolution	Total % of Bandwidth
2560x1600 @60hz (38%)	2560x1600 @60hz (38%)	1920x1200 @60hz (30%)	106%
3840x2160 @30hz (38%)	2560x1600 @60hz (38%)	1920x1200 @60hz (30%)	106%
3840x2160 @30hz (38%)	2560x1600 @60hz (38%)	2560x1440 @60hz (35%)	111%
3840x2160 @30hz (38%)	3840x2160 @30hz (38%)	3840x2160 @30hz (38%)	114%

Applications

- Add additional displays to your Surface Pro 3
- Use one screen for reference data such as websites, while composing in another screen
- Dock your mDP 1.2 device and add three high-resolution displays at your workstation
- Create a panoramic video wall for DisplayPort digital signage applications
- Edit images, video or audio clips across three displays in any orientation or resolution
- Perfect for spanning a spreadsheet/worksheet across all three displays, to avoid side-scrolling
- Enjoy the panoramic views built into games and display helpful codes/walk-through data on a third display, at the same time

Features

- Maximize your productivity by connecting up to three independent displays to your computer using the MST Hub
- Connect to almost any television, monitor or projector with the support of low cost adapters
- Newly engineered chipset for increased compatibility with Microsoft Surface Pro 3
- Increase external video performance with support for resolutions up to 4K
- VESA and DisplayPort certified
- Compatible with DP1.2 Graphics cards such as AMD Eyefinity Technology & AMD Radeon
- Plug-and-play installation

Technical Specifications

Warranty	2 Years
Audio	Yes
Converter Type	MST Hub
Output Signal	DisplayPort
Ports	3
Maximum Digital Resolutions	Up to 4K
Wide Screen Supported	Yes
Connector A	1 - Mini-DisplayPort (20 pin) Male
Connector B	3 - DisplayPort (20 pin) Latching Female
Note	DisplayPort 1.2 with MST+HBR2 support from the GPU is required for independent display output
Color	Black
Enclosure Type	Plastic
Product Height	0.8 in [20 mm]
Product Length	7.9 in [200 mm]
Product Weight	3.4 oz [95 g]
Product Width	3.1 in [78 mm]
Center Tip Polarity	Positive
Input Current	0.5 A
Input Voltage	110 ~ 240 AC
Output Current	3A
Output Voltage	5 DC
Plug Type	N
Power Source	AC Adapter Included
Operating Temperature	0°C to 45°C (32°F to 113°F)
Storage Temperature	-20°C to 70°C (-4°F to 158°F)
Shipping (Package) Weight	1.3 lb [0.6 kg]
Included in Package	1 - Mini DisplayPort to DisplayPort MST Hub

Included in Package	1 - Universal Power Adapter (NA/EU/UK/AUS)
Included in Package	1 - Instruction Manual

Certifications, Reports and Compatibility

