

Start Here

Your BrightLink projector is a productivity tool that allows you to project and interact with content or create a digital whiteboard. This card will help you get started.

What can you do?

Interact with your computer

View your desktop and use the interactive pens as a mouse.

Use your mobile device

Connect your mobile device and display your content on the screen.


Project from any source

Import content from a connected device to your whiteboard.

Start writing

Draw on the projected screen with the interactive pens or your finger.

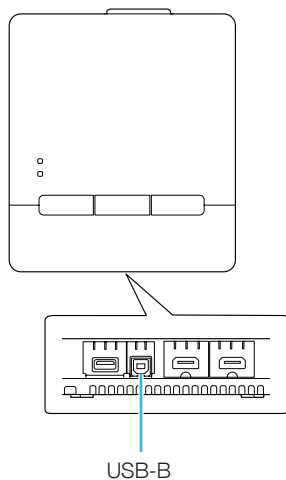
Interacting with your computer



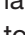
1 Turn on the projector by pressing the  power button on the remote control or the projector control pad.

2 Connect an HDMI cable from the projector control pad to your computer.



3 Connect the USB cable from the projector control pad's **USB-B** port directly to any available USB port on your computer.



4 The default language of the menu system is English. To select another language, press the **Menu** button on the remote control. Select **Management** and press . Select **Language** and press . Select your language and press . Press the **Menu** or **Esc** button to exit the menu system.

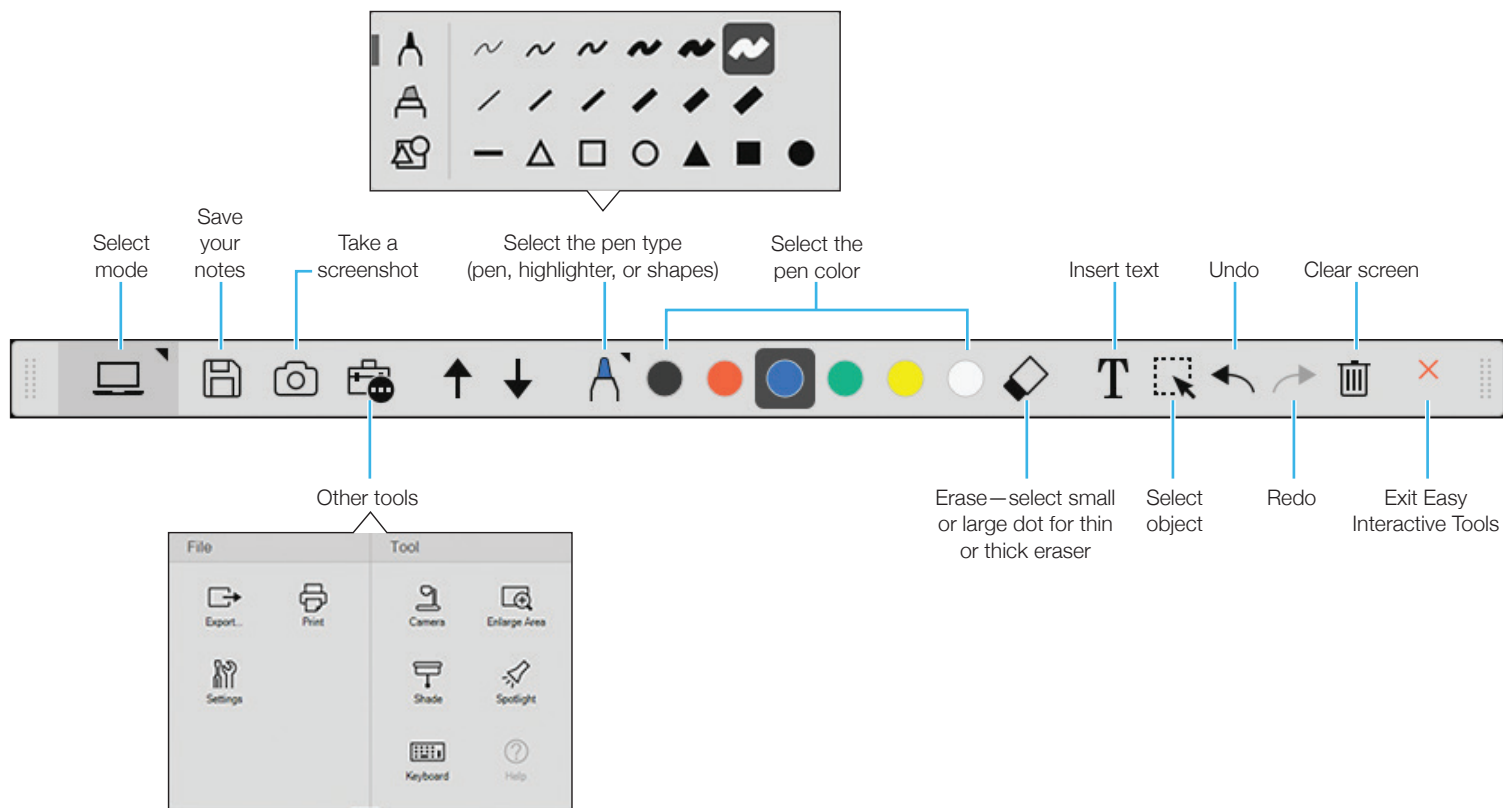
5 Display an image or open a web page from your computer.

If your computer screen is not projected, see “Need help?” on the back of this card.

Using interactive software

To interact using your Mac or Windows® computer, you need the latest version of Easy Interactive Tools (or other interactive software). If you are using a Mac, you also need Easy Interactive Driver. If the latest software is not installed, download it from: www.epson.com/brightlinkdownloads (U.S.), www.epson.ca/brightlinkdownloads (Canada), or www.epson.com.jm/support (Caribbean).

When your computer is connected, you can use the Easy Interactive Tools toolbar to interact with projected content.



For more information about Easy Interactive Tools, see the online *Easy Interactive Tools Operation Guide* and the *BrightLink User's Guide*.

If the computer is also connected to the projector control pad's **USB-B** port, you can use the interactive pens or your finger as a mouse to interact with your computer desktop.

Mouse function	Pen/finger action
Left-click	Tap board
Double-click	Tap twice
Right-click	Press pen button Tap and hold finger for 3 seconds
Move cursor	Hover over board
Click and drag	Tap and hold item, then drag

If your computer supports these functions, you can also do the following:

- To zoom in or out, touch an item using two fingers and either move your fingers away from each other (zoom in) or toward each other (zoom out).
- To rotate an image, touch the image with two fingers and then rotate your hand.
- To scroll up or down on a page, or move backward or forward in a browser window, use swiping gestures or flicks.

Interacting without a computer


You can use your BrightLink projector without a computer. Start a lesson or brainstorm session from scratch in Whiteboard mode or import or project content from other connected devices and annotate them in PC Free Annotation mode. With a network connection, you can save, print, or email your work when you're done.

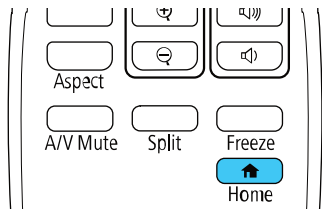
Note: Many of the projector's built-in toolbar functions are the same as Easy Interactive Tools, but fewer functions are available.


Whiteboard mode

Whiteboard mode lets you project a blank screen or background pattern, and use the interactive pens or your fingers to write or draw as you would on a dry erase board. You can add new blank pages to continue working and switch easily between pages.



1 Turn on the projector from the control pad or the remote control.

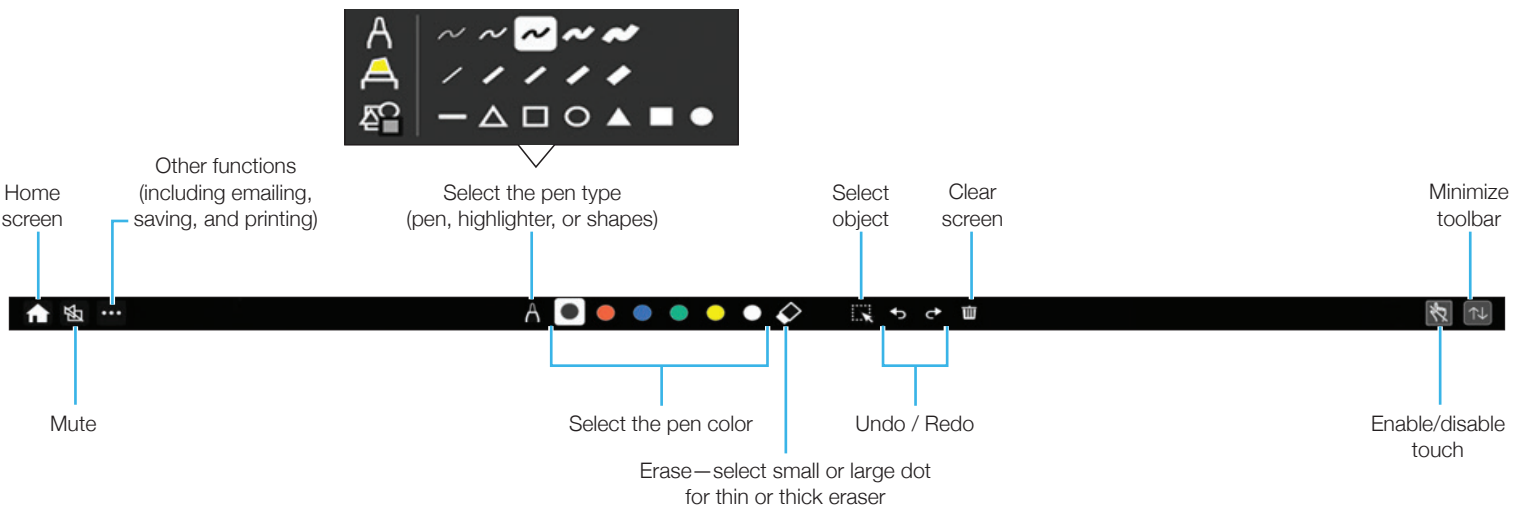
2 Press the  **Home** button on the remote control.




3 Select  **Whiteboard** from the screen. You see the whiteboard screen and toolbar.

4 Pick up an interactive pen or touch your finger to the screen and start writing.

You can select  **Share Projection** from the toolbar's  menu to allow devices that have the Epson iProjection™ app installed to interact with the screen.



 Add a new page

 Delete the current page

 Open a file

 Import an image

Connecting a mobile device

Connect a mobile device, tablet, or other source to your networked projector and work in PC Free Annotation mode with the projector's built-in toolbar.

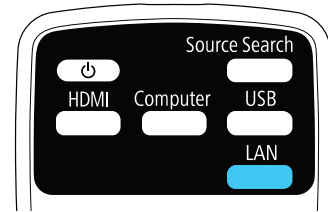
- 1 Turn on the projector from the control pad or the remote control.
- 2 Connect your Android™ or iOS device to the wireless network your projector is connected to.



- 3 Download and launch the Epson iProjection app on your device (visit www.epson.com/iprojection [U.S.], www.epson.ca/iprojection [Canada], or www.latin.epson.com/iprojection [Caribbean] for more information), select the projector, and display your content.



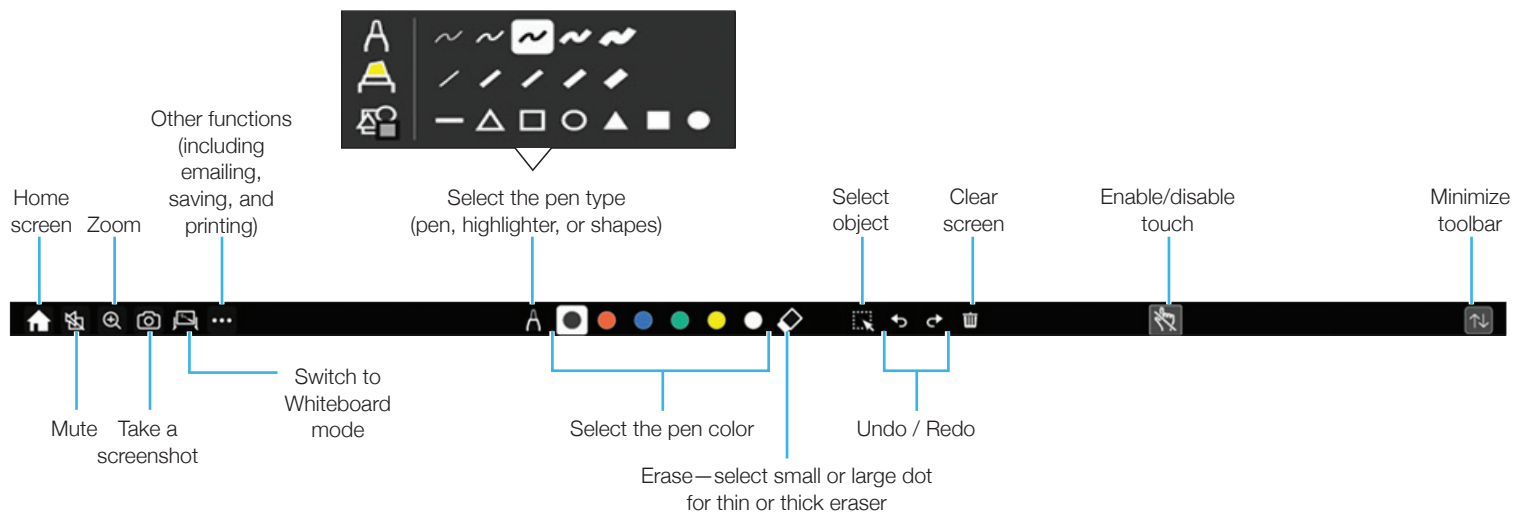
- 4 If your content is not displayed, press the **LAN** source button on the remote control.



- 5 To activate the toolbar, tap the board with an interactive pen or your finger.
- 6 Start projecting and annotating your content.



For information on connecting other devices, including Epson® document cameras, see the online BrightLink *User's Guide*.



Note: Not all toolbar icons/features available depending on connected device.

Choosing the right tool

If you already have annotation software, you can use it with your BrightLink projector. If you are using Microsoft® Office 2007 or later, you can also use the “inking tools” to add handwritten notes to your documents and PowerPoint® presentations.

Here are some tips on choosing from the tools that came with your BrightLink projector:

	Built-in Toolbar	Easy Interactive Tools
No computer?	✓	
Use pen or finger as a mouse	✓	✓
Use the board to draw on computer content	✓	✓
Draw on board using the computer		✓
Use up to two pens and six fingers simultaneously*	✓	✓
Save whiteboard pages in image, PDF, or editable format	✓	✓
Save annotations as a JPEG	✓	✓
Save annotations in image, PDF, or editable format		✓

* Depending on operating system and connection type. See the online BrightLink *User's Guide* for more information.

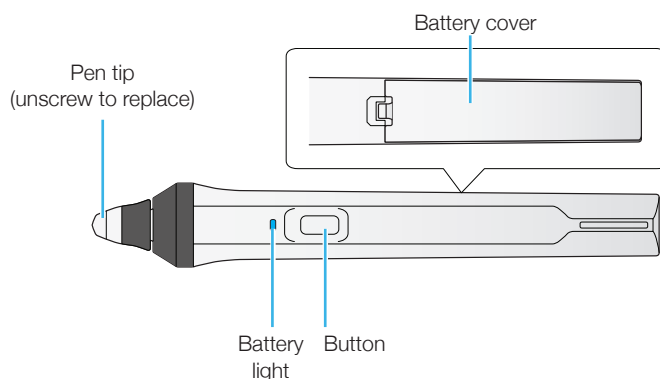
BrightLink interaction

Use the BrightLink interactive pens or your fingers to turn almost any flat wall into an interactive area.

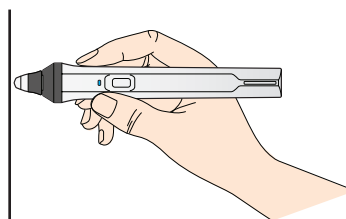
Interactive pens

Your projector came with 2 pens, one orange (Interactive Pen A) and one blue (Interactive Pen B).

Make sure one AA battery is installed in each pen.



- To turn on the pen, pick it up. To check the battery, press and hold the button. If the battery is low, the light flashes.
- Hold the pen perpendicular to the board when using it.



- When you are finished using the pen, simply place it in an area away from the projection screen.

Note: The pen turns off automatically after about 15 seconds of inactivity. Pick the pen up to turn it back on.

Finger touch

You can use your finger to perform the same functions as the interactive pens. You can use either a pen or your finger, or use both at the same time.

When performing finger touch operations, you can use up to six fingers.

Note: The number of pen and finger touch inputs depends on the interactive mode, operating system, and connection type. See the online BrightLink *User's Guide* for more information.

Need help?

Calibration

If the cursor does not match your pen or finger location, calibrate the pens and the finger touch unit. See the online *BrightLink User's Guide* for instructions.

Computer doesn't project

If the image doesn't appear after connecting a computer, try one of the following:

- On Windows 7 or later, hold down the Windows key and press **P** at the same time, then click **Duplicate**.
- On a Mac, you may need to open **System Preferences** and select **Displays**. Click the **Arrangement** tab and select the **Mirror Displays** checkbox.
- See your computer's documentation or help topics for steps to extend or project your computer screen.
- Try pressing the **Source Search** button on the remote control.
- Press the **Home** button on the remote control to verify the source input and settings.
- Make sure any video cables are securely connected.

Telephone support

The Epson® PrivateLine® service is for you! All you have to do is call (800) 637-7661. This service is available for the duration of your warranty period. You may also speak with a projector support specialist by dialing (562) 276-4394 (U.S.) or (905) 709-3839 (Canada).

Support hours are 6 AM to 8 PM, Pacific Time, Monday through Friday, and 7 AM to 4 PM, Pacific Time, Saturday. Days and hours of support are subject to change without notice. Toll or long distance charges may apply.

Online support

To access the online manuals, videos, FAQs, and more, visit www.epson.com/brightlinkdownloads (U.S.), www.epson.ca/brightlinkdownloads (Canada), or www.epson.com.jm/support (Caribbean) and select your product.

EPSON is a registered trademark, EPSON Exceed Your Vision is a registered logomark, and Epson iProjection is a trademark of Seiko Epson Corporation.

BrightLink and PrivateLine are registered trademarks of Epson America, Inc.

Windows is a registered trademark of Microsoft Corporation in the United States and/or other countries.

Mac is a trademark of Apple Inc., registered in the U.S. and other countries.

Android is a trademark of Google LLC.

General Notice: Other product names used herein are for identification purposes only and may be trademarks of their respective owners. Epson disclaims any and all rights in those marks.

This information is subject to change without notice.

© 2019 Epson America, Inc., 9/19

CPD-57746R1



413886400

EPSON
EXCEED YOUR VISION