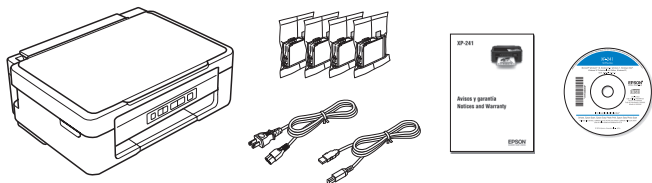


XP-241 Start Here

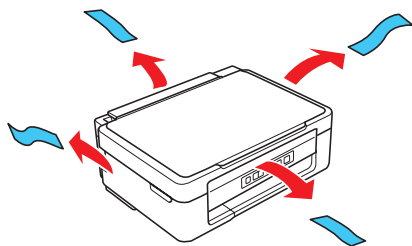
Read these instructions before using your product.

1 Unpack

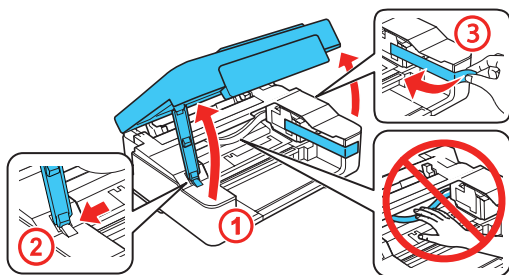


Note: Do not open ink cartridge packages until you are ready to install the ink. Cartridges are vacuum packed to maintain reliability.

- 1 Remove all protective materials from the product.

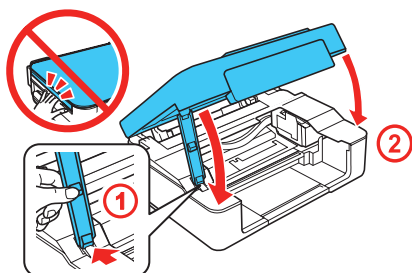


- 2 Lift up the scanner unit and remove all protective materials from inside the product.



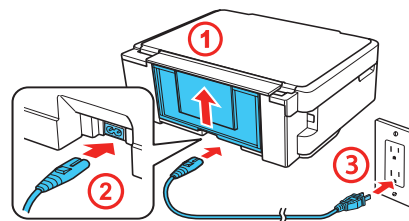
Caution: Do not touch the flat, white cable.

- 3 Lower the scanner unit.



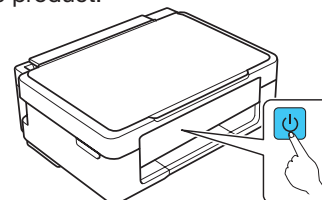
2 Turn on and configure

- 1 Connect the power cord to the back of the product and to an electrical outlet.



Caution: Do not connect to your computer yet.

- 2 Turn on the product.

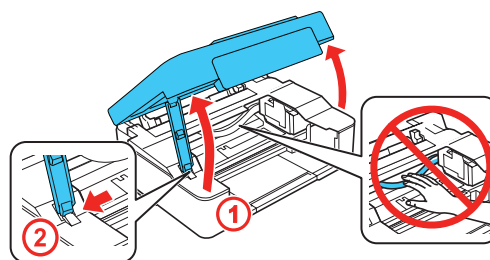


Note: If all of the printer lights are flashing, an error has occurred. Turn off the printer, lift the scanner unit and remove any protective material that has been left inside. Then turn the printer back on.

3 Install ink cartridges

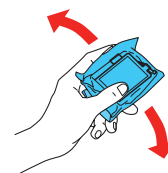
Caution: Keep ink cartridges out of the reach of children and do not drink the ink.

- 1 Lift up the scanner unit.

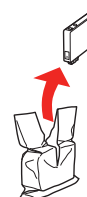


Caution: Do not touch the flat, white cable.

- 2 Gently shake the ink cartridges.



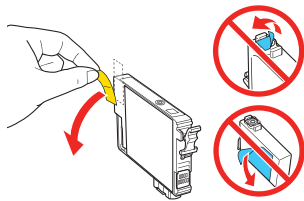
- 3 Unpack the ink cartridges.



413174400

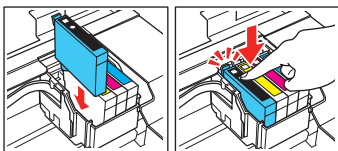
EPSON®
EXCEED YOUR VISION


- 4 Remove only the yellow tape from each ink cartridge.

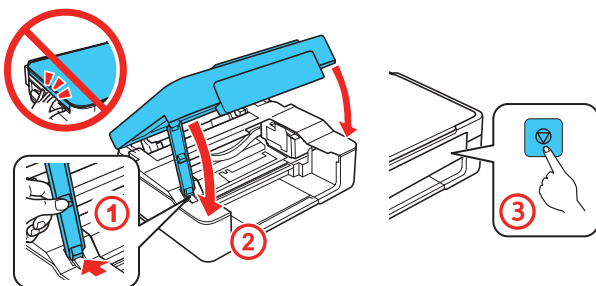


Caution: Do not remove any other labels or seals, or ink will leak. Do not touch the green chip on the cartridge.

- 5 Insert the cartridge in the holder for each color. Press each cartridge down until it clicks. Make sure all cartridges are pushed down into place.



- 6 Lower the scanner unit, then press  to start charging the ink delivery system.



- 7 The printer starts charging the ink. Ink charging takes approximately 4 minutes.

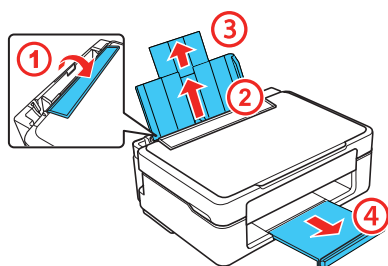
Caution: Don't turn off the printer while it is charging or you'll waste ink.

Note:

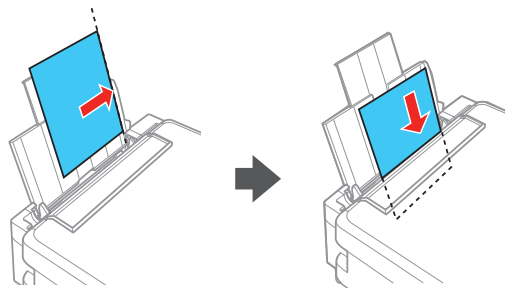
- The printer is designed for use with Epson® cartridges only, not third-party cartridges or ink.
- The cartridges included with the printer are designed for printer setup and not for resale. After some ink is used for charging, the rest is available for printing.

4 Load paper

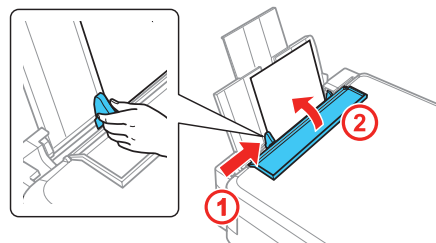
- 1 Make sure the product is done charging ink. Then flip the feeder guard forward, raise the paper support and tilt it backwards slightly, and slide out the output tray.



- 2 Load paper, glossy or printable side up and short edge first, against the right side of the rear paper feed slot.



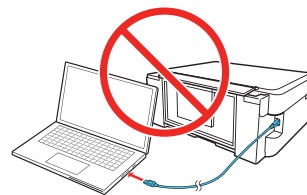
- 3 Slide the edge guide against the paper, but not too tightly, and flip the feeder guard back.



5 Install software

Note: If your computer does not have a CD/DVD drive or you are using a Mac, an Internet connection is required to obtain the product software.

- 1 Make sure the product is **NOT CONNECTED** to your computer.



Windows®: If you see a Found New Hardware screen, click **Cancel** and disconnect the USB cable.

- 2 Insert the product CD or go to your product's support page to download and run your product's software package:

www.epson.com.jm/support/xp241

- 3 Follow the instructions on the screen to run the setup program.

OS X: Make sure you install Software Updater to receive firmware and software updates for your product.

- 4 When you see the Select Your Connection screen, select one of the following, then continue with the on-screen instructions:

- **Wireless connection**

In most cases, the software installer automatically attempts to set up your wireless connection. If setup is unsuccessful, you may need to enter your network name (SSID) and password.

- **Direct USB connection**

Make sure you have the USB cable.

Mobile printing

To print from a mobile device, your product must be set up for wireless printing or Wi-Fi Direct®. See the online *User's Guide* for instructions.

Epson Connect™ Solutions

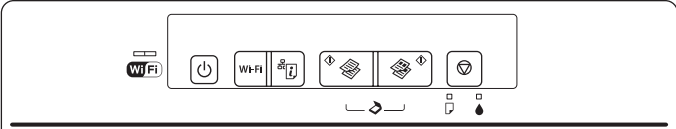
Epson Connect offers a variety of remote printing options for your product. Connect wirelessly from your tablet, smartphone, or computer. Print documents and photos from across the room or around the world.

www.epson.com.jm/connect

Epson iPrint™ for iOS/Android™

Download the Epson iPrint app from the App Store or Google Play™ to print documents and photos from your iOS or Android device on any email-enabled Epson printer.

Control panel



	Turns the printer on or off.
Wi-Fi	Clears a network error. Hold down for more than three seconds to make network settings using the WPS button on a wireless router. See the online <i>User's Guide</i> .
	Prints a network connection report to determine the causes of any network problems. To get more information, hold this button down for more than 10 seconds to print a network status sheet.
	Starts monochrome or color copy. Press both buttons simultaneously to scan your original and save it as PDF on your PC. (USB connection only)
	Stops the current operation. Press this to replace an ink cartridge when an ink cartridge is expended.
	Turns on or flashes to indicate a paper-related error.
	Turns on or flashes to indicate an ink-related error.

Any problems?

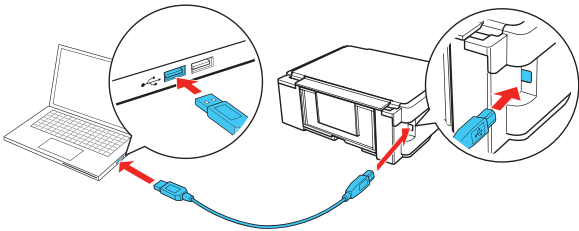
If you experience problems during setup, see below:

Network setup was unsuccessful.

- Make sure you select the right network name (SSID).
- The printer can only connect to a network that supports 2.4 GHz. If your router offers both 2.4 GHz and 5GHz connections, make sure 2.4 GHz is enabled.
- If you see a firewall alert message, click **Unblock** or **Allow** to let setup continue.

Setup is unable to find my printer after connecting it with a USB cable.

Make sure the printer is turned on and that it is securely connected as shown:



There are lines or incorrect colors in my printouts.

Run a nozzle check to see if any of the print head nozzles are clogged. Then clean the print head, if necessary. See the online *User's Guide* for more information.

Error indicators

If you see one of the error indicators below, follow the steps here to proceed:

■ On ■ Flashing slowly ■ Flashing quickly

	Paper is out or multiple pages have fed into the paper feed slot. Load paper correctly, then press or .
	Paper is jammed. Remove any jammed paper from inside the product or from the paper feed slot. Make sure your paper is loaded correctly, then press or .
	An ink cartridge is expended, not installed correctly, not recognized, or unsupported. Replace or reinstall the cartridge.
	The ink pads are near the end of their service life. Contact Epson for support. (To continue printing, press or .
	Printer error. Turn off the product and check that no protective material or other foreign object has been left inside the product.
	Wi-Fi connection error. Press the Wi-Fi button on the printer to clear the error and try again.
	An error has occurred during firmware updating. Connect your product using a USB cable and try updating the firmware again. If the error message continues, contact Epson for support.

Any questions?

User's Guide

Windows: Click the icon on your desktop or Apps screen to access the online *User's Guide*.

OS X: Click the icon in Applications/Epson Software/Guide to access the online *User's Guide*.

If you don't have a User's Guide icon, go to the Epson website, as described below.

Technical support

Visit www.epson.com.jm/support/xp241 to download drivers, view manuals, get FAQs, or contact Epson.

You can also speak to a service technician by calling one of these numbers:

Argentina	(54 11) 5167-0300 0800-288-37766	Honduras**	800-0122 Code: 8320
Bolivia*	800-100-116	Mexico	01-800-087-1080
Chile	(56 2) 2484-3400	Mexico City	(52 55) 1323-2052
Colombia	018000-915235	Nicaragua*	00-1-800-226-0368
Bogota	(57 1) 523-5000	Panama*	00-800-052-1376
Costa Rica	800-377-6627	Paraguay	009-800-521-0019
Dominican Republic*	1-888-760-0068	Peru	0800-10126
Ecuador*	1-800-000-044	Lima	(51 1) 418-0210
El Salvador*	800-6570	Uruguay	00040-5210067
Guatemala*	1-800-835-0358	Venezuela	(58 212) 240-1111

* Contact your local phone company to call this toll free number from a mobile phone.

** Dial the first 7 digits, wait for a message, then enter the code.

If your country does not appear on the list, contact your nearest Epson sales office. Toll or long distance charges may apply.

Need paper and ink?

Try Epson specialty papers with DURABrite® Ultra Ink for professional results. You can purchase them from an Epson authorized reseller. To find the nearest one, visit www.epson.com.jm or contact Epson as described in “Any questions?”



DESIGNED *for* EXCELLENCE™
Epson printers, ink and specialty papers.



XP-241 replacement ink cartridges

Color	Standard-capacity	High-capacity
Black	296	297
Cyan	296	—
Magenta	296	—
Yellow	296	—



EPSON and DURABrite are registered trademarks, Epson Connect and Epson iPrint are trademarks, and EPSON Exceed Your Vision is a registered logomark of Seiko Epson Corporation. Designed for Excellence is a trademark of Epson America, Inc.

Mac and OS X are trademarks of Apple Inc., registered in the U.S. and other countries. App Store is a service mark of Apple Inc.

Android and Google Play are trademarks of Google Inc.

Wi-Fi Direct® is a registered trademark of Wi-Fi Alliance®.

General Notice: Other product names used herein are for identification purposes only and may be trademarks of their respective owners. Epson disclaims any and all rights in those marks.

This information is subject to change without notice.

© 2016 Epson America, Inc., 4/16

Printed in XXXXXX

CPD-51352