

Your desktop:
just got bigger.

WYSE
| | | |



Wyse C class™ Small size, big performance.

All you need to know. Here



Introducing the Wyse C class clients

Meet the Wyse C class. Combining small size and excellent performance, it sets a new benchmark in thin computing.

Three models are available featuring Windows CE, Windows XP Embedded and Windows Embedded Standard operating systems - and a zero client model for Wyse WSM provisioning:



Wyse C00LE™

Zero client with no local operating system. Used with Wyse WSM provisioning software for a PC experience on a thin desktop.



Wyse C30LE™

Windows CE 6 - Microsoft's componentized real-time operating system for small footprint devices.



Wyse C90LE™

Windows XP Embedded - runs thousands of existing Windows applications and drivers.



Wyse C90LEW™

Take advantage of the power of Microsoft Windows Embedded Standard.



Start

Models

Features

Technical

Print

WYSE
I I I I

Features Wyse C class clients

Compact. Clever. Capable.

Creating highly productive, fully functional and compact virtual desktops has never been easier. Each Wyse C class features full support for the Wyse TCX™ range of user enhancements - that includes multiple display support, multimedia playback, rich audio and USB peripheral connectivity - and Wyse WSM™ zero client provisioning software delivering a PC experience on a thin or 'zero client'.

Cool performance. Cooler workspaces.

Designing these levels of high processing and graphics performance into such a compact space hasn't been at the expense of energy consumption and heat emissions either. Each Wyse C class draws under 7 watts of power - creating cooler working environments - in every respect.

Take a tour of the Wyse C class range features here



Visit: wyse.com

Learn more:

Simply click the Wyse C class feature icons opposite:

Performance



Wyse C class Connectivity



Mounting Options



Green



Provisioning Software



Management Software



Virtualization Software



Virtualization Software



Microsoft Windows CE



Microsoft Windows XP Embedded



Microsoft Windows Embedded



Start

Models

Features

Technical

Print

WYSE
| | | |

Performance

High performance. Inside out.

Inside every compact, Wyse C class lies a punchy VIA C7 1 GHz processor and an advanced hardware graphics accelerator delivering rich multimedia and video playback up to 1080p HD resolution.

Outside, you'll find advanced DVI-I display connectivity for one or two displays, four free USB 2.0 ports, PS/2 ports for keyboard and mouse, gigabit Ethernet and optional WiFi (b/g/n) support. Wyse C class supports the Wyse TCX software suite of user-experience enhancements and Wyse WSM zero-client provisioning software.

VIA C7 1 GHz processor
plus advanced best performance per watt
hardware graphics accelerator



Continue tour



Start

Models

Features

Technical

Print

WYSE
I I I I

Wyse C class family connectivity

Wyse C00LE, C30LE, C90LE and C90LEW clients



Well connected

DVI-I Video output

Two PS/2 ports

Optional wireless

Kensington lock slot

10/100/1000 Base-T ethernet port

Four external USB 2.0 ports
(2 front; 2 back)

Audio out: 1/8-inch mini jack, 16 bit stereo

Audio in: 1/8-inch mini jack,
8 bit stereo microphone



Continue tour



Start

Models

Features

Technical

Print

WYSE
I I I I

Mounting options

Desktop

- Wyse C class clients feature sturdy feet for simple horizontal desktop installation.



Fits around you.

On the desk or out of sight; Wyse C class fits around you. Every Wyse C class includes a monorail mount that lets you choose how and where to fit it: horizontally, vertically, directly to walls, under desks ...and even fitted discretely to the rear of standard desktop displays.



Back of monitor or wall mounting

- An optional VESA mount bracket enables Wyse C class to be mounted on the back of a monitor (this requires the four industry standard mounting points to be free). The same bracket can be used for wall mounting.

Continue tour



Start

Models

Features

Technical

Print

WYSE
I T I

Desktop computing Without compromise

That's Wyse EarthSmart Computing



EarthSmart Computing™



Going Green with Wyse thin computing

Through our EarthSmart Computing initiative we are committed to helping organizations implement a greener computing strategy - one that delivers a more efficient and productive computing experience for your users with a positive effect on energy wastage, heat and carbon emissions.

Green Power

Each fanless Wyse C class draws just under 7 watts* of power and creates very little heat as a result - contributing to cooler, quieter user work environments, a greatly reduced carbon footprint and huge savings in energy costs when compared to equivalent PC desktops.

*Average power usage with device connected to 1 keyboard, 1 PS/2 mouse, and 1 monitor.

Continue tour



Start

Models

Features

Technical

Print

WYSE
I I I I

Provisioning Software

Wyse WSM

Wyse WSM Delivers full PC functionality with all the benefits of centralized management and maintenance-free 'Zero Clients'.

Wyse WSM provisions the operating system and applications on-demand to desktop devices across your network. Even traditional management tasks such as firmware upgrades, patching or installing new software applications are carried out one-time only centrally on the server, avoiding the need to visit individual desktops. Dramatically speeding-up and simplifying deployment in one stroke.

The power of a PC, without the complexity.

Wyse Zero Clients and Wyse WSM provide compact, energy efficient and productive desktops with all the dynamic user experience of a PC without the day-to-day complexities and risks associated with one.

Plus, as all Wyse Zero Clients have no moving parts to fail, their service lives (typically 5-10 years) are extended beyond those of comparable PCs, and the noise from fans and hard drives is eliminated. Better still, their low power consumption means low heat output enabling comfortable working environments with a reduced dependence on costly carbon-heavy air conditioning - often leaving workplace cooling achievable through natural ventilation.



Continue tour



Start

Models

Features

Technical

Print

WYSE
I I I I

Management Software

Wyse Device Manager

Thin computing remote management. Made easy.

Wyse Device Manager (WDM) provides comprehensive, enterprise-wide management for Wyse C class thin clients. A licence for WDM Workgroup Edition is included with every Wyse C class thin computer. This may be upgraded to WDM Enterprise Edition for an additional charge. **Key features include:**

Security

- HTTPS Based Imaging / Updates
- Fully Encrypted Network Traffic
- Multi-user Admin Access (MS AD) Support

No-Hassle Deployment

- Complete Device Imaging / Patching / Updates
- Bandwidth Throttling for Efficiency / Reliability
- Software Updates and Add-ons

Device Administration and Monitoring

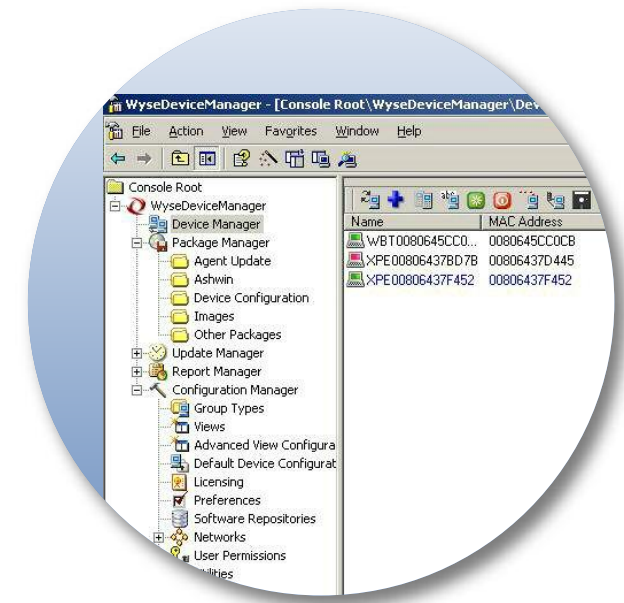
- Device Health Status / Reporting
- Remote Shadowing / Control
- Default Device Configuration

Scalability

- Distributed Architecture
- SQL / MSDE Support
- Multiple Remote Repository Support

Complete Asset Visibility

- Automated Discovery
- Detailed Hardware Asset information
- Installed Software Asset information.



Continue tour



Start

Models

Features

Technical

Print

WYSE
I I I I

Virtualization Software

Wyse TCX™ Software Suite with Collaborative Processing Architecture™

Wyse TCX Software Suite delivers an amazing user experience.

Wyse TCX is our new software suite which enriches the user experience by removing the limitations previously associated with thin clients. With Wyse TCX users receive the best PC experience available on a thin computing platform. Wyse TCX software is sold separately.



Wyse TCX Multi-display

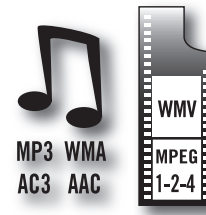
Ensures application windows and dialog boxes are multi-monitor aware when using more than one monitor.



Wyse TCX USB Virtualizer

Enables plug and play peripheral support for virtual desktop environments.

- Redirect and use local USB devices in virtual desktops.
- Deploy virtual desktops to knowledge workers with special device access needs.
- Enable a broad set of USB peripherals including webcams and headsets.



Wyse TCX Multimedia

Streamlines the delivery of the multimedia stream to the local client for a rich user experience within a thin computing architecture.

- Accelerates Mpeg1, Mpeg2, WMV, Mpeg4 Part 2, AC3, AAC, MP3, WAV, WMA media types.
- Collaborative Processing Architecture enhances server scalability by off-loading multimedia rendering to the client.
- Flash Video Acceleration - Coming Fall 2009.



Wyse TCX Rich Sound

Enables bi-directional audio in virtual desktop environments, enabling solutions such as VOIP, digital dictation or voice recognition to be deployed.

[Continue tour](#)



Start

Models

Features

Technical

Print

WYSE
I I I I

Virtualization Software

Wyse Virtual Desktop Accelerator

Removing the barriers of network latency

Wyse Virtual Desktop Accelerator (VDA) enables virtualized desktop and thin computing environments to be deployed to areas where network latency has, to date, presented operational barriers. Now, with Wyse VDA, more users can receive the full benefits of Wyse thin computing – with the best PC experience over virtualized desktops.

Wyse VDA is a software-only solution for Wyse thin clients and supported PCs that delivers the best user experience for the allocated network bandwidth by neutralizing the effects of network latency and packet loss. Making 'thin' suitable for more remote-site, branch, or field-based users.

Wyse VDA works with instead of replacing existing RDP and ICA protocols, accelerating them by up to 3 times on networks faced with latencies up to and beyond 300ms, and at least 768kbps bandwidth.



At a glance features:

- Software-only acceleration of virtual desktops and applications
- Accelerates existing Citrix ICA and Microsoft RDP protocols
- Works on WANs and 'fat, long pipes'
- Accelerates connections to Citrix XenApp, Citrix XenDesktop, VMware View and Microsoft Terminal Server and Microsoft Hyper-V VDI
- Enhances Wyse TCX software suite functionality across wide-area networks
- Enables Wyse Collaborative Processing Architecture across wide-area networks
- Administrator console provides control of maximum bandwidth per connection
- Leverages built-in security of underlying protocols (128-bit encryption for RDP and ICA).

Continue tour



Start

Models

Features

Technical

Print

WYSE
I T I

Operating Systems

Microsoft Windows CE

Wyse-enhanced Microsoft Windows CE is ideal for departments and organizations that need support for Citrix ICA, Microsoft RDP and VM view as well as a local browser and terminal emulation, plus standard connections to peripherals and add-ons.

Microsoft Windows CE gives you a PC-like experience on the desktop, with local terminal emulation so you can run most legacy applications. By combining this small and fast operating system with firmware components, Wyse is able to reduce boot times and increase protection against viruses, trojan horses, and other malware.

The result is a simply more secure solution that provides the flexibility to add standard peripherals, from printers to scanners to USB thumb drives. However these peripherals can

only be connected under access controlled by the IT administrator.



Continue tour



Start

Models

Features

Technical

Print

WYSE
I T I

Operating Systems

Microsoft Windows XP Embedded

Running Microsoft Windows XP Embedded on Wyse thin computers gives IT departments the ability to support Citrix ICA, Microsoft RDP and VMware View environments and deploy fully functional desktop computers with better manageability and significantly lower total cost of ownership than personal computers.

Wyse Microsoft Windows XP Embedded-based thin computers can run 32 bit Microsoft Windows applications, either locally or from servers located on the network, with inbuilt flexibility to add and support a host of desktop peripherals with permission from the IT administrator.



Secure write-protected thin desktops

This robust and flexible operating system is further enhanced by the Wyse file-based

Write Filter that enables you to protect the file system image from accidental changes or user customization. On rebooting, the thin client simply returns to the required file system image state.

Wyse customized image support

Wyse technicians are able to help you customize Windows XP Embedded to your exact requirements and create bespoke system images for subsequent enterprise-wide deployment, management and update through Wyse Device Manager.

Contact your Wyse Partner for further details.



Continue tour



Start

Models

Features

Technical

Print

WYSE
I T I

Operating Systems

Microsoft Windows Embedded Standard

Running Windows Embedded Standard (WES), the latest and most advanced embedded OS from Microsoft, on Wyse thin computers gives IT departments the ability to deploy fully functional desktop computers with better manageability and significantly lower total cost of ownership than personal computers.



Wyse WES-based thin computers can run 32 bit Microsoft Windows applications, either locally or from servers, with the inbuilt flexibility to add and support a host of desktop peripherals with permission from the IT administrator.

Secure write-protected thin desktops

This robust and flexible operating system is further enhanced by the Wyse file-based Write Filter that enables you to protect the files, folder and/or entire volumes from accidental changes or user customization. On rebooting, the thin client simply returns to its original state thus preventing any possible damaging modification either from users or malware.

Wyse customized image support

Wyse technicians are prepared to help you customize Windows Embedded Standard to your exact requirements in order to create custom-built images for subsequent enterprise-wide deployment, management and update through Wyse Device Manager.

Contact your Wyse Partner for further details.



Take the Tour again



Start

Models

Features

Technical

Print

WYSE
I I I I

Contact Wyse

Wyse Technology Inc.

3471 North First Street, San Jose, CA 95134-1801

Visit our website at:

<http://www.wyse.com> or send an email to: sales@wyse.com

Wyse Sales

800 GET WYSE (800 438 9973)

Wyse Customer Service Center:

800 800 WYSE (800 800 9973)

Wyse offers thin computing sales, service and support expertise around the globe.

[Click here for contact details of your regional Wyse office.](#)

©2009 The Wyse logo and Wyse are trademarks of Wyse Technology Inc. Other product names mentioned herein are for identification purposes only and may be trademarks and/or registered trademarks of their respective companies. All specifications are subject to change without notice. Whilst we make every effort to ensure the accuracy of the details, specifications, models, images and benefits featured in this datasheet, we cannot be held responsible for any errors and/or omissions. If you have any queries regarding Wyse products please contact your authorized regional Wyse Partner or representative for further information and assistance. Some features require support by server operating system and protocol. Approved final 131009.



Start

Models

Features

Technical

Print

WYSE
I I I I

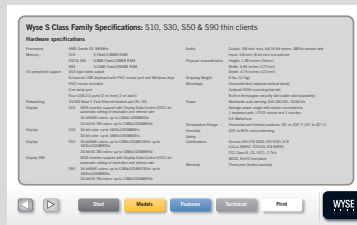
Technical Wyse C class Specifications

Wyse C class thin computers are available across a variety of operating systems featuring the provisioning power of Wyse WSM, the functionality of Microsoft Windows CE, the versatility of Microsoft Windows XPe and the advanced capabilities of Microsoft Windows Embedded Standard.

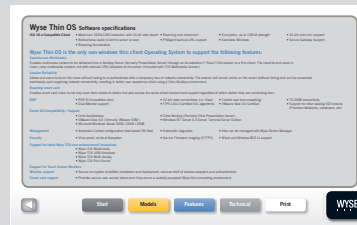
[Learn more](#)

Simply click the data sheets below:

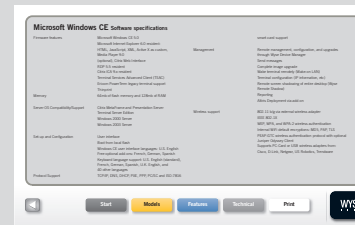
Wyse C00LE, C30LE, C90LE and C90LEW Thin Clients



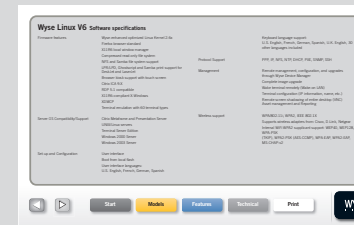
Wyse WSM



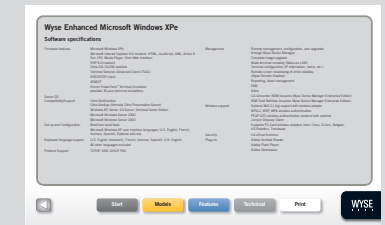
Microsoft Windows CE



Microsoft Windows XPe



Microsoft Windows Embedded Standard



Visit: wyse.com



Start

Models

Features

Technical

Print

WYSE
| | | |

Wyse C class family Hardware Specifications

Processors	VIA C7 1GHz		
Chipset	VIA VX855		
Memory	C class with Windows CE (C30LE): 128MB Flash / 512MB RAM DDR2 C class with Windows XPe (C90LE): 1GB Flash / 1GB RAM DDR2 C class for Wyse WSM (C00LE): 0GB Flash / 1GB RAM DDR2 C class with Windows Embedded Standard (WES) (C90LEW): 2GB Flash / 1GB RAM DDR2		
Maximum memory Configuration	Flash up to 2GB / RAM up to 2GB		
I/O peripheral support	One DVI-I port, DVI to VGA (DB-15) adapter included Dual-video Support with optional DVI-I to DVI-D plus VGA-monitor splitter cable (sold separately) Four USB 2.0 ports (2 on front, 2 on back) Two PS/2 ports One Mic In One Line Out Enhanced PS/2 Keyboard with Windows Keys (104 keys) and PS/2 Optical mouse included		
Networking	10/100/1000 Base-T Gigabit Ethernet Cisco CCX Certified internal 802.11 b/g/n (optional) eliminates theft of external wireless adapters		
Display	VESA monitor support with Display Data Control (DDC) for automatic setting of resolution and refresh rate Dual monitor supported Single: 1920x1200@60Hz, Color depth: 8, 15, 16, 24 or 32bpp,		
		Audio	Two independent full resolution frame buffers Dual: 1920x1200@60Hz, Color Depth: 8, 15, 16, 24 or 32bpp. Output: 1/8-inch mini jack, full 16 bit stereo Input: 1/8-inch mini jack, 8 bit microphone
		Physical characteristics	Height: 1.38 inches (34mm) Width: 6.94 inches (177mm) Depth: 4.75 inches (121mm)
		Shipping Weight	6 lbs. (2.7kg)
		Mountings	Horizontal feet Optional VESA mounting bracket
		Device Security	Built-in Kensington security slot (cable sold separately)
		Power	Worldwide auto-sensing 100-240 VAC, 50/60 Hz. Energy Star® V.5.0 compliant power supply Average power usage with device connected to 1 keyboard with 1 PS/2 mouse and 1 monitor: Under 7 Watts
		Temperature Range	Horizontal: 10-35 C (50-95 F), Vertical: 10-40 C (50- 104 F)
		Humidity	20% to 80% condensing 10% to 95% non-condensing
		Certifications	German EKI-ITB 2000, ISO 9241-3/-8 cULus 60950, TÜV-GS, EN 60950 FCC Class B, CE, VCCI, C-Tick WEEE, RoHS Compliant Energy Star® Compliant
		Warranty	Three-year hardware warranty. Visit our web site for WyseChoice extensions and upgrades



Start

Models

Features

Technical

Print

WYSE
I I I I

Wyse WSM Software Specifications

Device Hardware Requirements	<ul style="list-style-type: none">• Minimum processor speed 800MHz (1GHz or higher is recommended).• Minimum 1GB or higher is recommended	<ul style="list-style-type: none">• Flash size/local storage – none needed. If the device has flash it can be used as a local cache for offline mode.
Server Requirements	<ul style="list-style-type: none">• Minimum processor speed 1GHz (3GHz or higher is recommended).	<ul style="list-style-type: none">• Server Operating System: Windows XP Pro SP3, Windows Server 2003, Windows Server 2008
Network Requirements	<ul style="list-style-type: none">• Server Lan Speed = Minimum 100Mbps (1Gbps and up is recommended).• Device Lan Speed = Minimum 10Mbps (100 Mbps full duplex is recommended)	
Operating Systems Supported	<ul style="list-style-type: none">• Microsoft Windows XP• Microsoft Windows Vista.	
Databases supported	<ul style="list-style-type: none">• Microsoft SQL 2005 and 2008 (Server and Express Editions).	
Built-in high Availability	<ul style="list-style-type: none">• Database availability using SQL clustering.• Built-in server high availability through WSM Server Grouping feature.	
Fast and Easy Installation	<ul style="list-style-type: none">• Installing Wyse WSM is simply a matter of running a single, graphical installer.	<ul style="list-style-type: none">• The installer checks for all the prerequisite components before installation.
Web-based Admin Console	<ul style="list-style-type: none">• Allows IT administrators to access Wyse WSM from any browser.• Control the entire installation from a central location.	<ul style="list-style-type: none">• Dramatically simplifies administration, saving IT time and user downtime.• Wizards to guide the user through specific tasks.
Operation System and Application Imaging Tools	<ul style="list-style-type: none">• Imaging tool simplifies the process of creating an OS image for the specific hardware configuration and an application image for all hardware configurations.	<ul style="list-style-type: none">• All OS and application images are ready for deployment once created, no further modifications needed.
Application Subscription Management	<ul style="list-style-type: none">• Use flexible application deployment methods:<ul style="list-style-type: none">- Auto-subscribed applications are ready for use when user logs in for the first time.- Manual subscriptions allow users the flexibility to use applications only when needed.- Mandatory subscriptions that cannot be unsubscribed by users.	
Protected System Drive	<ul style="list-style-type: none">• Allows administrators to protect the system drive from enduser initiated updates.	<ul style="list-style-type: none">• Prevents changes to operating system drive except by administrators, helping stop viruses, spyware, or malware from infecting the device.



Start

Models

Features

Technical

Print

WYSE
| | | |

Wyse WSM Software Specifications - continued

Operating System Streaming

- Wyse WSM provides an on-demand operating system to thin-computers on the network.
- Only those bits needed for the normal device operation are sent in order to reduce network traffic.
- Innovative technology makes each thin computer think there is a virtual hard disk attached to the device.
- Operating-system images can be shared across multiple devices, making management easier.

Flexible Boot Options

- Each device can boot from four operating system image assignments.
- Administrators can assign or let users choose which operating system they want to boot.
- First disk mode for the default OS image to boot from every time device starts up.
- First available mode to boot from the first responding server in order to balance loads.

Application License Management and Metering

- Wyse WSM provides the infrastructure to collect information about the application license-usage across the enterprise. This information allows IT organizations to save money associated with application licenses.
- Licenses can be stored for all the applications deployed. It also enforces license compliance.
- Types of licenses that can be controlled include: - Time-based licenses (valid for X days). - Number of concurrent users.

Modes of Operation

- Wyse WSM allows administrators to choose modes of operation for the operating system:
- **Private Mode** – for administration of operating system images.
 - **Shared Mode** – has two additional modes of normal operation:
 - *Volatile* – returns desktop to pristine state after a device reboot.
 - *Persistent* – remembers any user settings after a device reboot.

Remote Servers for Scalability

- IT administrators can deploy multiple remote servers to improve scalability of the overall solution.
- Central management of remote servers allows easy deployment of the solution across different geographic locations.

Comprehensive Reporting

- Easy ad-hoc reporting based on flexible parameters.
- Reports are delivered through HTML, giving you the flexibility to output in any form.
- License-metering reports can be used to make proactive purchasing decisions.
- License-audit reports can be used for compliance purposes.

Desktop Compatibility

- Wyse WSM works with Wyse COOLE, VOOL / LE and ROOL / LE families of thin computers as well as with existing thin computers, personal computers, and virtual-desktop systems.



Start

Models

Features

Technical

Print

WYSE
| | | |

Microsoft Windows CE 6.0 WFR2 Software Specifications

Firmware features

Microsoft Windows CE 6.0 WFR2
Microsoft Internet Explorer 6.0 resident:
HTML, JavaScript, XML, Active X as custom,
Media Player 9.0
Citrix Web Interface
RDP 6.0 resident
Citrix ICA 11.x resident
VMware View Client Resident
Terminal Services Advanced Client (TSAC)
Ericom PowerTerm[®] Terminal Emulation
provides 30-plus terminal emulations
Thinprint (RDP/ICA)

Protocol Support

French, German, Spanish, U.K. English, and
40 other languages
TCP/IP, DNS, DHCP, PXE, PPP, PC/SC and ISO-7816
smart-card support

Management

Remote management, configuration and upgrades
through Wyse Device Manager
Send messages
Complete image upgrade
Wake terminal remotely (Wake-on LAN)
Terminal configuration (IP information, etc)
Remote screen shadowing of entire desktop
(Wyse Remote Shadow)
Reporting
Altiris Deployment via add-on

Memory

128MB of flash memory and 512MB of RAM

Server OS Infrastructure Support

Citrix XenApp / Citrix Presentation Server
Citrix XenDesktop
VMware View
Microsoft Windows Terminal Server 2003 / 2008

Wireless support

802.11 b/g/n support with internal wireless adapter
IEEE 802.1X
WEP, WPA, and WPA-2 wireless authentication
Internal WiFi default encryptions: MD5, PAP, TLS
Supports USB wireless adapters from:
Cisco, D-Link, Netgear, US Robotics, Trendware

Set-up and Configuration

User interface
Boot from local flash
Microsoft Windows CE 6.0 WFR2 user interface languages:
U.S. English
Free optional add-ons: French, German, Spanish
Keyboard language support: U.S. English (standard),



Start

Models

Features

Technical

Print

WYSE
| | | |

Microsoft Windows XP Embedded SP3 Software Specifications

Firmware features

Microsoft Windows XP Embedded SP3
Microsoft Internet Explorer 7.0 resident: HTML, JavaScript, XML,
Active X Sun JRE, Media Player, Citrix Web Interface
RDP 6.0.xx resident
Citrix ICA 11 resident
VMware View Client Resident
Terminal Services Advanced Client (TSAC)
Ericom PowerTerm[®] Terminal Emulation
provides 30-plus terminal emulations

Memory

1GB of flash memory and 1GB of RAM

Server OS Infrastructure Support

Citrix XenApp / Citrix Presentation Server
Citrix XenDesktop

VMware View
Microsoft Windows Terminal Server 2003 & 2008

Set-up and Configuration

Boot from local flash
Microsoft Windows XP user interface languages: U.S. English,
French, German, Spanish, Optional add-ons

Keyboard language support

U.S. English (standard), French, German, Spanish, U.K. English,
40 other languages included

Protocol Support

TCP/IP, DNS, DHCP, PXE

Management

Remote management, configuration, and upgrades
through Wyse Device Manager
Complete image upgrade
Wake terminal remotely (Wake-on LAN)
Terminal configuration (IP information, name, etc.)
Remote screen shadowing of entire desktop
(Wyse Remote Shadow)
Reporting, Asset management
SMS
Altiris
CA Unicenter NSM (requires Wyse Device Manager
Enterprise Edition)
IBM Tivoli NetView (requires Wyse Device Manager
Enterprise Edition)

Wireless support

802.11 b/g/n support with internal wireless adapter
WPA-2, WEP, WPA wireless authentication
Supports wireless adapters from: Cisco, D-Link, Netgear,
US Robotics, Trendware

Plug-ins

Adobe Flash Player
Adobe Shockwave



Start

Models

Features

Technical

Print

WYSE
I I I I

Microsoft Windows Embedded Standard Software Specifications

Firmware features

Microsoft Windows Embedded Standard (WES)
Microsoft Internet Explorer 7.0 resident: HTML, JavaScript, XML,
Active X Sun JRE, Media Player, Citrix Web Interface
RDP 6.1 resident
Citrix ICA 10 resident
Ericom PowerTerm® Terminal Emulation
provides 30-plus terminal emulations
Citrix XenDesktop
Windows Media Player 11

Server OS Infrastructure Support

Citrix XenApp / Citrix Presentation Server
Citrix XenDesktop
VMware View
Microsoft Windows Terminal Server 2003 & 2008

Application Framework

.Net 3.5

Security

File Based Write Filter (FBWF)
Microsoft Baseline Security Analyzer (MBSA)

Set-up and Configuration

Boot from local flash
Microsoft Windows WES user interface languages: U.S. English,
French, German, Spanish, Optional add-ons

Keyboard language support

U.S. English (standard), French, German, Spanish, U.K. English,
40 other languages included

Protocol Support

TCP/IP, DNS, DHCP, PXE

Management

Remote management, configuration, and upgrades
through Wyse Device Manager
Complete image upgrade
Wake terminal remotely (Wake-on LAN)
Terminal configuration (IP information, name, etc.)
Remote screen shadowing of entire desktop
(Wyse Remote Shadow)
Reporting, Asset management
SMS
Altiris
CA Unicenter NSM (requires Wyse Device Manager
Enterprise Edition)
IBM Tivoli NetView (requires Wyse Device Manager
Enterprise Edition)

Wireless support

802.11 b/g/n support with external wireless adapter or
internal wireless adapter option
WPA-2, WEP, WPA wireless authentication
PEAP-GTC wireless authentication protocol with optional
Juniper Odyssey Client
Supports PC-Card wireless adapters from: Cisco, D-Link, Netgear,
US Robotics, Trendware

Plug-ins

Adobe Flash Player
Adobe Shockwave
Microsoft Silverlight



Start

Models

Features

Technical

Print

WYSE
I I I I

Wyse C class™ clients

WYSE
| . | . | .

Small size **big performance**

Summary Data



Wyse C class clients

High performance. Inside out.

Inside every compact, Wyse C class lies a punchy VIA C7 1 GHz processor and an advanced hardware graphics accelerator delivering rich multimedia and video playback up to 1080p HD resolution.

Outside, you'll find advanced DVI-I display connectivity for one or two displays, four free USB 2.0 ports, PS/2 ports for keyboard and mouse, gigabit Ethernet and optional WiFi (b/g/n) support.

Fits round you.

On the desk or out of sight; Wyse C class fits around you. Every Wyse C class includes a monorail mount that lets you choose how and where to fit it: horizontally, vertically, directly to walls, under desks ...and even fitted discretely to the rear of standard desktop displays.

Compact. Clever. Capable.

Creating highly productive, fully functional and compact virtual desktops has never been easier. Each Wyse C class features full support for the Wyse TCX™ range of user enhancements - that includes multiple display support, multimedia playback, rich audio and USB peripheral connectivity - and Wyse WSM™ zero client provisioning software delivering a PC experience on a thin or 'zero client'.

Cool performance. Cooler workspaces.

Designing these levels of high processing and graphics performance into such a compact space hasn't been at the expense of energy consumption and heat emissions either. Each Wyse C class draws under 7 watts of power - creating cooler working environments - in every respect.

Choice of operating systems.

Three models are available featuring Windows CE, Windows XP Embedded & Windows Embedded Standard operating systems - and a zero client model for Wyse WSM provisioning software.

Features

Performance

VIA C7 1 GHz processor and advanced hardware graphics accelerator for rich multimedia and video playback up to 1080p HD resolution.

Connectivity

Advanced DVI-I display connectivity for one or two displays, four free USB 2.0 ports, PS/2 ports for keyboard and mouse, gigabit Ethernet and optional WiFi (b/g/n) support.

Mounting options

Horizontal standing desktop feet. Can be mounted to walls and backs of monitors.

Green

Draws under 7 watts of power when connected to one keyboard, PS/2 mouse and monitor.

Management

Features Wyse Device Manager software (workgroup edition).

Virtualization

Delivers the best user experience through full support for Wyse TCX virtualized desktop enhancement software and Wyse VDA - acceleration software that reduces the effects of network latency.

Wyse WSM provisioning software

Provides compact, energy efficient and productive 'Zero Clients' with all the dynamic user experience of PCs - without their risks and complexities..

Microsoft CE 6

Componentized real-time operating system for small footprint devices.

Microsoft Windows XP Embedded

Windows XP Embedded - runs thousands of existing Windows applications and drivers on thin clients.

Microsoft Windows Embedded Standard

Take advantage of the power of Microsoft Windows Embedded Standard.

Wyse C class clients Hardware specifications

Processors	VIA C7 1GHz
Chipset	VIA VX855
Memory	C class with Windows CE (C30LE): 128MB Flash / 512MB RAM DDR2 C class with Windows XP Embedded (C90LE): 1GB Flash / 1GB RAM DDR2 C class for Wyse WSM (C00LE): 0GB Flash / 1GB RAM DDR2 C class with Windows Embedded Standard (WES) (C90LEW): 2GB Flash / 1GB RAM DDR2
Maximum memory Configuration	Flash up to 2GB / RAM up to 2GB
I/O peripheral support	One DVI-I port, DVI to VGA (DB-15) adapter included Dual-video Support with optional DVI-I to DVI-D plus VGA-monitor splitter cable (sold separately) Four USB 2.0 ports (2 on front, 2 on back) Two PS/2 ports One Mic In One Line Out Enhanced PS/2 Keyboard with Windows Keys (104 keys) and PS/2 Optical mouse included
Networking	10/100/1000 Base-T Gigabit Ethernet Cisco CCX Certified internal 802.11 b/g/n (optional) eliminates theft of external wireless adapters
Display	VESA monitor support with Display Data Control (DDC) for automatic setting of resolution and refresh rate Dual monitor supported Single: 1920x1200@60Hz, Color depth: 8, 15, 16, 24 or 32bpp, Two independent full resolution frame buffers Dual: 1920x1200@60Hz, Color Depth: 8, 15, 16, 24 or 32bpp.
Audio	Output: 1/8-inch mini jack, full 16 bit stereo Input: 1/8-inch mini jack, 8 bit microphone
Physical characteristics	Height: 1.38 inches (34mm) Width: 6.94 inches (177mm) Depth: 4.75 inches (121mm)
Shipping Weight	6 lbs. (2.7kg)
Mountings	Horizontal feet Optional VESA mounting bracket
Device Security	Built-in Kensington security slot (cable sold separately)
Power	Worldwide auto-sensing 100-240 VAC, 50/60 Hz. Energy Star® V.5.0 compliant power supply Average power usage with device connected to 1 keyboard with 1 PS/2 mouse and 1 monitor: Under 7 Watts
Temperature Range	Horizontal: 10-35 C (50-95 F), Vertical: 10-40 C (50- 104 F)
Humidity	20% to 80% condensing 10% to 95% non-condensing
Certifications	German EKI-ITB 2000, ISO 9241-3/-8 cULus 60950, TÜV-GS, EN 60950 FCC Class B, CE, VCCI, C-Tick WEEE, RoHS Compliant Energy Star® Compliant
Warranty	Three-year hardware warranty. Visit our web site for WyseChoice extensions and upgrades

Wyse Technology Inc.
3471 North First Street
San Jose, CA 95134-1801

Visit our website at:
<http://www.wyse.com>
Or send email to:
sales@wyse.com

Wyse Sales
800 GET WYSE
(800 438 9973)

Wyse Customer Service Center:
800 800 WYSE
(800 800 9973)

WYSE
| | | |