



***DCS-5010L***



**Pan & Tilt Day/Night Network Camera**  
**Cloud Camera**

**Quick Install Guide**

**D-Link®**

# Package Contents



DCS-5010L Pan & Tilt Day/Night Network Camera



Mounting Bracket



Power Adapter



Ethernet Cable



Quick Install Guide

If any of the above items are missing, please contact your reseller.

## Minimum Requirements

### Computer with:

- PC with 1.3GHz or above and at least 128MB RAM
- Windows® 8, 7, Vista® or XP (32-bit or 64-bit)
- Mac OS® X 10.6 or higher

### Web Browser

- Internet Explorer® 7, Firefox, Safari 4, or Chrome
- Installed and enabled Java and ActiveX® controls

### Network Device and Service

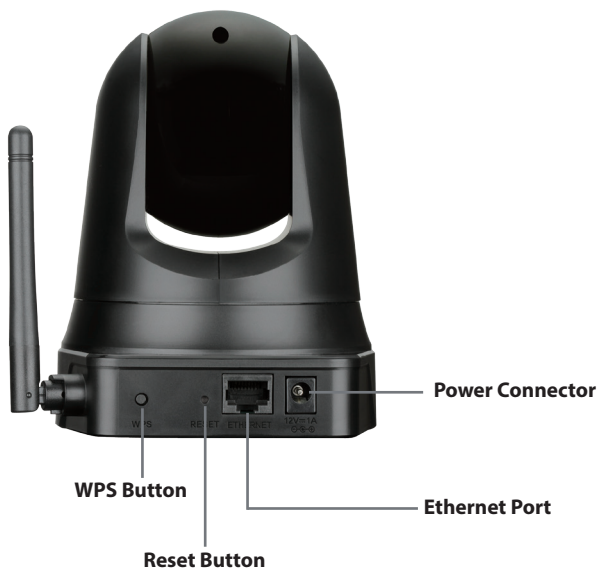
- A router (D-Link Cloud Router is recommended)
- An Internet connection
- An e-mail account (required to create a mydlink account)

# Product Overview

## Front



## Back

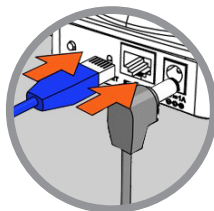


# Zero Configuration Setup

If you have a D-Link Cloud Router with an Internet connection, you can take advantage of Zero Configuration. This feature automatically configures your camera's settings for you and adds it to your mydlink account automatically. If you do not have a D-Link Cloud router, refer to the next page to install and configure your camera.

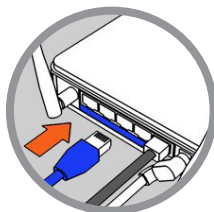
1

Connect the Ethernet cable and power adapter to the camera.



2

Connect the other end of the Ethernet cable to your D-Link Cloud Router and connect the camera's power adapter to a power outlet.



3

From any computer, open a web browser, go to <http://www.mydlink.com> and log into your account.

Click on the device name when the notice appears to add the camera to your account.



If you wish to connect your camera to your router wirelessly, you can simply disconnect the Ethernet cable and move the camera to its intended location after you have added the camera to your account (step 3).

# Setup Wizard

If you do not have a D-Link Cloud Router, you can use any Windows or Mac computer to go through the Setup Wizard, which will guide you through the installation process from connecting your hardware to configuring your camera.

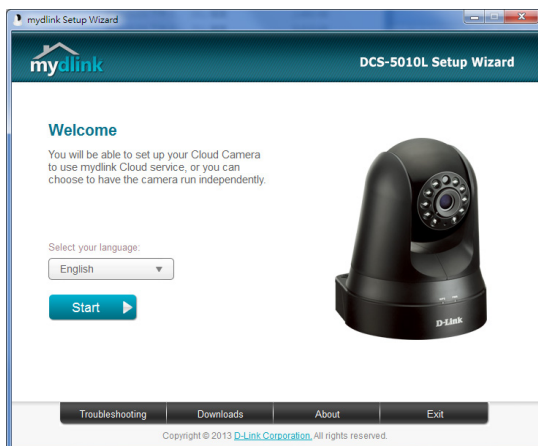


Please download the Setup Wizard from <http://www.mydlink.com/support>.

**Windows Users** - Extract ("unzip") the files to a folder on your computer and then double-click the **autorun.exe** file.

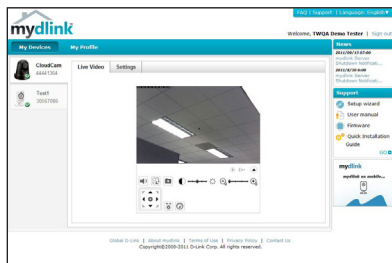
**Mac Users** - Download the Mac OS Setup Wizard. Open the **SetupWizard** file and launch the application.

After about 20-30 seconds, the Setup Wizard will open, which will guide you step-by-step through the installation process from connecting your hardware to configuring your camera and registering it with your mydlink account.



# Start mydlink

- 1 Open a web browser on any computer connected to the Internet.
- 2 Enter <http://www.mydlink.com> in the address bar and press **Enter**.
- 3 Sign in with your mydlink account registered in the Setup Wizard.



- Windows does not have Java installed by default. Please download it from <http://www.java.com>.
- In Mac OS X 10.7.x, Java applets are disabled by default. Click the **Finder > Applications > Utilities > Java Preferences** and check the **Enable applet plug-in** and **Web Start applications** option.
- The ActiveX® controls in IE will install automatically if needed. We suggest that you make sure that you have enabled the related options in **Tools > Internet Options > Security > Custom Level**.



If your image is blurry, you can manually focus the camera by adjusting the focus bezel.

## mydlink Lite App (Free)

Search for “mydlink lite” to download and install the app on your smartphone or tablet when connected to the Internet. You can also find the app by scanning the QR code below with a QR code scan app.



System Requirements: iOS version 4.3 or above. Android version 2.1 or above.

## mydlink+ App (Paid - Tablet Only)

Search for the word “mydlink+” to download and install the app on your tablet when connected to the Internet. You can also find the app by scanning the QR code below with a QR code scan app.



System Requirements: iOS version 4.3 or above. Android version 2.1 or above.

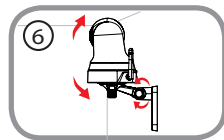
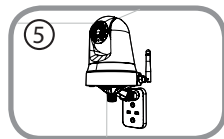
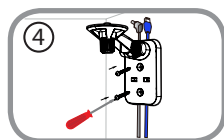
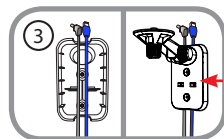
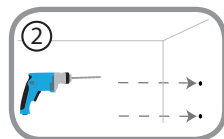
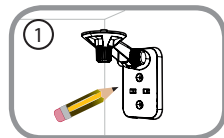
# Mount the Camera

Please refer to the steps below to assist you with mounting the camera.



We suggest that you configure the camera before mounting.

1. Place the mounting bracket where you want to position the camera and use a pencil to mark the holes.
2. Depending on the material of the wall or ceiling, use proper tools to drill two holes or screws where you marked. If the wall is made out of concrete, drill the holes first, then insert the plastic anchors to support the screws.
3. The power and Ethernet cables can be concealed behind the mounting bracket. Run the cables through the back of the mounting bracket, securing them with the built-in guides. Be sure to leave enough cable length protruding from the top to allow connection to the camera.
4. Fasten the mounting bracket to the wall using the screws provided.
5. Using the supplied thumbscrew, fasten the camera to the mounting bracket. Connect the power and Ethernet cables to the camera.
6. Adjust the angle of the arm on the mounting bracket as required. Tighten the thumbscrew to lock the arm in place.



Do not overtighten the screws as this may crack the bracket.

---

# Technical Support

This guide is only for the first time configuration. Please refer to the user manual to learn more or visit <http://www.mydlink.com> for more information. Also feel free to contact us. U.S. and Canadian customers can contact D-Link Technical Support through our website.

## USA



<http://support.dlink.com>

## Canada



<http://support.dlink.ca>

# D-Link®

Version 1.1  
June 26, 2013

Copyright ©2013 All rights reserved. D-Link and the D-Link logo are registered trademarks of D-Link Corporation or its subsidiaries. Other trademarks are the property of their respective owners. Maximum wireless signal rate derived from IEEE Standard 802.11g and 802.11n specifications. Actual data throughput will vary. Network conditions and environmental factors, including volume of network traffic, building materials and construction, and network overhead, lower actual data throughput rate. Environmental factors will adversely affect wireless signal range. Product specifications, size and shape are subject to change without notice, and actual product appearance may differ from that depicted on the packaging. Visit [dlink.com](http://dlink.com) (US) or [dlink.ca](http://dlink.ca) (Canada) for more details.

---