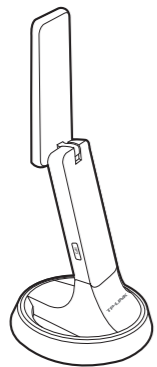


Quick Installation Guide



AC1900 High Gain
Wireless Dual Band USB Adapter

MODEL NO. Archer T9UH
7106505960 REV1.0.0

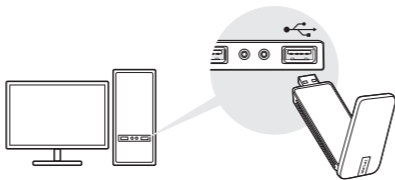


For Windows

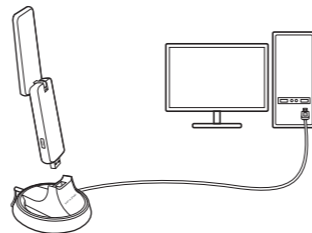
This USB Adapter can be powered only by computers that comply with Limited Power Source (LPS).

1 Connect to a Computer

Option 1: Directly



Option 2: Via the USB Cradle



or

Note:
In Windows XP, a Found New Hardware Wizard window will appear when the adapter is detected. Please click Cancel.

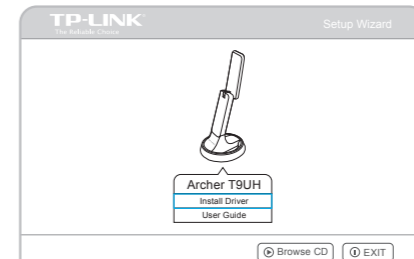
2 Install Driver

a. Insert the CD and run the **Autorun.exe** from the pop-up Autoplay window.

Notes:

1. You can also download the driver at www.tp-link.com.
2. In some operating systems, the CD screen will pop up automatically. Otherwise, run the CD manually.

b. Select Archer T9UH and click **Install Driver**, then follow the InstallShield Wizard to complete the installation.



3 Join a Wireless Network

Via Windows Wireless Utility

Click or (Network icon) on the taskbar, select your Wi-Fi network, and click **Connect**.

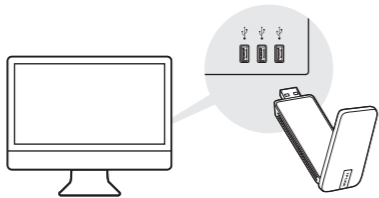


For more information, please visit our website
<http://www.tp-link.com>

Apple For Mac OS X

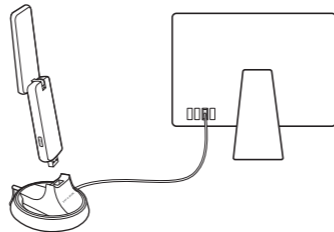
1 Connect to a Computer

Option 1: Directly



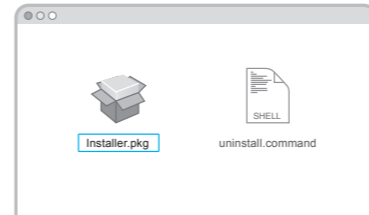
OR

Option 2: Via the USB Cradle



2 Install Driver and Utility

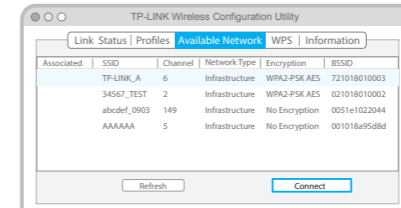
- Insert the CD.
Note: You can also download the driver and utility at www.tp-link.com.
- Browse the CD, go to **Archer T9UH > Mac OS X Driver**, unzip the **Mac OS X version.zip** file and run the Installer.
- Follow the wizard to complete the installation.



3 Join a Wireless Network

Option 1: Via TP-LINK Utility

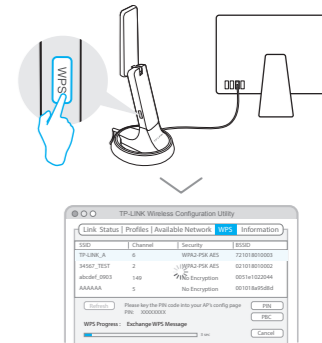
- Select the **Available Network** tab of the pop-up utility window.
- Select your Wi-Fi network and click **Connect**. The connection status can be viewed on the Link Status screen.



OR

Option 2: Via Wi-Fi Protected Setup (WPS)

- Press the WPS button on your router.
- Within 2 minutes, press and hold the WPS button on the adapter until the following screen appears.



- When you are prompted "WPS Protocol Finished", click **OK**.