

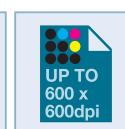
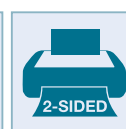
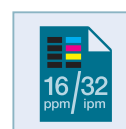
# WIRELESS, COMPACT SCANNING FOR YOUR OFFICE!



Capturing and sharing business critical information has never been easier. With true wireless connectivity the ADS-1100W can be shared across your workgroup allowing you to streamline your document management process.

### Features to optimise your workflow

- 2-sided scanning in a single pass
- 16ppm/32ipm
- Built in wireless connectivity
- Plastic ID card slot
- Scan to USB Flash Memory
- Compatible with Windows® and Mac
- Professional software suite included



## Compact. Stylish.

The perfect scanner to digitise your documents.

The ADS-1100W effortlessly scans your documents leaving the powerful software to take care of the rest, making your day more productive and efficient.



Wireless connectivity



Plastic ID card slot



2-sided scanning



Scan to USB

## Product features:

### High quality

- Up to 600 x 600 dpi
- Auto image rotation (if page placed upside down)
- Auto deskew (corrects documents scanned out of line)
- Auto crop
- Background colour removal
- Blank page detection & removal

### Compatibility

- The supplied TWAIN, WIA & ISIS drivers allow seamless integration into various document management systems

### Easy to use

- Touch sensitive control panel
- 20 page ADF (automatic document feeder)
- Built in wireless connectivity

### Compact and flexible

- Compact dimensions 285(W) x 103(D) x 84(H)mm
- 2-sided scanning
- Scan anything from business cards, plastic ID cards, receipts and up to A4 2-sided documents

### Fast and efficient

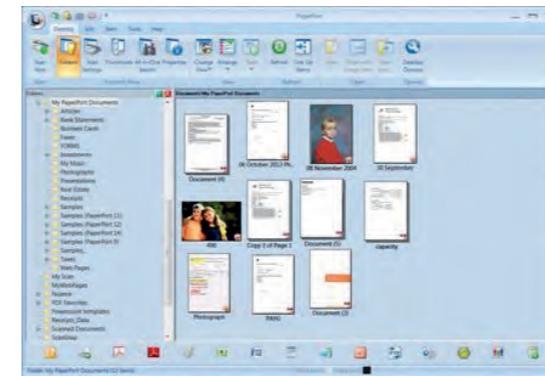
- Single sided scan speed up to 16ppm (pages per page) in mono and colour
- 2-sided scan speed up to 32ipm (images per page) in mono and colour
- Scan to various destinations including: image, e-mail, OCR, file, FTP, SharePoint®<sup>1</sup> and USB flash memory
- Dedicated plastic ID card slot

## The bundled suite of software includes:

The ADS-1100W is bundled with powerful software to become the perfect solution for document management and improved workflow. Helping you to access and retrieve documents whilst away from the office. Share documents to improve communication and collaboration, cutting down the amount of paper you have to travel with.

### Nuance™ PaperPort™ 12SE (Windows®)

Powerful document management, editing and PDF creation program with connector for Microsoft® SharePoint®.



### NewSoft® Presto!® PageManager 9 (Mac)

Scan and organise digitised files. View, edit, e-mail or save files as searchable PDF, HTML, RTF, or TXT files.

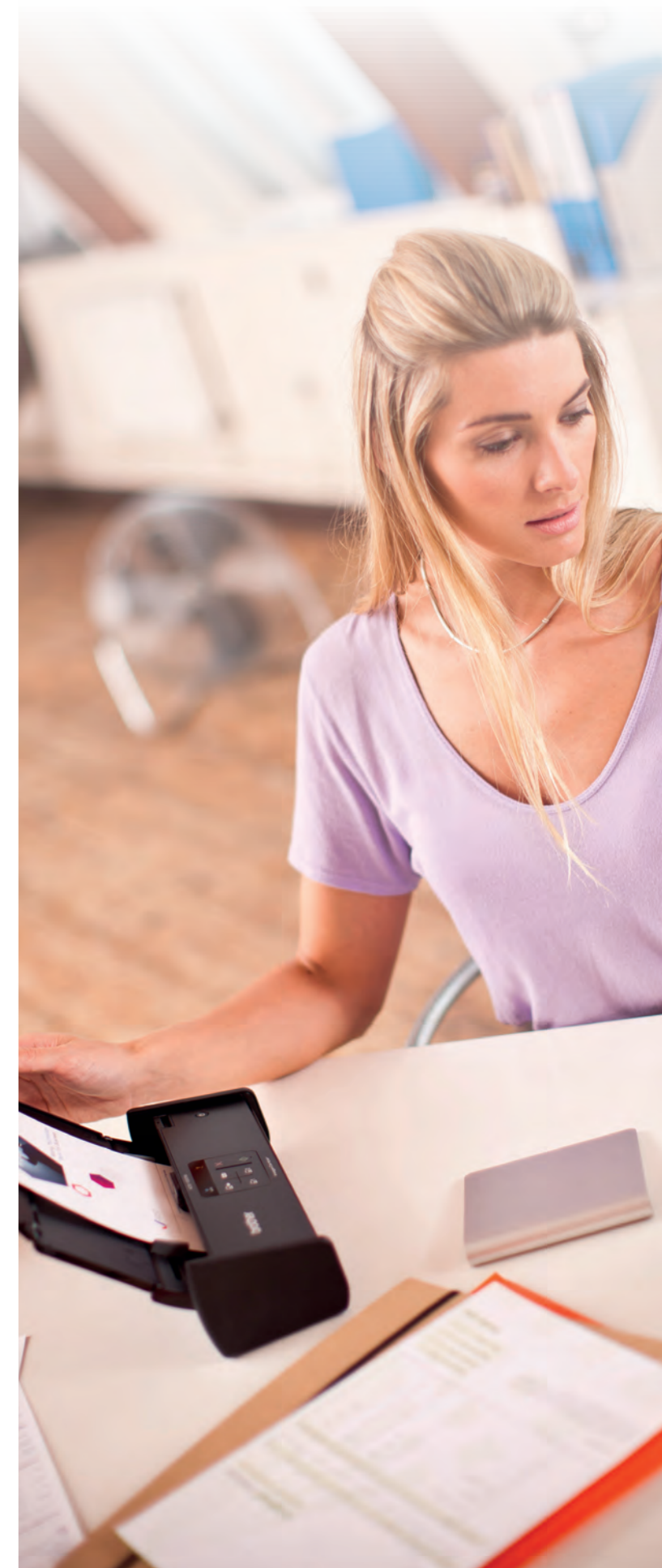
### NewSoft® Presto!® BizCard 6 (Windows® and Mac)

Scan and export editable contact information directly to Microsoft® Outlook® and other contact management systems.

### Control Center 4 (Windows®) / Control Center 2 (Mac)

Brother Control Center enables you to customise your settings to make scanning your documents more efficient.

This scanner has all the features to make my day more efficient



## IMPROVE YOUR WORKFLOW



### SCAN

Scan your documents into searchable PDF files.



### ARCHIVE

Archive your documents using the powerful bundled software.



### SEARCH

Quickly and easily retrieve your documents for editing, viewing, sharing or printing.

## ADS-1100W Specification

### GENERAL

Scanner Type	Automatic document feeder (ADF), automatic 2-sided scanning
Scanning Modes	Colour, greyscale & monochrome
Image Sensor	2 x CMOS dual CIS (contact image sensor) 1 x front and 1 x rear to enable single pass 2-sided scanning
Interface	Hi-Speed USB 2.0, Wireless 802.11b/g/n
Wireless Setup	WPS, AOSS
Wireless Security	WEP 64/128 bit, WPA-PSK (TKIP/AES), WPA2-PSK (AES)

### SCANNING

Standard Colour & Mono Scan Speed	Up to 16ppm (pages per minute) A4 up to 300 dpi
2-Sided Colour & Mono Scan Speed	Up to 16ppm (pages per minute), 32ipm (images per minute) A4 up to 300 dpi
Optical Scan Resolution	Up to 600 x 600 dpi (dots per inch)
Interpolated Scan Resolution	Up to 1,200 x 1,200 dpi (dots per inch)
Colour Depth	30-bit internal & 24-bit external
Gray Scale	256 levels
Supported File Formats	JPEG, TIFF, & PDF (standard, archive (PDF/A), searchable and password protected)
Scan to USB	Scan directly to a USB flash memory drive, removing the requirement for a PC
Scan to E-mail	Scan documents directly into your e-mail communications software
Scan to OCR	Scan documents directly into your word processing application, e.g. Microsoft® Word, for instant editing
Scan to File	Scan directly to a file on your computer or network
Scan to Image	Scan directly into your preferred image editing software
Scan to Searchable PDF	Scan documents into a PDF file, which enables users to search for key words inside it
Scan to Mobile Devices	Scan directly to a mobile device with the Brother iPrint&Scan app
Scan to FTP	Scan directly to an FTP server

### SCANNER DRIVER

Windows®	ISIS®, TWAIN & WIA (Windows® 8, Windows® 7, Windows® Vista 32 & 64 bit versions & Windows® XP 32 bit versions)
Macintosh	TWAIN & ICA (Mac OS X v10.6.8, v10.7.x, v10.8.x)
Linux	SANE <sup>2</sup>

### SOFTWARE FOR WINDOWS®

Brother Control Center 4	Easy to use scan software from Brother
NewSoft® Presto! BizCard® 6	Global business card management solution
Nuance™ PaperPort™ 12SE	Powerful document management, PDF creation and editing, including connector for Microsoft® SharePoint®

### SOFTWARE FOR MAC

Brother Control Center 2	Easy to use scan software from Brother
NewSoft® Presto! BizCard® 6	Global business card management solution
NewSoft® Presto!®	
PageManager® 9	Document management & sharing program

### PAPER HANDLING

Paper Input	Up to 20 sheets
Custom Paper Types & Sizes	Between 51mm - 215.9mm in width & 70mm - 297mm in length
Long Paper Scanning	Yes, up to 215.9mm wide & 863mm long (1 at a time)
Business Card Scan Support	Yes (1 at a time)
Plastic Card Scan Support	Yes (1 at a time)
Receipt Scanning	Yes, with carrier sheet

### DUTY CYCLE

Maximum Daily	Up to 500 pages
---------------	-----------------

### WEIGHTS & DIMENSIONS

With Carton	380(W)x170(D)x207(H)mm 2.5KG
Without Carton	285(W)x103(D)x84(H)mm 1.5KG

### ENVIRONMENT

Power Consumption (Scanning)	14W
Power Consumption (Ready)	4W
Power Consumption (Deep Sleep)	1.5W
Power Consumption (Off)	0.25W
Sound Pressure Level (Active)	47dB or less
Sound Power Level (Active)	59dB or less



## Brother Online

Brother offer various software and services to help improve your business efficiency and workflow. To see how we can help your business please visit: [online.brother.eu](http://online.brother.eu)

<sup>1</sup>Requires software that comes bundled with the machine

<sup>2</sup>Downloadable free of charge from <http://solutions.brother.com>

Contact:

**brother**  
at your side

### Brother International Europe Ltd

Brother House, 1 Tame Street, Audenshaw, Manchester M34 5JE

Tel: +44 (0)161-330 6531 Fax: +44 (0)161-330 5520

Website: [www.brother.com](http://www.brother.com)

All specifications correct at time of printing. Brother is a registered trademark of Brother Industries Ltd. Brand product names are registered trademarks or trademarks of their respective companies.