

## USB 3.0/eSATA 8-Bay Removable 2.5/3.5" SATA Hard Drive Enclosure with UASP

S355BU33ERM / S358BU33ERM



\*actual product may vary from photos

DE: Bedienungsanleitung - [de.startech.com](http://de.startech.com)

FR: Guide de l'utilisateur - [fr.startech.com](http://fr.startech.com)

ES: Guía del usuario - [es.startech.com](http://es.startech.com)

IT: Guida per l'uso - [it.startech.com](http://it.startech.com)

NL: Gebruiksaanwijzing - [nl.startech.com](http://nl.startech.com)

PT: Guia do usuário - [pt.startech.com](http://pt.startech.com)

For the most up-to-date information, please visit: [www.startech.com](http://www.startech.com)

## FCC Compliance Statement

This equipment has been tested and found to comply with the limits for a Class B digital device, pursuant to part 15 of the FCC Rules. These limits are designed to provide reasonable protection against harmful interference in a residential installation. This equipment generates, uses and can radiate radio frequency energy and, if not installed and used in accordance with the instructions, may cause harmful interference to radio communications. However, there is no guarantee that interference will not occur in a particular installation. If this equipment does cause harmful interference to radio or television reception, which can be determined by turning the equipment off and on, the user is encouraged to try to correct the interference by one or more of the following measures:

- Reorient or relocate the receiving antenna.
- Increase the separation between the equipment and receiver.
- Connect the equipment into an outlet on a circuit different from that to which the receiver is connected.
- Consult the dealer or an experienced radio/TV technician for help.

## Use of Trademarks, Registered Trademarks, and other Protected Names and Symbols

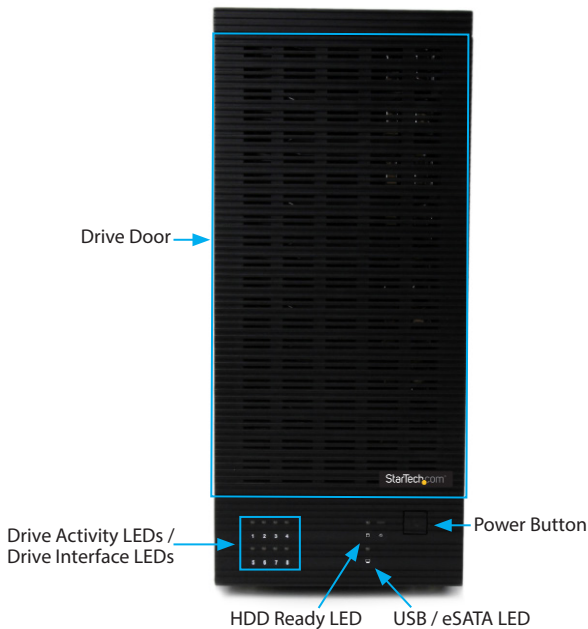
This manual may make reference to trademarks, registered trademarks, and other protected names and/or symbols of third-party companies not related in any way to StarTech.com. Where they occur these references are for illustrative purposes only and do not represent an endorsement of a product or service by StarTech.com, or an endorsement of the product(s) to which this manual applies by the third-party company in question. Regardless of any direct acknowledgement elsewhere in the body of this document, StarTech.com hereby acknowledges that all trademarks, registered trademarks, service marks, and other protected names and/or symbols contained in this manual and related documents are the property of their respective holders.

# Table of Contents

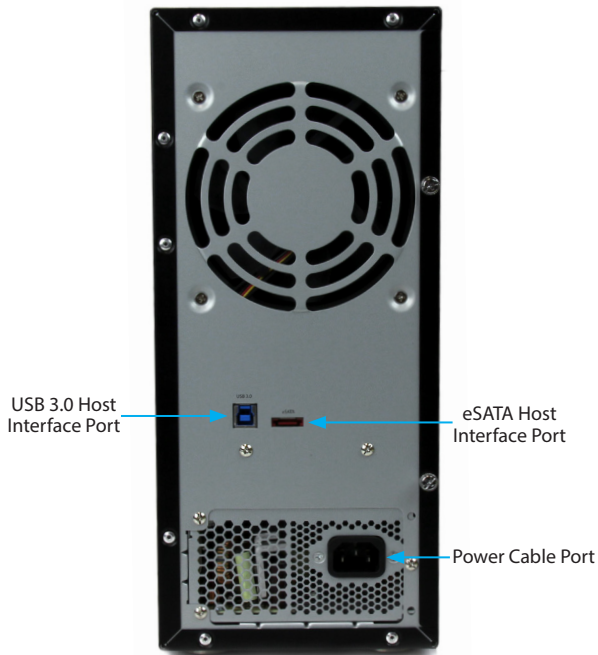
<b>Product Diagram .....</b>	<b>1</b>
Front View .....	1
Rear View - S358BU33ERM.....	2
Rear View - S355BU33ERM.....	3
<b>Introduction .....</b>	<b>4</b>
Packaging Contents .....	4
System Requirements.....	4
<b>Hardware Installation .....</b>	<b>5</b>
<b>How to Use .....</b>	<b>10</b>
Connecting the Hard Drive.....	10
LED Indicators.....	10
Disconnecting the Hard Drive .....	10
Initializing the Hard Drive .....	11
<b>Technical Support .....</b>	<b>12</b>
<b>Warranty Information.....</b>	<b>12</b>

# Product Diagram

## Front View



## Rear View - S358BU33ERM



## Rear View - S355BU33ERM



# Introduction

## Packaging Contents

- 1x USB 3.0 / eSATA SSD/HDD Enclosure (S355BU33ERM / S358BU33ERM)
- 1x SATA to eSATA full profile bracket
- 1x eSATA cable
- 1x USB 3.0 cable
- 1x 2.5" drive Installation screw kit
- 1x 3.5" drive Installation screw kit
- 3x Power cables (NA/UK/EU)
- 1x Instruction manual

## System Requirements

- 1X Computer system with available USB port or eSATA port (Internal SATA to eSATA Desktop Adapter included)

**Note:** For all of the drives to be detected and functional when using eSATA, the eSATA interface must support Port Multiplier and be able to detect and support a minimum number of disks equal to the number of bays in the enclosure.

- (S355BU33ERM) Up to 8 X 2.5/3.5" SATA Hard Drives / Solid State Drives (HDD/SSD)  
**Or**
- (S358BU33ERM) Up to 5 x 2.5/3.5" SATA Hard Drive / Solid State Drives (HDD/SSD)

# Hardware Installation

**WARNING!** Hard drives and storage enclosures require careful handling, especially when being transported. If you are not careful with your hard disk, lost data may result. Always handle your hard drive and storage device with caution. Be sure that you are properly grounded by wearing an anti-static strap when handling computer components or discharge yourself of any static electricity build-up by touching a large grounded metal surface (such as the computer case) for several seconds.

1. Grasp the drive door on the right side and pull it outwards toward you, to reveal the drive trays.

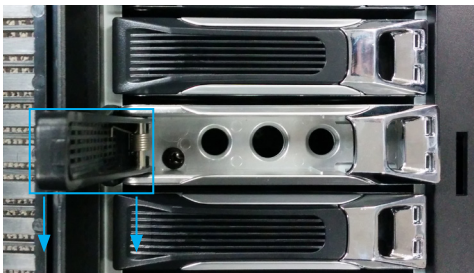


2. Release your desired drive tray, by pulling the silver colored release tab to the right hand side, realising the drive tray arm.





- Slide the drive tray out of the slot, by gently grasping the drive tray arm and pulling the tray out toward you.



- Install your 2.5" or 3.5" hard drive, in the hard drive tray.

**Note:** 2 types of drive screws are included. Larger screws for 3.5" drives, and smaller screws for 2.5" (Pictured below). Please ensure you are using the proper screw for your specific drive.



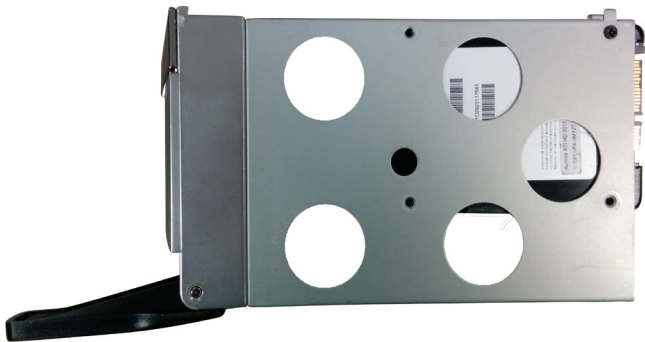
Larger screw for 3.5" drives



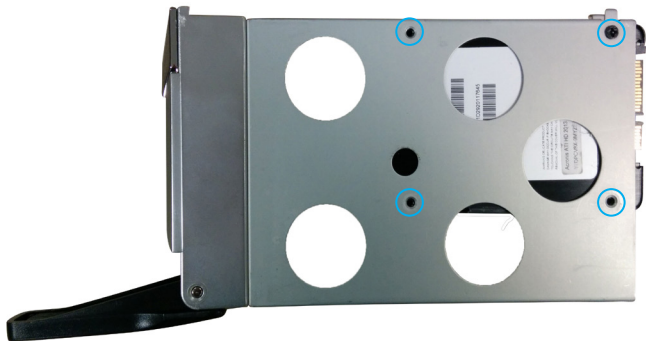
Larger screw for 2.5" drives

a) If you are installing a 2.5" HDD/SSD

- i. Line up the bottom facing drive mount holes on your HDD/SSD, with the bottom drive holes on the drive tray.

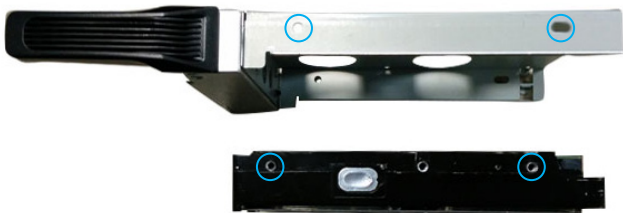


- ii. Using a Phillips head screw driver (not included), drive 4 of the 2.5" drive screws through the bottom drive holes on the drive tray into the mount holes on your HDD/SSD.

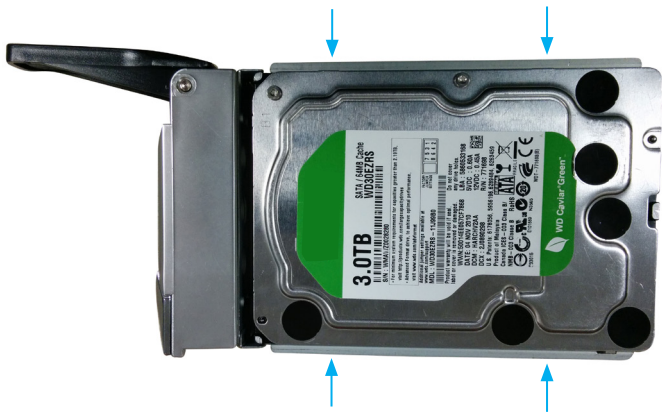


b) If you are installing a 3.5" HDD

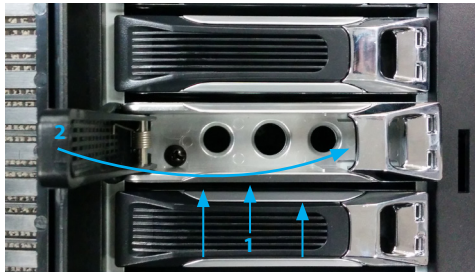
- i. Line up the side facing drive mount holes on your HDD, with the side drive holes on the drive tray.



- ii. Using a Phillips head screw driver (not included), drive 4 of the 3.5" drive screws through the bottom drive holes on the drive tray into the mount holes on your HDD.



5. While holding the drive tray arm open, slide the drive tray back into the slot it was removed from. Once the drive tray has been inserted, press the drive tray arm back into the latched position. Note: You will notice that as the drive tray arm is closed back into its original position that the tray may shift inwards a little. This is how the tray inserts the drive.



Note: Please repeat steps 2 through 5 for each additional drive.

6. Using the included **power Cable**, connect the **Power Cable Port** on the **S355BU33ERM/S358BU33ERM** to an available power outlet.

Note: The S355BU33ERM will require the correct voltage be selected. Using a screw driver or pen make sure to select 115V or 230V depending on your needs.

7. Connect the **S355BU33ERM/S358BU33ERM** to your computer system using the included **USB 3.0 cable** or the **eSATA cable** depending on your desired host connection.

# How to Use

## Connecting the Hard Drive

Once the enclosure has been attached to a computer, and powered on, your computer system will automatically recognize the drive(s) and it will be accessible as though it were installed in the system internally.

**Note:** If your computer fails to automatically recognize your drive it is likely your drive has not been initialized or formatted correctly. (See Drive Initialization below for further instructions.)

## LED Indicators

### USB / eSATA LED

The USB / eSATA LED indicates that your host interface (USB or eSATA) is connected and communicating with the enclosure.

### HDD Ready LED

The HDD Ready LED indicates that one or more drives are currently installed in the enclosure.

### Drive Activity LEDs

The hard drive enclosure offers LED indicators for each drive, so you can monitor drive activity. The LED will flash while the hard drive is being accessed. Do not remove the enclosure from the host computer while the LED is flashing, as it could damage the drive or the enclosure, resulting in data loss.

## Disconnecting the Hard Drive

### Windows

1. Select the "Safely remove Hardware and Eject Media" icon, located in the task bar.
2. Select the Mass Storage Device from the list that appears.
3. Wait for the message indicating that it is now safe to remove the device.

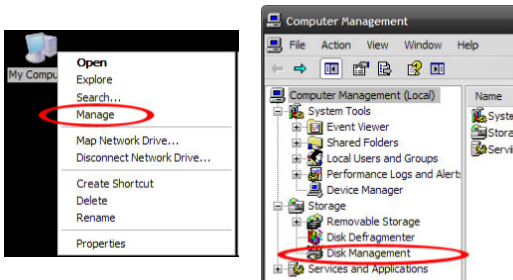
**Note:** Removing the connected drive prior to receiving notification that it is safe to do so, could result in losing or corrupting data stored on the drive. Once the Safe to Remove Hardware message appears, please disconnect the enclosure from the computer by removing the USB connection.

## Mac OS X

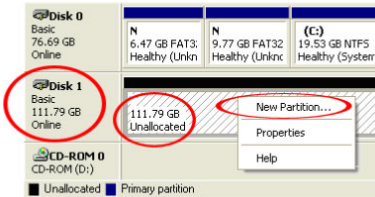
To safely disconnect the attached drive from the host computer, close any windows listing the contents of the removable drive. Once all windows are closed, click on the USB storage icon on the desktop, and drag it to the Trash Can icon on the desktop. Allow 5 seconds before physically removing the enclosure/driver from the computer.

## Initializing the Hard Drive

1. If the drive array is new it may need to be initialized and formatted before use. From the main Windows desktop, right-click on "My Computer" ("Computer" in Vista / 7 / 8), then select Manage. In the new Computer Management window, select Disk Management from the left window panel.



2. A dialog window should automatically appear, asking you to initialize the drive. Depending on the version of Windows, it will give you the option of either creating an "MBR" or "GPT" disk. GPT (GUID partition) is required for drives larger than 2TB but is not compatible with some older operating systems, while MBR is supported by newer and older operating systems.
3. Once initialized, locate the Disk that says it is "Unallocated" (check the listed hard drive capacity to confirm it's the correct hard drive) and then right-click in the section that says "Unallocated" and select "New Partition".



4. Several on screen prompts will follow walking you through the steps to create the partition. Follow these prompts to complete partition creation.

# Technical Support

StarTech.com's lifetime technical support is an integral part of our commitment to provide industry-leading solutions. If you ever need help with your product, visit [www.startech.com/support](http://www.startech.com/support) and access our comprehensive selection of online tools, documentation, and downloads.

For the latest drivers/software, please visit [www.startech.com/downloads](http://www.startech.com/downloads)

## Warranty Information

This product is backed by a two year warranty.

In addition, StarTech.com warrants its products against defects in materials and workmanship for the periods noted, following the initial date of purchase. During this period, the products may be returned for repair, or replacement with equivalent products at our discretion. The warranty covers parts and labor costs only. StarTech.com does not warrant its products from defects or damages arising from misuse, abuse, alteration, or normal wear and tear.

### Limitation of Liability

In no event shall the liability of StarTech.com Ltd. and StarTech.com USA LLP (or their officers, directors, employees or agents) for any damages (whether direct or indirect, special, punitive, incidental, consequential, or otherwise), loss of profits, loss of business, or any pecuniary loss, arising out of or related to the use of the product exceed the actual price paid for the product. Some states do not allow the exclusion or limitation of incidental or consequential damages. If such laws apply, the limitations or exclusions contained in this statement may not apply to you.

Hard-to-find made easy. At StarTech.com, that isn't a slogan. It's a promise.

StarTech.com is your one-stop source for every connectivity part you need. From the latest technology to legacy products — and all the parts that bridge the old and new — we can help you find the parts that connect your solutions.

We make it easy to locate the parts, and we quickly deliver them wherever they need to go. Just talk to one of our tech advisors or visit our website. You'll be connected to the products you need in no time.

Visit [www.startech.com](http://www.startech.com) for complete information on all StarTech.com products and to access exclusive resources and time-saving tools.

*StarTech.com is an ISO 9001 Registered manufacturer of connectivity and technology parts. StarTech.com was founded in 1985 and has operations in the United States, Canada, the United Kingdom and Taiwan servicing a worldwide market.*