

## USER MANUAL

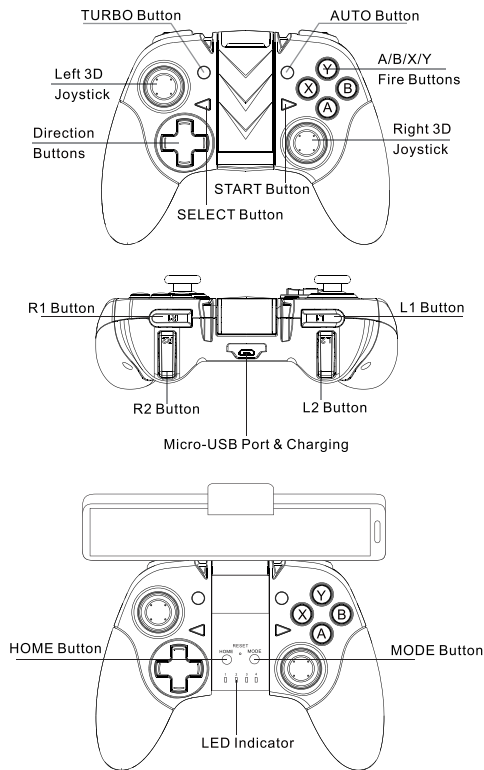
P023-TF-X24



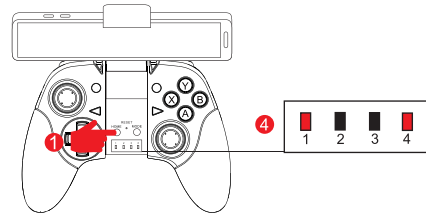
# X24

GamePad Bluetooth

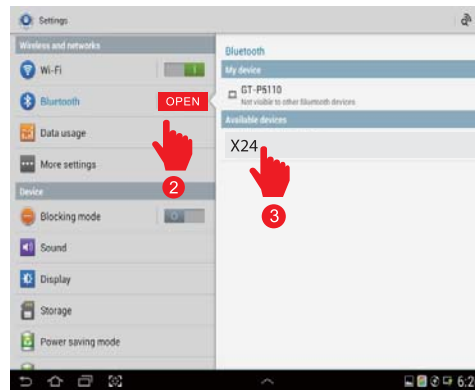
### Product Picture & Function:



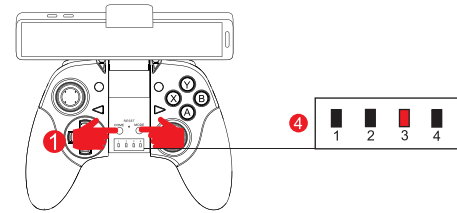
### Operation on Android system:



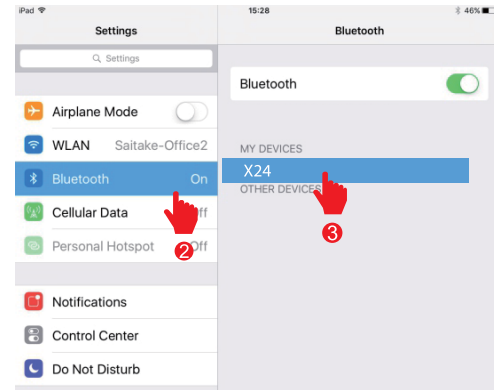
1. Press "HOME" Button for 6/8 seconds till the "LED1" indicator start blinking very fast (ATTENTION please wait till indicator blinks very fast, at beginning it blink but not fast). (Note: "LED1" Indicator is blinking with speed of 4 times per second.)
2. Open the bluetooth setting interface on android system, open "Bluetooth", click "Scan".
3. After finding the device name "X24" or "GAMEPAD" on available devices, touch it into "Pairing", it will automatically connect after few seconds.
4. The indicator of "LED1" and "LED4" will keep light on after successfully connected.



### Operation on IOS System:

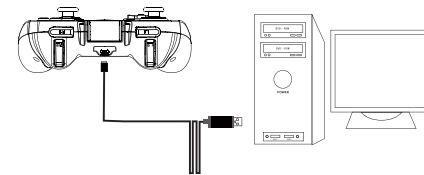


1. Press "MODE"+"HOME" buttons together for 6/8 seconds till the "LED3" start blinking very fast. ATTENTION please wait till indicator blinks very fast, at beginning it blink but not fast. (Note: "LED1" Indicator is blinking with speed of 4 times per 1 second.)
2. Open the interface of settings on IOS system, open the "Bluetooth".
3. Scan the devices and get the device name of "STK-7004X" or "GAMEPAD", touch the device into "Pairing", it will connect after few seconds.
4. The "LED3" indicator will keep light on after connected successfully.



### PC-GAMEPAD Function:

Plug the Micro-USB cable into "CHARGING" Micro-USB Port, then put the USB port on Computer, it will work after windows system identified automatically; After connected, the "LED1" indicator will keep light on, the "LED4" indicator will blinkle.



Note:

1. While plug off the USB port from computer, the "LED1" indicator will be blinking, the gamepad will turn into status of pairing.
2. If there is any device already connected with gamepad before, and the bluetooth function is turned on, then the gamepad will connect with the device automatically.
3. If there is none device connected with gamepad before, the gamepad will turn into the status of scan & match.
4. It will power off after 5-10 seconds without any operation.
5. The mode is suitable for the windows games which can set the key/button.

### Indicator:

	Android Gamepad Mode	Mouse & Media Mode	ICADE Mode on IOS	Charging Status
Indicator 1	Bright	---	---	---
Indicator 2	---	Bright	---	---
Indicator 3	---	---	Bright	---
Indicator 4	Bright	---	---	Bright

### Technical Specification

Product Code: P023-TF-X24

Bluetooth version: 2.1+EDR

Frequency Band: 2.400GHz ~2.485GHz

Maximum Power Transmitted (EIRP): <100 mW

Battery: Rechargeable Li-Ion 300mA

Charge time: 1,5 hrs Standby time: 10 min

Time of continuous use: 6-10hrs

Turn on time: 2 s Turn off time: 3 s

Support Android 3.0+ Support IOS 9.2.1



**TurboFire X market**

turbofire.atlantis-land.com

### WARNING: Read carefully before using the product.

The gamepad Turbofire X24 is compatible with Andoid games that support HID standards and with IOS games that support the standard ICADE. How to find compatible games:

1) You can download a list of compatible games from the site Atlantis at: turbofire.atlantis-land.com

2) You can search in the market dedicated compatible games:

- ISO: After launching "APP Store" research "ICADE". Carefully before you play you need to set the language as ENGLISH INPUT or the game may not work.
- Android: Having launched "Play Store" research "gamepad compatible games"

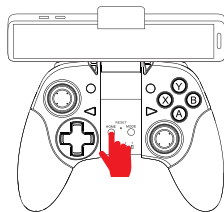
3) You can search for information of compatible games by searching for "HID compatible games" or "HID compatible games" or similar

Important: Some games downloaded by doing this research may still not be completely compatible with the required settings and / or inserted incorrectly by producers in these lists, or ultimately not be compatible with your mobile device or TV box.

4) We have established a dedicated market from which you can find a list of games compatible with Turbofire X24. You can download the APK of the market at this address turbofire.atlantis-land.com or directly reading the QR code attached. Inside the APP click on the selection: "OTHER SELECTIONS EDITORIAL" on the home page or in the category "Turbofire X24"; Here you will find a list of games compatible with the Game Pad.

Attention in this case the games were tested with the gamepad with a specific hardware. mobile devices or different Android TV box might otherwise be compatible with the game or with the controller.

### "ANALOG" Switch to "DIGITAL" MODE:



Press the "HOME" Button shortly, the mode will be changed between "ANALOG" mode and "DIGITAL" mode.

ANALOG MODE's indicator

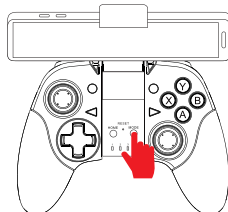


DIGITALMODE's indicator



### MOUSE MODE (for Android OS):

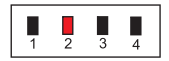
Press the "MODE" Button Shortly, the Gamepad will change the mode between "GAMEPAD" and "MEDIA".



GAMEPAD MODE's indicator



MEDIA MODE's indicator

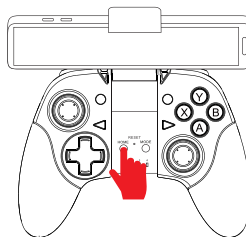


### Sleeping & Wake Up:

Without any operation,5-10 minutes later, the gamepad will turn into sleeping mode. Press the "HOME" Button shortly, the gamepad will power on and will connect the device which paired & connected the last time.

### Power Off:

Press the "HOME" Button 3-5 seconds, all indicators will black out, the gamepad power off.



### Games Download:

For android system, the bluetooth gamepad can support Happy chicken such a game platform, and also can support another android games which support HID gamepad. For firther information read the warning page.

#### Nota:

- 1.TV is for android TV set or android media box devices;
- 2.Mostly simulator and revised games can support gamepad, for other games maybe not support; Recommend TV version to download and install.

#### Nota:

- 1.Some games maybe not compatible with your device for the hardware compatible's problems, it is not the problem of gamepad.
- 2.Because Android system is open system, if you download the games from another way, it may not control by gamepad.
- 3.If cannot control the games with gamepad, please have a check the games support gamepad or not.
- 4.Strongly recommend the android games as our game list.

#### Nota:

- 1.Before playing games, please install the games before connect with bluetooth gamepad.
- 2.All the ICADE games must be under ICADE mode to play, otherwise, the gamepad cannot work.
- 3.ICADE mode must be under English input, otherwise doesn't work.

#### Nota:

- \* In ICADE mode, the Iphone/Ipad 's input method must be set as ENGLISH.
- \* We ensure the gamepad can use for mostly famous brands of smartphone, tablet, not assure for copycat and MTK's devices.
- \*If there is none function while playing games, or cannot control the games such happened problems, please check the mode is correct or not. Please check the games whether support the gamepad or not.
- \*If there is another problems happened while playing games, please use the 1mm thick needles to insert into the RESET hole in gamepad, press RESET to turn off the gamepad, few seconds later to operation again.

### FAQ:

**Q:The gamepad had connected with devices,but cannot operate the games on android?**

- 1)Please power off the bluetooth gamepad, and delete the paired record on the device, then try to pair with device again.
- 2)There were some problems derived from the android system been revised, or the hardware.
- 3)The games do not support HID gamepad feature, or gamepad need connect the device firstly before you playing.

**Q:Cannot input any words after connect with gamepad?**

A:Please power off the gamepad;

**Q:Failed to connect the gamepad, how to do?**

- 1)Deleted the pairing record, close the bluetooth, open the bluetooth after few seconds, scan bluetooth device and pairing again.
- 2)Reset the gamepad, try to pair again.

**Q:Gamepad cannot power on?**

A:Battery low, charge the gamepad (15-30 minutes).

**Q:LED4 is blinking when connect with device, sometimes is bright?**

- 1)LED4 is twinkling means the battery will be used up and must be charged soon;
- 2)When LED4 bright, it is the indicator of analog mode in Android gamepad mode, press the HOME button shortly, the LED 4 will extinguish, the gamepad turn into digital mode under gamepad mode.

**Q:Why can not control the game on IOS, even i download ICADE games?**

- 1)While playing ICADE games, must confirm the input method is English.
- 2:Some games required touch screen into playing, then use gamepad to control.
- 3)Some games need to set as ICADE control on setting interface.



Atlantis

www.atlantis-land.com

Atlantis is a registered trademark of Hellatron S.p.A. properties

Via Enrico Mattei,10 - 20010 Pogliano Milanese (MI) - Italy  
Tel: +39 02 99 76 011 - Fax: +39 02 99 76 01 37  
info@atlantis-land.com - www.atlantis-land.com

### Installing and replacing batteries

The product contains a battery that could be replaced during the lifetime of the product itself. Dispose of the battery contained in the product correctly at the end of their useful lifespan (thus when it can no longer be charged) by placing it in appropriate battery disposal container separate from generic unsorted waste. Collection and recycling of batteries helps protect the environment and preserve natural resources, allowing recovery of valuable materials.

For proper disposal of the battery disassemble the product and remove the battery.