

Zebra®
RW 420 Route Solutions

**Accessory Kit Safety,
Installation
and User Guide**

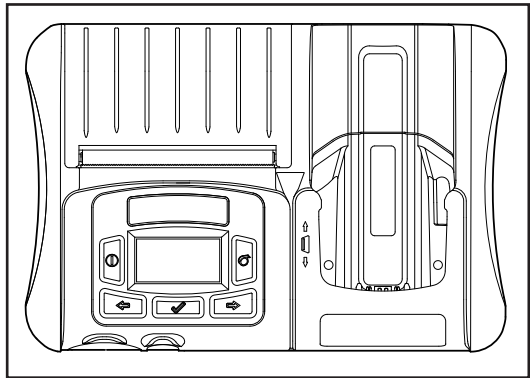


TABLE OF CONTENTS

RW 420 Route Solutions Accessory Kit Safety, Installation and User Guide	EN-2
Le système RW 420 Route Solutions Guide de sécurité, d'installation et d'utilisation	FR-20
RW 420 Route Solutions-System Sicherheits, Installations und Benutzerhandbuch	DE-39
El sistema RW 420 Route Solutions Guía de seguridad, instalación y uso..	ES-57
Il sistema Route Solutions RW 420 Manuale di installazione, uso e sicurezza	IT-74
unidade multifuncional portátil RW 420 Manual de segurança, instalação e do usuário	PT-92

PROPRIETARY STATEMENT

This manual contains proprietary information of Zebra Technologies Corporation. It is intended solely for the information and use of parties operating and maintaining the equipment described herein. Such proprietary information may not be used, reproduced, or disclosed to any other parties for any other purpose without the expressed written permission of Zebra Technologies Corporation.

Product Improvements

Since continuous product improvement is a policy of Zebra Technologies Corporation, all specifications and signs are subject to change without notice.

FCC Compliance Statement

Class B digital device. Tested to comply with FCC standards for home or office use.

WARNING: Exposure to Radio Frequency radiation with certain versions of the printer used with this product. To conform to FCC RF exposure requirements this device shall be used in accordance with the operating conditions and instructions listed in the printer's User Guide. There are several radio options available with the printer used in conjunction with this product. Additional regulatory information is contained in the printer's Users Guide in sections devoted to each radio option.

NOTE: This unit was tested with shielded cables on the peripheral devices. Shielded cables must be used with the unit to ensure compliance.

Changes or modifications to this unit not expressly approved by Zebra Technologies Corporation could void the user's authority to operate this equipment.

Canadian Compliance Statement

This Class B digital apparatus complies with Canadian ICES-003.

Cet appareil numérique de la classe B est conforme à la norme NMB-003 du Canada.

"IC:" before the equipment certification number signifies that the Industry Canada technical specifications were met. It does not guarantee that the certified product will operate to the user's satisfaction.

Agency Approvals and Regulatory Information

- FCC part 15 Class B
- Canadian STD ICES-003 Class B
- EN55022:1998 Class B European Electromagnetic Radiation Standard
- EN55022:1998 European Immunity Standard
- EN60950: 2000 Safety Standard

Liability Disclaimer

Inasmuch as every effort has been made to supply accurate information in this manual, Zebra Technologies Corporation is not liable for any erroneous information or omissions. Zebra Technologies Corporation reserves the right to correct any such errors and disclaims liability resulting therefrom.

No Liability for Consequential Damage

In no event shall Zebra Technologies Corporation or anyone else involved in the creation, production, or delivery of the accompanying product (including hardware and software) be liable for any damages whatsoever (including, without limitation, damages for loss of business profits, business interruption, loss of business information, or other pecuniary loss) arising out of the use of or the results of use of or inability to use such product, even if Zebra Technologies Corporation has been advised of the possibility of such damages. Because some states do not allow the exclusion of liability for consequential or incidental damages, the above limitation may not apply to you.

Copyrights

The copyrights in this manual and the label print engine described therein are owned by Zebra Technologies Corporation. Unauthorized reproduction of this manual or the software in the label print engine may result in imprisonment of up to one year and fines of up to \$10,000 (17 U.S.C.506). Copyright violators may be subject to civil liability.

Devices used with this product may contain ZPL®, ZPL II®, and ZebraLink™ programs; Element Energy Equalizer® Circuit; E3®; and AGFA fonts. Software © ZIH Corp. All rights reserved worldwide.

ZebraLink and all product names and numbers are trademarks, and Zebra, the Zebra logo, ZPL, ZPL II, Element Energy Equalizer Circuit, and E3 Circuit are registered trademarks of ZIH Corp. All rights reserved worldwide.

CG Triumvirate is a trademark of AGFA Monotype Corporation. All rights reserved worldwide.

CG Triumvirate™ font © AGFA Monotype Corporation. Intellifont® portion © AGFA Monotype Corporation. All rights reserved worldwide. UFST is a registered trademark of AGFA Monotype Corporation. All rights reserved worldwide.

All other brand names, product names, or trademarks belong to their respective holders.

©2009 ZIH Corp

Special Notices

The following notices emphasize certain information in this guide. Each serves a special purpose and is displayed in the format shown:



NOTE: Note is used to emphasize any significant information.

Caution: Indicates information that, if not followed, can result in damage to software, hardware, or data.



Caution: This symbol indicates a potentially hazardous situation which, if not avoided, can result in personal injury.



Caution: This warning symbol indicates a potentially hazardous situation which, if not avoided, may be a shock hazard.



Warning: This warning symbol indicates an imminently hazardous situation which, if not avoided will result in death or serious injury. Before you work on any equipment, be aware of the hazards involved with electrical circuitry and be familiar with standard practices for preventing accidents

Vehicle Installation Safety

Caution: Only trained and qualified personnel should be allowed to install, replace, or service this equipment.



Caution: DO NOT USE THE RW 420 ROUTE SOLUTIONS WHILE DRIVING, as this may result in property damage or personal injury. Zebra Technologies Corp. does not promote the use of these products except when parked or stationary, and is not responsible for any loss resulting from the use or misuse of our products. Most importantly, we do not want to see harm come to our customers or anyone else.

Caution: Do not install RW 420 Route Solutions where they will be exposed to precipitation or excessive condensation.



Caution: Do not install RW 420 Route Solutions on or near an airbag cover plate or within an airbag zone. Also, do not install RW 420 Route Solutions in a location that will affect vehicle safety or operation.



Caution: The means of routing and securing the Power Input cable from the RW 420 Route Solutions through to the vehicle power source is extremely important. Hazards associated with improper wiring can be severe. To avoid unintentional contact between the wire and any sharp edges, provide the cable with proper bushings and clamping where it passes through openings. If the wire is subjected to sharp surfaces and excess engine vibration, the wiring harness insulation can wear away, causing a short between the bare wire and the chassis. This can start a fire.

Caution: The vehicle charging circuit must neither undercharge nor overcharge the vehicle battery. Either fault condition in the vehicle electrical system can cause a no-charge condition in the printer battery.



Caution: *It is very important to ensure you make the correct connections to the power source, because electrical energy from a vehicle's power system can harm equipment and people.*

Caution: *If you need to jump start your vehicle from another vehicle battery, disconnect the power cable running to the RW 420 Route Solution. Failure to do so can result in damage to your mobile printer and/or the RW 420 Route Solution itself.*

The safety instructions in this guide do not detail every situation which could be dangerous. Common sense, caution and care should be exercised by the user or the person in charge of the maintenance service.



The voltage of the accessory power supply used in conjunction with the RW 420 Route Solutions to charge batteries is high enough to be dangerous. Maintenance and repair of electric and electronic parts must be carried out only by qualified technicians after considering all the necessary safety measures.

The standard RW 420 Route Solutions system is not designed to operate in environments with a potentially explosive atmosphere.



NOTE: *Zebra Technologies is not liable for personal injury or damage to any equipment caused by the improper installation of this equipment to any power source.*

Carefully read the electric data stated on the identification nameplate placed on the device. In case such plate is missing or unreadable, contact a Zebra authorized service provider.

The purpose of this guide is to explain how to use and install the RW 420 Route Solutions accessory kits by means of instructions, pictures and examples.

All the necessary operations are described in order to allow the correct installation and use of the RW 420 Route Solutions accessory kits.



NOTE: *Always consult the user documentation supplied for the printer, terminal and the RW 420 Route Solutions for more complete information on the operation of these components.*



Caution: *Non-qualified personnel should not handle or attempt repairs of any components of the RW 420 Route Solutions system.*

ACCESSORY KIT DESCRIPTIONS

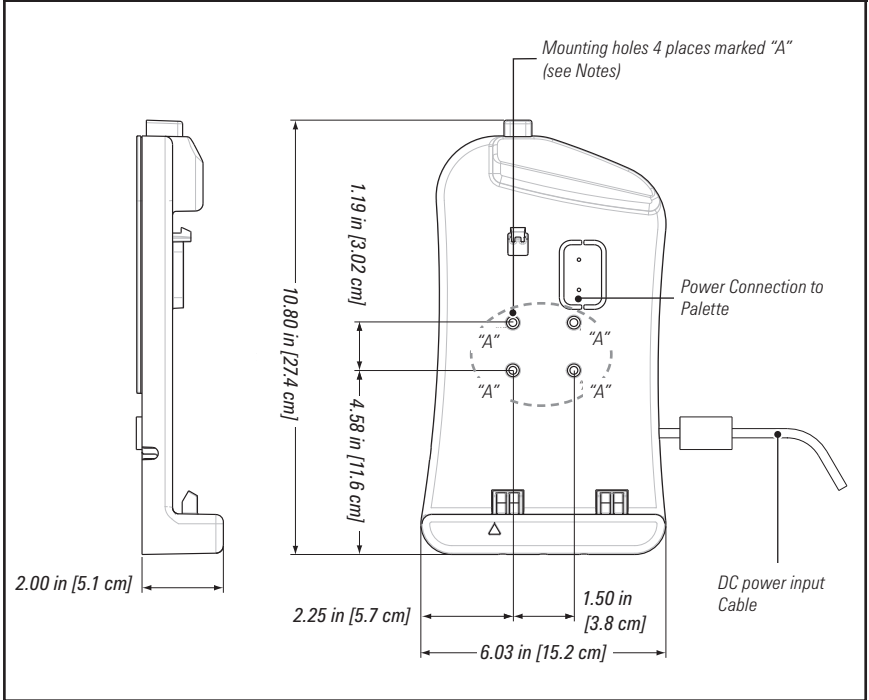
The RW 420 Route Solutions Accessory Kits are a set of assemblies and cables which extend the functionality and flexibility already built into the RW 420 Route Solutions. Battery recharging circuitry for terminal and printer and communications connections are mounted internally in the RW 420 Route Solutions. External power to charge the printer and terminal batteries is supplied by the family of optional accessories detailed in this manual. They allow the installer and user of the system to configure the RW 420 Route Solutions System to meet a variety of needs.

Refer to the table below for accessory order numbers and descriptions.

Route Palette Accessory Kit Order Numbers		
Order Number	Description	See pg. #
AK18822-1	RW 420 ROUTE SOLUTIONS VEHICLE CRADLE	7
AK17463-006	VEHICLE CHARGING CABLE, NO TERMINATION. MOLEX CONNECTOR	7
AK17463-007	VEHICLE CHARGING CABLE, CIGARETTE LIGHTER. MOLEX CONNECTOR	7
AK18865-1	KIT ACC RAM MOUNT PALETTE	13
AK18823-2	ROUTE SOLUTIONS 4 BAY POWER STATION	16
AK18828-1	2:1 CABLE FROM CRADLE TO AC ADAPTER	17
AK18474-001	KIT POWER STATION PS & CORD US (ROUTE PALETTE)	17
AK18474-005	KIT POWER STATION PS & CORD EU (ROUTE PALETTE)	17
AK18474-006	KIT POWER STATION PS & CORD UK (ROUTE PALETTE)	17
AK18913-002	KIT ACC P4T AC ADPTR NA (PRINT STATION)	17
AK18913-007	KIT ACC P4T AC ADPTR EU (PRINT STATION)	17
AK18913-006	KIT ACC P4T AC ADPTR UK (PRINT STATION)	17

THE RW 420 ROUTE SOLUTIONS VEHICLE CRADLE AK18822-1

Figure 1: RW 420 Route Solutions Vehicle Cradle



Description

The Route Solutions Vehicle Cradle provides a source of power to run and charge the RW 420 Route Solutions from the vehicle's electrical system. In all installations, the power cable is wired to the vehicle's battery power indirectly through a power take-off point.

DC power for the Route Solutions Vehicle Cradle is supplied from the vehicle's electrical system by one of two cable assemblies:

- The cigarette plug cable (p/n AK17463-007),
- The un-terminated power cable (p/n AK17463-006) which must be hard-wired into the vehicle's electrical system.



Notes: The mounting holes shown at four places "A" allow mounting to either a surface in the vehicle, or to the optional Flexible Arm (RAM) Mount (refer to page 13).

The orientation of the Route Solutions Vehicle Cradle as shown in Figures 1 and 2 will result in the Route Palette being mounted with its carrying handle facing up. As a consequence, the display on the terminal and the RW 420 will be "upside down" in relation to the user. The Vehicle Cradle may be oriented 180° from its illustrated position if the printer and terminal displays must be read by the user when installed in the Vehicle Cradle.

continued

INTRODUCTION TO VEHICLE CRADLE INSTALLATION

You will need the following :

- The RW 420 Route Solutions Vehicle Cradle (Zebra p/n AK18822-1)
- One of two types of power cables running between In-Vehicle Storage/Charging Module and the vehicle's power source:
Either the un-terminated, fused power input cable (Zebra p/n AK17463-006), or
The power input cable with a cigarette lighter adapter. (Zebra p/n AK17463-007) The adapter is internally fused.

CAUTION: There must be a fuse between the vehicle's power source and the input power cable connection! If you are not using the cables provided by Zebra for use with the RW 420 Route Solutions, selecting the size and rating of this fuse is the installer's responsibility. Do not replace the fuse on either of the power input cables with a fuse with a different power rating.

The Vehicle Cradle provides a source of power to run and charge the RW 420 Route Solutions from the vehicle's electrical system. In all installations, the power cable is wired to the vehicle's battery power indirectly through a power take-off point.

Since each situation or equipment type may pose unique requirements, mounting hardware selection and mechanical installation shall be the responsibility of the installer. Zebra recommends using self-locking (ESN) nuts, bolts, and/or lock washers for installing the mount.

Since the vehicle's electrical system is used to charge the entire RW 420 Solutions System, it is important that this system function properly and any vehicle-generated electrical "noise" must be minimized and within specifications.

The vehicle charging circuit must neither undercharge nor over-charge the vehicle battery. Defective ignition wiring, damaged insulation, or faulty vehicle electrical components can cause excess electrical noise severe enough to defeat the electrical filtering that is built into the Route Solutions system components.



NOTE: Hardware used to secure the Vehicle Cradle to the vehicle is not supplied in the kit. Recommended fasteners are #8-32 (4 mm) socket head bolts with flat washers, lock washers, nuts and/or locking nuts. You may optionally elect to drill and tap for a #8-32 or M4 screw.

POSITION THE VEHICLE CRADLE

Your tasks are to:

- Route and install the input power cable to the vehicle's power source
- Mechanically install the Vehicle Cradle.

Figure 2: RW 420 Route Palette Vehicle Cradle Mounting Dimensions

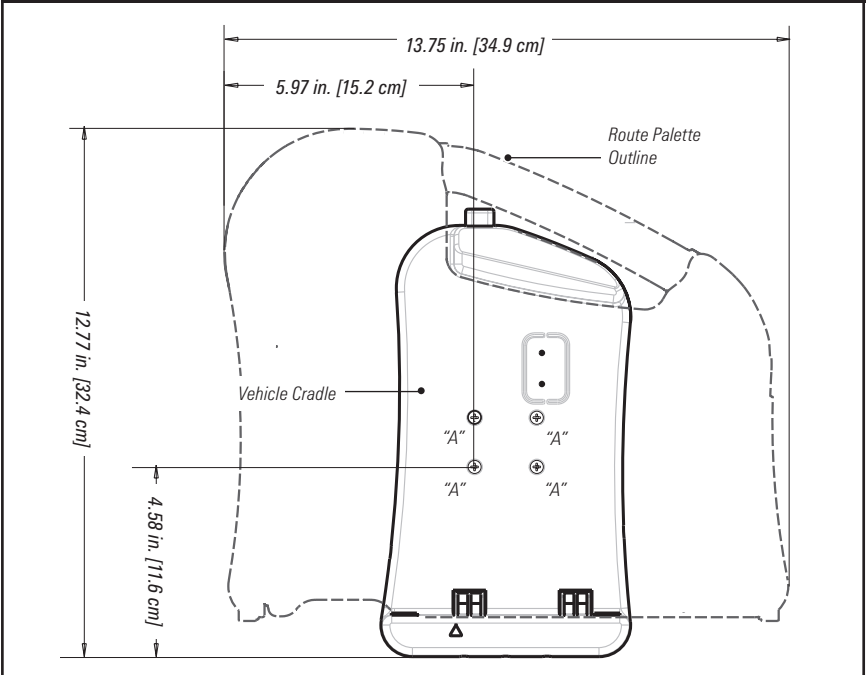
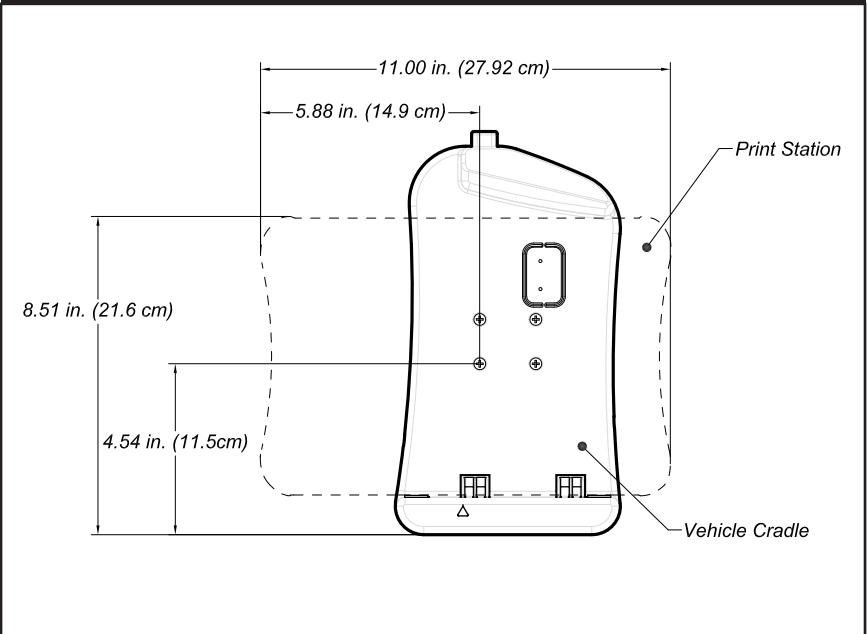


Figure 3: RW 420 Print Station Vehicle Cradle Mounting Dimensions



continued

- Prepare the RW 420 Printer and the Route Solutions for use.

Refer to Figures 1 and 2 and decide where you will mount the RW 420 Route Solutions and the Vehicle Cradle.

Always follow the Safety Guidelines at the beginning of this manual when deciding on the location of the Vehicle Cradle and the RW 420 Route Solutions.



CAUTION: *Locate the RW 420 Route Solutions system in the vehicle so that it will avoid contact with the operator in case of an accident.*

Refer to Figures 1 and 2 for Vehicle Cradle mounting dimensions. Recommended fasteners for the Mobile Charger are #8-32 [M4] bolts, flat washers and lock washers.



CAUTION: *Splicing onto the input power cable is not recommended. Voltage drops encountered across splices and other discontinuities may reduce power to the Route Solutions to an unacceptable level.*

INSTALLATION GUIDELINES

Follow the guidelines below and all other safety instructions when installing the Input Power cables.



CAUTION: *Ensure that the input power cable you are using is labeled as appropriate for use with the vehicle's electrical system.*



NOTES: *1. It is the installer's responsibility to ensure correct wiring and installation.*

2. Zebra is not liable for damage to any equipment caused by improper installation or wiring of the Vehicle Cradle, or damage resulting from use of the wrong Vehicle Cradle for the intended application.

3. Do not lengthen the input power cable. Extending the cable will affect the systems's reliability and radio frequency interference (RFI). Do not attach any ground wires to the Vehicle Cradle housing.

4. Use care when attaching the converter's power cable to the power source. The red wire attaches to the positive (+) terminal and the black wire to the negative (-) terminal. If wired backwards, the Vehicle Cradle and/or the Route Solutions could be rendered inoperable and will need to be sent to an authorized service provider for repair.

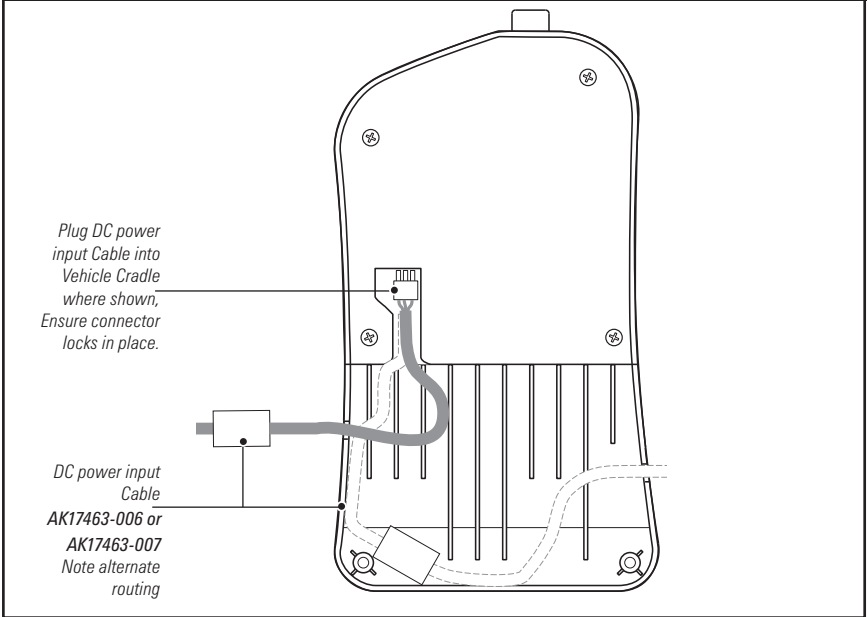


CAUTION: *High voltages may be present. Always disconnect the vehicle's primary battery before installing any Route Solutions system component.*

- Completely install the input power cable before connecting the unit(s).
- Route the Input Power cable from the general area where the unit(s) will be mounted.
- Use a snap-in bushing if the Input Power cable passes through the vehicle's fire wall or other sheet-metal barriers.
- Ensure that cable routing does not interfere with other equipment or vehicle controls.

- Make sure that cable routing does not invite damage to the cable.
- Secure the Input Power at least every 12 inches [30 cm] throughout the cable run.

Figure 4: Routing the RW 420 Route Solutions Vehicle Cradle Input Power Cables



INPUT POWER CABLE INSTALLATION

Connection To Power Source With Un-Terminated Cable

You must cut the cable to length and strip the individual wire ends of the cable. Finally, you must complete the connections to the vehicle power source. The installer must find the nearest practical connection point to the main battery's voltage. It may be possible to use internal wiring supplied in the vehicle, but only if the wire gauge is equal to or greater than 18 AWG.

CAUTION: There must be a fuse between the vehicle's power source and the input power cable connection!

The capacity of the fuse between the vehicle's power source and the charger should not exceed 2.2A. Consult the vehicle manufacturer or a dealer to determine the best power connection location.



NOTE: Actual cable termination used must be compatible with the power source. The following is only a guideline.

continued

1. Cut the RED wire as near the power source as practical
2. Cut the BLACK wire to length to the nearest practical chassis ground.
3. Strip 1/4" (6 mm) of insulation from the BLACK wire.
4. Securely crimp a 3/8" terminal ring onto the BLACK wire.
5. Strip 1/4" (6 mm) of insulation from the RED wire.
6. Securely crimp a 3/8" terminal ring onto the RED wire.
7. Ensure that cable terminals are well connected to the cable.
8. Connect black cable ground (-) terminal to vehicle ground location.
9. Connect red cable power (+) terminal to vehicle power source.

Connection To Power Source With Cigarette Adapter Cable

No input power cable preparation is necessary. Plug the cigarette lighter adapter into the vehicle's cigarette lighter power socket. The appropriate protective fuse is integrated with the adapter.

CAUTION: Do not attempt to replace this fuse with a higher amperage fuse. Damage to the charger and/or the printer may result.

SECURING THE POWER CABLE

Secure the Input Power every 12 inches (30 cm) with adjustable cable clamps or nylon wire wraps. Make sure that the cable routing does not interfere with other equipment or vehicle controls. Ensure that the cable routing protects the cable from damage during vehicle use.

INSTALL THE VEHICLE CRADLE

Vehicle Cradle Location

Locate the Vehicle Cradle in a location that allows convenient access to the system. Follow these guidelines:

- Allow adequate clearance for the removal and replacement of the RW 420 Route Solutions on the Vehicle Cradle. Refer to Figures 1 and 2 for mounting and installation dimensions .
- The Route Solutions Vehicle Cradle can also be mounted via a flexible arm assembly (Zebra p/n AK18865-1) This option is covered in the following section of this manual.
- Locate the Vehicle Cradle and the RW 420 Route Solutions so that it will avoid contact with the vehicle operator in case of an accident.
- Make sure that cable routing does not invite damage to the cable.
- Plug the power input cable into the mating plug on the

Vehicle Cradle. Use the cable retention features on the bottom of the charger and holder module to route the power input cable's exit from the module. Note that two possible routings of the input power cable are available depending on your installation requirements.

A 5 Ampere, 250 Volt, Type 322 fuse is integrated with the adapter.

- Secure the vehicle cradle with #8 [4 mm] hardware where indicated in Figure 2 at "A". Ensure that the mounting hardware will not become loose due to vibration by using locking hardware or prevailing torque fasteners.
- Some models of the RW 420 printer may have a Magnetic Strip Card reader and a SmartCard reader installed. If these features are to be used when the printer is installed on the Route pallette, it must be located so that the operator will have clear access to the reader's slots for these cards. Refer to the RW 420 Users Guide for more information on the use of these features.



Always refer to the Safety, Installation and Use Guide (UMAN-RW4RP-101 or UMAN-RW4P-103) included with the RW 420 Route Solutions for complete information on the use of the RW 420 Route Solutions system.

MOUNTING ARM KIT AK18865-1

Description

The optional mounting arm is offered for use with the Route Solutions Vehicle Cradle. This kit provides a more versatile method of positioning the RW 420 Route Solutions system. The mounting arm consists of an arm with a ball and socket joint at either end, which in turn are terminated with a mounting flange. One flange is secured to the Route Solutions Vehicle Cradle by the four mounting holes provided on the bottom plate, and the other is secured to the desired mounting surface. A clamp on the arm locks the Cradle in the desired position.

Mounting Arm Installation

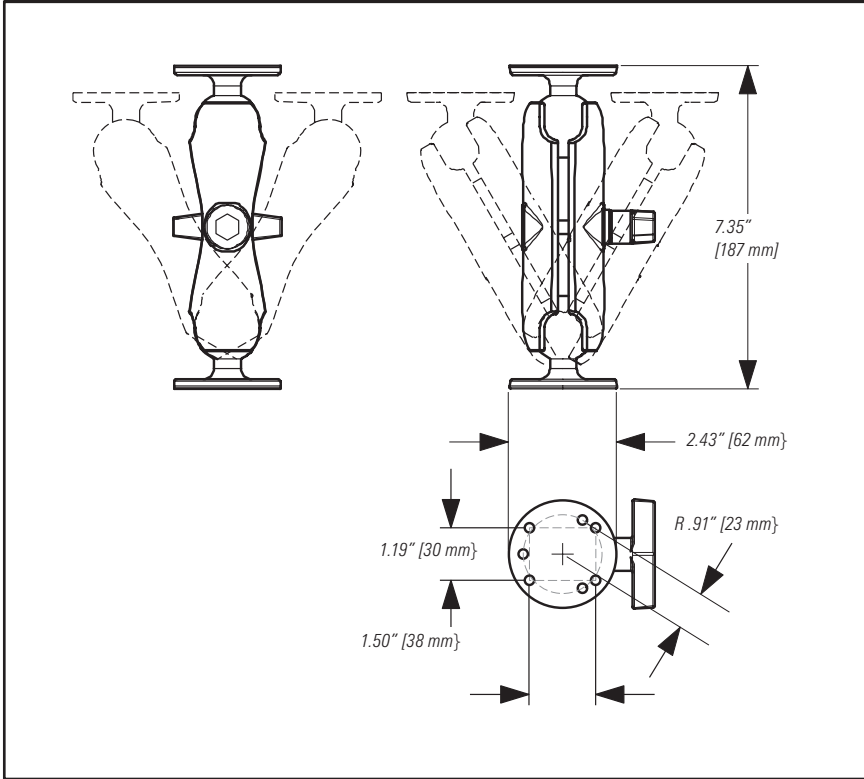


CAUTION: Mount the Route Solutions and Route Solutions Vehicle Cradle where it will not hit the operator in case of an accident.



Warning: Do not connect the input power cable to the Route Solutions Vehicle Cradle until the Cradle and Mounting Arm installation have been completed.

Figure 5: Mounting Arm Kit Dimensions



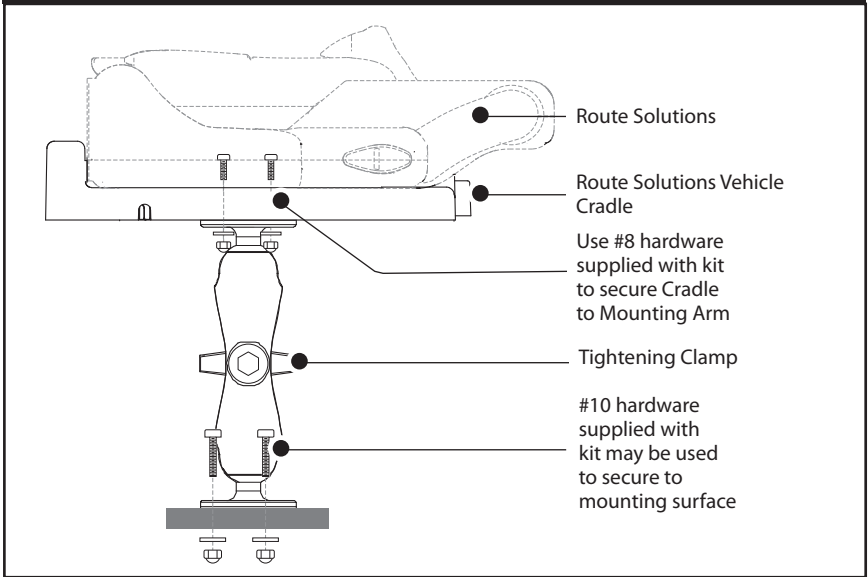
For ease of installation, the Arm can be disassembled by loosening the clamp enough to remove the two ball and socket flanged ends. These end flanges can then be easily secured to the Route Solutions Vehicle Cradle and the desired mounting surface. Then the arm can be slipped over the two ball ends and the clamp tightened to secure the Cradle in position.

When installing the mounting arm, remember that it provides a considerable range of movement for the Vehicle Cradle and Printer. Extra clearance should be provided for this movement if it is desired in the installation.

Mounting Hardware

Mounting hardware is supplied with the Mounting Arm Kit. The #8-32 hardware (screws, washers and nuts) supplied with this kit should be used to secure one end of the arm to the bottom of the Route Solutions Vehicle Cradle at the four mounting holes marked "A" in figure 2. The #10-24 x 3/4" Screws and associated hardware may be used to secure the other end of the arm to the desired mounting surface.

Figure 6: Securing the Vehicle Cradle to the Mounting Arm



Vehicle Cradle Preparation

Refer to the section on Route Solutions Vehicle Cradle preparation earlier in this section for more specific information on securing the input power cable. Locate the Mounting Arm so when installed with the RW 420 Route Solutions system the operator can easily load printing media, operate the printer's controls and perform routine maintenance such as cleaning the printhead. Follow these guidelines:

1. Select a location in the vehicle that will avoid personal contact in case of an accident.
2. Plug the input power cable into the bottom of the Cradle.
3. Be sure to leave enough slack in the power cable to allow the Mounting Arm to pivot freely without putting strain on the power connections.
 - Make sure that the input power cable routing does not invite damage to the cable when the Vehicle Cradle is pivoted.

Input Power Completion

Route the input power cable per the earlier section in this Guide: "Input Power Cable Completion."

THE ROUTE SOLUTIONS 4-BAY POWER STATION AK18823-1

Figure 7: 4-Bay Power Station (Route Palette mounting shown) p/n AK18823-1 Module As Shipped

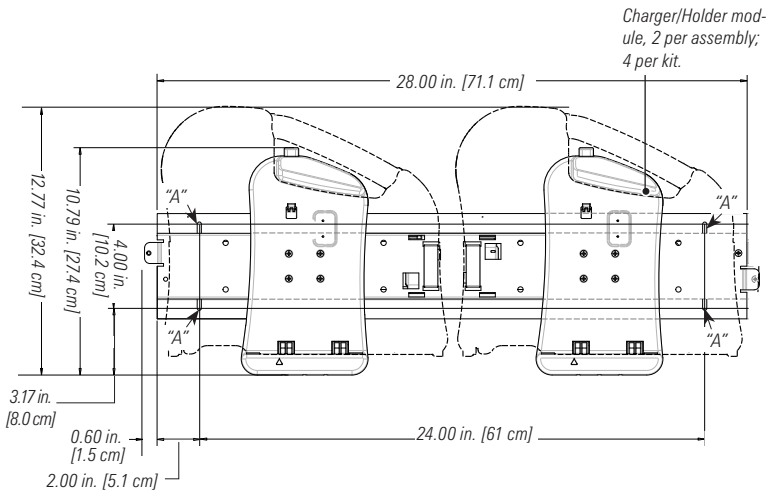
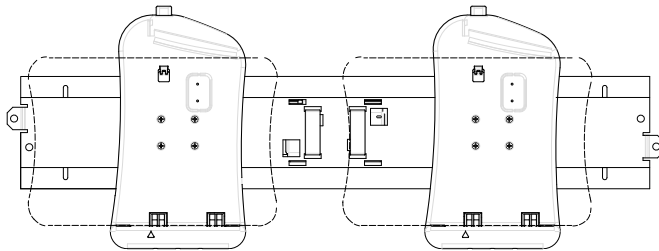


Figure 8: 4-Bay Power Station (Print Station mounting shown) p/n AK18823-1 Module As Shipped



Bracket dimensions refer to Figure 7.

INSTALLATION

Introduction

The Route Solutions 4-Bay Power Station is shipped as two pre-assembled and pre-wired modules, as shown in Figure 7 and Figure 8. They can be mounted on the same 4-bay Power station. These two modules are designed to be arranged end to end, as shown in Figure 9 and Figure 10. Since they are mechanically and electrically self-contained they may also be arranged as necessary in other configurations, depending on the installation requirements and the space available.

continued

Installation Options

Each module is intended to be secured at the four points marked "A". Due to the variety of wall surfaces that may be encountered when this kit is installed, mounting hardware is not supplied with these kits. It is important for the installer to select the correct hardware that will support the both weight of the weight of the charging module assembly and the load of installing and removing the RW 420 Route Solutions.

Prior to installing the Route Solutions 4-Bay Power Station, you must install the proper A.C. Power cord appropriate for your region. Each AC cord in the following table will have one AC input plug and two output receptacles that will plug into the power supplies already installed on the 4-Bay Power Station modules as shipped. Plug these receptacles into each of the power supplies and arrange the cables in the mounting channels so that they will not be pinched or crushed when the channels are secured.

Available AC Power Cables for the Route Solutions 4-Bay Power Station	
Order Number	Description
AK18474-001	KIT POWER STATION PS & CORD US (ROUTE PALETTE)
AK18474-005	KIT POWER STATION PS & CORD EU (ROUTE PALETTE)
AK18474-006	KIT POWER STATION PS & CORD UK (ROUTE PALETTE)
AK18913-002	KIT ACC P4T AC ADPTR NA (PRINT STATION)
AK18913-007	KIT ACC P4T AC ADPTR EU (PRINT STATION)
AK18913-006	KIT ACC P4T AC ADPTR UK (PRINT STATION)



NOTES: 1. The selection of correct mounting hardware and power cord used with the 4-Bay Power Station kit is the responsibility of the installer.

2. The internal cable connecting the DC output of the power adapter to (2) Vehicle Cradles is installed as part of the 4-Bay Power Station modules as shipped. In case of damage during installation it may be ordered separately as p/n AK18828-1.

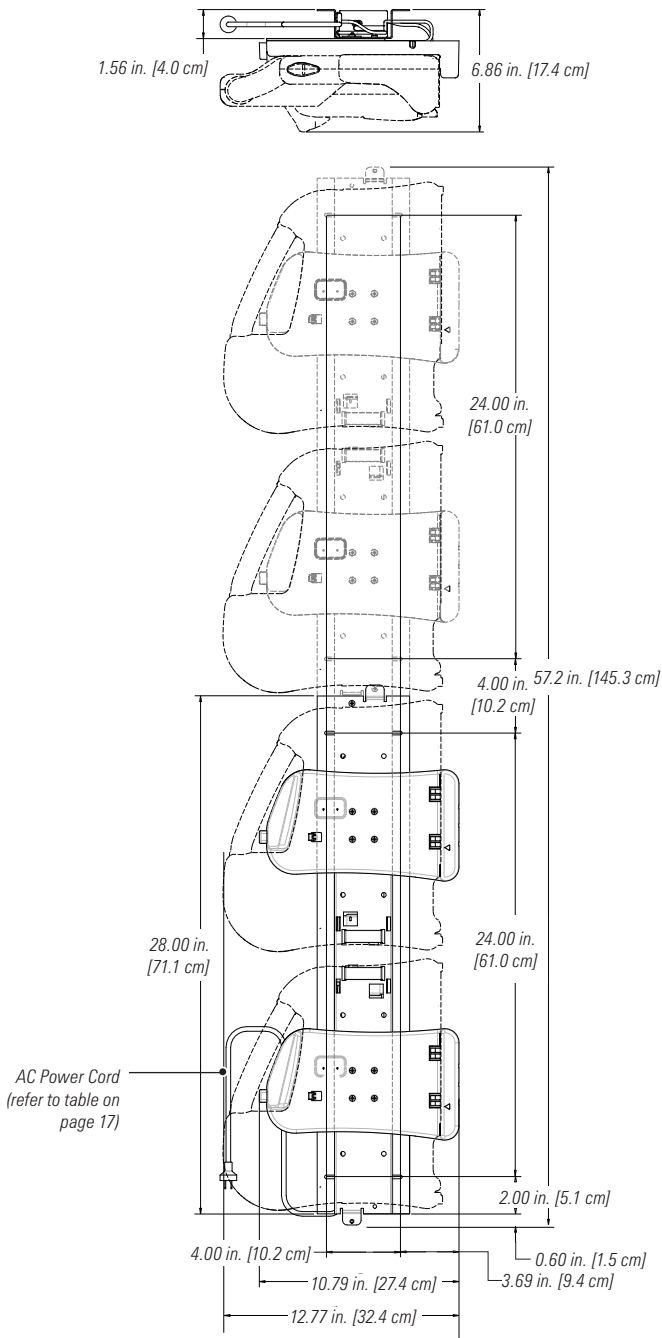
USE OF THE ROUTE SOLUTIONS 4-BAY POWER STATION

The Route Solutions 4-Bay Power Station system allows the simultaneous charging of up to four RW 420 Route Solutions Systems. Its intended use is for the overnight charging of multiple route solutions systems in preparation for their use on the next work shift. Refer to the Route Solutions Manual for complete information on charging functions and indicators.

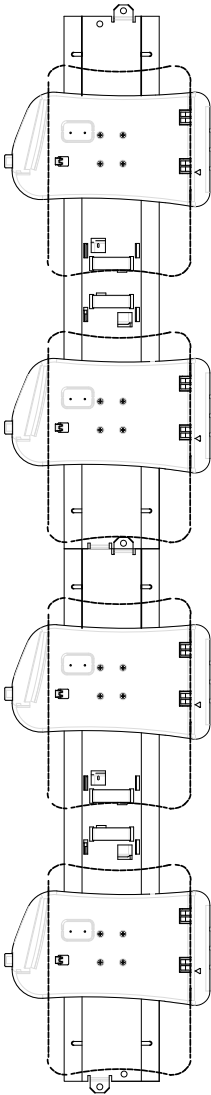
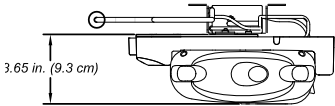
You must ensure that the AC circuits used to power the 4-Bay Route Solutions Power Station have adequate capacity to power your 4-Bay Power Station installation, and that the power will not be turned off if overnight charging is intended.

continued

**Figure 9: RW 420 Route Palette 4-Bay Power Station/
Docking Kit- Installation Dimensions**



**Figure 10: RW 420 Print Station 4-Bay Power Station/
Docking Kit- Installation Dimensions**



Bracket dimensions refer to Figure 9 and Figure 7.

PRODUCT SUPPORT CONTACTS

In the Americas contact

Regional Headquarters	Technical Support	Customer Service Dept.
Zebra Technologies Corporation 475 Half Day Road, Suite 500 Lincolnshire, IL 60069, U.S.A T: +1 847 634 6700 Toll-free +1 800 423 0422 F: +1 847 913 8766	T: +1 847 913 2259 F: +1 847 913 2578 Hardware: ts1@zebra.com Software: ts3@zebra.com	For printers, parts, media, and ribbon, please call your distributor, or contact us. T: +1 877 ASK ZEBRA (275 9327) E: clientcare@zebra.com

In Europe, Africa, the Middle East, and India contact

Regional Headquarters	Technical Support	Internal Sales Dept.
Zebra Technologies Europe Limited Dukes Meadow Millboard Road Bourne End Buckinghamshire, SL8 5XF, UK T: +44 (0) 1628 556000 F: +44 (0) 1628 556001	Self Service Knowledgebase: www.zebra.com/knowledgebase E-mail Back Technical Library: Send e-mail to: emb@zebra.com Subject: Emallist On-Line case registration: www.zebra.com/techrequest	For printers, parts, media, and ribbon, please call your distributor, or contact us. T: +44 (0) 1494 768316 F: +44 (0) 1494 768244 E: mseurope@zebra.com

In the Asia Pacific region contact

Regional Headquarters	Technical Support	Customer Service
Zebra Technologies Asia Pacific, LLC Go to www.zebra.com/contact for complete contact information. T: +65 6858 0722 F: +65 6885 0838	T: +65 6858 0722 F: +65 6885 0838 E: tsasiapacific@zebra.com	For printers, parts, media, and ribbon, please call your distributor, or contact us. T: +65 6858 0722 F: +65 6885 0837



Zebra Technologies Corporation

475 Half Day Road, Suite 500
Lincolnshire, IL 60069, U.S.A

 Printed on
chlorine-free
recycled paper.