

## PRODUCT BRIEF

Intel® Compute Stick  
STK2MV64CC  
STK2M3W64CC  
STK2M364CC



# INTEL® COMPUTE STICK: BUILT TO PERFORM, DESIGNED TO FIT

Get ready for amazing

**The Intel® Compute Stick is a tiny device the size of a pack of gum that can transform any HDMI\* TV or display into a complete computer.**

But it's what's inside that's really incredible: an Intel® Core™ M processor or an Intel® Core™ M vPro™ processor for the performance you need to create brilliant presentations with graphics, create analytics models on a spreadsheet, or drive 4K digital signage.

Just plug the Intel® Compute Stick into any HDMI\* TV or monitor, connect your wireless keyboard and mouse and you're ready to go. You can even use the Intel® Remote Keyboard app to control your device through your phone or tablet. The built-in Wi-Fi and on-board storage enables you to be productive immediately. There's also Bluetooth\* 4.2 so you can connect your wireless peripherals and cut the cords, not the performance.

Designed and optimized to take advantage of the performance of the Intel Core M processor for home, business, and PC-like embedded applications, the Intel Compute Stick is a tiny computer with full-size performance, reliability, and ease of use that lets you work better wherever your day takes you. The Intel Compute Stick has the quality and value you've come to expect from Intel in a product designed and built by the company itself.





**STK2MV64CC**

**Your system is reliable and your data is safe with the Intel® Core™ m5 vPro™ processor**

The Intel Compute Stick with the Intel Core m5 vPro processor is ideal for thin client, embedded, healthcare, or digital kiosks where data security, reliability, and remote manageability are crucial. The Compute Stick makes it easy to stay productive whether you're working in a patient room, collaborating in a conference room, or moving from desk to desk in the workplace. 64 GB of onboard storage and a micro SD slot means that no matter where you go, you can carry crucial business files with you. It's also easy to access apps and data in the cloud via the built-in Intel® 802.11ac wireless, Intel's fastest wireless available today. And with built-in Bluetooth 4.2, you can connect wireless peripherals or easily transfer files and media from your smartphone or tablet<sup>1</sup> to the Compute Stick's on-board storage. Finally, there are three USB 3.0 ports so you can attach the peripherals you need.

With the additional download of Intel® Unite™ software, you can plug the STK2MV64CC into a conference room display or projector and create a simple and powerful collaboration experience. Intel Unite allows all meeting participants to connect seamlessly to the Intel Compute Stick with no cables needed. Both on-site and remote workers can easily view and interact with the shared content real time. And the hardware-enhanced security of the Intel Compute Stick ensures that all data is 256-bit Secure Sockets Layer (SSL) encrypted and stays within your network.



**STK2M3W64CC and STK2M364CC**

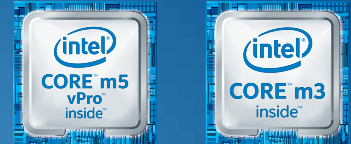
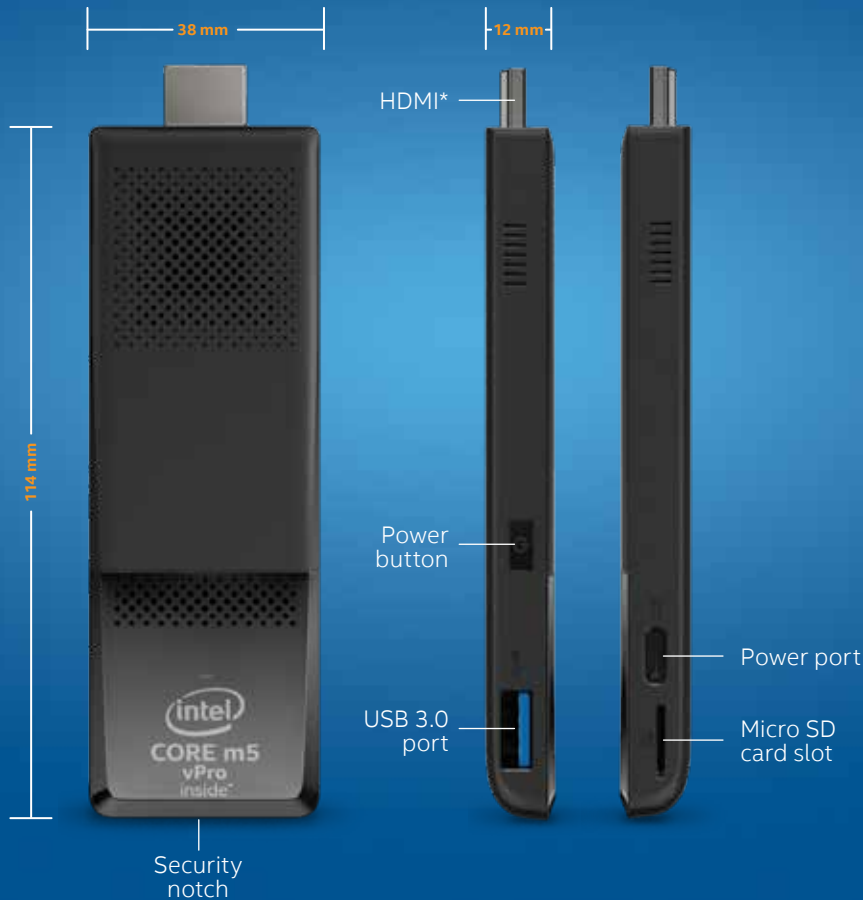
**A fast, efficient, and quiet system built with the Intel® Core™ m3 processor**

The Intel Compute Stick offers you the choice of Windows® 10 pre-installed or no OS installed for greater flexibility. Built with the Intel® Core™ m3 processor the world's first processors built on 14 nm manufacturing process technology, the Intel Compute Stick has the perfect balance of performance and efficiency to keep you productive all day long.

Pre-installed with Windows 10, the Intel Compute Stick STK2M3W64CC gives you the performance you need to stream media, edit photos and files, or create projects. With 64 GB of on-board storage and a micro SD card slot, you can store your files locally for quick access. There's also Intel® Dual Band Wireless AC 8260, so you can connect out-of-the-box and access files in the cloud, along with built-in Bluetooth 4.2 so you can hook up wireless peripherals or easily transfer pictures from your smartphone<sup>1</sup> to the Compute Stick's on-board storage. And with three USB 3.0 ports,<sup>2</sup> you can use a USB keyboard and mouse, and still have room for additional devices, such as an Intel® RealSense™ Camera or an Ethernet adapter.

The Intel Compute Stick STK2M364CC is perfect for commercial clients with optimized performance for productivity, digital signs, kiosks, or thin client installations. It comes without an operating system so you can choose the OS that best meets your needs—from Linux\* to Windows\*. And with the Trusted Platform Module, you have the extra assurance of knowing that you've got hardware-based security that keeps systems more secure from external software-based attacks or physical theft.

# INTEL® COMPUTE STICK FEATURES



Intel® Core™ m5 vPro™ processor or  
Intel® Core™ m3 processor

TPM included on  
STK2MV64CC and STK2M364CC

4K support

Onboard storage

Onboard memory

Intel® Dual Band Wireless AC 8260

Bluetooth\* 4.2

HDMI\* extension cable

Power cable and adapter with  
2 USB ports

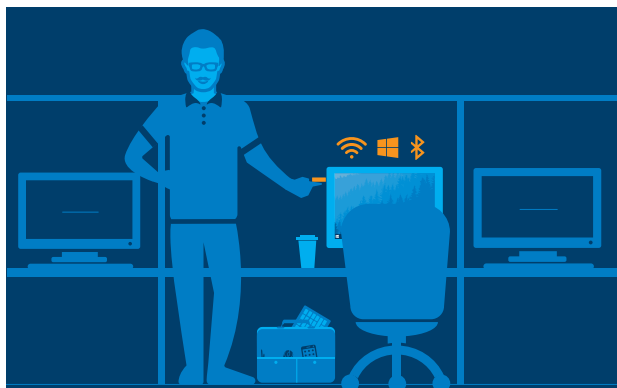
## Optimized design for full performance

Intel relentlessly innovates to bring you technology that helps you meet your computing needs. The innovative design of the Intel Compute Stick is fully optimized to allow you to maximize your productivity. Additionally, Intel® vPro™ technology<sup>3</sup> offers the security and manageability you need for embedded and enterprise applications. At home or in the office, the Intel Compute Stick is simply a better way to work.

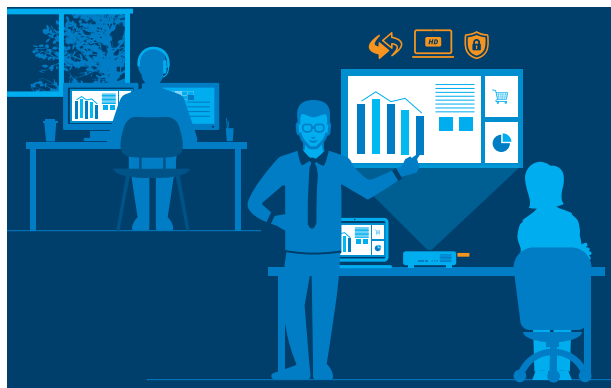
**Intel Compute Stick.**  
**Connect. Compute. It's that simple.**

Look for Intel® Compute Stick  
with Intel Inside® at  
[www.intel.com/ComputeStick](http://www.intel.com/ComputeStick)

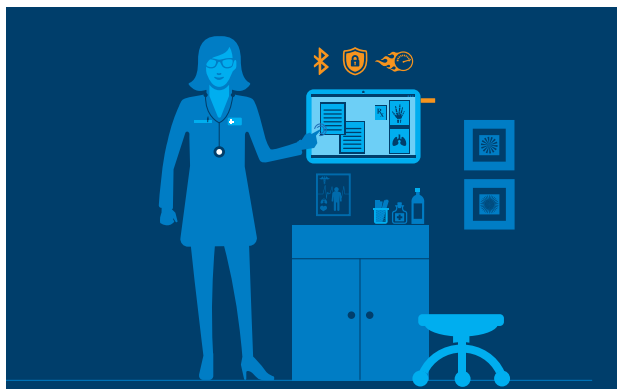
## Intel® Compute Stick Usage Models



**MOBILE WORKER**



**OFFICE CONFERENCE (INTEL® UNITE™ SOFTWARE)**



**HEALTHCARE KIOSK**

## TECHNICAL SPECIFICATIONS

Intel® Compute Stick STK2MV64CC, STK2M3W64CC, and STK2M364CC

### PROCESSOR

- Intel® Core™ m5-6Y57 vPro™ processor
- Intel® Core™ m3-6Y30 processor

### GRAPHICS

- Intel® HD Graphics
- HDMI\* 1.4 B

### SYSTEM MEMORY

- 4 GB total DDR3 1866 MHz dual channel memory
- 2 GB per channel

### STORAGE CAPABILITIES

- 64 GB eMMC device built-in
- SDXC v3.0 slot with UHS I-Support

### PERIPHERAL CONNECTIVITY

- Integrated Intel® 802.11ac wireless (Intel® Dual Band Wireless AC 8260)
- One USB 3.0 on device and two USB 3.0 on power adapter
- Bluetooth\* 4.2
- Micro SD card slot (up to 128 GB)

### AUDIO

- Intel® HD Audio<sup>3</sup> via HDMI, supporting multi-channel digital audio

### MECHANICAL CHASSIS SIZE

- 114 mm x 38 mm x 12 mm

### PRE-LOADED OS

- N/A (STK2MV64CC and STK2M364CC)
- Windows® 10 (STK2M3W64CC)

### POWER REQUIREMENTS

- Power cable
- 5V, 4A wall-mount AC-DC power adapter with 2 USB 3.0 ports

### ENVIRONMENT OPERATING TEMPERATURE

- 0° C to +35° C

### STORAGE TEMPERATURE

- -40° C to +60° C

<sup>1</sup> Bluetooth file transfer is not supported by all operating systems and is dependent upon phone or tablet capabilities.

<sup>2</sup> One USB 3.0 port is on the device. Two USB 3.0 ports are on the power adapter.

<sup>3</sup> Intel technologies' features and benefits depend on system configuration and may require enabled hardware, software or service activation. Performance varies depending on system configuration. No computer system can be absolutely secure. Check with your system manufacturer or retailer or learn more at [www.intel.com](http://www.intel.com).

INFORMATION IN THIS DOCUMENT IS PROVIDED IN CONNECTION WITH INTEL® PRODUCTS. NO LICENSE, EXPRESS OR IMPLIED, BY ESTOPPEL OR OTHERWISE, TO ANY INTELLECTUAL PROPERTY RIGHTS IS GRANTED BY THIS DOCUMENT. EXCEPT AS PROVIDED IN INTEL'S TERMS AND CONDITIONS OF SALE FOR SUCH PRODUCTS, INTEL ASSUMES NO LIABILITY WHATSOEVER, AND INTEL DISCLAIMS ANY EXPRESS OR IMPLIED WARRANTY, RELATING TO SALE AND/OR USE OF INTEL PRODUCTS INCLUDING LIABILITY OR WARRANTIES RELATING TO FITNESS FOR A PARTICULAR PURPOSE, MERCHANTABILITY, OR INFRINGEMENT OF ANY PATENT, COPYRIGHT, OR OTHER INTELLECTUAL PROPERTY RIGHT.

Intel products are not intended for use in medical, life-saving, or life-sustaining applications. Intel may make changes to specifications and product descriptions at any time, without notice. All products, dates, and figures specified are preliminary based on current expectations, and are subject to change without notice. Availability in different channels may vary. Actual Intel® Compute Stick may differ from the image shown.

Copyright © 2015 Intel Corporation. All rights reserved. Intel, the Intel logo, Intel Inside, the Intel Inside logo, Intel Experience What's Inside, the Intel Experience What's Inside logo, Intel vPro, Intel Unite, Intel RealSense, and Intel Core are trademarks of Intel Corporation in the U.S. and/or other countries.

\*Other names and brands may be claimed as the property of others. 1215/BCP/HBD/PDF

333174-002US