

EN

SwannEye HD Plug & Play Wi-Fi Security Camera Quick Start Guide

Welcome!
Lets get started.



1

Introduction



Congratulations on your purchase of this SwannEye HD Plug & Play Wi-Fi Security Camera from Swann!

This quick start guide will familiarize you with the features and functionality of your camera and walk you through the basics of:

- **Connecting the camera to your network**

How to connect the camera to your wired or wireless network

- **Using the SwannEye HD software/mobile app**

How to install the SwannEye HD software/mobile app on your computer and mobile device, and create an account to access and control the camera.

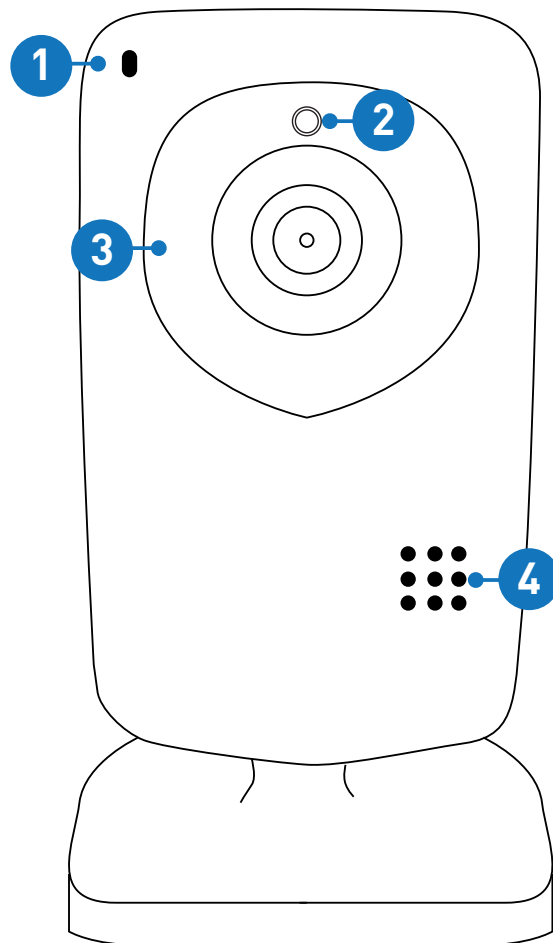


Before installing anything permanently, connect everything up and test the camera - just to make sure nothing was damaged during shipping!

2

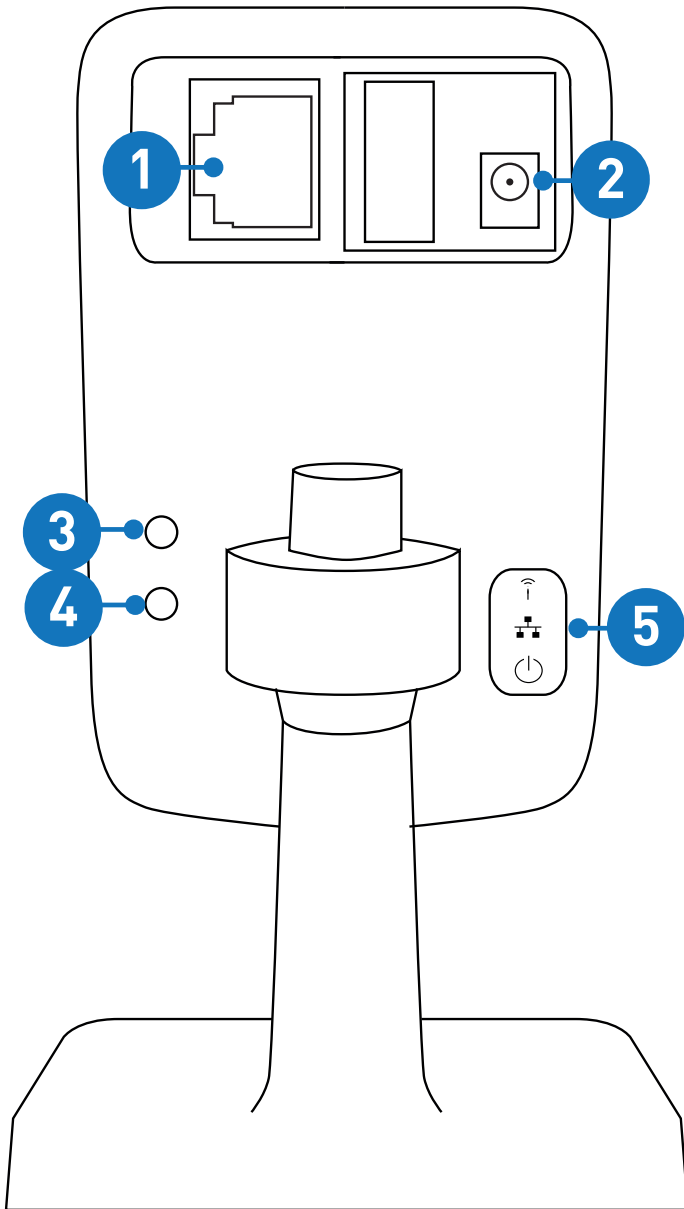
Getting to Know the Camera

Front View



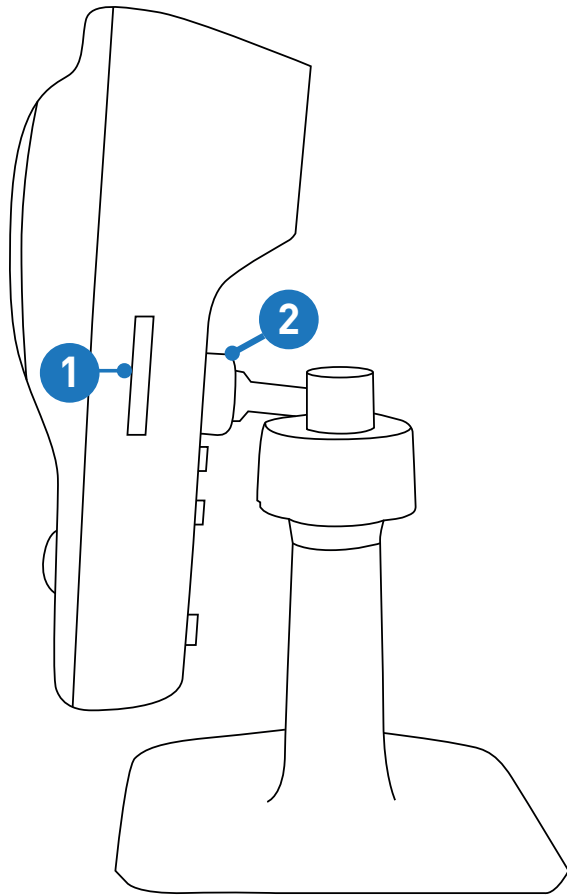
1. **Microphone** - Allows the camera to hear nearby sounds and stream them with the video.
2. **Light Sensor** - Detects the amount of incoming light and turns on the IR LEDs for night vision when necessary.
3. **Infrared (IR) LEDs** - Illuminates targeted areas when in near-total darkness.
4. **Speaker** - The various alerts and alarms will be heard from here.

Back View



1. **Ethernet Port** - For a wired connection, connect this to a spare port on your wireless router.
2. **Power Connector** - For connecting the supplied power adapter.
3. **Reset Button** - Press and hold while disconnecting and reconnecting the power supply to reset the camera's settings to factory defaults.
4. **WPS Button** - For connecting wirelessly to a WPS-enabled router.
5. **LED Indicators** - These display the current status of the camera.
 - **Wi-Fi LED** - Lights up when the camera is connected to your Wi-Fi network.
 - **LAN LED** - Lights up when the camera is connected to your network using the Ethernet cable.
 - **Power LED** - Lights up when the camera is connected to power and switched on.

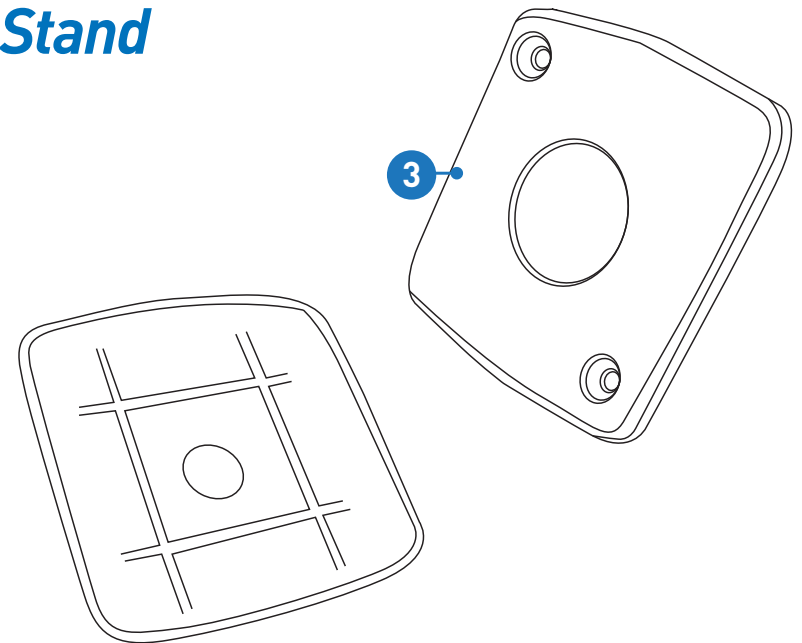
Side View



1. **Micro-SD Card Slot** - Inserting a Micro-SD card allows you to capture snapshots and record videos directly to the card. This is optional and is recommended for advanced users only.
2. **Bracket Mount** - Attach the supplied camera stand here.

3. **Mounting Plate** - Underneath the camera stand is a mounting plate. You can use this to mount the camera to a wall or ceiling.

Stand

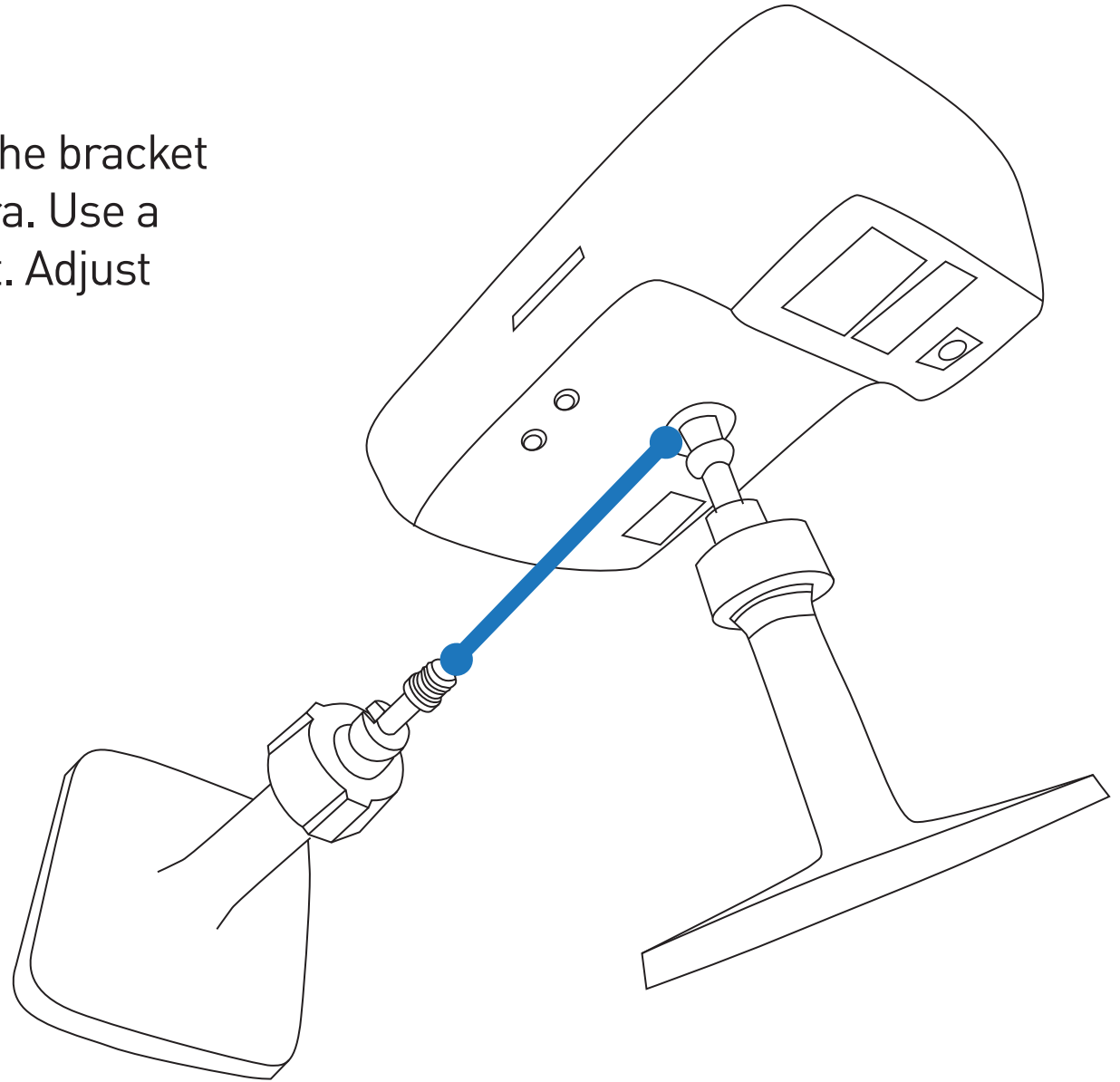


3

Installing the Camera

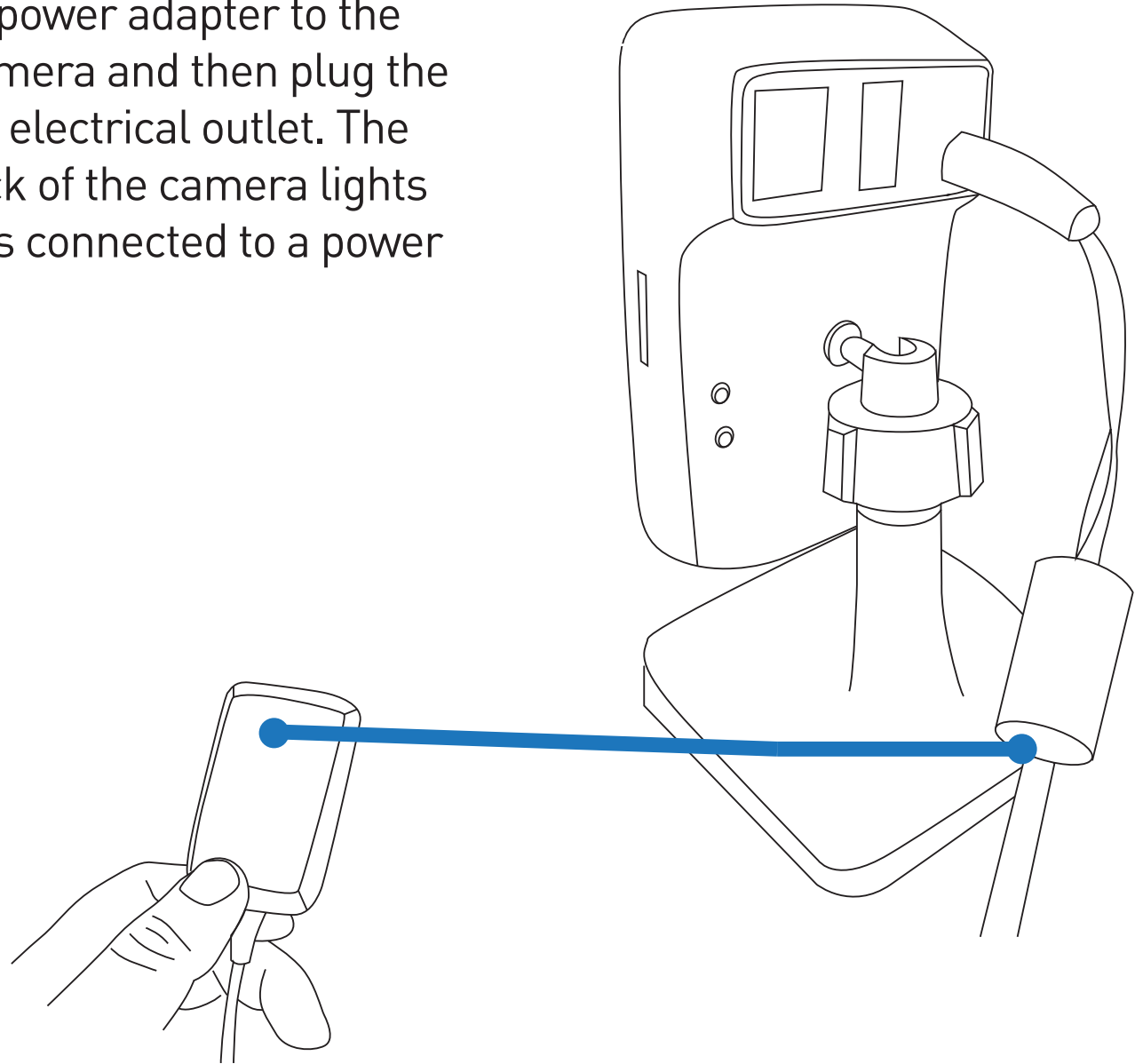
A

Screw the camera stand to the bracket mount located on the camera. Use a clockwise motion to connect. Adjust the stand accordingly.



B

Connect the supplied power adapter to the power input on the camera and then plug the power adapter into an electrical outlet. The Power LED on the back of the camera lights up when the camera is connected to a power source.



4

Connecting to your Network

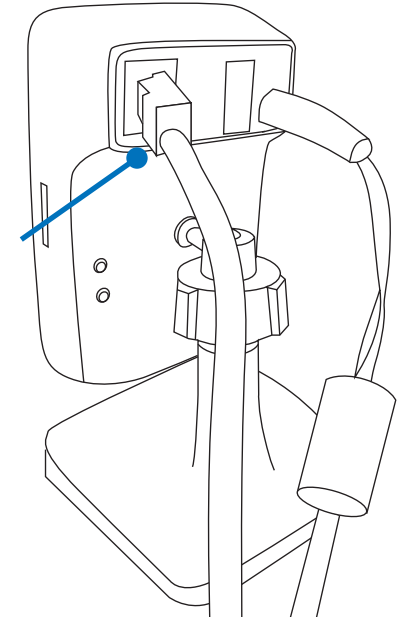
Wired Network:


Connect the camera's Ethernet port to any available port on your wireless router using the supplied Ethernet cable (see opposite). Make sure the computer that you want to use to configure and/or access the camera is connected to the same router.

Wireless Network:

If your wireless router supports Wi-Fi Protected Setup (WPS), you can easily create a WPS connection to the camera. WPS is a way of securely connecting devices to a wireless network without all that fussing about with IP addresses or security keycodes. To create a WPS connection:

1. Press and hold the WPS button on the back of the camera until the blue Wi-Fi LED indicator starts blinking.
2. Press the WPS button on your router. This button is located in different places on different routers - some might require that you press and hold the button and others might only need a momentary press. Check your router's documentation for assistance. The camera will automatically create a wireless connection to your router and once this connection is established, the Wi-Fi LED indicator will steady.



 *If your router doesn't support WPS and you want to connect wirelessly then that's ok, just connect the camera to your home network through the Ethernet cable and then configure camera's Wireless Network settings in the SwannEye HD Pro software. For additional information, see the SwannEye HD instruction manual.*

5

Installing SwannEye HD Pro Software



SwannEye HD Pro is designed to enable you to easily access and control your camera that's connected on your home network from your computer.

All you have to do to get started is to download and install the software from www.swanneye.com then register for an account using the '**Device No:**' and '**Verification No:**' which are printed on the sticker on the back of the camera.

After you've set up a new account, you will be able to watch live video feeds from your camera, simultaneously record and playback videos you have just taken while your current recording continues uninterrupted and also configure various aspects of your camera such as video/audio settings, wireless network and alarm.

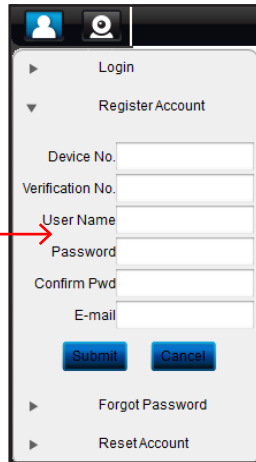
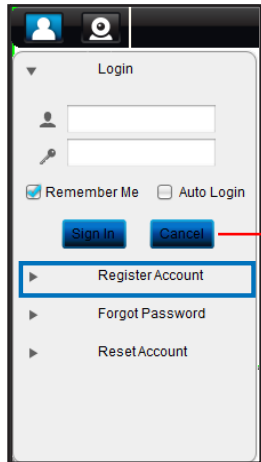


SwannEye HD is also available for Android and iPhone smartphones. Download this app for free from the Apple App Store or Google Play Store and start watching your camera anywhere, anytime!

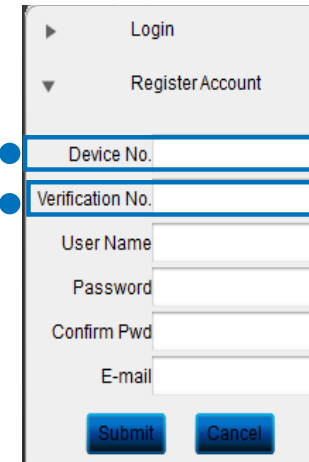
6


Registering an Account

1. Once you've installed SwannEye HD Pro on your computer, double-click the "SwannEye HD Pro" icon located on your desktop. The login screen is the first thing you will see when you start the software.
2. Click the "Register account" button to commence registration.




3. Enter the "**Device No.**" and "**Verification No.**" printed on a sticker that is located on the camera. It will look something like this:



 The "Device No." and "Verification No." are case sensitive. Only one camera is required to register an account, but additional cameras can be added later.

4. Enter a username. Your username can be any combination of letters and numbers. Usernames are case sensitive.
5. Enter a password and confirm in the field below. Like the username, passwords are case sensitive.
6. Enter a valid email address. If you forget your password, this is how we can contact you.
7. When you're done, click the "Submit" button to close the registration window and to register your account.

 If you've made a mistake copying down the codes, you will see an error message after clicking the "Submit" button. If this happens, your account will not be registered. To retry, just restart the registration process.

7

SwannEye HD Pro Software Interface

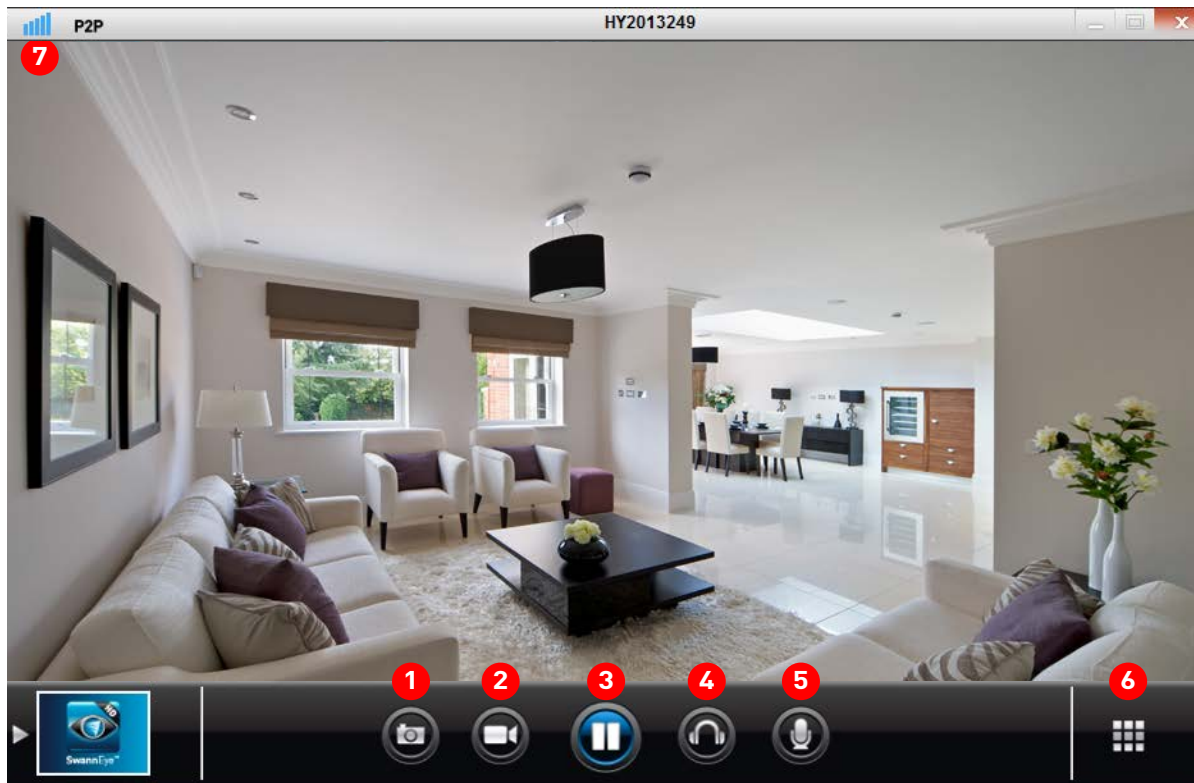


1. **Refresh Device:** Re-scans the connection to all cameras on your list.
2. **Add Device:** Allows you add additional cameras to your list.
3. **Camera Name:** The electronic ID (EID) of the camera.
4. **Open Folder:** Quick access to the local recordings folder. The location of the local recordings folder can be set in the “Program Settings” menu.
5. **Set Attribute:** Allows you to provide a local name for the camera, as well as changing the settings for both video and audio. You can also change the time zone and the IP address settings for your wired or wireless network.

6. **Set Administrator:** Allows you to change the administrator username and password.
7. **Set Video Password:** Allows you to set a password to view an encrypted live stream from the camera.
8. **Open Folder:** Quick access to the local recordings folder. The location of the local recordings folder can be set in the “Program Settings” menu.
9. **Set Attribute:** Allows you to provide a local name for the camera, as well as changing the settings for video and audio.
10. **Delete Device:** This option will delete your current account, as well as the camera(s) that you have registered. If you choose this option, you will need to register a new account.
11. **Play:** Press this button to view live video from your camera. If you have more than one camera, in quad mode click a screen then click play on the camera to start it in that section of the screen.

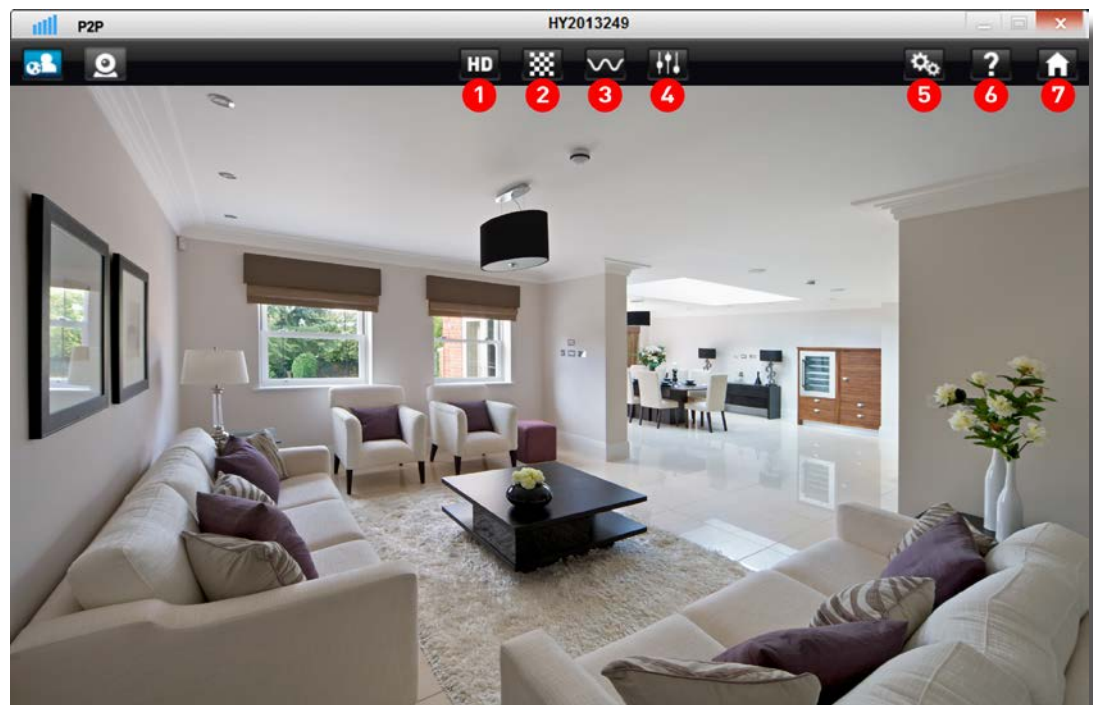


The camera(s) connected to your wired or wireless network are displayed under “LAN”, and the camera(s) that you have registered to your account, are displayed under “WAN”.



The Live View Interface is the primary window for accessing the camera. From here, you will be able to preview live images in near-real time.

1. **Photo:** Takes a snapshot of what's on the screen and saves it to your local computer.
2. **Start Record:** Initiates local recording. Click again to stop recording.
3. **Stop Watching/Start Watching:** Turns off the live viewing from the camera. Click again to turn on live viewing.
4. **Close Listen/Start Listen:** Toggles the audio monitoring capabilities of the camera off and on.
5. **Close Speak/Start Speak:** Toggles the intercom function off and on.
6. **Single/Quad Screen:** If you have multiple cameras connected to your wired or wireless network, or if you have more than one camera registered to your account, click this button to view them in quad screen mode. You will need to click on each section of the quad screen to select it then click "Start Watching" to see that camera live. Click again to return to a single live view.
7. **Signal Strength:** Indicates the robustness of the connection to the camera, much the same way as a cell phone indicates its connection to the network. Higher quality images are available when the signal strength is strong.



1. **HD Mode:** Click this if you would like to view the live image at 720p (1280 x 720) resolution. This is the highest quality available. Selecting this will require a fast internet connection with more bandwidth and higher bitrates.
2. **Clear Mode:** Click this if you would like to view the image at VGA (640 x 480) resolution. Select this for a high quality image at a bandwidth friendly bitrate.
3. **Smooth Mode:** Click this if you like to view the image at QVGA (320 x 240) resolution. Selecting this will produce a lower quality image but at a much smoother frame rate.
4. **Advanced Settings:** Click this if you would like to change the resolution, image quality, bit rate and bandwidth file size manually. Changing the bandwidth file size, may help if you are viewing the camera from a remote location.
5. **Program Settings:** Click this to change the save location for all your local recordings. You can also alter the video recording length, enable live video fluency optimisation and to clear the administrator and video encryption password.
6. **Help:** Click this to access an electronic version of the user manual.
7. **Home Page:** Click this to access the Swann website.



Double-click the live image to view full-screen. Double-click again to view in a window. Just be aware, the on-screen controls will not appear when viewing full-screen.

8

SwannEye HD Mobile App

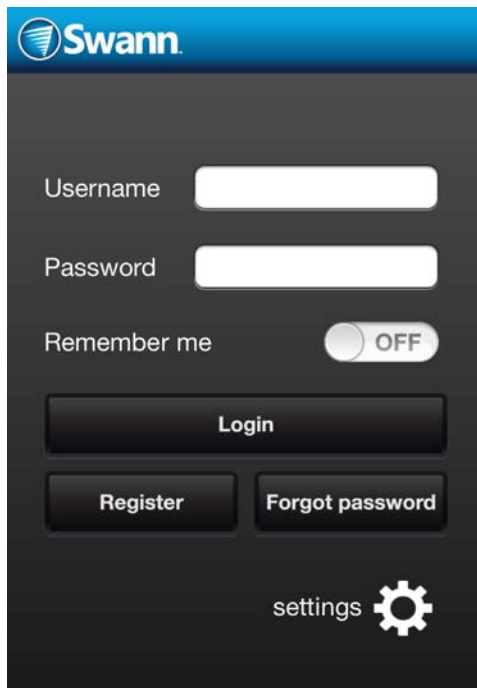
The SwannEye HD mobile app is free to download for all Swann users, and is available from the respective Apple App and Google Play stores. Please note, make sure you download the HD version of the SwannEye mobile app! The following images are captured from the iOS version of the mobile app, the Android app works in the same way.

To install SwannEye HD on iOS:

1. Open the Apple App Store.
2. Search for “SwannEye HD”.
3. Tap the “FREE” button, then tap “INSTALL APP” to install.

To install SwannEye HD on Android:

1. Open Google Play Store.
2. Search for “SwannEye HD”.
3. Tap the “INSTALL” button to install.



Running the app: Locate the SwannEye HD app and tap the icon to run. The app will load and take you directly to the login screen. If you’ve registered an account via the PC or Mac software, you can login straight away using the same account details. If you need to register an account, tap the “Register” button.

To create an account: If your mobile device has a camera, you can use the QR code that is located on the sticker under or on the back of the camera to register the “Device No.” and “Verification No.” Tap the “QR Code” button located at the bottom of the registration screen.

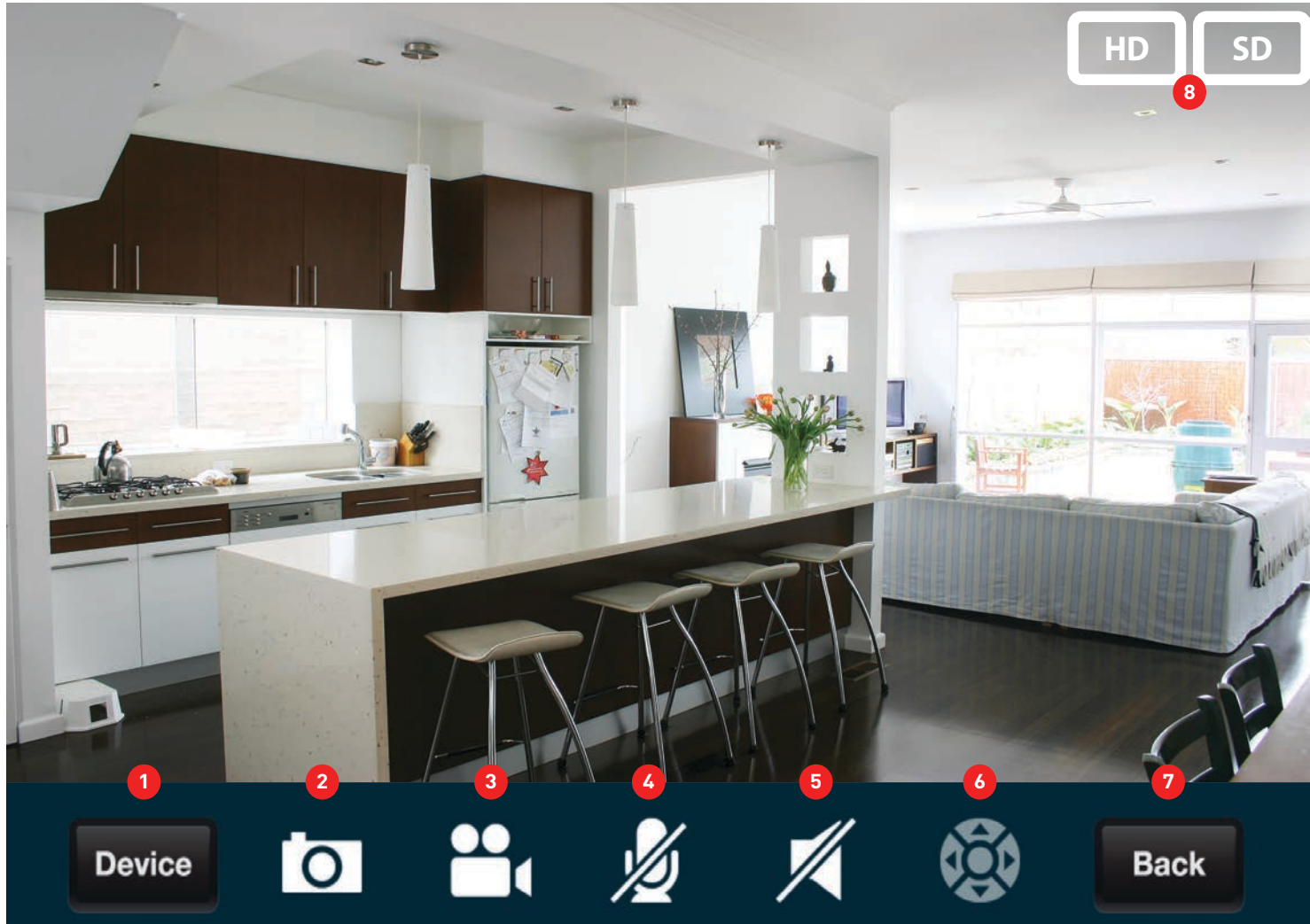
Aim your camera at the sticker located on the camera. Your device may take a moment to focus and correctly read the QR Code. Once it has, you will be returned to the registration screen and the “Device No.” and “Verification No.” fields will be automatically entered.

If your mobile device doesn’t have a camera, you can manually enter the “Device No.” and “Verification No.” information.

Enter details for “User name”, “Password” and “Email”, then tap the “Done” button to finish. You’ll be returned to the login screen, and you can use your newly created account to log in.

9

SwannEye HD Mobile App Interface

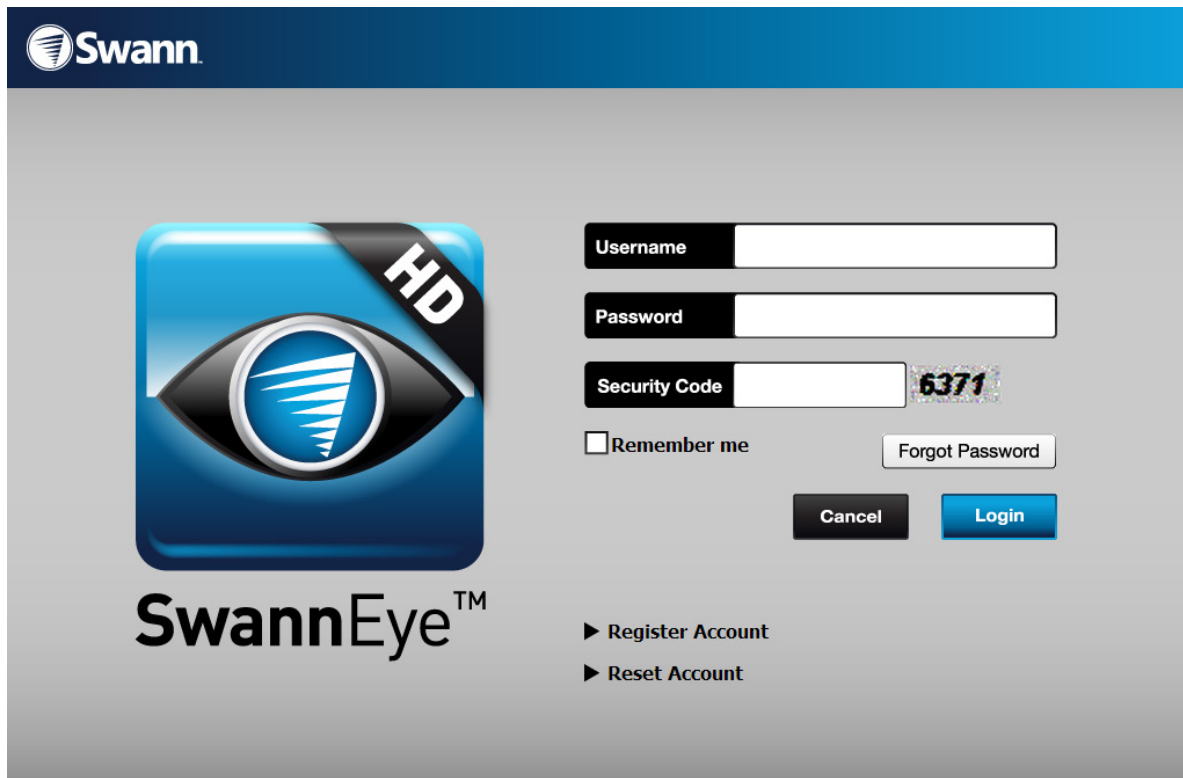


1. **Device:** This brings up the device list, where you can control and alter the camera(s) associated with your account.
2. **Image Capture:** Instantly takes a snapshot and saves it to the photo gallery.
3. **Record:** Initiates video recording. The capture quality will be at the same quality and frame rate as the live stream that you are viewing. Videos will be saved to the internal storage located on your mobile device.
4. **Enable/Disable Microphone:** This will enable or disable the microphone on your mobile device. While enabled, it acts as an intercom, allowing sound captured by your mobile device to be heard at the camera if speakers are connected.
5. **Enable/Disable Speaker:** While disabled, no audio will be heard on your mobile device. When enabled, the live video stream will include the audio that is captured by the camera's microphone.
6. **Preset Points:** This feature is not available on the camera.
7. **Back:** Returns to the account login screen.
8. **HD/SD:** Display the live video stream in either High Definition (720p) or Standard Definition (480p or below).

10

SwannEye Website

If you don't have access to the SwannEye HD software on your PC or Mac, or availability to a mobile device, you can access your camera via the SwannEye website. Open your Internet browser and go to the following address - www.swanneye.com.



The screenshot shows the SwannEye website login page. At the top left is the Swann logo. On the left side is a large SwannEye HD logo featuring an eye icon. The main content area contains a login form with the following elements:

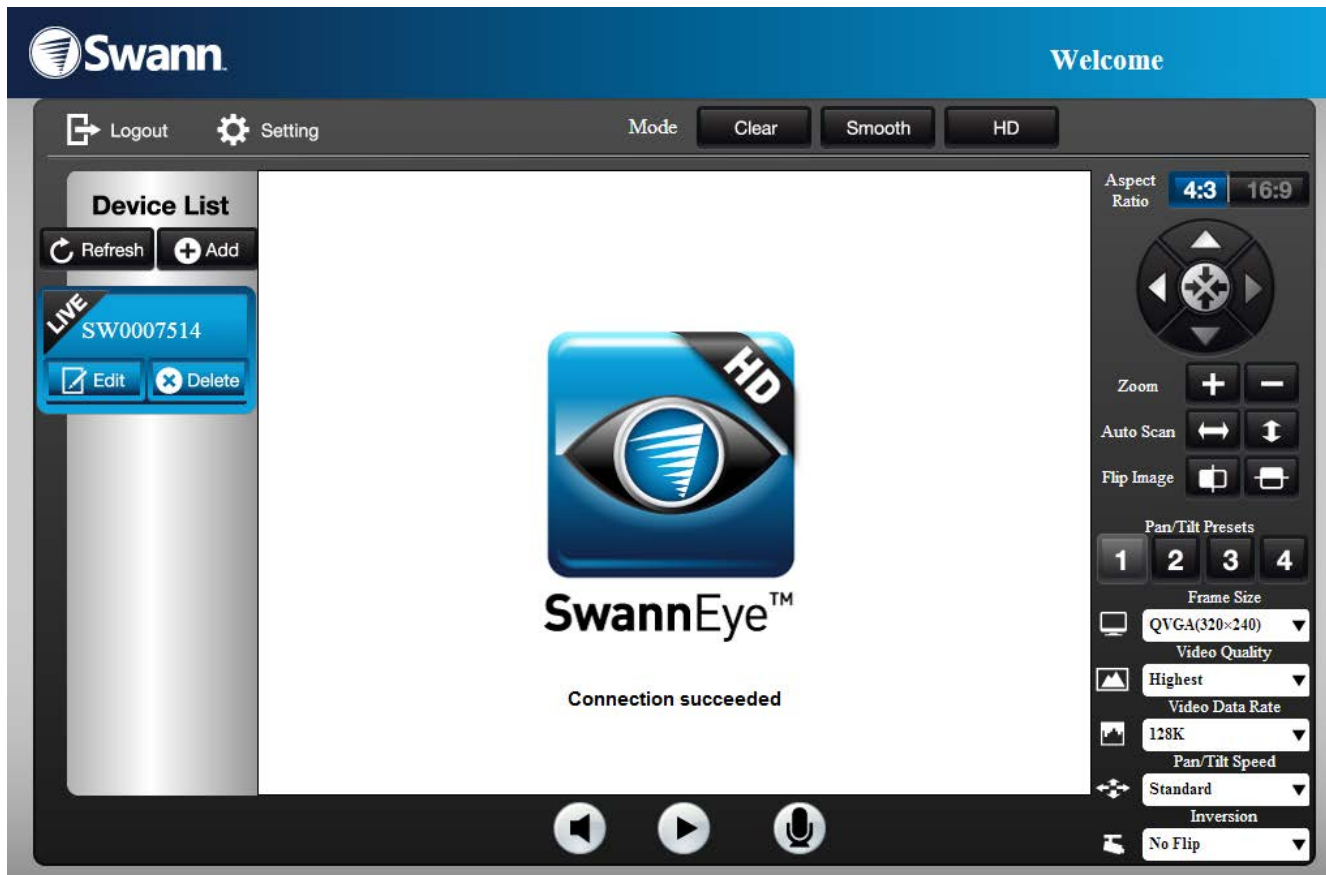
- Username**: A text input field.
- Password**: A text input field.
- Security Code**: A text input field with the value "6371" displayed next to it.
- Remember me**: A checkbox.
- Forgot Password**: A button.
- Cancel**: A button.
- Login**: A button.

At the bottom of the form area, there are two links:

- ▶ **Register Account**
- ▶ **Reset Account**

You can log in using your current account details or you can register a new account.

Once you gain access to the website, you will see the following interface as displayed on the next page.



Before you can access a live video stream from the camera, a plugin has to be downloaded and installed. The plugin is quite small and installation does not take long. Your operating system and/or virus protection program may ask you for permission to run the file. Select the relevant options available to complete installation. Restart your browser after installation.



The live view interface on the website is almost exactly the same as the main interface for the SwannEye Pro HD software on the computer - it just looks slightly different but operates in the same way.