

# NEC MultiSync® PA Series

*Wide Gamut LED-backlit color accurate  
desktop displays*

Color accuracy that you can trust. The 24" PA242W-BK, 30" PA302W-BK and PA302W in white are the new benchmark desktop display for color critical applications. The innovative GB-R LED backlight provides over 99% coverage of the Adobe RGB color space while consuming up to 44% less power than comparable CCFL backlights. Utilizing a high performance AH-IPS LCD panel and backed by a 4 year warranty with Advanced Exchange, the MultiSync PA Series will reliably deliver high quality, accurate images simply and beautifully.



## Impeccable Image Performance

A GB-R LED backlight, a high performance AH-IPS LCD panel and the SpectraView Color Engine deliver great color in every environment.

- Up to 99.3% coverage of the Adobe RGB color space and accurate 100% coverage of sRGB
- 10-bit HDMI and DisplayPort inputs can use 1.07 billion colors out of a palette of 4.3 trillion colors
- AH-IPS LCD provides wide viewing angles of 178°

## Simple Color Management

The sophisticated color engine provides extensive, intuitive control over color settings.

- MultiProfiler software and on-screen controls provide access to thousands of color gamut, gamma, white point, brightness and contrast combinations
- Internal 14-bit 3D lookup tables (LUTs) work with the SpectraViewII color calibration solution for unparalleled color accuracy

## A Better Workflow

Exclusive, innovative features can eliminate steps in a color editing workflow, saving time and hassle.

- 5 completely customizable picture modes provide shortcuts to commonly used graphics settings
- MultiProfiler loads ICC profiles into presets and also provides keyboard shortcuts for common functions
- 2 up / 3 down USB hub with DisplaySync Pro controls two computers with one keyboard and mouse

## A Perfect Fit for Your Workspace

Future-proof connectivity, great ergonomics, VESA mount and a choice of black or white cabinets to fit every desk and office environment.

- 10-bit DisplayPort and HDMI as well as DVI-D and VGA inputs connect to most PC and Mac computers
- Four-way ergonomic stand boasts pivot, swivel, tilt and height-adjustment up to 150mm
- VESA-standard mounting holes for multi-display setups

## Color Accurate Editing



### The Essential

Designed for color accuracy while editing images and video, the MultiSync PA Series can accurately emulate several color spaces, including Adobe RGB, sRGB, REC-709 and DCI.

### The Extras

Using MultiProfiler, the presets in a MultiSync PA Series can be set to emulate most other color spaces simply by loading an ICC profile from a printer, display or projector, allowing you to quickly switch between multiple color spaces while editing. In addition, you can display the same image in two different picture modes simultaneously on screen, allowing for a quick preview of a second color space and saving time switching between color spaces in editing software.

## Multiple Computer Environments



### The Essential

With plenty of connectivity options, including DisplayPort, DVI-D, HDMI and select models with Mini DisplayPort and VGA connections, the MultiSync PA Series can connect most modern computer systems.

### The Extras

Each MultiSync PA Series features a USB hub with two upstream connections and three downstream connections. This allows you to connect two different computers using the USB port and share a keyboard, mouse and a third device between the two computers with the push of a button. Since the internal LUTs store the calibration data in the display, every input is a calibrated input.



# Adaptable to Every Workspace

## The Essential

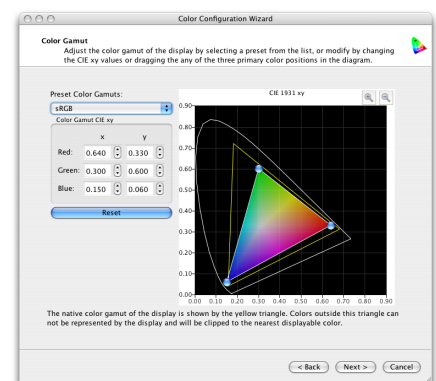
With a fully-featured ergonomically designed stand, the MultiSync PA Series displays rotate, tilt, pivot to portrait and extend up to 150mm. The removable stand features an integrated cable management system with cover and also includes a locking feature for easy transport. In addition, the MultiSync PA302W is available in both black and white to better match the design of your office or home.

## The Extras

The MultiSync PA Series on screen display (OSD) is fully featured and contains exclusive controls for color and inputs and will rotate to match the orientation of your display. There is also a dedicated button for turning the Picture in Picture mode on and off and another for switching inputs.



# Color Space Emulation



## The Essential

Built-in presets for standard color spaces, including sRGB, AdobeRGB, DCI and even medical DICOM standard provide quick access to previewing your work in a specific color space.

## The Extras

MultiProfiler software gives you direct control over your display's built-in preset so that you can have multiple custom color space emulations simultaneously on the display. Color gamut, white point, gamma and brightness are controllable for each preset and ICC color profiles for printers or displays can also be loaded into the presets for a more perfect color match.

# Picture in Picture / Picture by Picture



Picture in Picture  
shown with 2 separate inputs



Picture by Picture  
shown with the same input, multiple color spaces

## The Essential

Picture in Picture and Picture by Picture configurations allow multiple inputs to be shown on screen simultaneously in order to improve productivity.

## The Extras

The MultiSync PA Series allows for two different inputs to be shown simultaneously, which is useful for multiple computer configurations or even replacing multiple display setups. The same input can also be displayed in a second color space, which is most often used for a quick preview of an output color space (for example, sRGB) while working in a different color space (for example, Adobe RGB). This saves the time used to switch back and forth between color spaces as final editing tweaks are made.



10-bit Color

10-bit color eliminates banding



8-bit color shows banding

## The Essential

10-bit color or “deep color” provides an extra 2 bits of color data accessible through the display, extending the typical display’s 16.7 million colors to over 1 trillion colors. This improves gradients and reduces image banding.

## The Extras

The MultiSync PA Series offer 10-bit color support over DisplayPort and HDMI inputs for increased color fidelity. When matched with 10-bit operating system, software applications and video card, images are displayed with even more accuracy than ever before.

# SpectraView<sub>II</sub>™ Color Calibration Option

## The Essential

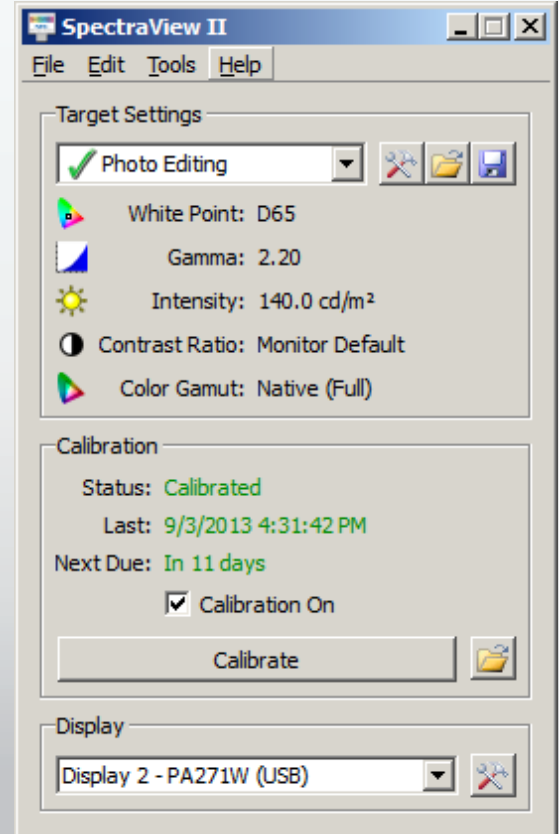
Available as an option for the PA242W, the SpectraView<sub>II</sub> system uses an external color sensor to ensure the consistency and accuracy of the colors on your NEC display. SpectraView<sub>II</sub> is the only software that calibrates the lookup tables (LUTs) in an NEC display, eliminating a loss of color caused by video card LUT calibration.

## The Extras

The SpectraView<sub>II</sub> system is simple, quick and reliable. Custom calibration targets allow you to calibrate to thousands of calibration combinations and the calibration validation

functionality provides you with everything you need to trust the calibration results.

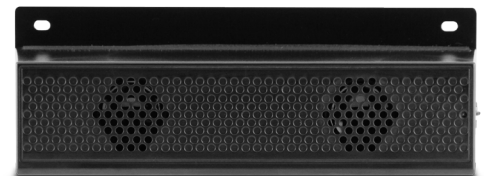
In addition, SpectraView<sub>II</sub> includes lifetime upgrades and can be used for your future NEC displays.



## Optional Accessories



Hood Compatibility		
NEC Model No.	HDP A212426	HDP A30-2
Hood Size	21" - 24"	30"
Works With	PA242W-BK	PA302W PA302W-BK



2W USB SOUNDBARPRO

## The Essential

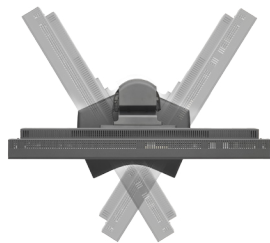
NEC offers several accessories to complete your professional desktop setup, from hoods that shield the LCD screen to the multimedia soundbar that attaches directly to your display.

## The Extras

The 2W USB connected SOUNDBARPRO attaches directly to your NEC MultiSync display and provides good quality multimedia audio. Each MultiSync PA Series features an optional custom-engineered hood designed to shield ambient light from the screen, providing more control over your viewing experience.

## Specifications for MultiSync PA242W-BK/PA302W/PA302W-BK

MODEL	PA242W-BK			PA302W/PA302W-BK		
<b>DISPLAY</b>	Panel Technology	Backlight Type	Viewing Angle	Contrast Ratio	Lookup Table	Limited Warranty
	AH-IPS	GB-R LED	178°	1000:1	14-bit 3D	4 years
Viewable Image Size	24.1"			29.8"		
Aspect Ratio	16:10					
Native Resolution	1920 x 1200			2560 x 1600		
Pixel Pitch	0.27mm			0.251mm		
Pixels Per Inch	93 @ native resolution			101 @ native resolution		
Brightness (typical)	340 cd/m <sup>2</sup>					
Response Time (typical)	8ms Rapid Response			6ms Rapid Response (G-to-G)		
Color Gamut*						
Adobe RGB Coverage/Size**	99.3% / 108.6%					
NTSC Coverage/Size	94.8% / 103.7%					
sRGB Coverage/Size	100% / 146.4%					
Displayable Colors	1.07 billion out of 4.3 trillion (10-bit DisplayPort or HDMI input); 16.7 million colors out of 1.05 billion color palette (DVI-D and VGA inputs)			1.07 billion out of 4.3 trillion (10-bit DisplayPort or HDMI input); 16.7 million colors out of 1.05 billion color palette (DVI-D)		
Input Connectors	DisplayPort, HDMI, DVI-D, VGA			DisplayPort, Mini DisplayPort, HDMI & DVI-D		
<b>POWER CONSUMPTION</b>						
On (typical)	56W			87W		
Power Savings Mode (typical)	0.2W			1.4W		
<b>PHYSICAL SPECIFICATIONS</b>						
Dimensions (WxHxD)						
Net (with stand)	21.9 x 14.8 - 20.7 x 8.9 in. / 556.8 x 378 - 528 x 227.6 mm			27.1 x 18.4-24.3 x 11.9 in. / 688 x 466.4-616.4 x 301.6 mm		
Net (without stand)	21.9 x 14.2 x 3.3 in. / 556.8 x 362.4 x 85 mm			27.1 x 17.6 x 3.2 in. / 688 x 446.8 x 82 mm		
Weight						
Net (with stand)	23.4 lbs. / 10.6 kg			37.5 lbs. / 17.0 kg		
Net (without stand)	16.3 lbs. / 7.4 kg			19.6 lbs. / 8.9 kg		
VESA Hole Configuration	100 x 100mm			100 x 100mm, 200 x 100mm		
<b>ENVIRONMENTAL CONDITIONS</b>						
Operating Temperature	41-95°F / 5-35°C					
Operating Humidity	20 - 80%					
Operating Altitude	6562 ft. / 2000m			16,404 ft. / 5000m		
Storage Temperature	14-140°F / -10-60°C					
Storage Humidity	10-85%					
Storage Altitude	40,000 ft. / 12,192m					
Tropical Environments	Yes					
<b>ADDITIONAL FEATURES</b>	USB hub (2 up/3 down) with DisplaySync Pro, 5 Picture Modes, Picture in Picture, Picture by Picture, ICC Profile Emulation, Color Vision Emulation, 14-bit 3D gamma, Wide Color Gamut, Adobe RGB, DICOM, REC 709, Digital Uniformity Correction, black Level adjustment, 150mm height-adjustable and quick release stand with locking base and cable management as well as tilt, swivel and pivot, MultiProfiler software, touch-integratable, CableComp, TileMatrix and TileComp support, Standalone hardware calibration (PA302W models only)					
<b>OPTIONAL ACCESSORIES</b>	SpectraViewII Color Calibration Kit (SVII-PRO-KIT), Color calibration sensor (MDSVSENSOR3), SpectraView software (SVIISOFT), Hood (HDP A212426), Multimedia soundbar - black (SOUNDBARPRO)			SpectraView <sub>II</sub> Color Calibration Kit (SVII-PRO-KIT); Color calibration sensor (MDSVSENSOR3); SpectraView software (SVIISOFT); Hood (HDP A30-2); Multimedia soundbar - black (SOUNDBARPRO)		



\* Color gamut size and coverage calculated as 2-D gamut area in CIE 1931 xy colorspace. Size is the total relative display gamut area and includes any colors outside the reference gamut. Coverage is the relative display gamut area contained inside the reference gamut. NTSC values provided for comparison purposes - modern broadcast video uses SMPTE-C, ITU-R BT, 709-5/sRGB or EBU primaries.

\*\* AdobeRGB is a standard defined by Adobe Systems Incorporated.

MultiSync is a registered trademark, and AmbiBright, SpectraView<sub>II</sub> and XtraView+ are trademarks of NEC Display Solutions. All other brand or product names are trademarks or registered trademarks of their respective holders. Product specifications subject to change.

©2013 NEC Display Solutions of America, Inc. All rights reserved.  
25.NEC.80.GL.UN.032 rev. 9.17.13

**NEC Display Solutions**

500 Park Boulevard, Suite 1100  
Itasca, IL 60143  
866-NEC-MORE

necdisplay.com

**NEC**