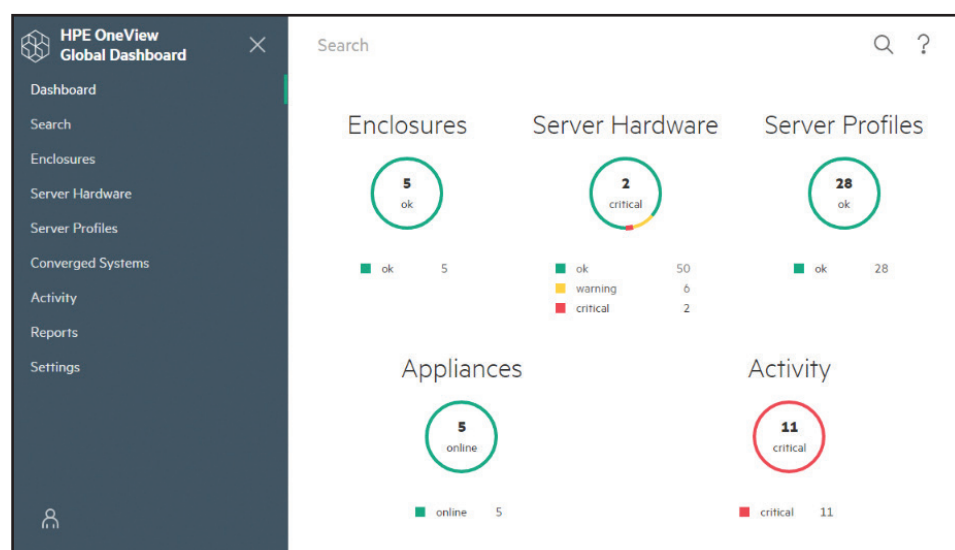


Achieving enterprise scale with HPE OneView

HPE OneView Global Dashboard

Using HPE OneView Global Dashboard, IT administrators can:

- **Simplify compliance**—Quickly see which servers are not compliant with the standard
- **View current inventory**—Look at reports online for immediate analysis or download for additional offline analysis
- **Quickly understand resource status**—See details for multiple systems and receive a high-level overview of the status of those resources
- **Automate global reporting**—Report on all managed servers across all locations, including verification of compliance
- **Minimize bandwidth consumption**—Automatically receive notifications of all changes in the environment



Composable IT management made easier

To succeed in today's fiercely competitive marketplace, your business must be ready to capitalize on every opportunity. Meeting that goal requires fast IT service delivery, backed by a simple, highly efficient IT infrastructure with automated workflows.

HPE OneView is a proven infrastructure automation engine built with software intelligence.

Designed to support infrastructure composability, HPE OneView enables you to configure, monitor, update, and repurpose IT resources with a single line of code—enabling your IT staff to respond to changing application needs quickly and efficiently.

Raising the bar on composable infrastructure management

Today, the HPE OneView Global Dashboard takes composable infrastructure management to new levels of simplicity and efficiency. The Global Dashboard builds on the core HPE OneView capabilities by adding visibility and reporting across multiple appliances in different geographic regions.

With the HPE OneView Global Dashboard, your business benefits from:

- The ability to troubleshoot alerts and view core inventory data across as many as ten HPE OneView appliances
- Smart Search of all IT assets
- Single sign-on, in-context launch for all managed resources, even across data centers

One tool

With one tool—the **HPE OneView Global Dashboard**—you can surface information about critical resources and alerts, allowing IT staff to identify these resources **at a glance** from the summary dashboard page. From there, admins can quickly navigate to those resources, determine action, and begin the corrective process. With the HPE OneView Global Dashboard, IT has the information they need to resolve issues quickly and focus on higher value opportunities for your business.

Simplified management and navigation

Offering quick access to infrastructure resources, HPE OneView Global Dashboard provides links to the relevant pages on an HPE OneView appliance.

To further simplify management, single sign-on puts approved users just one click away from powerful, device-level lifecycle management, while also removing the need to navigate between appliances.

By building the Global Dashboard into HPE OneView, you can manage your HPE BladeSystem c-Class, HPE ProLiant DL, HPE Hyper Converged 380, HPE Apollo, and HPE Synergy servers as one.

Unified view

Regardless of where your data centers are located—across town or across the globe—HPE OneView Global Dashboard provides a unified view of your HPE infrastructure resources. Not only can you view the health of your servers, profiles, and enclosures across multiple appliances, but also across multiple versions of HPE OneView, including 1.2, 2.0, 3.0, and HPE Synergy Composer. The Global Dashboard also:

- Aggregates critical activities from multiple appliances into a single feed, so you can readily see problems occurring with your monitored hardware
- Generates reports for all monitored assets (including firmware versions), so you can view inventory

Easy access to reports

Rather than wait for day-end or month-end reports, HPE OneView Global Dashboard provides easy access to real-time reports on inventory and the health status of your HPE infrastructure.

Integrated inventory reporting allows you to see server hardware inventory, including the associated server and HPE iLO firmware versions. You can ensure that there are no duplicate resource IDs—such as serial numbers, World Wide Names (WWNs), and media access control (MAC) addresses—in your environment.

In addition, the compliance report makes it easy to identify which resources are not at your current firmware baseline, which helps to accelerate configuration compliance and consistency.

Faster, better decision making

The faster you can make decisions, the better chance you'll have to capitalize on new opportunities before your competition. Offering a near real-time Smart Search feature, HPE OneView Global Dashboard provides an at-a-glance view of system health status, as well as enables you to search for any attribute associated with a resource. The Global Dashboard's Smart Search feature:

- Provides access to devices of interest in seconds, enabling greater visibility and helping you make faster decisions
- Enables you to easily filter the view to the set of resources that has problems, helping you to focus on only the items that need remediation

Get more from management

Contact your HPE representative today to learn how HPE OneView with the new Global Dashboard can help your company by supporting simple, unified, global-scale management of your infrastructure.

Learn more at
hpe.com/products/ovglobaldashboard



Sign up for updates