

# AXIS Camera Station

## Optimized for easy and efficient surveillance



- > Optimized for Axis network video products
- > Quick system setup
- > Intuitive operation
- > Effective investigation
- > High-definition identification

AXIS Camera Station is a monitoring and recording system for small- to mid-sized installations. Optimized for Axis network video products, this software offers easy installation and setup and an intuitive user interface for effective investigation and high-definition identification.

AXIS Camera Station meets the needs for efficient surveillance of small- to mid-sized installations, such as retail shops, hotels, schools and manufacturing sites. It is a proven solution designed to perfectly match Axis' wide range of HDTV network video products and product features.

The software client can be installed on any computer, enabling remote viewing and control from anywhere on the corporate network or the Internet.

An easy setup wizard with automatic camera discovery guides you through all the necessary steps of the configuration process. This allows the system to be up and running within minutes.

An intuitive user interface with flexible live-view layout, site maps, powerful event configuration, efficient alarm management and responsive PTZ control makes it possible to effectively manage the cameras in the system.

Quick investigation and retrieval of evidence for safe and secure export is enabled by intuitive timeline visualization and an efficient video search. By defining an area of interest you can quickly search through vast amounts of high-definition recordings.

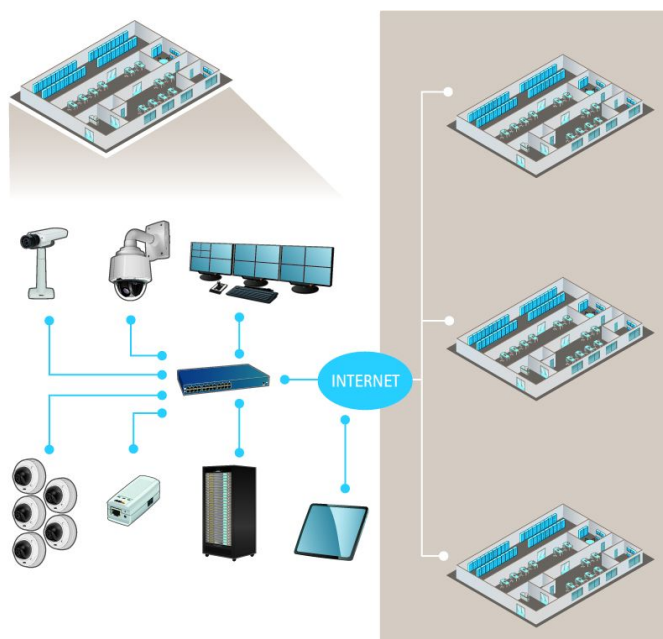
H.264 compression and advanced camera-based video motion detection enables high-definition video for identification even if bandwidth and storage is limited.



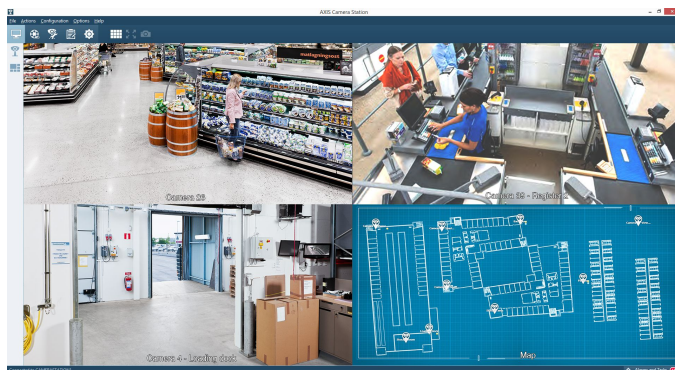
# Technical Specifications — AXIS Camera Station

General	
Languages	English, Arabic, Brazilian Portuguese, Dutch, Finnish, French, German, Italian, Japanese, Korean, Persian, Polish, Russian, Simplified Chinese, Traditional Chinese, Spanish, Swedish, Turkish, Vietnamese
Licenses	Base license for 4 or 10 cameras, Additional licenses in increments of +1, +5 or +20 up to 100 cameras 30-day unlimited trial can be upgraded to licensed version
Number of channels	Up to 100 cameras, per server
Compatible products	Axis network cameras and encoders including HD, standard resolution, high resolution, Pan Tilt Zoom and thermal cameras with firmware 4.30 or later
Included accessories	Installation Guide CD with software and User manual
System accessories	AXIS T8310 Video Surveillance Control Board, AXIS P8821 I/O Audio Module, AXIS A1001 Network Door Controller
Video	
Audio	One-way audio streaming, AAC, G.711, G.726 compression
Video compression	H.264 (MPEG-4 Part 10/AVC), Motion JPEG
Resolutions	Supports all camera resolutions up to 5 megapixels
Frame rates	Up to 60 images per second per camera
Storage	
Storage Media	Use local hard drives or high performance NAS for storage
Storage capacity	Unlimited recording database, limited only by disk space Duration can be limited per camera to conform to local legal requirement
Live view	
Camera live view	Flexible live view configuration, Axis' Corridor Format, Multiple monitors, Hot-spot, Camera/view sequence, Site maps, Web page, Digital PTZ, Image enhancement
PTZ	Control of PTZ and dome cameras using mouse or joystick, Area zoom, Programmable hot-keys
Playback	
Search for recordings	Search for recordings based on camera, Date and time Timeline visualization, Smart search, Bookmarks, Locking of prioritized recordings
Playback	Up to 64x or frame by frame Up to 25 cameras synchronized playback
Export	Manual and scheduled export Single images in JPEG format, Video in ASF format Digital signature on exported recordings, Standalone player
Triggers & events	
Event triggers	Events triggered by video motion detection, Active Tampering Alarm, AXIS Cross Line Detection, External I/O, Action button, System triggers and device event triggers
Scheduled recording	Schedule per camera for continuous recording or customization of weekday and weekend recordings
Alarm actions	Record, Visual notification, Audible alert, Switch to camera/view Go to PTZ preset, Email, Alarm procedure, External I/O acknowledgement of alarms, HTTP notification
Logs	Alarm, Event and audit logs
System	
System recommendations	OS: Windows 8 Pro 64-bit CPU: Intel Core i7 RAM: 8 GB Graphics card: 1 GB onboard video memory with mult-screen support (client) Hard drives: SATA 6 Gb/s 7200 RPM Enterprise Class (server) Network: 1 Gbps Uninterruptible Power Supply (UPS)
Mobile access	Apps for Android and iOS devices (Available from third-party vendor)
Security	Multiple user access levels with password protection using local or Windows domain users (Active directory) Failover recording in cameras with SD card

## System setup example



## Live view example



## Playback example

