

SC 630 USB CTRL SC 660 USB CTRL

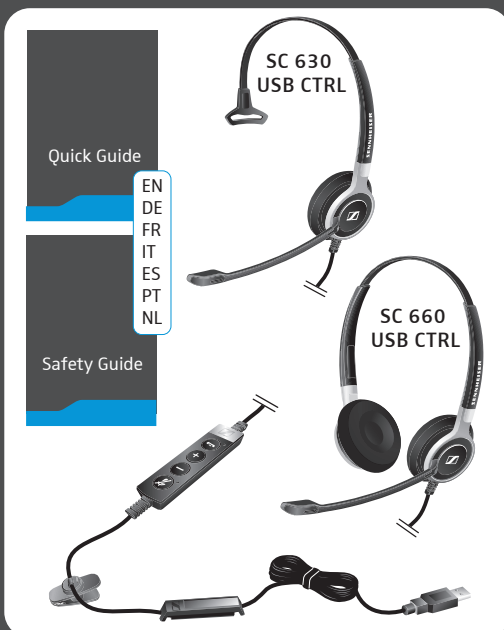


Quick Guide
Kurzanleitung
Guide rapide
Guía rápida

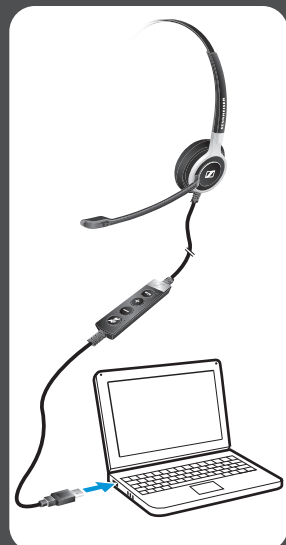
Instrucciones resumidas
Guía rápido
Beknopte handleiding
Guía rápida



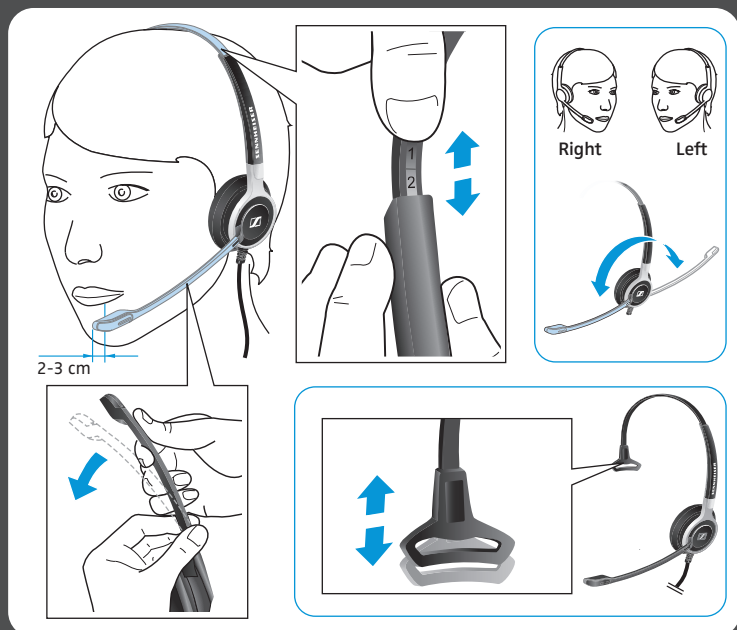
Delivery includes | Lieferumfang | Contenu |
Volume di fornitura | Volumen de suministro |
Itens fornecidos | Leveringsomvang



Connection possibilities |
Anschlussmöglichkeiten |
Possibilités de raccordement |
Possibilità di collegamento |
Posibilidades de conexión |
Ligações possíveis |
Aansluitmogelijkheden



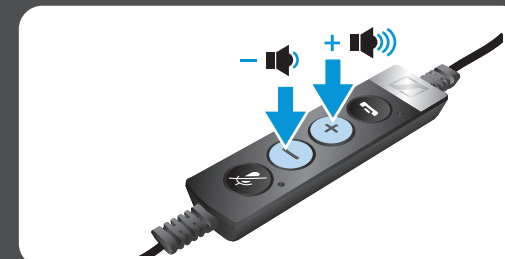
Wearing the headset | Headset aufsetzen |
Mettre le casque-micro | Indossare l'headset |
Ponerse los auriculares | Colocar o
micro-auscultador | De headset opzetten



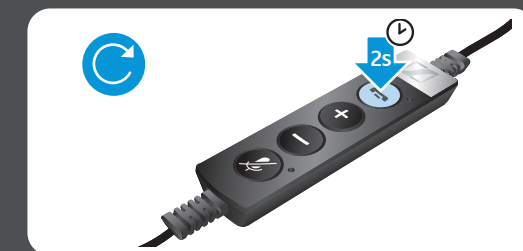
To accept/end a call | Anruf annehmen/beenden |
Prendre/terminer un appel | Accettare/Terminare una
chiamata | Contestar/finalizar llamada | Atender/
terminar chamada | Gesprek aannemen/ beëindigen



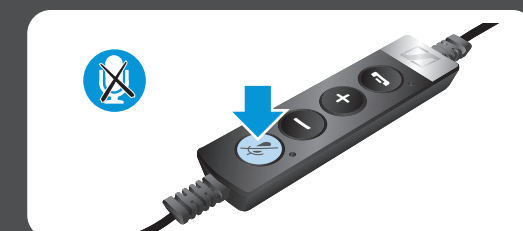
Adjusting the volume | Lautstärke einstellen | Régler le
volume | Impostazione del volume | Ajustar el volumen |
Ajustar o volume | Volume instellen



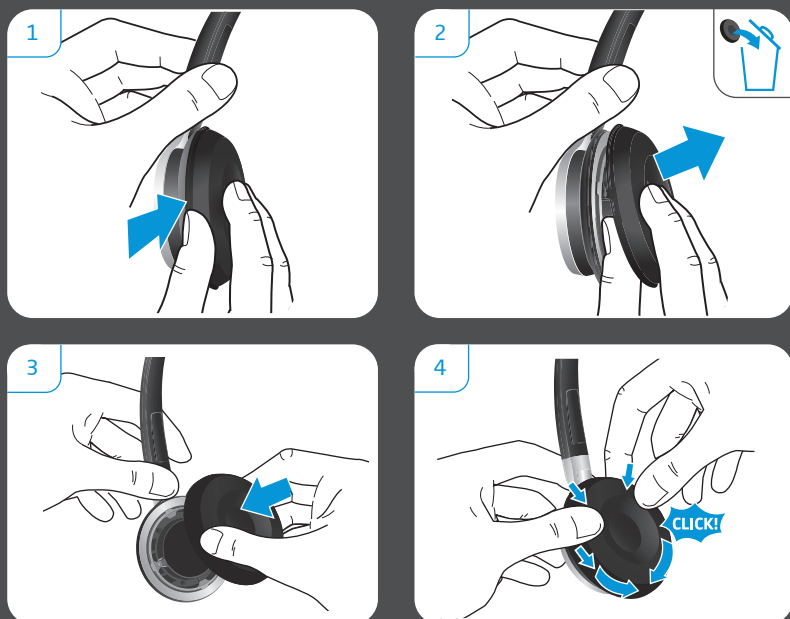
Redialing | Wahlwiederholung | Recomposer le dernier
numéro | Ripetizione della selezione | Rellamada |
Remarcação | Nummerherhaling



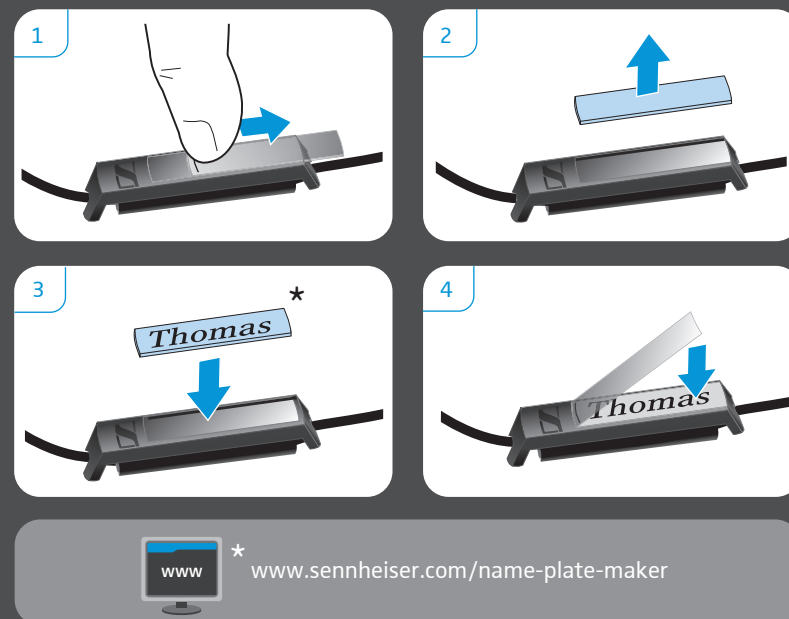
Mute Microphone | Mikrofon stumm schalten | Couper le
microphone | Silenziamento del microfono | Silenciar el
micrófono | Activar o modo de silêncio no microfone |
Microfoon op mute schakelen



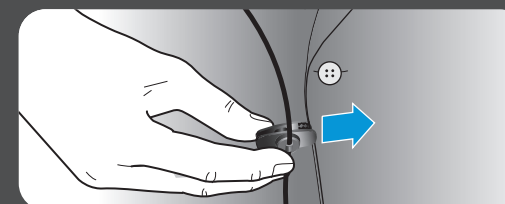
Replacing the ear pad | Ohrpolster austauschen | Remplacer le coussinet d'oreille |
Sostituzione dei cuscinetti auricolari | Cambiar las almohadillas | Substituir as
almofadas | Oorkussens vervangen



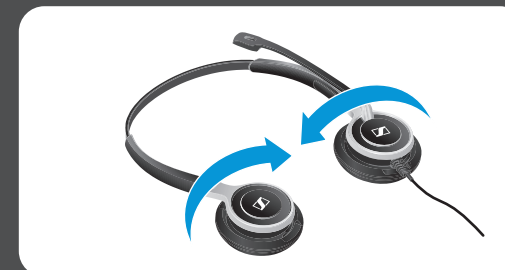
Labeling the headset | Headset kennzeichnen | Marquer le casque-micro | Contrassegni
dell'headset | Marcar los auriculares con un nombre | Identificar o micro-auscultador |
Headset markeren



Using the cable clip | Kabel-Clip verwenden | Utiliser la
pince pour câble | Utilizzo della clip per cavo | Utilizar el
clip de cable | Utilizar o grampo para cabo | Kabelclip
gebruiken



Transporting the headset | Headset transportieren |
Transporter le casque-micro | Trasporto dell'headset |
Transportar el headset | Transportar os micro-
auscultadores | De headset transporteren



Detailed information | Ausführliche Informationen |
Informations détaillées | Informazioni dettagliate |
Informaciones detalladas | Informações detalhadas |
Uitvoering informatie

Call Control Software



www.senncom.com/software



www.sennheiser.com/ccs/support



Sennheiser Communications A/S
Langager 6, 2680 Solrød Strand, Denmark
www.sennheiser.com/ccs

Printed in China, Publ. 02/13, A01

SC 630 USB CTRL SC 660 USB CTRL

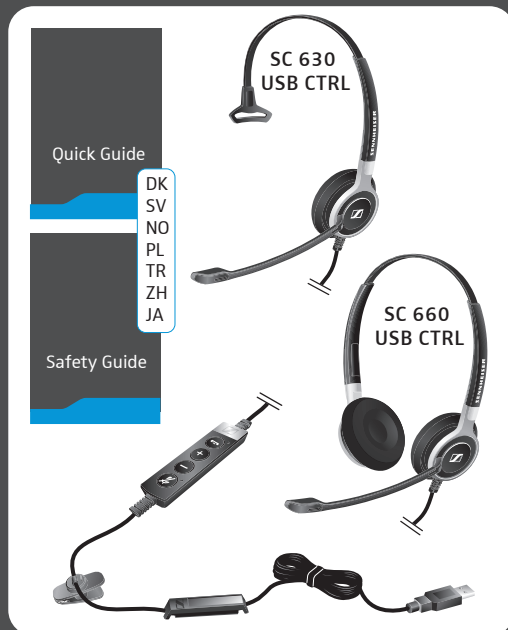


Quick Guide
Snabbguide
Quick Guide
Krótka instrukcja obsługi

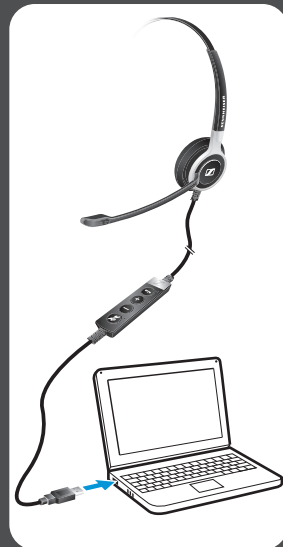
Hızlı Kılavuz
快速指南
クイックガイド



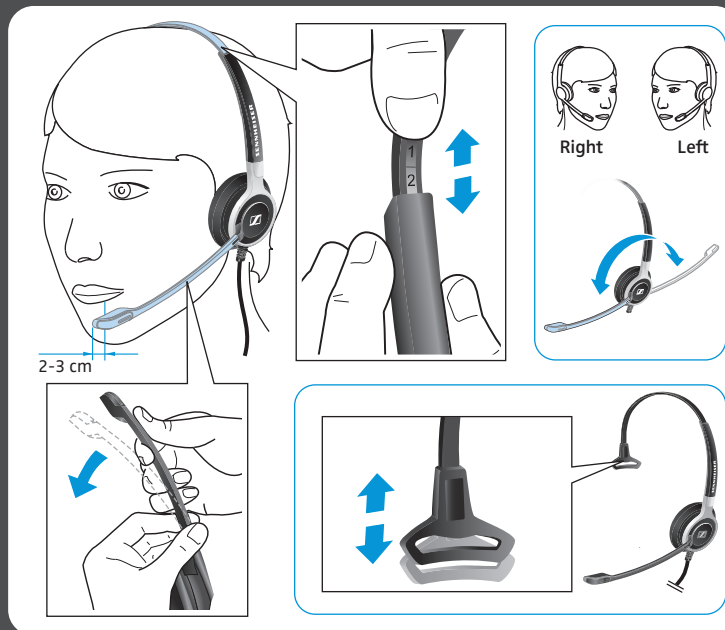
Leveringsomfang | Medfølgende delar | Leveranseomfang | Zakres dostawy | Teslimat Kapsamı | 供货范围 | 同梱されているもの



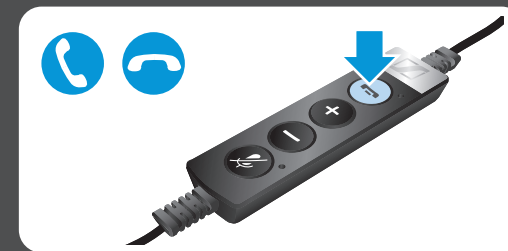
Tilslutningsmuligheder | Anslutning | Tilkoblingsmuligheter | Możliwości podłączenia | Bağlantı olanakları | 连接可能性 | 接続方法



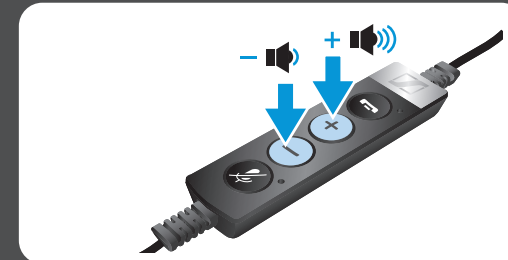
Brug af hovedsæt | Ta på headsetet | Sette på hodesettet | Zakładanie zestawu słuchawkowego | Kulaklı in takılması | 戴上耳机 | ヘッドセットを装着する



Modtagelse/afslutning af opkald | Ta emot/avsluta ett samtal | Ta imot/avslutte anrop | Odbieranie/kończenie połączenia | Çağrıyı al/kapat | 接听/挂断来电



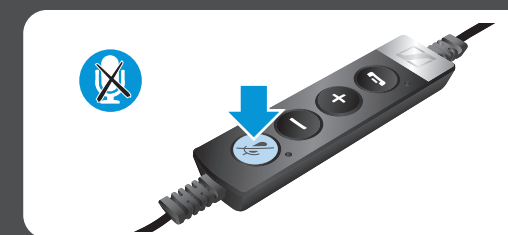
Indstilling af lydstyrke | Ställ in volymen | Stille inn lydstyrke | Regulacja głośności | Ses düzeyini ayarla | 调节音量 | 音量的調整



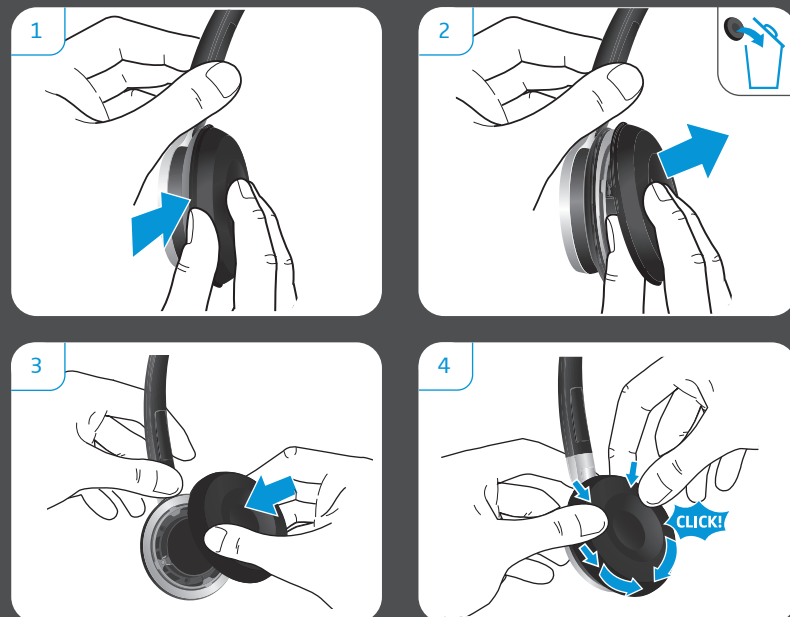
Gentagelse af nummerindtastning | Slå telefonnummer igen | Gjentatt oppringing | Ponownie wybieranie numeru | Tekrar ara | 重拨 | リダイヤル



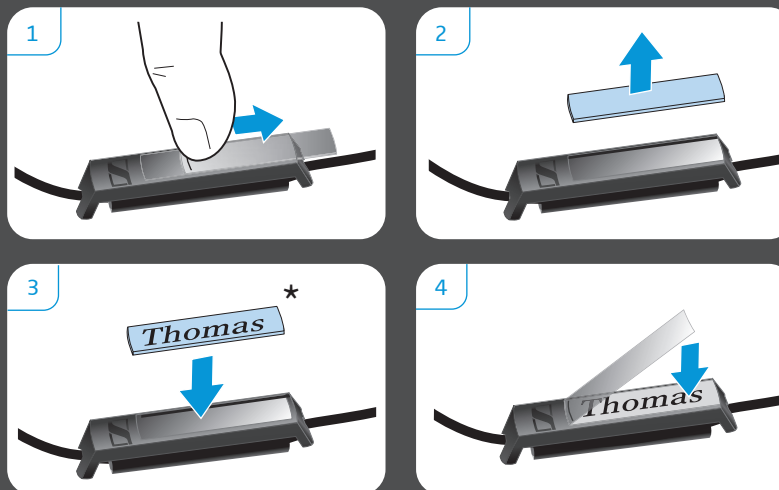
Frakobling af lyd på mikrofon | Stäng av mikrofonen | Aktivere mikrofonens lydlofsfunksjon | Wyciszenie mikrofonu | Mikrofonu kapat | 麦克风静音 | マイクのミュート



Udskiftning af ørepolstringer | Byt öronkuddar | Utskiftning av øreputer | Wymiana poduszek słuchawkowych | Kulak yastığının değiştirilmesi | 更换耳垫 | イヤーパッドを交換する

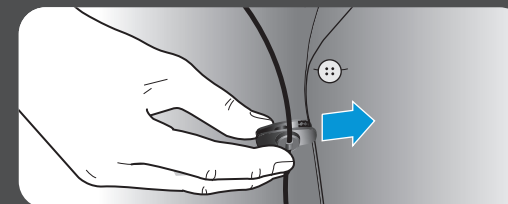


Identifikation af hovedsættet | Märk headsetet | Merke hodesettet | Oznakowanie zestawu słuchawkowego | Kulaklık setinin işaretlenmesi | 标记通讯耳 | ヘッドセットにラベルを付ける

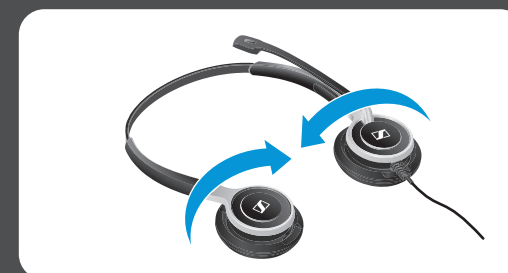


www * www.sennheiser.com/name-plate-maker

Brug af kabelklips | Använd kabelklämman | Bruk av kabelklips | Używanie zacisku kablowego | Kablo mandalı kullanılması | 使用耳机线夹 | ケーブルクリップを使用する



Transport af headset | Transportera headset | Transportere hodesettet | Transport zestawu słuchawkowego | Kulaklık setini taşıma | 携带耳机 | ヘッドセット輸送時



Sennheiser Communications A/S
Langager 6, 2680 Solrød Strand, Denmark
www.sennheiser.com/cc

Printed in China, Publ. 02/13, A01

Call Control Software



www.senncom.com/software



www.sennheiser.com/cc/support