

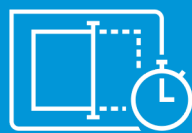


Fast scanning. Superb results.
Legendary HP reliability.

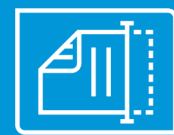
HP ScanJet Pro 3000 s4



Optimize workflows with
one-touch scanning



Fast, affordable scanning



Capture business
documents like a pro

Optimize workflows with one-touch scanning



Save time and improve performance with customized workflows. Seamlessly capture a wide range of paper types in a single operation and send information where you need to.



Create custom shortcuts

Included HP Scan software lets you define scan shortcuts for the types of scan jobs you perform most often, with settings such as paper size, resolution, file format, destinations, and more.



Advanced scanning features

Capture and organize documents, business cards, and other file types with feature-rich HP Scan software.

Advanced document management features—auto-orientation, auto-page-crop, and auto-tone—simplify production and perfect the contrast, brightness, and background removal of each page.



From paper to digital with ease

Capture every page easily and confidently—even stacks of mixed media sizes and weights—with HP EveryPage.



Enjoy peace of mind with legendary HP reliability

Prior to its introduction, a new HP ScanJet device undergoes rigorous HP testing to provide consistent, high-quality scans. Tests are performed with a large sample of devices through each step of the design process to be certain that the device measures up to HP standards. The result is a solid, reliable product that produces consistent, excellent scan quality over its entire life.

Fast, affordable scanning

Keep business moving

Handle large volumes at impressive speeds. Capture entire documents with single-pass, two-sided scanning up to 80 images per minute (ipm).¹ Rely on this scanner time after time—recommended for 4,000 pages per day.



Free up space for work. This HP ScanJet Pro is small and slim—a modern design perfect for the desktop.

Scan to the convenient USB drive for easy sharing or archiving.

Superb paper-handling

Built-in software and a 50-page automatic document feeder (ADF) deliver smooth paper handling.

With up to 1200 dpi resolution, you'll ensure high image quality for all your scans.



Capture a wide range of document sizes and types with HP EveryPage and an ultrasonic sensor. Supports media sizes up to 122 inches (309.9 cm) and paper weights up to 56 lb (210 g/m²).

Designed to conserve

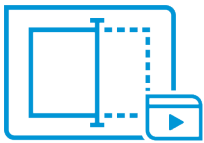
Support your business' environmental initiatives with a scanner designed to use energy efficiently. This scanner is ENERGY STAR® 3.0 certified and includes environmental specifications of CECP and EPEAT®² Silver.



Save energy and help cut costs with HP Instant-on Technology³ and HP Auto-Off Technology⁴—intelligence that readies your scanner when you need it and turns it off when you don't.

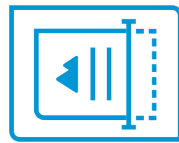


Capture business documents like a pro



Create customized scan shortcuts to save time

Create scan shortcuts and send images directly to popular cloud destinations—such as Dropbox and Google Drive™—with HP Scan software.



Built-in OCR

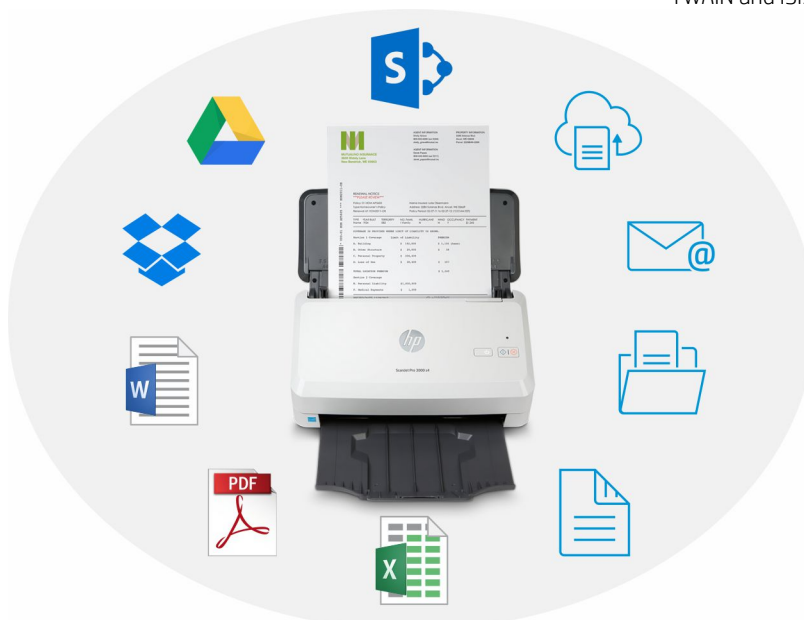
Use built-in optical character recognition (OCR) technology to easily transfer scans into editable text, encrypted PDF files, and a wide variety of additional file types.



Easily manage digital documents

Capture and organize documents, business cards, and other file types with feature-rich HP Scan software, including I.R.I.S. Readiris™ Pro and Cardiris™.

Integrate easily with popular and in-house software. Scan images directly into applications, with included and full-featured TWAIN and ISIS®.



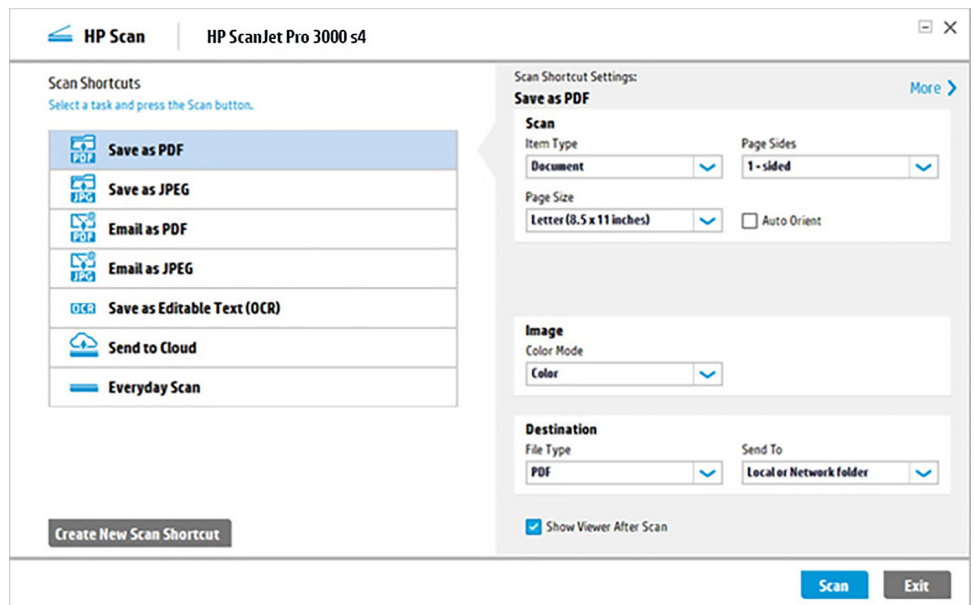
HP Scan software

Fast and easy, HP Scan software lets you scan with a single touch, capture text with OCR, create custom shortcuts, and take advantage of automated processes that simplify and improve workflows. Scan-to-cloud capabilities make it simple to capture and send information where you need it.

To download the software, go to hp.com/support and search using the scanner's part number.

Optimize workflows with one-touch scanning

- Use convenient built-in shortcuts for typical scanning tasks.
- Specify the most common scan settings.
- Create a custom shortcut.
- Streamline tasks with automated processes.



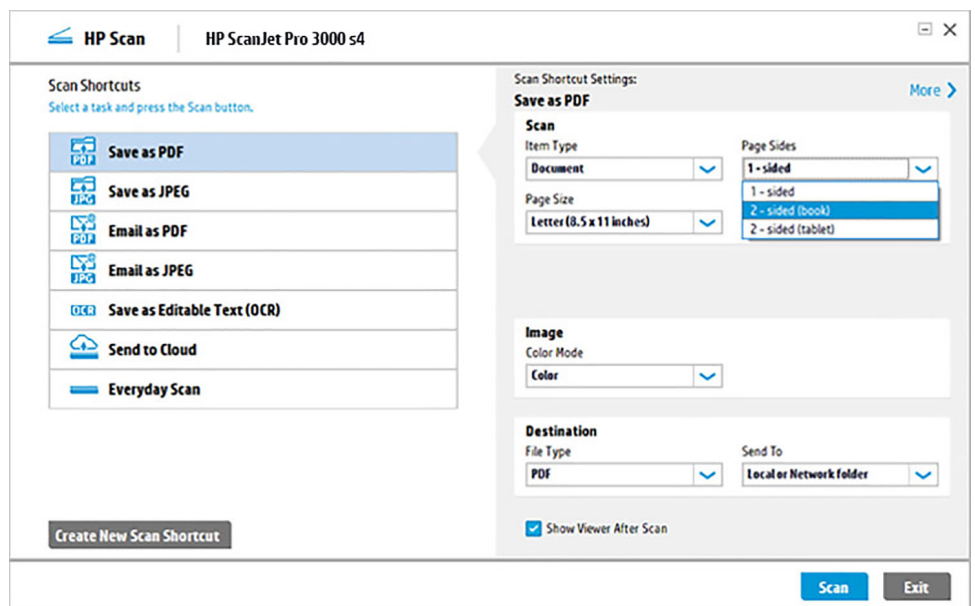
Choose basic scan settings

On the HP Scan main menu, there are options for the most basic scan settings, which are easily changed to suit your needs.

Under **Scan Shortcut Settings**, you can choose the **Item Type** (either document or photo), **Page Size**, **Image Color Mode**, **File Type**, and **Send To** destination.

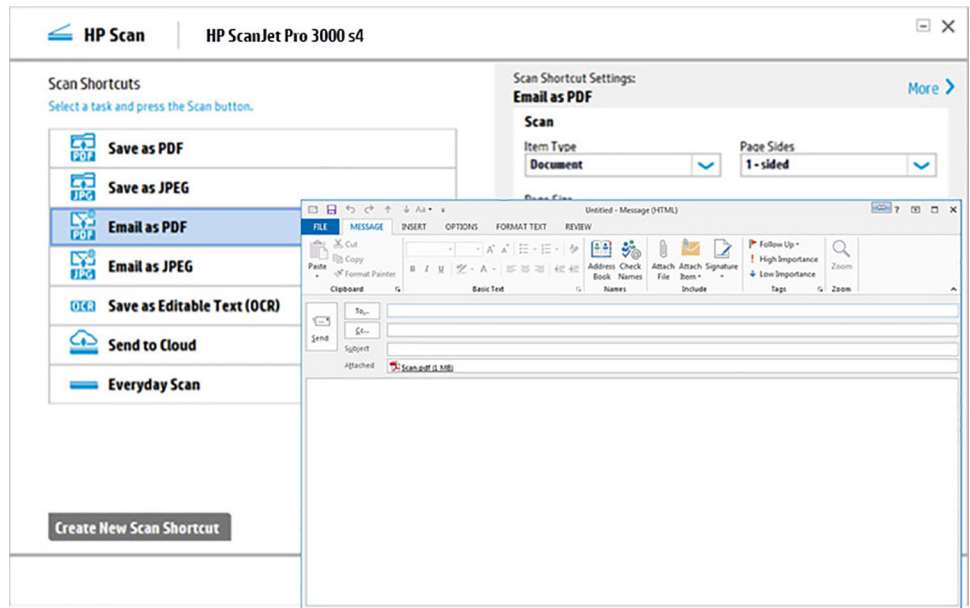
The **Page Sides** option is available in the initial scan window: you can select:

- **1-sided** scans only the side of the sheet that is facing up in the ADF.
- **2-sided (book)** scans so you can turn the pages on the “long-edge” similar to a book or magazine.
- **2-sided (tablet)** scans so you can turn the pages on the “short edge,” similar to pages on a conventional notepad or tablet.



Attach scans to email

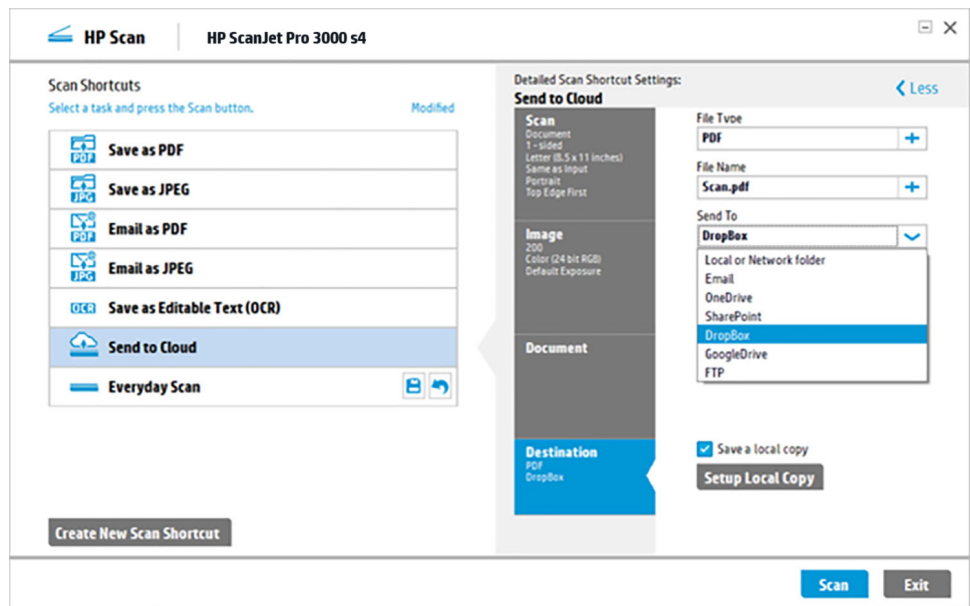
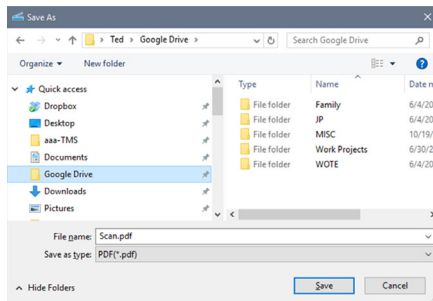
When you select **Email as PDF** or **Email as JPEG**, HP Scan opens your default email application and attaches the image to a new email. Just fill in the recipient, the subject, and any message and hit **Send**.



Send scans directly to the cloud

HP Scan allows you to easily send your scans to an email recipient or to the cloud via cloud-based storage locations.

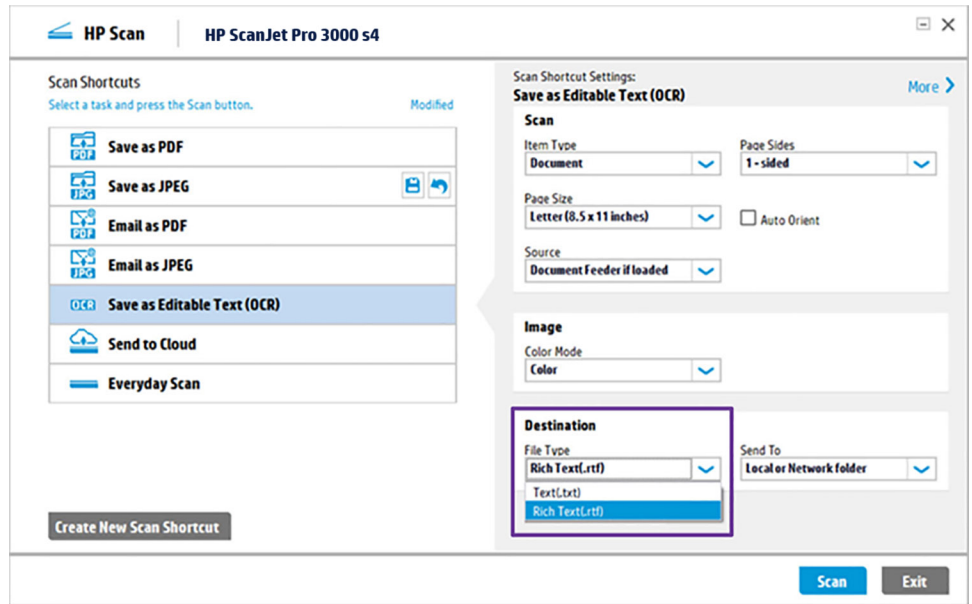
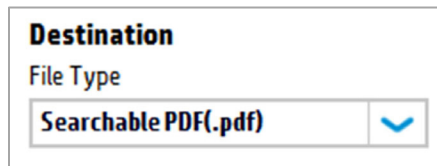
Send to Cloud lets you choose a destination such as Dropbox, Google Drive, SharePoint®, or OneDrive. HP Scan may display a sign-in screen. Once you are authenticated, you will simply see a local **Save as** destination window as shown below:



Turn scans into editable/searchable text (OCR)

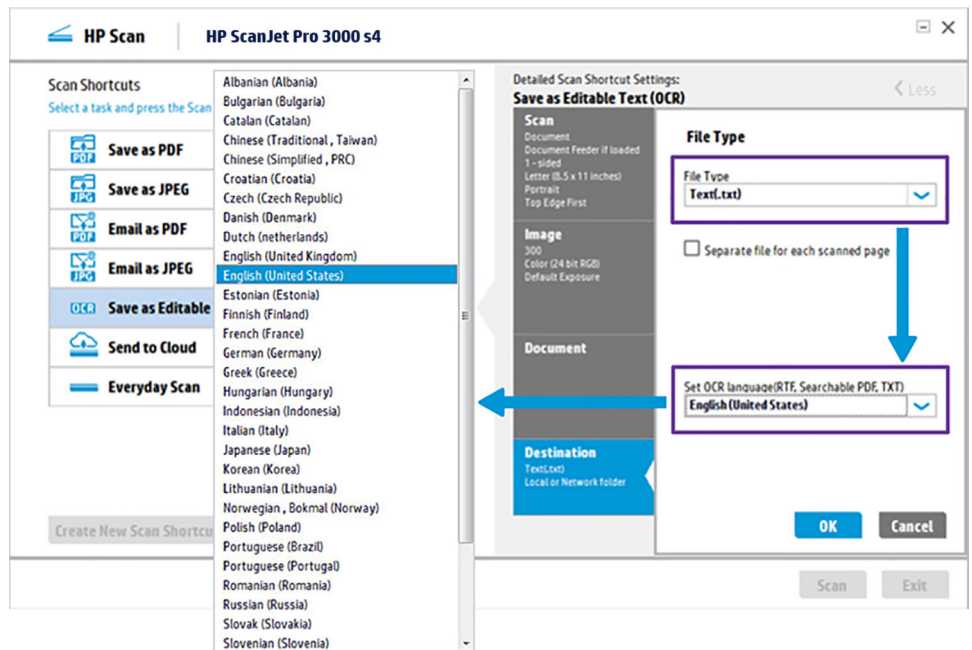
HP Scan's OCR technology allows you to convert scanned images to common file types with editable and searchable text. OCR capabilities also enhance the indexing and retrieval of documents.

- When you select **Save as Editable Text**, you can choose between **Rich Text (.rtf)** and plain **Text (.txt)** format.
- When you choose to scan as a PDF file, you have the option to select **Searchable PDF**, which also uses OCR and will preserve formatting of the original file; the text content is searchable in PDF readers, such as Adobe® Reader or Acrobat®.



Select the OCR language

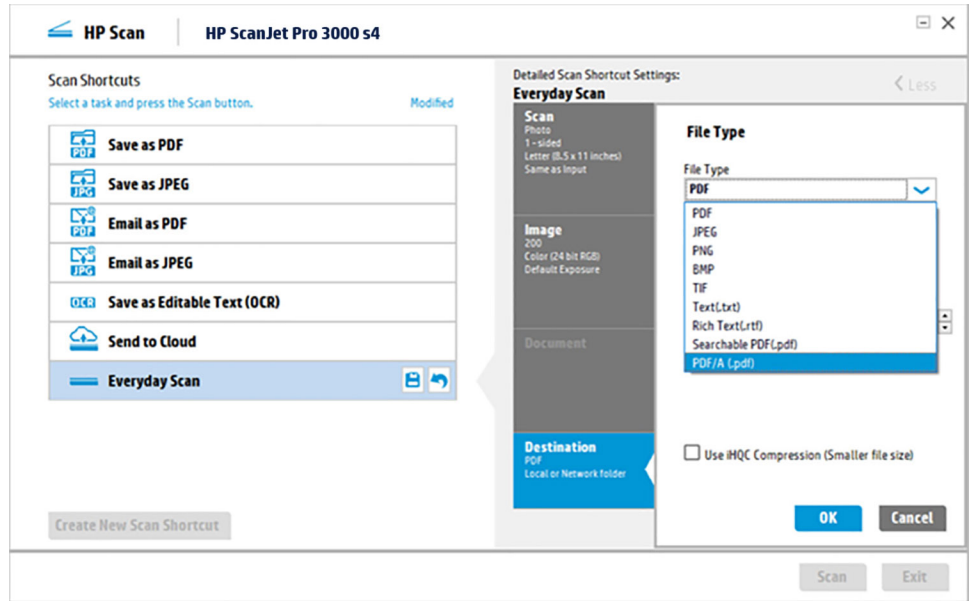
HP Scan's OCR software is able to recognize 36 different languages. To access the language drop-down list, click **More**, **File Type**, **Set OCR language(RTF, Searchable PDF, TXT)**.



HP Scan file formats

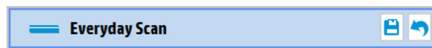
Whether you need image-only files or optical character recognition, HP Scan has you covered with multiple file type options:

- **PDF image (.pdf)** is an image file. You cannot search for text inside this file type.
- **Searchable PDF (.pdf)** contains searchable text. Document appearance is preserved.
- **PDF/A (.pdf)** meets ISO requirements for long-term archival of electronic documents.
- **Rich Text Format (.rtf)** can be edited by most word processing programs.
- **Text (.txt)** creates a plain text file that can be opened in any word processing program.
- **JPEG image (.jpg)** is a compression method commonly used for digital photos. The amount of compression can be specified.
- **TIFF (.tif)** is the Tagged Image File Format. You can also choose single or multi-page output.
- **Bitmap image (.bmp)** is a raster graphics image file format used to store bitmap digital images.
- **Portable Network Graphics (.png)** is a raster graphics file format that supports lossless data compression. It was designed for transferring images on the Internet.



About Everyday Scan

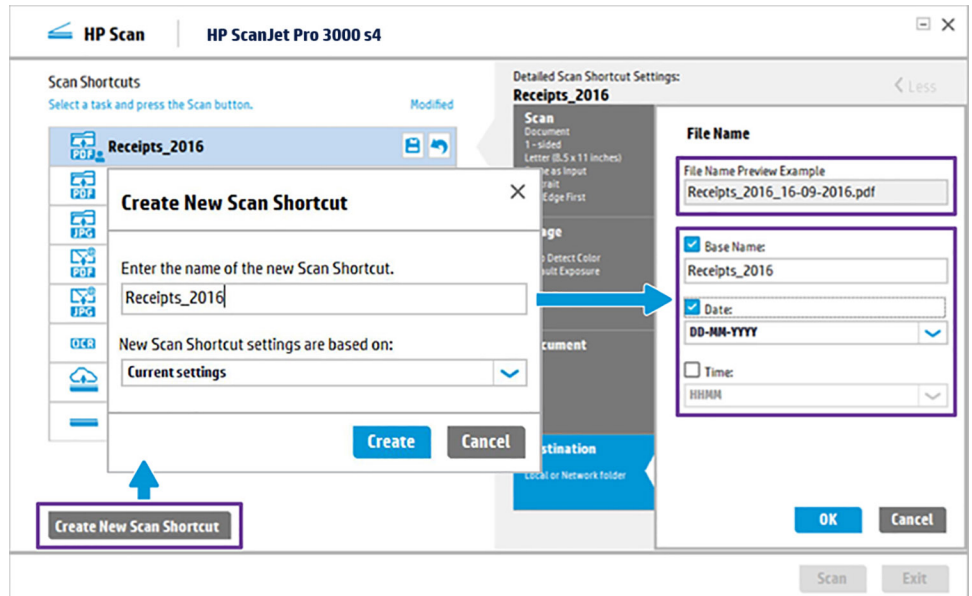
This predefined shortcut is intended for quick one-time tasks. All scan settings are available in this shortcut, giving you the flexibility to modify any settings needed. After using, you can quickly undo any changes or save them for the next session.



Save customized shortcuts

Quickly scan using your most-used settings—then save the settings as a new shortcut. Now you can consistently execute jobs at the touch of a button.

- Fast way to create new scan shortcut: specify desired settings and click the icon **Scan modifications to this scan**.
- Another method is to click **Create New Scan Shortcut** at any time.

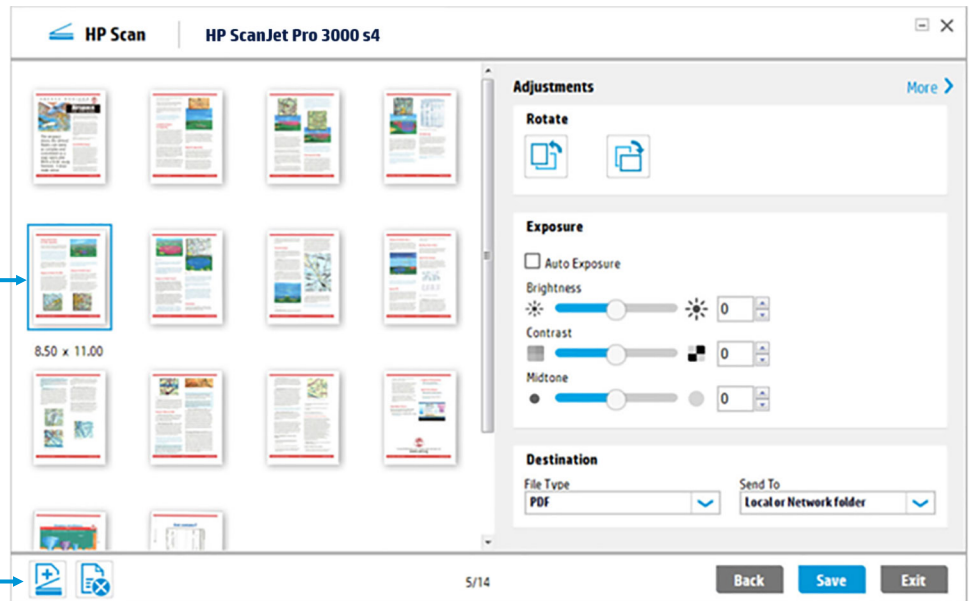


Preview your scans before saving

HP Scan lets you monitor the progress of your scans, and preview them before saving. You can easily make a variety of adjustments to get the results you want, including reordering, adding, or deleting pages, rotating 90 degrees left or right, changing exposure, file type, and destination. Select **More** for additional adjustments.

Double-click an image to zoom in

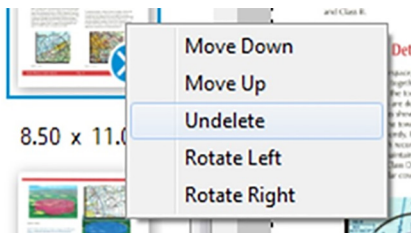
Add or delete pages



Delete unwanted pages

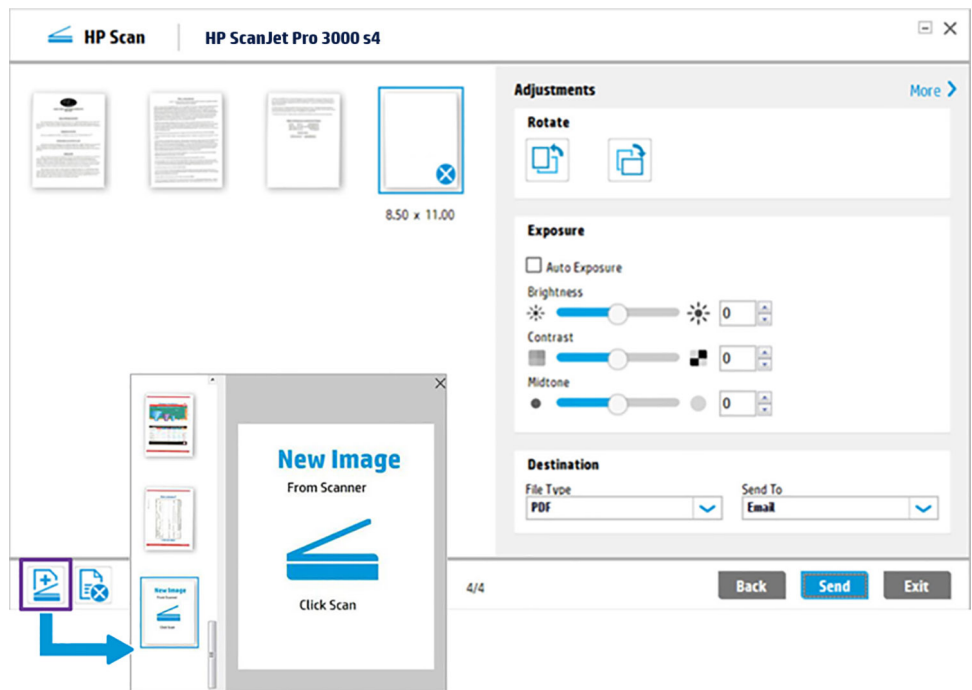
When you click the icon with the "x" to mark a page (or multiple pages) for deletion, HP Scan marks it with an X on the image preview window. Pages that were automatically marked for deletion will show up in the same manner.

If you change your mind, a simple right-click lets you choose **Undelete** before the scan is saved.

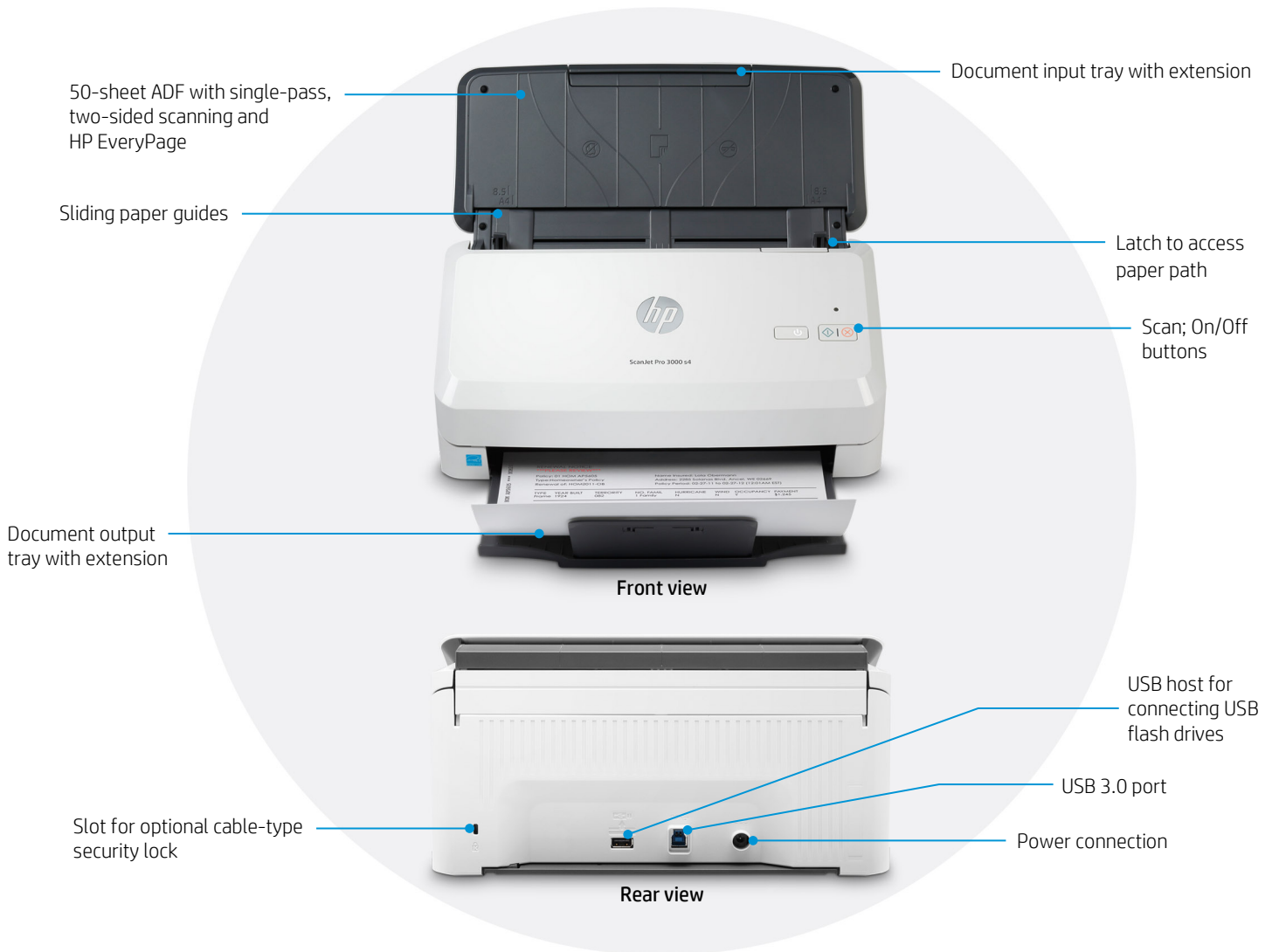


Add pages to the scan

When you click the plus (+) icon to add a page or multiple pages to the scan, you can again specify scan settings, such as 1- or 2-sided, color mode, etc. You can also drag and drop the new pages to wherever you want them in the sequence.



Get to know the HP ScanJet Pro 3000 s4



At a glance

Model (product number)	ScanJet Pro 3000 s4 (6FW07A)
Scan speeds (simplex/duplex)	Up to 40 pages per minute (ppm)/80 ipm ¹
ADF capacity	50-sheet ADF; scans media sizes up to 122 inches (309.9 cm)
Recommended daily duty cycle	Up to 4,000 pages
Connectivity	USB 3.0
Scan destinations	Scan to PC via USB, Scan to USB Drive
Software included	HP Scan (with built-in optical character recognition [OCR]), WIA, TWAIN, ISIS, I.R.I.S. Readiris Pro and Cardiris (Win only)
Media weight supported	10.7 to 56 lb (40 to 210 g/m ²)

What's new?



HP ScanJet Pro
3000 s4
(6FW07A)



HP ScanJet Pro
3000 s3
(L2753A)

Scan speeds up to 40 ppm/80 ipm ¹	Scan speeds up to 35 ppm/70 ipm ¹	Increased scan speeds
4,000-page daily duty cycle	3,500-page daily duty cycle	Increased duty cycle
Supports 10.7 to 56 lb (40 to 210 g/m ²) media weight	Supports 10.7 to 110 lb (40 to 413 g/m ²) media weight	Slightly reduced range of media weight capacities
Product dimensions (width x depth x height): 11.8 x 6.8 x 6.1 in (300 x 172 x 154 mm)	Product dimensions (width x depth x height): 10.7 x 7.79 x 7.48 in (310 x 198 x 190 mm)	More compact design—takes up less room on desktop
Scan to USB drive	Not available	Share and store files via flash drive

Technical specifications

HP ScanJet Pro 3000 s4

Product number	6FW07A
Scanner type and modes supported	Sheet-feed scanning with ADF, single-pass two-sided scanning, color, grayscale, or black-and-white
Scan technology	CMOS Contact Image Sensor (CIS)
Light source (scanning)	LED
Other advanced features	Auto-color detect, auto-crop, auto-exposure, auto orient, OCR, zonal OCR, zonal barcode, edge removal, background cleanup, remove hole, color drop out, straighten the page, scan to cloud, scan to email, PDF security, misfeed detection advance setting
Duty cycle (recommended)	4,000 pages per day
Control panel	Scan button, Power button with a LED and a LED for error indication
Scan speed at 300 dpi¹	Up to 40 ppm/80 ipm (black-and-white, grayscale, and color)
Scan resolution	Optical: up to 600 dpi; Output dpi settings: 75, 150, 200, 240, 300, 400, 500, 600, 1200 ppi
Bit depth and grayscale	24-bit external; 48-bit internal; 256 grayscale levels
Compatibility	TWAIN certified version 2.1, ISIS, WIA
File formats (text and images)	For text and images: PDF, PDF/A, encrypted PDF, JPEG, PNG, BMP, TIFF, Word, Excel, PowerPoint, Text (.txt), Rich Text (.rtf) and searchable PDF
Scan input modes	One default scan mode on front-panel for HP Scan in Win OS, HP Easy Scan/ICA in Mac OS and third-party applications via TWAIN, ISIS and WIA
Memory	256 MB
Processor	666 MHz
ADF media specifications	
Input capacity	Up to 50 sheets (80 g/m ²)
Custom sizes	2.0 x 2.9 in to 8.5 x 122 in (5.08 x 7.36 cm to 21.6 x 309.9 cm)
Standard sizes	Letter, legal, executive; A4, A5, A6, A7, A8, B5, B5 (JIS); long page support up to 122 in (309.9 cm)
Media weights	10.7 to 56 lb (40 to 210 g/m ²)
Media types	Cut sheet paper, printed paper (laser and ink), pre-punched paper, bank checks, business cards, freight bills, carbonless forms, plastic carrier sheets for easily damaged documents, previously stapled media with staple removed, plastic cards up to 0.05 in (1.24 mm)
Connectivity	USB 3.0
Scan destinations	Scan to PC via USB, Scan to USB drive
Compatible operating systems	Microsoft® Windows®: 10, 8.1, 7, XP: 32-bit and 64-bit, 2008 R2, 2012 R2, 2016, 2019 MacOS: Catalina 10.15, Mojave 10.14, High Sierra 10.13 Linux® and Citrix® ready
Minimum system requirements, Windows	Compatible Windows OS, 2 GB available hard disk space, CD-ROM/DVD drive or Internet connection, USB port, Microsoft Internet Explorer
Minimum system requirements, Mac	Compatible Mac OS, 1 GB HD, Internet required, USB
Dimensions (width x depth x height)	11.8 x 6.8 x 6.1 in (300 x 172 x 154 mm) ⁵
Weight	6.0 lb (2.7 kg)
What's in the box	HP ScanJet Pro 3000 s4 Sheet-feed scanner, installed roller kit (~100,000 pages), power cord, power adapter, USB cable, support flyers, install guide
Software included	HP Scan (with built-in optical character recognition [OCR]), WIA, TWAIN, ISIS, I.R.I.S. Readiris Pro and Cardiris (Win only)
Warranty	One-year bench limited warranty whole unit replacement, phone and Web support included. Warranty may vary by country as required by law. Go to hp.com/support to learn about HP world-class service and support options in your region.

Environmental specifications

HP ScanJet Pro 3000 s4

Environmental ranges

Temperatures Operating: 50 to 95° F (10 to 35° C); Recommended operating: 63.5 to 77° F (17.5 to 25° C); Storage: -40 to 140° F (-40 to 60° C)

Relative humidity range Operating range: 10 to 80% RH (non-condensing); Recommended operating range: 30 to 70% RH; Storage range: 0 to 90% RH (non-condensing)

Acoustic sound power emissions 6.1 B(A)

Power specifications⁶

Power supply External power adaptor; Input: 90 to 264 VAC (50/60 Hz)

Power consumption Ready: 4.4 watts, Sleep: 1.1 watts, Off/Auto-off: 0.1 watts

Energy-saving features HP Instant-on Technology,³ HP Auto-Off Technology⁴

Environmental specifications ENERGY STAR 3.0 certified, CECP, EPEAT² Silver, RoHS-compliant

Safety and regulatory compliance IEC 60950-1:2005 +A1:2009+A2:2013/EN60950-1:2006 +A11:2009 +A1:2010+A12:2011+A2:2013; IEC 62479:2010 / EN 62479:2010; IEC 62471:2006/ EN62471:2008; GB4943-2011

Electromagnetic emission standard CISPR 22:2008 & CISPR 32: 2012/ EN 55032:2012 - Class B, EN 61000-3-2: 2014, EN 61000-3-3: 2013, EN 55024: 2010, FCC Title 47 CFR, Part 15 Class B / ICES-003, Issue 6, GB9254-2008, GB17625.1-2012, EN 300 328 V2.1.1

Ordering information

Use accessories and supplies specifically designed for the scanner to help provide efficient performance. To order the accessories and supplies listed here, go to hp.com. To contact HP by country, please visit hp.com/go/contact. If you don't have access to the Internet, contact your qualified HP dealer, or call HP (U.S.) at (800) 474-6836.

Scanner	HP ScanJet Pro 3000 s4 Sheet-feed Scanner	6FW07A
Long life consumables	HP ScanJet Pro 2000 s2/3000 s4/N4000 snw1 roller replacement kit (~100,000 pages)	7QH79A
Accessories	Carrier sheet kit 10-pack cleaning cloth kit	8PA50A C9943B
HP Care Pack Services⁷	HP 3 year Standard Exchange ScanJet Pro 3xxx Service HP 3 year Next Business Day Exchange ScanJet Pro 3xxx Service HP 3 year Next Business Day Onsite Exchange ScanJet Pro 3xxx Service HP 3 year Return to Depot ScanJet Pro 3xxx Service HP 1 year Post Warranty Standard Exchange ScanJet Pro 3xxx Service HP 1 year Post Warranty Next Business Day Exchange ScanJet Pro 3xxx Service HP 1 year Post Warranty Next Business Day Onsite Exchange ScanJet Pro 3xxx Service HP 1 year Post Warranty Return ScanJet Pro 3xxx Service HP Installation Service wireless/network Personal Scanner & Printer	U9JR0E U9JR1E U9JR2E U9JR3E U9JR4PE U9JR5PE U9JR6PE U9JR7PE U9JT1E

¹ Scan speed measured at 300 dpi (black-and-white, grayscale, and color). Actual processing speeds may vary depending on scan resolution, network conditions, computer performance, and application software.

² EPEAT registered where applicable. EPEAT registration varies by country. See epeat.net for registration status by country.

³ The HP ScanJet Pro 3000 s4 uses an LED light source with no warm-up time required, helping you conserve energy compared with products that use cold cathode fluorescent lamp (CCFL) copying.

⁴ HP Auto-Off technology capabilities are subject to device and settings.

⁵ With input and output trays folded and covers closed.

⁶ Power requirements are based on the country/region where the scanner is sold. Do not convert operating voltages. This will damage the device and void the product warranty. Power consumption value typically based on measurement of 115V device.

⁷ To view entire list of HP Care Pack Services, visit hp.com/go/cpc.

Sign up for updates
hp.com/go/getupdated



Share with colleagues

© Copyright 2020 HP Development Company, L.P. The information contained herein is subject to change without notice. The only warranties for HP products and services are set forth in the express warranty statements accompanying such products and services. Nothing herein should be construed as constituting an additional warranty. HP shall not be liable for technical or editorial errors or omissions contained herein.

Acrobat and Adobe are trademarks of Adobe Systems Incorporated. Google Drive is a trademark of Google Inc. Citrix is a registered trademark of Citrix Systems, Inc. and/or one or more of its subsidiaries, and may be registered in the United States Patent and Trademark Office and in other countries. ENERGY STAR is a registered trademark owned by the U.S. Environmental Protection Agency. Linux is the registered trademark of Linus Torvalds in the U.S. and other countries. Microsoft, SharePoint, and Windows are U.S. registered trademarks of the Microsoft group of companies.

