

# 10” Digital Photo Frame

Instructional Manual

---



## Table of Contents

---

Frame Features .....	04
Frame Control Close-up .....	06
Remote Control Close-up .....	07
Package Contents .....	08
Getting Started .....	08
<b>Operations</b>	
Main Menu .....	09
Transferring Files from your PC/Mac to the Frame's Internal Memory .....	10
Managing Files in the Digital Frame's Internal Memory .....	11
<b>Photo Function</b>	
Setup a Photo Slideshow .....	12
Photo Set-up .....	12
<b>Video Function</b>	
Playing Videos .....	13
Video Set-up .....	14
<b>Music Function</b>	
Playing Music .....	15
Music Set-up .....	16

## Table of Contents

---

### **Calendar Function**

Calendar Set-up .....	17
-----------------------	----

### **Auto On / Off Function**

Auto On / Off Setup .....	18
---------------------------	----

### **Alarm Function**

Alarm Setup .....	19
-------------------	----

### **Startup Function**

Startup Mode .....	20
--------------------	----

Technical Support .....	21
-------------------------	----

Radio and TV Interference Statement .....	22
---	----

Warranty .....	23
----------------	----

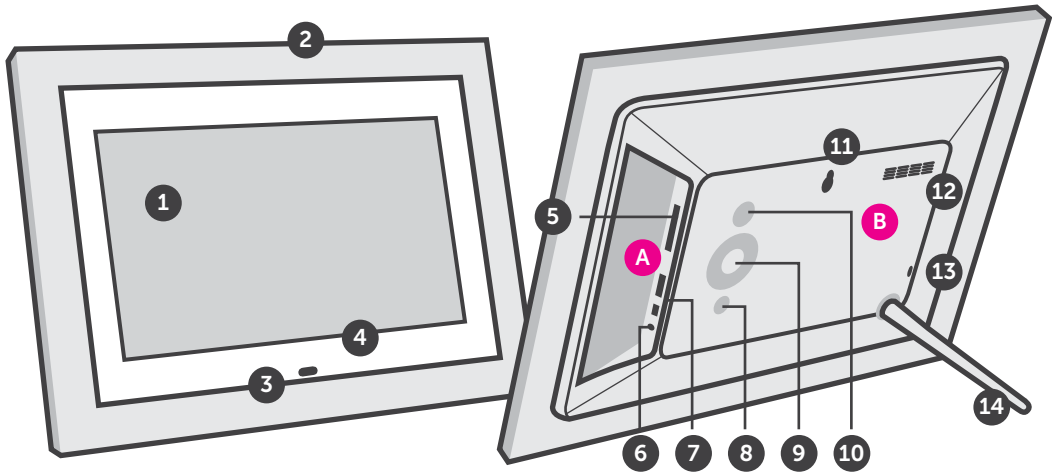
## Frame Features

---

- |   |                       |    |                    |    |                 |
|---|-----------------------|----|--------------------|----|-----------------|
| 1 | 10" LCD Screen        | 6  | Power Adapter Port | 11 | Wall Mount Hole |
| 2 | Black Frame           | 7  | USB 2.0 Ports      | 12 | Speakers        |
| 3 | Remote Control Sensor | 8  | Menu Button        | 13 | Security Lock   |
| 4 | White Matte           | 9  | Directional Keypad | 14 | Frame Stand     |
| 5 | SD/SDHC Card Slot     | 10 | Power Button       |    |                 |

**A** Connect a USB hard drive, USB flash drive or SD/SDHC card to easily access and share your favorite pictures, music, or videos.

**B** Transfer and store files quickly and easily from your personal computer to the frame's 4GB built-in memory with hi-speed USB 2.0.



## Frame Control Close-Up

1 - ⏻ Power On / Off

2 - MENU

(a) Press to return to previous screen

(b) Press & hold to return to Main Menu

3 - ▶ || Play / Pause

(a) Press to select option on Main Menu

(b) Press to pause slideshow, music or video

4 - | ◀◀ Up Arrow

(a) Press to navigate UP when selecting options

(b) Press to select Previous file (Photo & Music mode)

(c) Press & hold to Fast Forward

5 - ▶▶ | Down Arrow

(a) Press to navigate DOWN when selecting options

(b) Press to select Next file (Photo & Music mode)

(c) Press & hold to Scan Backward

6 - ((◀) Left Arrow

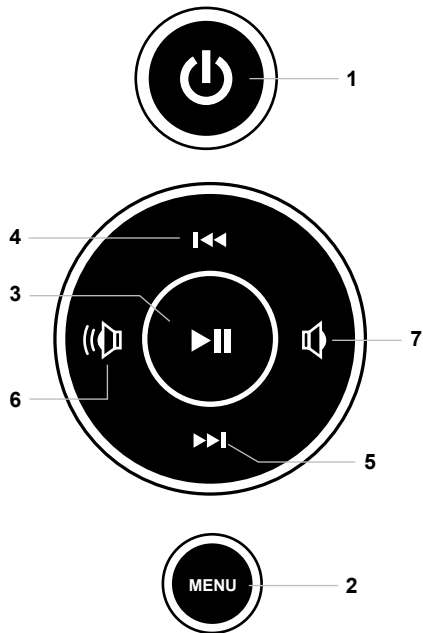
(a) Press to navigate LEFT when selecting options

(b) Press & hold to lower volume

7 - (▶) Right Arrow

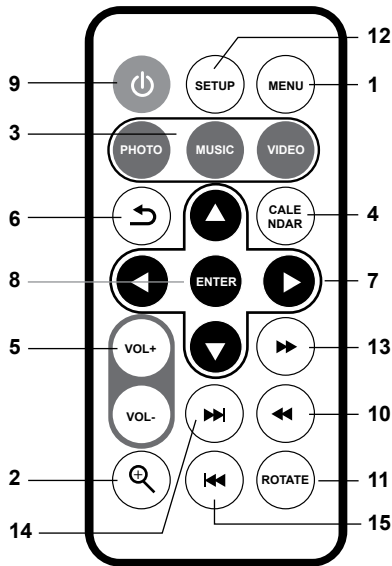
(a) Press to navigate RIGHT when selection options

(b) Press & hold to increase volume



## Remote Control Close-Up

1. **Menu** - Takes you to the main menu
2. **Zoom In**
3. **Mode** - Select between photo, music and video modes
4. **Calendar**
5. **Volume + / Volume -**
6. **Exit** - Returns to the previous menu
7. **Up, Down, Left, Right Arrows** - Use arrow keys to navigate your way through various menus
8. **Enter**
9. **Power**
10. **Rewind**
11. **Rotate**
12. **Setup**
13. **Fast Forward**
14. **Advance to Next**
15. **Advance to Previous**



## Package Contents

---

Your order has been carefully packaged and inspected. The following should be included in your package. Please inspect the contents of the package to ensure that you have received all items and that nothing has been damaged. If you discover a problem, please contact us immediately for assistance.

- 10" Digital Photo Frame
- Remote Control
- USB 2.0 Cable (Type A to mini-B)
- Power Adapter
- Frame Stand
- Registration Card

## Getting Started

---

- Remove the plastic insulator from the battery on the remote control
- Screw in the frame stand
- Plug in the power adapter



## Operating Instructions

---

### Main Menu

- Press the power button on the back of the frame to power on the frame.
- The On-screen Display (OSD) will show the Main Menu. Each icon represents the various functions available on the device: **Photo, Video, Music, Calendar, File** and **Settings**.
- Browse the different functions using the ◀ or ▶ arrow buttons and select a function by pressing the **Enter** button.
- Press the ▲ or ▼ arrow to browse the various storage options, use the ◀ or ▶ arrow buttons to select the storage media and select the functions such as photo or video by pressing the **Enter** button.

## Operating Instructions

---

### Transferring Files from your PC/Mac to the Frame's Internal Memory

- A USB cable is included with your digital frame to connect it to your PC/ MAC. Connect the small connector to your digital frame and the larger connector to your PC / MAC.
- Once connected, the frame will display **Connected to Computer**. On a PC, the frame's internal memory will appear as a removable drive when viewed in **My Computer**. On a Mac, the frame will appear as a drive icon on the desktop.
- Copy your photo, video and music files from your PC / MAC into the icon representing the frame's internal memory. When finished disconnect the USB cable from the PC or MAC. (Note: For a Mac, eject the drive icon before disconnecting the USB cable.)
- The frame will return to normal operation once it is disconnected from your PC / MAC.

## Operating Instructions

---

### Managing Files in the Digital Frame's Internal Memory

1. Select either the memory card or the USB device from the main menu.
2. Select **File** and press **Enter**.
3. A list of the files or folders contained on the storage source will be displayed. Browse the files using the arrow buttons. To select a file, press the ► button to select.
4. Select **Copy to Internal** to copy.

To delete a file, repeat steps 1-3 and select **Delete** to remove the selected file.

## Photo Function

---

### Setup a Photo Slideshow

- Select the source of the photos you wish to present in the slideshow by selecting **NAND** (Internal Memory), **SD** or **USB** storage options and pressing the **Enter** button.
- Navigate to the **Photo** function using the ◀ or ▶ arrow buttons and press the **Enter** button to start the slideshow.
- During slideshow, press **Setup** button and select **Photo Setup**. This will provide you with the various options to customize your slideshow. Browse the options using the ▲ or ▼ arrow buttons and **Enter** button to confirm.

### Photo Setup

- In Slideshow mode, you can enter the **Photo** menu by pressing the **Setup** button to set the slide, duration, background music, display rate and slide effect.
- To exit, press the **Menu** button.

## Video Function

---

### Playing Videos

- Select the source of the videos you wish to play by selecting **NAND** (Internal Memory), **SD** or **USB** storage options and pressing the **Enter** button.
- Navigate to the **Video** function using the ◀ or ▶ arrow buttons and press the **Enter** button.
- Select the video that you wish to view and press the **Enter** button.
- Adjust the volume of the video playing using the **VOL+** or **VOL-** buttons.
- To exit, press the **Menu** button.

## Video Function

---

### Video Setup

- To customize how videos are played back, press the **Setup** button while a video is playing. You may also access the **Video** menu by selecting **Settings** in the Main Menu. Browse options **Display Mode** and **Play Mode** using the ▲ or ▼ arrow buttons, **Play** and ◀ or ▶ to make the selection.
- To exit, press the **Menu** button.

## Music Function

---

### Playing Music

- Select the source of the music files you wish to play by selecting **Memory** (Internal Memory), **SD** or **USB** storage options and pressing the **Enter** button.
- Navigate to the **Music** function using the ◀ or ▶ arrow buttons and press the **Enter** button.
- Select the song using ▲ or ▼ arrow buttons that you wish to play and press the **Enter** button.
- Adjust the volume of the song playing using the **Vol+** or **Vol-** buttons.
- To exit, press the **Menu** button.

## Music Function

---

### Music Setup

- To customize how music played back, press the **Setup** button while the music is playing. You may select / change the Play Mode or **Show Spectrum** by using the arrow buttons.
- To exit, press the **Menu** button.



## Calendar Function

---

### Calendar Setup

- To configure custom settings for the Calendar, select the **Settings** function in the Main Menu and press the **Enter** button. Navigate to **Calendar Setup** using the ▲ or ▼ arrow buttons and press the **Enter** button.
- Use the arrow buttons to set the correct date, time and 12/24 mode.
- To exit, press the **Menu** button.

## Auto On / Off Function

---

### Auto On / Off Setup

- To configure Auto On / Off feature, select the **Settings** function in the Main Menu and press the **Enter** button. Then navigate to **System Setup** using the ▲ or ▼ arrow buttons and press the **Enter** button.
- Select **Power On** and press ► to change between ON / OFF.
- Select **Auto Boot Time** and set the power on time.
- Select **Power Off** and press ► to change between ON / OFF.
- Select **Auto Shut Time** and set the power off time.
- To exit, press the **Menu** button.

## Alarm Function

---

### Alarm Setup

- To set the Alarm, select the **Settings** function in the Main Menu and press the **Enter** button. Navigate to **Calendar** using the ▲ or ▼ arrow buttons and press the **Enter** button.
- Use the ▲ and ▼ to navigate to alarm ON / OFF, time of the alarm and the day for the alarm and use ◀ and ▶ to change the settings.
- To exit, press the **Menu** button.

## Startup Function

---

### Startup Mode

- To set the Startup Mode, select the **Settings** function in the Main Menu and press the **Enter** button. Navigate to **System Setup** using the ▲ or ▼ arrow buttons and press the **Enter** button.
- Use the ▲ and ▼ to navigate to Startup Mode and select the power on mode to the desired function such as photo, video etc. and use ◀ and ▶ to change the settings.
- To exit, press the **Menu** button.

## Technical Support

---

We are committed to providing the best customer service support. If you need assistance with your Aluratek product, please contact the Aluratek Technical Support department prior to returning this device. Reach out to us in any of the following ways:

E-mail: **support@aluratek.com**

Web: **aluratek.com/helpdesk**

Local (Irvine, CA): **714-586-8730**

Toll free: **1-866-580-1978**

## Radio and TV Interference Statement

---

**WARNING!!!** This equipment has been tested and found to comply with the limits of a Class B digital device, pursuant to part 15 of the FCC rules. These limits are designed to provide reasonable protection against harmful interference in a residential installation

This equipment generates, uses and can radiate radio frequency energy and, if not installed and used in accordance with the instruction, may cause harmful interference to radio communications. However, there is no guarantee that interference will not occur in a particular installation. If this equipment does cause harmful interference to radio or television reception, which can be determined by turning the equipment off and on, the user is encouraged to try to correct the interference by whatever measures may be required to correct the interference.

## Warranty

---

Aluratek warrants this product against defect in material or workmanship for **1 Year** from the date of purchase.

This warranty becomes invalid if the factory-supplied serial number or “warranty void” sticker has been removed or altered on the product.

This warranty does not cover:

- A) Cosmetic damage or damage due to acts of God
- B) Accident, misuse, abuse, negligence or modification of any part of the product.
- C) Damage due to improper operation or maintenance, connection to improper equipment, or attempted repair by anyone other than Aluratek.
- D) Products sold AS IS or WITH FAULTS.

IN NO EVENT SHALL ALURATEK'S LIABILITY EXCEED THE PRICE PAID FOR THE PRODUCT FROM DIRECT, INDIRECT, SPECIAL, INCIDENTAL, OR CONSEQUENTIAL DAMAGES RESULTING FROM THE USE OF THE PRODUCT, IT'S ACCOMPANYING SOFTWARE, OR IT'S DOCUMENTATION.

Aluratek makes no warranty or representation, expressed, implied, or statutory, with respect to it's products, contents or use of this documentation and all accompanying software, and specifically disclaims it's quality, performance, merchantability, or fitness for any particular purpose. Aluratek reserves the right to revise or update it's product, software or documentation without obligation to notify any individual or entity.

