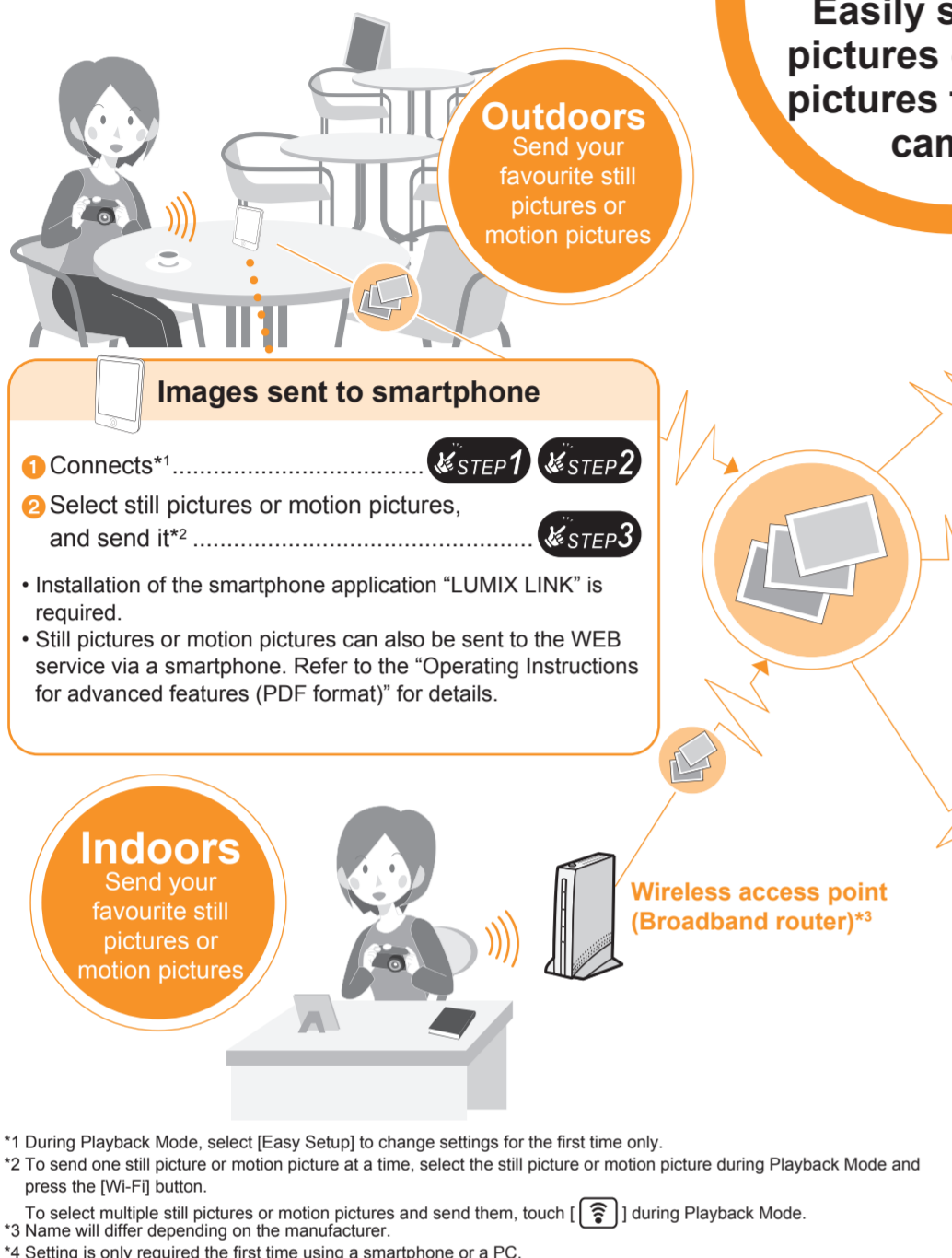


Easy connection setup guide



The camera cannot be used to connect to a public wireless LAN connection.

Easily send still pictures or motion pictures from your camera

Images sent to WEB service

- Connects*1
- Register to "LUMIX CLUB"*1
- Select still pictures or motion pictures, and send it*2

*1 - WEB service user registration*4

See the back page

Images sent to AV device

Send images to Panasonic AV device in your home.

- Connects*1
- Select still pictures or motion pictures, and send it*2

See the back page

Images sent to PC

- Connects*1
- Select still pictures or motion pictures, and send it*2

*1 The "PHOTOfunSTUDIO 6.4 HD Lite Edition with Wi-Fi" software on the CD-ROM (supplied) must be installed.

See the back page

*1 During Playback Mode, select [Easy Setup] to change settings for the first time only.
*2 To send one still picture or motion picture at a time, select the still picture or motion picture during Playback Mode and press the [Wi-Fi] button.
*3 To select multiple still pictures or motion pictures and send them, touch [Wi-Fi] during Playback Mode.
*4 Name will differ depending on the manufacturer.
*5 Setting is only required the first time using a smartphone or a PC.

Send still pictures or motion pictures from your camera to your smartphone

Preparation Download and install the smartphone application "LUMIX LINK"

About the "LUMIX LINK"

"LUMIX LINK" is a smartphone application provided by Panasonic to receive still pictures or motion pictures sent from LUMIX models with Wi-Fi, or to stream live to WEB services. "LUMIX LINK" is required to connect this camera and your smartphone. Download "LUMIX LINK" (available free of charge) using the method below.

For Android:

Smartphone operations

- Connect your Android device to the network.
- Select "Android Market".
- Enter "LUMIX LINK" into the search box.
- Select "LUMIX LINK" and install it.

The [LUMIX LINK] icon will be added to the menu.



For iPhone:

Smartphone operations

- Connect the iPhone to the network.
- Select "App Store".
- Enter "LUMIX LINK" into the search box.
- Select "LUMIX LINK" and install it.

The [LUMIX LINK] icon will be added to the menu.



Compatible OSes (current as of August 2011)
For Android: Android2.1, Android2.2, Android2.3
For iPhone: iOS3, iOS4
The service may not be able to be used properly depending on the type of smartphone being used. For compatible devices, see the following support site.
<http://panasonic.jp/support/global/cs/dsc/>
(This Site is English only.)
If you are downloading or transferring still pictures and motion pictures using your mobile network, you may be subject to high network usage fees under your contract.

STEP 1 Setup

Select [Easy Setup] on the camera

Setting is only required the first time.

Camera operations

1 Turn the camera on and touch [] to set Playback Mode.

2 Touch [MENU] to display the menu screen.

3 Touch [Wi-Fi Setup] ([Wi-Fi Setup]).

4 Touch [Easy Setup].

5 Touch [Smartphone].

6 Touch [Next].

The SSID and encryption key of the camera are displayed. Enter the displayed details in the next screen.

STEP 2 Connection

Connect your smartphone and camera

Smartphone operations

1 Set the Wi-Fi function to ON in the settings menu of the smartphone.

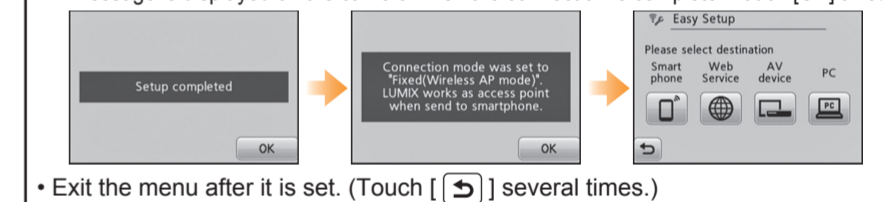
For further details, see the instructions of your smartphone.

2 Select the camera ([FX90-XXXXXX]) from the displayed network name (SSID) in the Wi-Fi settings.

3 Input the encryption key displayed on the camera.

Camera operations

- If entering the encryption key takes longer than approximately 4 minutes, the camera will return to the screen in STEP 1 Step 5.
- A message is displayed on the camera when the connection is complete. Touch [OK] twice.



4 Start the smartphone application "LUMIX LINK".

STEP 3 Send

Send still pictures or motion pictures from your camera to your smartphone

Select still picture or motion picture and send one at a time

Camera operations

1 In Playback Mode, drag the screen horizontally and select an image.

- Go to next image: Drag from right to left
- Go to previous image: Drag from left to right

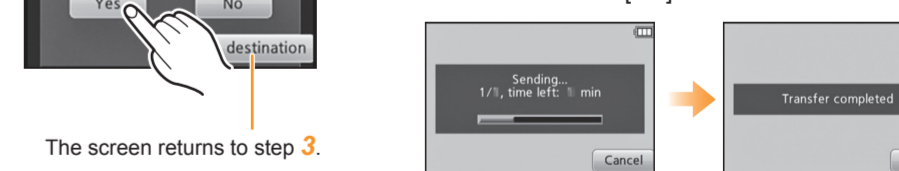
2 Press the [Wi-Fi] button.

3 Touch [Smartphone].

A list of smartphones that can be connected will appear. (This may take several minutes) Touch the destination name and touch [OK].

4 Touch [Yes].

A message will appear when the image has been sent. Touch [OK].



- If the screen is not displayed during the sending, reconnect your smartphone. Go to STEP 1.
- If still pictures or motion pictures cannot be sent, check "Message Display" and "Troubleshooting" on pages 29 to 32 of the "Basic Operating Instructions".

Sending multiple still pictures or motion pictures

Touch [Wi-Fi].

Refer to STEP 5 on the back page for details.



